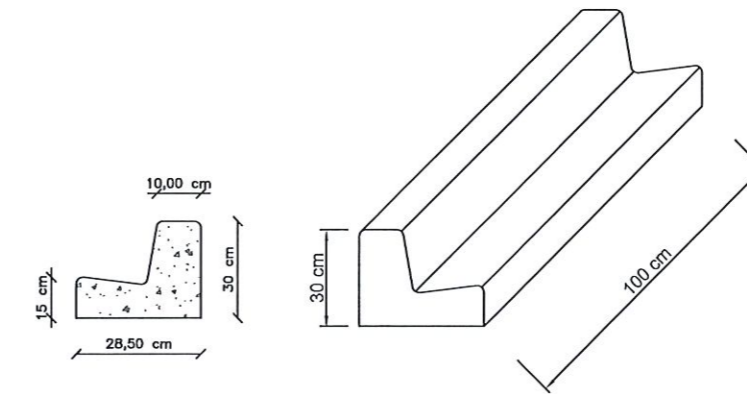
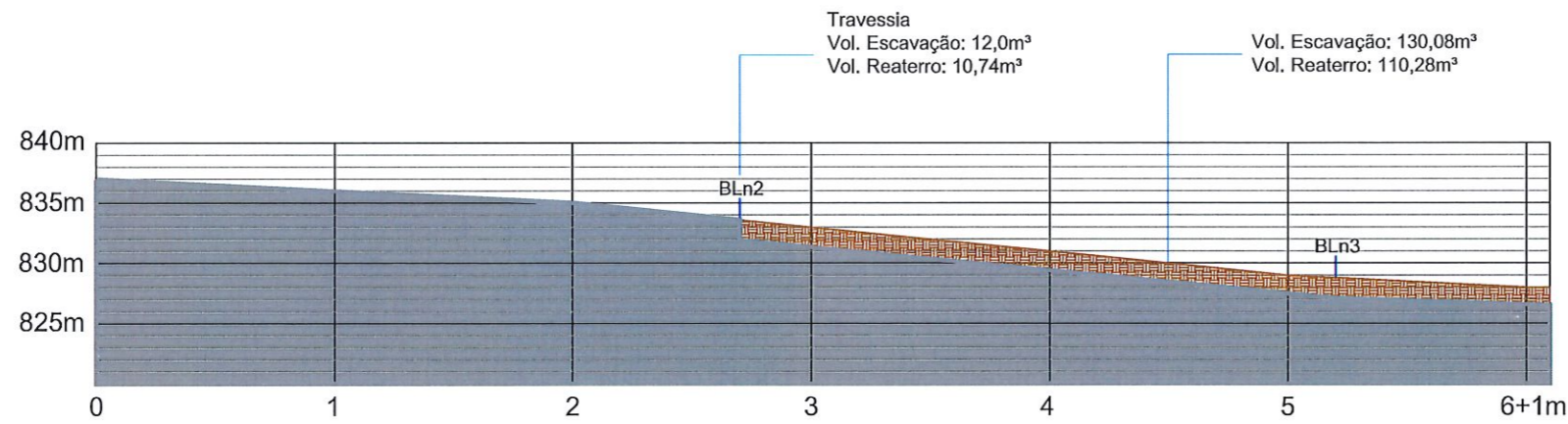


DRENAGEM E MEIO FIO - RUA AFONSO PENA
Esc. 1/500



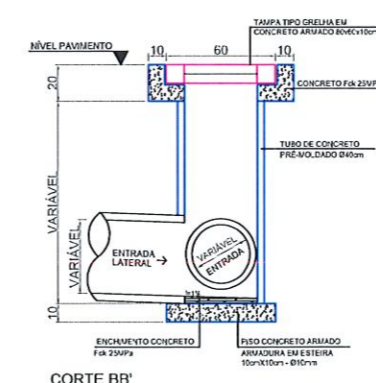
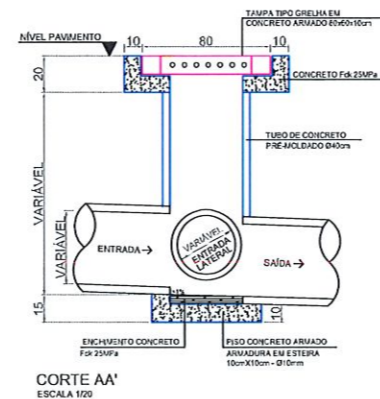
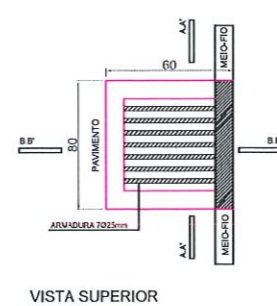
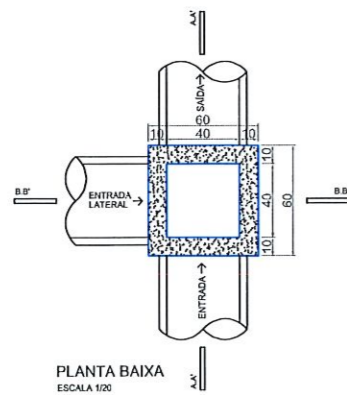
DETALHE MEIO FIO SEM ESCALA

LEGENDA	
	Boca de Lobo Existente (BLe)
	Boca de Lobo a Substituir (BLs)
	Boca de Lobo a Executar (BLn)
	Tubulação de Drenagem
	Meio Fio a Substituir



PERFIL LONGITUDINAL - RUA AFONSO PENA
Esc. 1/300

BOCA DE LOBO



MUNICÍPIO DE PATO BRANCO
Secretaria de Engenharia e Obras
Rua Caramuru, 271 - Centro
Fone (46) 3223-2509
engenharia@patobranco.pr.gov.br

PROJETO DE PAVIMENTAÇÃO ASFÁLTICA EM CBUQ
MUNICÍPIO DE PATO BRANCO
01/01

PROJETO DE DRENAGEM
RUA AFONSO PENA

Anderson Rossato *Anderson Bonetto*
ENGENHEIRO CIVIL
CREA/PR 121.922/0