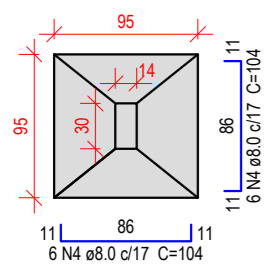


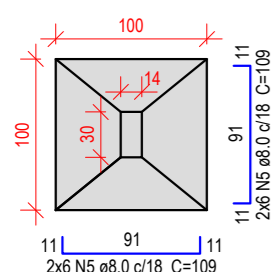
S6=S7=S8=S9=S10=S11=S12=S13=S16=S17=S18
=S23=S24=S25=S26=S30

PLANTA
Esc 1:50



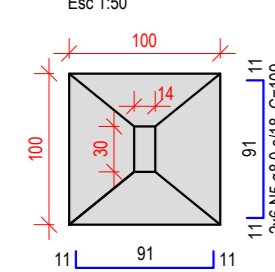
S3=S28

PLANTA
Esc 1:50



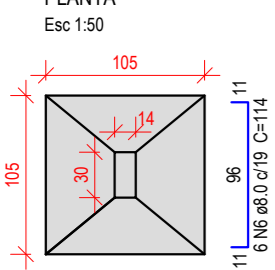
S4=S5

PLANTA
Esc 1:50



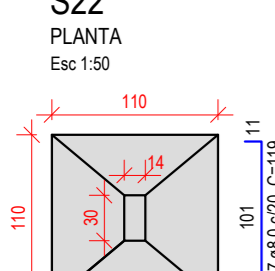
S21

PLANTA
Esc 1:50



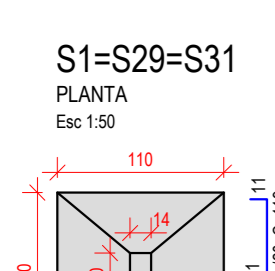
S22

PLANTA
Esc 1:50



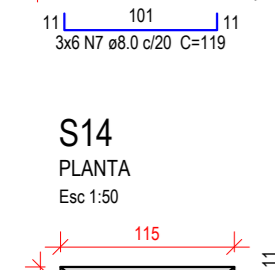
S1=S29=S31

PLANTA
Esc 1:50

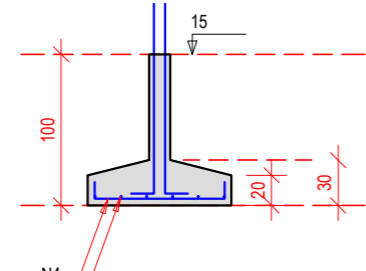


S14

PLANTA
Esc 1:50

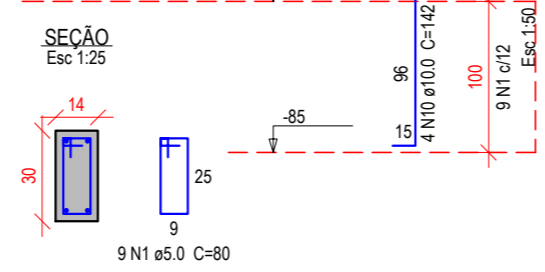


CORTE
Esc 1:50



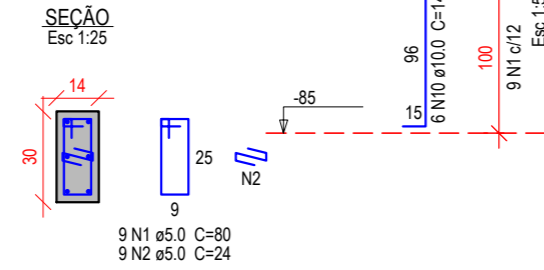
P6=P7=P8=P9=P10=
=P11=P12=P13=
=P16=P17=P18=
=P23=P24=P25=
=P26=P30

TÉRREO - L1



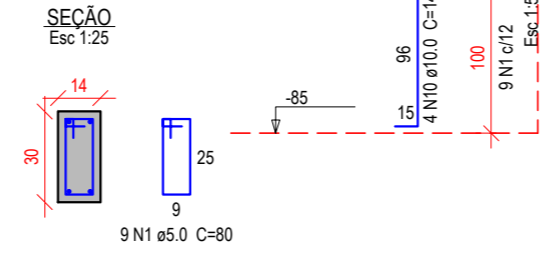
P28

TÉRREO - L1



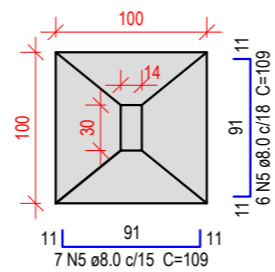
P3

TÉRREO - L1

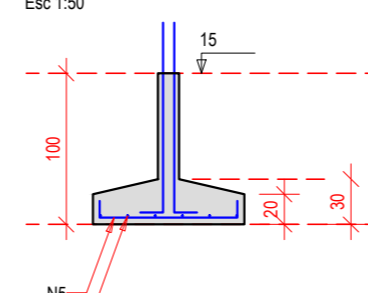


S2

PLANTA
Esc 1:50

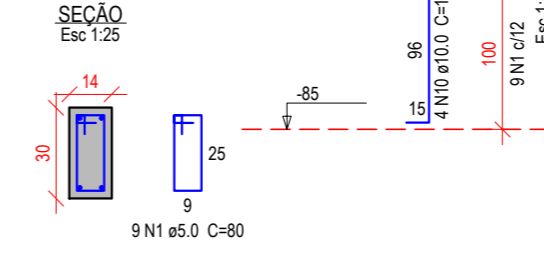


CORTE
Esc 1:50



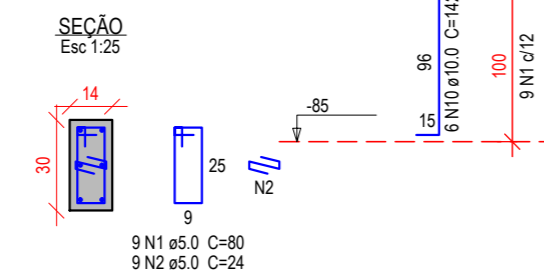
P2

TÉRREO - L1



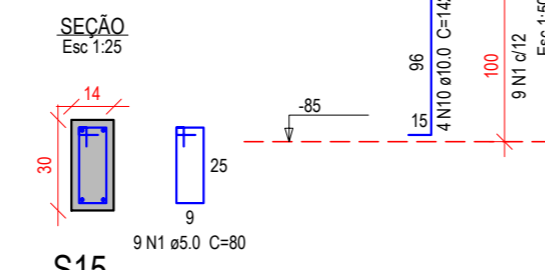
P4

TÉRREO - L1



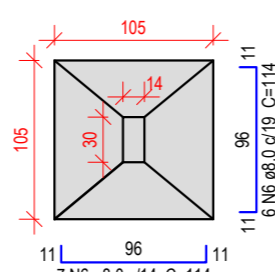
P5

TÉRREO - L1

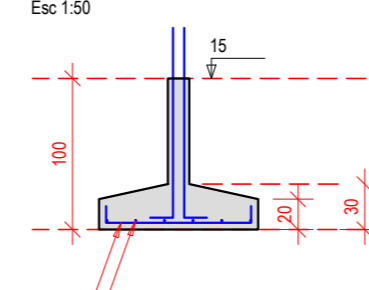


S15

PLANTA
Esc 1:50

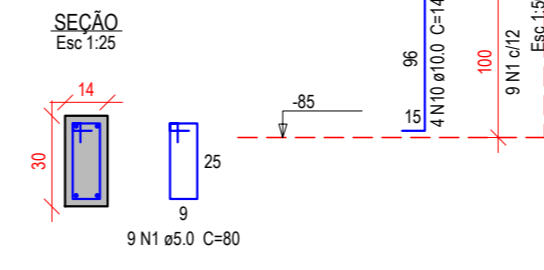


CORTE
Esc 1:50



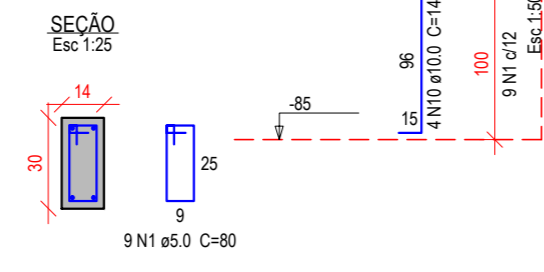
P15

TÉRREO - L1



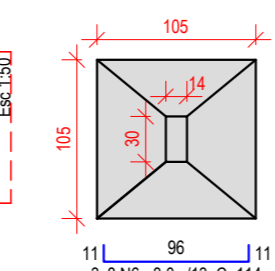
P21

TÉRREO - L1

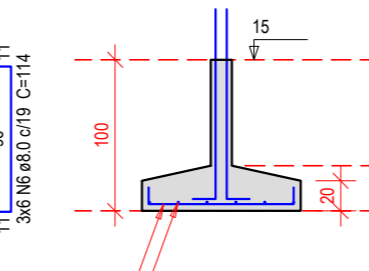


S27=S32=S33

PLANTA
Esc 1:50

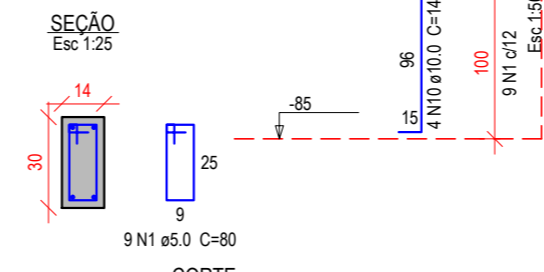


CORTE
Esc 1:50



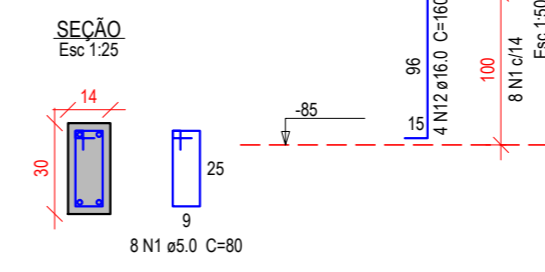
P27

TÉRREO - L1



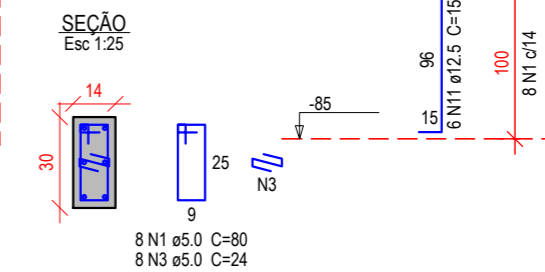
P32

TÉRREO - L1



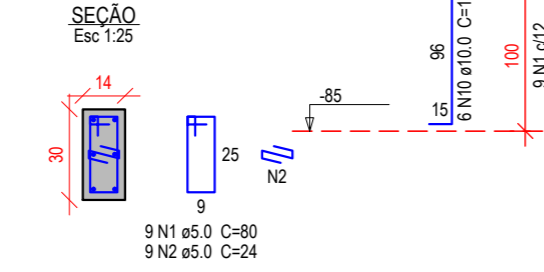
P33

TÉRREO - L1



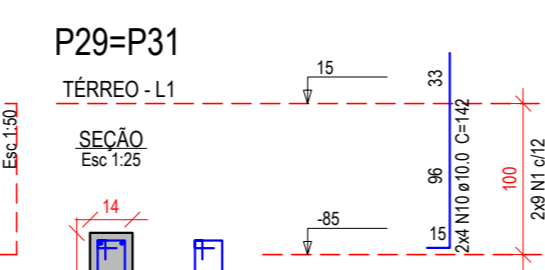
P22

TÉRREO - L1



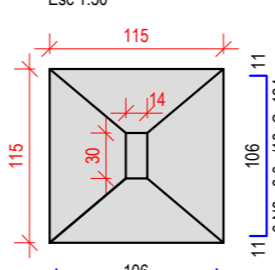
P29=P31

TÉRREO - L1

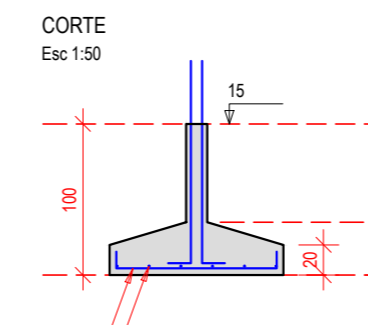


S20

PLANTA
Esc 1:50

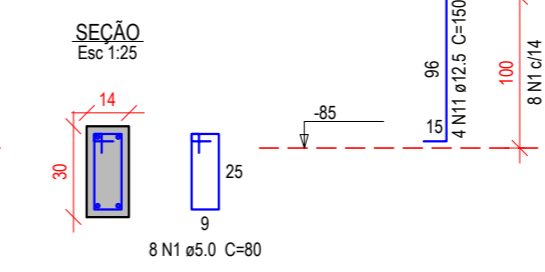


CORTE
Esc 1:50



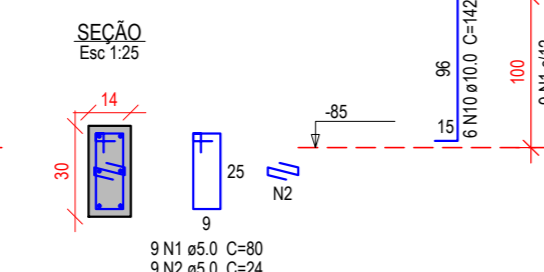
P20

TÉRREO - L1



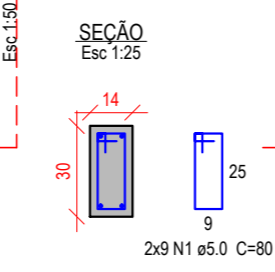
P1

TÉRREO - L1

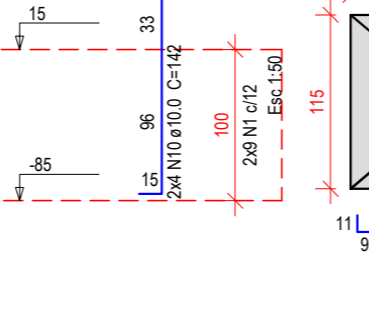


S19

PLANTA
Esc 1:50

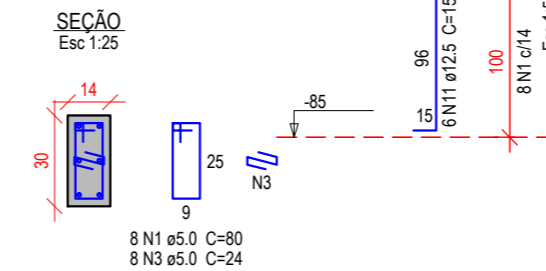


CORTE
Esc 1:50



P19

TÉRREO - L1



NOTAS:

- Fck = 30 Mpa, com slump 12+-2cm
- Classe de Agressividade Ambiental (CAA) II
- Aço CA-50, CA-60
- Cotas em centímetros
- As barras devem ser dobradas segundo os raios mínimos de curvatura da NBR-6118
- Vigas, pilares e lajes deverão seguir o cobrimento especificado com o auxílio de espaçadores plásticos ou metálicos
- O escoramento dos elementos em concreto armado é de responsabilidade do executor
- Utilizar vibrador para adensamento do concreto em todo elemento estrutural
- Atenção para contra-flechas, caso especificado em projeto
- Todos os elementos em contato direto com o solo devem ser devidamente impermeabilizados
- Aberturas em paredes, como portas e janelas devem conter verga e contraverga
- NORMAS TÉCNICAS DE REFERÊNCIA (PARA O PROJETO E EXECUÇÃO)
 - NBR 6118 - PROJETO DE ESTRUTURA DE CONCRETO - PROCEDIMENTO
 - NBR 6120 - CARGAS PARA O CÁLCULO DE ESTRUTURAS DE EDIFICAÇÕES
 - NBR 6122 - PROJETO E EXECUÇÃO DE FUNDAÇÕES
 - NBR 6123 - FORÇAS DEVIDAS AO VENTO EM EDIFICAÇÕES
 - NBR 7480 - AÇO DESTINADO A ARMADURAS PARA ESTRUTURAS DE CONCRETO ARMADO - ESPECIFICAÇÃO
 - NBR 12655 - CONCRETO DE CIMENTO PORTLAND - PREPARO, CONTROLE E RECEBIMENTO - PROCEDIMENTO
 - 14432 - EXIGÊNCIAS DE RESISTÊNCIA AO FOGO DE ELEMENTOS CONTRUTIVOS DE EDIFICAÇÕES - PROCEDIMENTO
 - 14931 - EXECUÇÃO DE ESTRUTURAS DE CONCRETO - PROCEDIMENTO
- DOCUMENTOS DE REFERÊNCIA:
 - O cálculo e dimensionamento desta fundação foi feito com base nas sondagens de reconhecimento SPT 1196/21, realizado no dia 24/03/2022 pela empresa GOLDEN TECNOLOGIA EM CONSTRUÇÃO
 - Executar sob todas as sapatas camada de 5cm de concreto de regularização (magro)

Relação do aço

CAÇO	N	DIAM (mm)	QUANT	C.UNIT (cm)	C.TOTAL (cm)
CA60	1	5.0	293	80	23440
	2	5.0	36	24	864
	3	5.0	16	24	384
CA50	4	8.0	192	104	19968
	5	8.0	61	109	6649
	6	8.0	67	114	7638
	7	8.0	50	119	5950
	8	8.0	31	124	3844
	9	8.0	20	139	2780
	10	10.0	124	142	17608
	11	12.5	16	150	2400
	12	16.0	4	160	640

Resumo do aço

CAÇO	DIAM (mm)	C.TOTAL (m)	QUANT + 10 % (Barras)	PESO + 10 % (kg)
CA50	8.0	468.3	43	203.3
	10.0	176.1	17	119.4
	12.5	24	3	25.4
CA60	16.0	6.4	1	11.1
	5.0	246.9	23	41.9
PESO TOTAL (kg)				
CA50		359.2		
CA60		41.9		

Volume de concreto (C-30) = 9.41 m³
Área de forma = 55.8 m²

REV	Descrição da revisão	Data	Autor
00	Emissão inicial	07/2022	André

MUNICÍPIO DE PATO BRANCO
 Secretaria de Engenharia e Obras
 Rua Caramuru, 271 - Centro - 46.323-250/8
 - engenharia@pato Branco.pr.gov.br

PROJETO
ESTRUTURAL
 CONTRATANTE
Prefeitura Municipal de Pato Branco
 REFERÊNCIA
 Centro de Referência em Cidadania ao Idoso - CRECI
 ESPECIFICAÇÃO
 Sapatas do Pavimento Térreo
 AUTOR DO PROJETO
Eng. Civil Daniel Parcianelo
 CREA: 072040/D

PRANCHA
3/7
 ESCALA
 Escala
 DATA
 07/2022
 DESENHO
 André