

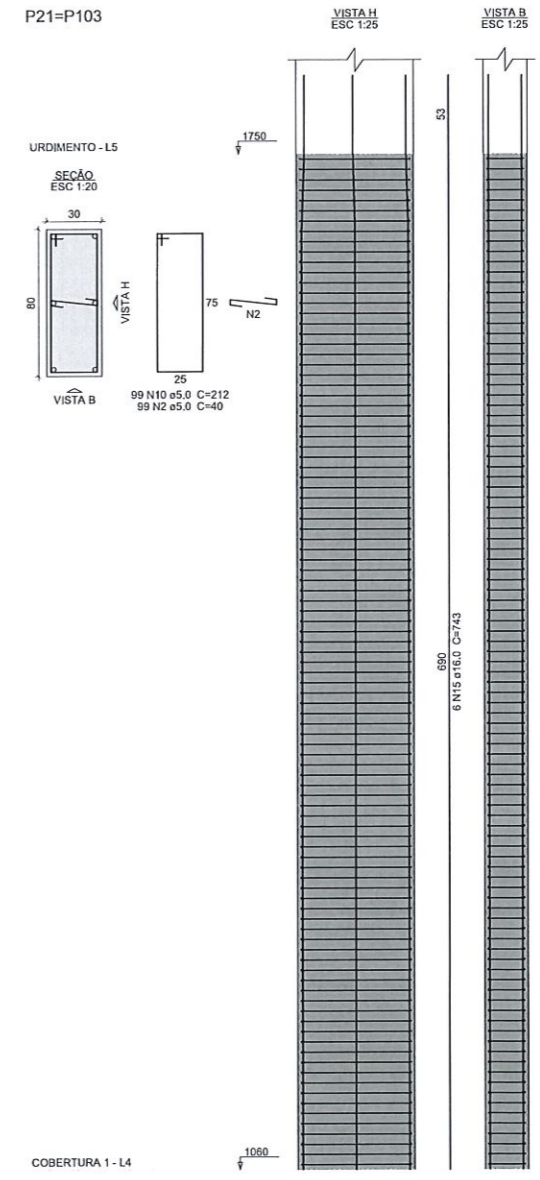
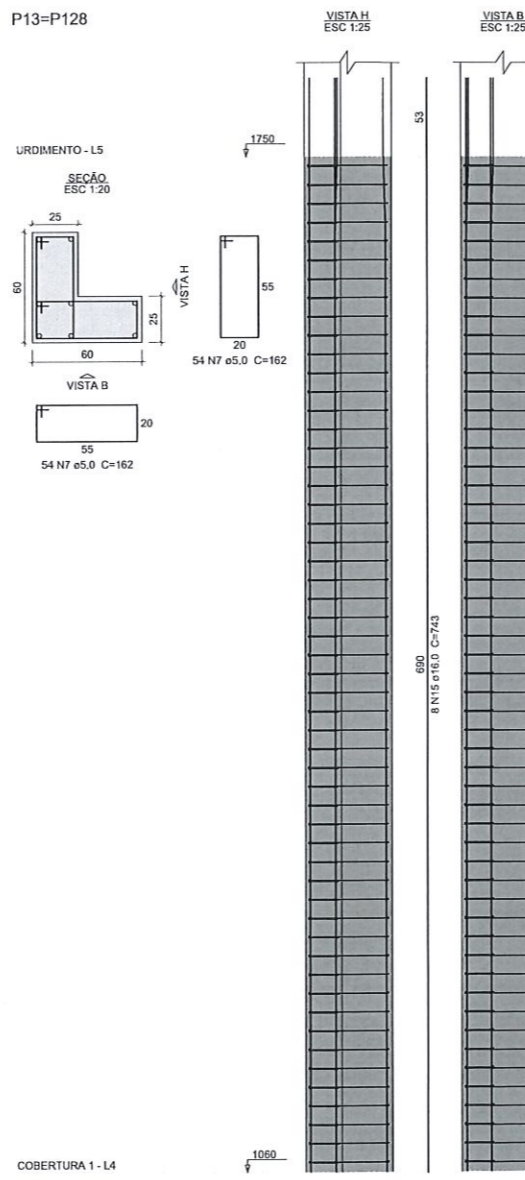
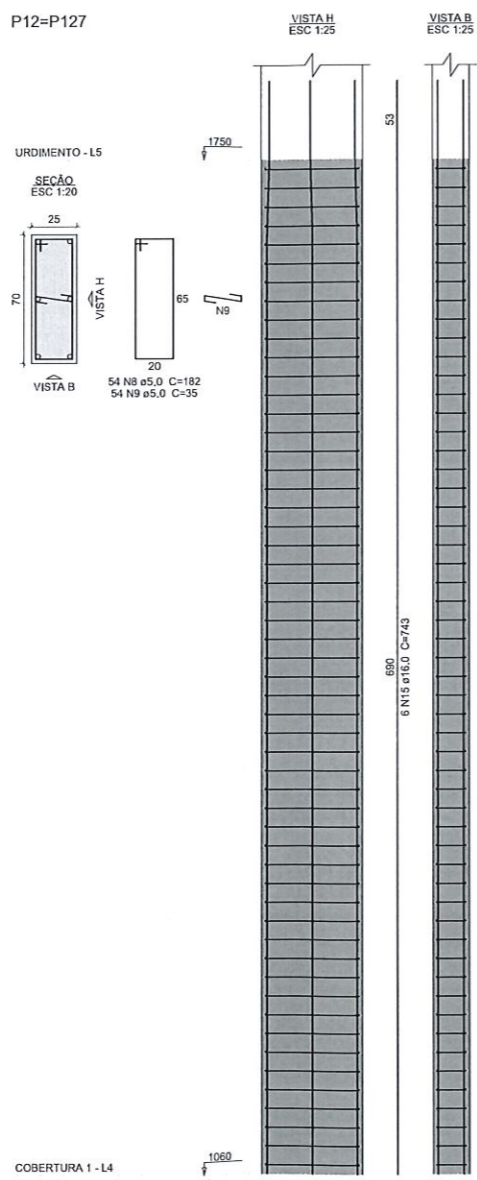
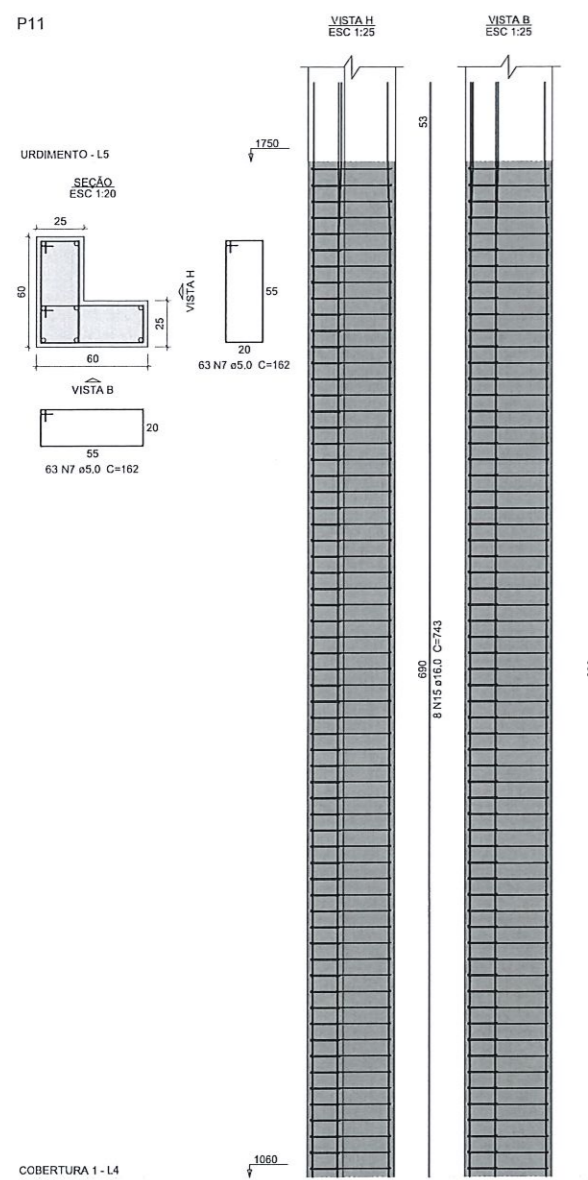
**Relação do aço**

ACO	N	DIAM (mm)	QUANT	C.UNIT (cm)	C.TOTAL (cm)
CA60	1	5.0	12	192	2304
CA60	2	5.0	222	40	8880
CA60	3	5.0	17	232	3944
CA60	4	5.0	34	30	1020
CA60	5	5.0	24	242	5808
CA60	6	5.0	48	30	1440
CA60	7	5.0	312	162	50504
CA60	8	5.0	108	182	19656
CA60	9	5.0	108	35	3780
CA60	10	5.0	198	212	41976
CA60	11	6.3	27	182	4914
CA60	12	6.3	81	26	2106
CA60	13	12.5	8	212	1696
CA60	14	16.0	26	212	5512
CA60	15	16.0	48	743	35664

**Resumo do aço**

ACO	DIAM (mm)	C.TOTAL (m)	PESO + 10 % (kg)
CA50	6.3	70.2	18.9
CA50	12.5	17	18
CA60	5.0	1442.2	714.9
CA60	5.0	1442.2	244.5
<b>PESO TOTAL (kg)</b>			
CA50		751.8	
CA60		244.5	

Volume de concreto (C-30) = 12.23 m<sup>3</sup>  
Área de forma = 125.18 m<sup>2</sup>



Nº	Comentário	Data	Autor
0	Emissão inicial		

**ALGETEC ENGENHARIA E CONSTRUÇÃO**  
Rua João Pessoa, 880 - sl B - Santa Terezinha  
Pato Branco/PR  
46. 99102 2782  
www.algetec.eng.br

PROJETO ESTRUTURAL

Resp. Técnico: Eng. Civil Daniel Parciagliolo, CREA: 072040/D  
Eng. Civil André Mateus Canan, CREA: 193875/D  
Eng. Civil Loriane C. Parcianello, CREA: 172355/D

Proprietário: Município de Pato Branco

End: Rua Jacietha, Pato Branco/PR

Obra: Teatro Municipal Naura Rigon

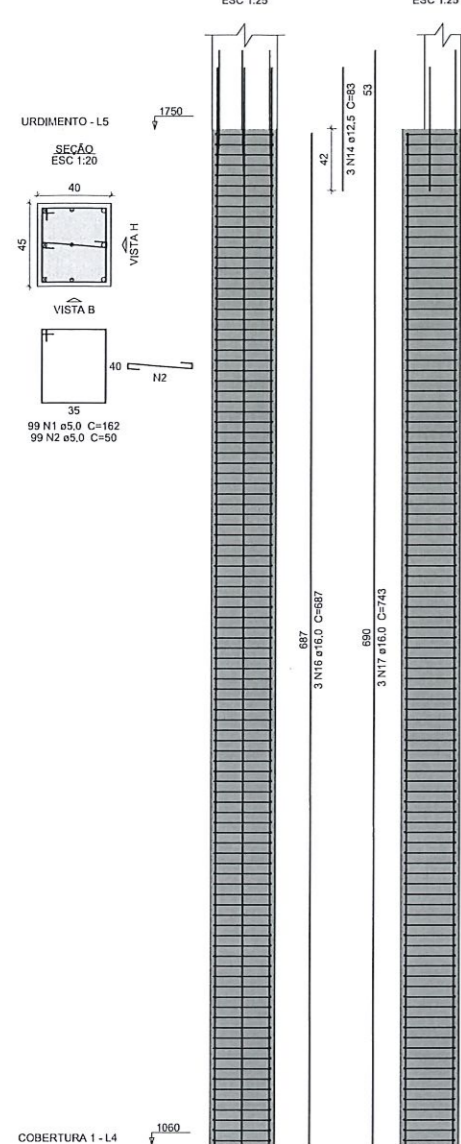
Referência: Pavimento: Urdimento Pilares 1

Data: 12/07/2021

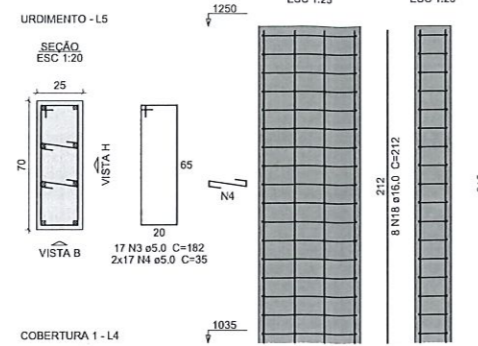
Local: Indicada

**38**  
**93**

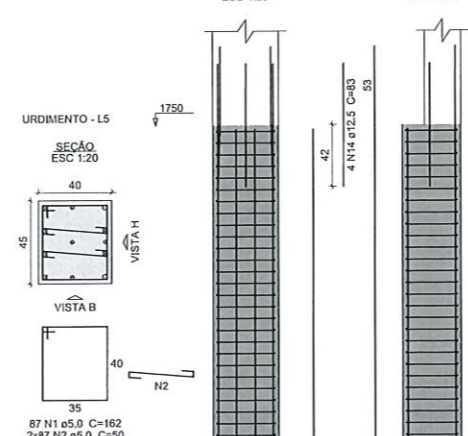
P35=P92



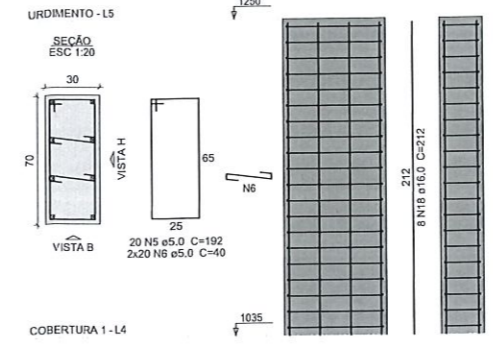
P61



P73



P91



Relação do aço

AÇO	N	DIAM (mm)	QUANT	C.UNIT (cm)	C.TOTAL (cm)
CA60	1	5.0	285	162	46170
	2	5.0	372	50	18600
	3	5.0	51	182	9282
	4	5.0	51	35	1785
	5	5.0	20	192	3840
	6	5.0	40	40	1600
	7	5.0	17	35	595
	8	5.0	18	132	2376
	9	5.0	84	30	2520
	10	5.0	24	242	5808
	11	5.0	22	252	5544
	12	5.0	88	30	2640
CA50	13	10.0	12	212	2544
	14	12.5	10	83	830
	15	12.5	6	212	1272
	16	16.0	12	687	8244
	17	16.0	8	743	5944
	18	16.0	38	212	8056

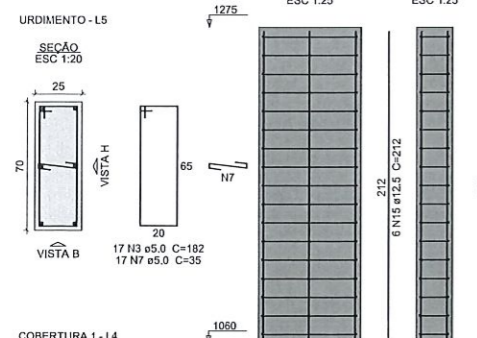
Resumo do aço

AÇO	DIAM (mm)	C.TOTAL (m)	PESO + 10 % (kg)
CA50	10.0	25.5	17.3
	12.5	21.1	22.3
	16.0	222.5	386.2
CA60	5.0	1007.6	170.8

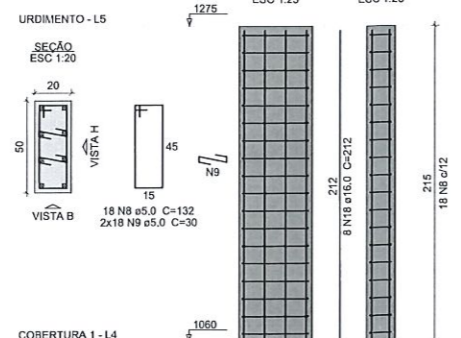
PESO TOTAL (kg)	
CA50	425.7
CA60	170.8

Volume de concreto (C-30) = 6.45 m³  
Área de forma = 65.72 m²

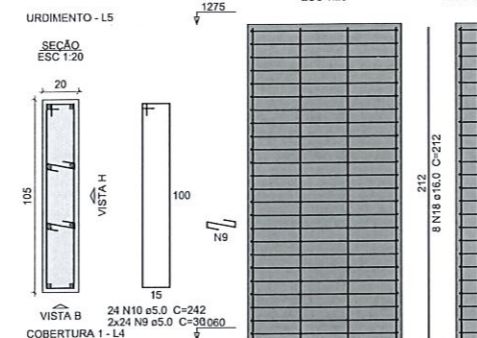
P116



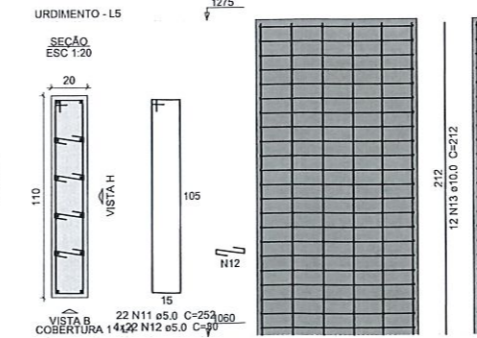
P117



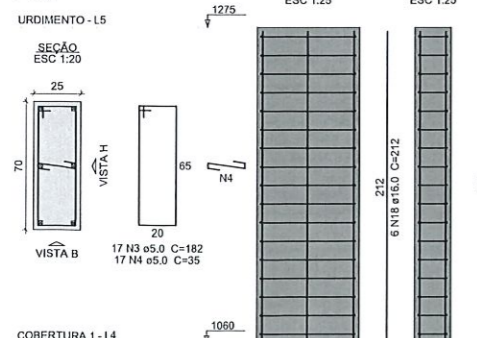
P120



P121



P122



Nº	Comentário	Data	Autor
0	Emissão Inicial		

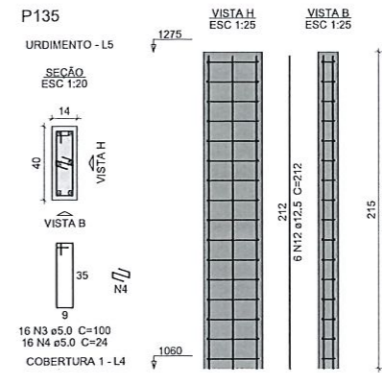
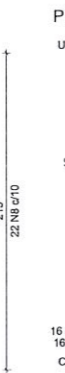
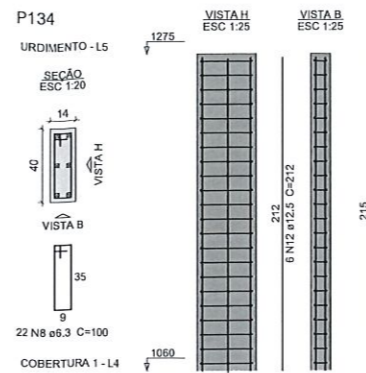
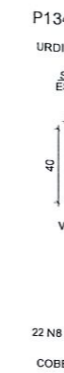
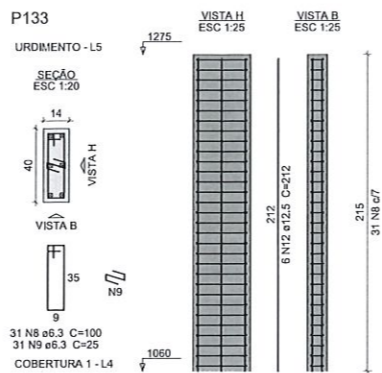
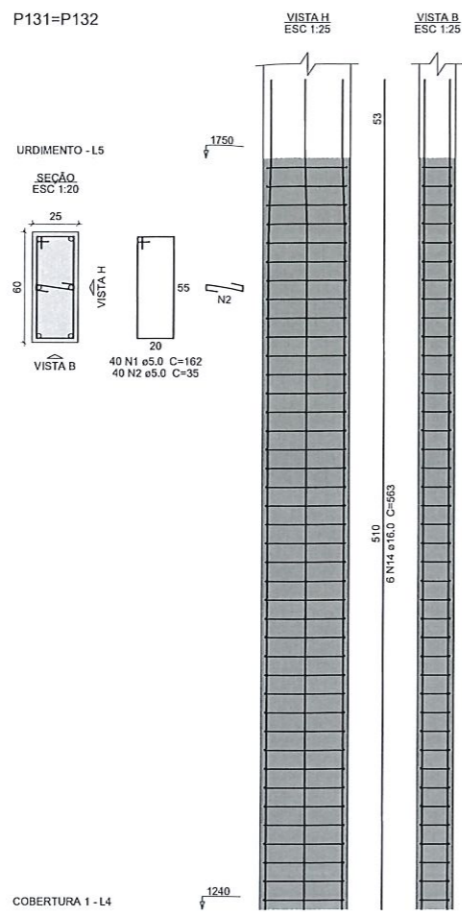
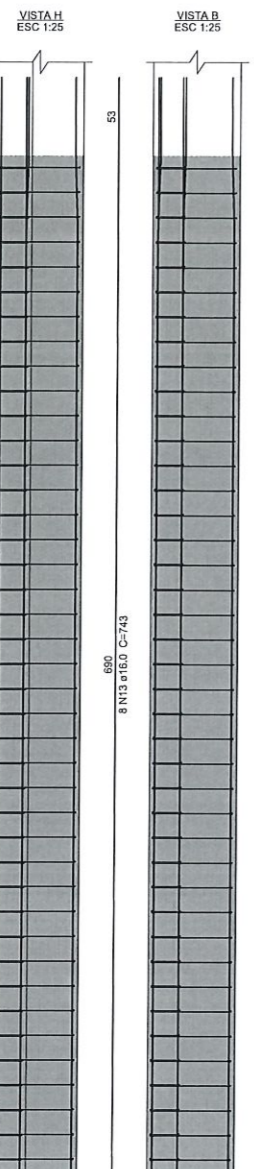
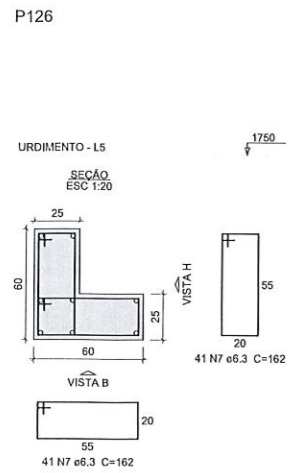
**ALGETEC**  
ENGENHARIA E CONSTRUÇÃO

**ALGETEC ENGENHARIA E CONSTRUÇÃO**  
Rua João Pessoa, 880 - sl B - Santa Terezinha  
Pato Branco/PR  
46. 99102-2782  
www.algetec.eng.br

PROJETO ESTRUTURAL

---

<p>Resp. Técnico: Eng. Civil Daniel Perdigão, CREA: 072040/D Eng. Civil André Matsuo Canan, CREA: 193875/D Eng. Civil Loriane Carcianello, CREA: 172355/D</p>	<p>Proprietário: Município de Pato Branco</p>	<p>End: Rua Jaciretã, Pato Branco/PR Data: 12/07/2021</p>
<p>Obra: Teatro Municipal Naura Rigon</p>	<p>Indicada</p>	39
<p>Referência: Pavimento: Urdimento Pilares 2</p>		93



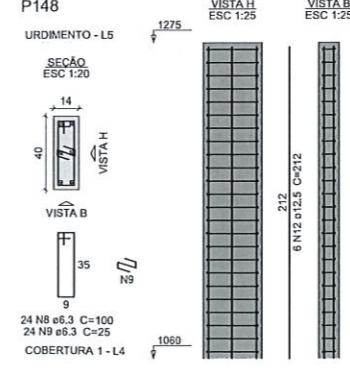
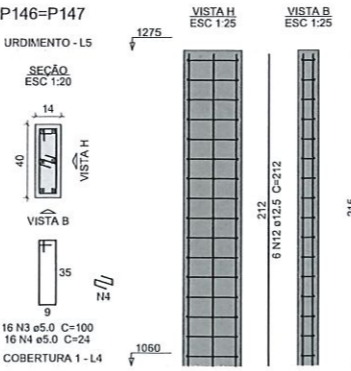
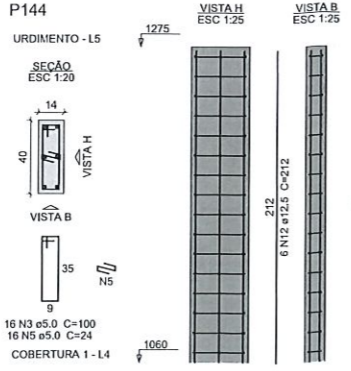
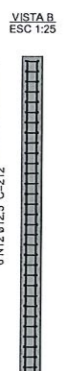
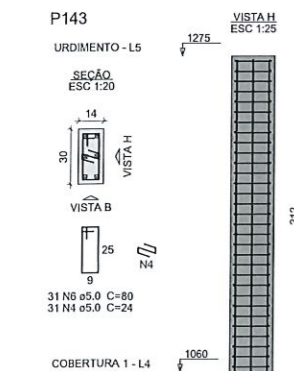
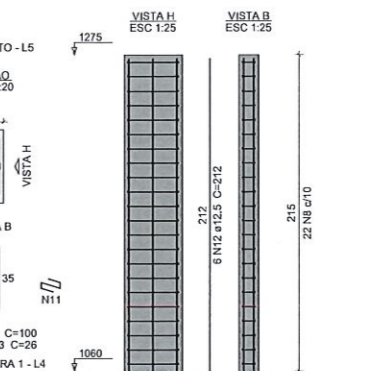
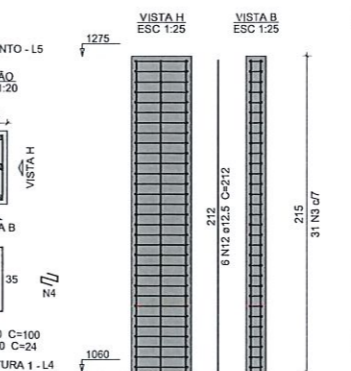
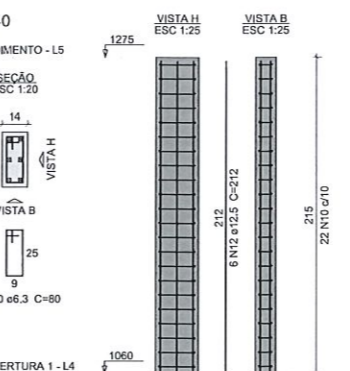
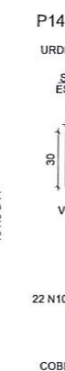
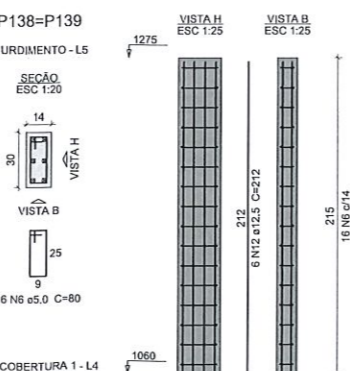
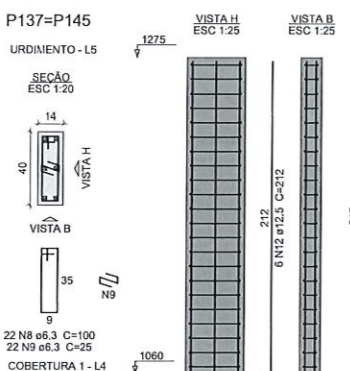
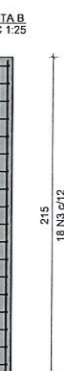
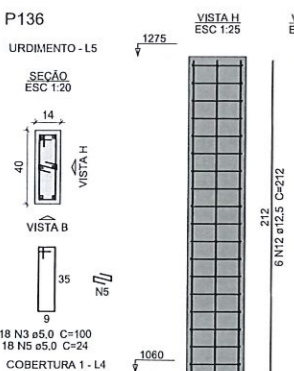
**Relação do aço**

AÇO	N	DIAM (mm)	QUANT	C.UNIT (cm)	C.TOTAL (cm)
CA60	1	5.0	80	162	12960
	2	5.0	80	35	2800
	3	5.0	113	100	11300
	4	5.0	110	24	2640
	5	5.0	34	24	816
CA50	6	5.0	63	80	5040
	7	6.3	82	162	13284
	8	6.3	143	100	14300
	9	6.3	99	25	2475
	10	6.3	22	80	1760
	11	6.3	22	26	572
	12	12.5	96	212	20352
	13	16.0	8	743	5944
	14	16.0	12	593	9756

**Resumo do aço**

AÇO	DIAM (mm)	C.TOTAL (m)	PESO + 10 % (kg)
CA50	6.3	324	87.2
CA50	12.5	203.6	215.7
CA50	16.0	127	220.5
CA60	5.0	355.6	60.3
<b>PESO TOTAL (kg)</b>			
CA50		523.3	
CA60		60.3	

Volume de concreto (C-30) = 4.97 m³  
Área de forma = 69.33 m²



Nº	Comentário	Data	Autor
0	Emissão inicial		

**ALGETEC ENGENHARIA E CONSTRUÇÃO**  
Rua João Pessoa, 880 - sl B - Santa Terezinha  
Pato Branco/PR  
46.99102-2782  
www.algetec.eng.br

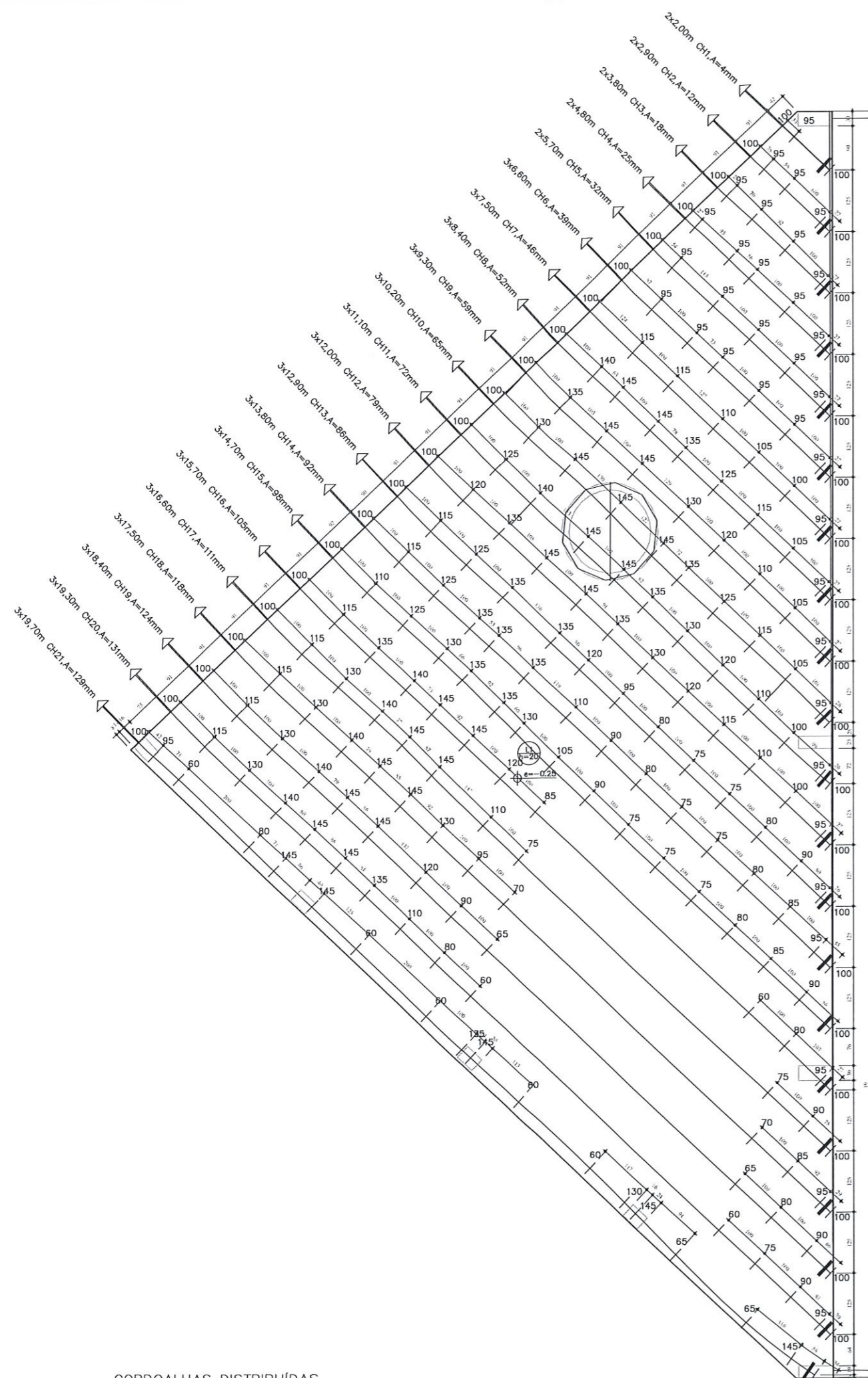
Proprietário: Município de Pato Branco

Resp. Técnico: Eng. Civil André Mateus Góes, CREA: 072040/D  
Eng. Civil André Mateus Góes, CREA: 193875/D  
Eng. Civil Loriane C. Parciello, CREA: 172355/D

End: Rua Jacirelá, Pato Branco/PR  
Ora: Teatro Municipal Naura Rigon  
Referência: Pavimento: Urldimento Pilares 3

12/07/2021  
Indicada

**40**  
93




CORDOALHAS DISTRIBUÍDAS  
Esc: 1:50

RESUMO DOS CABOS DISTRIBUIDOS				
CABO	QUANT.	COMPR. UNIT. (m)	COMPR. TOTAL (m)	PESO TOTAL (kg)
CH1	2	2,00	4,00	3,60
CH2	2	2,90	5,80	5,20
CH3	2	3,80	7,60	6,80
CH4	2	4,80	9,60	8,50
CH5	2	5,70	11,40	10,10
CH6	3	6,60	19,80	17,60
CH7	3	7,50	22,50	20,00
CH8	3	8,40	25,20	22,40
CH9	3	9,30	27,90	24,80
CH10	3	10,20	30,60	27,20
CH11	3	11,10	33,30	29,60
CH12	3	12,00	36,00	32,00
CH13	3	12,90	38,70	34,40
CH14	3	13,80	41,40	36,80
CH15	3	14,70	44,10	39,30
CH16	3	15,70	47,10	41,90
CH17	3	16,60	49,80	44,30
CH18	3	17,50	52,50	46,70
CH19	3	18,40	55,20	49,10
CH20	3	19,30	57,90	51,50
CH21	3	19,70	59,10	52,60
PESO TOTAL 12,7mm CP 190 RB - ENGRAXADA				604,40

RESUMO DA ARMADURA DE FRETAGEM (Ø10,00)				
POSIÇÃO	QUANT.	COMPR. UNIT. (m)	COMPR. TOTAL (m)	PESO TOTAL + 10% (kg)
DISTRIBUIDOS	79	0,75	59,25	40,20
CONCENTRADOS	31	0,75	23,30	15,80
SOMA	110	-	82,55	56,00

Nº	Comentário	Data	Autor
0	Emissão inicial		
1	Correção no comprimento dos cabos	22/10/2021	André M. Canan



**ALGETEC**  
ENGENHARIA E CONSTRUÇÃO

**ALGETEC ENGENHARIA E CONSTRUÇÃO**  
Rua João Pessoa, 880 - sl B - Santa Terezinha  
Pato Branco/PR  
46. 99102 2782  
www.algetec.eng.br

PROJETO ESTRUTURAL

Resp. Técnico Eng. Civil Daniel Parcianeli, CREA: 072040/D Eng. Loriane Consuelo Parcianelo, CREA: 172355/D Eng. André Mateus Canan, CREA: 193875/D	Proprietário MUNICÍPIO DE PATO BRANCO CNPJ: 76.995.448/0001-54
--------------------------------------------------------------------------------------------------------------------------------------------------------------	----------------------------------------------------------------------

Encl. Quadra 191 - Lote 03 e 14 Pato Branco - Paraná	Data 12/07/2021
Obra Teatro Municipal Naura Rigon	Escala Indicada

Referência Laje Pretendida - Cobertura 1 Cordoalhas Distribuídas e Concentradas da Laje	41 45
--------------------------------------------------------------------------------------------	----------

V1 V2 V3  
V4 V5 V6  
V7 V8 V9  
V10

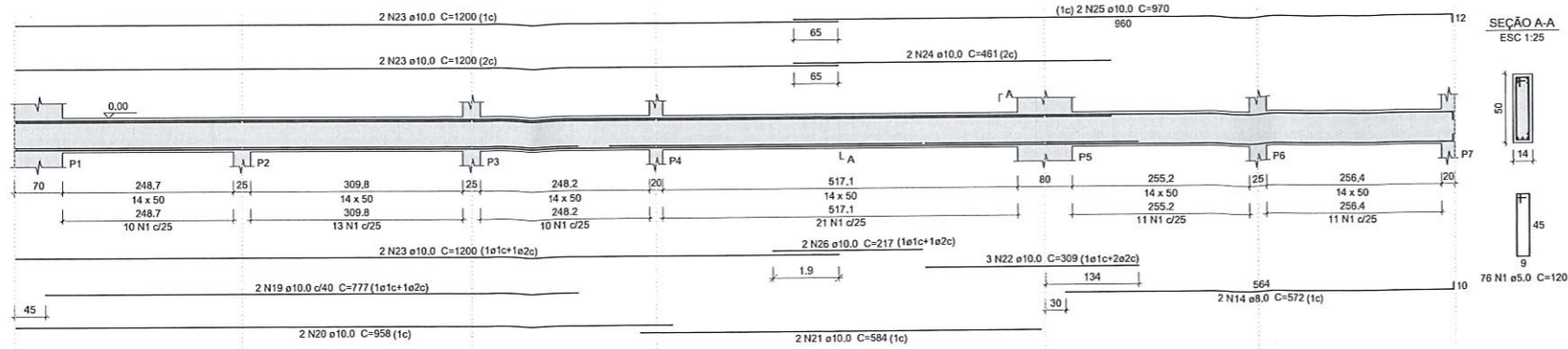
CAO	N	DIAM (mm)	QUANT	C.UNIT (cm)	C.TOTAL (cm)
CA60	1	5.0	145	120	17400
	2	5.0	42	290	12180
	3	5.0	118	100	11800
	4	5.0	23	280	6440
	5	5.0	4	220	880
	6	5.0	16	340	5440
CA50	7	6.3	16	1200	19200
	8	6.3	16	64	1024
	9	6.3	14	607	8498
	10	6.3	10	143	1430
	11	6.3	4	322	1288
	12	6.3	18	323	5814
	13	6.3	1	71	71
	14	8.0	2	572	1144
	15	8.0	1	282	282
	16	8.0	2	1169	2338
	17	8.0	2	182	364
	18	8.0	2	242	484
	19	10.0	2	777	1554
	20	10.0	2	958	1916
	21	10.0	2	584	1168
	22	10.0	3	309	927
	23	10.0	6	1200	7200
	24	10.0	2	481	922
	25	10.0	2	970	1940
	26	10.0	2	217	434
	27	10.0	4	482	1928
	28	10.0	2	509	1018
	29	10.0	2	512	1024
	30	12.5	2	1183	2366
	31	12.5	2	426	852
	32	12.5	2	450	900
	33	12.5	2	183	366
	34	12.5	2	187	374
	35	12.5	2	326	652
	36	12.5	2	330	660
	37	12.5	4	306	1224
	38	12.5	2	464	928
	39	12.5	2	467	934
	40	12.5	2	471	942
	41	12.5	2	475	950
	42	16.0	2	588	1172
	43	16.0	2	584	1168
	44	16.0	2	1101	2202
	45	16.0	2	185	370
	46	16.0	2	184	368
	47	16.0	2	756	1512
	48	16.0	2	767	1534
	49	16.0	1	120	120
	50	16.0	1	151	151
	51	16.0	2	155	310
	52	16.0	1	140	140
	53	16.0	1	206	206
	54	16.0	2	214	428
	55	16.0	2	1098	2196
	56	16.0	2	203	406
	57	16.0	2	1200	2400
	58	16.0	2	95	190
	59	20.0	1	600	600
	60	20.0	2	603	1206

Resumo do aço

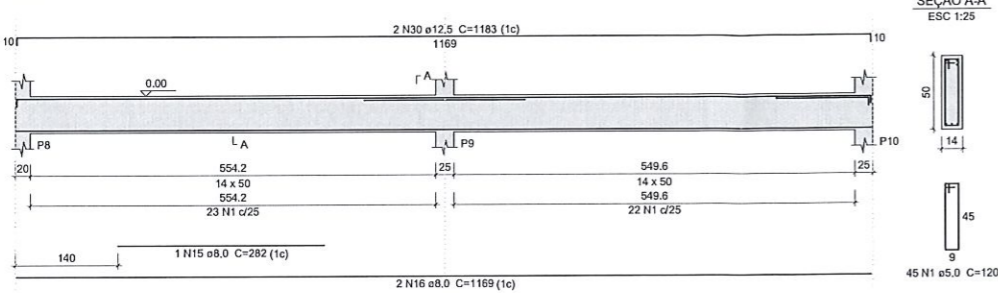
CAO	DIAM (mm)	C.TOTAL (m)	PESO + 10% (kg)
CA50	6.3	373.3	100.5
	8.0	46.2	20
	10.0	200.4	135.8
	12.5	111.5	118.1
	16.0	148.8	253.2
	20.0	18.1	49
CA60	5.0	541.4	91.8
PESO TOTAL (kg)			
CA50		681.7	
CA60		91.8	

Volume de concreto (C-30) = 8.03 m³  
Área de forma = 125.82 m²

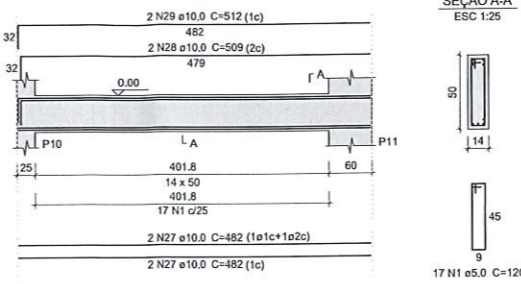
V1  
ESC 1:50



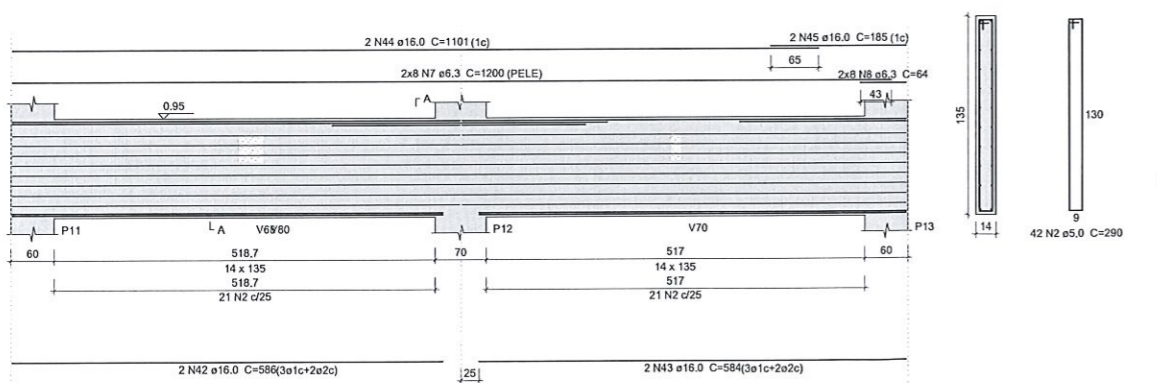
V2  
ESC 1:50



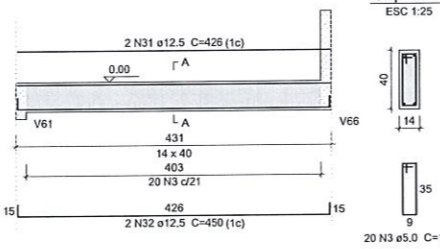
V3  
ESC 1:50



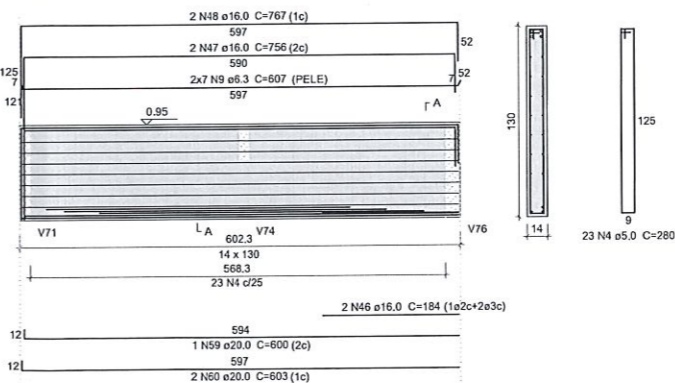
V4  
ESC 1:50



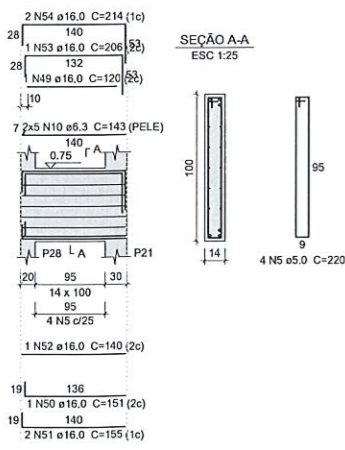
V5  
ESC 1:50



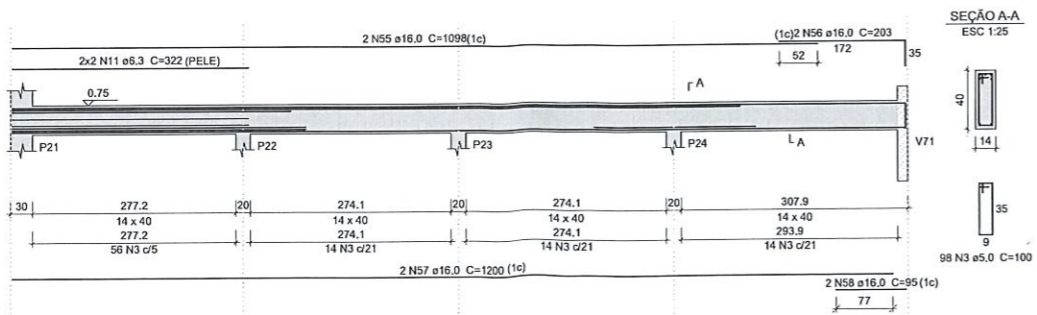
V6  
ESC 1:50



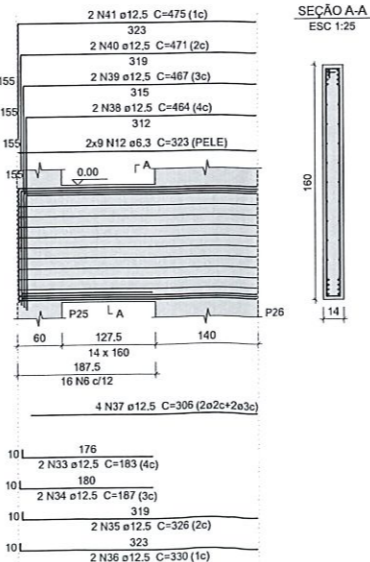
V7  
ESC 1:50



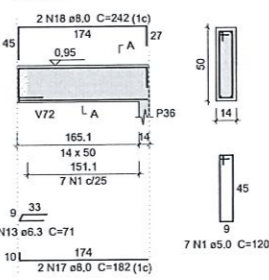
V8  
ESC 1:50



V9  
ESC 1:50



V10  
ESC 1:50



**ALGETEC**  
ENGENHARIA E CONSTRUÇÃO

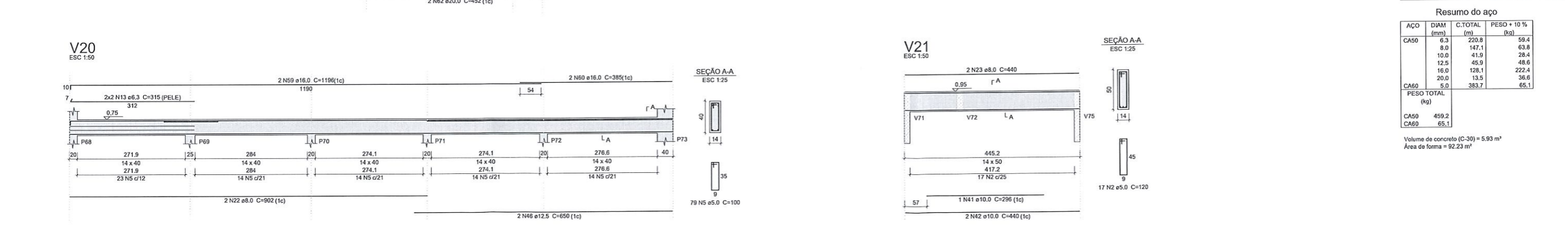
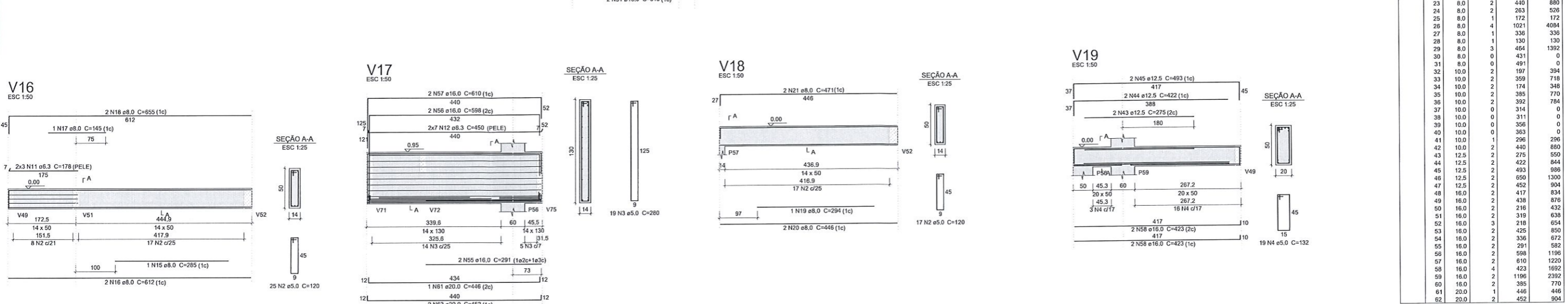
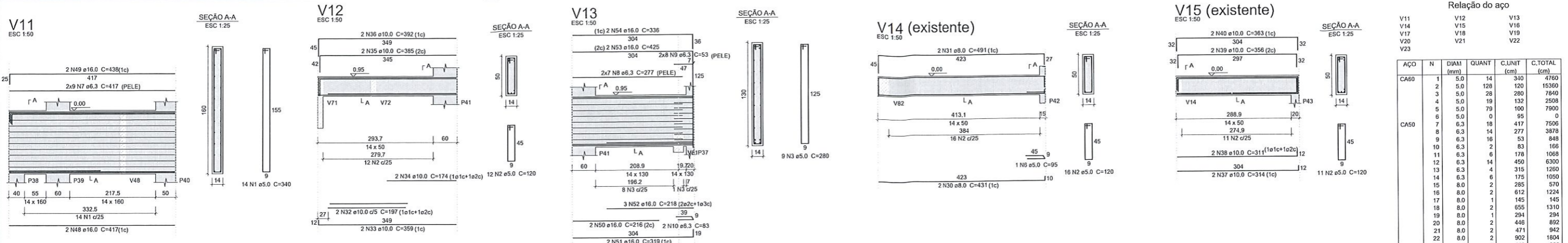
**ALGETEC ENGENHARIA E CONSTRUÇÃO**  
Rua João Pessoa, 880 - sl B - Santa Terezinha  
Pato Branco/PR  
46.99102-2782  
www.algetec.eng.br

PROJETO  
ESTRUTURAL

Resp. Técnico	Eng. Civil Daniel Parcianello, CREA: 072040/D Eng. Civil André Mateus Canan, CREA: 193879/D Eng. Civil Loriane C. Parcianello, CREA: 172355/D	Proprietário	Município de Pato Branco - PR
End.	Rua Jacirelá Pato Branco/PR	Data	12/07/2021
Obra	Teatro Municipal Naura Rigon	Escala	Indicada
Referência	Pavimento: Térreo Vigas 1		

42

93



Relação do aço

CAÇO	N	DIAM (mm)	QUANT	C.UNIT (cm)	C.TOTAL (cm)
CA60	1	5.0	14	310	4760
	2	5.0	128	120	15360
	3	5.0	28	280	7840
	4	5.0	19	130	2508
	5	5.0	79	100	7900
	6	5.0	0	95	0
	7	6.3	18	417	7506
	8	6.3	14	277	3878
	9	6.3	16	53	848
	10	6.3	2	83	166
	11	6.3	6	178	1068
	12	6.3	14	450	6300
	13	6.3	4	315	1260
	14	6.3	6	175	1050
	15	8.0	2	385	570
	16	8.0	2	612	1224
	17	8.0	1	145	145
	18	8.0	2	655	1310
	19	8.0	1	294	294
	20	8.0	2	446	892
	21	8.0	2	471	942
	22	8.0	2	902	1804
	23	8.0	2	440	880
	24	8.0	2	263	526
	25	8.0	1	172	172
	26	8.0	4	1021	4084
	27	8.0	1	336	336
	28	8.0	1	130	130
	29	8.0	3	464	1392
	30	8.0	0	431	0
	31	8.0	0	491	0
	32	10.0	2	197	394
	33	10.0	2	359	718
	34	10.0	2	174	348
	35	10.0	2	385	770
	36	10.0	2	392	784
	37	10.0	0	314	0
	38	10.0	0	311	0
	39	10.0	0	356	0
	40	10.0	0	363	0
	41	10.0	1	296	296
	42	10.0	2	440	880
	43	12.5	2	270	540
	44	12.5	2	422	844
	45	12.5	2	493	986
	46	12.5	2	650	1300
	47	12.5	2	452	904
	48	16.0	2	417	834
	49	16.0	2	438	876
	50	16.0	2	216	432
	51	16.0	2	319	638
	52	16.0	3	218	654
	53	16.0	2	425	850
	54	16.0	2	336	672
	55	16.0	2	291	582
	56	16.0	2	598	1196
	57	16.0	2	610	1220
	58	16.0	4	423	1692
	59	16.0	2	1196	2392
	60	16.0	2	385	770
	61	20.0	1	446	446
	62	20.0	2	452	904

Resumo do aço

CAÇO	DIAM (mm)	C.TOTAL (m)	PESO + 10% (kg)
CA50	6.3	220.8	59.4
	8.0	147.1	63.8
	10.0	41.9	28.4
	12.5	45.9	48.6
	16.0	128.1	222.4
	20.0	13.5	36.6
CA60	5.0	383.7	65.1
PESO TOTAL (kg)			
CA50		459.2	
CA60		65.1	

Volume de concreto (C-30) = 5.93 m³  
Área de forma = 92.23 m²

**ALGETEC ENGENHARIA E CONSTRUÇÃO**  
Rua João Pessoa, 880 - sl B - Santa Terezinha  
Pato Branco/PR  
FONE: 46-98102 2782  
www.algetec.eng.br

Projeto Estrutural

Nº	Comentário	Data	Autor
0	Emissão inicial		
1	Identificação das Vigas 14 e 15 como existentes	31/08/2021	André M. Canan

Proprietário: Município de Pato Branco - PR

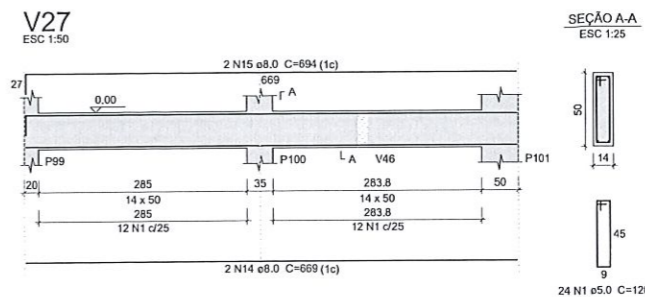
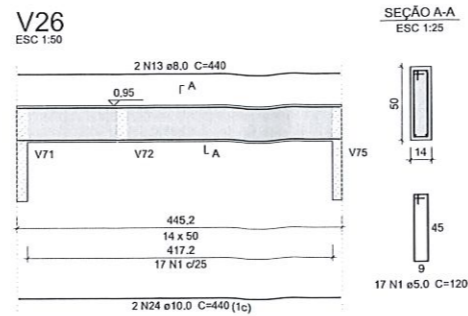
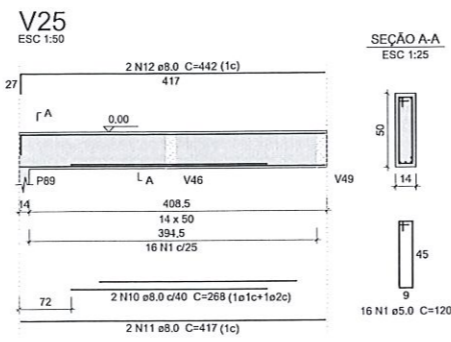
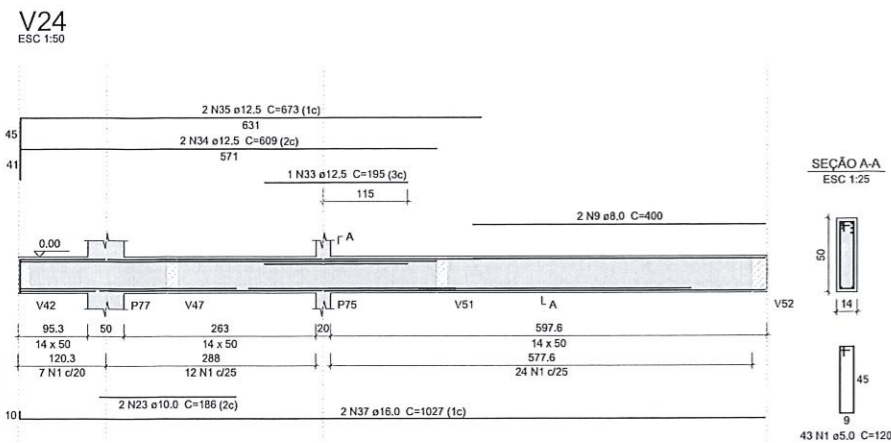
Resp. Técnico: Eng. Civil Daniel Parclanello, CREA: 072040/D  
Eng. Civil André Mateus Canan, CREA: 193879/D  
Eng. Civil Loriane C. Parclanello, CREA: 172355/D

End.: Rua Jacirelá, Pato Branco/PR  
Data: 12/07/2021

Obra: Teatro Municipal Naura Rigon  
Indicada

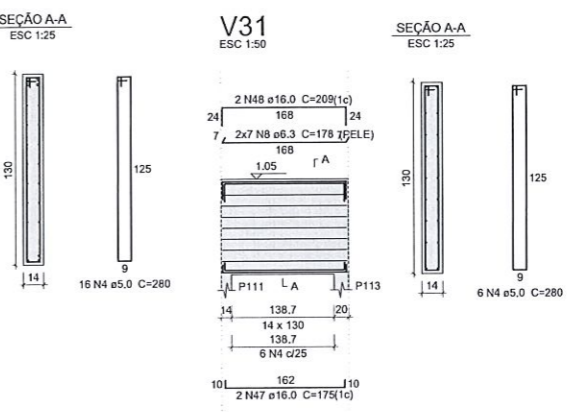
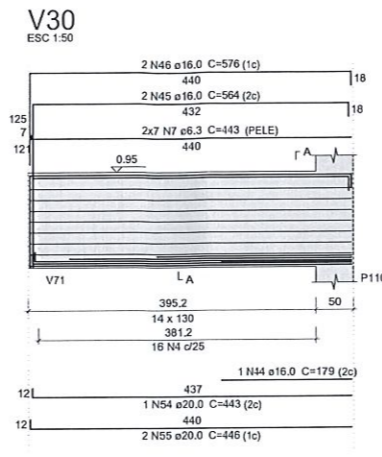
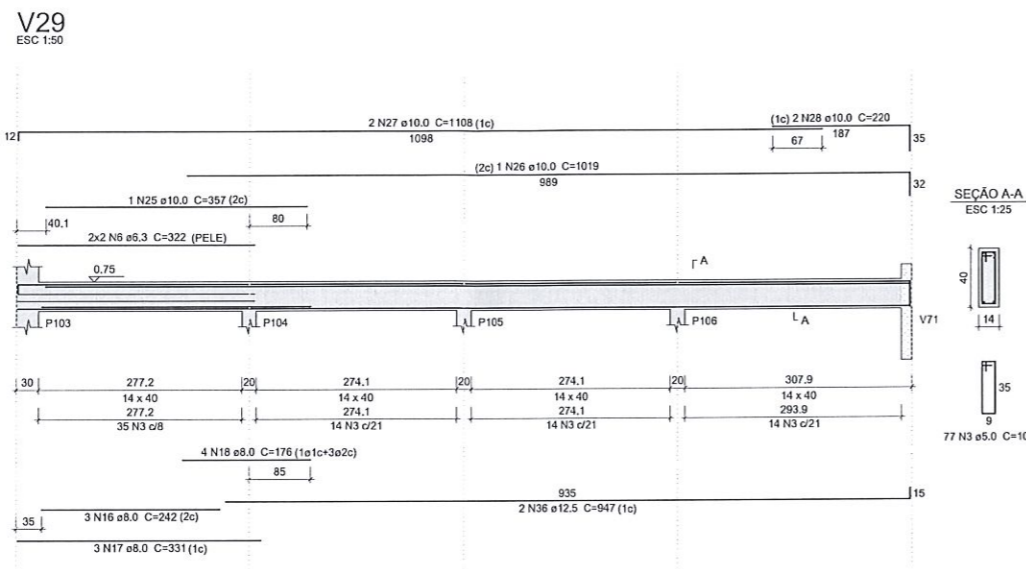
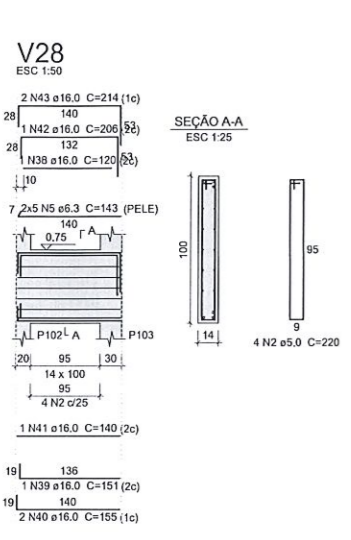
Referência: Pavimento: Térreo  
Vigas 2

**43**  
93



Relação do aço

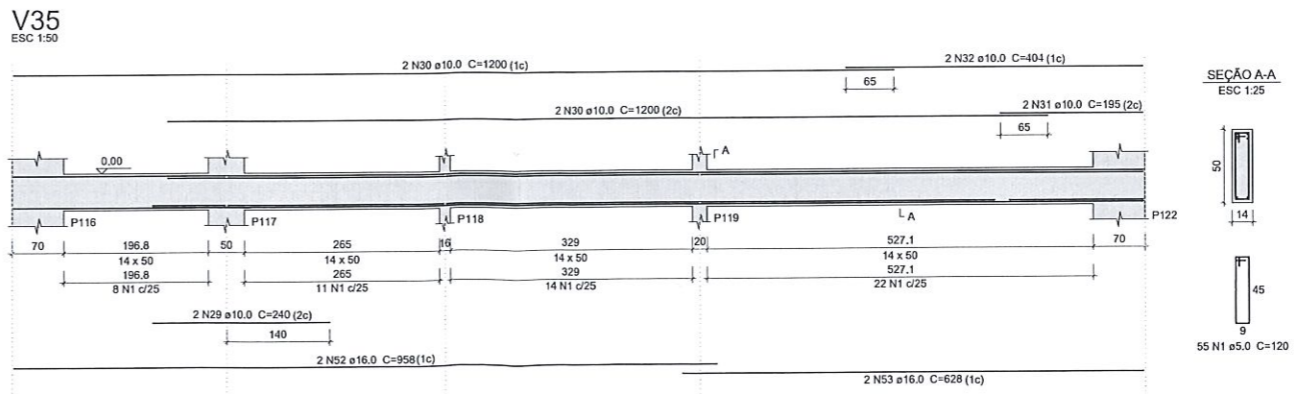
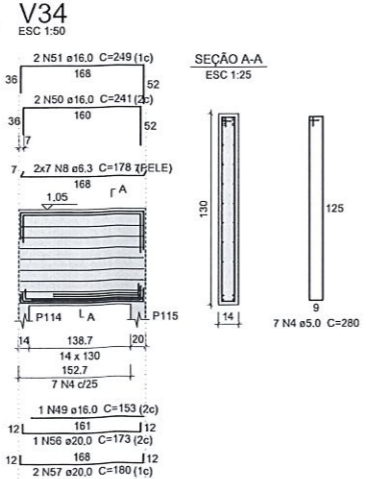
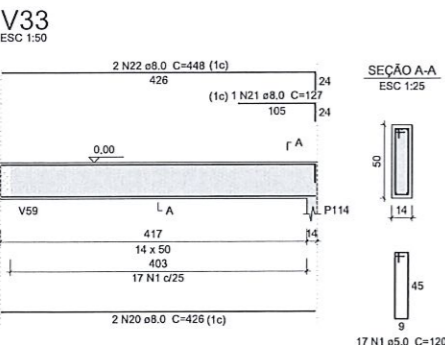
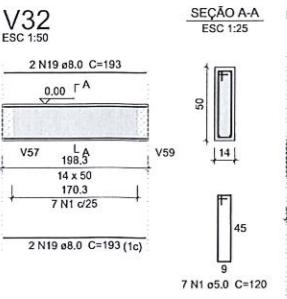
AÇO	N	DIAM (mm)	QUANT	C.UNIT (cm)	C.TOTAL (cm)
CA60	1	5.0	179	120	21480
	2	5.0	4	220	880
	3	5.0	77	100	7700
	4	5.0	29	260	8120
CA50	5	6.3	10	143	1430
	6	6.3	4	322	1288
	7	6.3	14	443	6202
	8	6.3	28	178	4984
	9	6.3	2	400	800
	10	8.0	2	268	536
	11	8.0	2	417	834
	12	8.0	2	442	884
	13	8.0	2	440	880
	14	8.0	2	669	1338
	15	8.0	2	694	1388
	16	8.0	3	242	726
	17	8.0	3	331	993
	18	8.0	4	176	704
	19	8.0	4	193	772
	20	8.0	2	426	852
	21	8.0	1	127	127
	22	8.0	2	448	896
	23	10.0	2	166	332
	24	10.0	2	440	880
	25	10.0	1	357	357
	26	10.0	1	1019	1019
	27	10.0	2	1108	2216
	28	10.0	2	220	440
	29	10.0	2	240	480
	30	10.0	4	1200	4800
	31	10.0	2	195	390
	32	10.0	2	404	808
	33	12.5	1	195	195
	34	12.5	2	609	1218
	35	12.5	2	673	1346
	36	12.5	2	947	1894
	37	16.0	2	1027	2054
	38	16.0	1	120	120
	39	16.0	1	151	151
	40	16.0	2	155	310
	41	16.0	1	140	140
	42	16.0	1	206	206
	43	16.0	2	214	428
	44	16.0	1	179	179
	45	16.0	2	564	1128
	46	16.0	2	576	1152
	47	16.0	2	175	350
	48	16.0	2	209	418
	49	16.0	1	153	153
	50	16.0	2	241	482
	51	16.0	2	249	498
	52	16.0	2	958	1916
	53	16.0	2	628	1256
	54	20.0	1	443	443
	55	20.0	2	446	892
	56	20.0	1	173	173
	57	20.0	2	180	360



Resumo do aço

AÇO	DIAM (mm)	C.TOTAL (m)	PESO + 10% (kg)
CA50	6.3	139.1	37.4
	8.0	117.3	50.9
	10.0	117.7	79.8
	12.5	46.6	49.3
	16.0	109.5	190
	20.0	18.7	50.7
CA60	5.0	381.8	64.7
PESO TOTAL (kg)			
CA50		458	
CA60		64.7	

Volume de concreto (C-30) = 5.65 m³  
Área de forma = 90.31 m²



**ALGETEC ENGENHARIA E CONSTRUÇÃO**  
Rua João Pessoa, 880 - sl B - Santa Terezinha  
Pato Branco/PR  
46.99102-2782  
www.algetec.eng.br

Projeto Estrutural

Proprietário: Município de Pato Branco - PR

Resp. Técnico: Eng. Civil Daniel Parcianello, CREA: 072040/D  
Eng. Civil André Mateus Carian, CREA: 193875/D  
Eng. Civil Loriane C. Parcianello, CREA: 172355/D

End.: Rua Jacirelá, Pato Branco/PR

Escala: Indicada

Data: 12/07/2021

Referência: Pavimento: Térreo, Vigas 3

**44**  
**93**

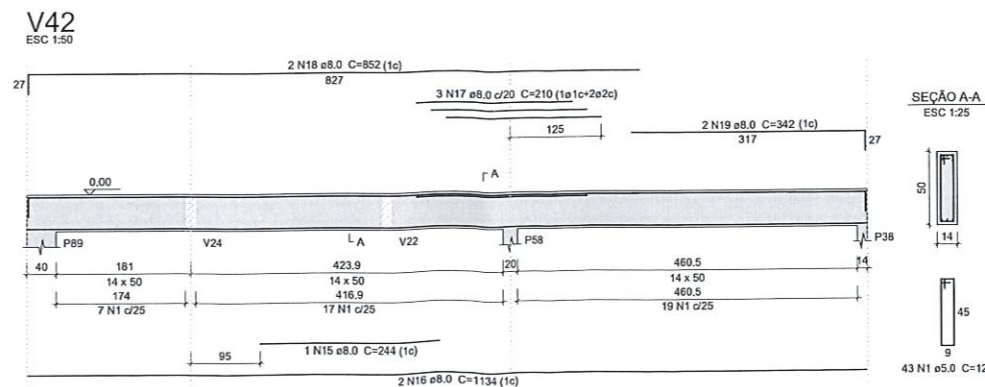
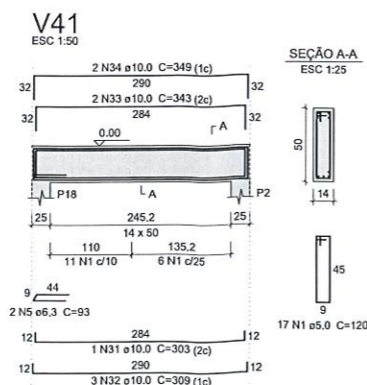
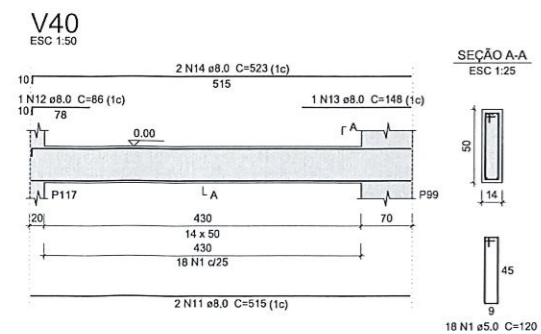
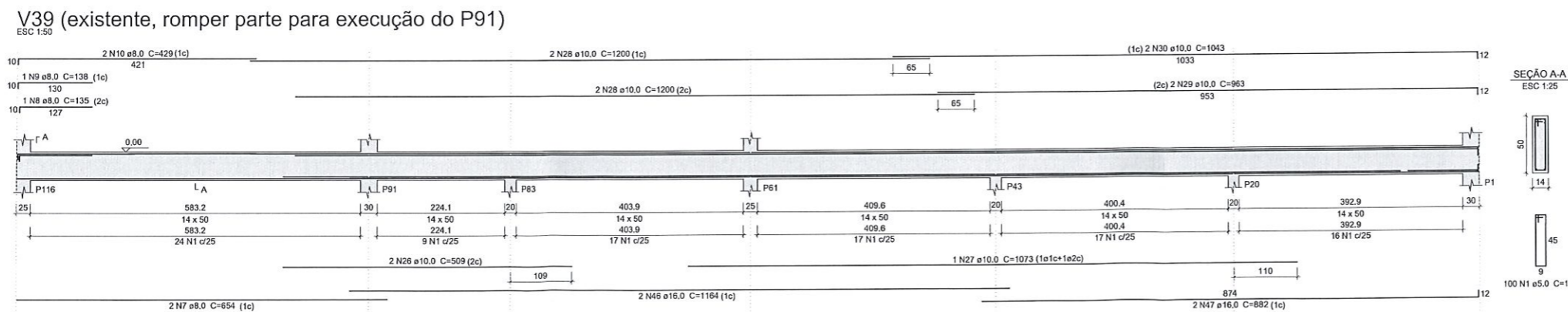
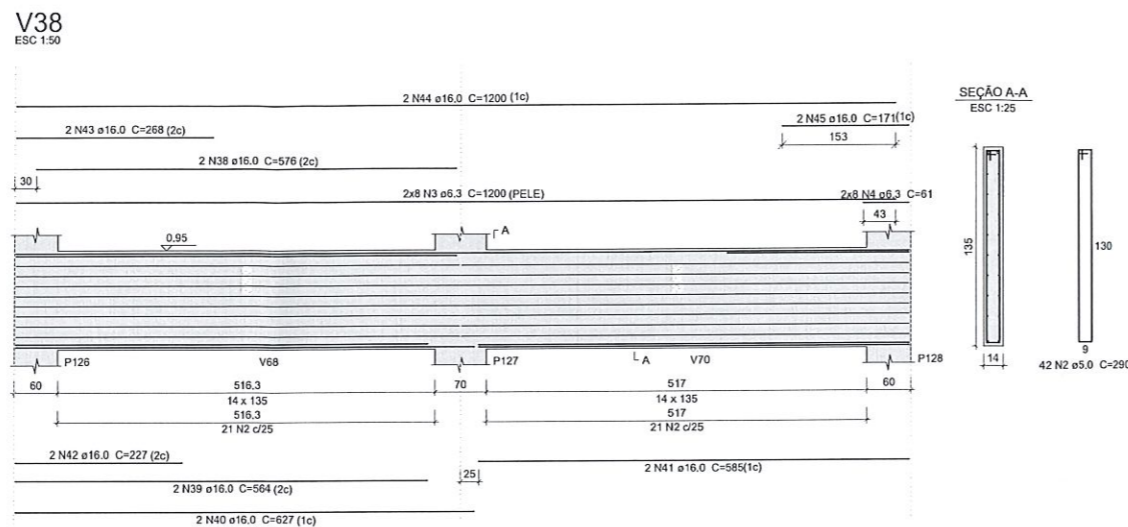
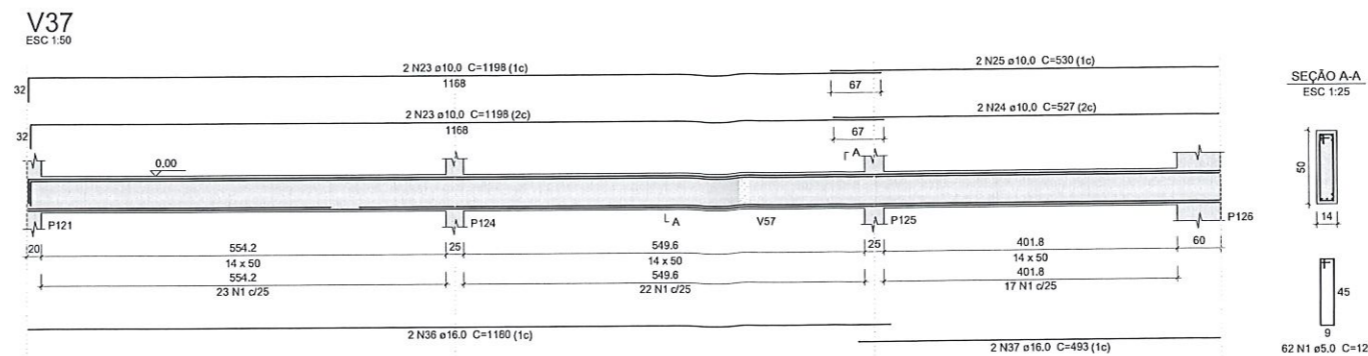
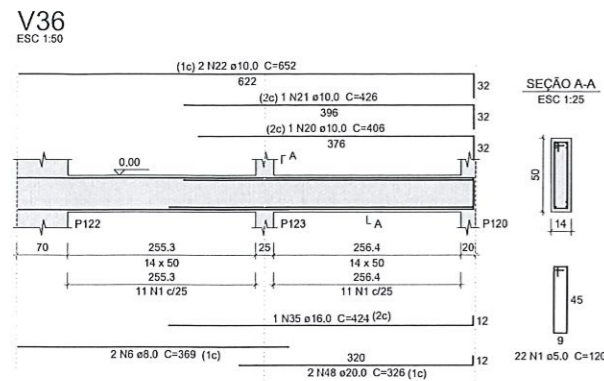
Relação do aço

AÇO	N	DIAM (mm)	QUANT	CJUNIT (cm)	C.TOTAL (cm)
CA60	1	5.0	162	120	19440
	2	5.0	42	290	12180
CA50	3	6.3	16	1200	19200
	4	6.3	16	61	976
	5	6.3	2	93	186
	6	8.0	2	369	738
	7	8.0	0	654	0
	8	8.0	0	135	0
	9	8.0	0	138	0
	10	8.0	0	429	0
	11	8.0	2	516	1030
	12	8.0	1	86	86
	13	8.0	1	148	148
	14	8.0	2	523	1046
	15	8.0	1	244	244
	16	8.0	2	1134	2268
	17	8.0	3	210	630
	18	8.0	2	852	1704
	19	8.0	2	342	684
	20	10.0	1	406	406
	21	10.0	1	426	426
	22	10.0	2	652	1304
	23	10.0	4	1188	4752
	24	10.0	2	527	1054
	25	10.0	2	530	1060
	26	10.0	0	509	0
	27	10.0	0	1073	0
	28	10.0	0	1200	0
	29	10.0	0	953	0
	30	10.0	0	1043	0
	31	10.0	1	303	303
	32	10.0	3	309	927
	33	10.0	2	343	686
	34	10.0	2	349	698
	35	16.0	1	424	424
	36	16.0	2	1180	2360
	37	16.0	2	493	986
	38	16.0	2	576	1152
	39	16.0	2	564	1128
	40	16.0	2	627	1254
	41	16.0	2	585	1170
	42	16.0	2	227	454
	43	16.0	2	268	536
	44	16.0	2	1200	2400
	45	16.0	2	171	342
	46	16.0	0	1164	0
	47	16.0	0	862	0
	48	20.0	2	326	652

Resumo do aço

AÇO	DIAM (mm)	C.TOTAL (m)	PESO + 10 % (kg)
CA50	6.3	203.7	54.8
	8.0	85.8	37.2
	10.0	116.6	79
	16.0	122.1	211.9
	20.0	6.6	17.7
CA60	5.0	316.2	53.6
PESO TOTAL (kg)			
CA50		400.7	
CA60		53.6	

Volume de concreto (C-30) = 5.26 m³  
Área de forma = 62.61 m²



Nº	Comentário	Data	Autor
0	Emissão inicial		
1	Identificação da Viga 39 como existente	19/08/2021	André M. Canan

**ALGETEC**  
ENGENHARIA E CONSTRUÇÃO

**ALGETEC ENGENHARIA E CONSTRUÇÃO**  
Rua João Pessoa, 880 - sl B - Santa Terezinha  
Pato Branco/PR  
46.99102-2782  
www.algetec.eng.br

PROJETO ESTRUTURAL

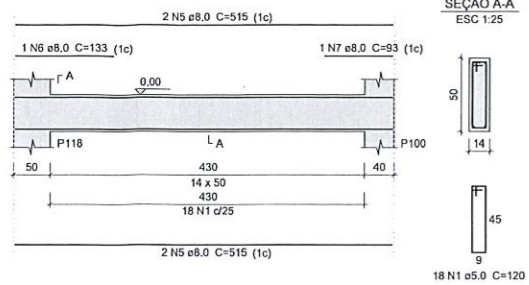
Resp. Técnico	Eng. Civil Daniel Parciarello, CREA: 072040/D	Proprietário	Município de Pato Branco - PR
Encl.	Rua Jacirelá Pato Branco/PR	Data	12/07/2021
Obra	Teatro Municipal Naura Rigon	Escala	Indicada
Referência	Pavimento: Térreo Vigas 4		

45

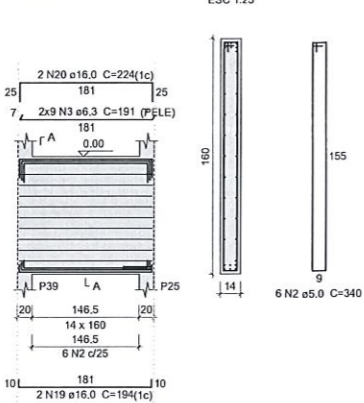
93



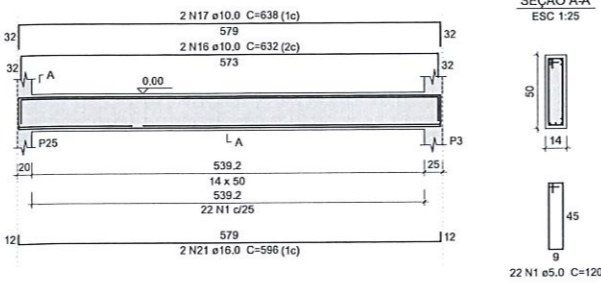
**V43**  
ESC 1:50



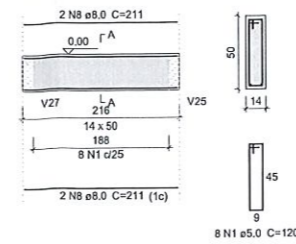
**V44**  
ESC 1:50



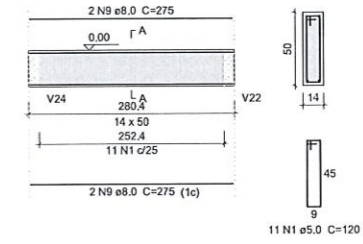
**V45**  
ESC 1:50



**V46**  
ESC 1:50



**V47**  
ESC 1:50



Relação do aço

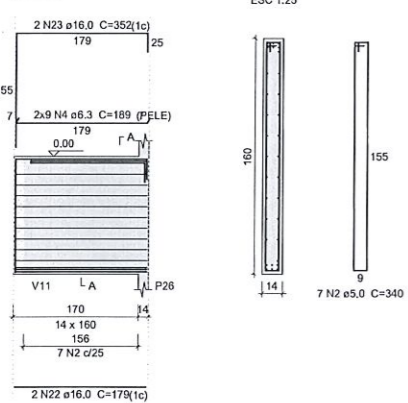
AÇO	N	DIAM (mm)	QUANT	C.UNIT (cm)	C.TOTAL (cm)
CA60	1	5.0	201	120	24120
	2	5.0	13	340	4420
CA50	3	6.3	18	191	3438
	4	6.3	18	189	3402
	5	8.0	4	515	2060
	6	8.0	1	133	133
	7	8.0	1	93	93
	8	8.0	4	211	844
	9	8.0	4	275	1100
	10	8.0	2	187	374
	11	8.0	1	115	115
	12	8.0	2	222	444
	13	8.0	3	299	897
	14	8.0	1	344	344
	15	8.0	2	748	1496
	16	10.0	2	632	1264
	17	10.0	2	638	1276
	18	10.0	1	638	638
	19	16.0	2	194	388
	20	16.0	2	224	448
	21	16.0	2	596	1192
	22	16.0	2	179	358
	23	16.0	2	352	704
	24	16.0	2	941	1882
	25	16.0	2	883	1766
	26	16.0	2	752	1504
	27	16.0	2	781	1562
	28	16.0	2	1200	2400
	29	16.0	2	354	708
	30	16.0	1	330	330
	31	16.0	2	773	1546
	32	20.0	2	425	850

Resumo do aço

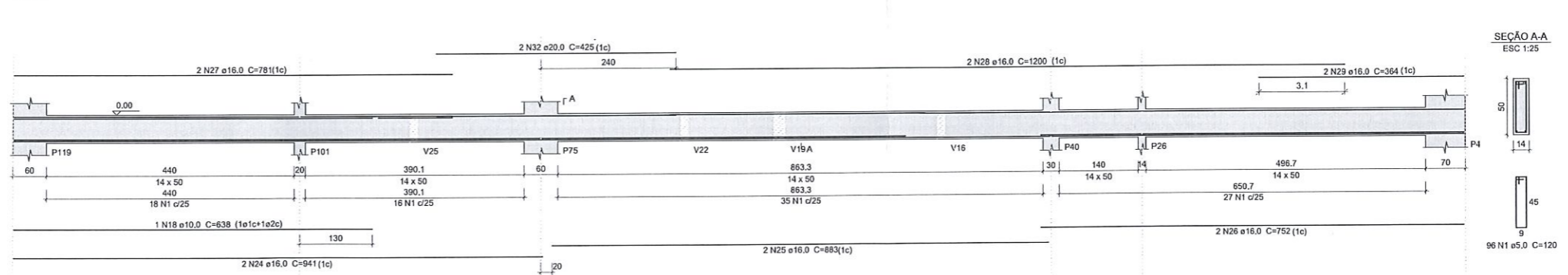
AÇO	DIAM (mm)	C.TOTAL (m)	PESO + 10 % (kg)
CA50	6.3	68.4	18.4
	8.0	79	34.3
	10.0	31.8	21.6
	16.0	148.1	257.1
	20.0	8.5	23.1
CA60	5.0	265.4	48.4
PESO TOTAL (kg)			
CA50		354.4	
CA60		48.4	

Volume de concreto (C-30) = 4.4 m³  
Área de formas = 70.58 m²

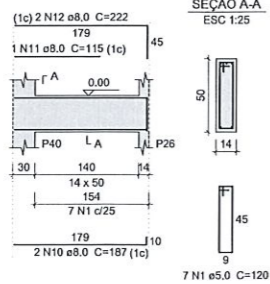
**V48**  
ESC 1:50



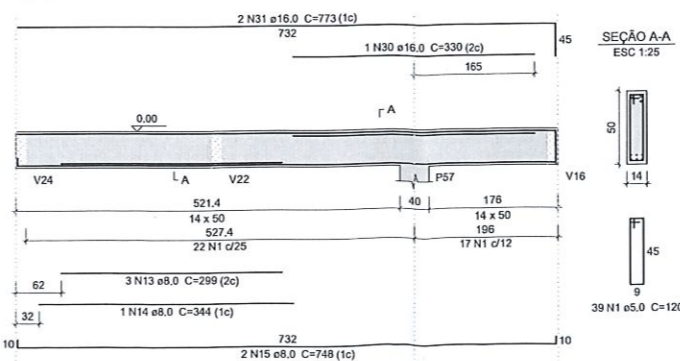
**V49**  
ESC 1:50



**V50**  
ESC 1:50



**V51**  
ESC 1:50



**ALGETEC**  
ENGENHARIA E CONSTRUÇÃO

**ALGETEC ENGENHARIA E CONSTRUÇÃO**  
Rua João Pessoa, 880 - sl B - Santa Terezinha  
Pato Branco/PR  
46. 99102-2782  
www.algetec.eng.br

PROJETO ESTRUTURAL

Projeto: **Térreo**

Projeto: **Eng. Civil Daniel Parcianello, CREA: 072040/D**  
**Eng. Civil André Mateus Canan, CREA: 193875/D**  
**Eng. Civil Loriane C. Parcianello, CREA: 172355/D**

Local: **Município de Pato Branco - PR**

End: **Rua Jaciretã**  
**Pato Branco/PR**

Objeto: **Teatro Municipal Naura Rigon**

Referência: **Pavimento: Térreo**  
**Vigas 5**

Data: **12/07/2021**

Escala: **Indicada**

46

93

Relação do aço

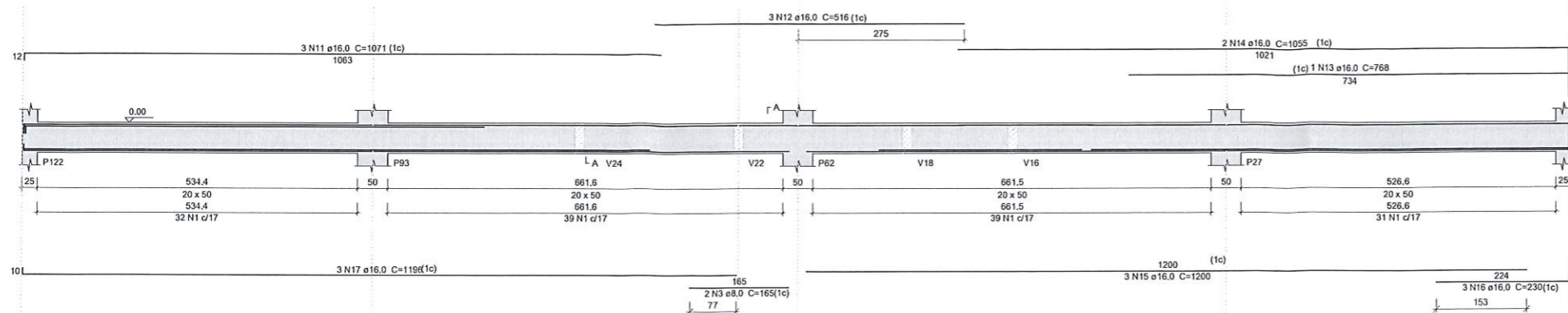
ACO	N	DIAM (mm)	QUANT	C.UNIT (cm)	C.TOTAL (cm)
CA60	1	5.0	141	132	18612
CA60	2	5.0	523	102	53346
CA50	3	8.0	2	165	330
CA50	4	8.0	3	1131	3393
CA50	5	10.0	12	1200	14400
CA50	6	10.0	4	268	1072
CA50	7	10.0	2	617	1234
CA50	8	10.0	1	634	634
CA50	9	10.0	1	654	654
CA50	10	10.0	2	258	516
CA50	11	16.0	3	1071	3213
CA50	12	16.0	3	516	1548
CA50	13	16.0	1	768	768
CA50	14	16.0	2	1055	2110
CA50	15	16.0	11	1200	13200
CA50	16	16.0	3	230	690
CA50	17	16.0	3	1196	3588
CA50	18	16.0	2	959	1918
CA50	19	16.0	2	1109	2218
CA50	20	16.0	2	595	1190
CA50	21	16.0	2	1196	2392
CA50	22	16.0	2	422	844
CA50	23	16.0	3	440	1320
CA50	24	16.0	2	585	1170
CA50	25	16.0	2	928	1856

Resumo do aço

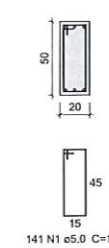
ACO	DIAM (mm)	C.TOTAL (m)	PESO + 10 % (kg)
CA50	8.0	37.3	16.2
CA50	10.0	185.1	125.5
CA50	16.0	380.3	660.2
CA60	5.0	719.6	122
PESO TOTAL (kg)			
CA50	801.9		
CA60	122		

Volume de concreto (C-30) = 8.32 m³  
Área de forma = 96.05 m²

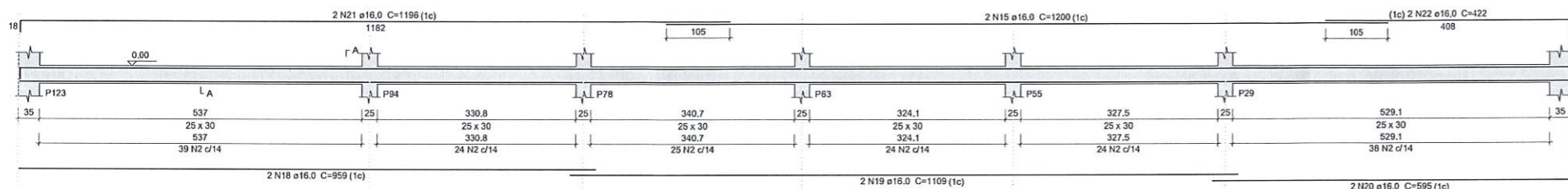
V52  
ESC 1:50



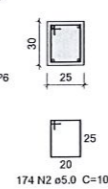
SEÇÃO A-A  
ESC 1:25



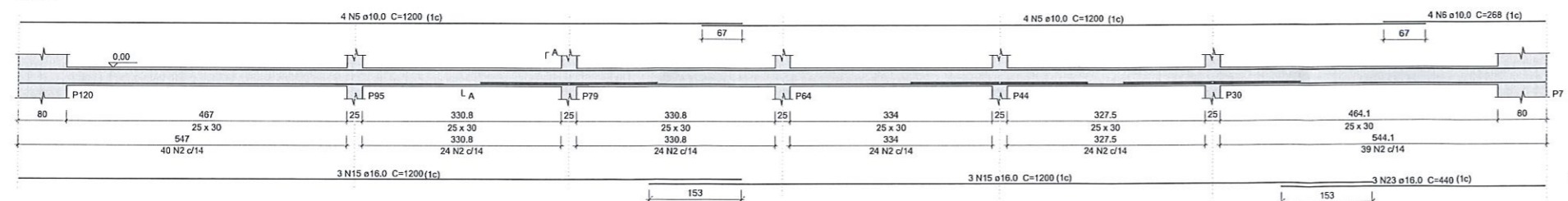
V53  
ESC 1:50



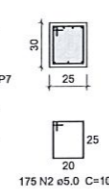
SEÇÃO A-A  
ESC 1:25



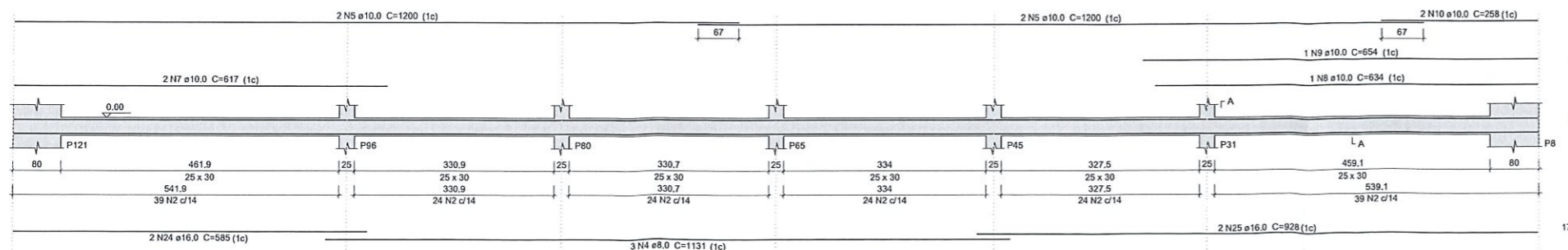
V54  
ESC 1:50



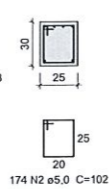
SEÇÃO A-A  
ESC 1:25



V55  
ESC 1:50



SEÇÃO A-A  
ESC 1:25



**ALGETEC**  
ENGENHARIA E CONSTRUÇÃO

**ALGETEC ENGENHARIA E CONSTRUÇÃO**  
Rua João Pessoa, 880 - sl B - Santa Terezinha  
Pato Branco/PR  
Fone: 99102 2782  
www.algetec.eng.br

PROJETO ESTRUTURAL

Resp. Técnica	Eng. Civil Daniel Barceleno, CREA: 072040/D Eng. Civil André Mateus Canan, CREA: 193875/D Eng. Civil Loriane C. Parcianello, CREA: 172355/D	Município de Pato Branco - PR
Emp.	Rua Jacirelá Pato Branco/PR	Data: 12/07/2021
Obra	Teatro Municipal Naura Rigon	Local: Indicada
Referência	Pavimento: Térreo Vigas 6	