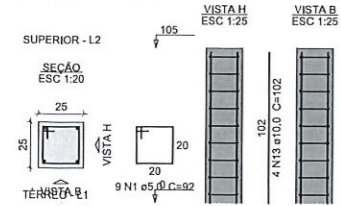
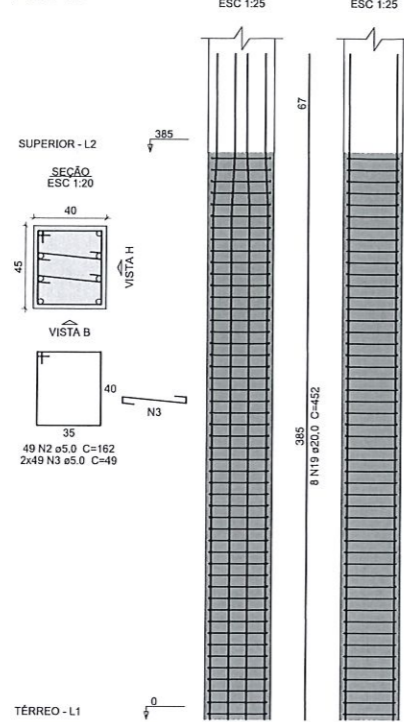


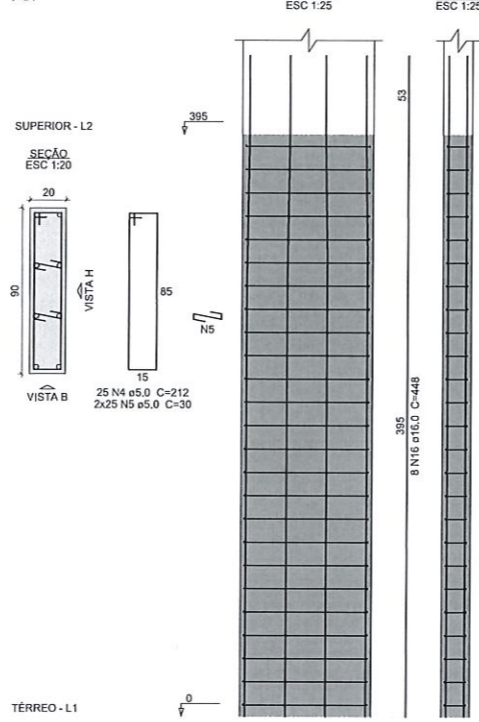
P32=P46=P66=P81



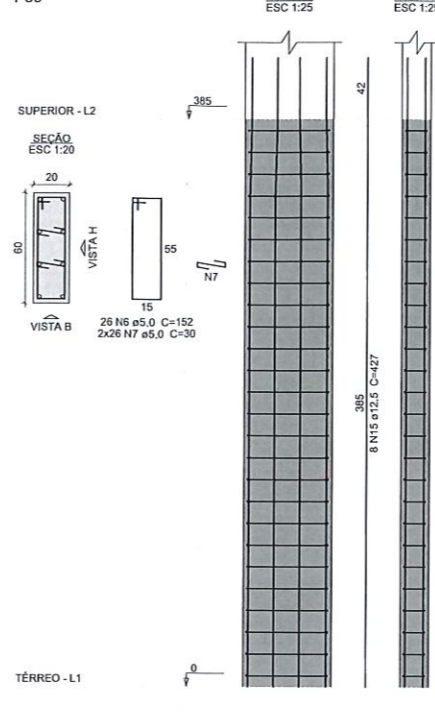
P35=P92



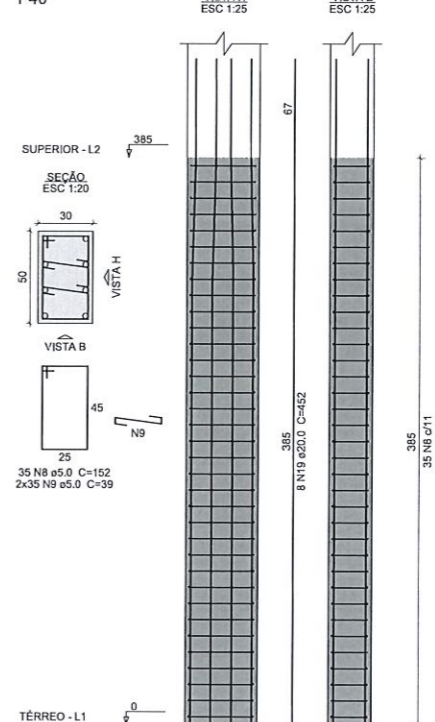
P37



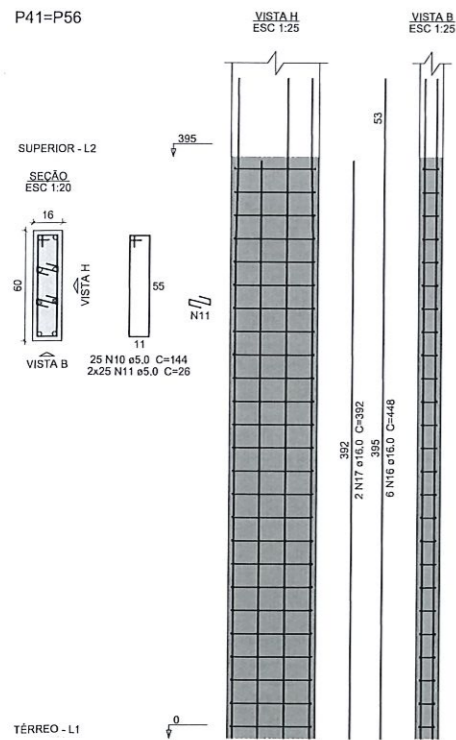
P39



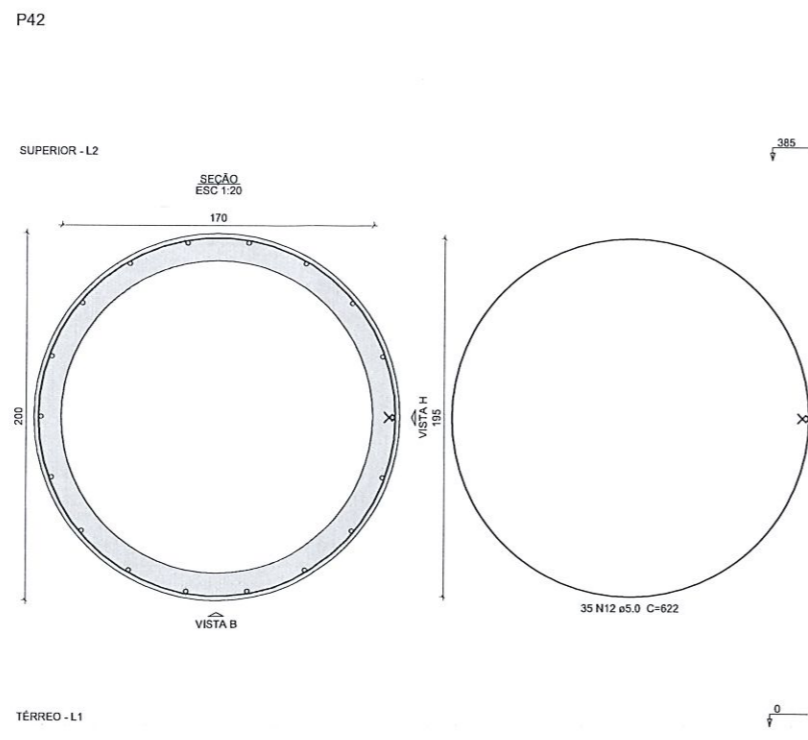
P40



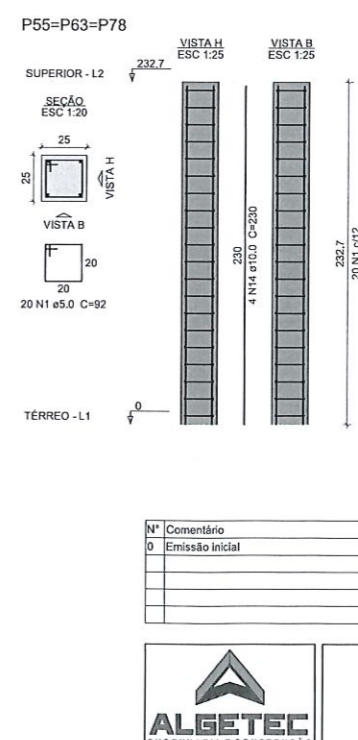
P41=P56



P42



P55=P63=P78



Relação do aço

AÇO	N	DIAM (mm)	QUANT	P37	
				C.UNIT (cm)	C.TOTAL (cm)
CA60	1	5.0	96	92	8832
	2	5.0	98	162	15876
	3	5.0	196	49	9604
	4	5.0	25	212	5300
	5	5.0	50	30	1500
	6	5.0	26	152	3952
	7	5.0	52	30	1560
	8	5.0	35	152	5320
	9	5.0	70	39	2730
	10	5.0	50	144	7200
	11	5.0	100	26	2600
	12	5.0	35	622	21770
	13	10.0	16	102	1632
	14	10.0	12	230	2760
	15	12.5	8	427	3416
	16	16.0	20	448	8960
	17	16.0	4	392	1568
	18	16.0	18	438	7884
	19	20.0	24	452	10848

Resumo do aço

AÇO	DIAM (mm)	C.TOTAL (m)	PESO + 10% (kg)
CA50	10.0	44	29.8
	12.5	34.2	36.2
	16.0	184.2	319.7
	20.0	108.5	294.3
CA60	5.0	862.5	146.2

PESO TOTAL (kg)

CA50	679.9
CA60	146.2

Volume de concreto (C-30) = 7.95 m³
Área de forma = 81.49 m²

Nº	Comentário	Data	Autor
0	Emissão Inicial		

ALGETEC ENGENHARIA E CONSTRUÇÃO
Rua João Pessoa, 880 - sl B - Santa Terezinha
Pato Branco/PR
46. 99102 2782
www.algetec.eng.br

PROJETO ESTRUTURAL

Resp. Técnico: Eng. Civil Daniel Padellaro, CREA: 072040/D
Eng. Civil Antônio Mateus Canav, CREA: 193875/D
Eng. Civil Loriane C. Parciachello, CREA: 172355/D

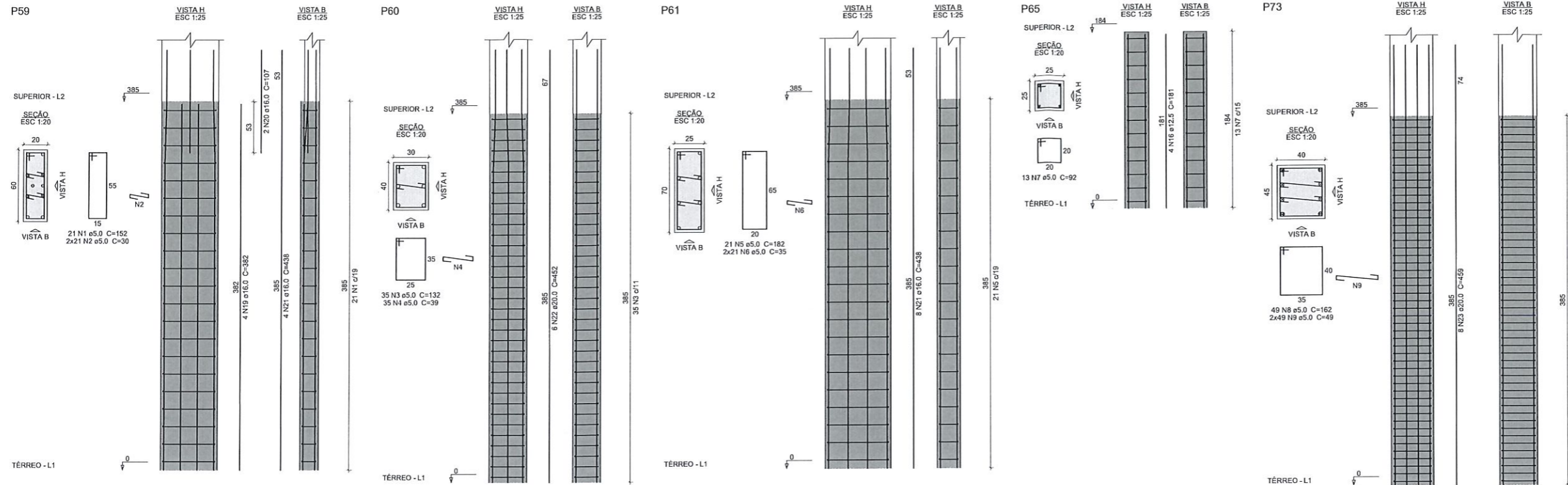
Proprietário: Município de Pato Branco

Rua Jacirelá
Pato Branco/PR
Data: 12/07/2021

Teatro Municipal Naura Rigon
Localidade: Indcada

Referência: Pavimento Superior
Pilares 3

26
93



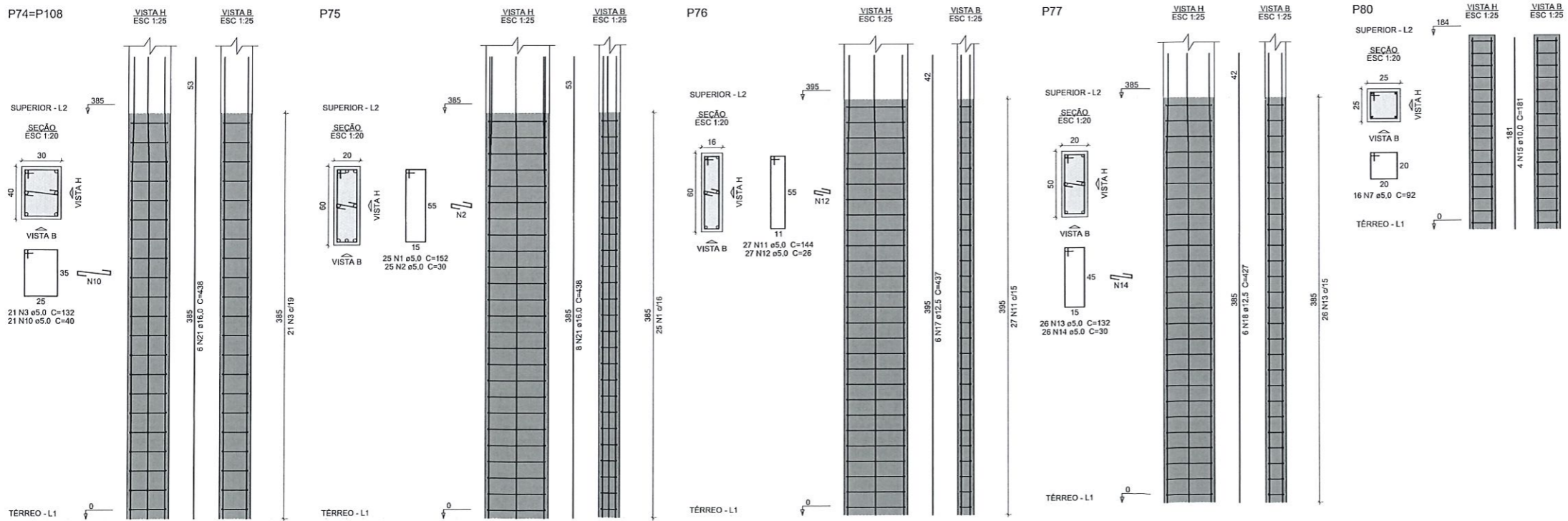
Relação do aço

ACO	N	DIAM (mm)	QUANT	C.UNIT (cm)	C.TOTAL (cm)
CA60	1	5.0	46	152	6992
	2	5.0	67	30	2010
	3	5.0	77	132	10164
	4	5.0	35	39	1365
	5	5.0	21	182	3822
	6	5.0	42	35	1470
	7	5.0	29	92	2668
	8	5.0	49	162	7938
	9	5.0	98	49	4802
	10	5.0	42	40	1680
	11	5.0	27	144	3888
	12	5.0	27	26	702
	13	5.0	26	132	3432
	14	5.0	26	30	780
	15	10.0	4	181	724
	16	12.5	4	181	724
	17	12.5	6	437	2622
	18	12.5	6	427	2562
	19	16.0	4	382	1528
	20	16.0	2	107	214
	21	16.0	32	438	14016
	22	20.0	6	452	2712
	23	20.0	8	459	3672

Resumo do aço

ACO	DIAM (mm)	C.TOTAL (m)	PESO + 10% (kg)
CA50	10.0	7.3	4.9
	12.5	59.1	62.6
	16.0	157.6	273.6
	20.0	63.9	173.2
CA60	5.0	517.2	87.7
PESO TOTAL (kg)			
CA50		514.3	
CA60		87.7	

Volume de concreto (C-30) = 4,67 m³
Área de forma = 57,42 m²



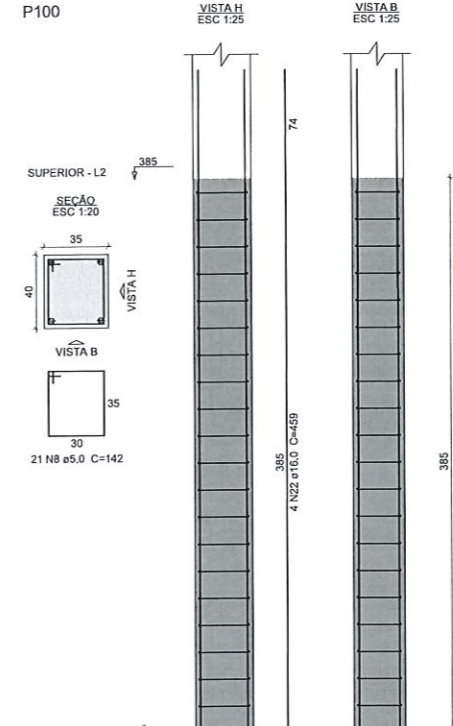
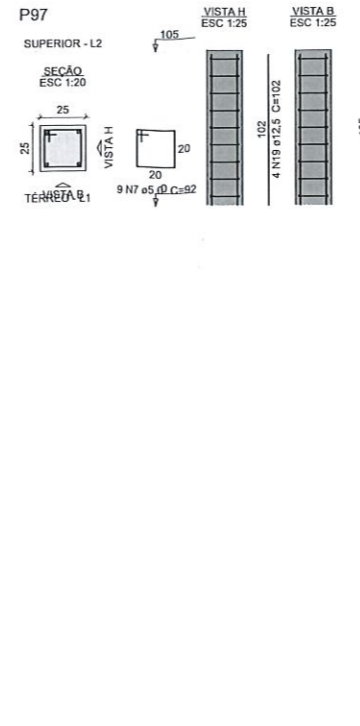
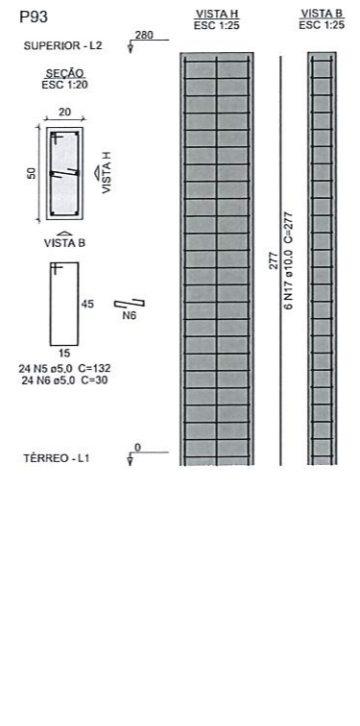
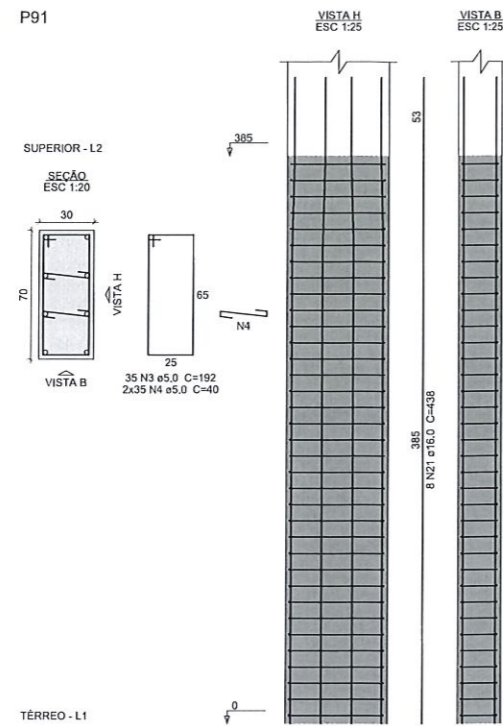
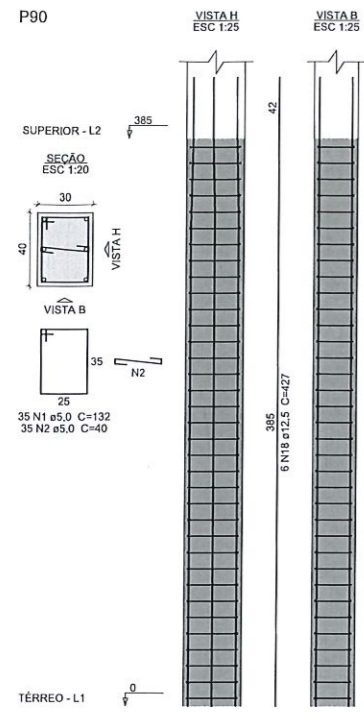
Nº	Comentário	Data	Autor
0	Emissão inicial		

ALGETEC
ENGENHARIA E CONSTRUÇÃO

ALGETEC ENGENHARIA E CONSTRUÇÃO
Rua João Pessoa, 880 - sl B - Santa Terezinha
Pato Branco/PR
46. 99102 2782
www.algetec.eng.br

PROJETO ESTRUTURAL

Resp. Técnico	Eng. Civil Daniel Pariziano, CREA: 072040/D Eng. Civil André Mateus Canan, CREA: 193875/D Eng. Civil Loriane C. Farciello, CREA: 172355/D	Proprietário	Município de Pato Branco
En1	Rua Jacirelá Pato Branco/PR	Data	12/07/2021
Com	Teatro Municipal Naura Rigon	Escala	Indicada
Referência	Pavimento: Superior Pilares 4		



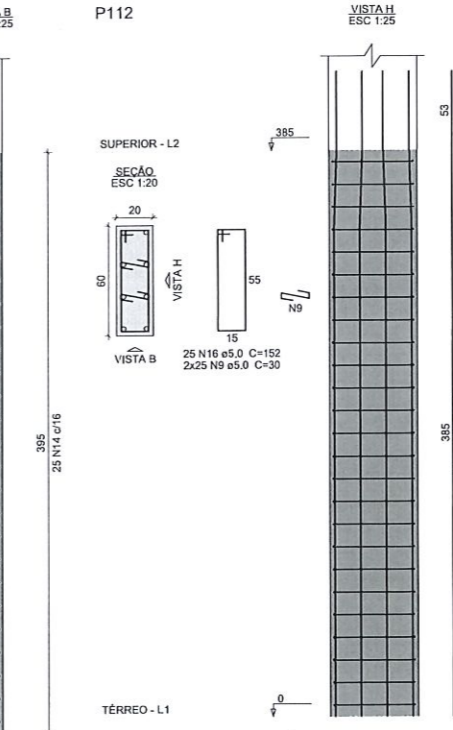
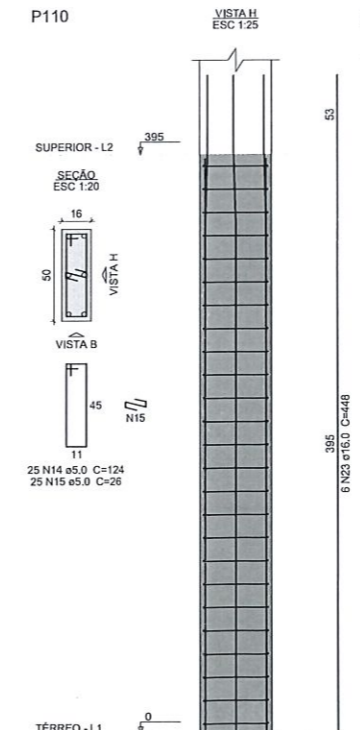
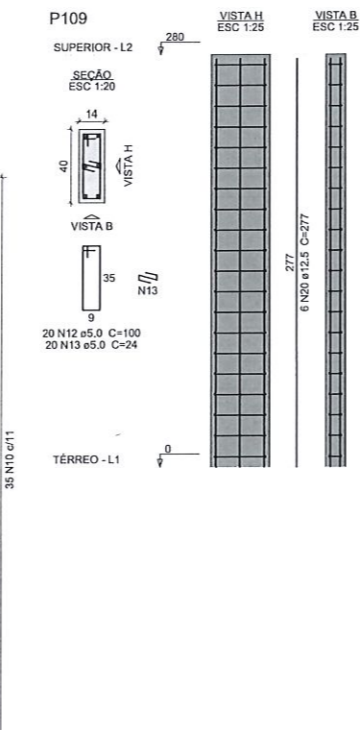
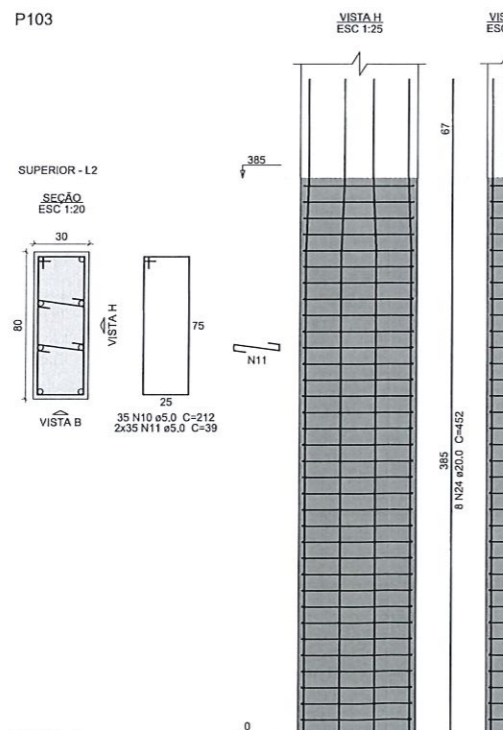
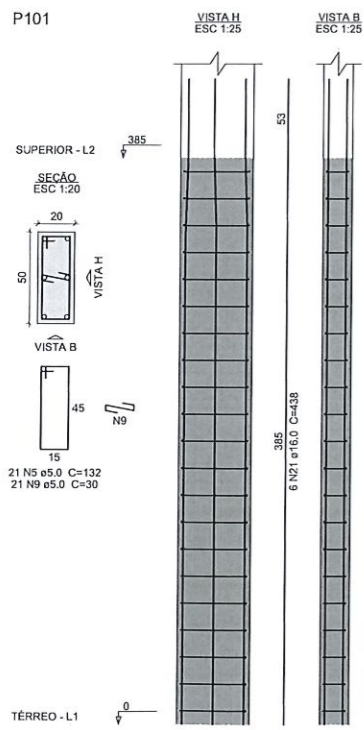
Relação do aço

CAÇO	N	DIAM (mm)	QUANT	C.UNIT (cm)	C.TOTAL (cm)
CA60	1	5.0	35	132	4620
	2	5.0	35	40	1400
	3	5.0	35	192	6720
	4	5.0	70	40	2800
	5	5.0	45	132	5940
	6	5.0	24	30	720
	7	5.0	9	92	828
	8	5.0	21	142	2982
	9	5.0	71	30	2130
	10	5.0	35	212	7420
	11	5.0	70	39	2730
	12	5.0	20	100	2000
	13	5.0	20	24	480
	14	5.0	25	124	3100
	15	5.0	25	26	650
	16	5.0	25	152	3800
CA50	17	10.0	6	277	1662
	18	12.5	6	427	2562
	19	12.5	4	102	408
	20	12.5	6	277	1662
	21	15.0	22	438	9636
	22	16.0	4	459	1836
	23	16.0	6	448	2688
	24	20.0	8	452	3616

Resumo do aço

CAÇO	DIAM (mm)	C.TOTAL (m)	PESO + 10% (kg)
CA50	10.0	16.7	11.3
	12.5	46.4	49.1
	15.0	141.6	245.8
CA60	20.0	36.2	98.1
	5.0	483.2	81.9
PESO TOTAL (kg)			
CA50			404.3
CA60			81.9

Volume de concreto (C-30) = 4.4 m³
Área de forma = 52.09 m²



Nº	Comentário	Data	Autor
0	Emissão inicial		

ALGETEC ENGENHARIA E CONSTRUÇÃO
Rua João Pessoa, 880 - sl B - Santa Terezinha
Palo Branco/PR
46. 99102 2782
www.algetec.eng.br

PROJETO ESTRUTURAL

Proprietário: Município de Palo Branco

Resp. Técnico: Eng. Civil Daniel Pavanetto, CREA: 072040/D
Eng. Civil André Mateus Canan, CREA: 193875/D
Eng. Civil Loriane C. Picanello, CREA: 172355/D

End.: Rua Jaciêta, Palo Branco/PR
Obra: Teatro Municipal Naura Rigon
Referência: Pavimento: Superior, Pilares 5

Data: 12/07/2021
Escala: Indicada

28
93

Relação do aço

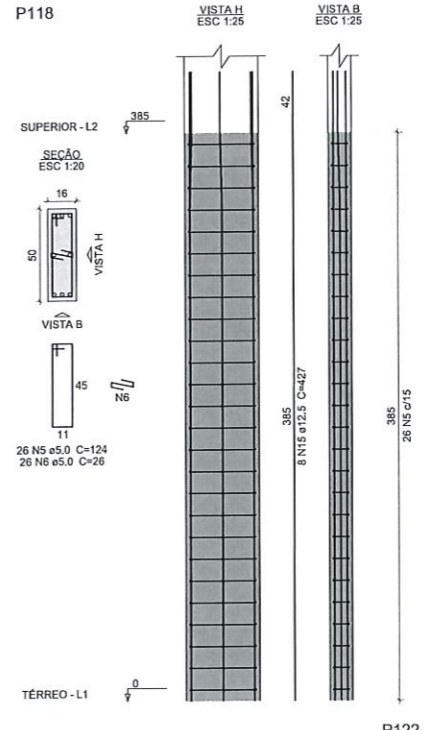
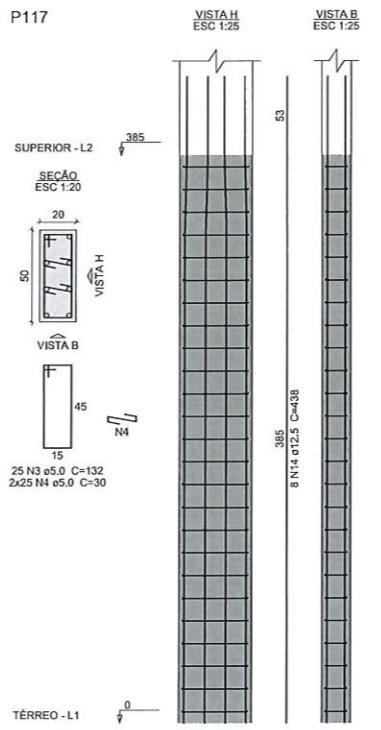
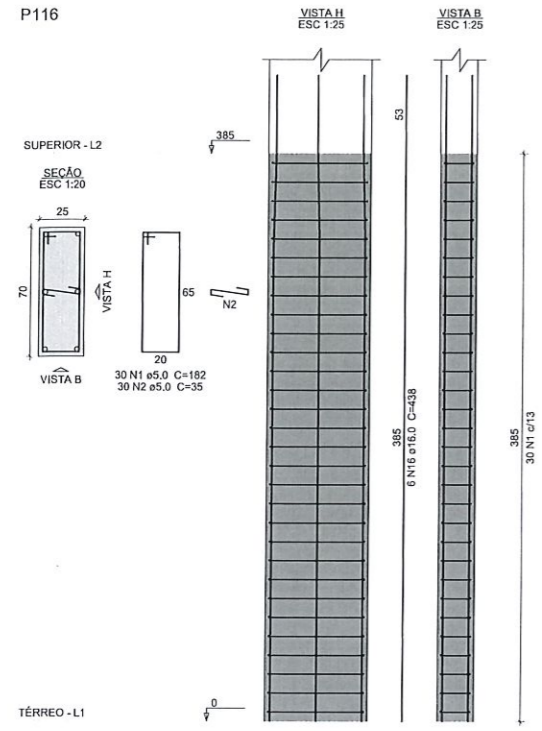
P116 P117 P118
P119 P120 P121
P122

ACO	N	DIAM (mm)	QUANT	C.UNIT (cm)	C.TOTAL (cm)
CA60	1	5.0	30	182	5460
	2	5.0	30	35	1050
	3	5.0	25	132	3300
	4	5.0	75	30	2250
	5	5.0	26	124	3224
	6	5.0	26	26	676
	7	5.0	25	152	3800
	8	5.0	30	252	7560
	9	5.0	90	30	2700
CA50	10	6.3	43	242	10406
	11	6.3	86	33	2838
	12	6.3	20	182	3640
	13	6.3	40	38	1520
	14	12.5	8	438	3504
	15	12.5	20	427	8540
	16	16.0	6	438	2628
	17	16.0	6	452	2712
	18	16.0	6	459	2754
	19	20.0	6	452	2712

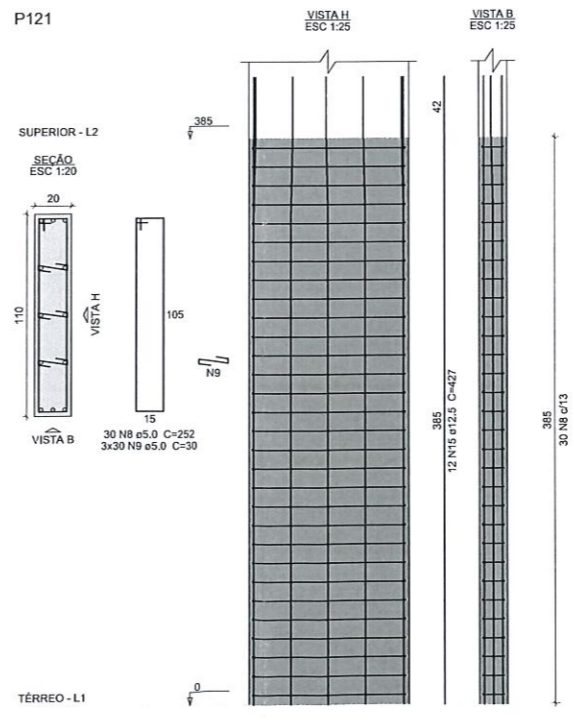
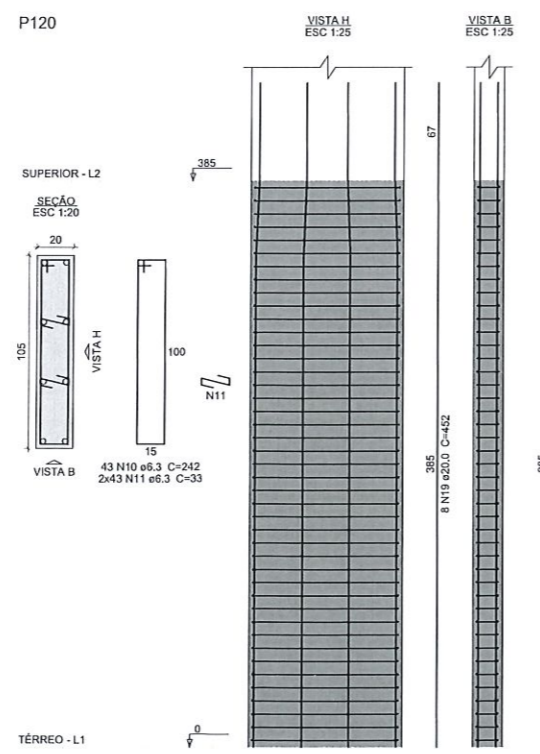
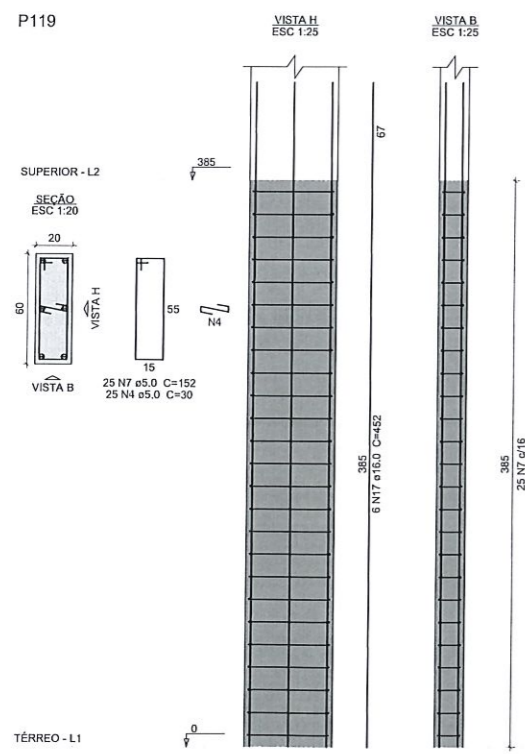
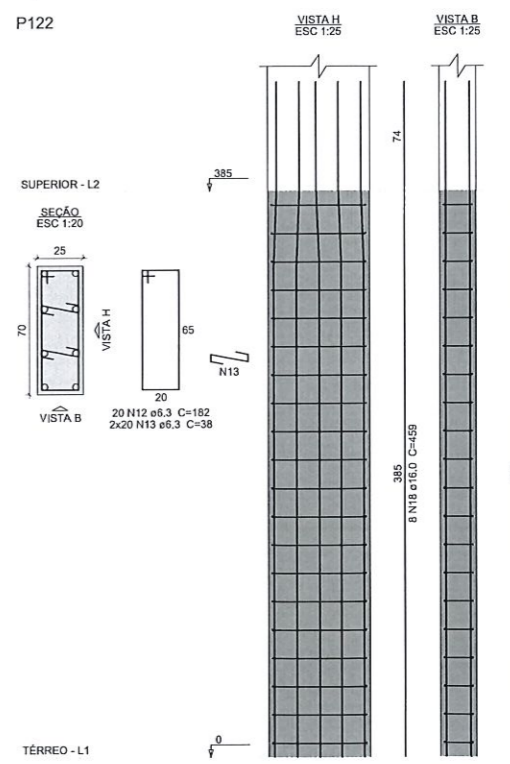
Resumo do aço

ACO	DIAM (mm)	C.TOTAL (m)	PESO + 10% (kg)
CA50	6.3	184.1	49.5
	12.5	120.5	127.6
	16.0	90.2	156.5
CA60	20.0	36.2	98.1
	5.0	300.2	50.9
PESO TOTAL (kg)			
CA50		431.7	
CA60		50.9	

Volume de concreto (C-30) = 4.16 m³
Área de forma = 50.9 m²



P122



Nº	Comentário	Data	Autor
0	Emissão Inicial		

ALGETEC
ENGENHARIA E CONSTRUÇÃO

ALGETEC ENGENHARIA E CONSTRUÇÃO
Rua João Pessoa, 880 - sl B - Santa Terezinha
Pato Branco/PR
46-09102-2782
www.algetec.eng.br

PROJETO ESTRUTURAL

Resp. Técnico: Eng. Civil Danilo Paçolatto, CREA: 072040/D
Eng. Civil André Mateus Canham, CREA: 193875/D
Eng. Civil Loriane C. Parcianello, CREA: 172355/D

Proprietário: Município de Pato Branco

End: Rua Jacirêta, Pato Branco/PR
Data: 12/07/2021

Obra: Teatro Municipal Naura Rigon
Escala: Indicada

Referência: Pavimento: Superior
Pilares 6

29
93

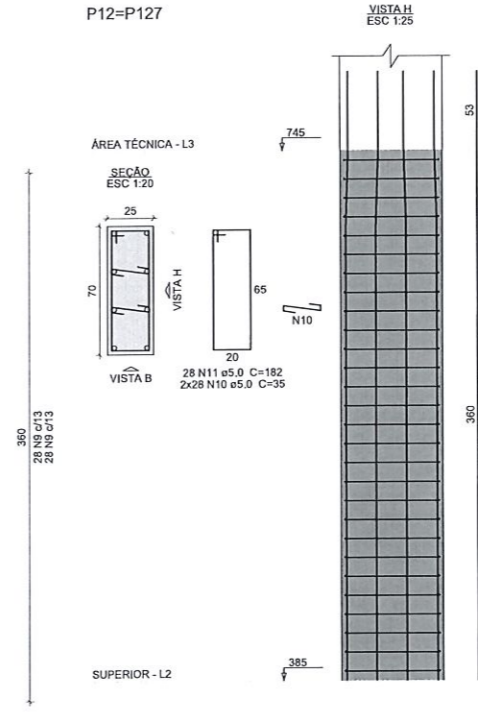
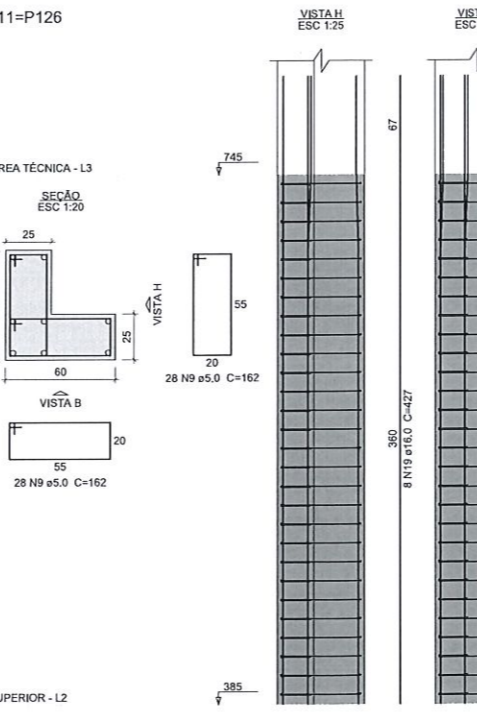
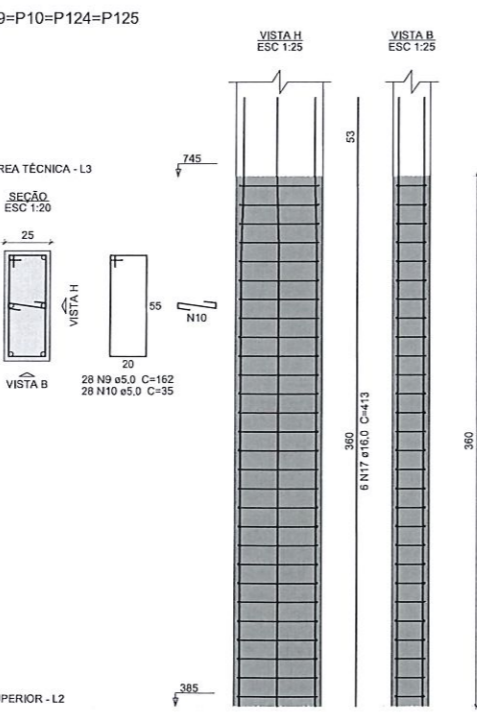
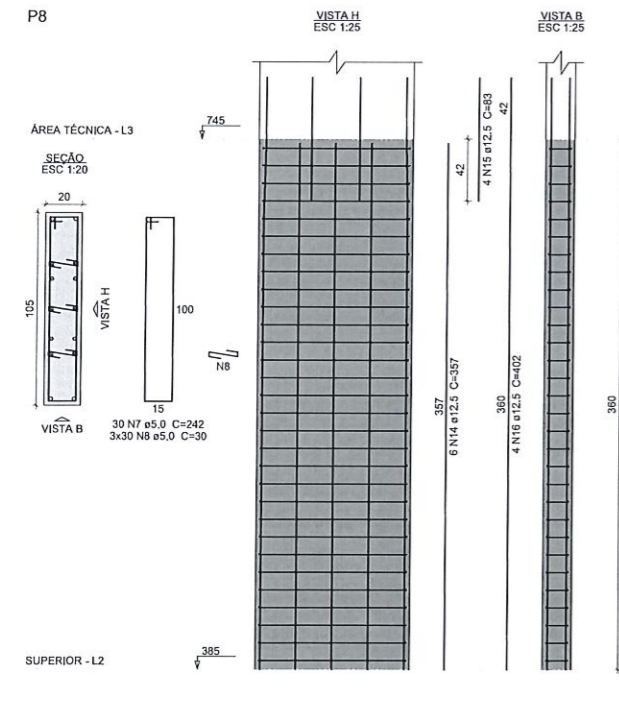
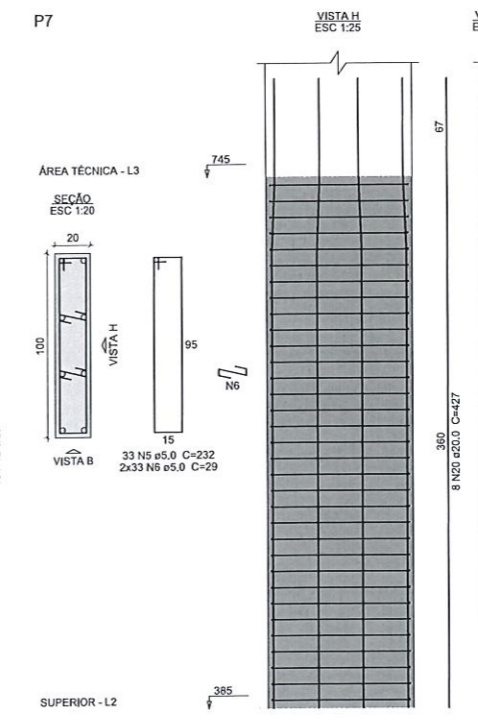
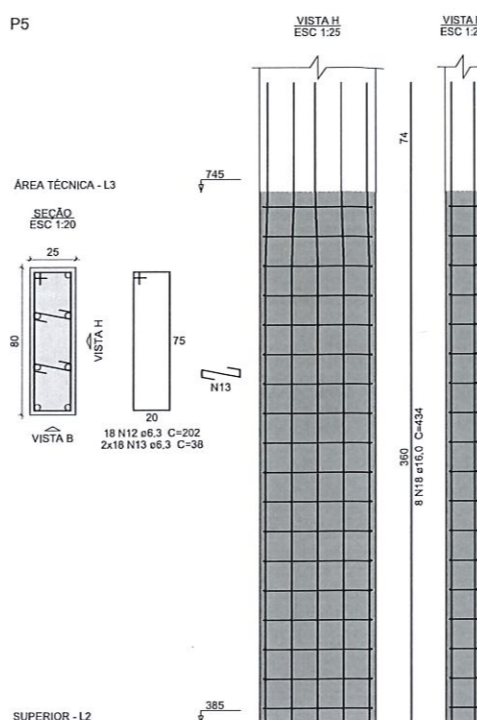
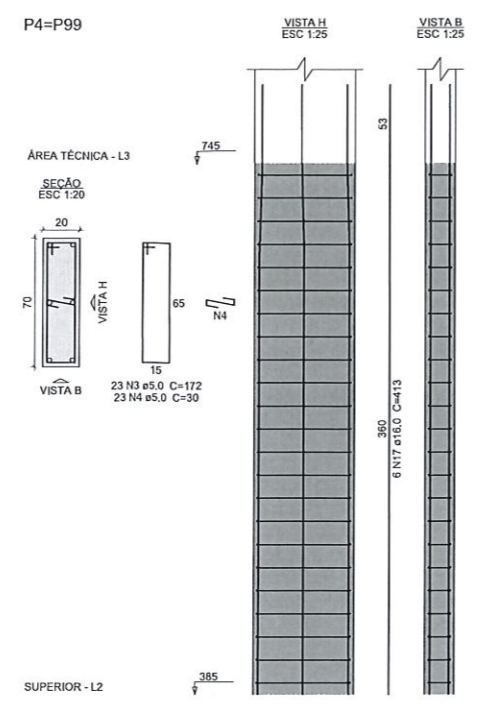
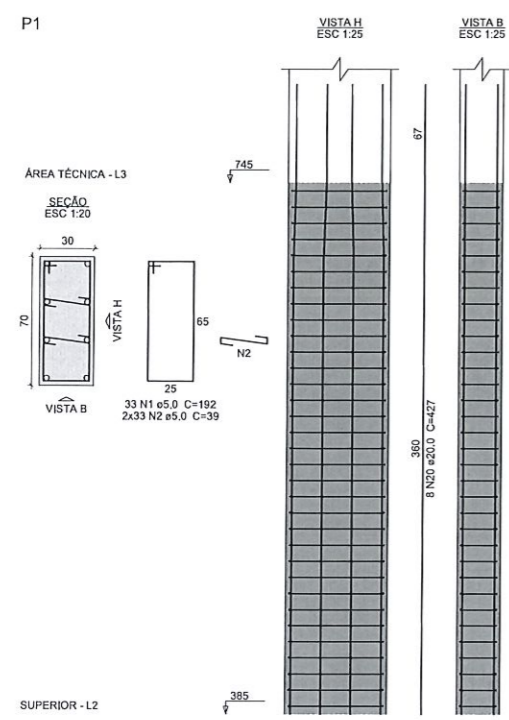
Relação do aço

AÇO	N	DIAM (mm)	QUANT	C.UNIT (cm)	C.TOTAL (cm)	P1		P5	
						2xP4	P8	2xP11	4xP9
CA60	1	5.0	33	192	6336				
	2	5.0	56	39	2574				
	3	5.0	46	172	7912				
	4	5.0	46	30	1380				
	5	5.0	33	232	7656				
	6	5.0	66	29	1914				
	7	5.0	39	242	7260				
	8	5.0	99	39	2700				
	9	5.0	224	162	36288				
	10	5.0	224	35	7840				
	11	5.0	56	182	10192				
	12	6.3	18	202	3636				
	13	6.3	36	38	1368				
	14	12.5	6	357	2142				
	15	12.5	4	83	332				
	16	12.5	4	402	1608				
	17	16.0	52	413	21476				
	18	16.0	8	434	3472				
	19	16.0	16	427	6832				
	20	20.0	16	427	6832				


Resumo do aço

AÇO	DIAM (mm)	C.TOTAL (m)	PESO + 10 % (kg)
CA50	6.3	50.1	13.5
	12.5	40.9	43.3
	16.0	317.8	551.8
	20.0	66.4	165.3
CA60	5.0	920.6	156.1
PESO TOTAL (kg)			
CA50			793.8
CA60			156.1

Volume de concreto (C-30) = 9.09 m³
 Área de forma = 100.8 m²



Nº	Comentário	Data	Autor
0	Emissão inicial		



ALGETEC
ENGENHARIA E CONSTRUÇÃO

ALGETEC ENGENHARIA E CONSTRUÇÃO
 Rua João Pessoa, 880 - sl B - Santa Terezinha
 Pato Branco/PR
 46.99102-2762
 www.algetec.eng.br

PROJETO ESTRUTURAL

Resp. Técnico: Eng. Civil Daniel Parcianelo, CREA: 072040/D
 Eng. Civil André Mateus Canan, CREA: 193875/D
 Eng. Civil Loriane C. Parcianelo, CREA: 172355/D

Município de Pato Branco

Rua Jaciethá Pato Branco/PR

Teatro Municipal Naura Rigon

Pavimento: Área Técnica
Pilares 1

12/07/2021

Indicada

30

93

Relação do aço

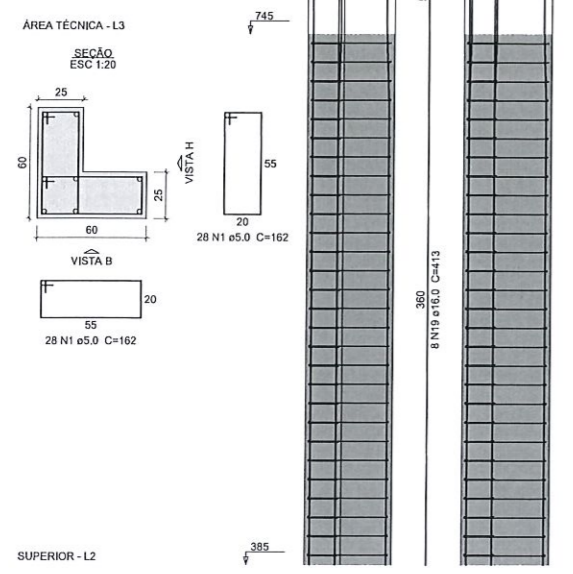
AÇO	N	DIAM (mm)	QUANT	C.TOTAL (cm)		C.TOTAL (cm)
				P13	P15	
CA60	1	5.0	140	162		22680
	2	5.0	70	152		10640
	3	5.0	92	30		2760
	4	5.0	10	144		1440
	5	5.0	10	28		280
	6	5.0	28	35		980
	7	5.0	33	212		6996
	8	5.0	33	89		2937
	9	5.0	33	39		1287
	10	5.0	38	300		10800
	11	5.0	216	24		5184
CA50	12	5.0	90	162		14580
	13	5.0	180	49		8820
	14	5.0	10	212		2120
	15	5.0	68	30		2040
	16	12.5	8	413		2478
	17	12.5	20	402		8040
	18	12.5	8	147		1176
	19	16.0	32	413		13216
	20	16.0	6	147		882
	21	20.0	24	427		10248

Resumo do aço

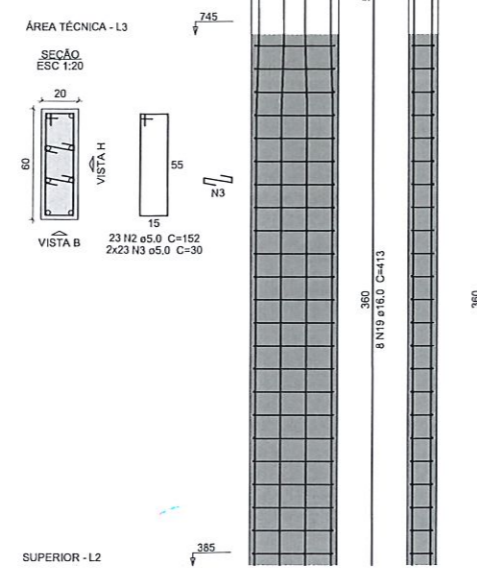
AÇO	DIAM (mm)	C.TOTAL (m)	PESO * 10 % (kg)
CA50	12.5	117	123.9
	16.0	141	244.8
	20.0	102.5	278
CA60	5.0	935.3	158.6
PESO TOTAL (kg)			
CA50			646.7
CA60			158.6

Volume de concreto (C-30) = 6.83 m³
 Área de forma = 77.51 m²

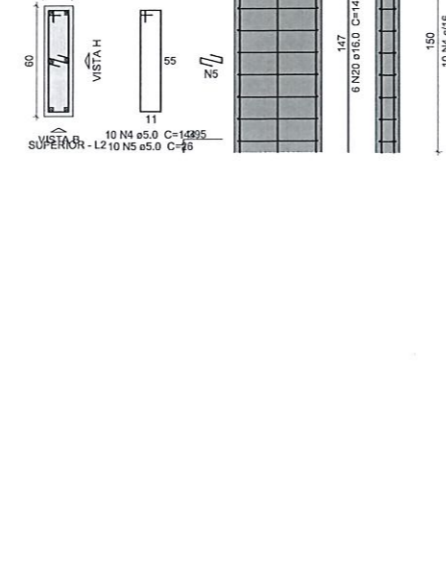
P13=P128



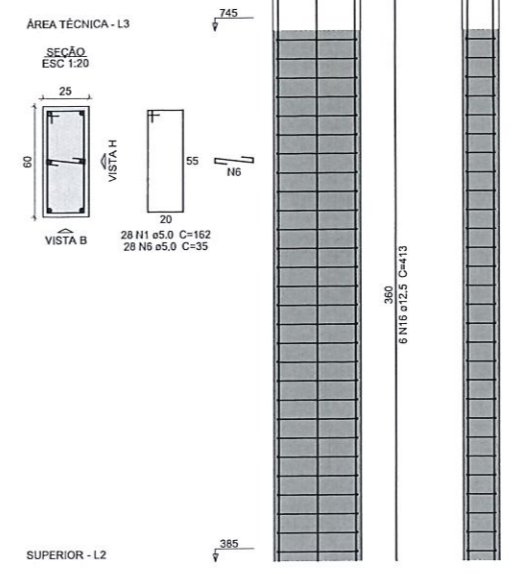
P15=P112



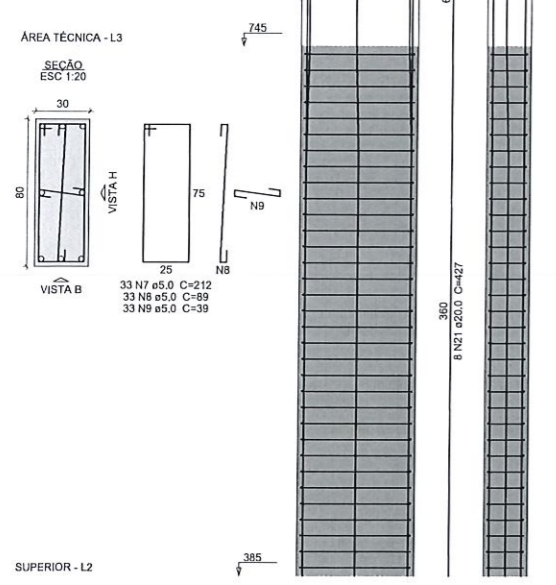
P16



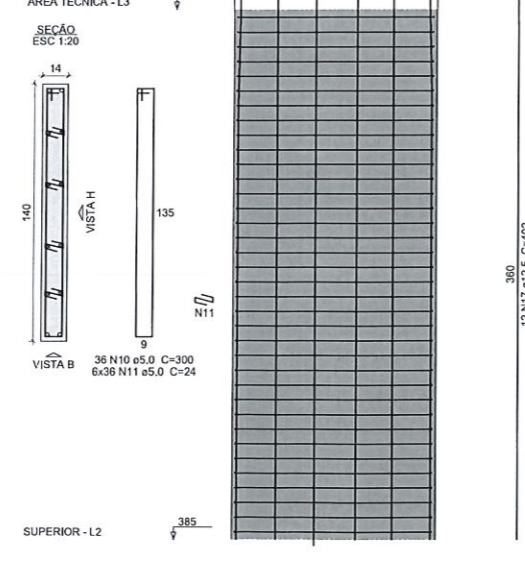
P19



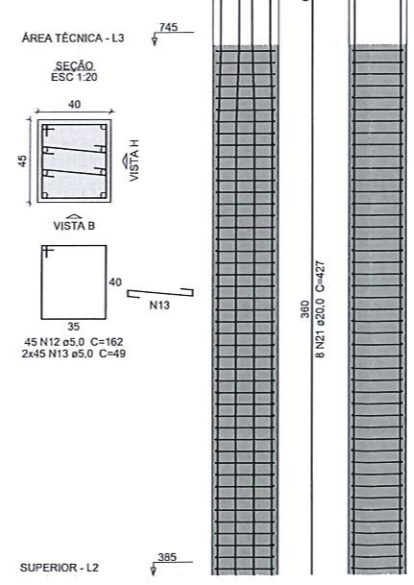
P21



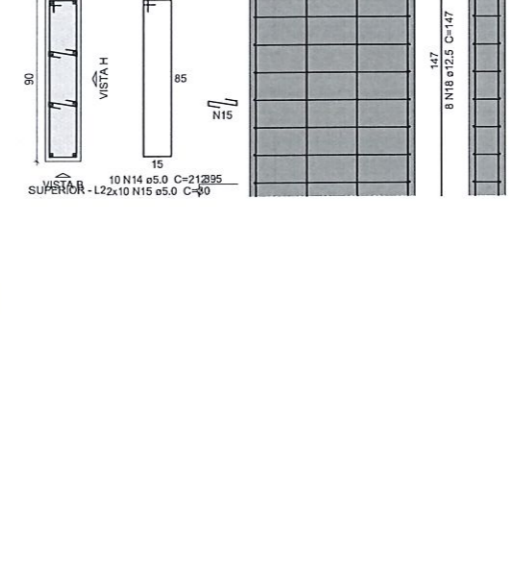
P26



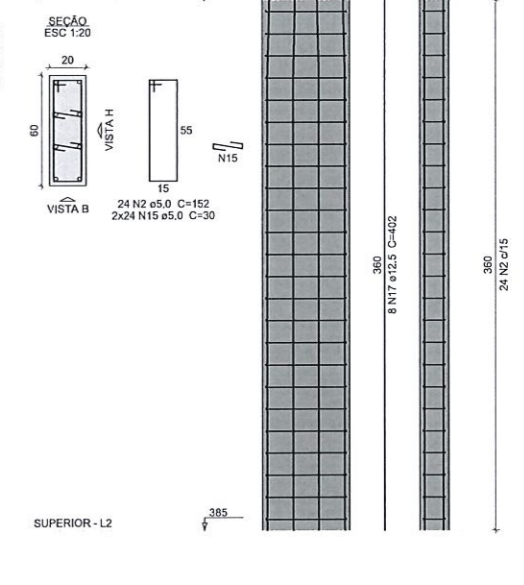
P35=P92



P37



P39



Nº	Comentário	Data	Autor
0	Emissão inicial		

ALGETEC
ENGENHARIA E CONSTRUÇÃO

ALGETEC ENGENHARIA E CONSTRUÇÃO
 Rua João Pessoa, 880 - sl B - Santa Terezinha
 Pato Branco/PR
 46. 99102 2782
 www.algetec.eng.br

PROJETO ESTRUTURAL

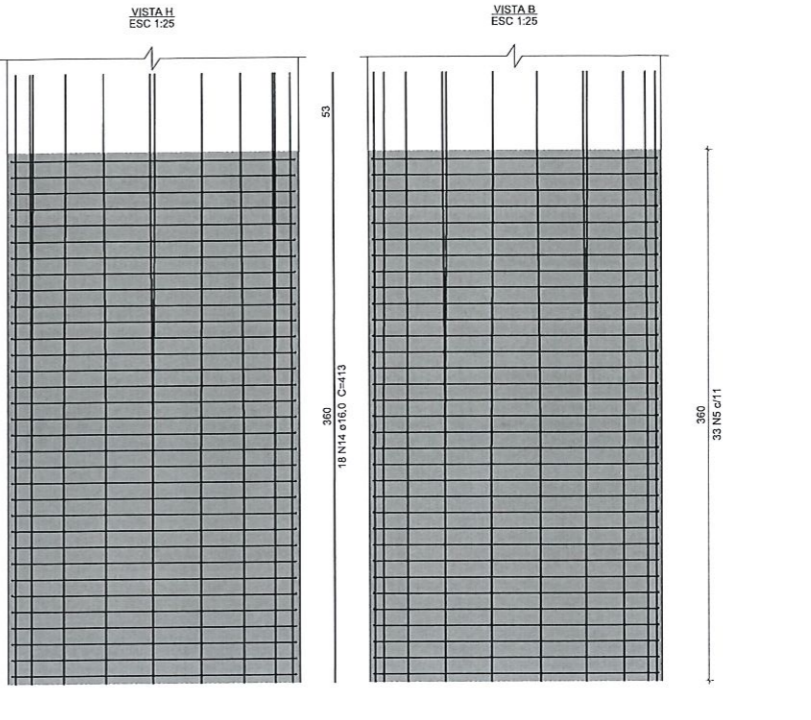
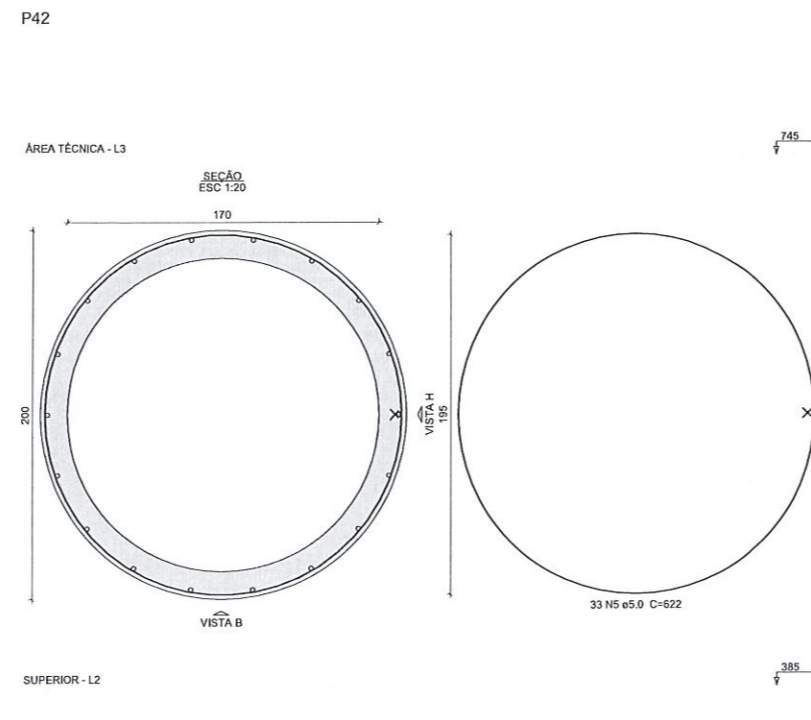
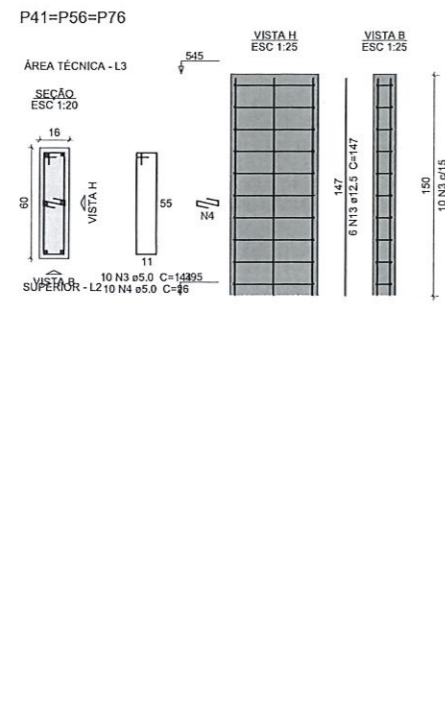
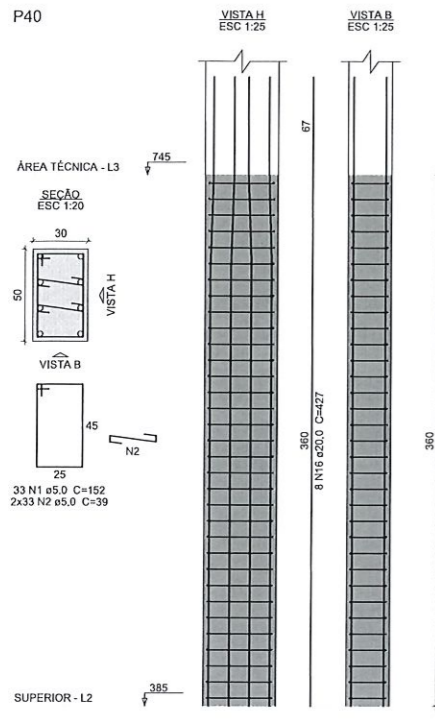
Proprietário: Município de Pato Branco - PR

Resp. Técnico: Eng. Civil Daniel Parcianello, CREA: 072040/D
 Eng. Civil André Mateus Canan, CREA: 193875/D
 Eng. Civil Lorlane C. Parcianello, CREA: 172355/D

End.: Rua Jacirelá, Pato Branco/PR
 Obra: Teatro Municipal Naura Rigon
 Referência: Pavimento: Área Técnica, Pilares 2

Data: 12/07/2021
 Escala: Indcada

31
93



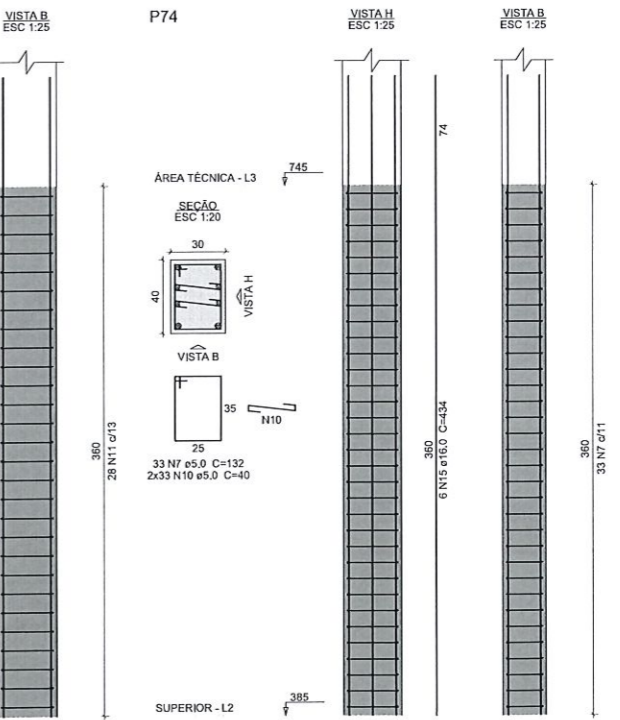
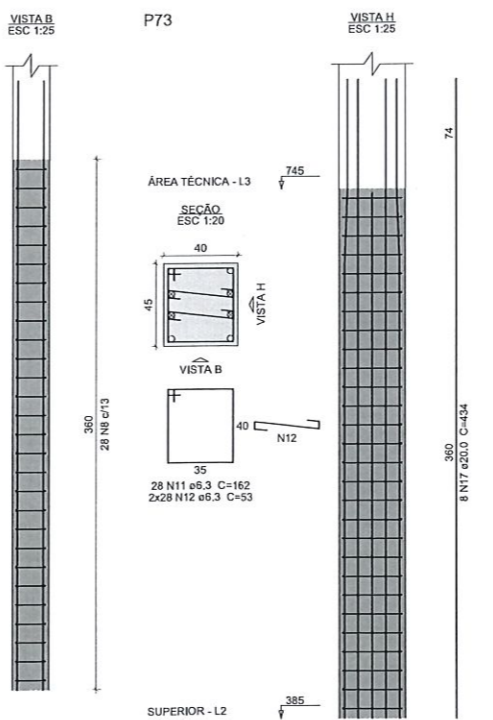
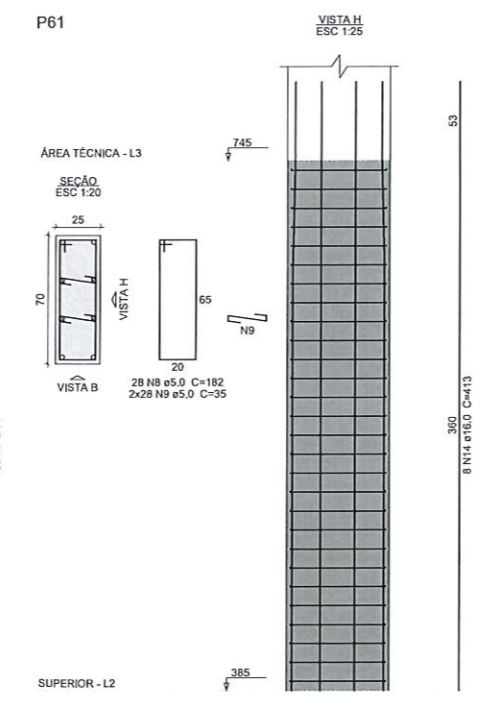
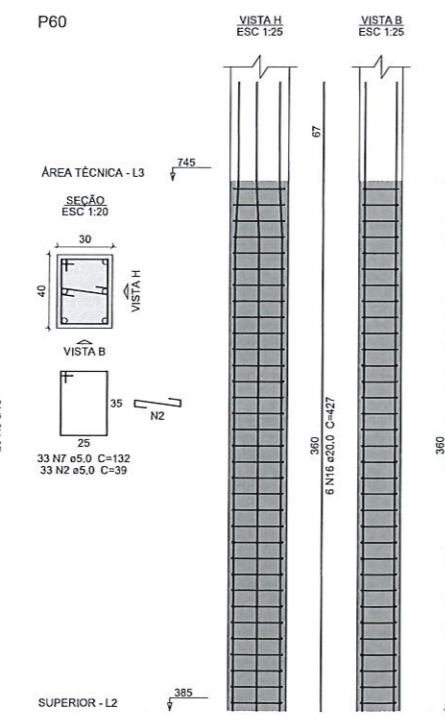
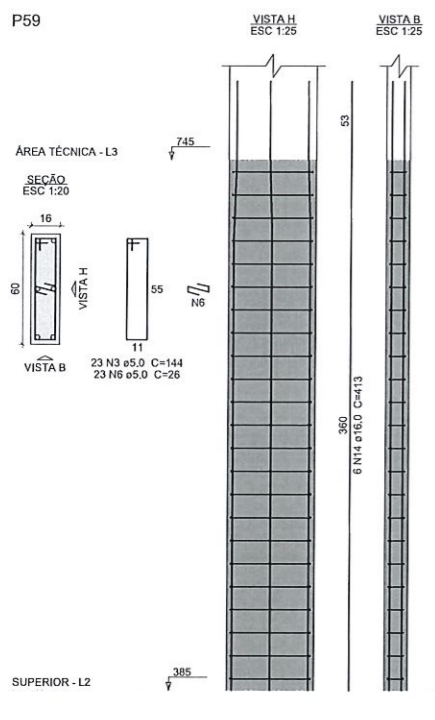
Relação do aço

AÇO	N	DIAM (mm)	QUANT	C.UNIT (cm)	C.TOTAL (cm)
CA60	1	5.0	33	152	5016
	2	5.0	99	39	3861
	3	5.0	53	144	7632
	4	5.0	30	26	780
	5	5.0	33	622	20526
	6	5.0	23	26	598
	7	5.0	66	132	8712
	8	5.0	28	182	5096
	9	5.0	56	35	1960
	10	5.0	66	40	2640
	11	6.3	28	162	4536
	12	6.3	56	53	2958
	13	12.5	18	147	2646
	14	16.0	32	413	13216
	15	16.0	6	434	2604
	16	20.0	14	427	5978
	17	20.0	8	434	3472

Resumo do aço

AÇO	DIAM (mm)	C.TOTAL (m)	PESO + 10% (kg)
CA50	6.3	75.1	20.2
	12.5	26.5	28
	16.0	158.2	274.7
	20.0	94.5	256.4
CA60	5.0	568.3	96.3
PESO TOTAL (kg)			
CA50			579.3
CA60			96.3

Volume de concreto (C-30) = 6,6 m³
Área de forma = 63,73 m²



Nº	Comentário	Data	Autor
0	Emissão inicial		

ALGETEC ENGENHARIA E CONSTRUÇÃO
Rua João Pessoa, 880 - sl B - Santa Terezinha
Palo Branco/PR
46.99102 2782
www.algetec.eng.br

Proprietário: Município de Palo Branco

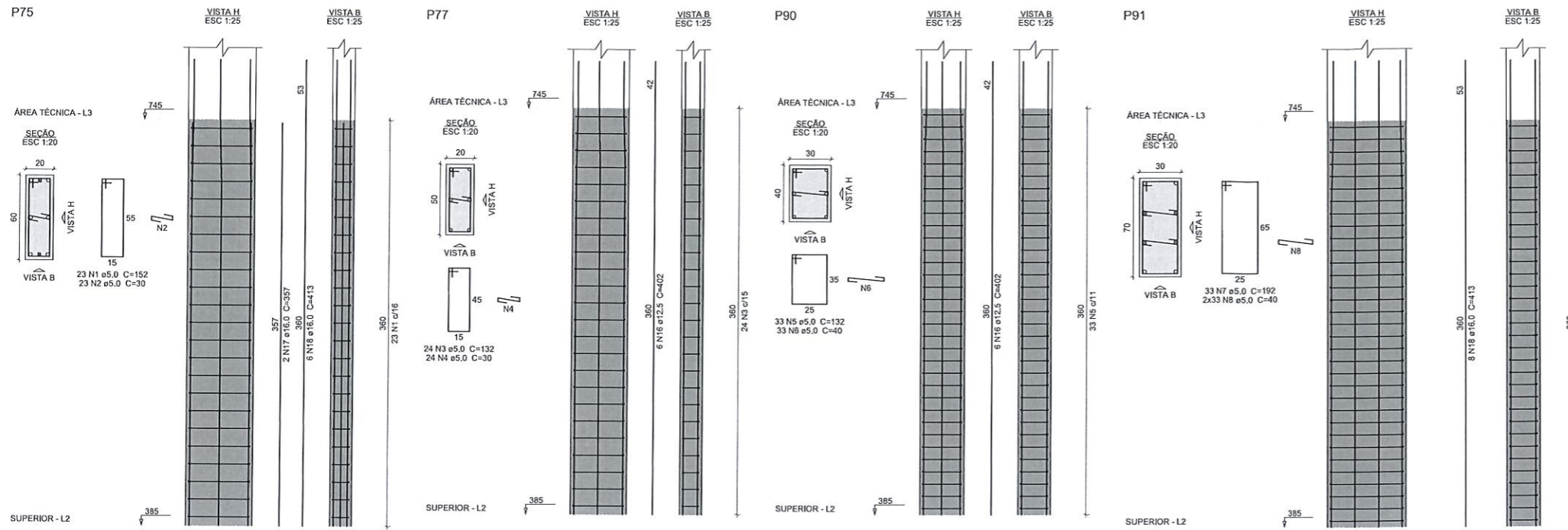
Resp. Técnico: Eng. Civil Daniel Parcianello, CREA: 072040/D
Eng. Civil André Mateus Canan, CREA: 193876/D
Eng. Civil Loriane C. Parcianello, CREA: 172355/D

Encl.: Rua Jaciela, Palo Branco/PR
Data: 12/07/2021

Obra: Teatro Municipal Naura Rigon
Escala: Indicada

Referência: Pavimento: Área Técnica
Pilares 3

32
93



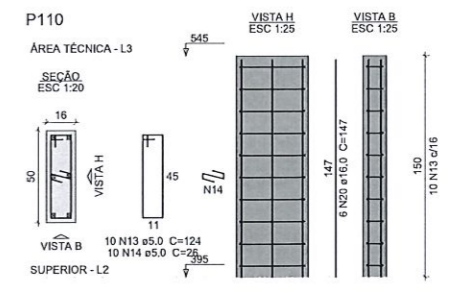
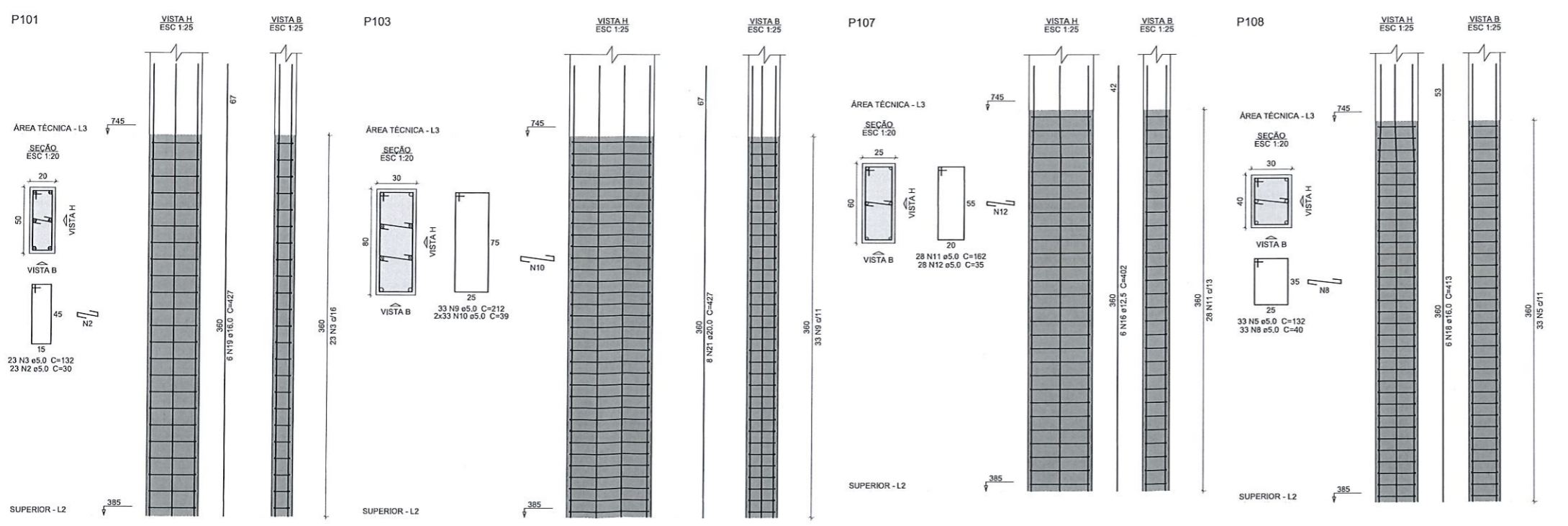
Relação do aço

AÇO	N	DIAM (mm)	QUANT	C.UNIT (cm)	C.TOTAL (cm)
CA60	1	5.0	23	152	3496
	2	5.0	46	30	1380
	3	5.0	47	132	6204
	4	5.0	24	30	720
	5	5.0	66	132	8712
	6	5.0	33	40	1320
	7	5.0	33	192	6336
	8	5.0	99	40	3960
	9	5.0	33	212	6996
	10	5.0	66	39	2574
	11	5.0	28	162	4536
	12	5.0	28	35	980
	13	5.0	10	124	1240
	14	5.0	10	28	280
CA50	15	6.3	24	142	3408
	16	12.5	18	402	7236
	17	16.0	6	357	2142
	18	16.0	20	413	8260
	19	16.0	6	427	2562
	20	16.0	6	147	882
	21	20.0	8	427	3418

Resumo do aço

AÇO	DIAM (mm)	C.TOTAL (m)	PESO + 10% (kg)
CA50	6.3	34.1	9.2
	12.5	72.4	76.7
	16.0	138.5	240.4
	20.0	34.2	92.7
CA60	5.0	487.2	82.6
PESO TOTAL (kg)			
CA50		418.9	
CA60		82.6	

Volume de concreto (C-30) = 4.8 m³
Área de forma = 54.54 m²



Nº	Comentário	Data	Autor
0	Emissão inicial		

ALGETEC
ENGENHARIA E CONSTRUÇÃO

ALGETEC ENGENHARIA E CONSTRUÇÃO
Rua João Pessoa, 880 - sl B - Santa Terezinha
Pato Branco/PR
46. 99102 2782
www.algetec.eng.br

PROJETO ESTRUTURAL

Proprietário: Município de Pato Branco

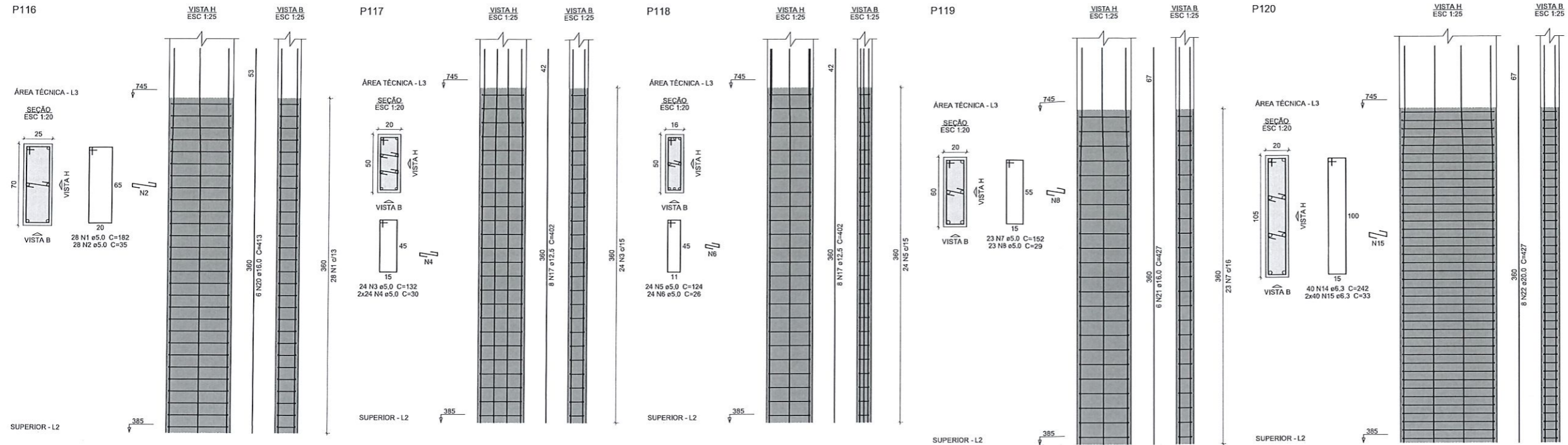
Resp. Técnico: Eng. Civil Daniel Perceval, CREA: 072040/D
Eng. Civil André Mateus Canan, CREA: 193875/D
Eng. Civil Loriane C. Parcianelo, CREA: 172355/D

End: Rua Jacaré Pato Branco/PR Data: 12/07/2021

Obra: Teatro Municipal Naura Rigon Escala: Indicada

Referência: Pavimento: Área Técnica Pilares 4

33
93



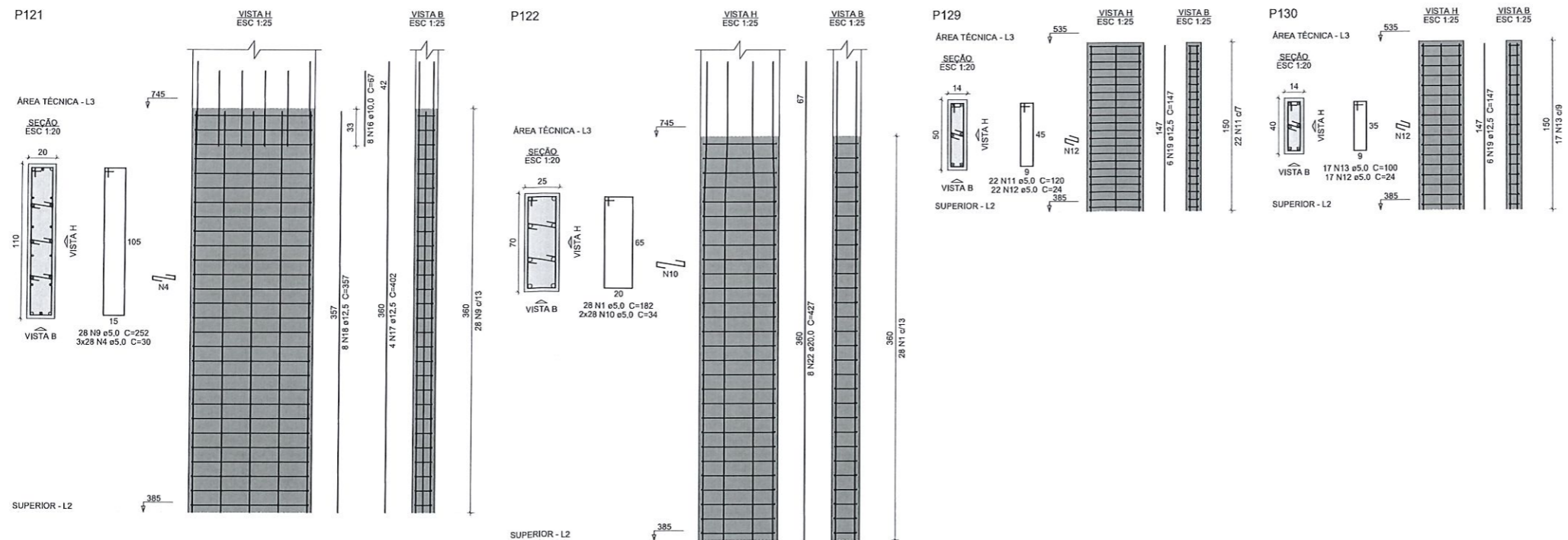
Relação do aço

ACO	N	DIAM (mm)	QUANT	C.UNIT (cm)	C.TOTAL (cm)
CA50	1	5.0	56	182	10192
	2	5.0	28	35	980
	3	5.0	74	132	3168
	4	5.0	132	30	3960
	5	5.0	24	124	2976
	6	5.0	24	26	624
	7	5.0	23	152	3496
	8	5.0	23	29	667
	9	5.0	28	252	7056
	10	5.0	56	34	1904
	11	5.0	22	120	2640
	12	5.0	39	24	936
	13	5.0	17	100	1700
	14	6.3	40	242	9680
	15	6.3	80	33	2640
	16	10.0	8	67	536
	17	12.5	20	402	8040
	18	12.5	8	357	2856
	19	12.5	12	147	1764
	20	16.0	6	413	2478
	21	16.0	6	427	2562
	22	20.0	16	427	6832

Resumo do aço

ACO	DIAM (mm)	C.TOTAL (m)	PESO + 10% (kg)
CA50	6.3	123.2	33.2
	10.0	5.4	3.6
	12.5	126.6	134.2
	16.0	50.4	67.5
	20.0	68.4	185.3
CA60	5.0	403	68.3
PESO TOTAL (kg)			
CA50		443.8	
CA60		68.3	

Volume de concreto (C-30) = 4.08 m³
Área de forma = 51.13 m²



Nº	Comentário	Data	Autor
0	Emissão inicial		

ALGETEC ENGENHARIA E CONSTRUÇÃO
Rua João Pessoa, 880 - sl B - Santa Terezinha
Pato Branco/PR
46.99102-2782
www.algetec.eng.br

PROJETO ESTRUTURAL

Resp. Técnico: Eng. Civil Daniel Parcianello, CREA: 072040/D
Eng. Civil André Mateus Canan, CREA: 193875/D
Eng. Civil Loriane C. Parcianello, CREA: 172355/D

Município de Pato Branco

Rua Jacirelá, Pato Branco/PR
Teatro Municipal Naura Rigon

Pavimento: Área Técnica
Pilares 5

Data: 12/07/2021
Escala: Indcada

34

93

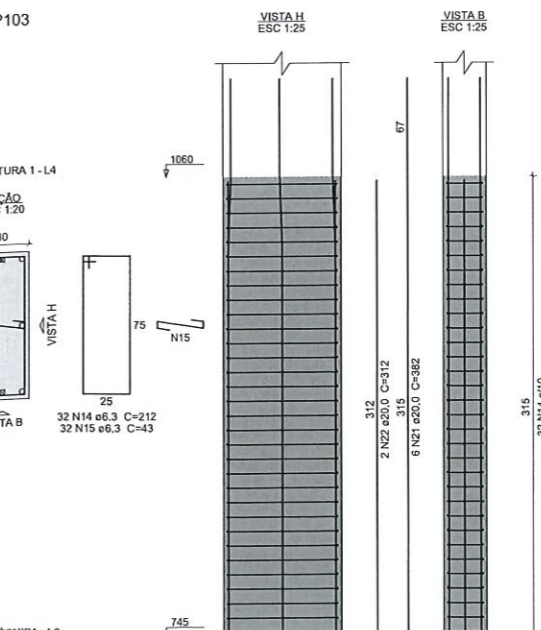
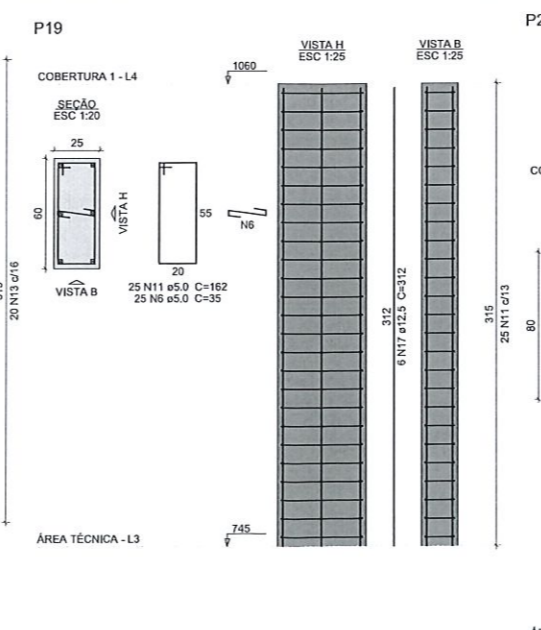
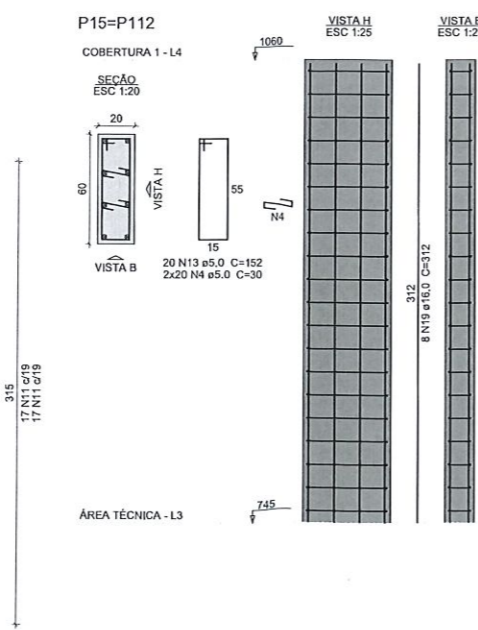
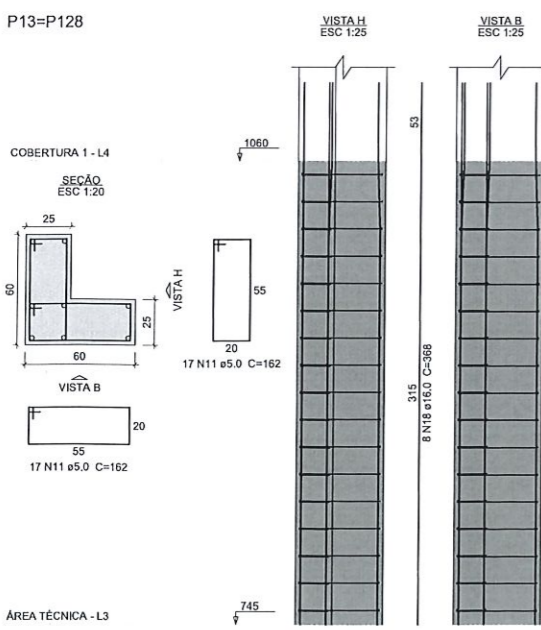
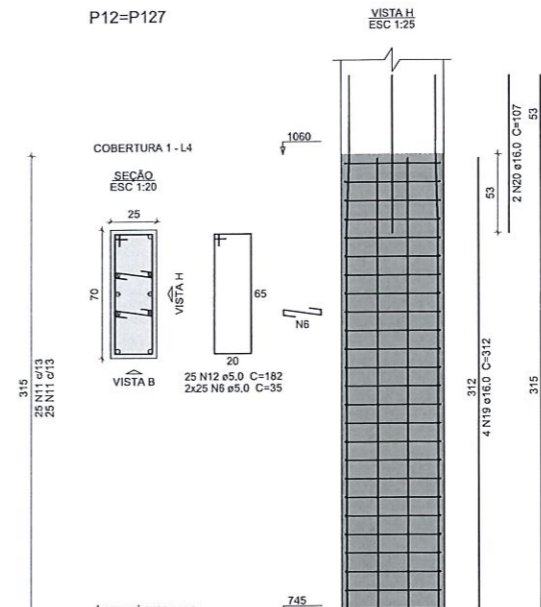
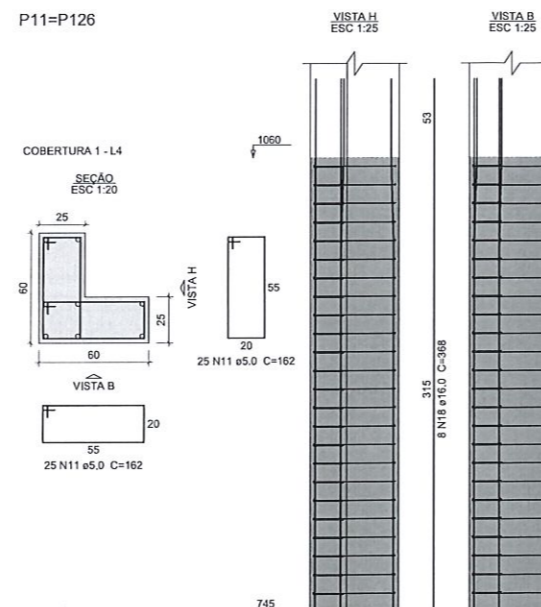
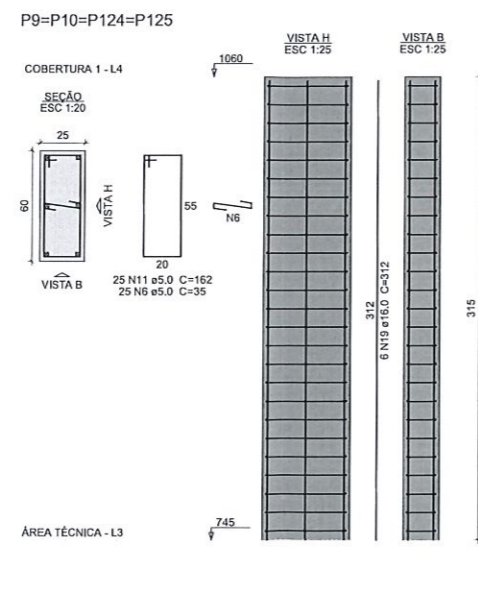
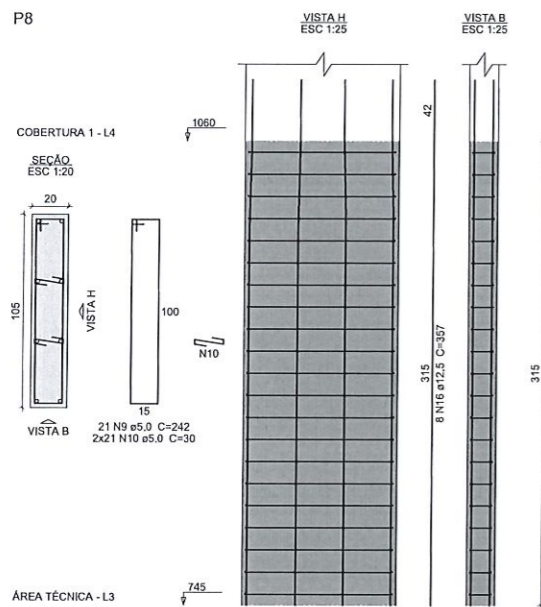
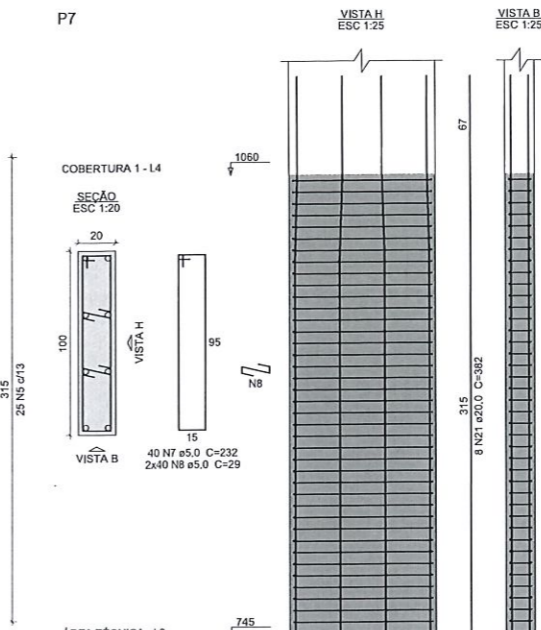
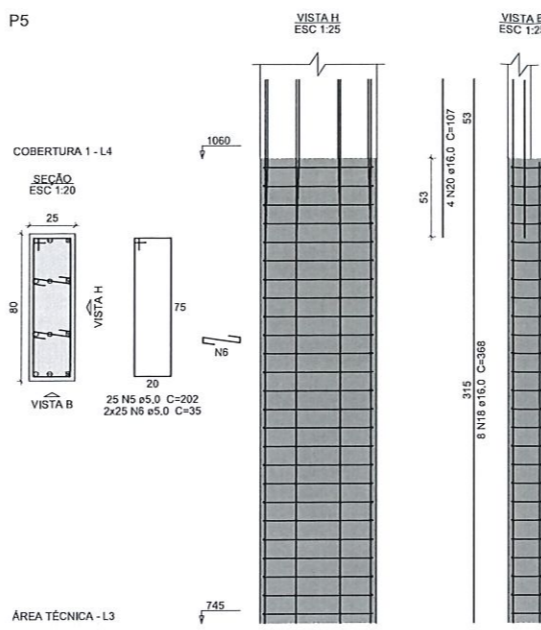
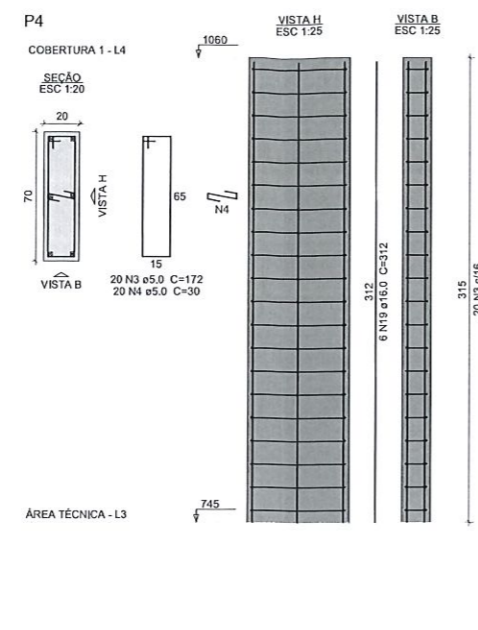
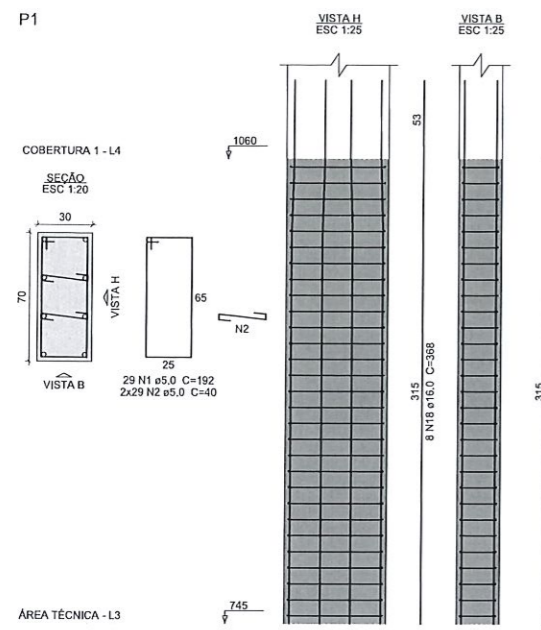
Relação do aço

CAÇO	N	DIAM (mm)	QUANT	C.UNIT (cm)	C.TOTAL (cm)
CA60	1	5.0	29	182	5268
	2	5.0	58	40	2320
	3	5.0	172	30	5160
	4	5.0	100	30	3000
	5	5.0	25	202	5050
	6	5.0	275	35	9625
	7	5.0	40	232	9280
	8	5.0	80	29	2320
	9	5.0	21	242	5082
	10	5.0	42	30	1260
	11	5.0	293	162	47466
CA50	12	5.0	50	182	9100
	13	5.0	40	152	6080
	14	6.3	64	212	13568
	15	6.3	64	43	2752
	16	12.5	8	357	2856
	17	12.5	6	312	1872
	18	16.0	56	358	23508
	19	16.0	54	312	16944
	20	16.0	8	107	856
	21	20.0	20	382	7640
	22	20.0	4	312	1248

Resumo do aço

CAÇO	DIAM (mm)	C.TOTAL (m)	PESO + 10% (kg)
CA50	6.3	163.2	43.9
	12.5	47.3	50.1
	16.0	383.2	665.2
	20.0	88.9	241.1
CA60	5.0	1096	185.8
PESO TOTAL (kg)			
CA50		1000.3	
CA60		185.8	

Volume de concreto (C-30) = 11.75 m³
 Área de forma = 126.95 m²



Nº	Comentário	Data	Autor
0	Emissão inicial		

ALGETEC ENGENHARIA E CONSTRUÇÃO
 Rua João Pessoa, 880 - sl B - Santa Terezinha
 Pato Branco/PR
 46-99102-2762
 www.algetec.eng.br

PROJETO ESTRUTURAL

Projeto: Rua Jacirê, Pato Branco/PR
 Data: 12/07/2021

Execução: Teatro Municipal Naura Rigon
 Licença: Indicada

Referência: Pavimento: Cobertura 1
 Pilares 1

35
93

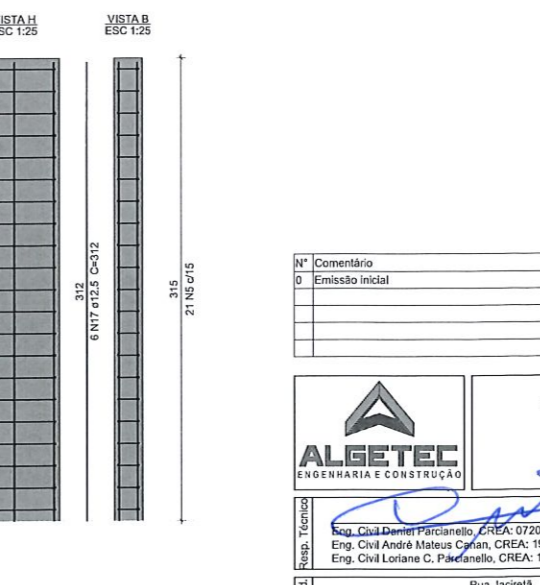
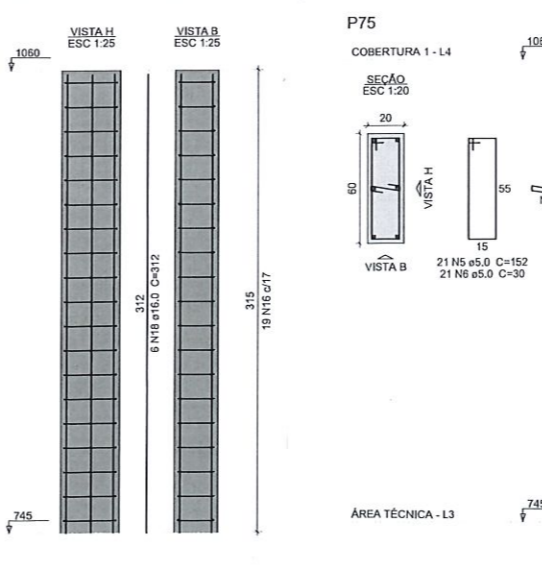
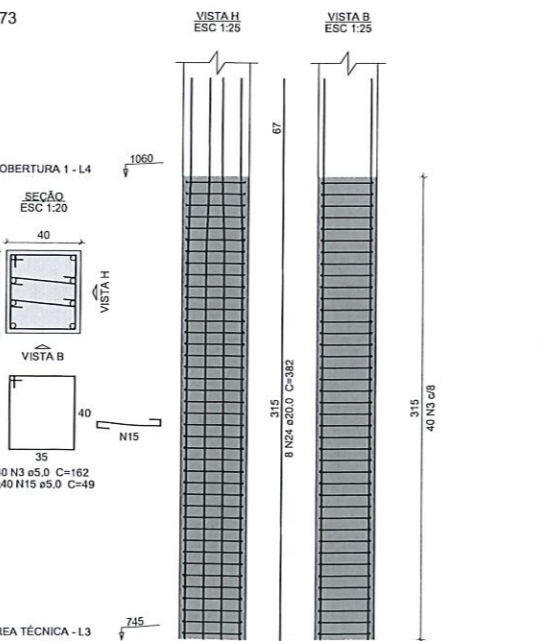
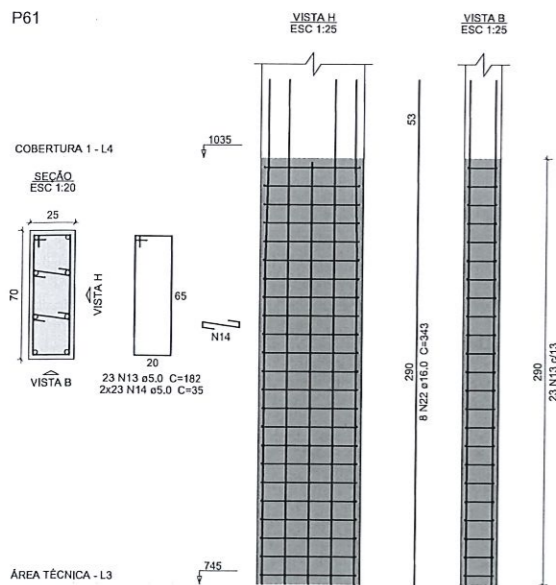
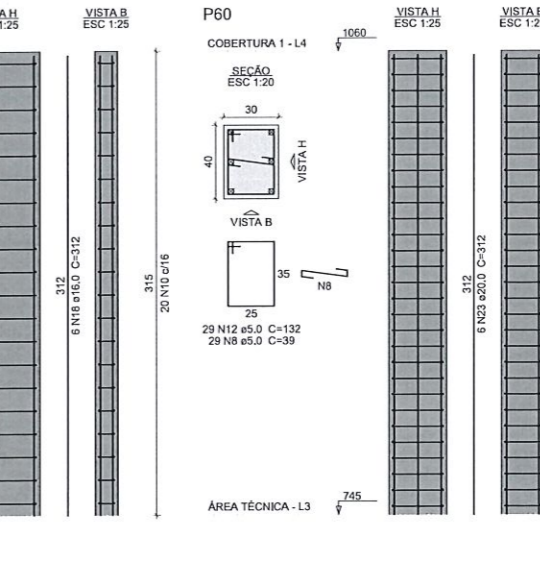
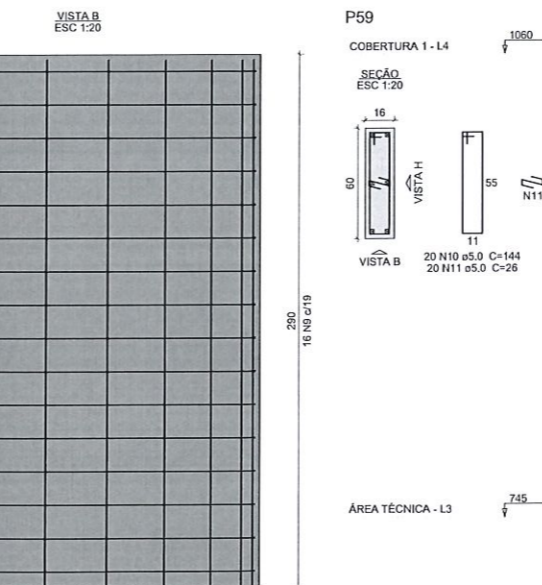
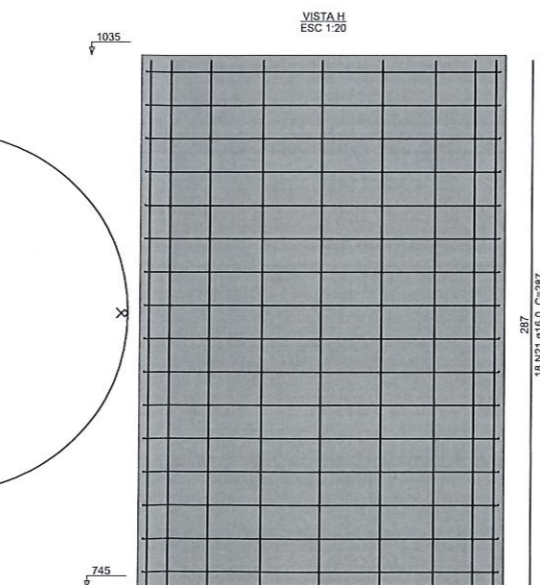
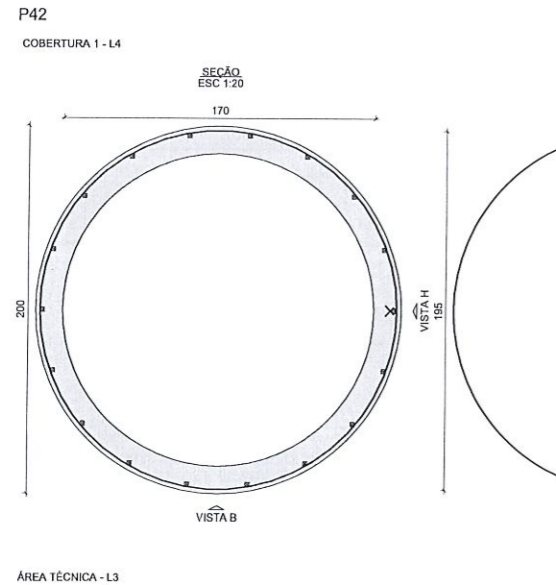
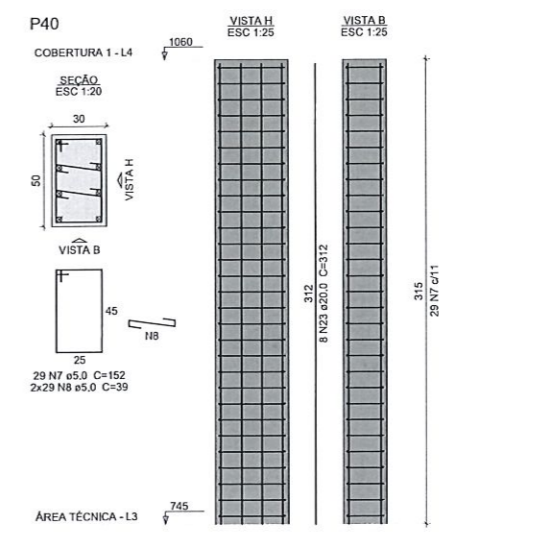
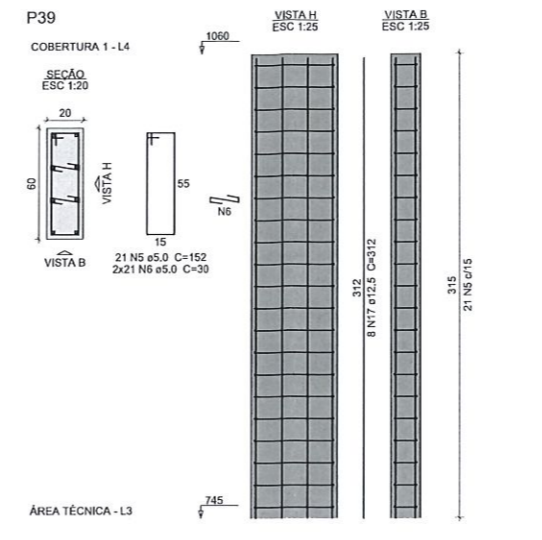
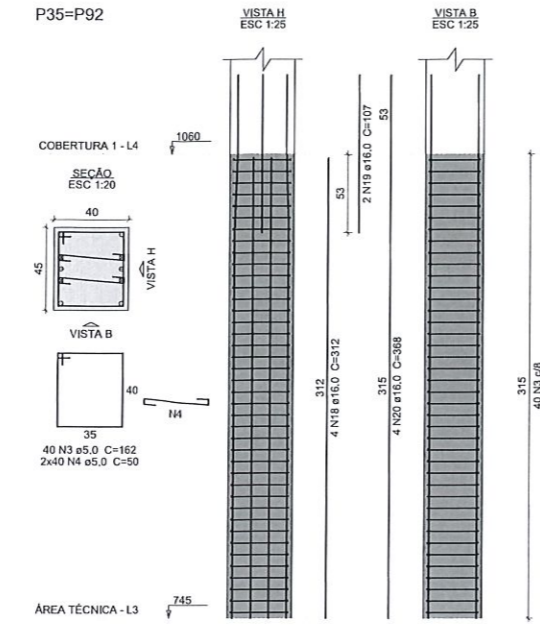
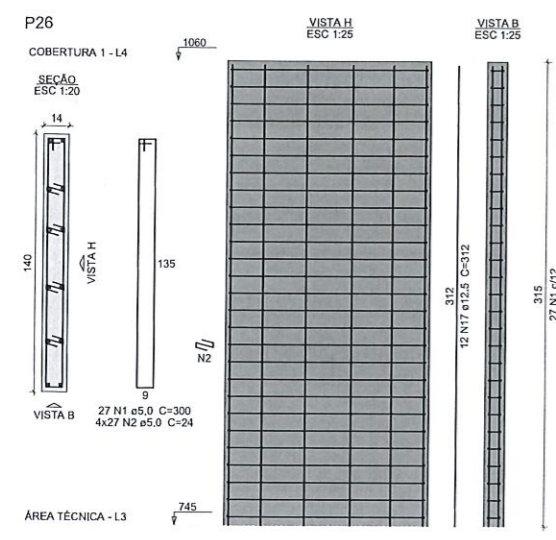
Relação do aço

CAÇO	N	DIAM (mm)	QUANT	C.JUNIT (cm)	C.TOTAL (cm)
CA60	1	5.0	27	300	8100
	2	5.0	108	24	2592
	3	5.0	120	162	19440
	4	5.0	160	50	8000
	5	5.0	42	152	6384
	6	5.0	63	30	1890
	7	5.0	29	152	4408
	8	5.0	87	39	3393
	9	5.0	16	622	9952
	10	5.0	20	144	2660
CA50	11	5.0	20	26	520
	12	5.0	29	132	3828
	13	5.0	23	182	4186
	14	5.0	46	35	1610
	15	5.0	80	49	3920
	16	8.3	19	132	2508
	17	12.5	28	312	8112
	18	16.0	20	312	6240
	19	16.0	4	107	428
	20	16.0	8	368	2944
	21	16.0	18	287	5166
	22	16.0	6	343	2744
	23	20.0	14	312	4368
	24	20.0	8	382	3056

Resumo do aço

CAÇO	DIAM (mm)	C.TOTAL (m)	PESO + 10% (kg)
CA50	6.3	25.1	6.8
	12.5	81.2	86
	16.0	175.3	304.2
	20.0	74.3	201.4
CA60	5.0	811.1	137.5
PESO TOTAL (kg)			
CA50		598.3	
CA60		137.5	

Vol. de concreto (C-30) = 7.64 m³
Área de forma = 78.23 m²



Nº	Comentário	Data	Autor
0	Emissão inicial		

ALGETEC ENGENHARIA E CONSTRUÇÃO
Rua João Pessoa, 880 - sl B - Santa Terezinha
Pato Branco/PR
46.99102-2782
www.algetec.eng.br

PROJETO ESTRUTURAL

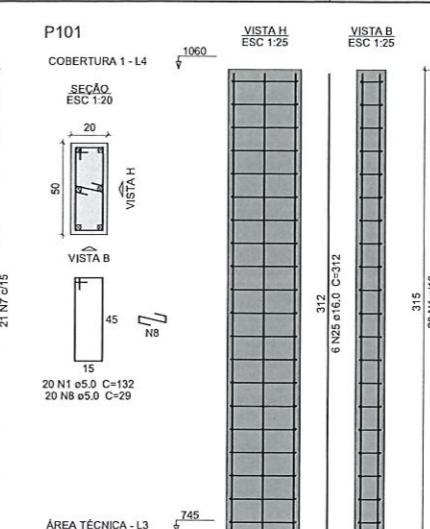
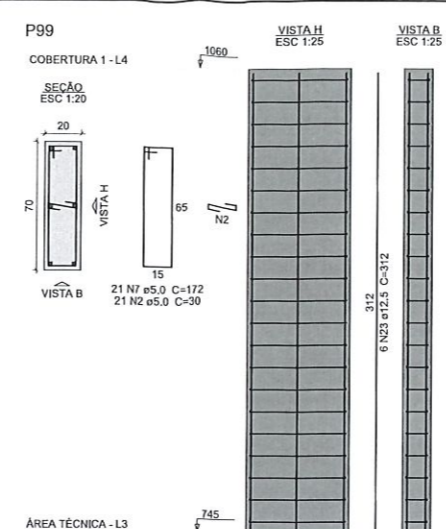
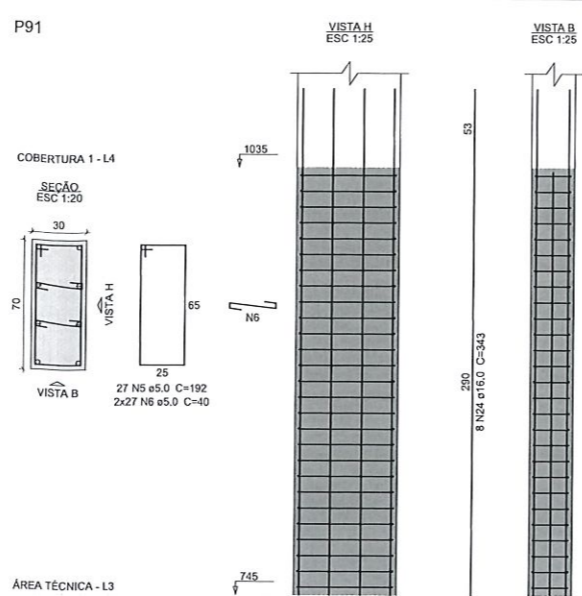
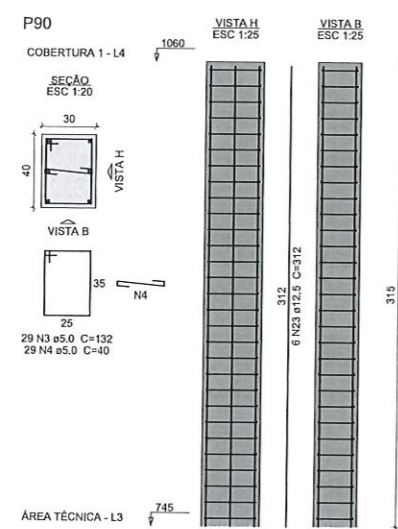
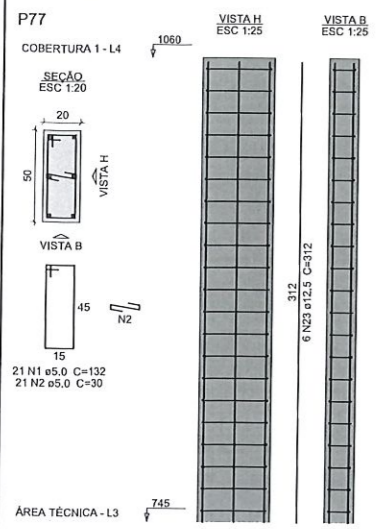
Proprietário: Município de Pato Branco - PR

Resp. Técnico: Eng. Civil Danilo P. Parolanello, CREA: 072040/D
Eng. Civil André Mateus Casan, CREA: 193875/D
Eng. Civil Loriane C. P. Parolanello, CREA: 172355/D

End:	Rua Jacirelá Pato Branco/PR	Data:	12/07/2021
Obra:	Teatro Municipal Naura Rigon	Escala:	Indicada
Referência:	Pavimento: Cobertura 1 Pilares 2		

36

93



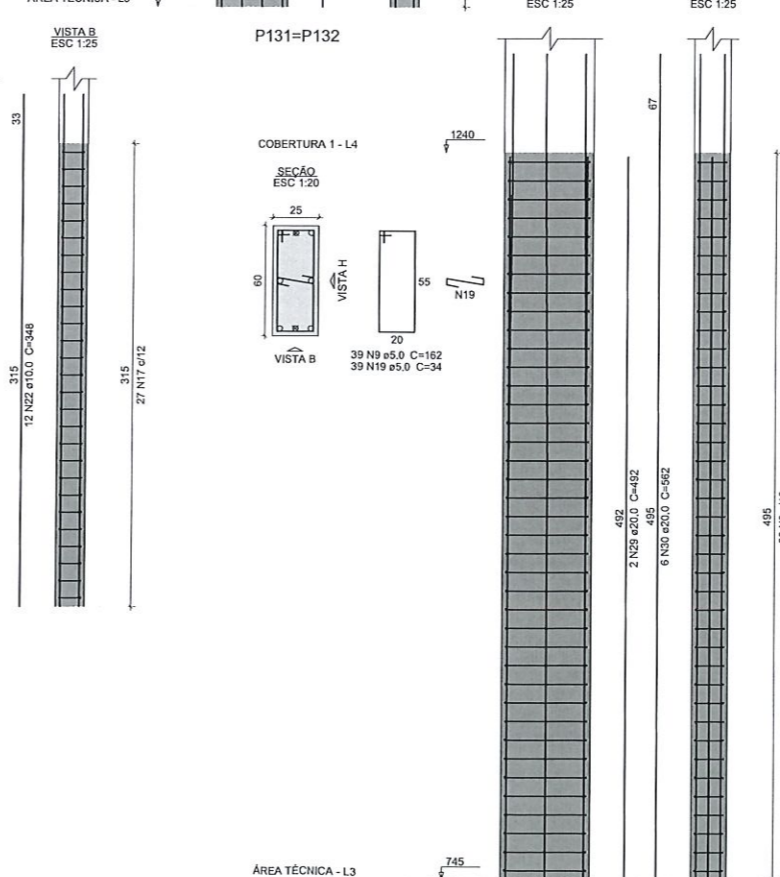
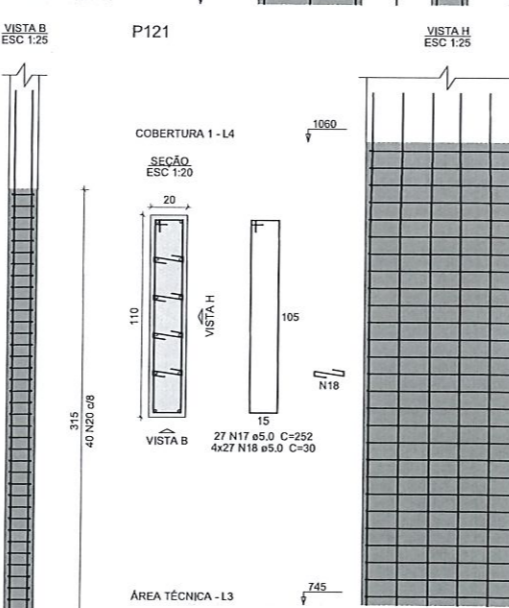
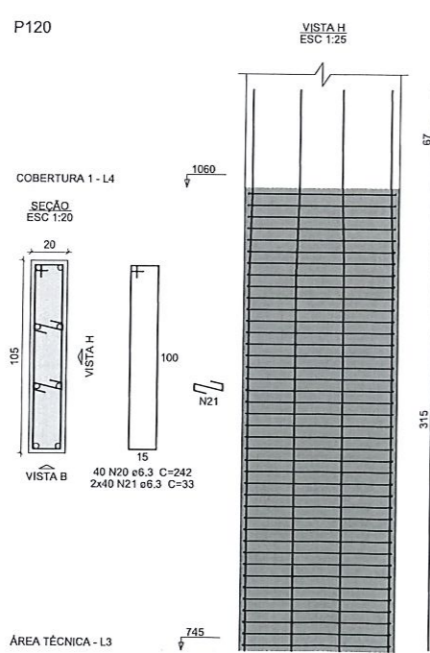
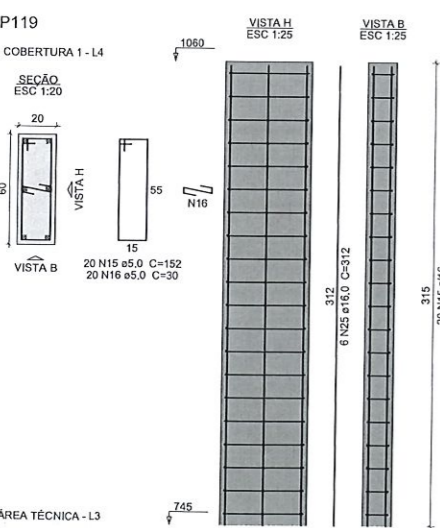
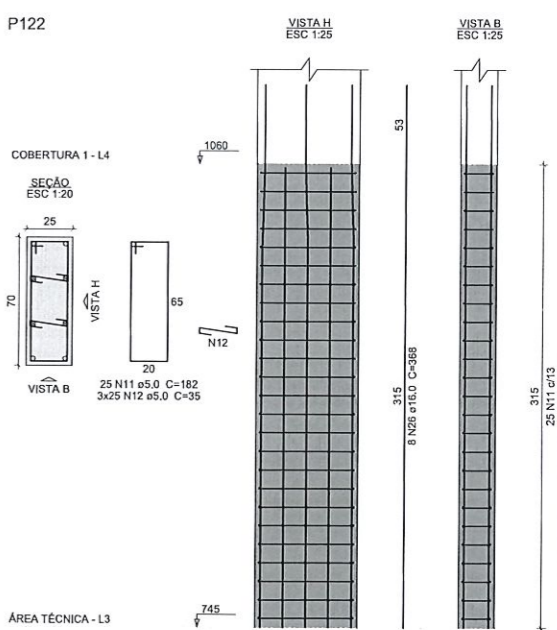
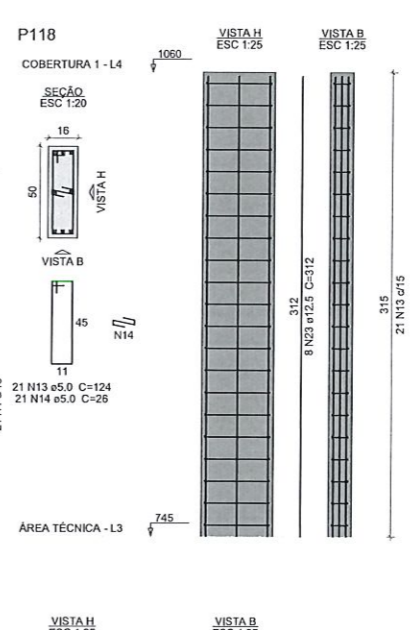
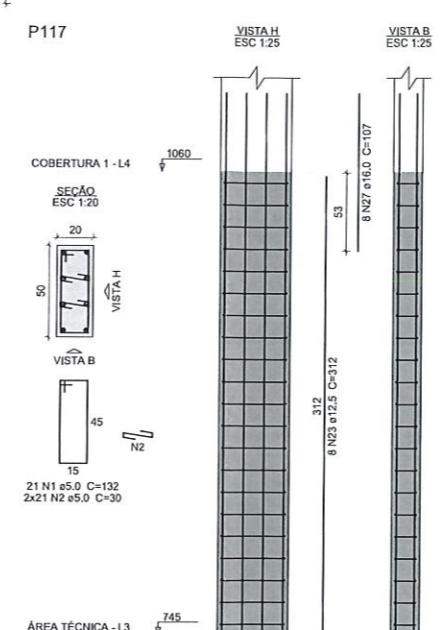
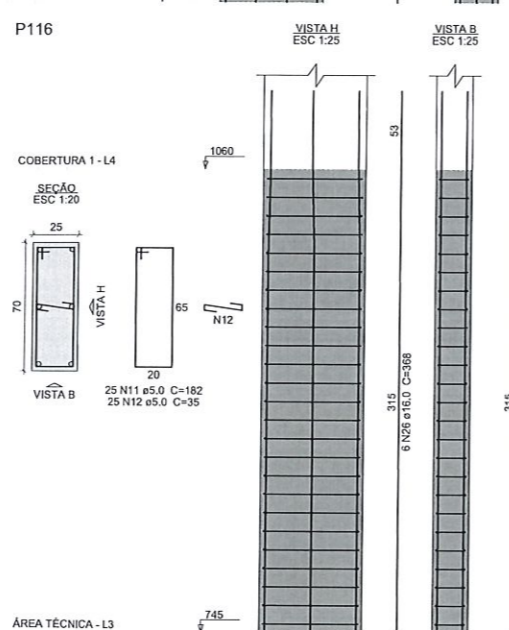
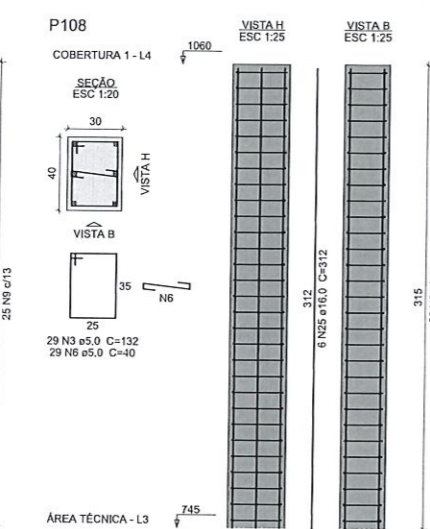
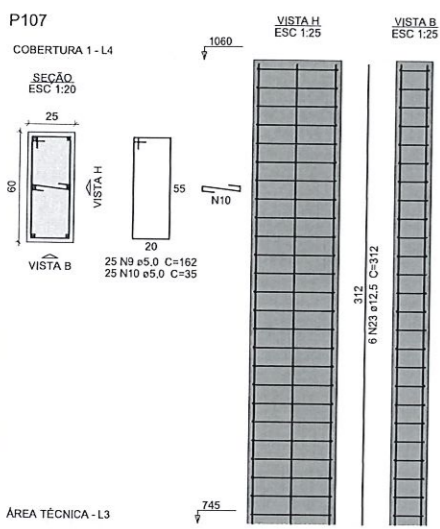
Relação do aço

AÇO	N	DIAM (mm)	QUANT	C.UNIT (cm)	C.TOTAL (cm)
CA60	1	5.0	62	132	8184
	2	5.0	84	30	2520
	3	5.0	58	132	7656
	4	5.0	29	40	1160
	5	5.0	27	192	5184
	6	5.0	83	40	3320
	7	5.0	21	172	3612
	8	5.0	20	29	580
	9	5.0	103	162	16686
	10	5.0	25	35	875
	11	5.0	50	182	9100
	12	5.0	100	35	3500
	13	5.0	21	124	2604
	14	5.0	21	26	546
	15	5.0	20	152	3040
	16	5.0	20	30	600
	17	5.0	27	252	6804
	18	5.0	108	30	3240
	19	5.0	78	34	2652
	20	6.3	40	242	9680
	21	6.3	80	33	2640
	22	10.0	12	348	4176
	23	12.5	40	312	12480
	24	16.0	8	343	2744
	25	16.0	18	312	5616
	26	16.0	14	358	5012
	27	16.0	8	107	856
	28	20.0	8	382	3056
	29	20.0	4	492	1968
	30	20.0	12	562	6744

Resumo do aço

AÇO	DIAM (mm)	C.TOTAL (m)	PESO + 10% (kg)
CA50	6.3	723.2	33.2
	10.0	41.8	28.3
	12.5	124.8	132.2
	16.0	143.7	249.5
	20.0	117.7	319.2
CA60	5.0	818.7	138.8
PESO TOTAL (kg)			
CA50			762.4
CA60			138.8

Volume de concreto (C-30) = 7.8 m³
Área de forma = 92.94 m²



Nº	Comentário	Data	Autor
0	Emissão inicial		

ALGETEC ENGENHARIA E CONSTRUÇÃO
Rua João Pessoa, 880 - sl B - Santa Terezinha
Pato Branco/PR
46. 99102-2782
www.algetec.eng.br

Projeto Estrutural

Eng. Civil Daniel Paretelli, CREA: 072040/D
Eng. Civil André Mateus Canan, CREA: 193875/D
Eng. Civil Loriane Carcinello, CREA: 172355/D

Município de Pato Branco

Rua Jaciretã
Pato Branco/PR

12/07/2021

Teatro Municipal Naura Rigon

Indicada

Pavimento: Cobertura 1
Pilares 3

37
93