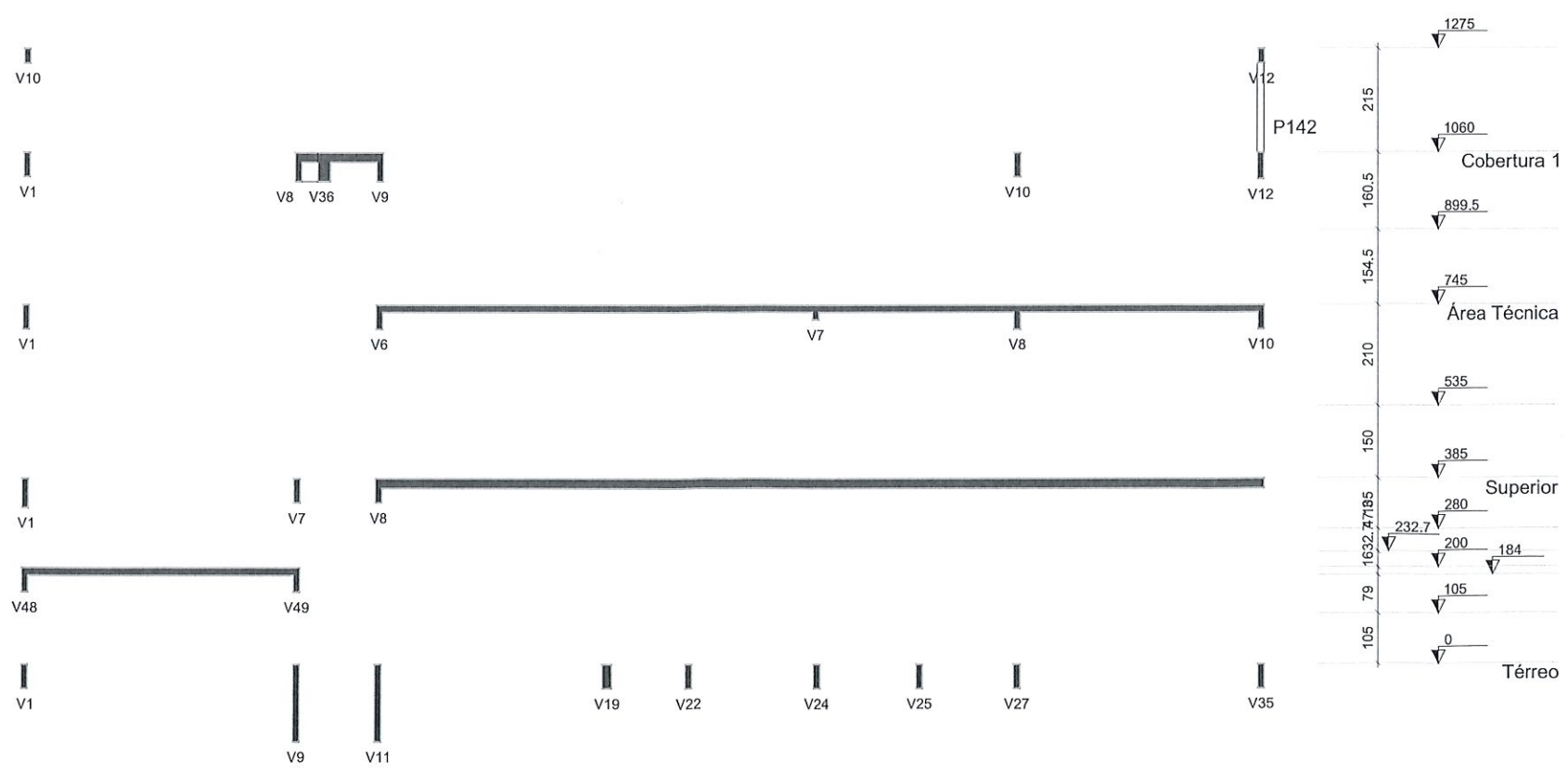





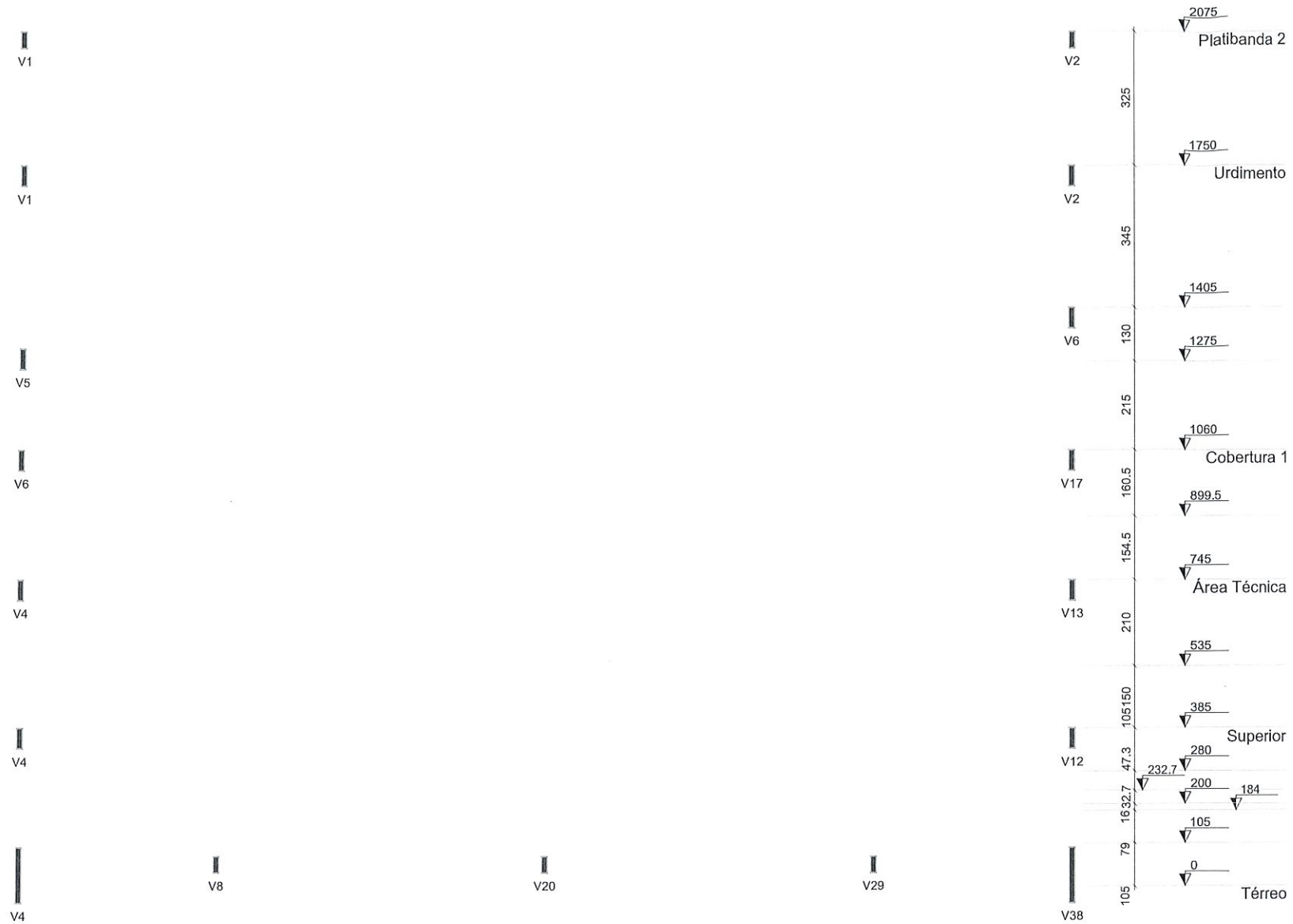
**Corte C-C**  
escala 1:100



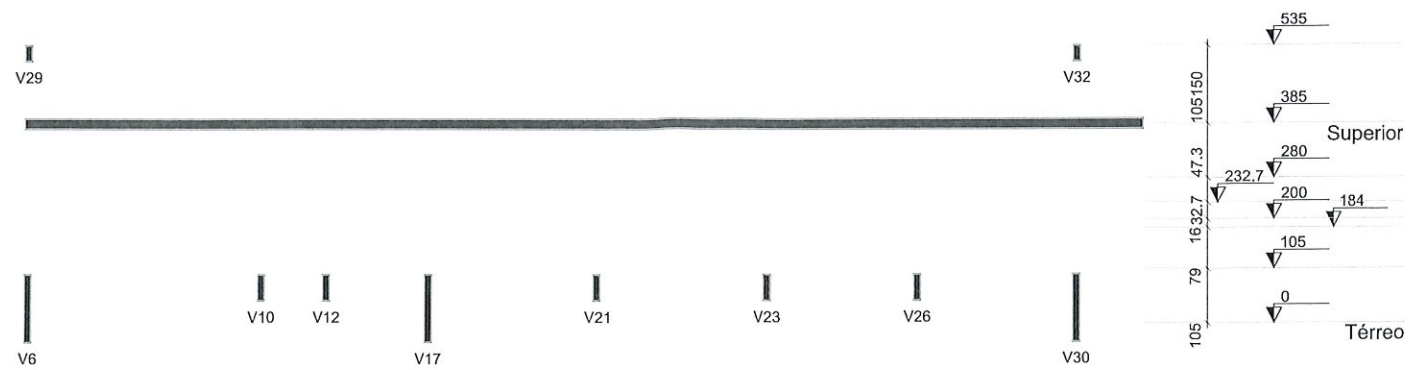
**Corte D-D**  
escala 1:100

 <b>ALGETEC</b> ENGENHARIA E CONSTRUÇÃO	<b>ALGETEC ENGENHARIA E CONSTRUÇÃO</b> Rua João Pessoa, 880 - sl B - Santa Terezinha Pato Branco/PR 46. 99102 2782 www.algetec.eng.br		PROJETO ESTRUTURAL
	Resp. Técnico Eng. Civil Daniel Parcianello, CREA: 072040/D Eng. Civil André Mateus Canan, CREA: 193875/D Eng. Civil Loriane C. Parcianello, CREA: 172355/D	Proprietário Município de Pato Branco - PR	
End. Rua Jaciretã Pato Branco/PR	Data 12/07/2021	<div style="font-size: 2em; font-weight: bold; text-align: center;">13</div> <div style="font-size: 1.5em; font-weight: bold; text-align: center;">93</div>	
Obra Teatro Municipal Naura Rigon	Escala Indicada		
Referência Pavimento: Todos Corte C-C e D-D			





**Corte G-G**  
escala 1:100



**Corte H-H**  
escala 1:100



**ALGETEC ENGENHARIA E CONSTRUÇÃO**  
Rua João Pessoa, 880 - sl B - Santa Terezinha  
Pato Branco/PR  
46. 99102 2782  
www.algetec.eng.br

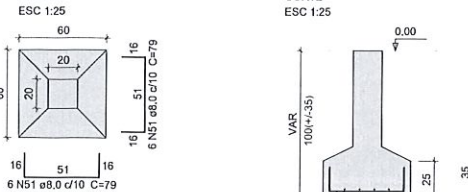
PROJETO ESTRUTURAL

Resp. Técnico	Eng. Civil Daniel Parcianello, CREA: 072040/D Eng. Civil André Mateus Canan, CREA: 193875/D Eng. Civil Loriane C. Parcianello, CREA: 172355/D	Proprietário	Município de Pato Branco - PR
End.	Rua Jaciretã Pato Branco/PR	Data	12/07/2021
Obra	Teatro Municipal Naura Rigon	Escala	Indicada
Referência	Pavimento: Térreo Estrutural		

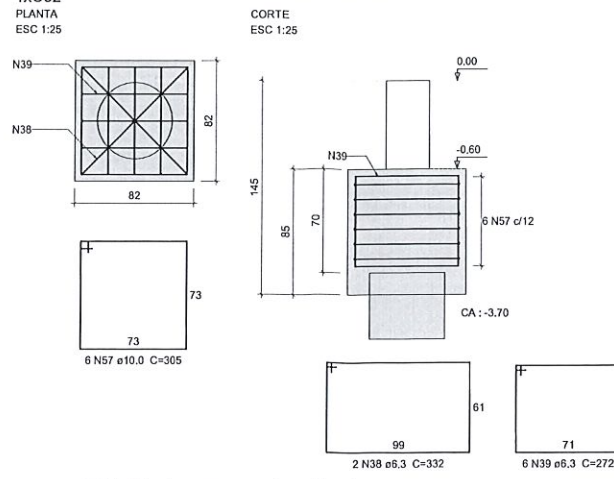
**15**  
**93**



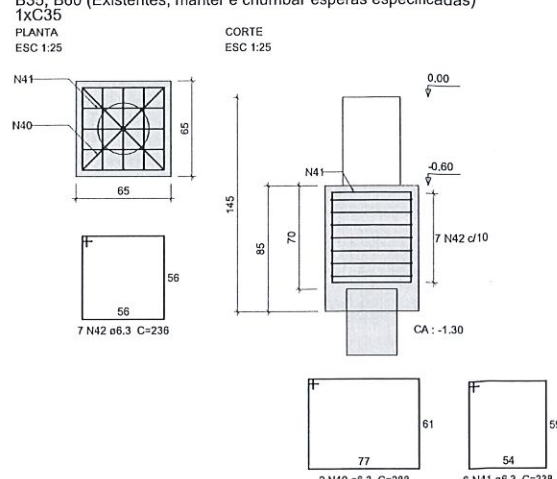
**S113, S115 (executar)**



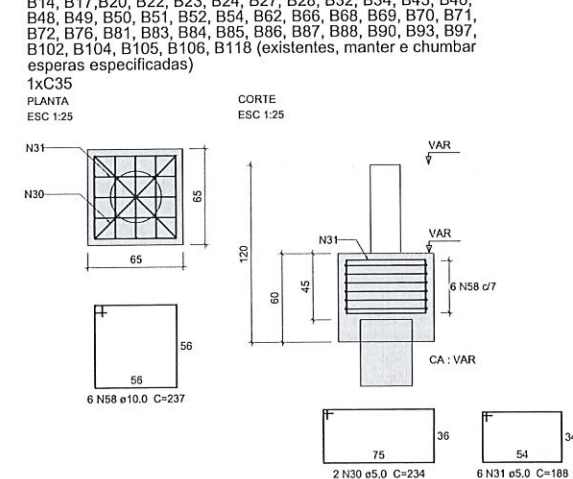
**B1 (executado, manter e chumbar esperas especificadas)**



**B2 (Executar)**



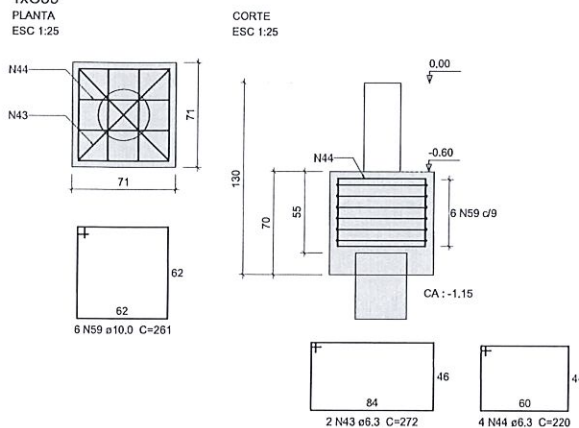
**B3, B29, B36, B55, B57, B63, B77, B78, B89, B94 (executar)**



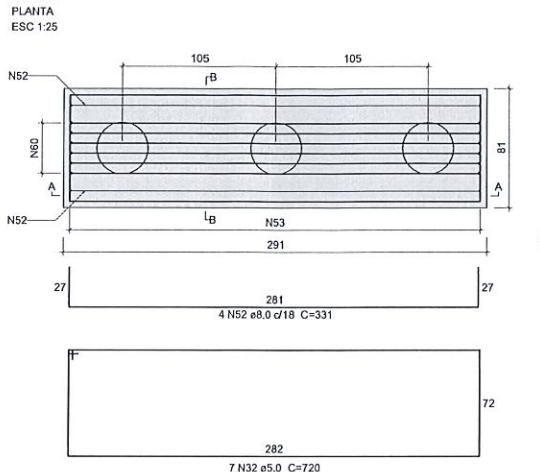
**Relação do aço**

ACO	N	DIAM (mm)	QUANT	C.UNIT (cm)	C.TOTAL (cm)
CA60	30	5.0	20	234	4680
	31	5.0	60	181	10860
	32	5.0	7	720	5040
	33	5.0	2	288	576
	34	5.0	4	242	968
	35	5.0	5	236	1180
	36	5.0	2	350	700
	37	5.0	6	280	1680
CA50	38	6.3	0	332	0
	39	6.3	0	272	0
	40	6.3	2	288	576
	41	6.3	6	238	1428
	42	6.3	7	236	1652
	43	6.3	0	272	0
	44	6.3	0	220	0
	45	6.3	5	292	1460
	46	6.3	10	254	2540
	47	6.3	20	208	4160
	48	6.3	0	220	0
	49	6.3	6	656	3936
	50	6.3	7	340	2380
	51	8.0	24	79	1896
	52	8.0	4	331	1324
	53	8.0	12	336	4032
	54	8.0	4	314	1256
	55	8.0	6	278	1668
	56	8.0	12	272	3264
	57	10.0	0	305	0
	58	10.0	85	237	20145
	59	10.0	0	281	0
	60	12.5	6	457	2742
	61	12.5	0	276	0
	62	16.0	7	409	2863

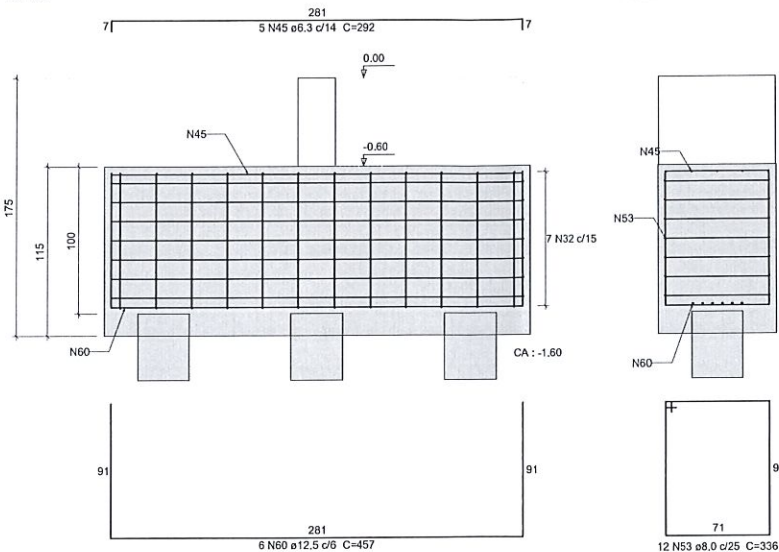
**B4, B12, B116 (existente, manter e chumbar esperas especificadas)**



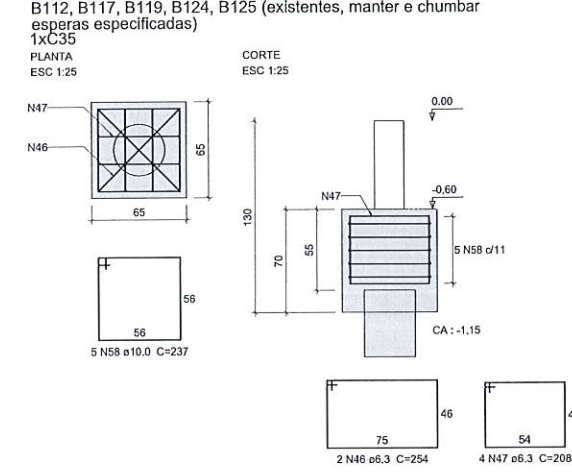
**B5 (existente, romper e refazer bloco)**



**B6, B18, B41, B109, B123 (executar)**



**B9, B10, B15, B19, B33, B47, B67, B82, B98, B107, B108, B110, B112, B117, B119, B124, B125 (existentes, manter e chumbar esperas especificadas)**

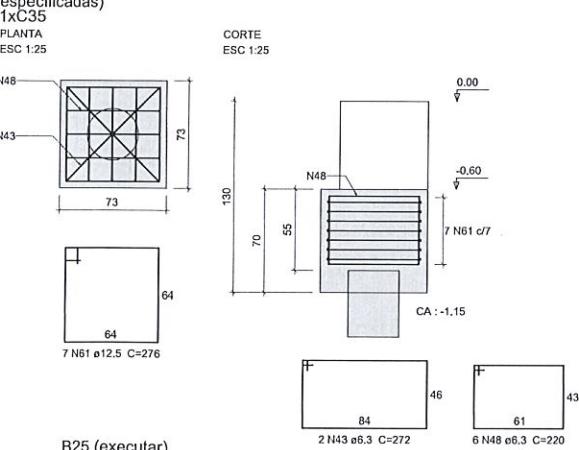


**Resumo do aço**

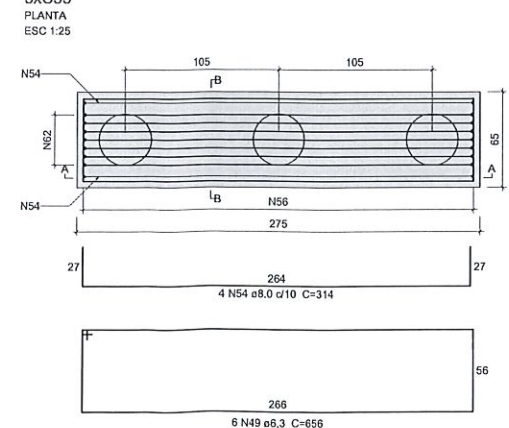
ACO	DIAM (mm)	C.TOTAL (m)	PESO + 10% (kg)
CA50	6.3	181.4	48.8
	8.0	134.4	58.3
	10.0	201.5	136.6
	12.5	27.5	29.1
	16.0	28.7	49.7
CA60	5.0	261.1	44.3
<b>PESO TOTAL (kg)</b>			
CA50		322.5	
CA60		44.3	

Volume de concreto (C-30) = 9.76 m³  
Área de forma = 48.59 m²

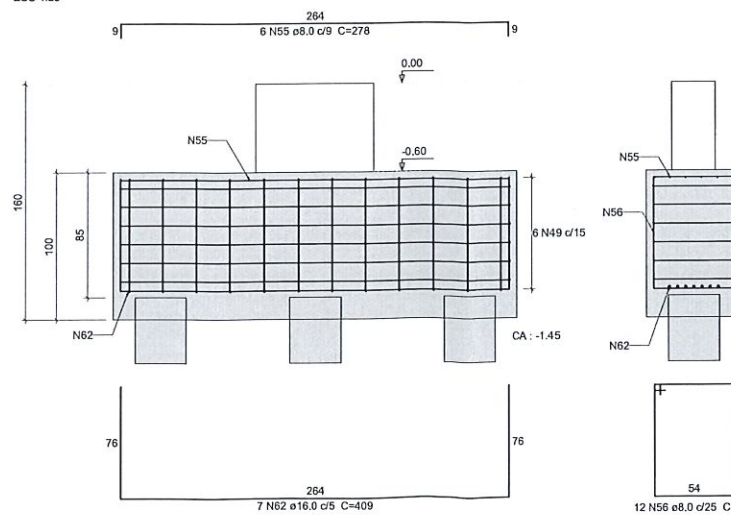
**B11, B13, B126, B128 (existentes, manter e chumbar esperas especificadas)**



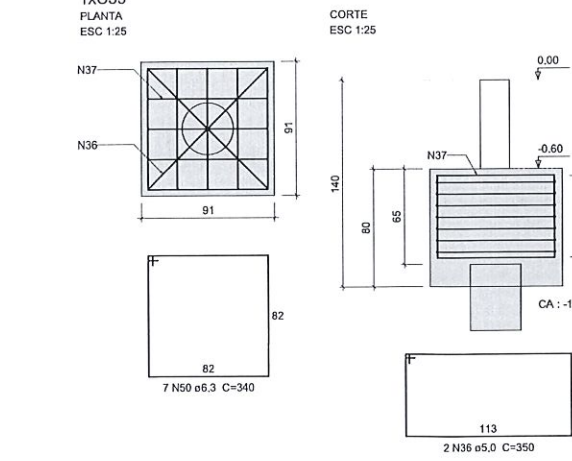
**B21 (existente, romper e refazer bloco)**



**B37 (existente, romper e refazer bloco)**



**B25 (executar)**



Nº	Comentário	Data	Autor
0	Emissão inicial		
1	Especificação de blocos existentes e a executar	10/08/2021	André M. Canan

**ALGETEC ENGENHARIA E CONSTRUÇÃO**  
Rua João Pessoa, 880 - sl B - Santa Terezinha  
Palo Branco/PR  
46.99102-2782  
www.algetec.eng.br

Proprietário: Rua Jacirã, 880 - sl B - Santa Terezinha, Palo Branco - PR  
Município de Palo Branco - PR

Encl	Data
12/07/2021	

Obra: Teatro Municipal Naura Rigon  
Escala: Indicada

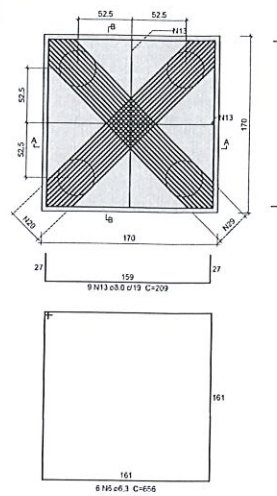
Referência: Pavimento: Térreo  
Blocos 1 e Sepaltes



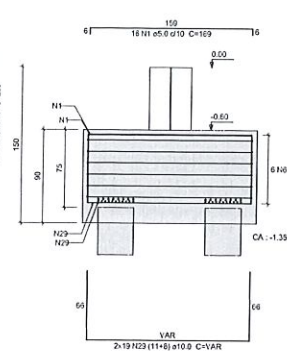




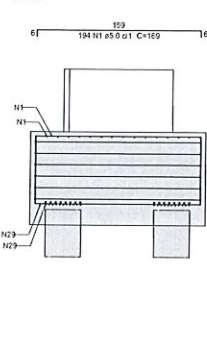
**B7-B (existente, romper e refazer bloco)**  
2x2C35  
PLANTA  
ESC 1:25



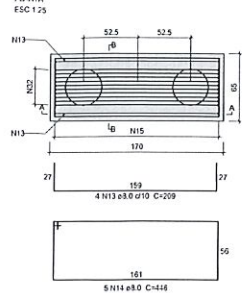
**CORTE A-A**  
ESC 1:25



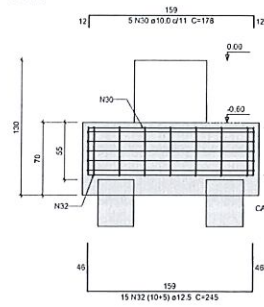
**CORTE B-B**  
ESC 1:25



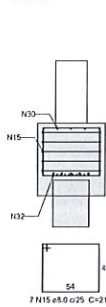
**B91 (executar)**  
2x2C35  
PLANTA  
ESC 1:25



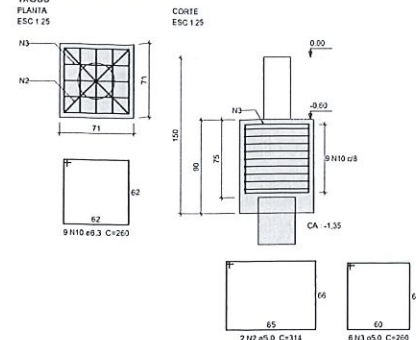
**CORTE A-A**  
ESC 1:25



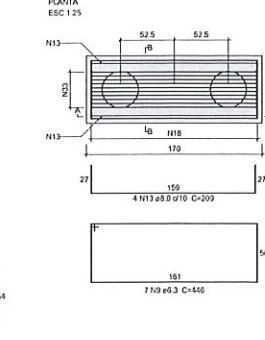
**CORTE B-B**  
ESC 1:25



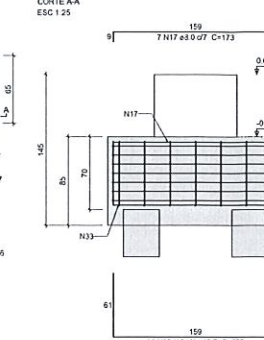
**B122 (existente, romper e refazer bloco)**  
2x2C35  
PLANTA  
ESC 1:25



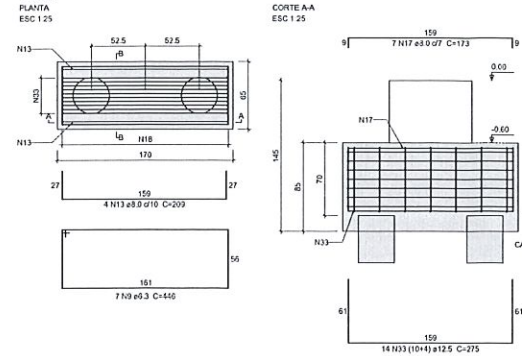
**CORTE A-A**  
ESC 1:25



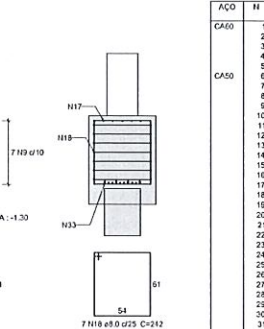
**CORTE B-B**  
ESC 1:25



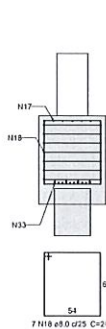
**B103 (existente, romper e refazer bloco)**  
2x2C35  
PLANTA  
ESC 1:25



**CORTE A-A**  
ESC 1:25



**CORTE B-B**  
ESC 1:25



Relação do aço

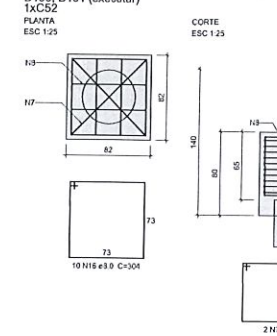
CAO	N	DIAM (mm)	QUANT	CUBIT (m³)	C.TOTAL (kg)
CA50	1	5,0	421	163	11149
	2	5,0	2	314	628
	3	5,0	6	201	1500
	4	5,0	14	170	2300
	5	5,0	32	446	12232
	6	6,3	12	656	7872
	7	6,3	4	224	1296
	8	6,3	8	292	2096
	9	6,3	7	446	3328
	10	6,3	9	350	2340
	11	6,3	7	476	3332
	12	6,3	7	371	1926
	13	8,0	42	209	8778
	14	8,0	5	416	2230
	15	8,0	7	232	1438
	16	8,0	20	304	6500
	17	8,0	7	173	1211
	18	8,0	7	242	1594
	19	8,0	24	210	2500
	20	8,0	42	214	8500
	21	8,0	4	228	696
	22	8,0	7	160	1316
	23	8,0	8	222	1776
	24	8,0	4	174	656
	25	8,0	4	225	900
	26	8,0	8	189	1512
	27	10,0	5	478	2300
	28	8,0	8	242	2096
	29	10,0	30	VAR	VAR
	30	10,0	5	178	690
	31	10,0	10	247	3100
	32	12,5	15	219	3678
	33	12,5	14	279	3850
	34	12,5	8	246	1950
	35	12,5	32	VAR	VAR
	36	16,0	8	200	2160
	37	16,0	5	245	1225
	38	16,0	10	332	3100

Resumo do aço

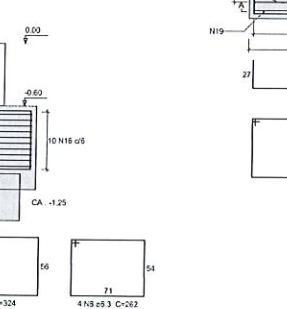
CAO	DIAM (mm)	C.TOTAL (kg)	PESO + 10% (kg)	Vol. (m³)
CA50	5,0	2309	2540	56,8
	6,3	476	524	12,0
	8,0	478	526	12,1
	10,0	154	169	3,8
	12,5	157	173	3,9
	16,0	64	70	1,6
	20,0	8	9	0,2
	25,0	8	9	0,2
	30,0	8	9	0,2
	35,0	8	9	0,2
	40,0	8	9	0,2
	45,0	8	9	0,2
	50,0	8	9	0,2
	55,0	8	9	0,2
	60,0	8	9	0,2
	65,0	8	9	0,2
	70,0	8	9	0,2
	75,0	8	9	0,2
	80,0	8	9	0,2
	85,0	8	9	0,2
	90,0	8	9	0,2
	95,0	8	9	0,2
	100,0	8	9	0,2
	105,0	8	9	0,2
	110,0	8	9	0,2
	115,0	8	9	0,2
	120,0	8	9	0,2
	125,0	8	9	0,2
	130,0	8	9	0,2
	135,0	8	9	0,2
	140,0	8	9	0,2
	145,0	8	9	0,2
	150,0	8	9	0,2
	155,0	8	9	0,2
	160,0	8	9	0,2
	165,0	8	9	0,2
	170,0	8	9	0,2
	175,0	8	9	0,2
	180,0	8	9	0,2
	185,0	8	9	0,2
	190,0	8	9	0,2
	195,0	8	9	0,2
	200,0	8	9	0,2
	205,0	8	9	0,2
	210,0	8	9	0,2
	215,0	8	9	0,2
	220,0	8	9	0,2
	225,0	8	9	0,2
	230,0	8	9	0,2
	235,0	8	9	0,2
	240,0	8	9	0,2
	245,0	8	9	0,2
	250,0	8	9	0,2
	255,0	8	9	0,2
	260,0	8	9	0,2
	265,0	8	9	0,2
	270,0	8	9	0,2
	275,0	8	9	0,2
	280,0	8	9	0,2
	285,0	8	9	0,2
	290,0	8	9	0,2
	295,0	8	9	0,2
	300,0	8	9	0,2
	305,0	8	9	0,2
	310,0	8	9	0,2
	315,0	8	9	0,2
	320,0	8	9	0,2
	325,0	8	9	0,2
	330,0	8	9	0,2
	335,0	8	9	0,2
	340,0	8	9	0,2
	345,0	8	9	0,2
	350,0	8	9	0,2
	355,0	8	9	0,2
	360,0	8	9	0,2
	365,0	8	9	0,2
	370,0	8	9	0,2
	375,0	8	9	0,2
	380,0	8	9	0,2
	385,0	8	9	0,2
	390,0	8	9	0,2
	395,0	8	9	0,2
	400,0	8	9	0,2
	405,0	8	9	0,2
	410,0	8	9	0,2
	415,0	8	9	0,2
	420,0	8	9	0,2
	425,0	8	9	0,2
	430,0	8	9	0,2
	435,0	8	9	0,2
	440,0	8	9	0,2
	445,0	8	9	0,2
	450,0	8	9	0,2
	455,0	8	9	0,2
	460,0	8	9	0,2
	465,0	8	9	0,2
	470,0	8	9	0,2
	475,0	8	9	0,2
	480,0	8	9	0,2
	485,0	8	9	0,2
	490,0	8	9	0,2
	495,0	8	9	0,2
	500,0	8	9	0,2
	505,0	8	9	0,2
	510,0	8	9	0,2
	515,0	8	9	0,2
	520,0	8	9	0,2
	525,0	8	9	0,2
	530,0	8	9	0,2
	535,0	8	9	0,2
	540,0	8	9	0,2
	545,0	8	9	0,2
	550,0	8	9	0,2
	555,0	8	9	0,2
	560,0	8	9	0,2
	565,0	8	9	0,2
	570,0	8	9	0,2
	575,0	8	9	0,2
	580,0	8	9	0,2
	585,0	8	9	0,2
	590,0	8	9	0,2
	595,0	8	9	0,2
	600,0	8	9	0,2
	605,0	8	9	0,2
	610,0	8	9	0,2
	615,0	8	9	0,2
	620,0	8	9	0,2
	625,0	8	9	0,2
	630,0	8	9	0,2
	635,0	8	9	0,2
	640,0	8	9	0,2
	645,0	8	9	0,2
	650,0	8	9	0,2
	655,0	8	9	0,2
	660,0	8	9	0,2
	665,0	8	9	0,2
	670,0	8	9	0,2
	675,0	8	9	0,2
	680,0	8	9	0,2
	685,0	8	9	0,2
	690,0	8	9	0,2
	695,0	8	9	0,2
	700,0	8	9	0,2
	705,0	8	9	0,2
	710,0	8	9	0,2
	715,0	8	9	0,2
	720,0	8	9	0,2
	725,0	8	9	0,2
	730,0	8	9	0,2
	735,0	8	9	0,2
	740,0	8	9	0,2
	745,0	8	9	0,2
	750,0	8	9	0,2
	755,0	8	9	0,2
	760,0	8	9	0,2
	765,0	8	9	0,2
	770,0	8	9	0,2
	775,0	8	9	0,2
	780,0	8	9	0,2
	785,0	8	9	0,2
	790,0	8	9	0,2
	795,0	8	9	0,2
	800,0	8	9	0,2
	805,0	8	9	0,2
	810,0	8	9	0,2
	815,0	8	9	0,2
	820,0	8	9	0,2
	825,0	8	9	0,2
	830,0	8	9	0,2
	835,0	8	9	0,2
	840,0	8	9	0,2
	845,0	8	9	0,2
	850,0	8	9	0,2
	855,0	8	9	0,2
	860,0	8	9	0,2
	865,0	8	9	0,2
	870,0	8	9	0,2
	875,0	8	9	0,2
	880,0	8	9	0,2
	885,0	8	9	0,2
	890,0	8	9	0,2
	895,0	8	9	0,2
	900,0	8	9	0,2
	905,0	8	9	0,2
	910,0	8	9	0,2
	915,0	8	9	0,2
	920,0	8	9	0,2
	925,0	8	9	0,2
	930,0	8	9	0,2
	935,0	8	9	0,2
	940,0	8	9	0,2
	945,0	8	9	0,2
	950,0	8	9	0,2
	955,0	8	9	0,2
	960,0	8	9	0,2
	965,0	8	9	0,2
	970,0	8	9	0,2
	975,0	8	9	0,2
	980,0	8	9	0,2
	985,0	8	9	0,2
	990,0	8	9	0,2
	995,0	8	9	0,2
	1000,0	8	9	0,2

Vol. de concreto (C-30) = 14,65 m³  
Área da forma = 55,59 m²

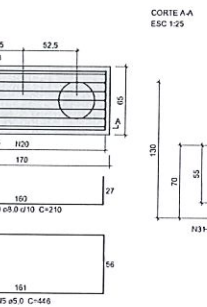
**B99 (existente, manter e chumbar esperas especificadas)**  
B100, B101 (executar)  
1x2C35



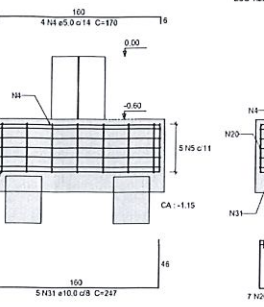
**CORTE A-A**  
ESC 1:25



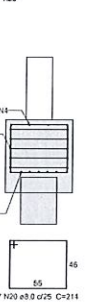
**B44-45 (executar)**  
2x2C35  
PLANTA  
ESC 1:25



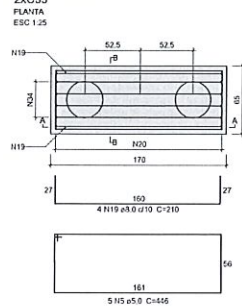
**CORTE A-A**  
ESC 1:25



**CORTE B-B**  
ESC 1:25



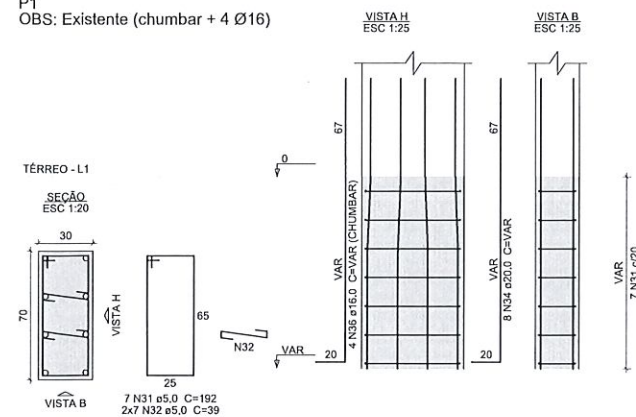
**B30-31 (executar)**  
2x2C35  
PLANTA  
ESC 1:25



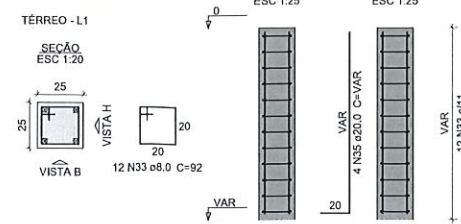
**CORTE A-A**  
ESC 1:25



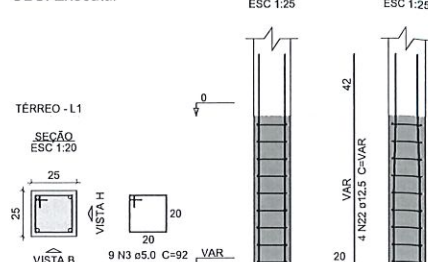
P1  
OBS: Existente (chumbar + 4 Ø16)



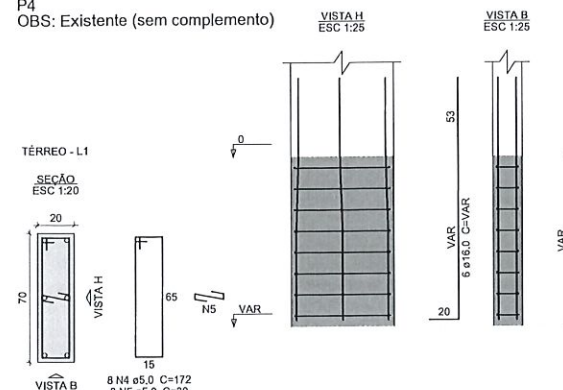
P2  
OBS: Executar



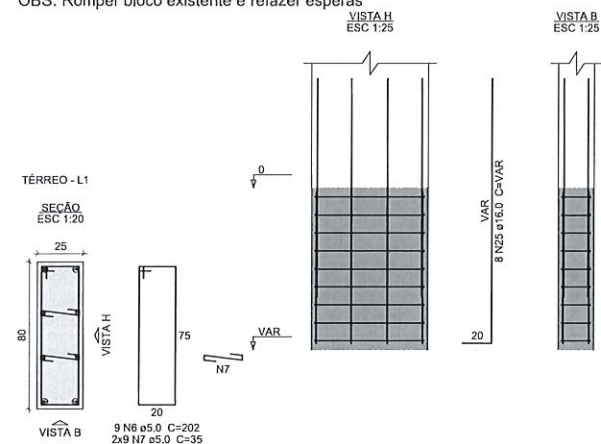
P3  
OBS: Executar



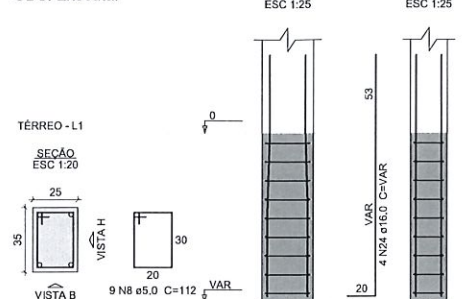
P4  
OBS: Existente (sem complemento)



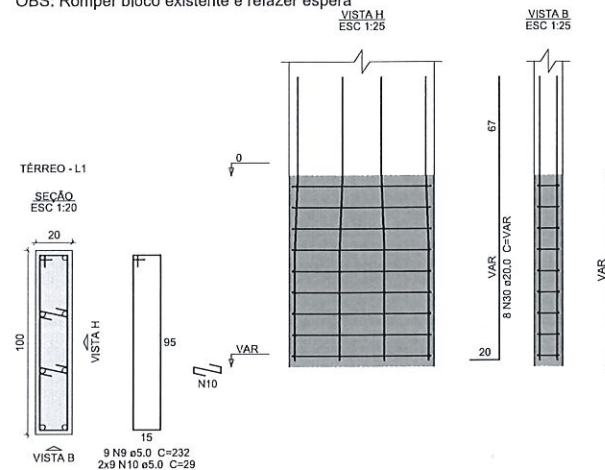
P5  
OBS: Romper bloco existente e refazer esperas



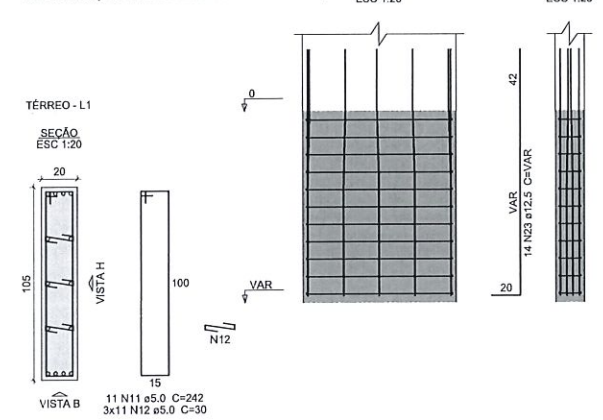
P6=P123  
OBS: Executar



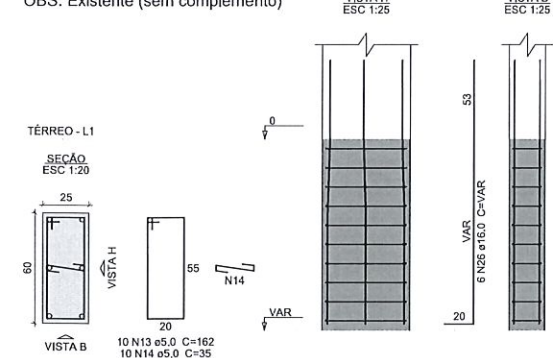
P7  
OBS: Romper bloco existente e refazer espera



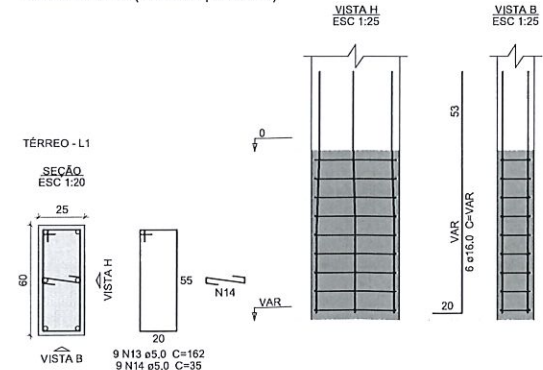
P8  
OBS: Romper bloco existente e refazer espera



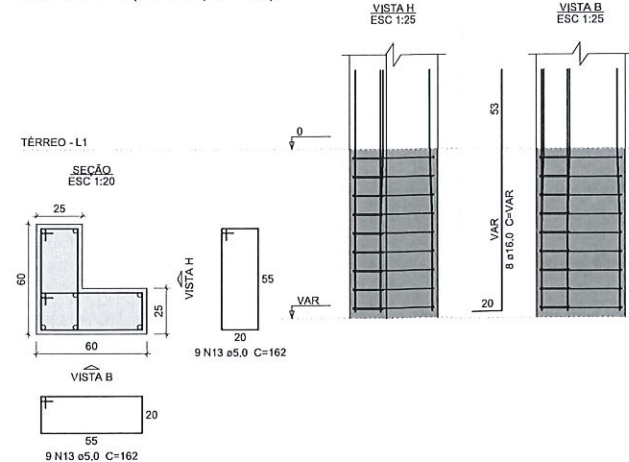
P9=P124  
OBS: Existente (sem complemento)



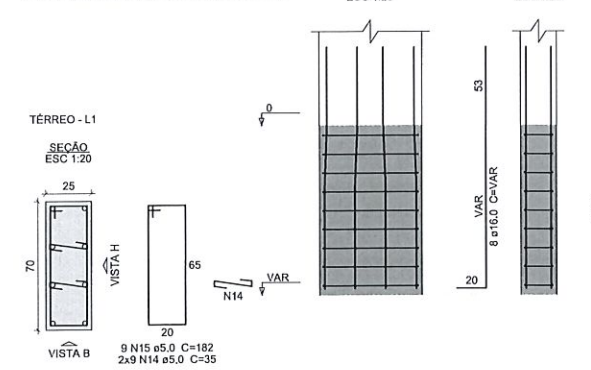
P10=P19=P125  
OBS: Existente (sem complemento)



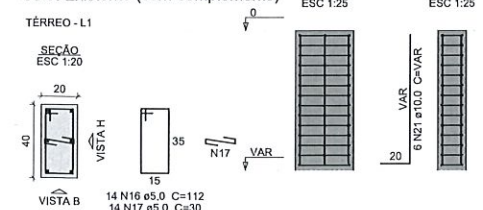
P11=P13=P126=P128  
OBS: Existente (sem complemento)



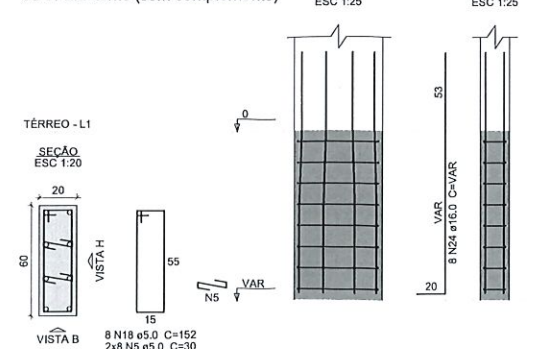
P12  
OBS: Existente (sem complemento)



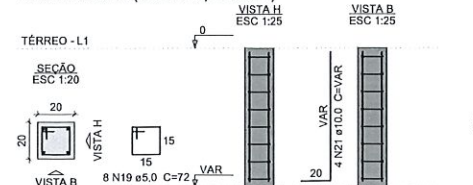
P14  
OBS: Existente (sem complemento)



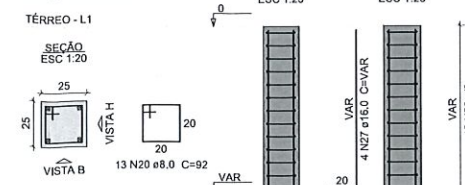
P15  
OBS: Existente (sem complemento)



P17=P34=P54=P86  
OBS: Existente (sem complemento)



P18  
OBS: Executar



Relação do aço

CAÇO	N	DIAM (mm)	QUANT	C.UNIT (cm)	C.TOTAL (cm)
CA60	3	5.0	9	92	828
	4	5.0	0	172	0
	5	5.0	0	30	0
	6	5.0	9	202	1818
	7	5.0	18	35	630
	8	5.0	18	112	2016
	9	5.0	9	232	2088
	10	5.0	18	29	522
	11	5.0	11	242	2662
	12	5.0	33	30	990
	13	5.0	0	162	0
	14	5.0	0	35	0
	15	5.0	0	182	0
	16	5.0	0	112	0
	17	5.0	0	30	0
	18	5.0	0	152	0
	31	5.0	7	192	1344
	32	5.0	14	39	546
CA50	20	8.0	25	92	2300
	21	10.0	0	VAR	VAR
	22	12.5	4	VAR	VAR
	23	12.5	14	VAR	VAR
	25	16.0	8	VAR	VAR
	24	16.0	8	VAR	VAR
	26	16.0	0	VAR	VAR
	27	16.0	4	VAR	VAR
	36	16.0	4	VAR	VAR
	30	20.0	8	VAR	VAR
	35	20.0	4	VAR	VAR

Resumo do aço

AÇO	DIAM (mm)	C.TOTAL (m)	PESO + 10% (kg)
CA50	8.0	23	10
	10.0	0	0
	12.5	32.3	34.2
	16.0	43.4	75.3
	20.0	22.1	59.8
CA60	5.0	134.5	22.8
<b>PESO TOTAL (kg)</b>			
CA50		179.3	
CA60		22.8	

Volume de concreto (C-30) = 1,17 m³  
Área de forma = 14,94 m²

Nº	Comentário	Data	Autor
0	Emissão inicial		
1	Definição de esperas executadas e a executar e complemento de armadura de esperas	18/09/2021	André M. Canan
2	Mudança no status das esperas dos pilares 9 e 124	21/09/2021	André M. Canan

**ALGETEC**  
ENGENHARIA E CONSTRUÇÃO

**ALGETEC ENGENHARIA E CONSTRUÇÃO**  
Rua João Pessoa, 880 - sl B - Santa Terezinha  
Pato Branco/PR  
46.99102-2782  
www.algetec.eng.br

PROJETO ESTRUTURAL

Proprietário: Município de Pato Branco - PR

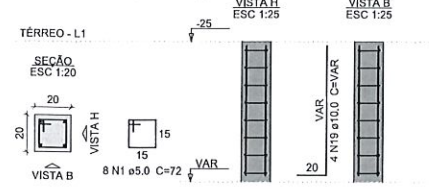
Eng. Civil: Daniel Parçagueira, CREA: 072044/D  
Eng. Civil: André Mateus Canan, CREA: 19378/D  
Eng. Civil: Loriane C. Parcianello, CREA: 172335/D

End:	Rua Jacireti	Data:	12/07/2021
Origem:	Teatro Municipal Naura Rigon	Finalidade:	Indicada
Referência:	Pavimento: Térreo Pilares 1		

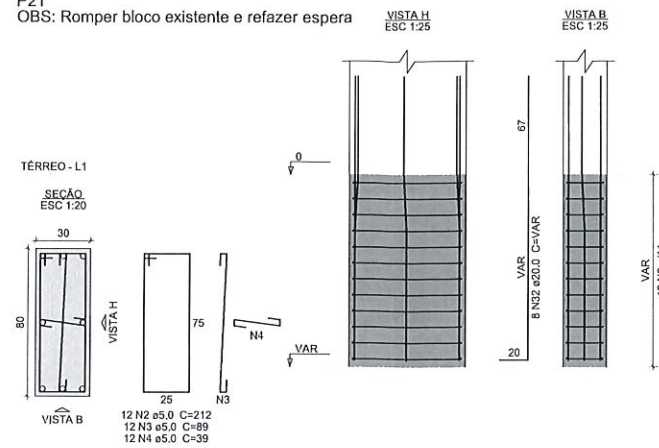
19  
93



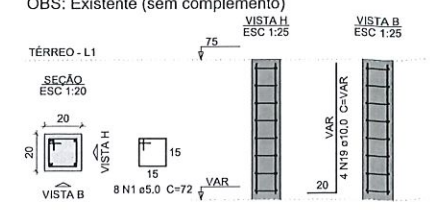
P20=P43=P83  
OBS: Existente (sem complemento)



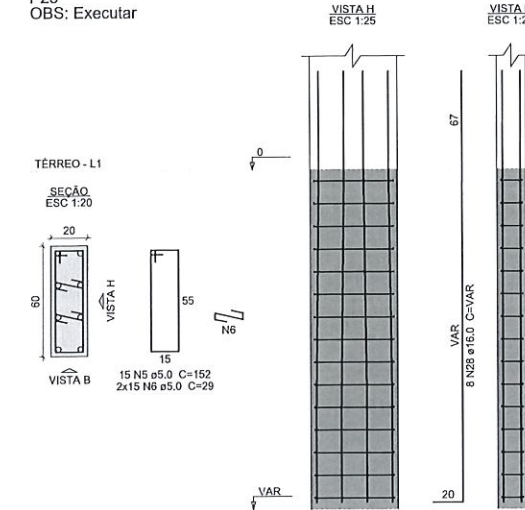
P21  
OBS: Romper bloco existente e refazer espera



P22=P23=P24=P50=P51=P52=  
=P70=P71=P72=P87=P88=P104=  
=P105=P106  
OBS: Existente (sem complemento)



P25  
OBS: Executar



Relação do aço

CAÇO	N	DIAM (mm)	QUANT	C.UNIT (cm)	C.TOTAL (cm)
CA60	2	5.0	12	212	2544
	3	5.0	12	89	1068
	4	5.0	12	39	468
	5	5.0	15	152	2280
	6	5.0	30	29	870
	7	5.0	0	132	0
	8	5.0	0	30	0
	9	5.0	54	92	4968
	10	5.0	7	162	1134
	11	5.0	14	49	686
	12	5.0	43	100	4300
	13	5.0	43	24	1032
CA50	14	5.0	8	212	1696
	15	5.0	16	30	480
	16	6.3	19	300	5700
	17	6.3	76	25	1900
	18	8.0	9	72	648
	21	10.0	4	VAR	VAR
	23	10.0	18	VAR	VAR
	24	10.0	6	VAR	VAR
	25	12.5	12	VAR	VAR
	26	12.5	0	VAR	VAR
	27	12.5	16	VAR	VAR
	28	16.0	8	VAR	VAR
	29	16.0	12	VAR	VAR
	30	16.0	4	VAR	VAR
	33	16.0	4	VAR	VAR
	31	16.0	8	VAR	VAR
	32	20.0	8	VAR	VAR

Resumo do aço

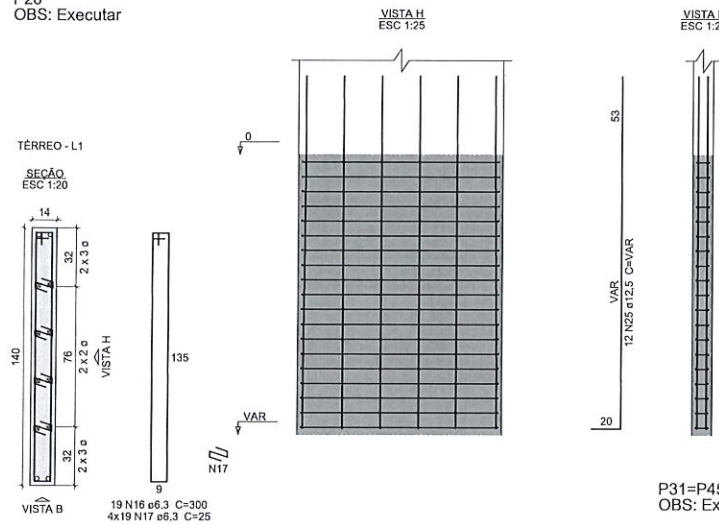
CAÇO	DIAM (mm)	C.TOTAL (m)	PESO + 10% (kg)
CA50	6.3	76	20.5
	8.0	6.5	2.8
	10.0	38.3	26
	12.5	54	57.1
	16.0	71.9	124.7
20.0	16.6	44.9	
CA60	5.0	215.3	36.5

PESO TOTAL (kg)

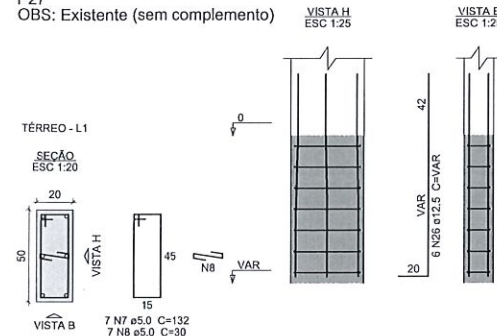
CA50	278
CA60	36.5

Volume de concreto (C-30) = 1,96 m³  
Área de forma = 28,65 m²

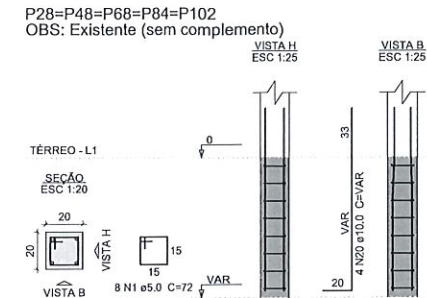
P26  
OBS: Executar



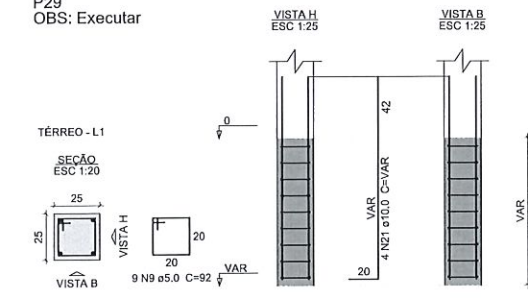
P27  
OBS: Existente (sem complemento)



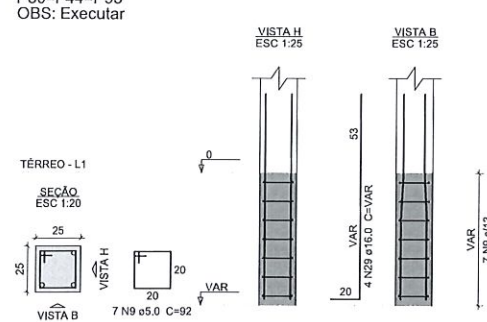
P28=P48=P68=P84=P102  
OBS: Existente (sem complemento)



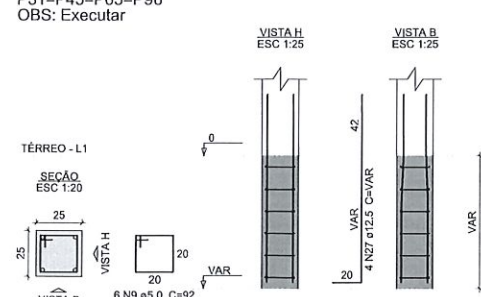
P29  
OBS: Executar



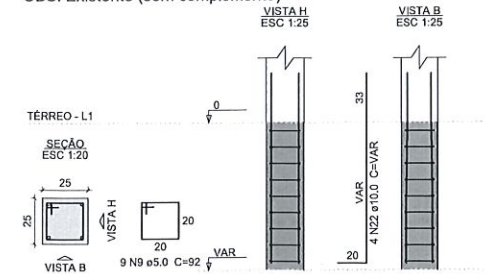
P30=P44=P95  
OBS: Executar



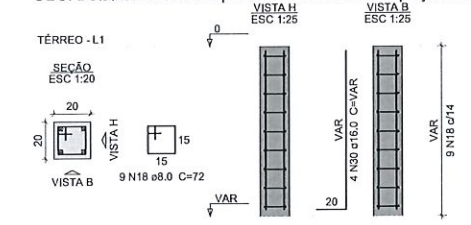
P31=P45=P65=P96  
OBS: Executar



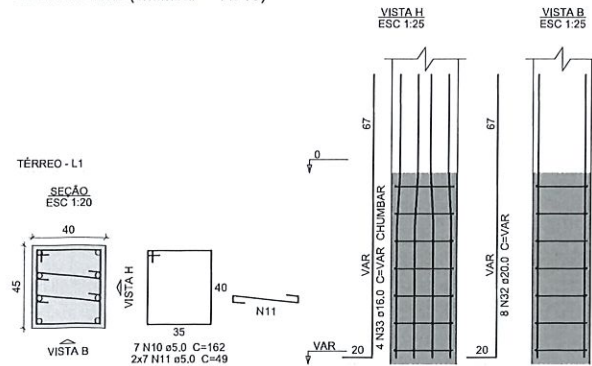
P32=P46=P66=P81  
OBS: Existente (sem complemento)



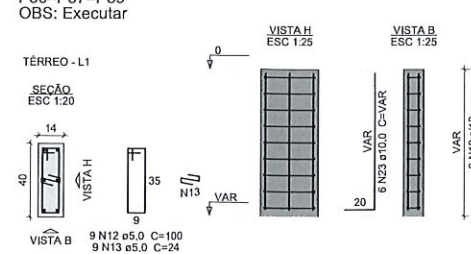
P33  
OBS: Detalhamento de espera não encontrado no projeto antigo



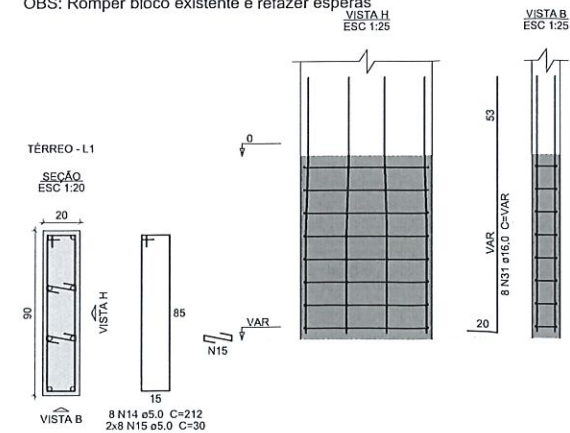
P35  
OBS: Existente (chumbar + 4 Ø16)



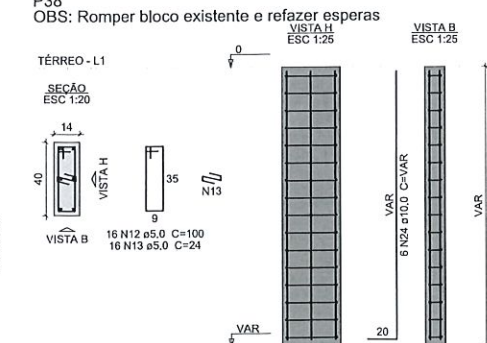
P36=P57=P89  
OBS: Executar



P37  
OBS: Romper bloco existente e refazer esperas



P38  
OBS: Romper bloco existente e refazer esperas



Nº	Comentário	Data	Autor
0	Emissão Inicial		
1	Definição de esperas executadas e a executar e complemento de armadura de esperas	16/08/2021	André M. Canan

**ALGETEC ENGENHARIA E CONSTRUÇÃO**  
Rua João Pessoa, 880 - sl B - Santa Terezinha  
Pato Branco/PR  
46. 99102 2782  
www.algetec.eng.br

Proprietário: Município de Pato Branco - PR  
Eng. Civil Daniel Parcianello, CREA: 072040/D  
Eng. Civil André Mateus Canan, CREA: 193875/D  
Eng. Civil Loriane C. Parcianello, CREA: 172355/D

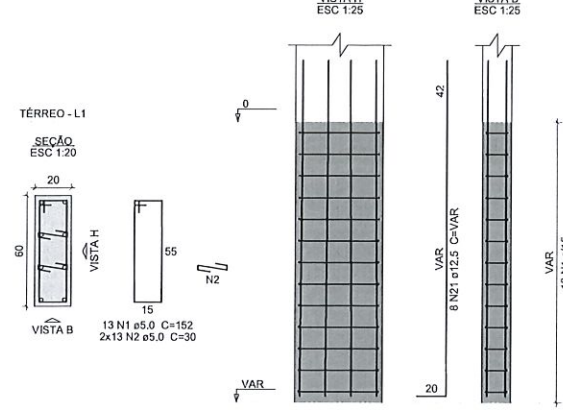
Encl: Rua Jacirelá, Pato Branco/PR, Data: 12/07/2021  
Cora: Teatro Municipal Naura Rigon, Escala: Indcada  
Referência: Pavimento: Térreo, Pilares 2

**20**  
**93**

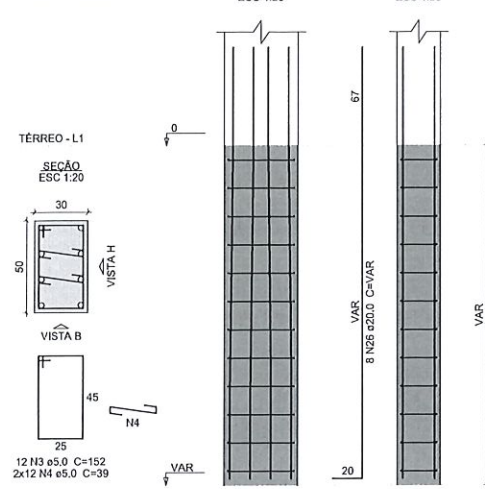


P39

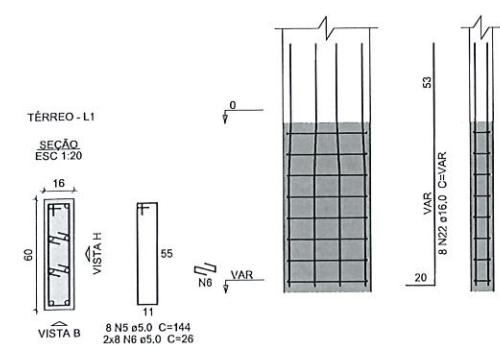
OBS: Romper bloco existente e refazer esperas



P40  
OBS: Executar



P41  
OBS: Executar

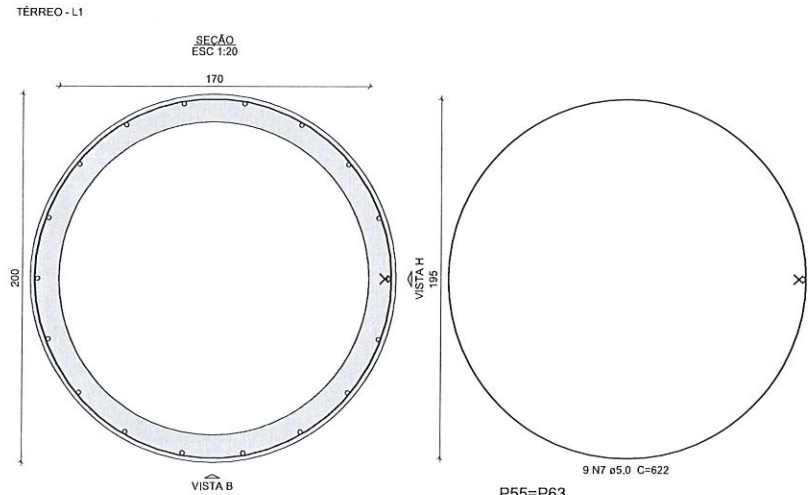


Relação do aço

AÇO	N	DIAM (mm)	QUANT	C.UNIT (cm)	C.TOTAL (cm)
CA60	1	5.0	19	152	2888
	2	5.0	28	30	780
	3	5.0	12	152	1824
	4	5.0	31	39	1209
	5	5.0	14	144	2016
	6	5.0	28	26	728
	9	5.0	8	82	656
	10	5.0	8	25	200
	8	5.0	16	92	1472
	11	5.0	8	132	1056
	12	5.0	8	30	240
	13	5.0	12	30	360
	14	5.0	7	132	924
	15	5.0	8	182	1456
	16	5.0	16	35	560
	28	5.0	7	132	924
	29	5.0	7	30	210
	17	6.3	7	72	504
	19	10.0	12	VAR	VAR
	20	10.0	8	VAR	VAR
	30	10.0	4	VAR	VAR
	21	12.5	8	VAR	VAR
	22	16.0	8	VAR	VAR
	24	18.0	4	VAR	VAR
	23	18.0	16	VAR	VAR
	25	16.0	8	VAR	VAR
	26	20.0	8	VAR	VAR
	27	20.0	6	VAR	VAR

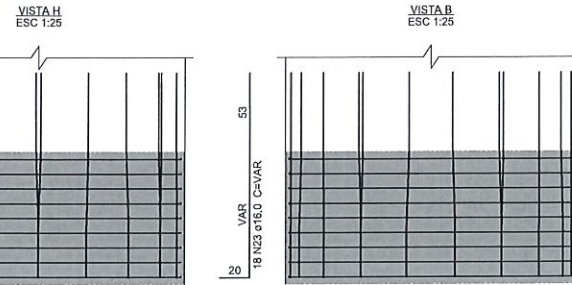
P42

OBS: Existente (sem complemento)



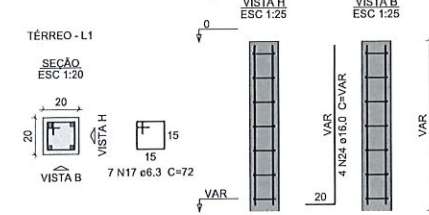
P47

OBS: Detalhamento de espera não encontrado no projeto antigo



P49=P69=P85

OBS: Existente (sem complemento)



Resumo do aço

AÇO	DIAM (mm)	C.TOTAL (m)	PESO + 10% (kg)
CA50	6.3	5.1	1.4
	10.0	29.8	20.2
	12.5	19.6	20.8
	16.0	60.5	105.1
	20.0	37	100.3
CA60	5.0	175.1	29.7

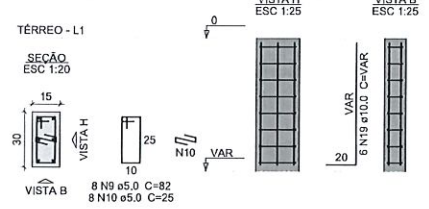
PESO TOTAL (kg)

CA50 247.7

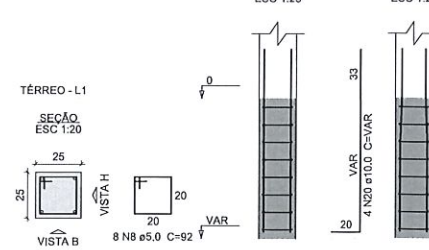
CA60 29.7

Volume de concreto (C-30) = 1.52 m³  
Área de forma = 20.23 m²

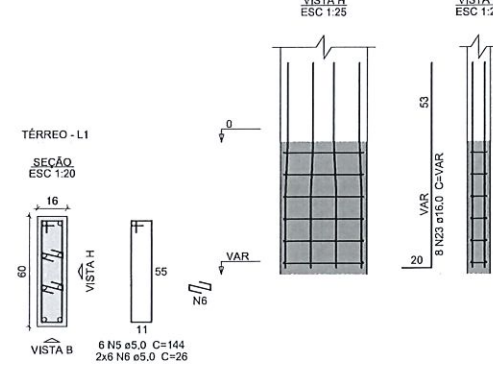
P53  
OBS: Romper bloco existente e refazer espera



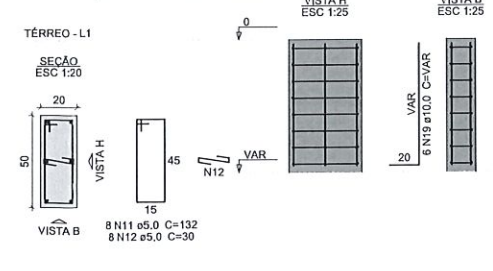
P55=P63  
OBS: Executar



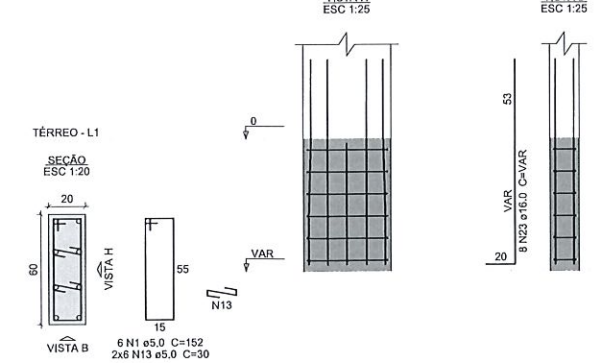
P56  
OBS: Romper bloco existente e refazer espera



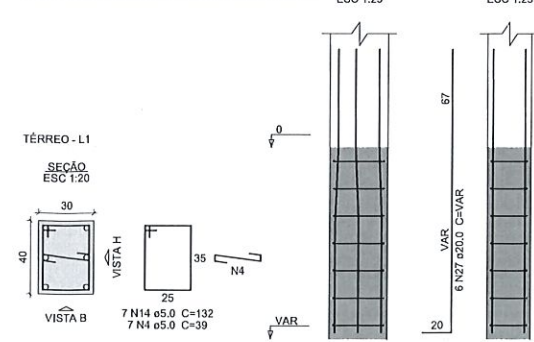
P58  
OBS: Romper bloco existente e refazer espera



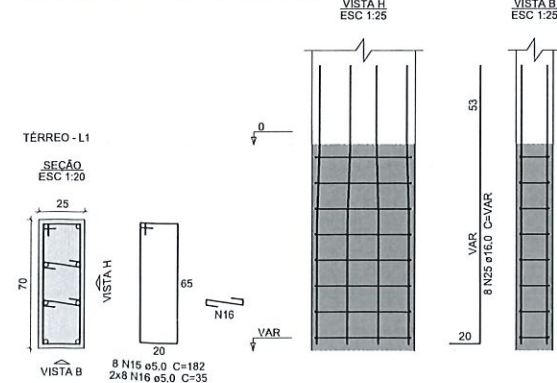
P59  
OBS: Romper bloco existente e refazer espera



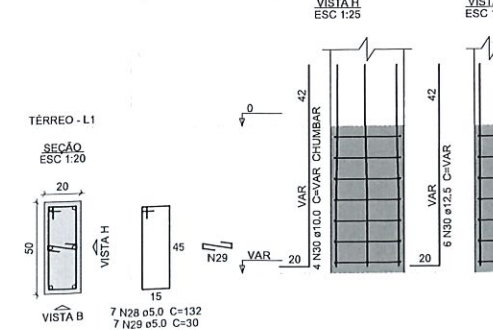
P60  
OBS: Bloco existente (chumbar esperas)



P61  
OBS: Romper bloco existente e refazer esperas



P62  
OBS: Existente (chumbar + 4 Ø10)



Nº	Comentário	Data	Autor
0	Emissão inicial		
1	Definição de esperas executadas e a executar e complemento de armadura de esperas	18/08/2021	André M. Canan

**ALGETEC ENGENHARIA E CONSTRUÇÃO**  
Rua João Pessoa, 880 - sl B - Santa Terezinha  
Pato Branco/PR  
46. 99102 2782  
www.algetec.eng.br

PROJETO ESTRUTURAL

Proprietário: Município de Pato Branco - PR

Eng. Civil Daniel Parcianelo, CREA: 072040/D  
Eng. Civil André Mateus Canan, CREA: 193875/D  
Eng. Civil Loriane C. Parcianelo, CREA: 172355/D

Rua Jacirê  
Pato Branco/PR

12/07/2021

Indicada

Pavimento: Térreo  
Pilares 3

21

93



Relação do aço

ACO	N	DIAM (mm)	QUANT	C.UNIT (cm)	C.TOTAL (cm)
CA60	1	5.0	40	92	3680
	2	5.0	12	72	864
	3	5.0	14	162	2268
	4	5.0	28	49	1372
	5	5.0	14	132	1848
	6	5.0	14	39	546
	7	5.0	8	152	1216
	8	5.0	15	30	450
	9	5.0	0	144	0
	10	5.0	0	26	0
	11	5.0	14	132	1848
	12	5.0	7	30	210
	13	5.0	7	40	280
	14	5.0	5	192	960
	15	5.0	10	40	400
	16	5.0	0	30	0
	17	5.0	0	172	0
	18	5.0	7	142	994
CA50	19	6.3	9	72	648
	20	8.0	13	72	936
	21	10.0	4	VAR	VAR
	22	10.0	4	VAR	VAR
	23	10.0	2	VAR	VAR
	24	12.5	8	VAR	VAR
	25	12.5	12	VAR	VAR
	26	12.5	4	VAR	VAR
	27	12.5	4	VAR	VAR
	28	16.0	4	VAR	VAR
	29	16.0	14	VAR	VAR
	30	16.0	4	VAR	VAR
	31	16.0	8	VAR	VAR
	32	16.0	0	VAR	VAR
	33	16.0	4	VAR	VAR
	34	20.0	8	VAR	VAR
	35	20.0	16	VAR	VAR

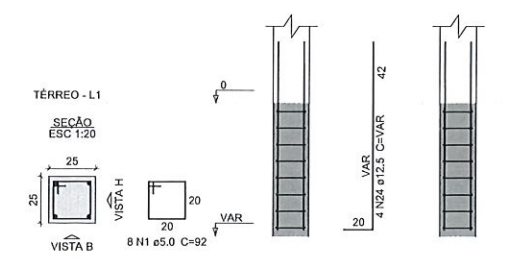
Resumo do aço

ACO	DIAM (mm)	C.TOTAL (m)	PESO + 10% (kg)
CA50	6.3	6.5	1.7
	8.0	9.4	4.1
	10.0	14.6	9.9
	12.5	43.4	46
	16.0	54.6	94.7
	20.0	50.1	135.9
CA60	5.0	169.4	28.7

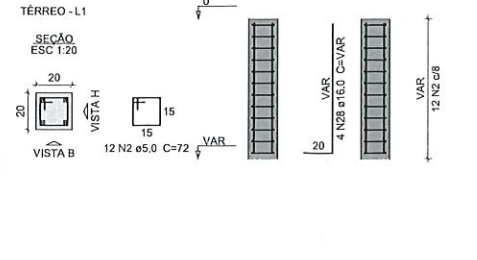
ACO	PESO TOTAL (kg)
CA50	292.2
CA60	28.7

Volume de concreto (C-30) = 1,8 m³  
Área de forma = 22,61 m²

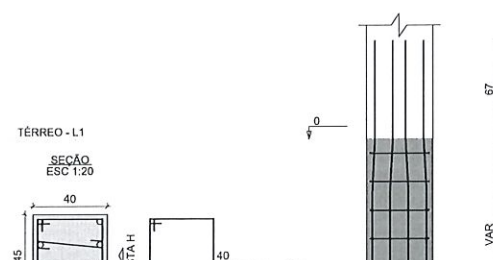
P64  
OBS: Executar



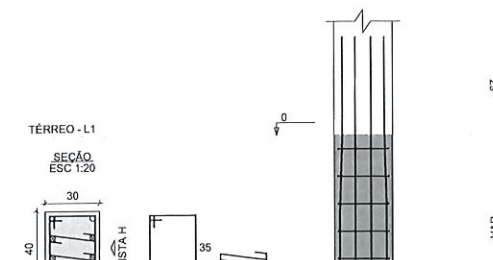
P67  
OBS: Detalhamento de esperas não encontrado no projeto antigo



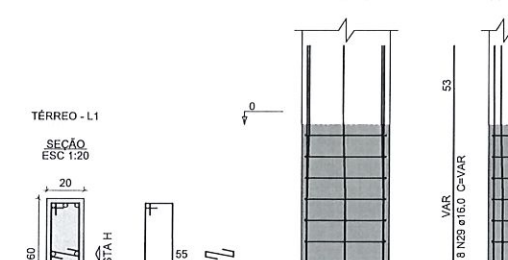
P73  
OBS: Romper bloco e refazer esperas



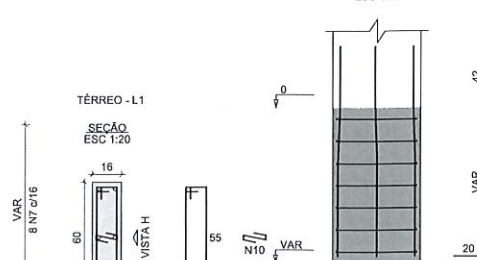
P74  
OBS: Romper o bloco existente e refazer esperas



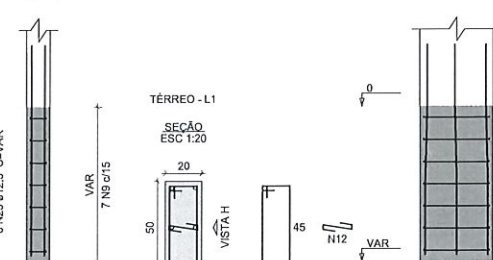
P75  
OBS: Romper bloco existente e refazer esperas



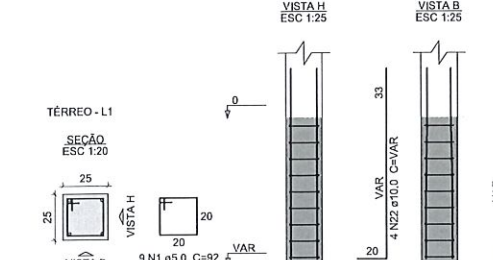
P76  
OBS: Existente (sem complemento)



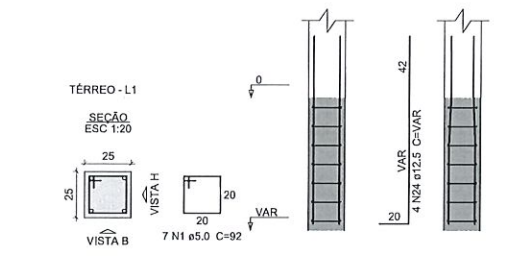
P77  
OBS: Executar



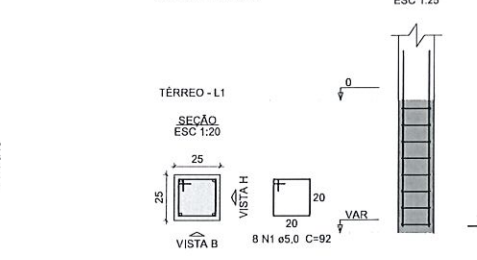
P78  
OBS: Executar



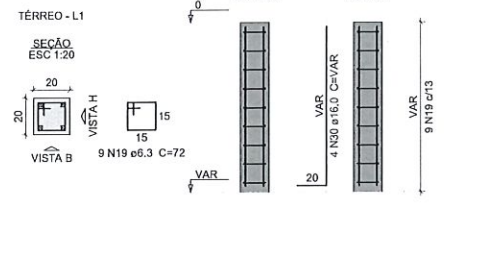
P79  
OBS: Executar



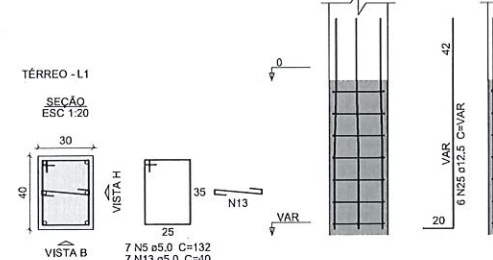
P80  
OBS: Executar



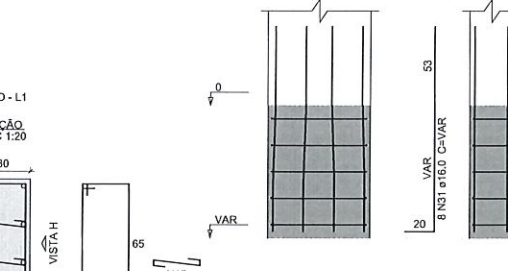
P82  
OBS: Detalhamento de esperas não encontrado no projeto antigo



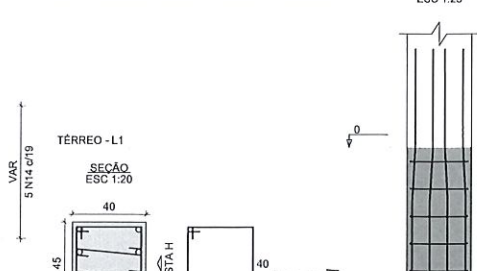
P90  
OBS: Bloco existente (chumbar esperas)



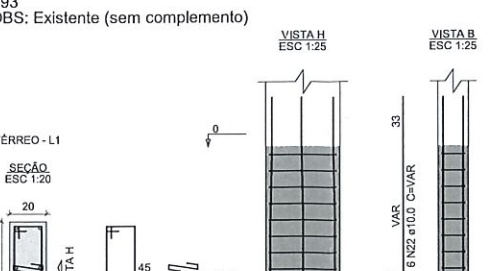
P91  
OBS: Executar



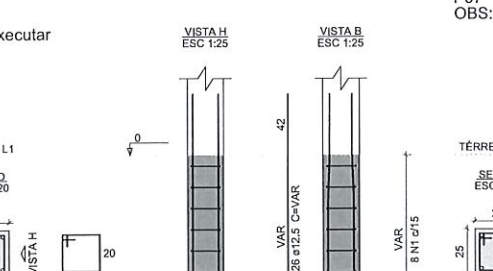
P92  
OBS: Romper bloco e refazer esperas



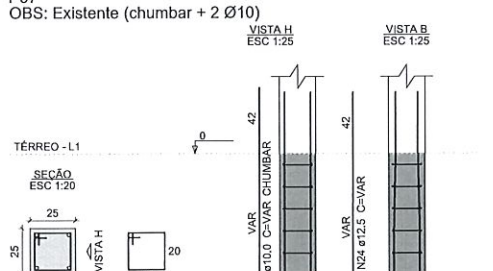
P93  
OBS: Existente (sem complemento)



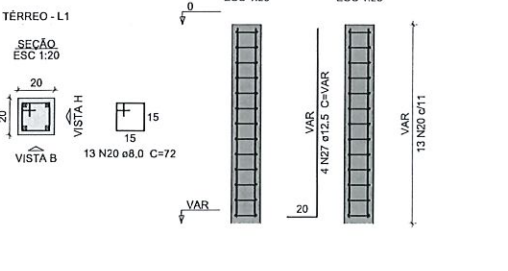
P94  
OBS: Executar



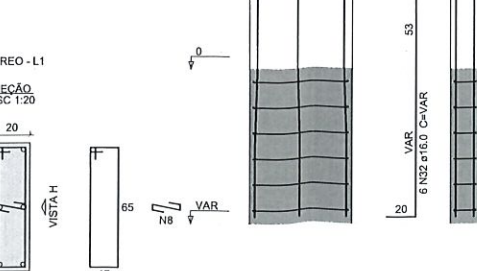
P97  
OBS: Existente (chumbar + 2 Ø10)



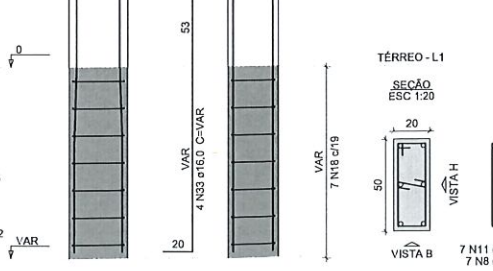
P98  
OBS: Detalhamento das esperas não encontrado no projeto antigo



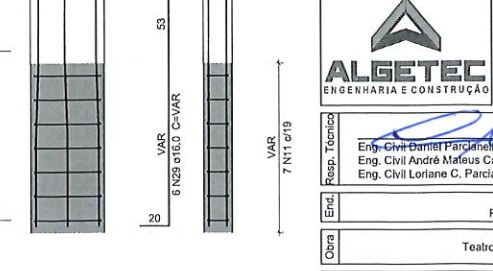
P99  
OBS: Existente (sem complemento)



P100  
OBS: Executar



P101  
OBS: Executar



Nº	Comentário	Data	Autor
0	Emissão inicial		
1	Definição de esperas executadas e a executar e complemento de armadura de esperas	18/08/2021	André M. Canan

**ALGETEC ENGENHARIA E CONSTRUÇÃO**  
Rua João Pessoa, 880 - sl B - Santa Terezinha  
Pato Branco/PR  
46. 99102 2782  
www.algetec.eng.br

PROJETO ESTRUTURAL

Município de Pato Branco - PR

Eng. Civil Danilo Parizinho, CREA: 072040/D  
Eng. Civil André Mafusa Canan, CREA: 193875/D  
Eng. Civil Loriane C. Parcianneto, CREA: 172355/D

Rua Jacirelá  
Pato Branco/PR

12/07/2021

Indicada

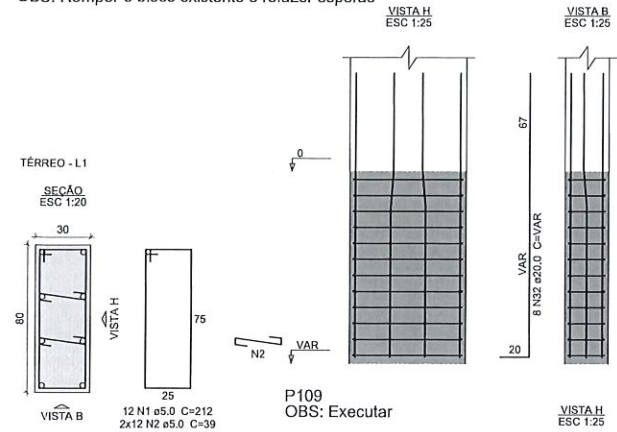
22

93

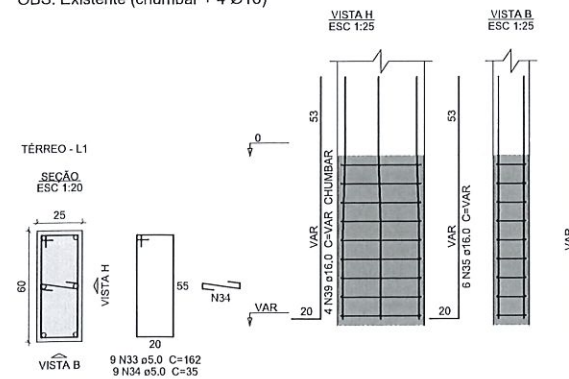
Referência: Pavimento: Térreo  
Pilares 4



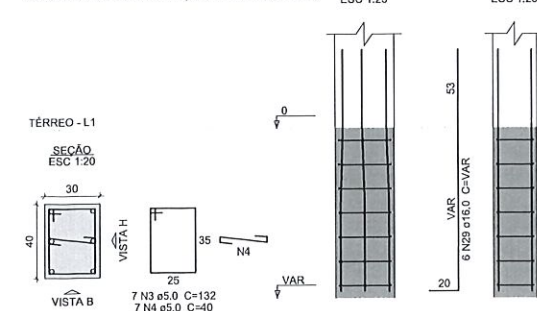
P103  
OBS: Romper o bloco existente e refazer esperas



P107  
OBS: Existente (chumbar + 4 Ø16)



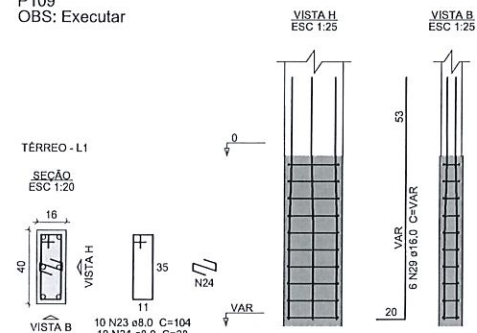
P108  
OBS: Bloco Existente (chumbar esperas)



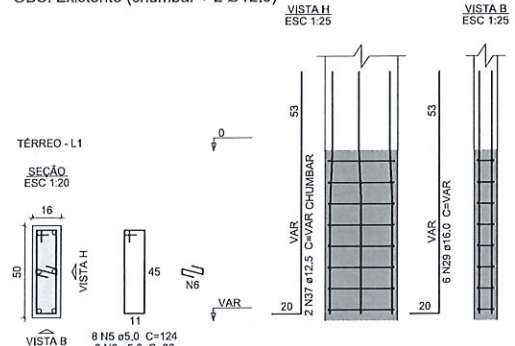
Relação do aço

ACO	N	DIAM (mm)	QUANT	C.UNIT (cm)	C.TOTAL (cm)
CA60	1	5.0	12	212	2544
	2	5.0	24	39	936
	3	5.0	7	132	924
	4	5.0	7	40	280
	5	5.0	8	124	992
	6	5.0	8	28	208
	7	5.0	16	80	1280
	8	5.0	7	152	1064
	9	5.0	21	30	630
	10	5.0	18	72	1296
	11	5.0	7	24	168
	12	5.0	0	182	0
	13	5.0	0	35	0
	14	5.0	7	132	924
	15	5.0	0	26	0
	16	5.0	10	252	2520
	17	5.0	30	30	900
	33	5.0	9	162	1458
	34	5.0	9	35	315
CA50	19	6.3	15	242	3630
	20	6.3	30	33	990
	21	6.3	7	182	1274
	22	6.3	14	38	532
	35	6.3	10	182	1820
	36	6.3	20	38	760
	23	8.0	10	104	1040
	24	8.0	10	28	280
	25	10.0	12	VAR	VAR
	26	10.0	6	VAR	VAR
	37	12.5	2	VAR	VAR
	27	12.5	0	VAR	VAR
	38	12.5	4	VAR	VAR
	28	12.5	12	VAR	VAR
	29	15.0	12	VAR	VAR
	39	16.0	8	VAR	VAR
	40	16.0	4	VAR	VAR
	32	20.0	16	VAR	VAR

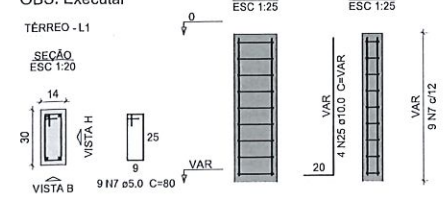
P109  
OBS: Executar



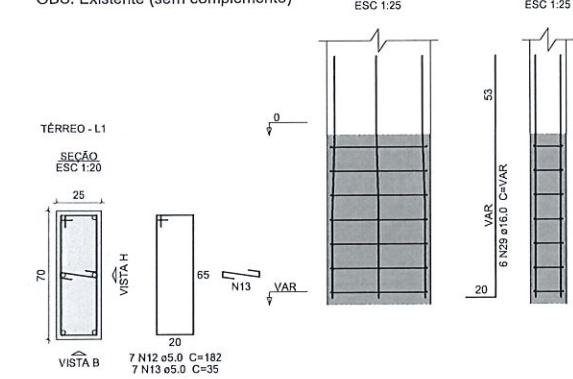
P110  
OBS: Existente (chumbar + 2 Ø12.5)



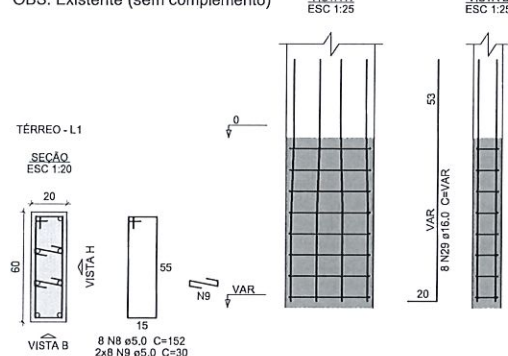
P111  
OBS: Executar



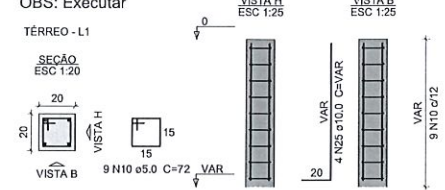
P116  
OBS: Existente (sem complemento)



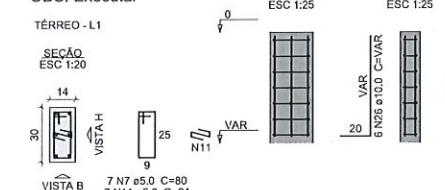
P112  
OBS: Existente (sem complemento)



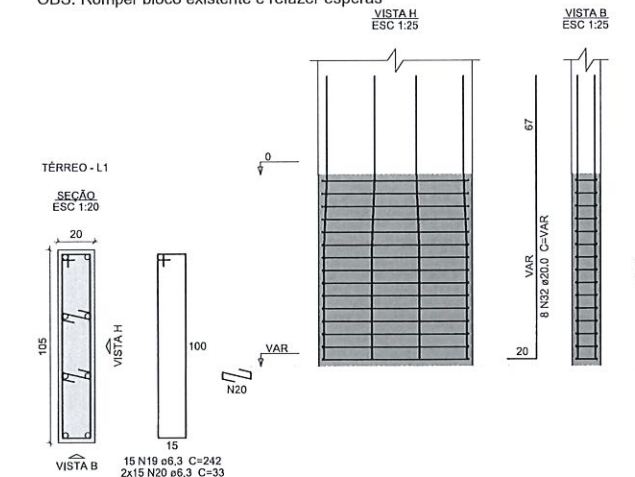
P113=P115  
OBS: Executar



P114  
OBS: Executar



P120  
OBS: Romper bloco existente e refazer esperas

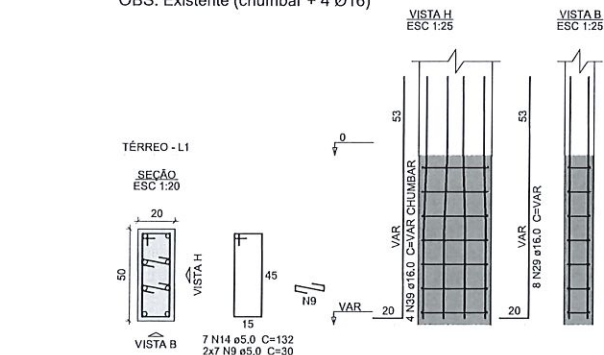


Resumo do aço

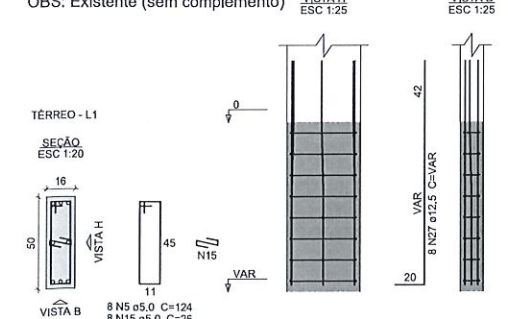
ACO	DIAM (mm)	C.TOTAL (m)	PESO + 10 % (kg)
CA50	6.3	90.1	24.2
	8.0	13.2	5.7
	10.0	18.5	12.5
	12.5	33.7	35.7
	16.0	62.1	107.7
	20.0	33.2	89.8
CA60	5.0	164.4	27.9
PESO TOTAL (kg)			
CA50		275.7	
CA60		27.9	

Volume de concreto (C=30) = 1.47 m³  
Área de forma = 18.09 m²

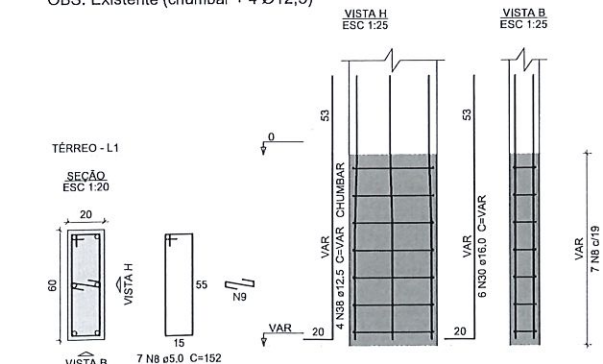
P117  
OBS: Existente (chumbar + 4 Ø16)



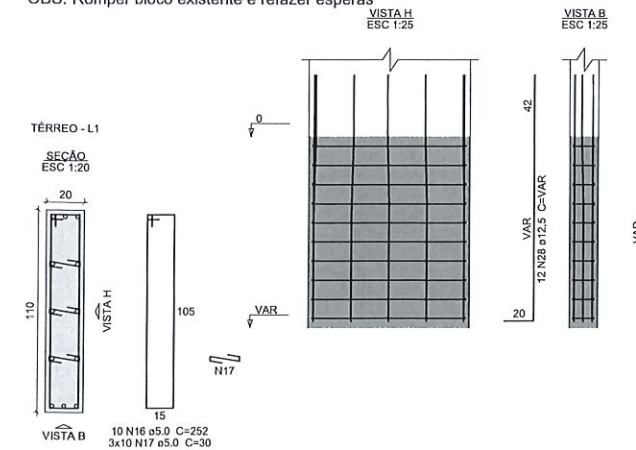
P118  
OBS: Existente (sem complemento)



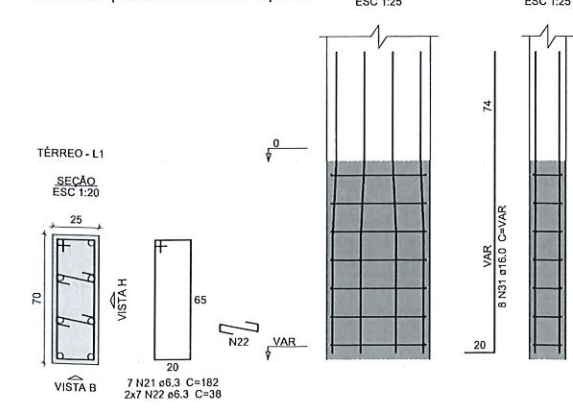
P119  
OBS: Existente (chumbar + 4 Ø12.5)



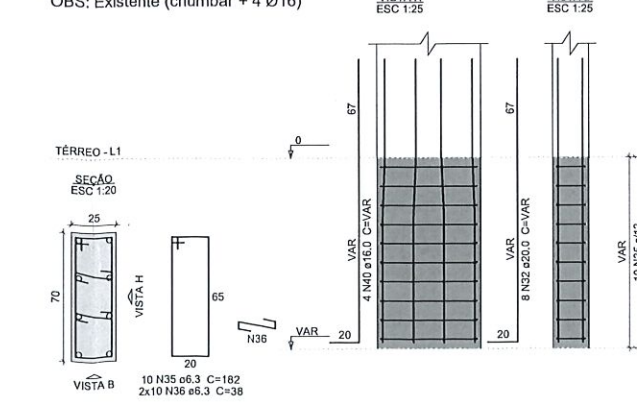
P121  
OBS: Romper bloco existente e refazer esperas



P122  
OBS: Romper bloco e refazer esperas



P127  
OBS: Existente (chumbar + 4 Ø16)



Nº	Comentário	Data	Autor
0	Emissão inicial		
1	Definição de esperas executadas e a executar e complemento de armadura de esperas	18/08/2021	André M. Canan

**ALGETEC ENGENHARIA E CONSTRUÇÃO**  
Rua João Pessoa, 880 - sl B - Santa Terezinha  
Pato Branco/PR  
46. 99102-2782  
www.algetec.eng.br

PROJETO ESTRUTURAL

Eng. Civil Daniel Parciánello, CREA: 072040/D  
Eng. Civil André Mateus Canan, CREA: 193879/D  
Eng. Civil Loriane C. Parciánello, CREA: 172359/D

Município de Pato Branco - PR

Rua Jaciretã  
Pato Branco/PR

12/07/2021

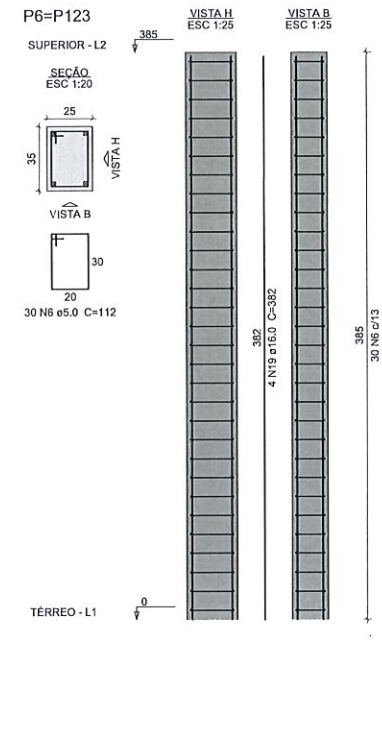
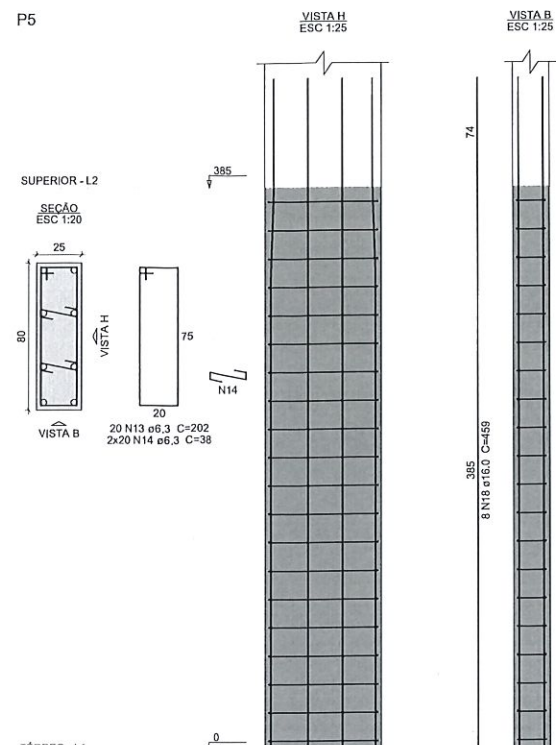
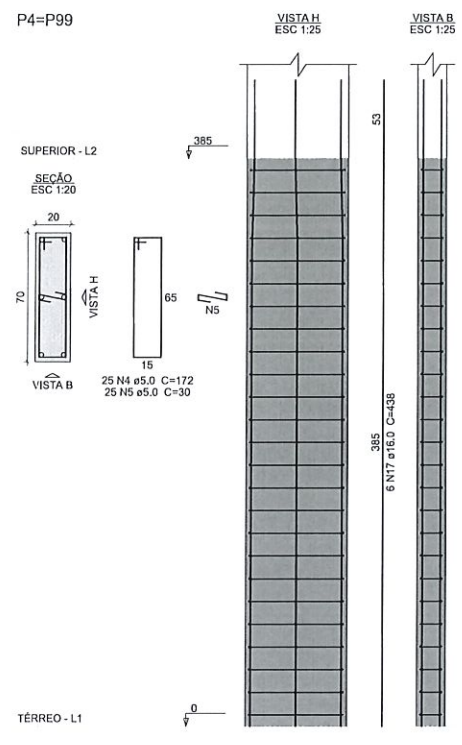
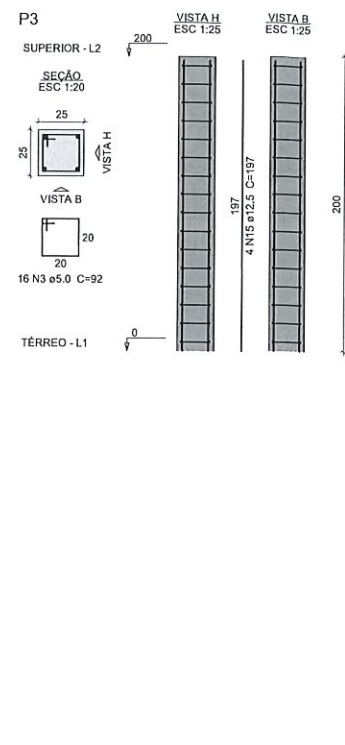
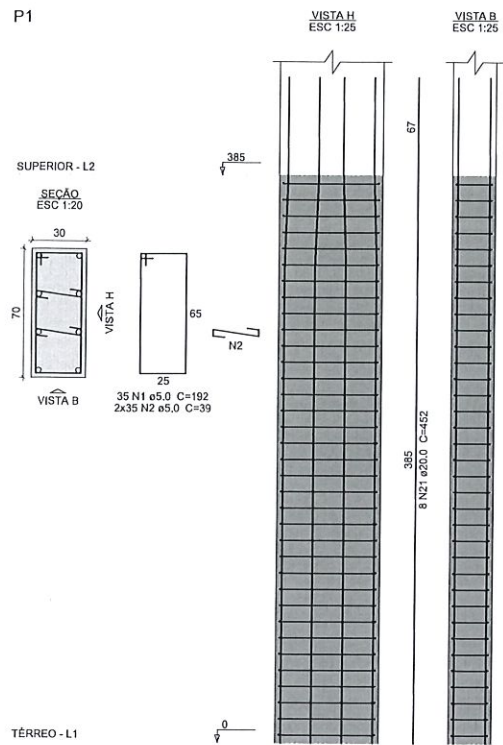
Teatro Municipal Naura Rigon

Indicada

Referência: Pavimento: Térreo  
Pilares 5

**23**  
93





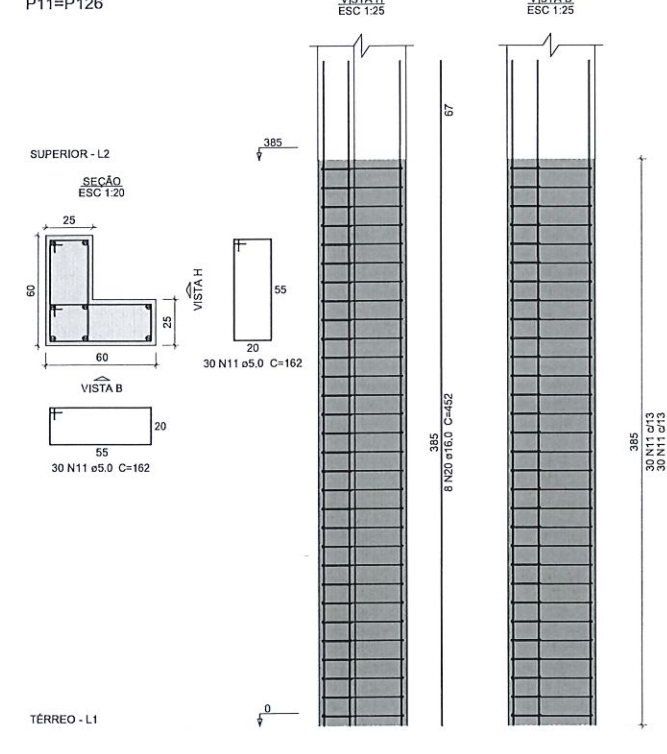
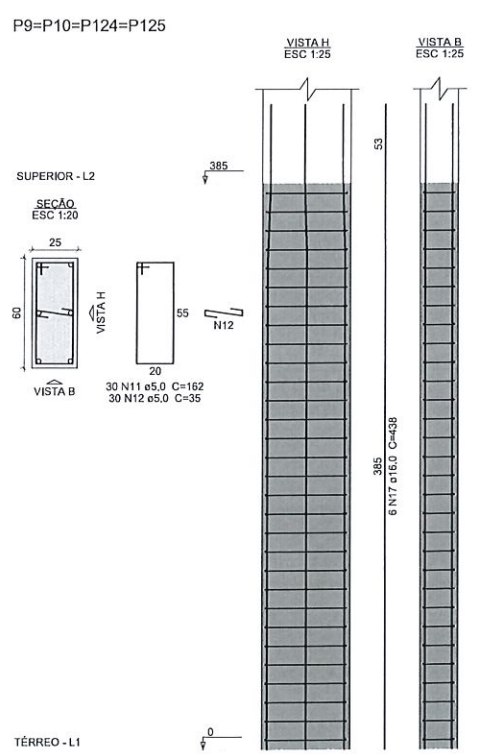
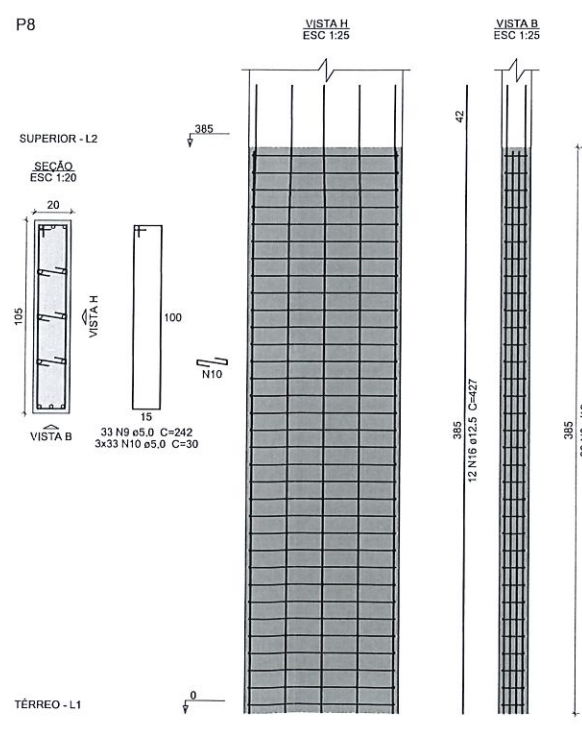
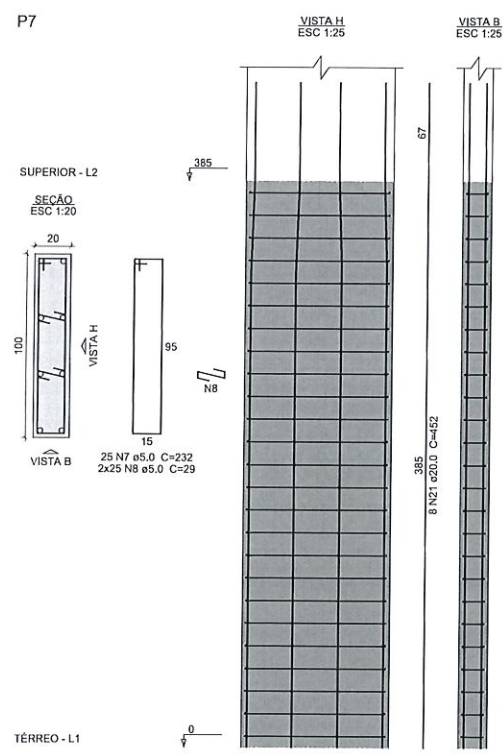
**Relação do aço**

AÇO	N	DIAM (mm)	QUANT	C.UNIT (cm)	C.TOTAL (cm)
CA60	1	5.0	35	192	6720
	2	5.0	70	39	2730
	3	5.0	16	92	1472
	4	5.0	50	172	8600
	5	5.0	30	1500	4500
	6	5.0	60	112	6720
	7	5.0	25	232	5800
	8	5.0	50	29	1450
	9	5.0	33	242	7986
	10	5.0	99	30	2970
	11	5.0	240	162	38880
CA50	12	5.0	120	35	4200
	13	6.3	20	202	4040
	14	6.3	40	38	1520
	15	12.5	4	197	788
	16	12.5	12	427	5124
	17	16.0	36	438	15768
	18	16.0	8	459	3672
	19	16.0	8	382	3056
	20	16.0	16	452	7232
	21	20.0	16	452	7232

**Resumo do aço**

AÇO	DIAM (mm)	C.TOTAL (m)	PESO + 10% (kg)
CA50	6.3	55.6	15
	12.5	59.2	62.6
	16.0	297.3	516.1
	20.0	72.4	156.2
CA60	5.0	890.3	150.9
	PESO TOTAL (kg)		
CA50	789.9		
CA60	150.9		

Volume de concreto (C-30) = 9,17 m<sup>3</sup>  
Área de forma = 104,41 m<sup>2</sup>



Nº	Comentário	Data	Autor
0	Emissão inicial		

**ALGETEC ENGENHARIA E CONSTRUÇÃO**  
Rua João Pessoa, 880 - sl B - Santa Terezinha  
Palo Branco/PR  
46.99102 2782  
www.algetec.eng.br

Proprietário: Município de Palo Branco

Resp. Técnico: Eng. Daniel Patrício de CREA: 072040/D  
Eng. Civil André Mateus Canan, CREA: 193875/D  
Eng. Civil Loriane C. Parcianello, CREA: 172355/D

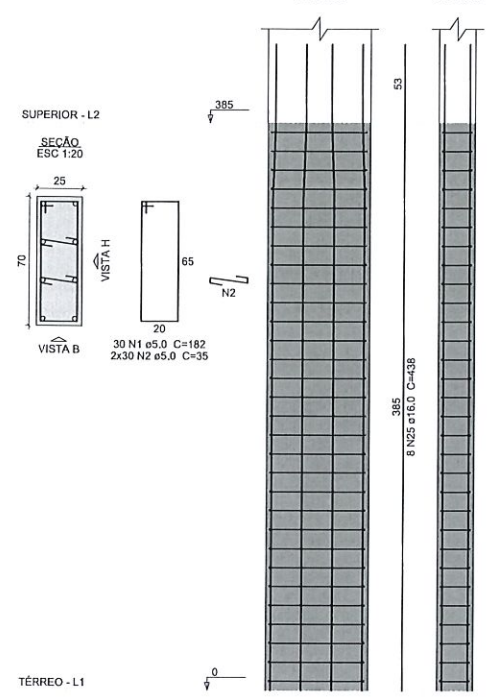
Encl.: Rua Jaciêta, Palo Branco/PR  
Data: 12/07/2021

Obra: Teatro Municipal Naura Rigon  
Escala: Indicada

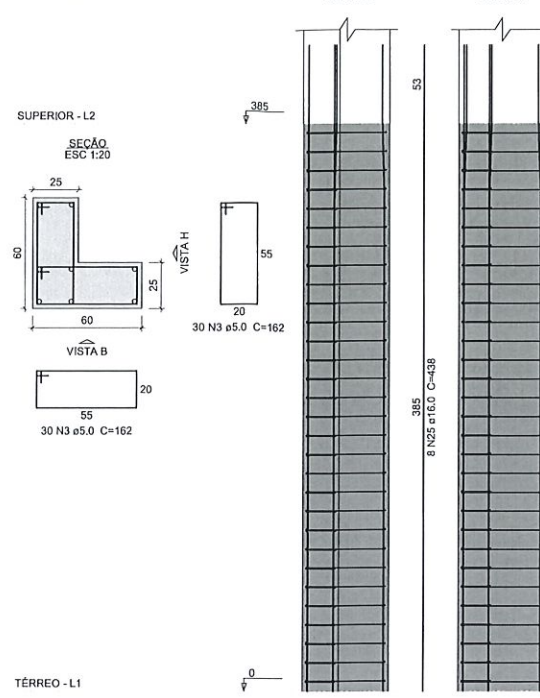
Referência: Pavimento: Superior  
Pilares 1



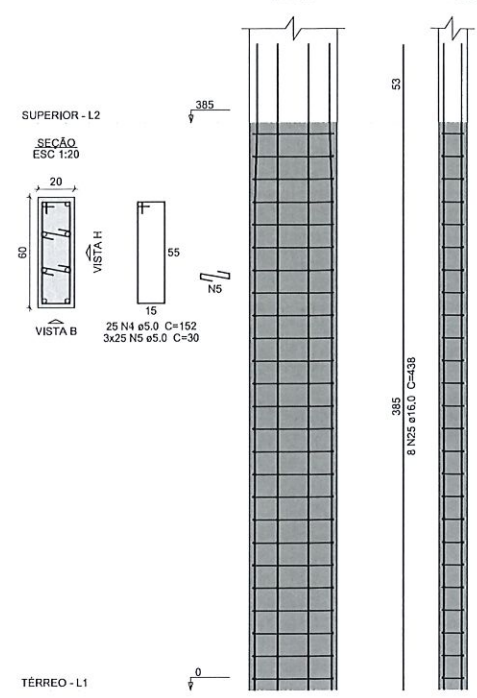
P12=P127



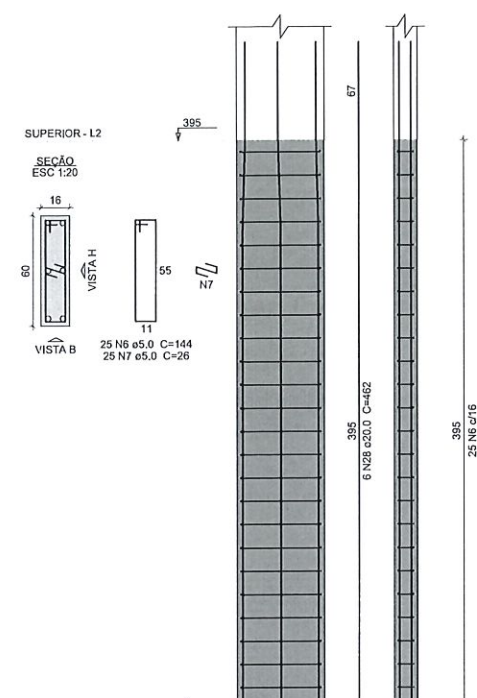
P13=P128



P15



P16



Relação do aço

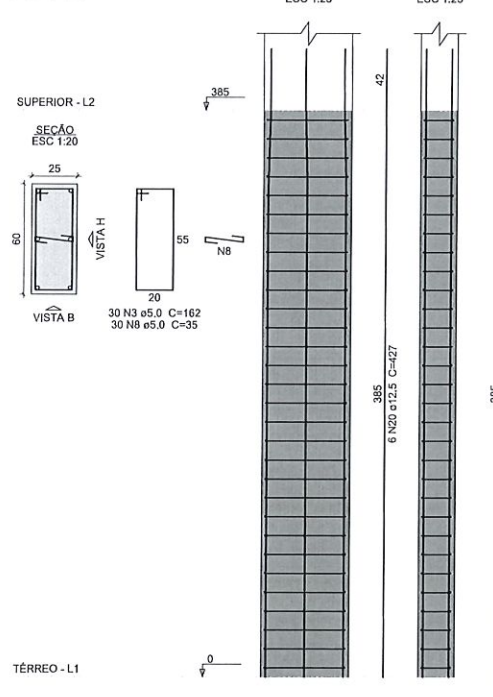
AÇO	N	DIAM (mm)	QUANT	C.UNIT (cm)	C.TOTAL (cm)
CA60	1	5.0	60	182	10920
	2	5.0	120	35	4200
	3	5.0	180	162	29160
	4	5.0	50	152	7600
	5	5.0	75	30	2250
	6	5.0	25	144	3600
	7	5.0	25	26	650
	8	5.0	60	35	2100
	9	5.0	35	212	7420
	10	5.0	35	89	3115
	11	5.0	35	39	1365
	12	5.0	50	29	1450
	13	5.0	38	132	5016
	14	5.0	38	30	1140
	15	5.0	45	72	3240
	16	5.0	156	92	14352
	17	6.3	43	300	12900
	18	6.3	172	25	4300
	19	10.0	20	102	2040
	20	12.5	12	427	5124
	21	12.5	12	438	5256
	22	12.5	12	277	3324
	23	12.5	8	230	1840
	24	12.5	24	181	4344
	25	16.0	40	438	17520
	26	16.0	8	382	3056
	27	16.0	8	181	1448
	28	20.0	6	462	2772
	29	20.0	8	452	3616

Resumo do aço

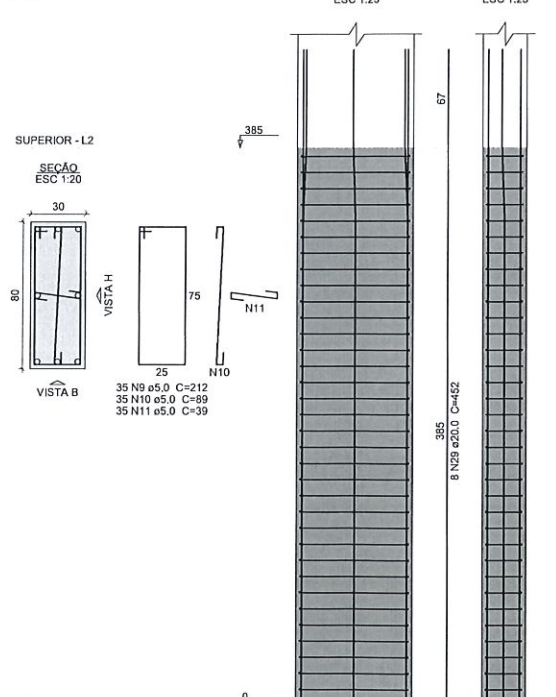
AÇO	DIAM (mm)	C.TOTAL (m)	PESO + 10 % (kg)
CA50	6.3	172	46.3
	10.0	20.4	13.8
	12.5	198.9	210.7
	16.0	220.3	382.4
	20.0	63.9	173.3
CA60	5.0	975.8	165.4
PESO TOTAL (kg)			
CA50		826.5	
CA60		165.4	

Volume de concreto (C-30) = 9.29 m³  
 Área de forma = 116.27 m²

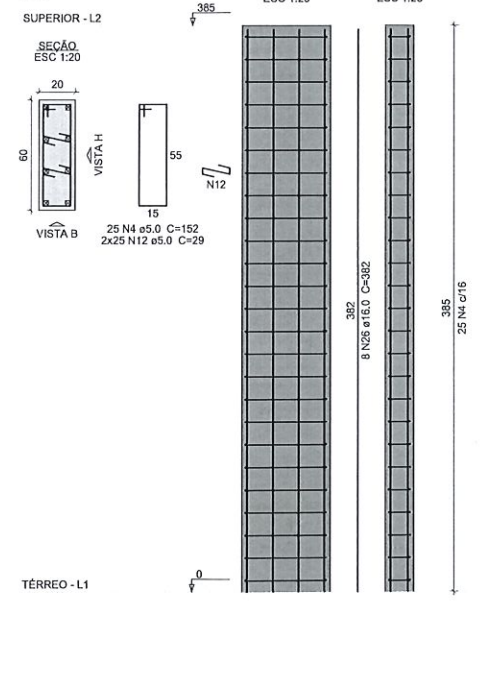
P19=P107



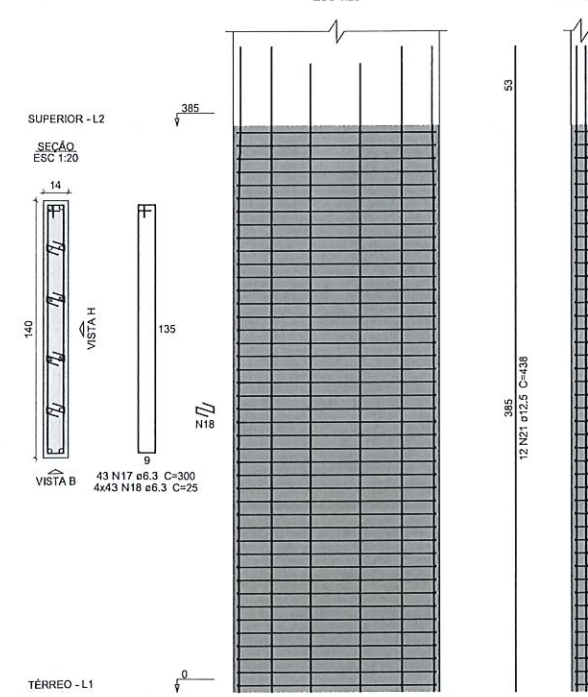
P21



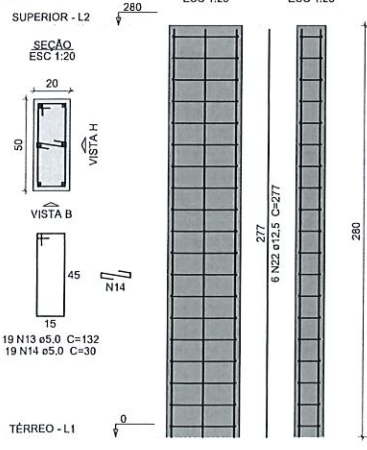
P25



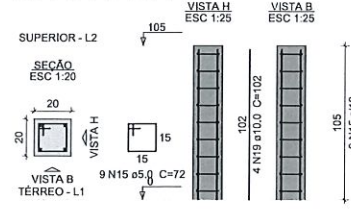
P26



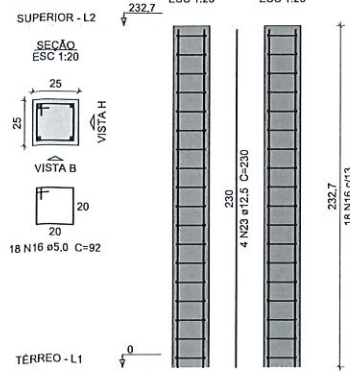
P27=P62



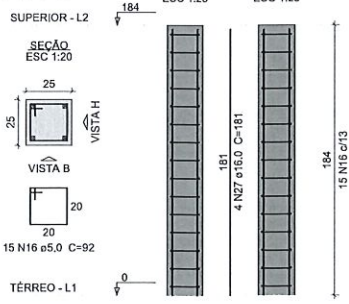
P28=P48=P68=P84=P102



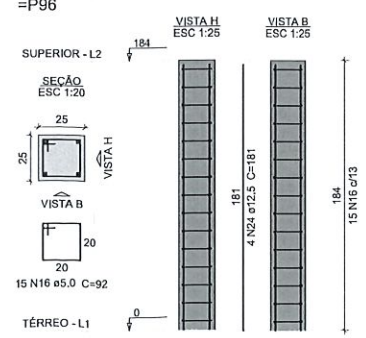
P29=P94



P30=P95



P31=P44=P45=P64=P79=P96



Nº	Comentário	Data	Autor
0	Emissão inicial		

**ALGETEC ENGENHARIA E CONSTRUÇÃO**  
 Rua João Pessoa, 880 - sl B - Santa Terezinha  
 Pato Branco/PR  
 46. 99102 2782  
 www.algetec.eng.br

Proj. Técnico: Eng. Civil Denis Parcianello, CREA: 072040/D  
 Eng. Civil André Mateus Canan, CREA: 193875/D  
 Eng. Civil Loriane C. Parcianello, CREA: 172355/D

Proj. Executivo: Eng. Civil Denis Parcianello, CREA: 072040/D  
 Eng. Civil André Mateus Canan, CREA: 193875/D  
 Eng. Civil Loriane C. Parcianello, CREA: 172355/D

Proj. Executivo: Eng. Civil Denis Parcianello, CREA: 072040/D  
 Eng. Civil André Mateus Canan, CREA: 193875/D  
 Eng. Civil Loriane C. Parcianello, CREA: 172355/D

Proj. Executivo: Eng. Civil Denis Parcianello, CREA: 072040/D  
 Eng. Civil André Mateus Canan, CREA: 193875/D  
 Eng. Civil Loriane C. Parcianello, CREA: 172355/D