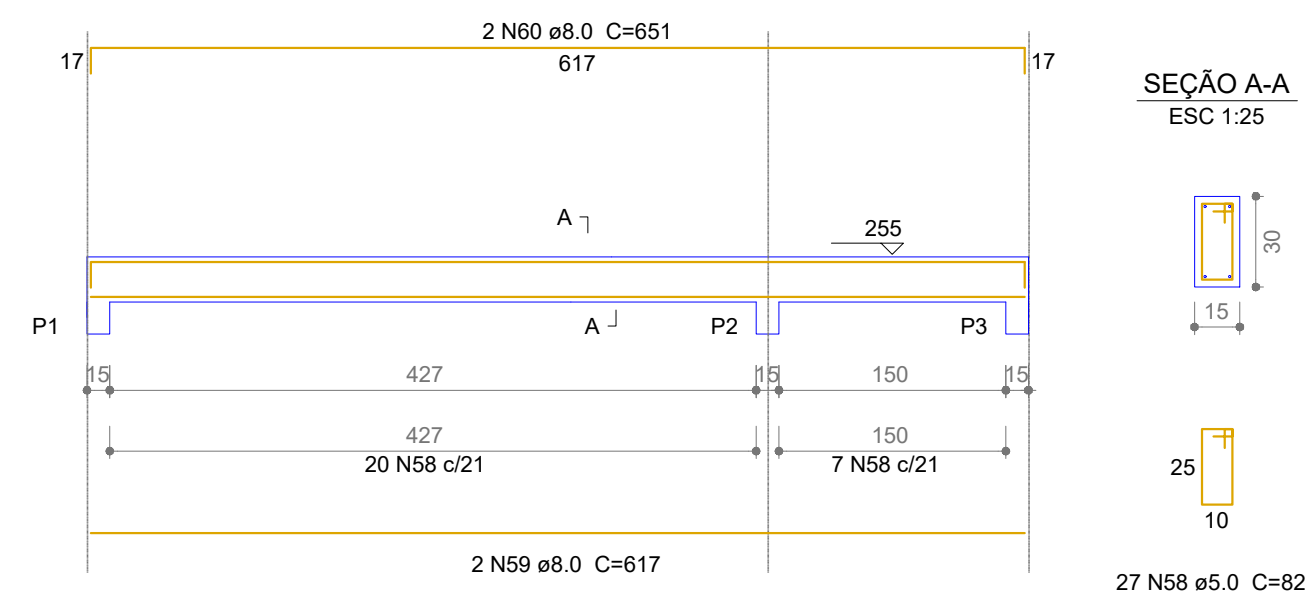


FORMA COBERTURA
ESCALA 1:50

Vigas			
Nome	Seção (cm)	Elevação (cm)	Nível (cm)
V1	15x30	0	255
V2	15x30	0	255
V3	15x30	0	255
V4	15x30	0	255
V5	15x30	0	255
V6	15x30	0	255
V7	15x30	0	255
V8	15x30	0	255
V9	15x30	0	255
V10	15x30	0	255
V11	15x30	0	255

Características dos materiais	
f _{yk} (kgf/cm ²)	E _s (kgf/cm ²)
250	238000

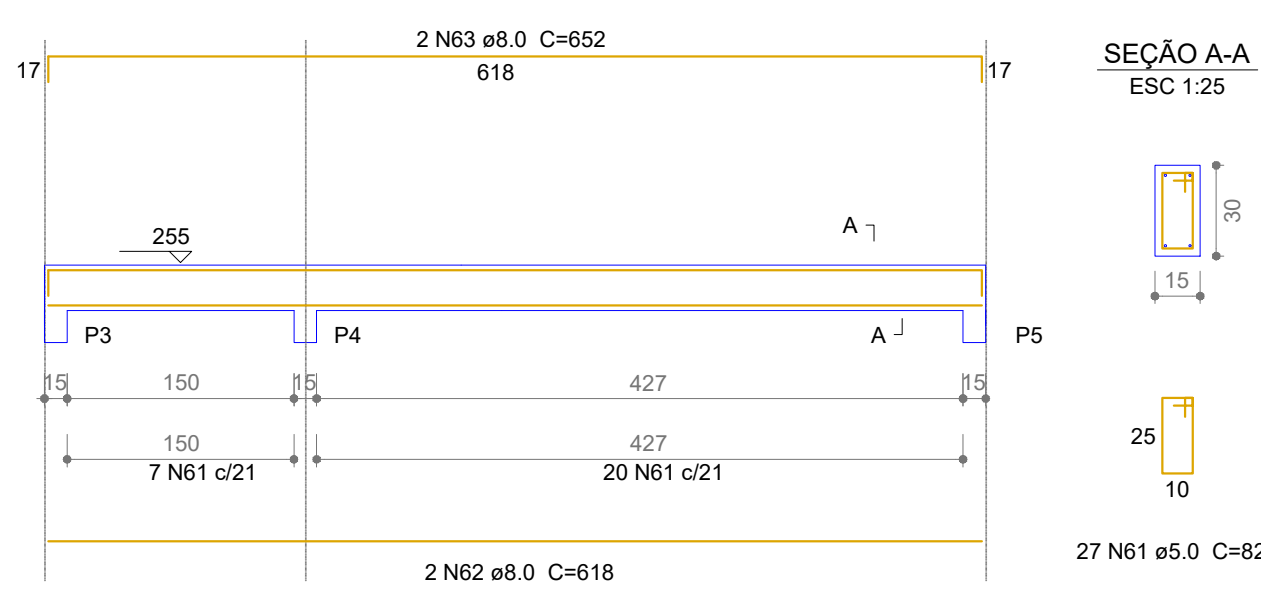
V1
ESC 1:50



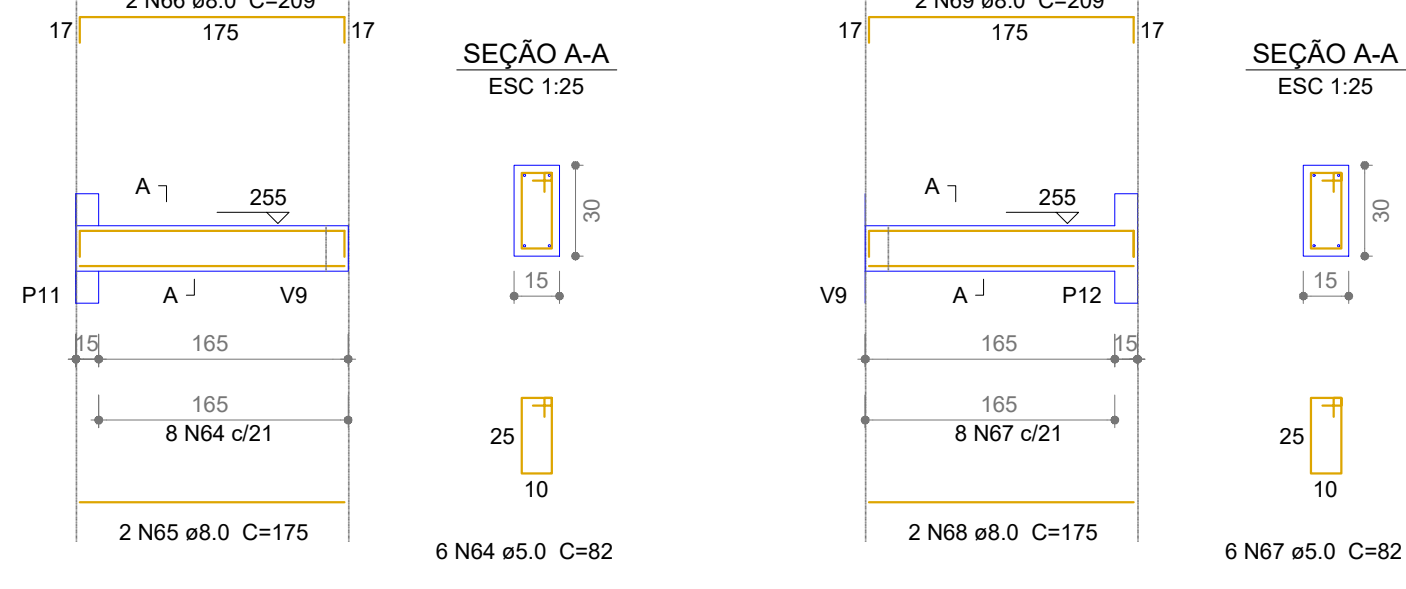
Relação do aço

ELEMENTO	AÇO	N	DIAM	Q	UNIT (cm)	C.TOTAL (cm)
V1	CA60	58	5.0	27	82	2214
	CA50	59	8.0	2	617	1234
	CA50	60	8.0	2	651	1302
V2	CA60	61	5.0	27	82	2214
	CA50	62	8.0	2	618	1236
	CA50	63	8.0	2	652	1304
V3	CA60	64	5.0	8	82	656
	CA50	65	8.0	2	175	350
	CA50	66	8.0	2	209	418
V4	CA60	67	5.0	8	82	656
	CA50	68	8.0	2	175	350
	CA50	69	8.0	2	209	418
V5	CA60	70	5.0	27	82	2214
	CA50	71	8.0	2	617	1234
	CA50	72	8.0	2	651	1302
V6	CA60	73	5.0	27	82	2214
	CA50	74	8.0	2	618	1236
	CA50	75	8.0	2	652	1304
V7	CA60	76	5.0	21	82	1722
	CA50	77	8.0	2	485	970
	CA50	78	8.0	2	519	1038
V8	CA60	79	5.0	21	82	1722
	CA50	80	8.0	2	490	980
	CA50	81	8.0	2	524	1048
V9	CA60	82	5.0	21	82	1722
	CA50	83	8.0	2	485	970
	CA50	84	8.0	2	519	1038
V10	CA60	85	5.0	21	82	1722
	CA50	86	8.0	2	490	980
	CA50	87	8.0	2	524	1048
V11	CA60	88	5.0	21	82	1722
	CA50	89	8.0	2	485	970
	CA50	90	8.0	2	519	1038

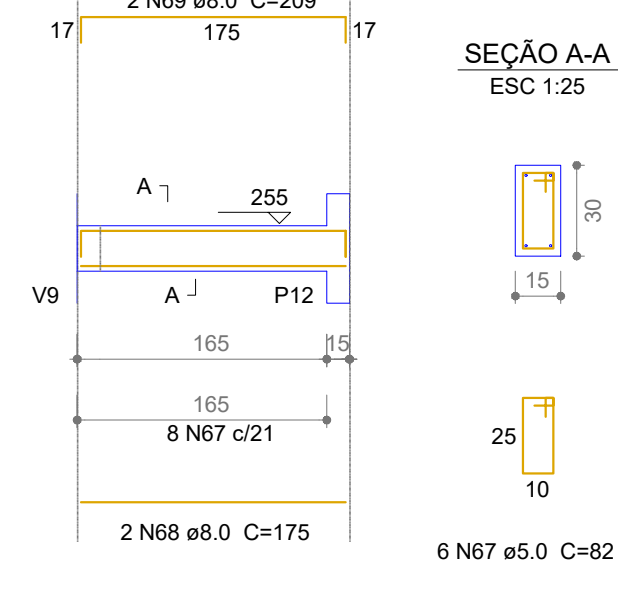
V2
ESC 1:50



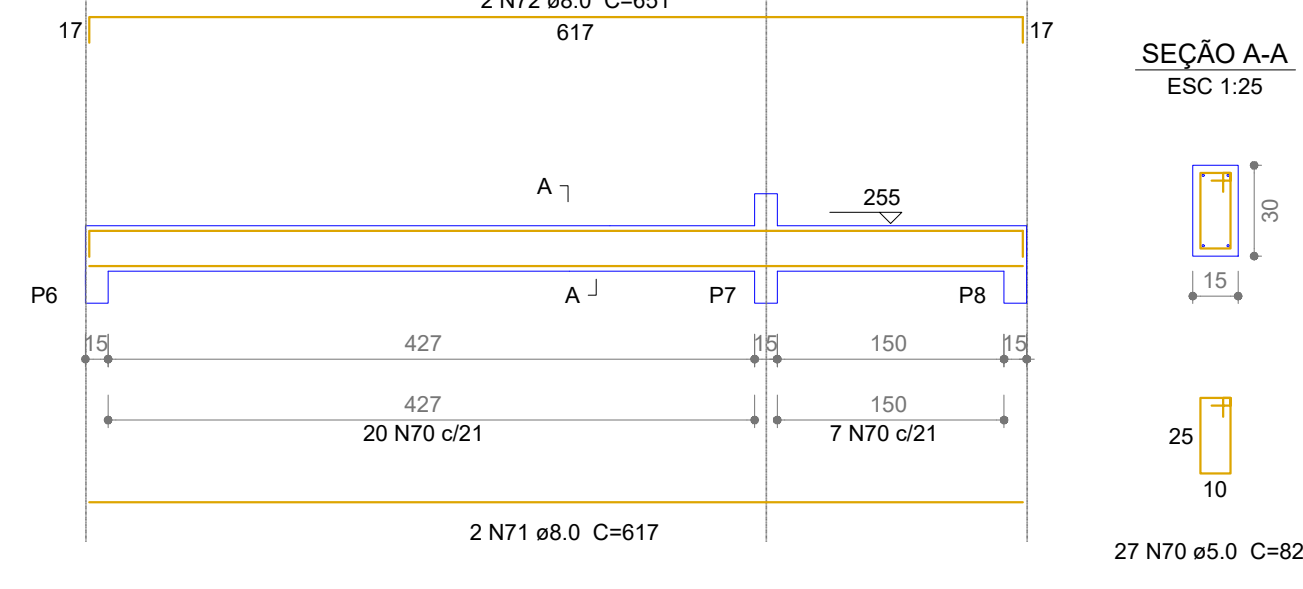
V3
ESC 1:50



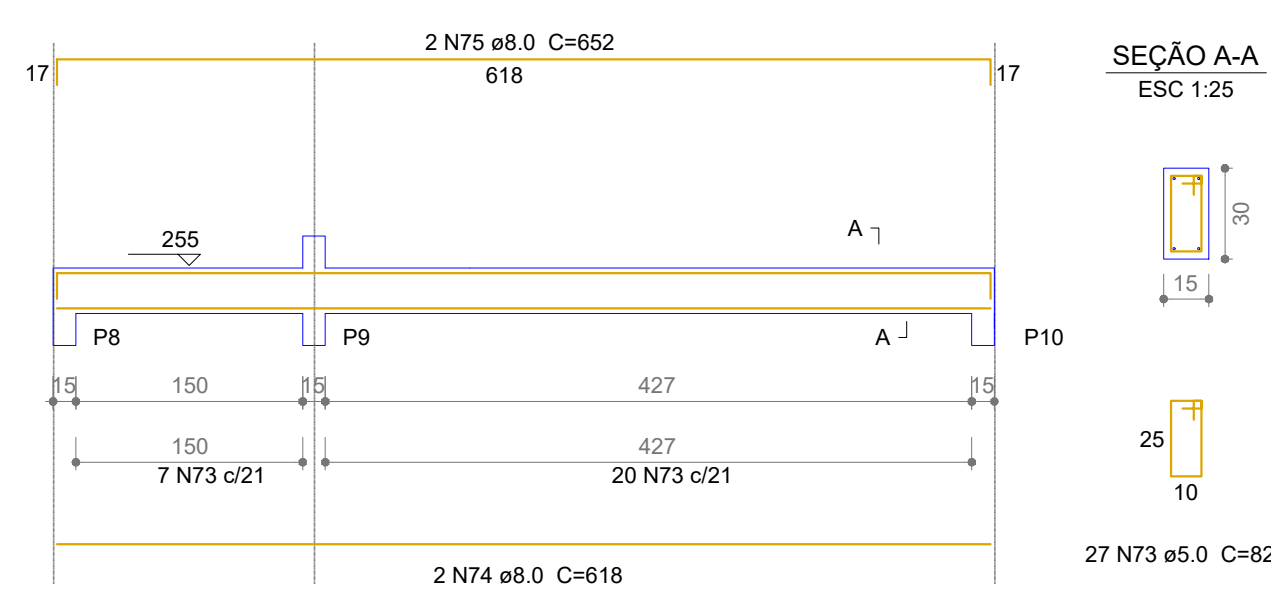
V4
ESC 1:50



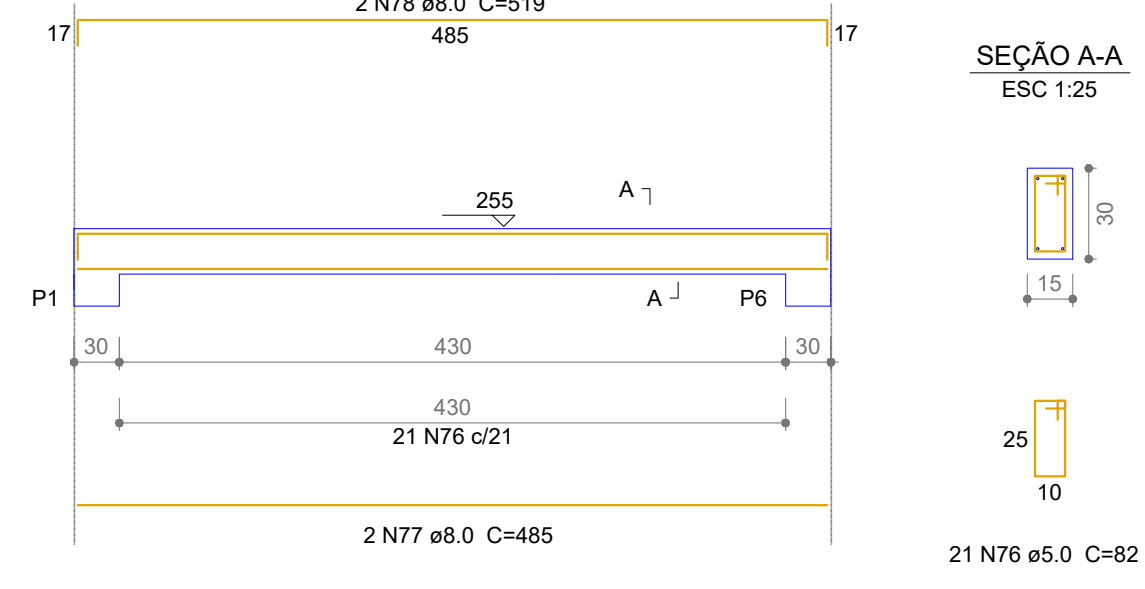
V5
ESC 1:50



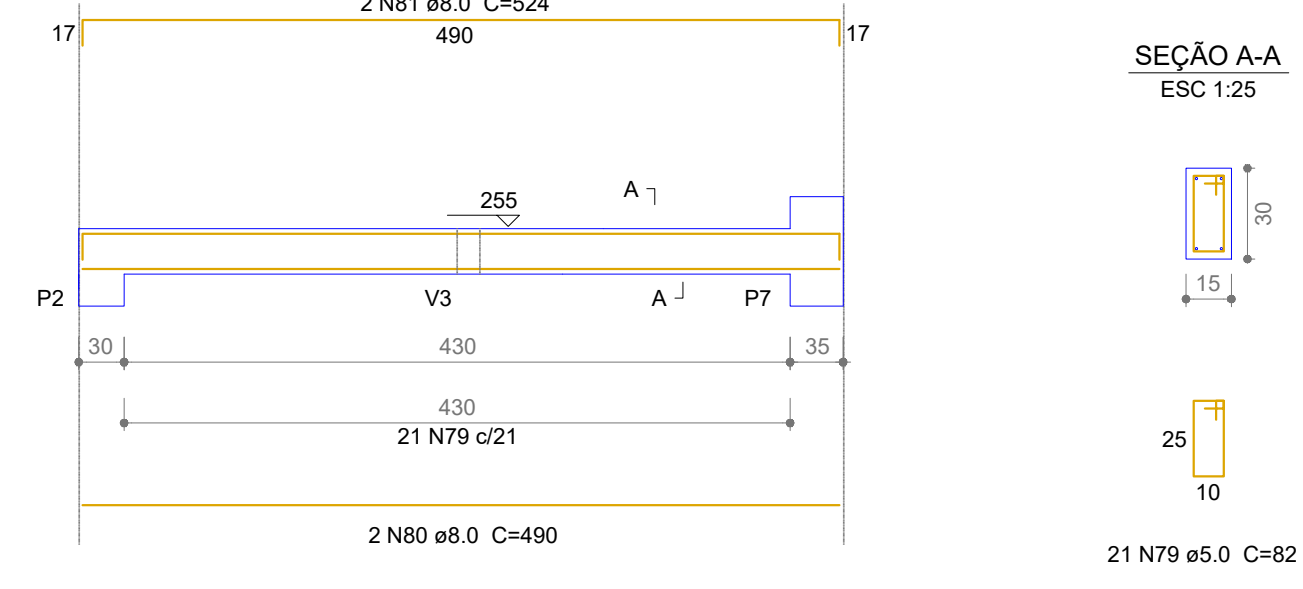
V6
ESC 1:50



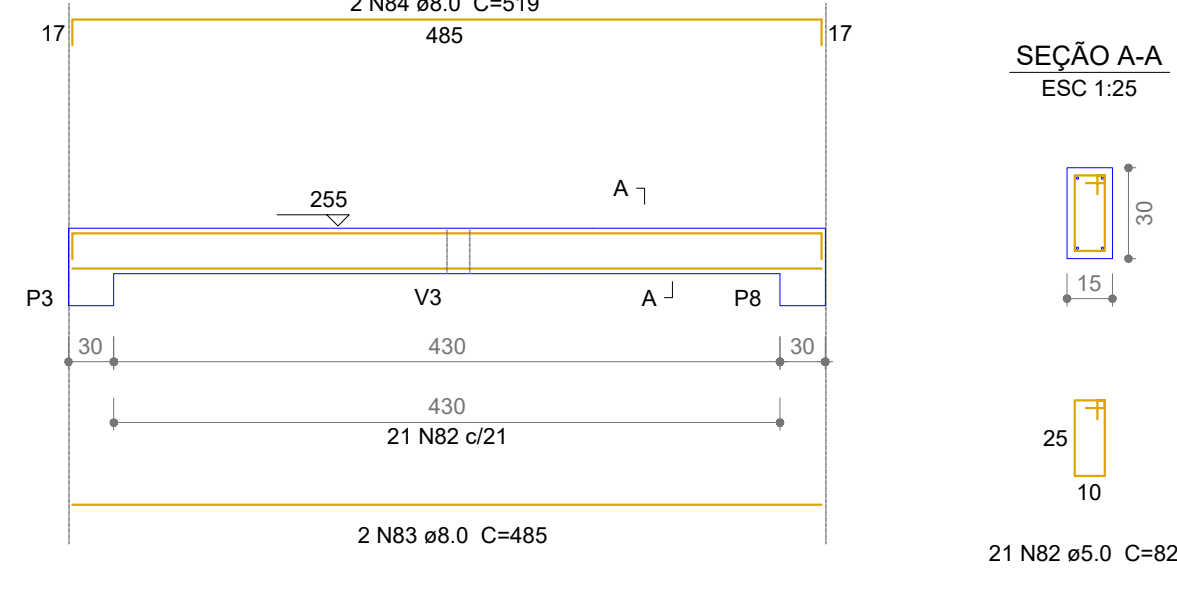
V7
ESC 1:50



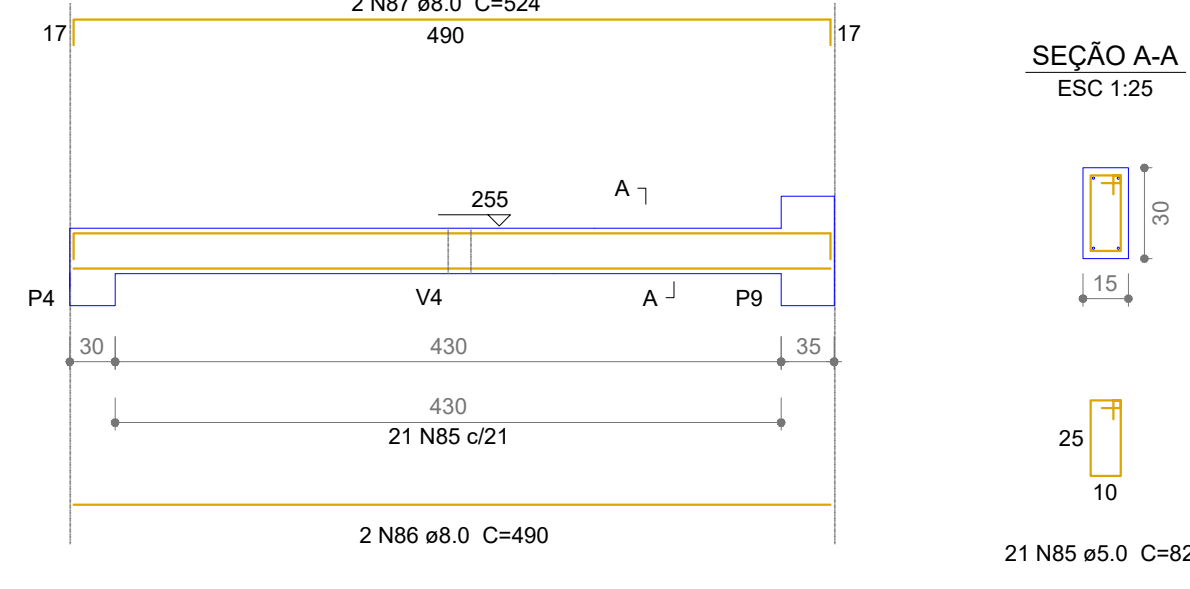
V8
ESC 1:50



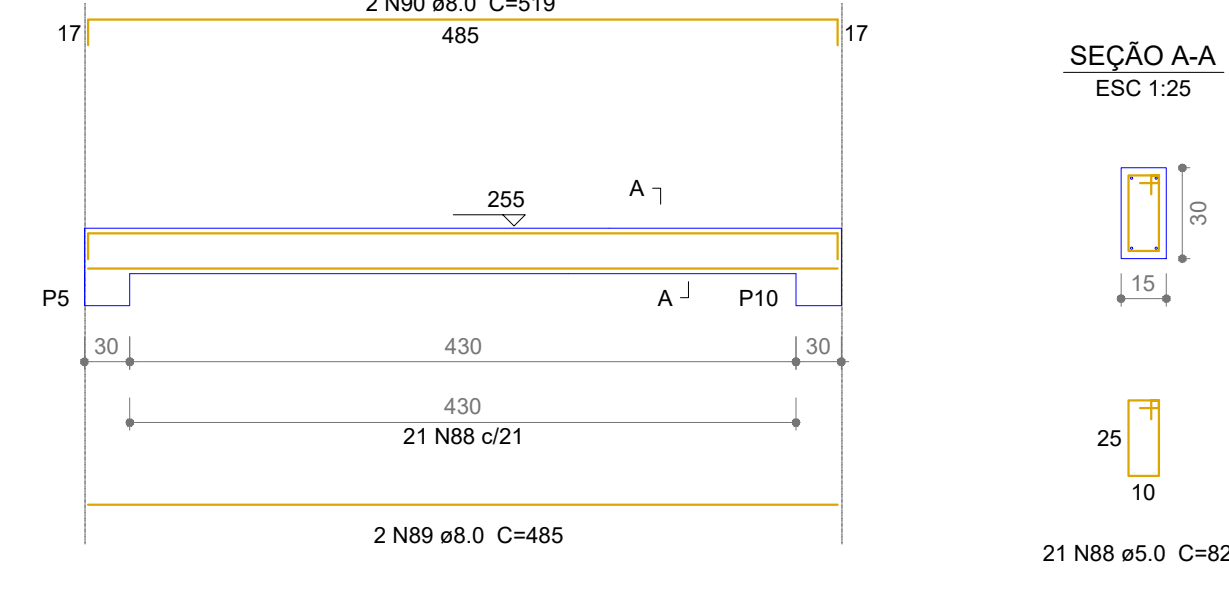
V9
ESC 1:50



V10
ESC 1:50



V11
ESC 1:50



Resumo do aço

AÇO	DIAM	C.TOTAL (m)	PESO + 10 % (kg)
CA50	8.0	217.7	93.4
CA60	5.0	187.8	31.8
PESO TOTAL			
CA50		93.4	
CA60		31.8	

Vol. de concreto total (C-25) = 2.17 m³
Área de forma total = 36.14 m²



MUNICÍPIO DE PATO BRANCO
Secretaria de Engenharia e Obras
Rua Caramuru, 271 - Centro
Fone/Fax (46) 3223-2509
engenharia@patobranco.pr.gov.br