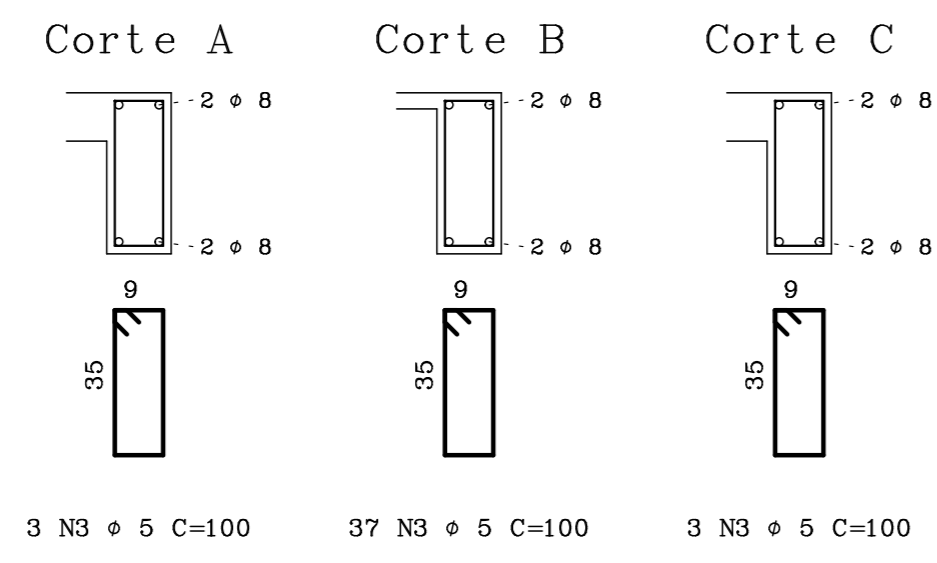
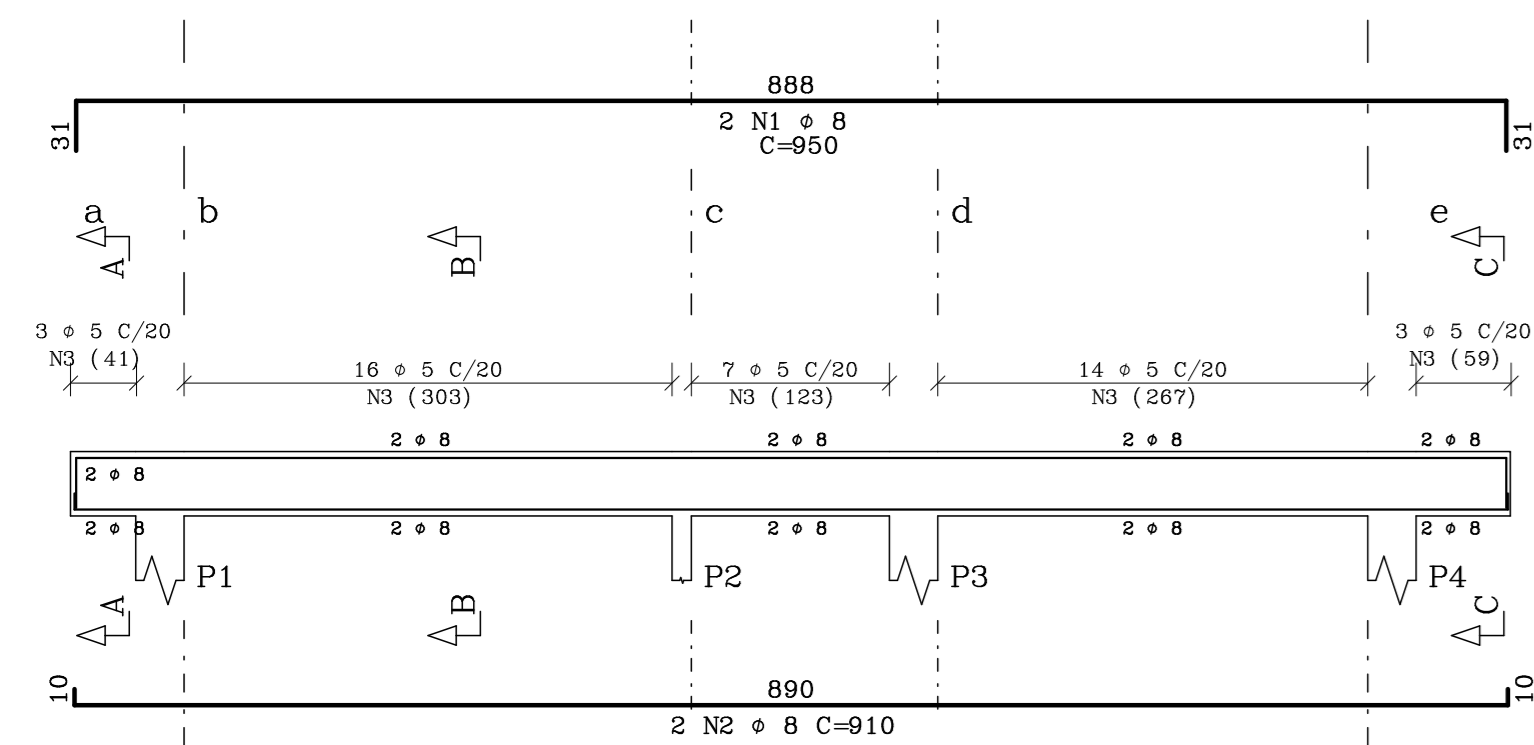
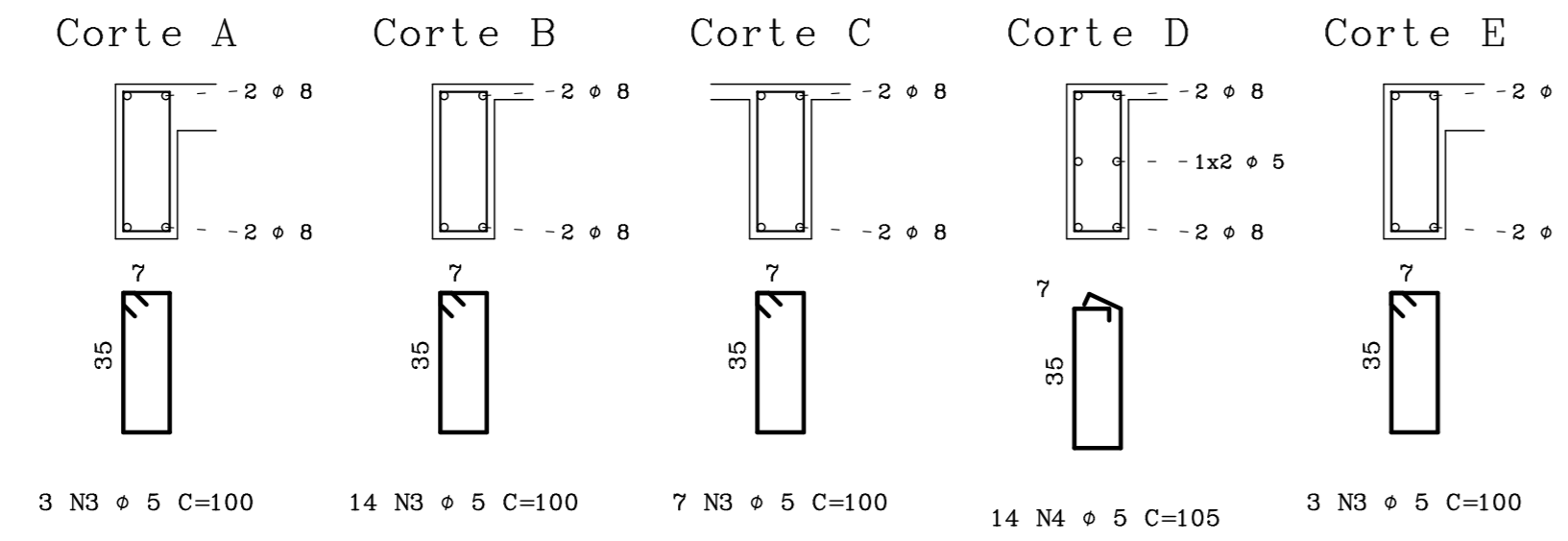
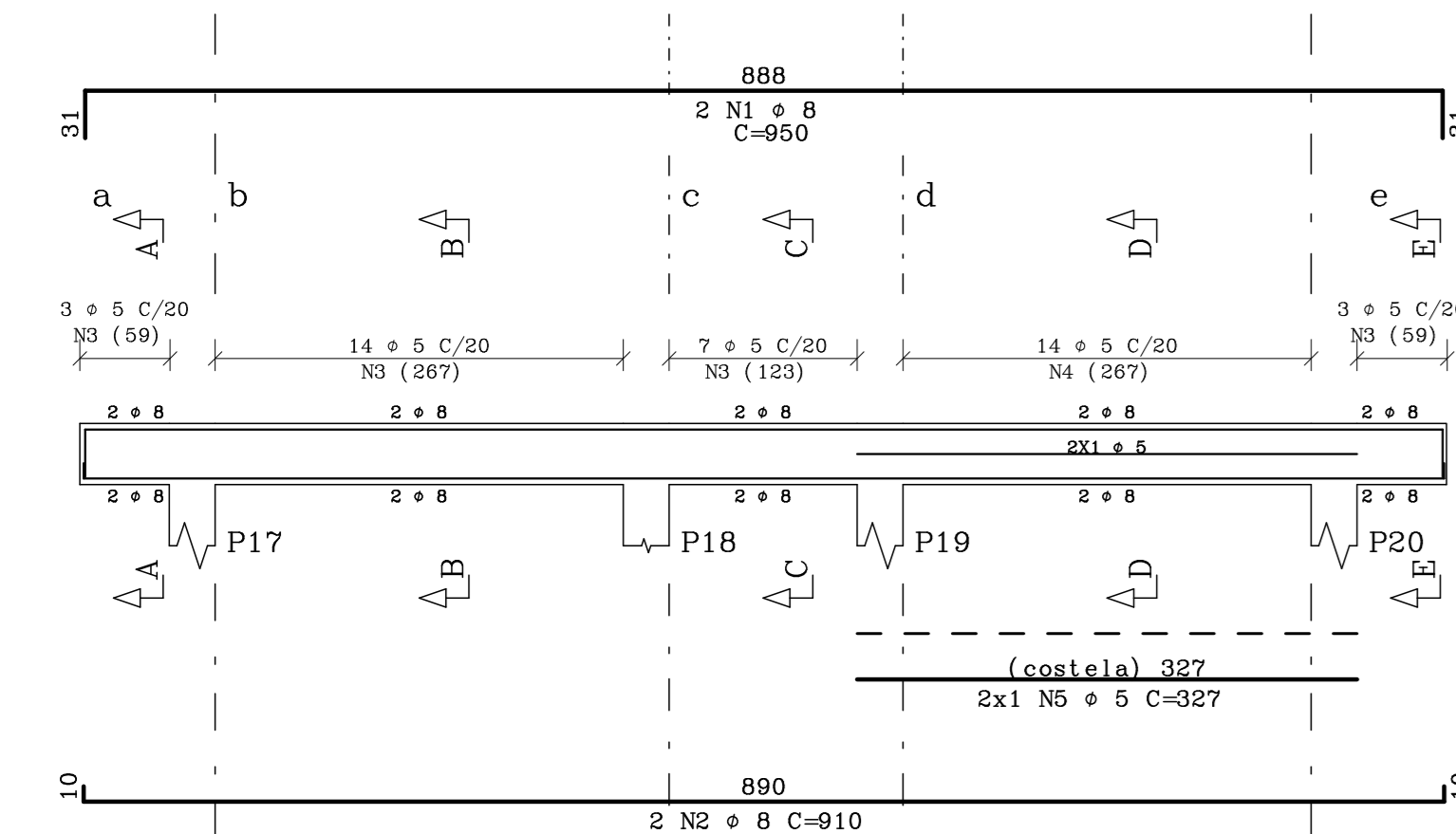


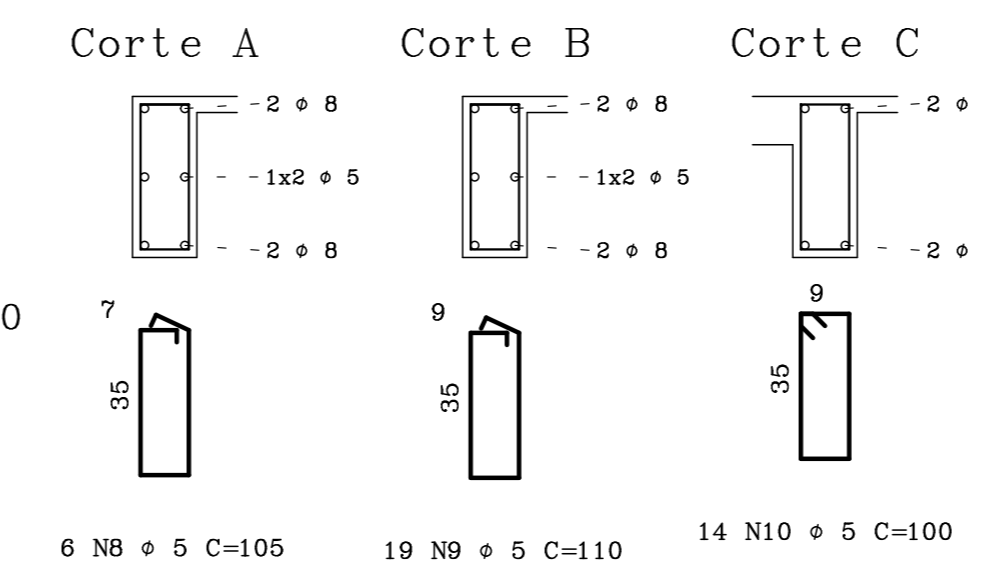
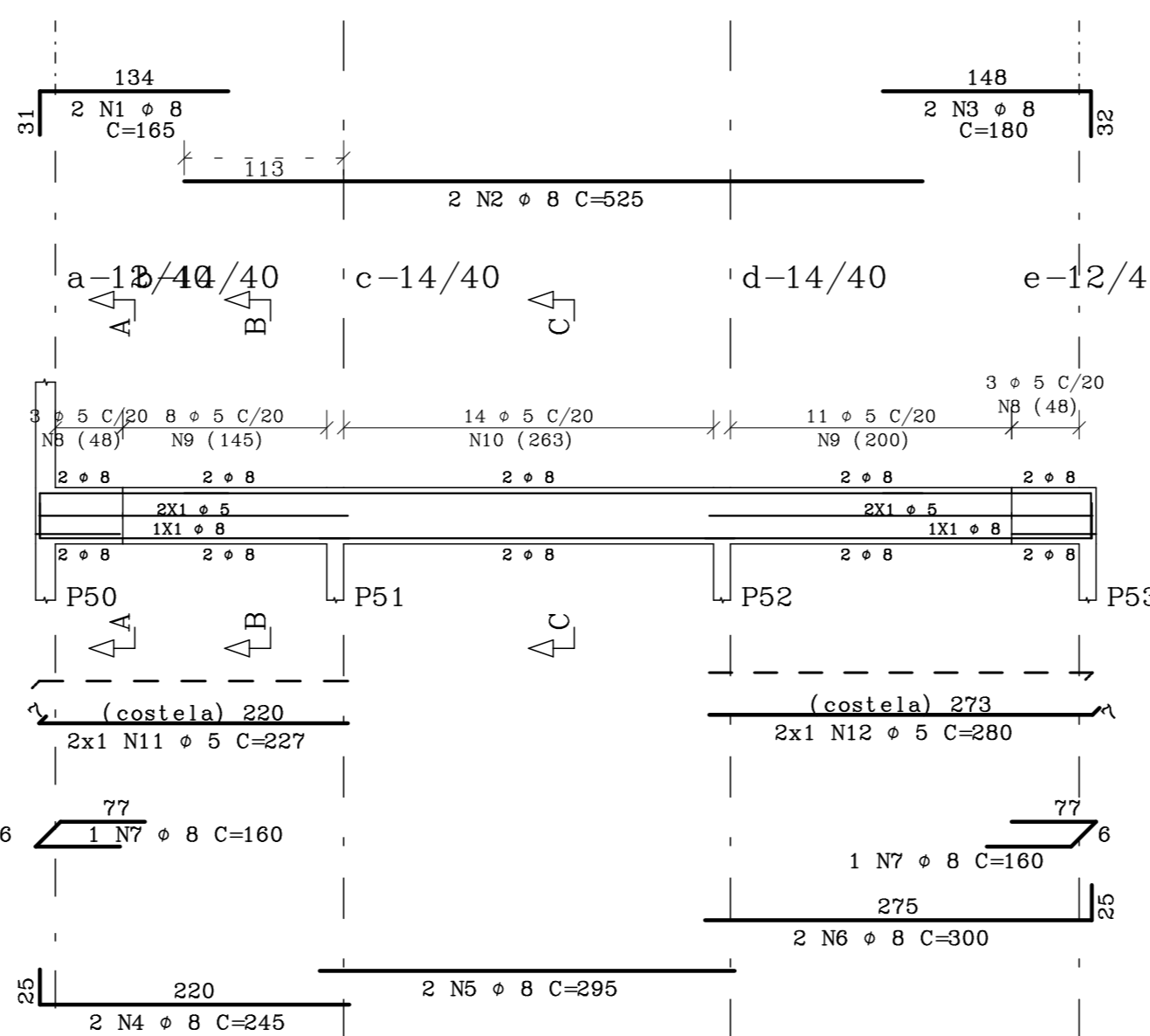
V1 14/40



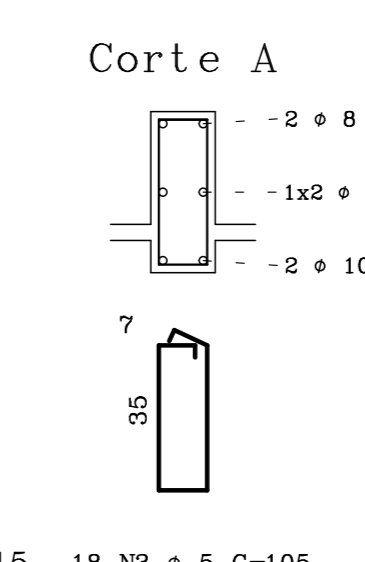
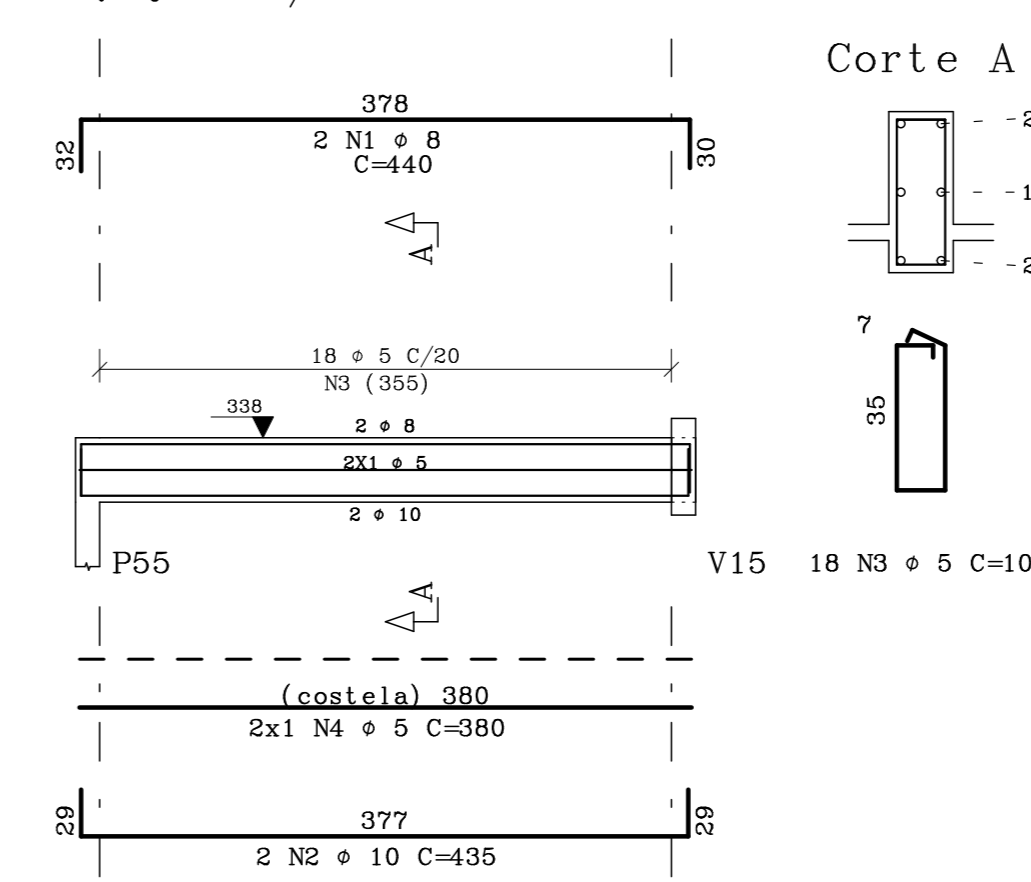
V2 12/40



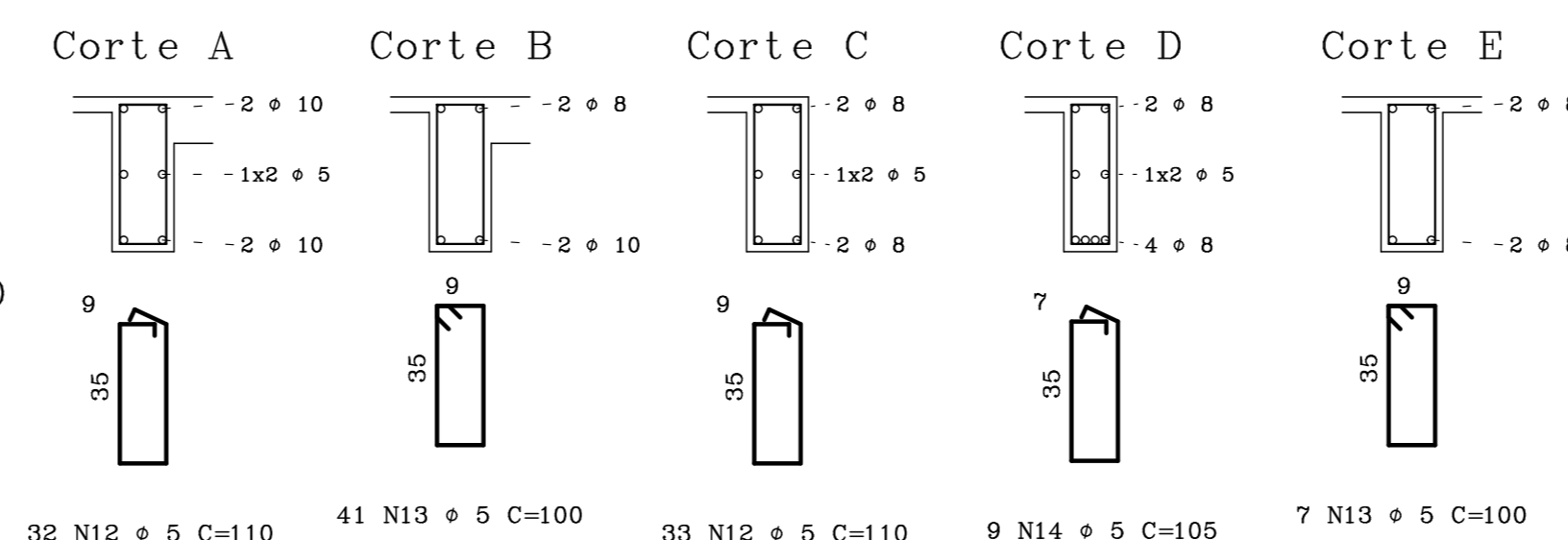
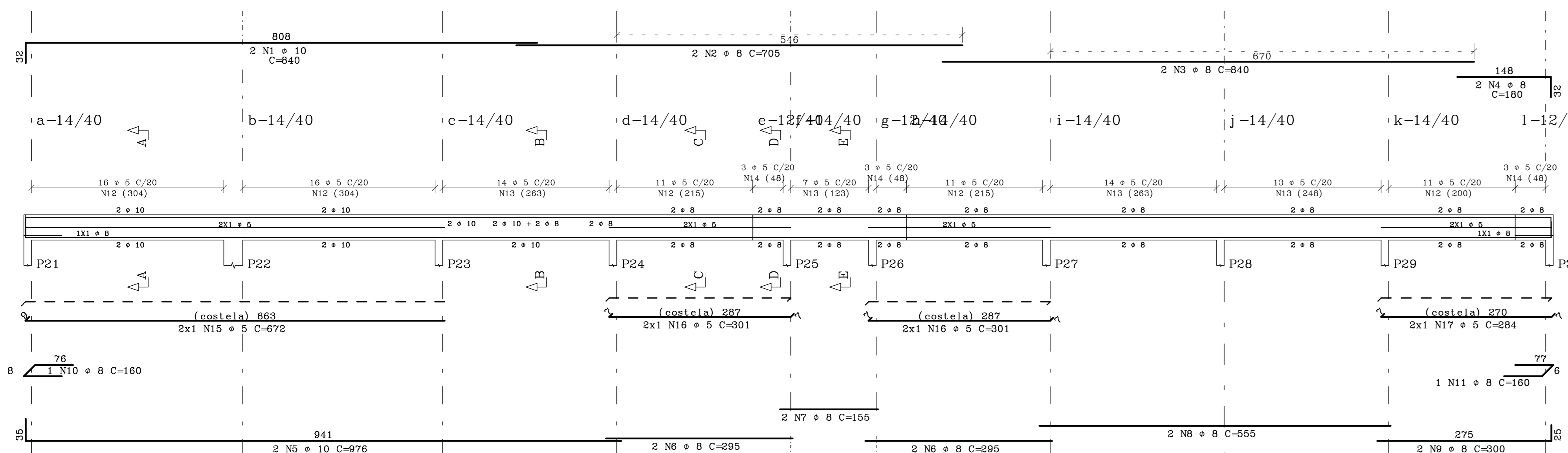
V6



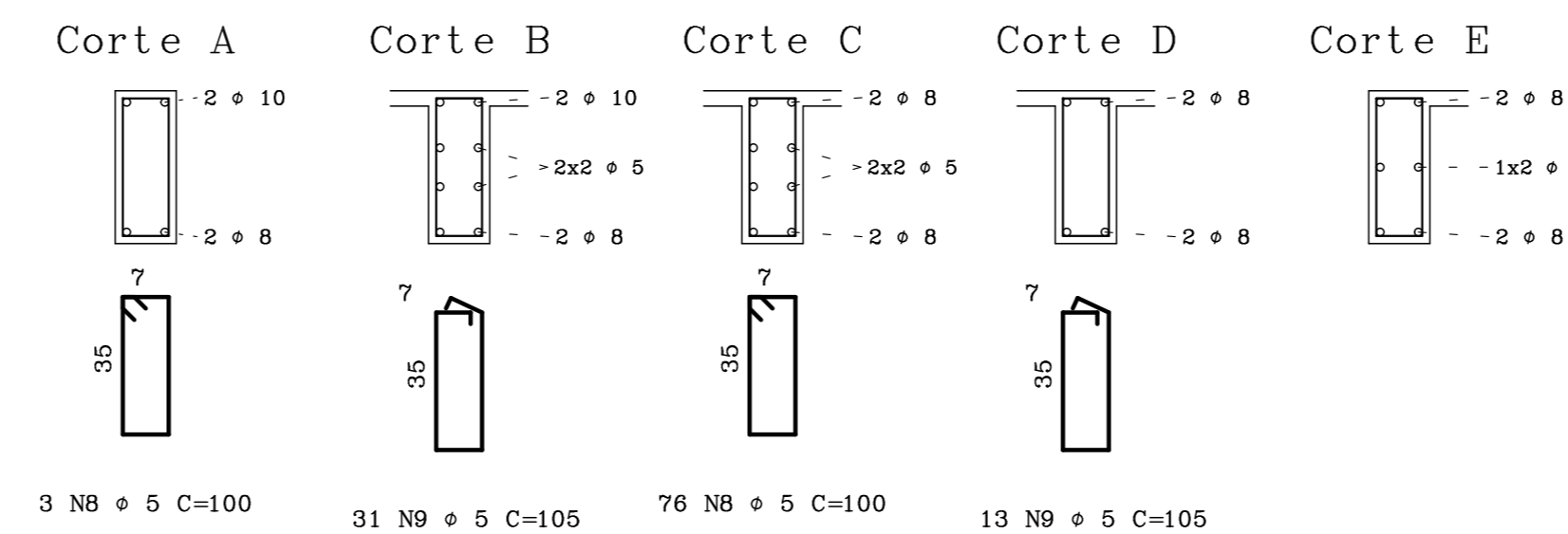
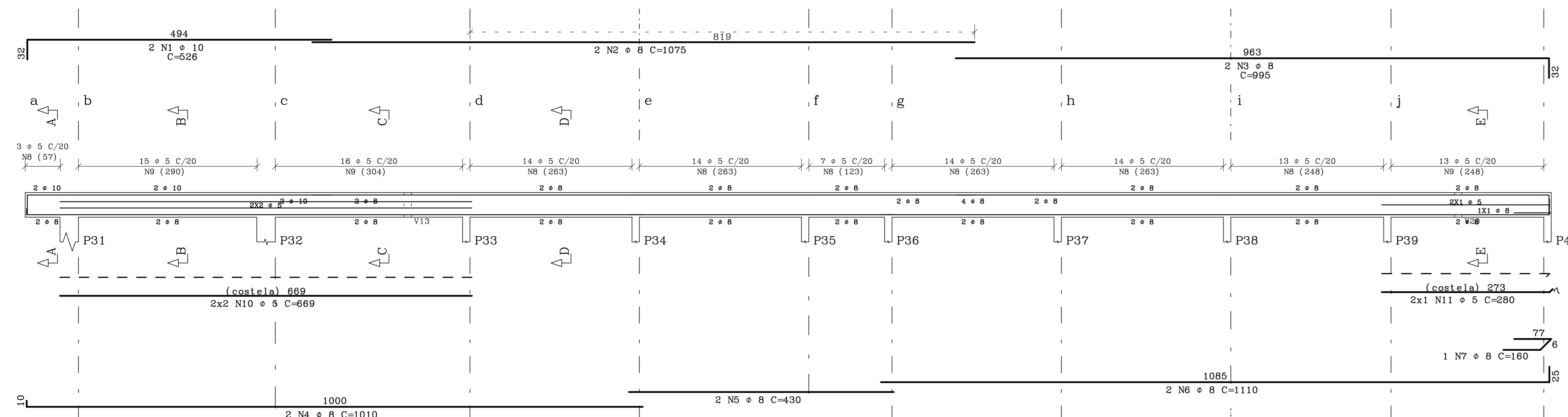
V7 12/40



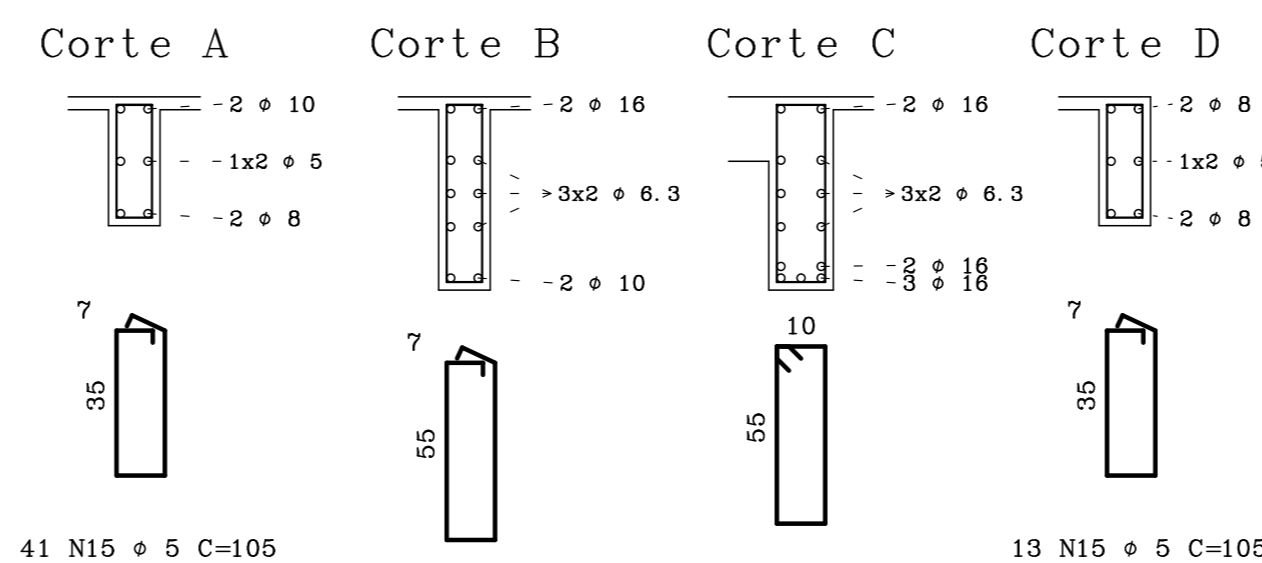
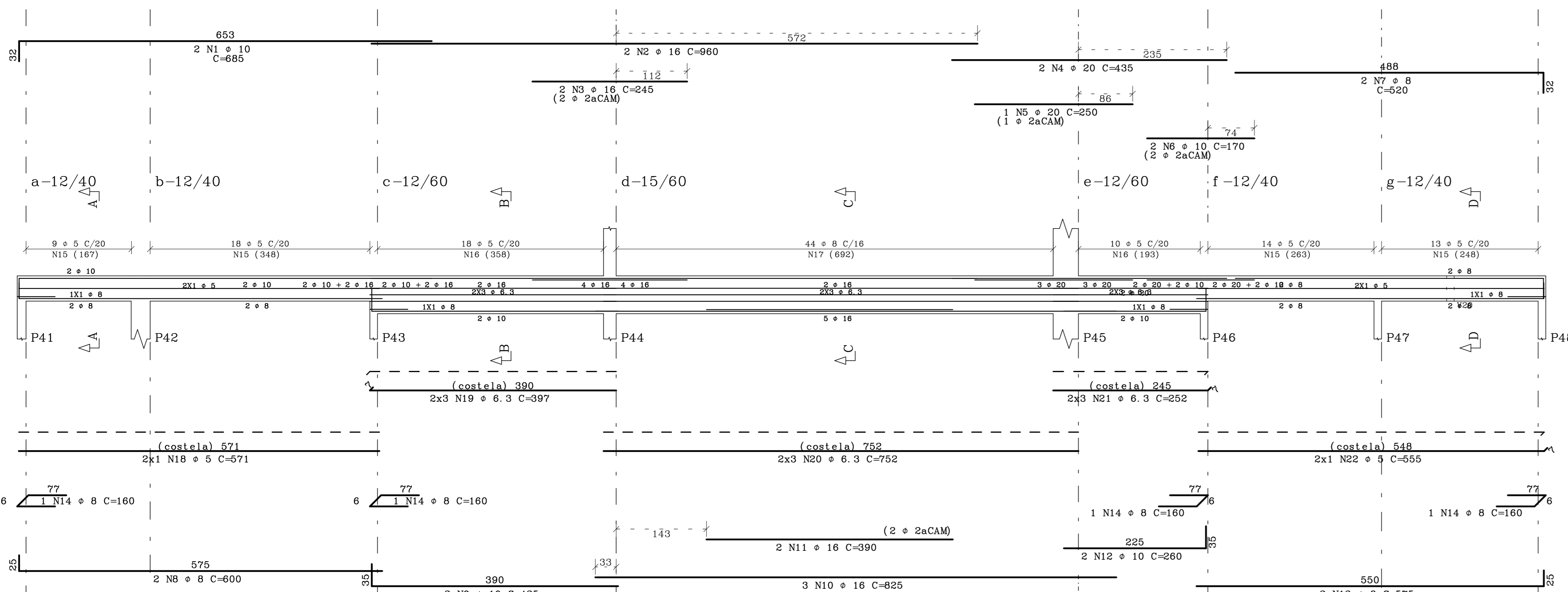
V3



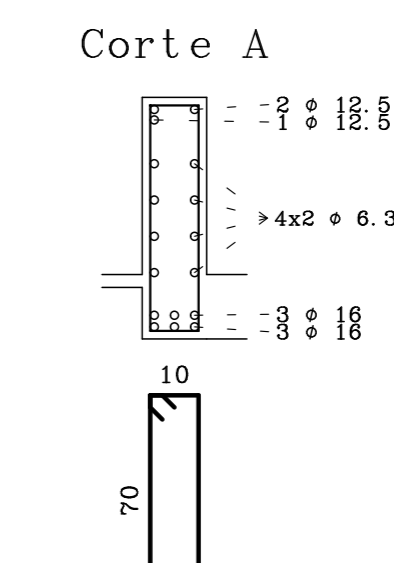
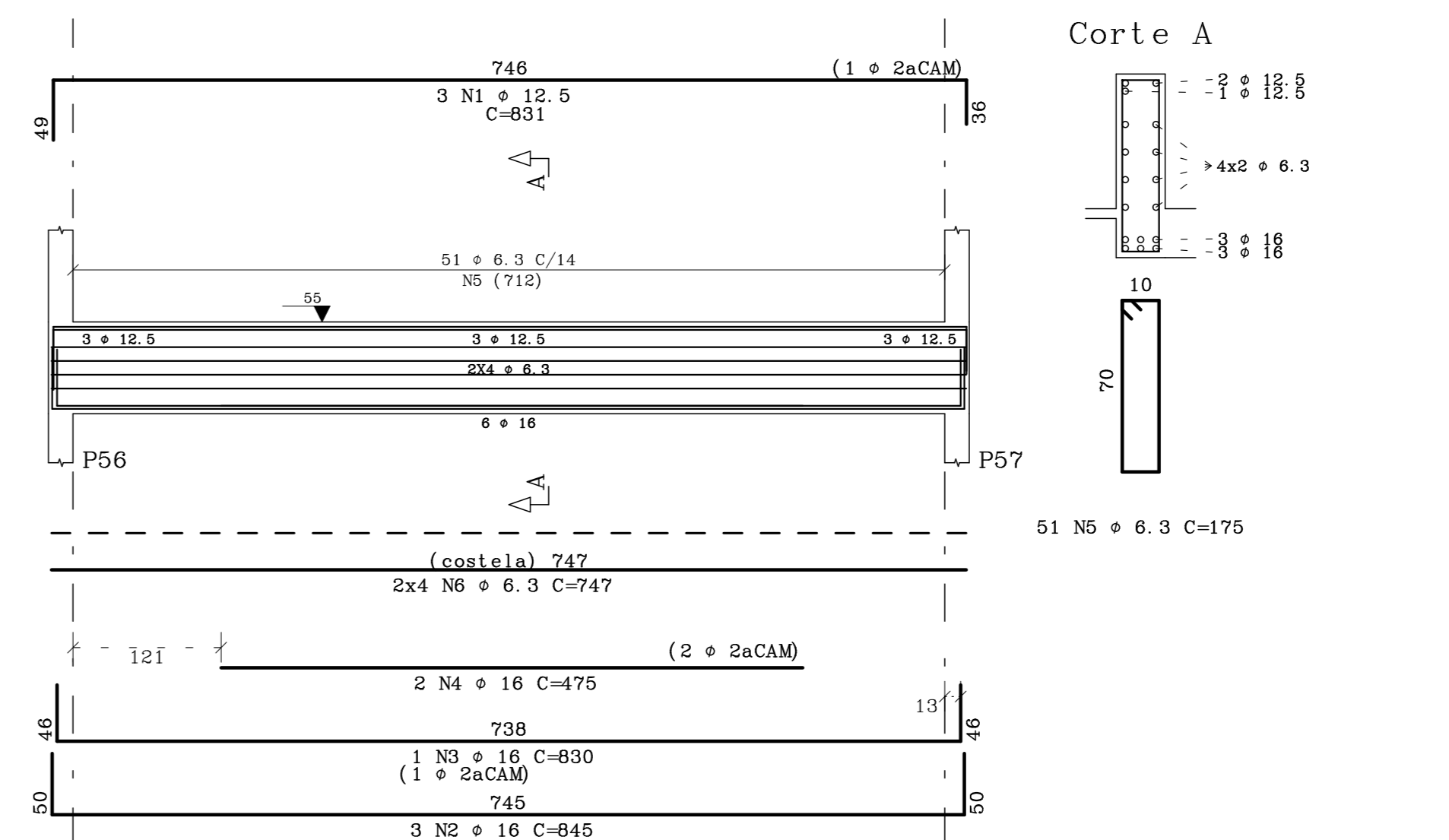
V4 12/40



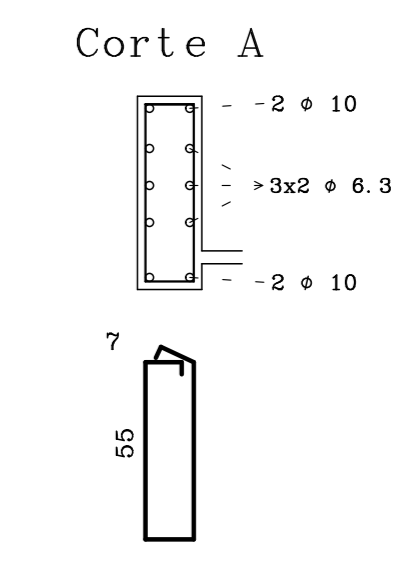
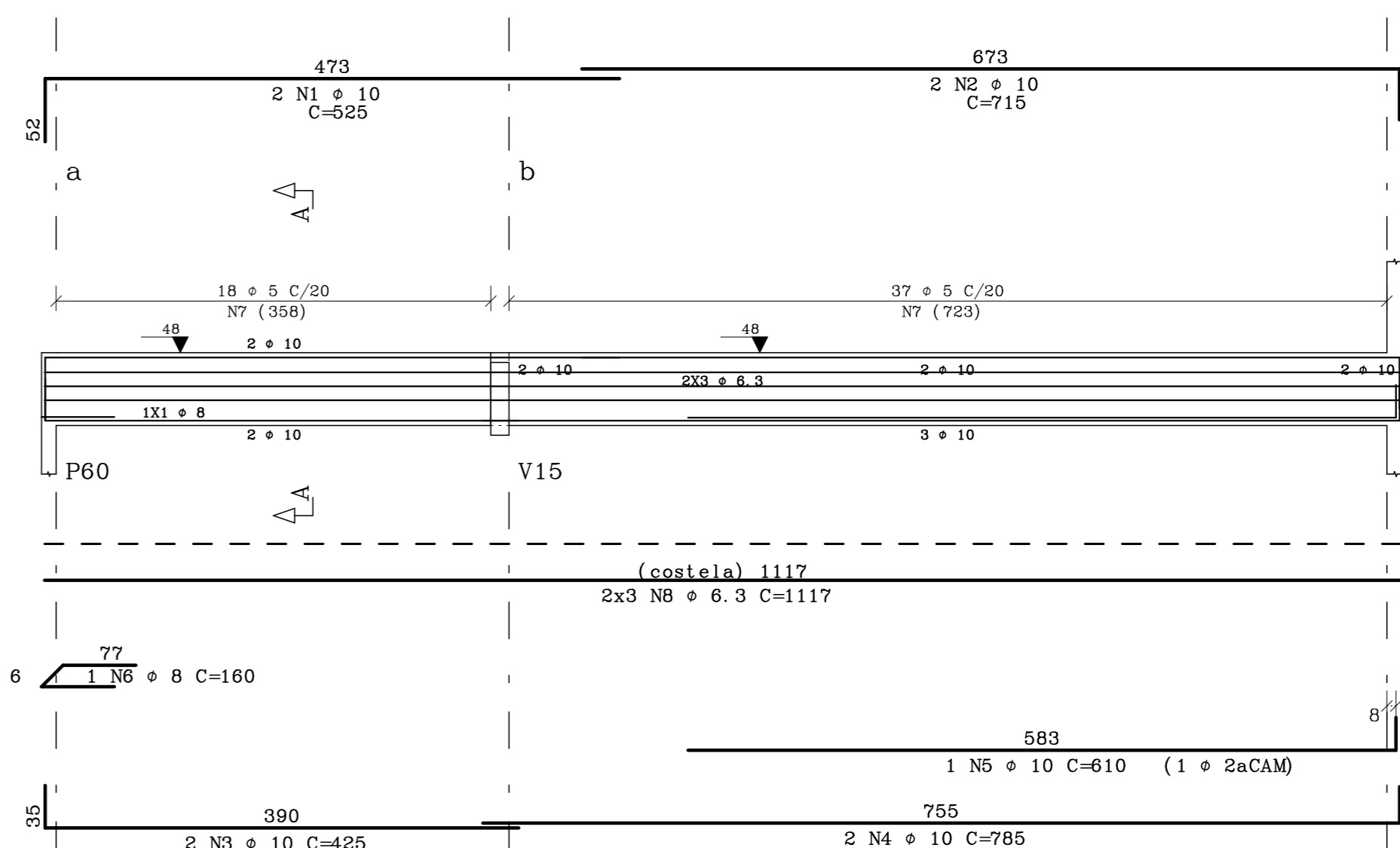
V5



V8 15/75



V9 12/60



ACO	POS	BIT (mm)	QUANT	COMPR (m)	UNID
V1	50A	1	8	2	950
V1	50A	2	8	2	910
V1	60B	3	5	43	105
V2	50A	1	8	2	950
V2	50A	2	8	2	910
V2	60B	3	5	27	100
V2	60B	4	5	14	105
V2	60B	5	5	2	327
V3	50A	1	10	2	840
V3	50A	2	8	2	705
V3	50A	3	8	2	840
V3	50A	4	8	2	190
V3	50A	5	10	2	876
V3	50A	6	8	4	295
V3	50A	7	8	2	155
V3	50A	8	8	2	555
V3	50A	9	8	2	308
V3	50A	10	8	1	160
V3	50A	11	8	1	160
V3	60B	12	5	65	100
V3	60B	13	5	48	100
V3	60B	14	5	9	105
V3	60B	15	5	2	672
V3	60B	16	5	4	301
V3	60B	17	5	2	284
V4	50A	1	10	2	526
V4	50A	2	8	2	1075
V4	50A	3	8	2	195
V4	50A	4	8	2	1010
V4	50A	5	8	2	435
V4	50A	6	8	2	1110
V4	50A	7	8	1	160
V4	60B	8	5	79	100
V4	60B	9	5	44	105
V4	60B	10	5	4	664
V4	60B	11	5	2	105
V4	60B	12	5	2	280

ACO	POS	BIT (mm)	QUANT	COMPR (m)	UNID
V5	50A	1	10	2	885
V5	50A	2	10	2	245
V5	50A	3	16	2	245
V5	50A	4	20	2	170
V5	50A	5	20	1	250
V5	50A	6	10	2	170
V5	50A	7	8	2	520
V5	50A	8	8	2	600
V5	50A	9	10	2	425
V5	50A	10	10	2	260
V5	50A	11	16	2	390
V5	50A	12	10	2	260
V5	50A	13	8	2	575
V5	50A	14	8	4	160
V5	60B	15	5	54	105
V5	60B	16	5	28	145
V5	60B	17	8	44	145
V5	60B	18	5	2	571
V5	60B	19	5	3	387
V5	60B	20	6.3	6	752
V5	60B	21	6.3	6	825
V5	60B	22	5	2	555
V6	50A	1	8	2	165
V6	50A	2	8	2	525
V6	50A	3	8	2	180
V6	50A	4	8	2	245
V6	50A	5	8	2	295
V6	50A	6	8	2	300
V6	50A	7	8	2	160
V6	50A	8	5	6	105
V6	50A	9	5	19	110
V6	50A	10	5	14	100
V6	50A	11	5	2	227
V6	50A	12	5	2	280
V7	50A	1	8	2	440
V7	50A	2	10	2	435
V7	60B	3	5	18	105
V7	60B	4	5	2	380
V8	50A	1	12.5	3	831
V8	50A	2	16	3	845
V8	50A	3	15	1	820
V8	50A	4	10	2	475
V8	50A	5	6.3	31	175
V8	50A	6	6.3	8	747
V9	50A	1	10	2	525
V9	50A	2	10	2	715
V9	50A	3	10	2	785
V9	50A	4	10	2	810
V9	50A	5	10	1	610
V9	50A	6	8	15	160
V9	50A	7	5	15	145
V9	50A	8	6.3	6	1117

ACO	BIT (mm)	COMPR (m)	PESO (kg)
50A	8	686	110
50A	10	300	75
50A	6.3	390	156
50A	10	141	89
50A	12.5	25	160
50A	16	100	28
50A	20	100	28
Peso Total	60B	= 11	110 kg
Peso Total	50A	=	533 kg

CONCRETO		CARGAS PARA DIMENSIONAMENTO	
Fck=	25 MPa	A/C Máx =	0.60
Fctm=	2.0 MPa	CARGA UTILIZAÇÃO	Kg/m2
Fctd=	2.0 MPa	REVESTIMENTO PISO	Kg/m2
MATERIAL	TITULO CERAMICO DE 6 PUROS		
REVESTIMENTO	cm		
MATERIAL DE ENCHIMENTO	Kgf/m3		
REVESTIMENTO	cm		

GOVERNO DO ESTADO DO PARANÁ
 SEIL - SECRETARIA DE INFRAESTRUTURA E LOGÍSTICA
 PARANÁ, EDIFICAÇÕES
 GERÊNCIA DE PROJETOS

PROPRIETÁRIO: GOVERNO DO ESTADO DO PARANÁ
 UNIDADE DE SAÚDE DA FAMÍLIA - PORTE II
 AUTOR DO PROJETO/REGISTRO PROJ: []
 RESPONSÁVEL TÉCNICO/REGISTRO PROJ: []

MUNICÍPIO: []
 SECRETARIA REGIONAL: []
 TÍTULO: []
 CONTRATAÇÃO: []

PROJETO: ESTRUTURAL
 DATA: []
 REVISÃO: []
 DATA: []

EST 1012