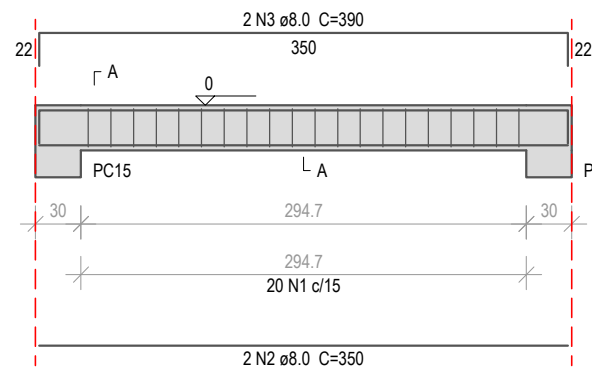
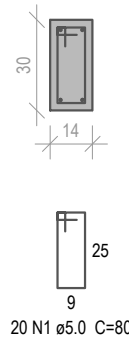


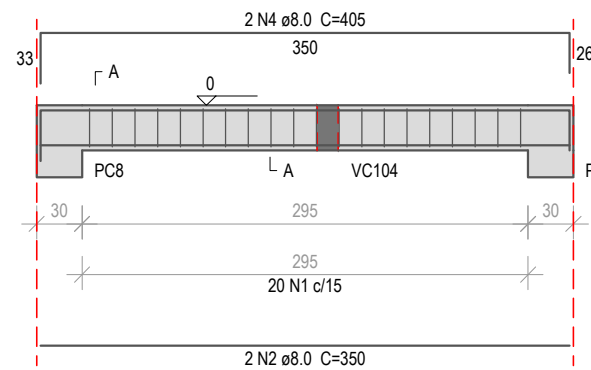
VC110
Esc 1:50



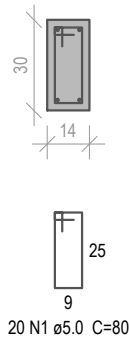
SEÇÃO A-A
Esc 1:25



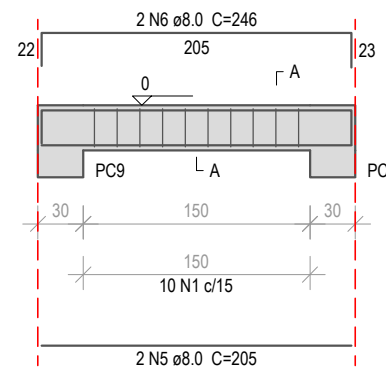
VC112
Esc 1:50



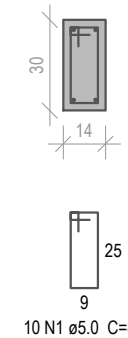
SEÇÃO A-A
Esc 1:25



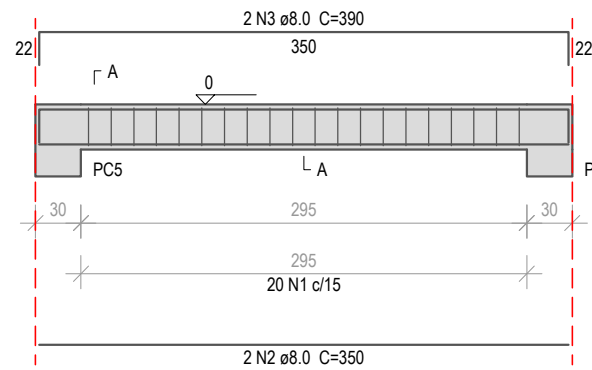
VC117
Esc 1:50



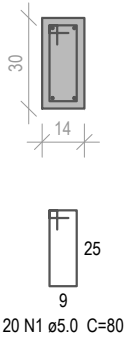
SEÇÃO A-A
Esc 1:25



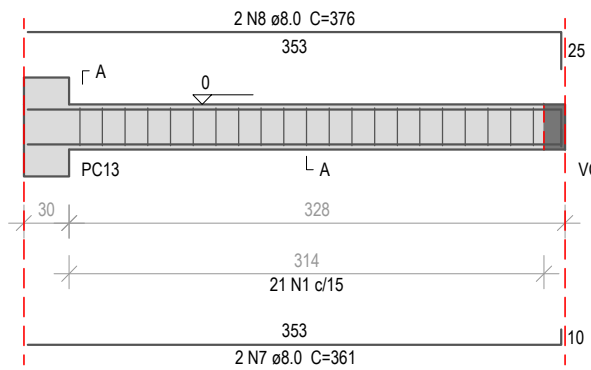
VC113
Esc 1:50



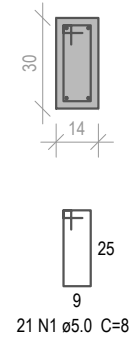
SEÇÃO A-A
Esc 1:25



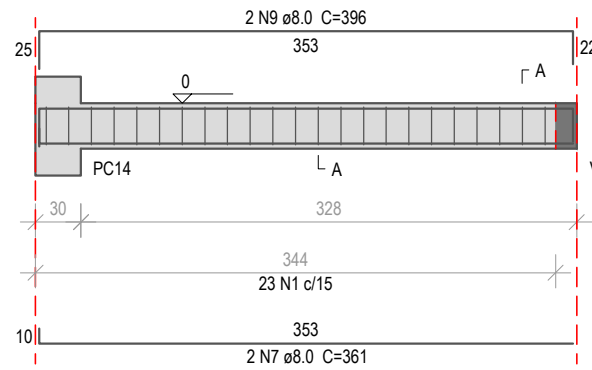
VC115
Esc 1:50



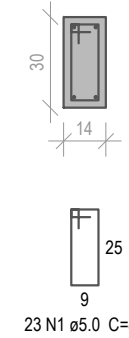
SEÇÃO A-A
Esc 1:25



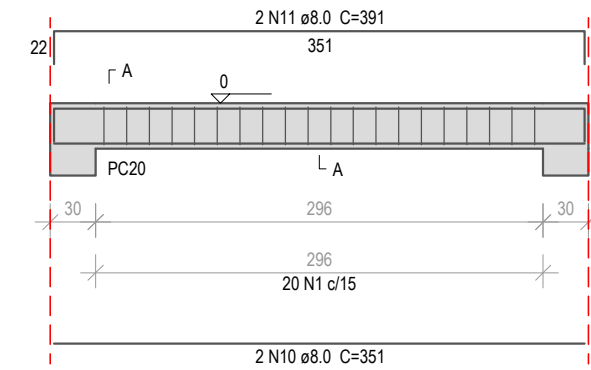
VC116
Esc 1:50



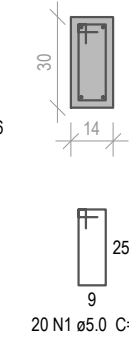
SEÇÃO A-A
Esc 1:25



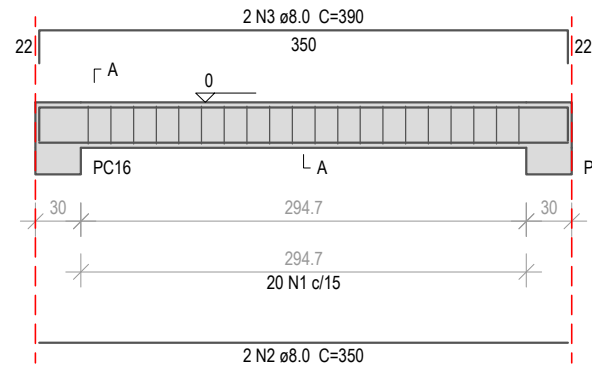
VC118
Esc 1:50



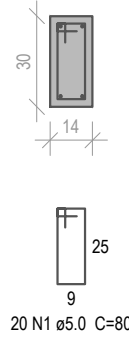
SEÇÃO A-A
Esc 1:25



VC119
Esc 1:50



SEÇÃO A-A
Esc 1:25



Relação do aço

VC110	VC112	VC113
VC110	VC116	VC117
VC115	VC119	
VC118		

AÇO	N	DIAM (mm)	QUANT	C.UNIT (cm)	C.TOTAL (cm)
CA60	1	5.0	154	80	12320
CA50	2	8.0	8	350	2800
	3	8.0	6	390	2340
	4	8.0	2	405	810
	5	8.0	2	205	410
	6	8.0	2	246	492
	7	8.0	4	361	1444
	8	8.0	2	376	752
	9	8.0	2	396	792
	10	8.0	2	351	702
	11	8.0	2	391	782

Resumo do aço

AÇO	DIAM (mm)	C.TOTAL (m)	QUANT + 10 % (Barras)	PESO + 10 % (kg)
CA50	8.0	113.3	11	49.2
CA60	5.0	123.2	12	20.9
PESO TOTAL (kg)				
CA50				49.2
CA60				20.9

Volume de concreto (C-20) = 0.99 m³
Área de forma = 19.99 m²

MUNICÍPIO DE PATO BRANCO - SECRETARIA DE ENGENHARIA E OBRAS
Rua Caramuru, 271 - Centro - 46 3223 2509 - engenharia@patobranco.pr.gov.br

PROJETO _____ PRANCHA _____

PROJETO ESTRUTURAL

8/13

CONTRATANTE
Prefeitura Municipal de Pato Branco

REFERÊNCIA
Casa Temática

DESENHO
Tobias

ESCALA
Indicada

DATA
05/2022

ESPECIFICAÇÃO
Vigas do pavimento Térreo

AUTOR DO PROJETO
Eng.º Civil Daniel Parcianello

ASS.

SC-072.040-6/D