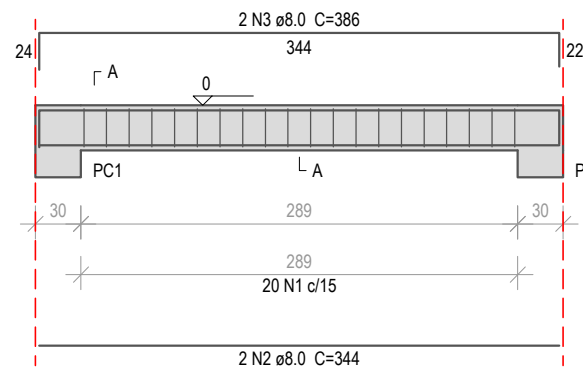


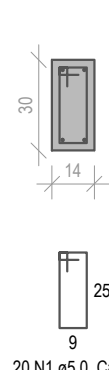
**VC101**

Esc 1:50



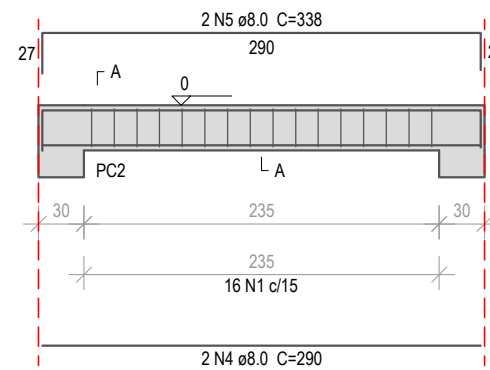
**SEÇÃO A-A**

Esc 1:25



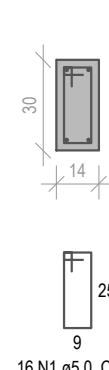
**VC102**

Esc 1:50



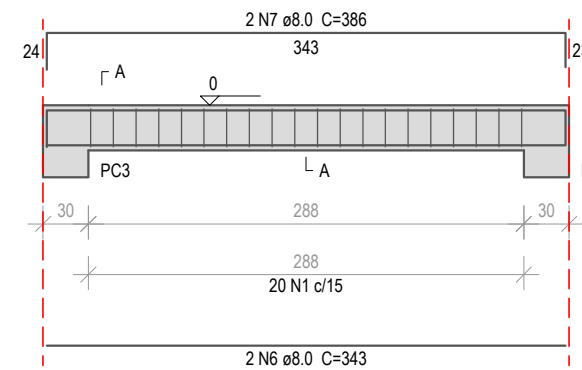
**SEÇÃO A-A**

Esc 1:25



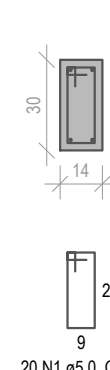
**VC103**

Esc 1:50



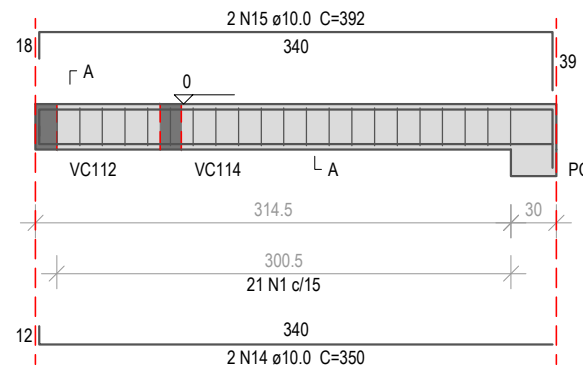
**SEÇÃO A-A**

Esc 1:25



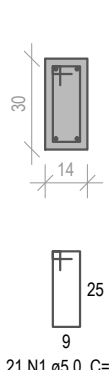
**VC104**

Esc 1:50



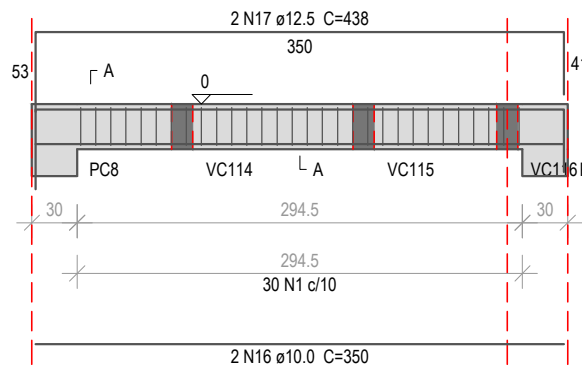
**SEÇÃO A-A**

Esc 1:25



**VC105**

Esc 1:50



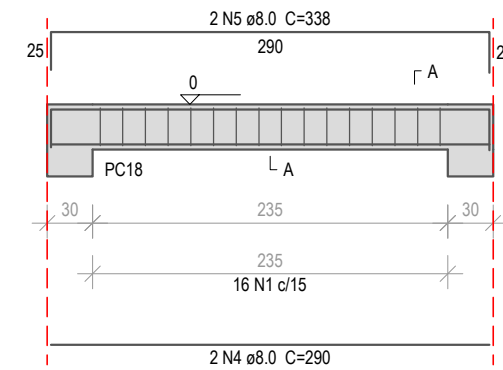
**SEÇÃO A-A**

Esc 1:25



**VC107**

Esc 1:50



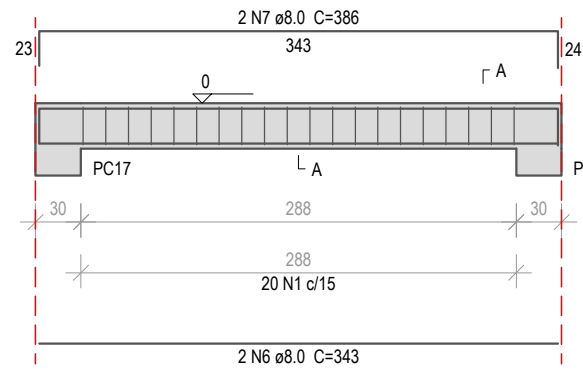
**SEÇÃO A-A**

Esc 1:25



**VC106**

Esc 1:50



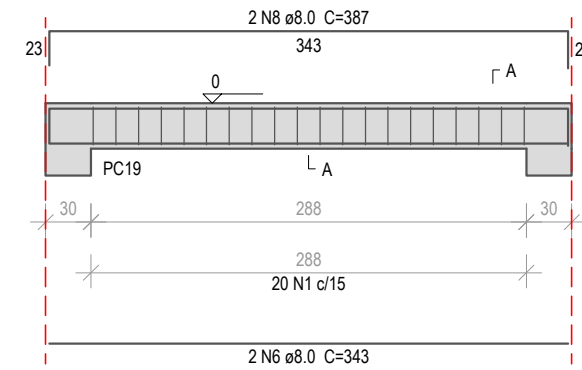
**SEÇÃO A-A**

Esc 1:25



**VC108**

Esc 1:50



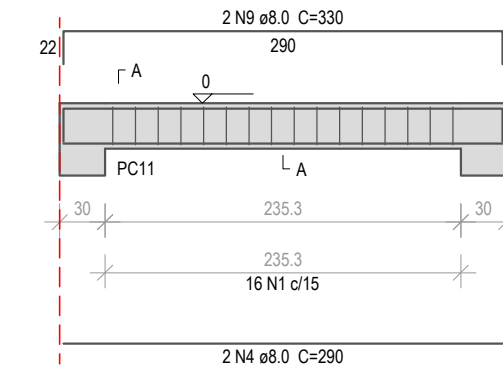
**SEÇÃO A-A**

Esc 1:25



**VC111**

Esc 1:50



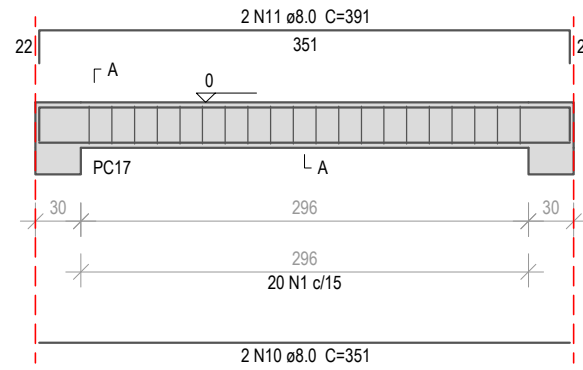
**SEÇÃO A-A**

Esc 1:25



**VC109**

Esc 1:50



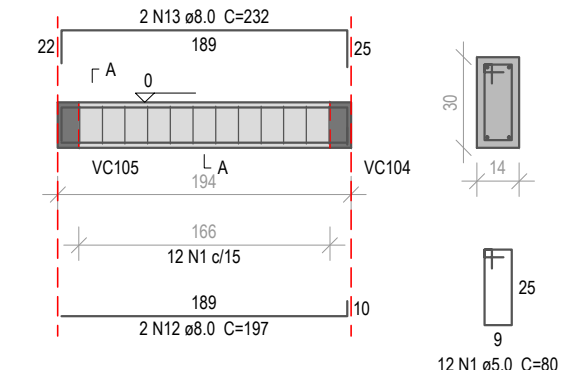
**SEÇÃO A-A**

Esc 1:25



**VC114**

Esc 1:50



**SEÇÃO A-A**

Esc 1:25



**Relação do aço**

ACO	N	DIAM (mm)	QUANT	C.UNIT (cm)	C.TOTAL (cm)
CA60	1	5.0	211	80	16880
CA50	2	8.0	2	344	688
	3	8.0	2	386	772
	4	8.0	6	290	1740
	5	8.0	4	338	1352
	6	8.0	6	343	2058
	7	8.0	4	386	1544
	8	8.0	2	387	774
	9	8.0	2	330	660
	10	8.0	2	351	702
	11	8.0	2	391	782
	12	8.0	2	197	394
	13	8.0	2	232	464
	14	10.0	2	350	700
	15	10.0	2	392	784
	16	10.0	2	350	700
	17	12.5	2	438	876

**Resumo do aço**

ACO	DIAM (mm)	C.TOTAL (m)	QUANT + 10% (Barras)	PESO + 10% (kg)
CA50	8.0	119.3	11	51.8
	10.0	21.9	3	14.8
	12.5	8.8	1	9.3
CA60	5.0	168.8	16	28.6
<b>PESO TOTAL (kg)</b>				
CA50				75.9
CA60				28.6

Volume de concreto (C-20) = 1.25 m³  
Área de forma = 26.1 m²

**MUNICÍPIO DE PATO BRANCO - SECRETARIA DE ENGENHARIA E OBRAS**  
Rua Caramuru, 271 - Centro - 46 3223 2509 - engenharia@patobranco.pr.gov.br

PROJETO

PRANCHA

**PROJETO ESTRUTURAL**

**7/13**

CONTRATANTE

**Prefeitura Municipal de Pato Branco**

REFERÊNCIA  
Casa Temática

DESENHO  
Tobias

ESCALA  
Indicada

DATA  
05/2022

ESPECIFICAÇÃO  
Vigas do pavimento Térreo

AUTOR DO PROJETO  
**Eng.º Civil Daniel Parcianello**

ASS.

SC-072.040-6/D