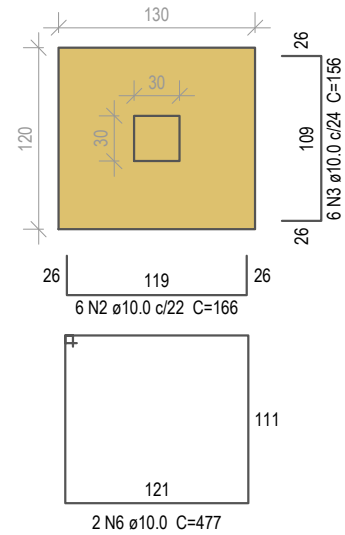
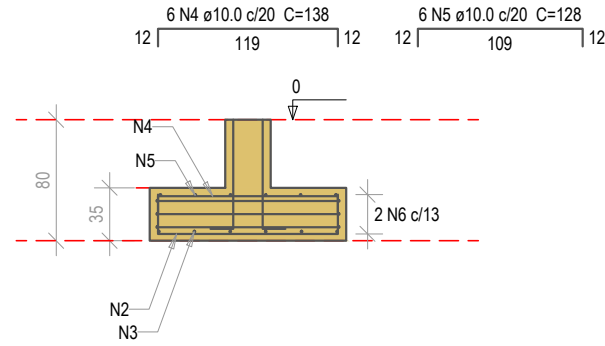


**SC1=SC17**

PLANTA  
Esc 1:50

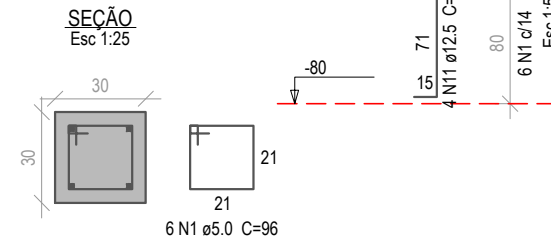


CORTE  
Esc 1:50



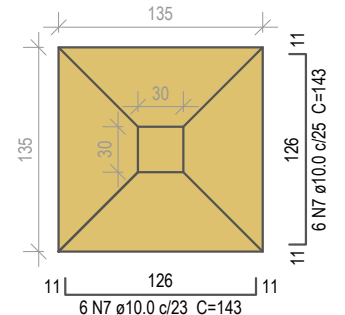
**PC1=PC17**

TÉRREO - L1

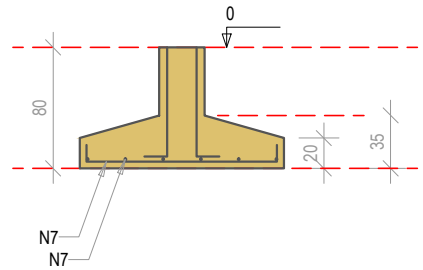


**SC2=SC3=SC11**

PLANTA  
Esc 1:50

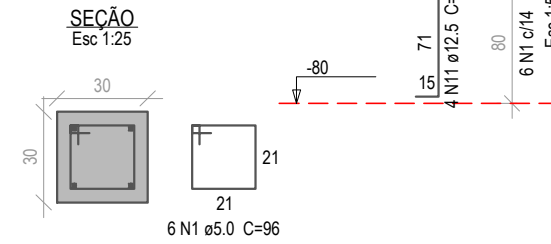


CORTE  
Esc 1:50



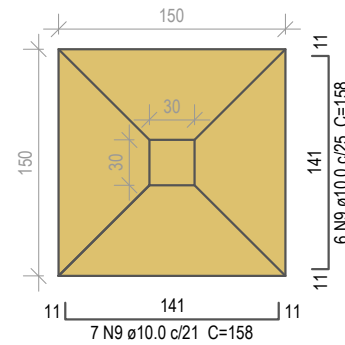
**PC2=PC3=PC11**

TÉRREO - L1

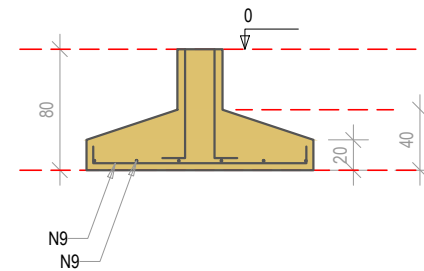


**SC5=SC6=SC15=SC16**

PLANTA  
Esc 1:50

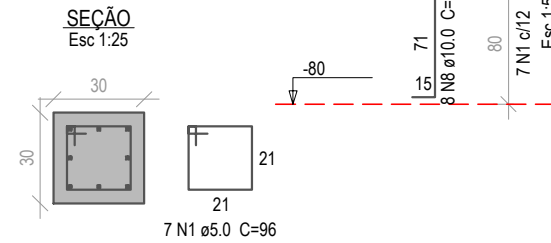


CORTE  
Esc 1:50



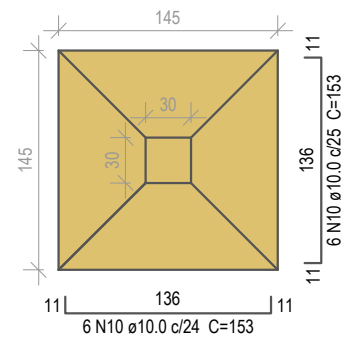
**PC5=PC6=PC15=PC16**

TÉRREO - L1

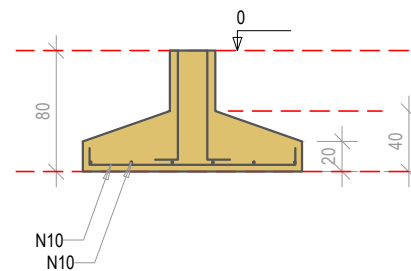


**SC8**

PLANTA  
Esc 1:50

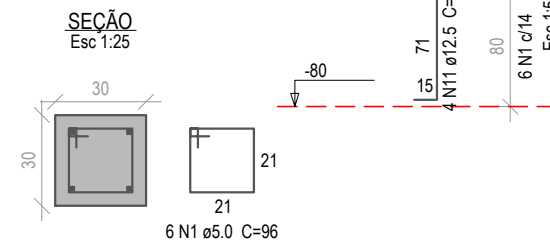


CORTE  
Esc 1:50



**PC8**

TÉRREO - L1



Relação do aço

AÇO	N	DIAM (mm)	QUANT	C.UNIT (cm)	C.TOTAL (cm)
2xSC1					
4xSC16					
SC8					
3xSC11					

AÇO	N	DIAM (mm)	QUANT	C.UNIT (cm)	C.TOTAL (cm)
CA60	1	5.0	64	96	6144
CA50	2	10.0	12	166	1992
	3	10.0	12	156	1872
	4	10.0	12	138	1656
	5	10.0	12	128	1536
	6	10.0	4	477	1908
	7	10.0	36	143	5148
	8	10.0	32	84	2688
	9	10.0	52	158	8216
	10	10.0	12	153	1836
	11	12.5	24	83	1992

Resumo do aço

AÇO	DIAM (mm)	C.TOTAL (m)	QUANT + 10 % (Barras)	PESO + 10 % (kg)
CA50	10.0	268.6	25	182.1
	12.5	20	2	21.1
CA60	5.0	61.5	6	10.4
PESO TOTAL (kg)				
CA50		203.2		
CA60		10.4		

Volume de concreto (C-20) = 6.06 m³  
Área de forma = 22.3 m²

MUNICÍPIO DE PATO BRANCO - SECRETARIA DE ENGENHARIA E OBRAS  
Rua Caramuru, 271 - Centro - 46 3223 2509 - engenharia@patobranco.pr.gov.br

PROJETO

**PROJETO ESTRUTURAL**

PRANCHA

**3 / 13**

CONTRATANTE

Prefeitura Municipal de Pato Branco

REFERÊNCIA

Casa Temática

DESENHO

Tobias

ESCALA

Indicada

DATA

05/2022

ESPECIFICAÇÃO

Fundações do pavimento Térreo

AUTOR DO PROJETO

Eng°. Civil Daniel Parcianello

ASS.

SC-072.040-6/D