

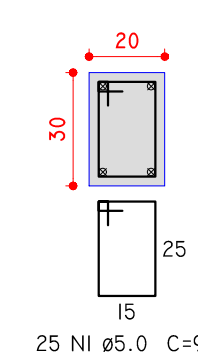
ARMAÇÃO POSITIVA DAS LAJES DO PAVIMENTO TAMPA

Esc: 1:50

PI=P2=P3=P4

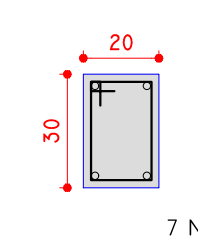
TAMPA - L2

SEÇÃO Esc: 1:20



BASE - L1

SEÇÃO Esc: 1:20



Relação do aço

AÇO	N	DIAM (mm)	QUANT	C.UNIT (cm)	C.TOTAL (cm)
CA60	1	5.0	100	92	9200
	2	5.0	144	96	13824
CA50	3	8.0	24	292	7008
	4	8.0	8	320	2560
	5	10.0	20	276	5520
	6	10.0	16	135	2160
	7	10.0	8	207	1656
	8	12.5	16	362	5792
	9	12.5	16	167	2672

Resumo do aço

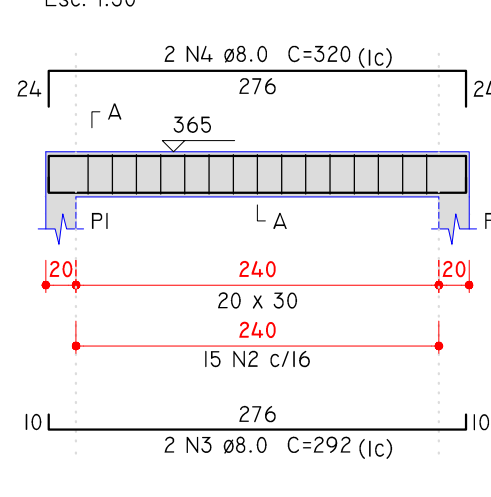
AÇO	DIAM (mm)	C.TOTAL (m)	PESO + 10 % (kg)
CA50	8.0	95.7	41.5
	10.0	93.4	63.3
	12.5	84.7	89.7
CA60	5.0	230.3	39
PESO TOTAL (kg)			
CA50		194.5	
CA60		39	

Volume de concreto (C-30) = 3.24 m³
Área de forma = 41.69 m²

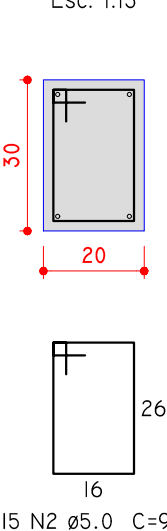
FORMA DO PAVIMENTO TAMPA (NÍVEL 365)

Esc: 1:50

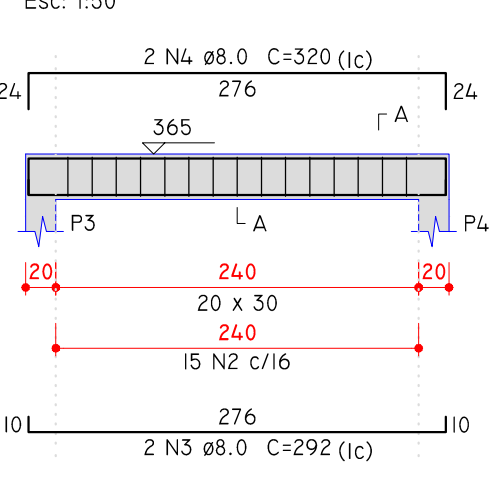
V1 (20 x 30)



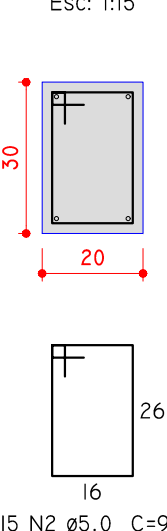
SEÇÃO A-A Esc: 1:15



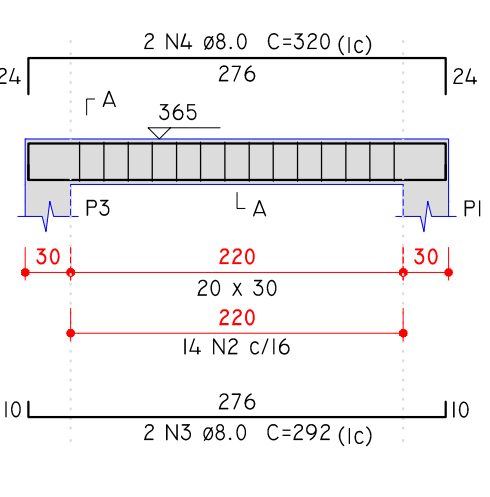
V2 (20 x 30)



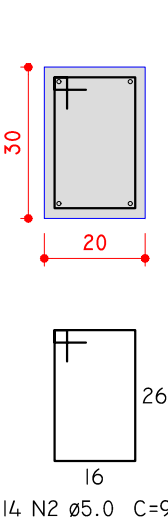
SEÇÃO A-A Esc: 1:15



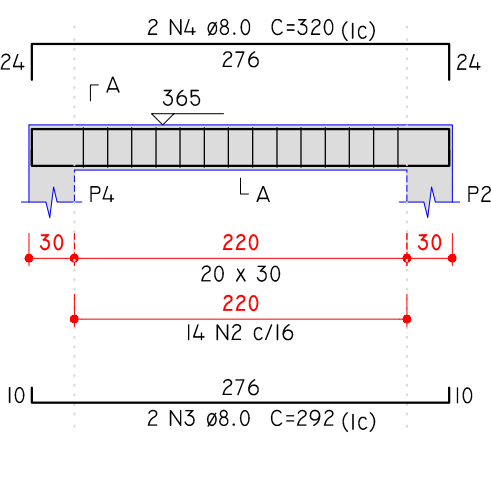
V3 (20 x 30)



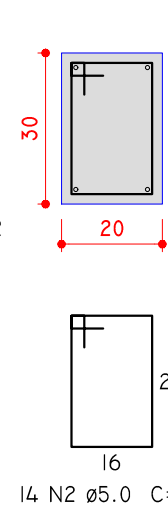
SEÇÃO A-A Esc: 1:15



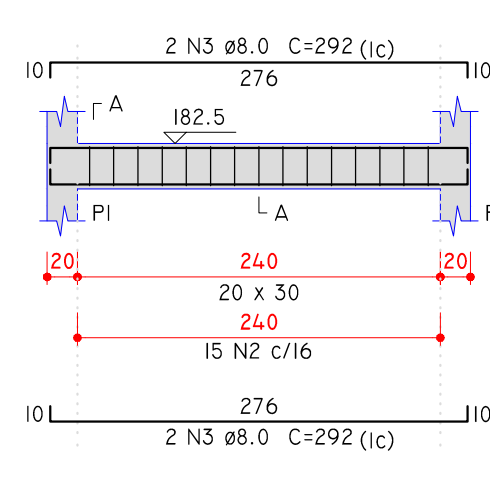
V4 (20 x 30)



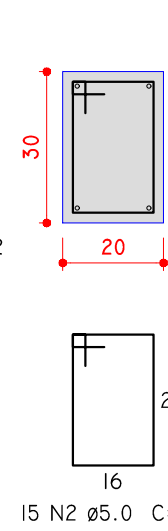
SEÇÃO A-A Esc: 1:15



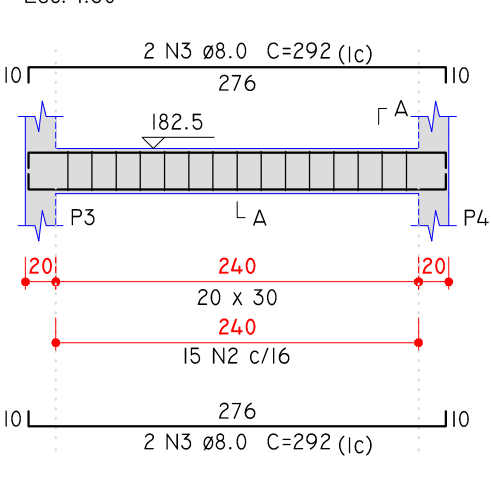
V5 (20 x 30)



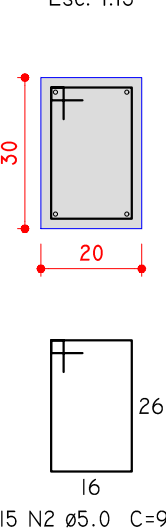
SEÇÃO A-A Esc: 1:15



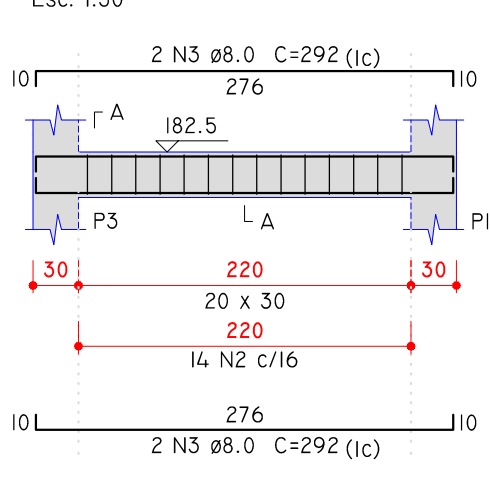
V6 (20 x 30)



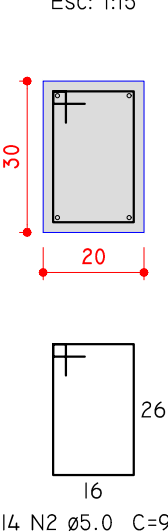
SEÇÃO A-A Esc: 1:15



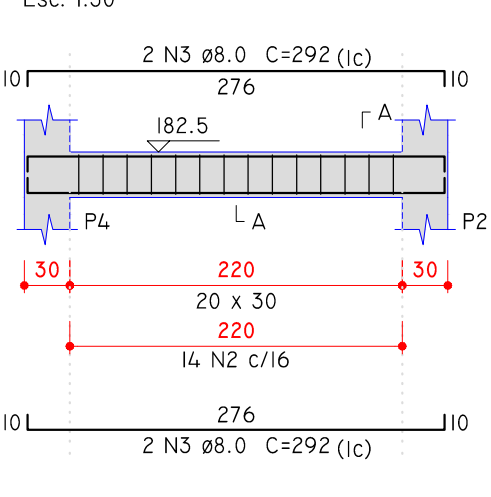
V7 (20 x 30)



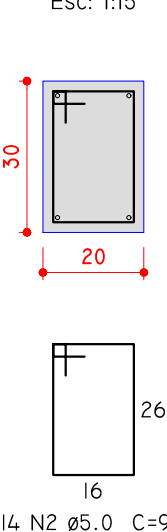
SEÇÃO A-A Esc: 1:15



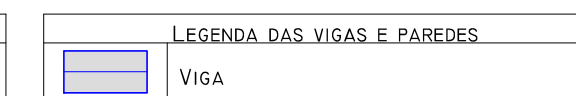
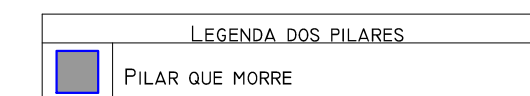
V8 (20 x 30)



SEÇÃO A-A Esc: 1:15



CARACTERÍSTICAS DOS MATERIAIS		
FCK (KGf/cm ²)	ECS (KGf/cm ²)	ABATIMENTO (cm)
300	268384	16.00



ALGETEC ENGENHARIA E CONSTRUÇÃO

Rua João Pessoa, 880 - sl B - Santa Terezinha
Pato Branco/PR
46. 99102 2782
www.algetec.eng.br

PROJETO ESTRUTURAL

Resp. Técnico
Eng. Civil Daniel Parcianello, CREA: 072040/D
Eng. Civil André Mateus Canan, CREA: 193875/D
Eng. Civil Loriane C. Parcianello, CREA: 172355/D

Proprietário
Município de Pato Branco - PR

End. Rua Jaciretã, Pato Branco/PR

Data 23/09/2021

Obra Teatro Municipal Naura Rigon

Escala Indicada

Referência CISTERNA 2

93
93