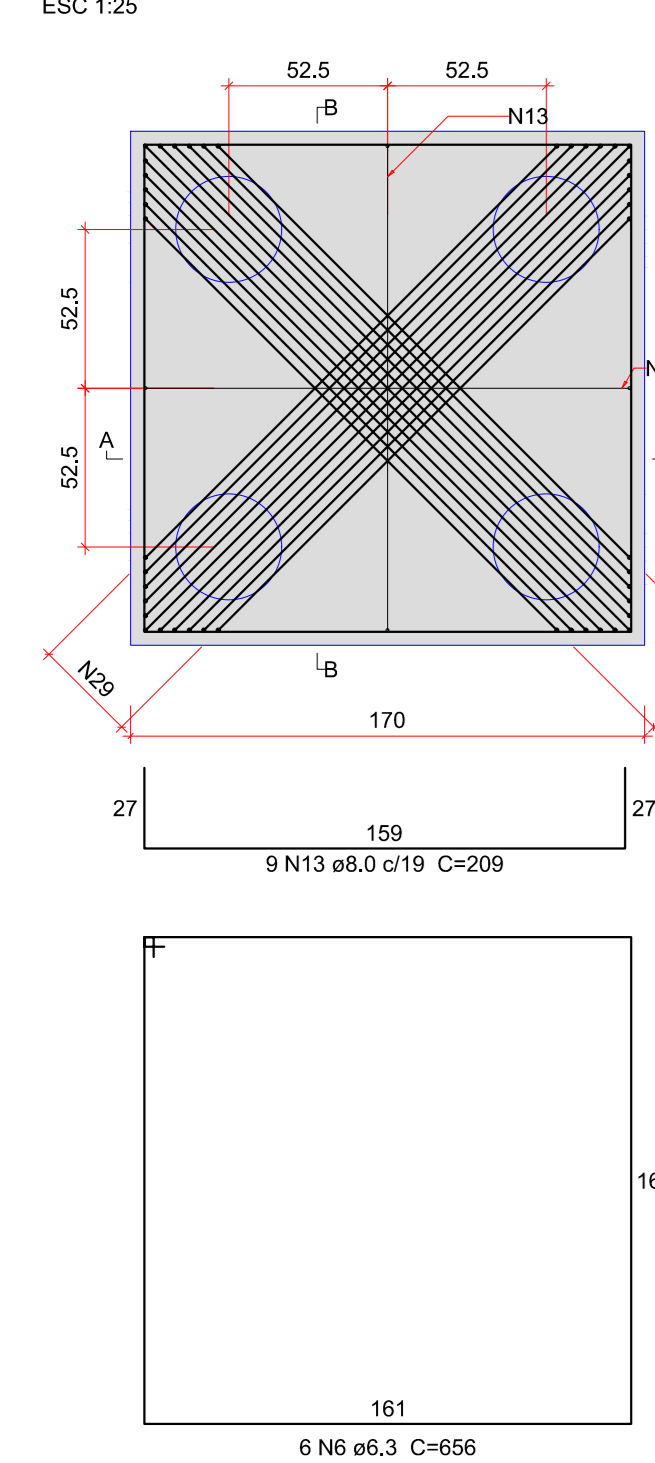
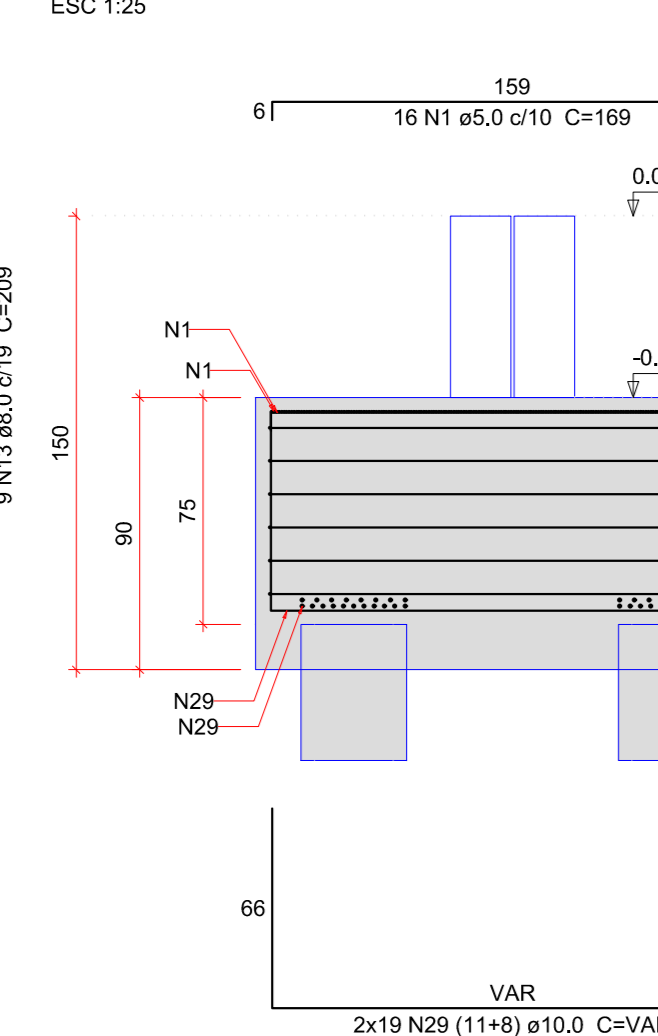


**B7-8 (existente, romper e refazer bloco)**

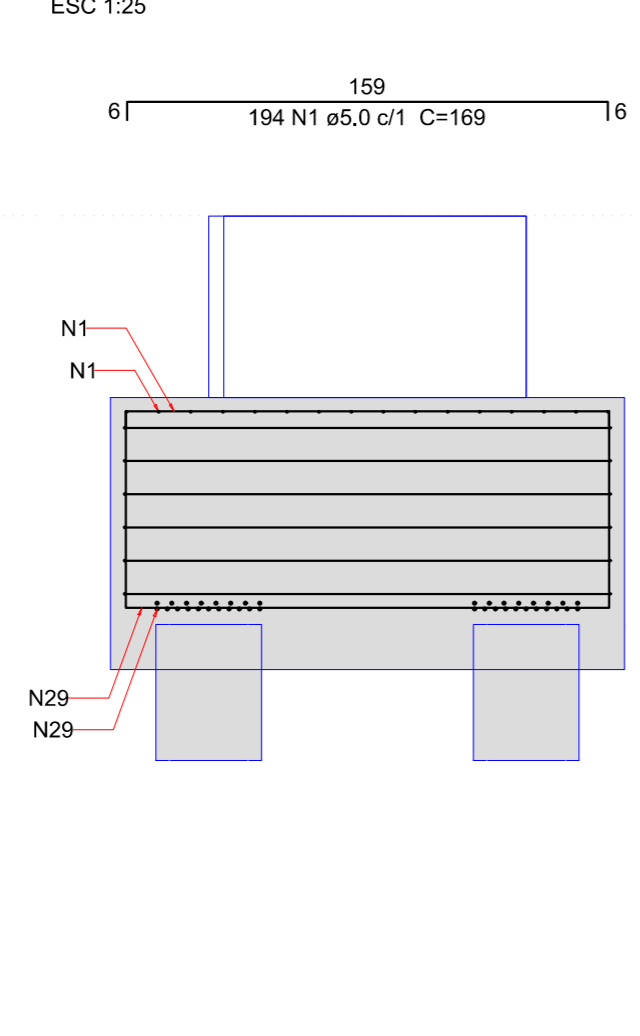
4x35  
PLANTA  
ESC 1:25



CORTE A-A  
ESC 1:25

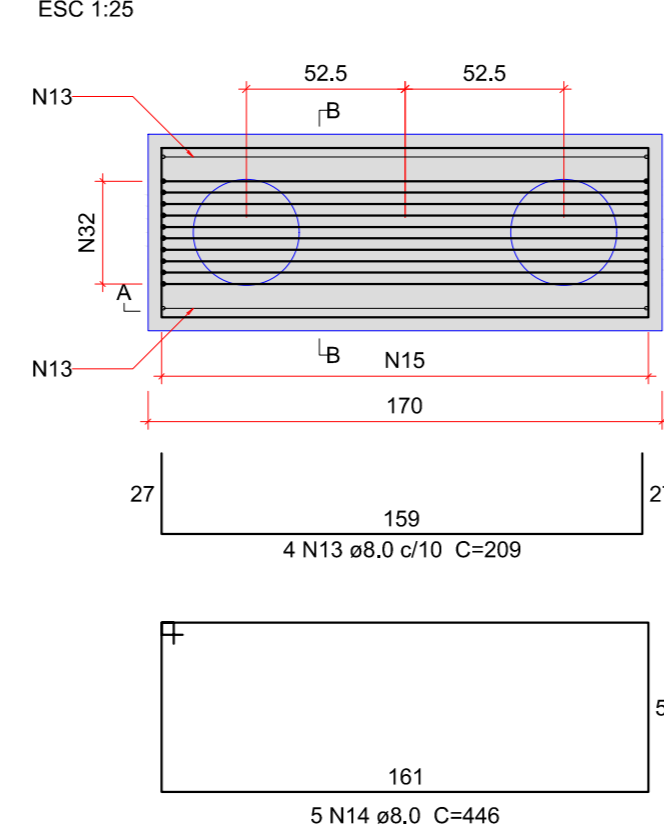


CORTE B-B  
ESC 1:25

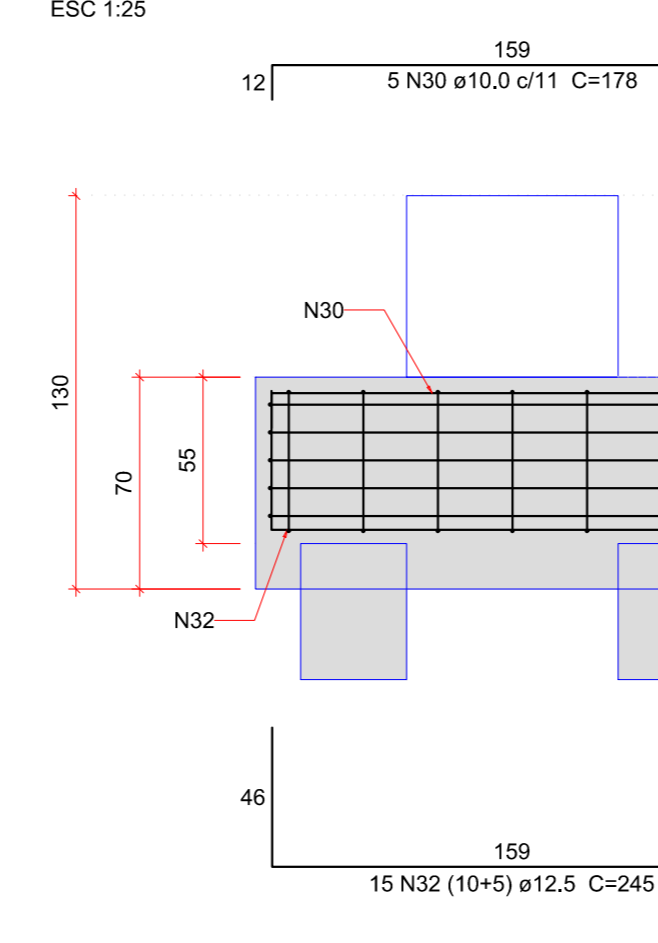


**B91 (executar)**

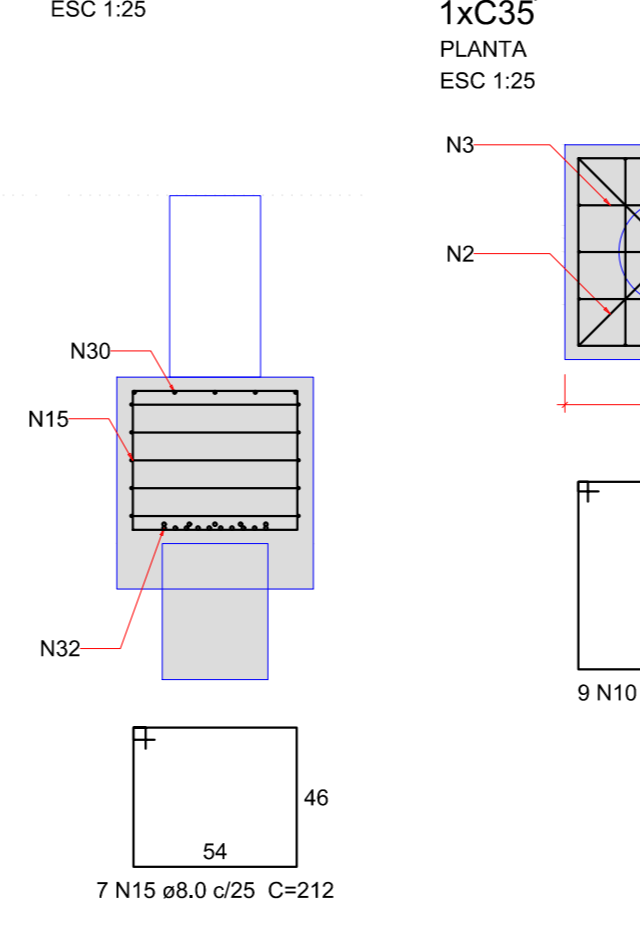
2xC35  
PLANTA  
ESC 1:25



CORTE A-A  
ESC 1:25

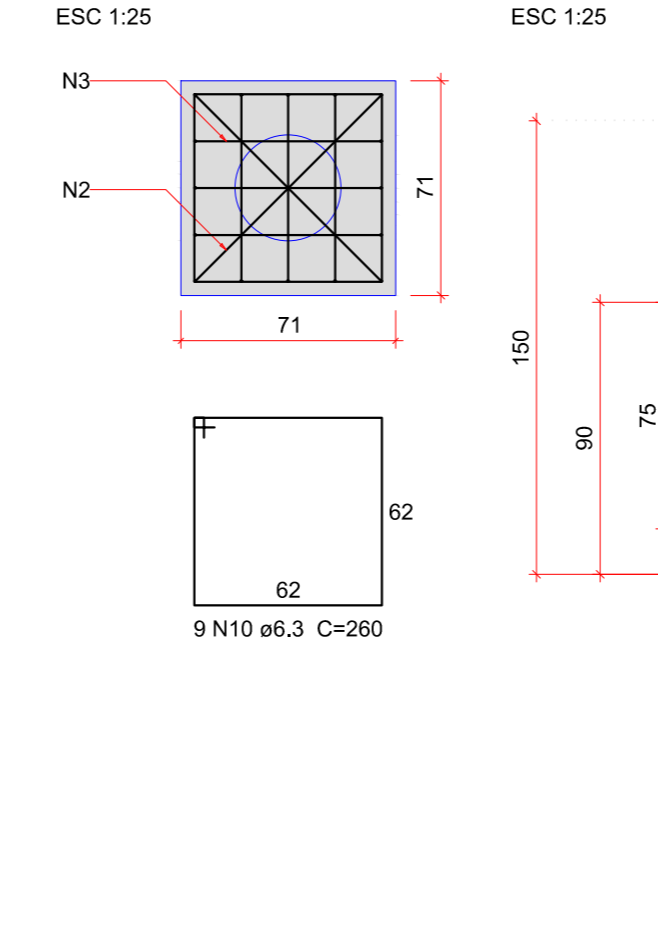


CORTE B-B  
ESC 1:25

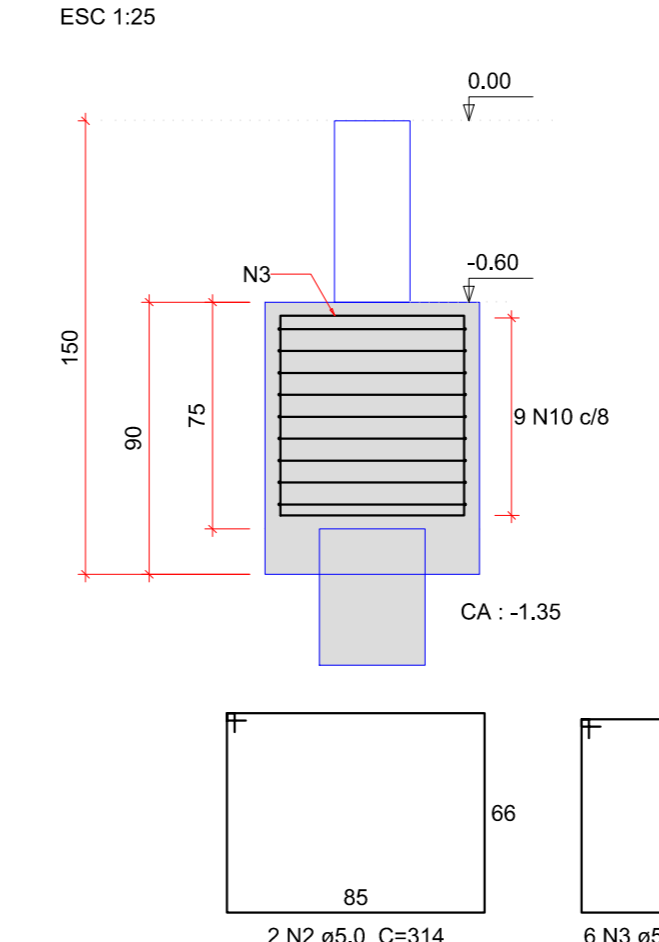


**B122 (existente, romper e refazer bloco)**

1xC35  
PLANTA  
ESC 1:25

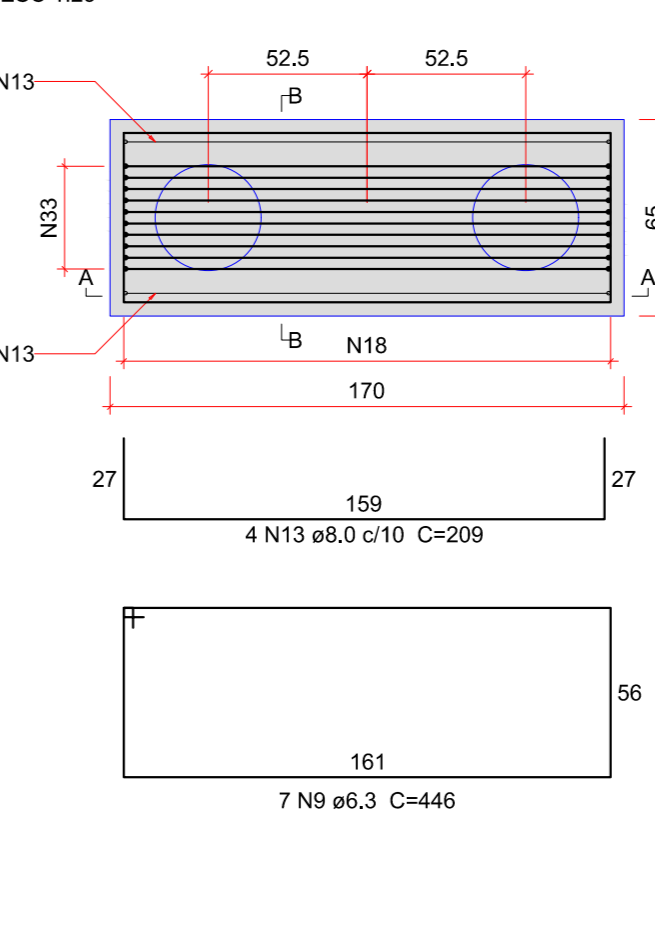


CORTE A-A  
ESC 1:25

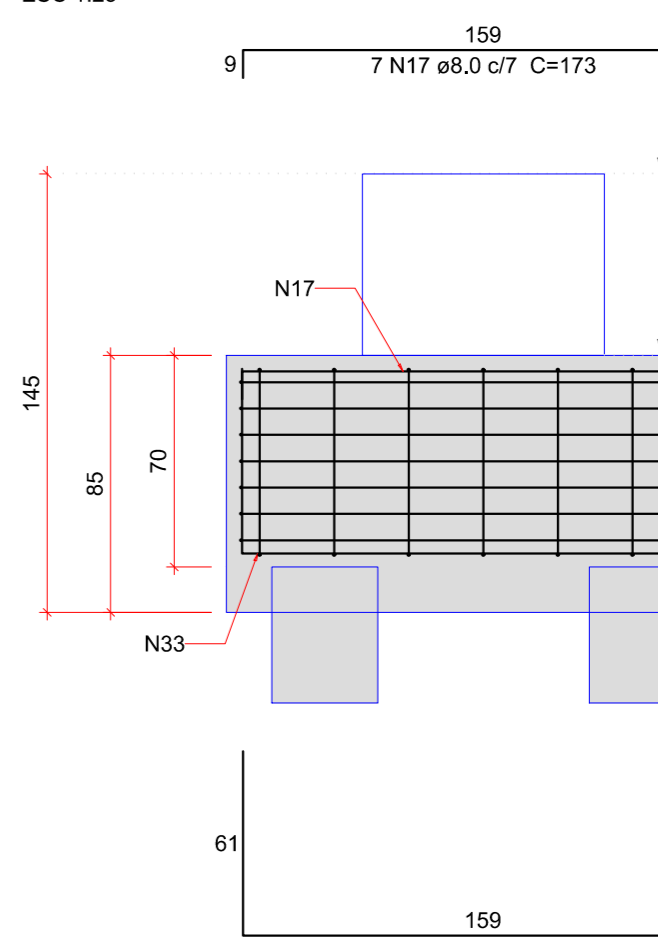


**B103 (existente, romper e refazer bloco)**

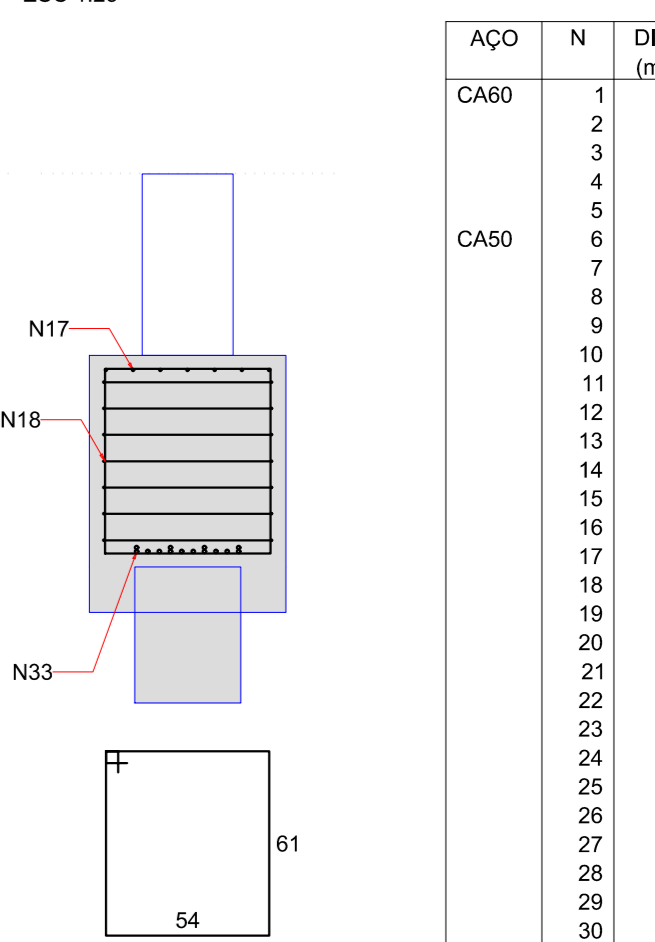
2xC35  
PLANTA  
ESC 1:25



CORTE A-A  
ESC 1:25



CORTE B-B  
ESC 1:25



**Relação do aço**

CAO	N	DIAM (mm)	QUANT	CUNTA (cm)	C.TOTAL (cm)
CA60	1	5.0	421	169	71149
CA60	2	5.0	2	314	628
CA60	3	5.0	6	290	1560
CA60	4	5.0	14	170	2380
CA60	5	5.0	32	446	14272
CA60	6	6.3	12	656	7872
CA60	7	6.3	4	324	1296
CA60	8	6.3	8	262	2096
CA60	9	6.3	7	446	3122
CA60	10	6.3	9	260	2340
CA60	11	6.3	7	476	3332
CA60	12	6.3	6	171	1026
CA60	13	8.0	42	209	8778
CA60	14	8.0	5	446	2230
CA60	15	8.0	7	212	1484
CA60	16	8.0	20	304	6080
CA60	17	8.0	7	173	1211
CA60	18	8.0	7	242	1694
CA60	19	8.0	24	210	5040
CA60	20	8.0	42	214	8988
CA60	21	8.0	4	224	896
CA60	22	8.0	7	188	1516
CA60	23	8.0	8	222	1776
CA60	24	8.0	4	174	696
CA60	25	8.0	4	225	900
CA60	26	8.0	8	189	1512
CA60	27	8.0	38	478	2306
CA60	28	8.0	8	262	2096
CA60	29	10.0	38	VAR	VAR
CA60	30	10.0	5	178	890
CA60	31	10.0	15	247	3705
CA60	32	12.5	15	245	3675
CA60	33	12.5	14	275	3850
CA60	34	12.5	8	246	1968
CA60	35	12.5	22	VAR	VAR
CA60	36	16.0	8	269	2152
CA60	37	16.0	5	245	1225
CA60	38	16.0	10	310	3100

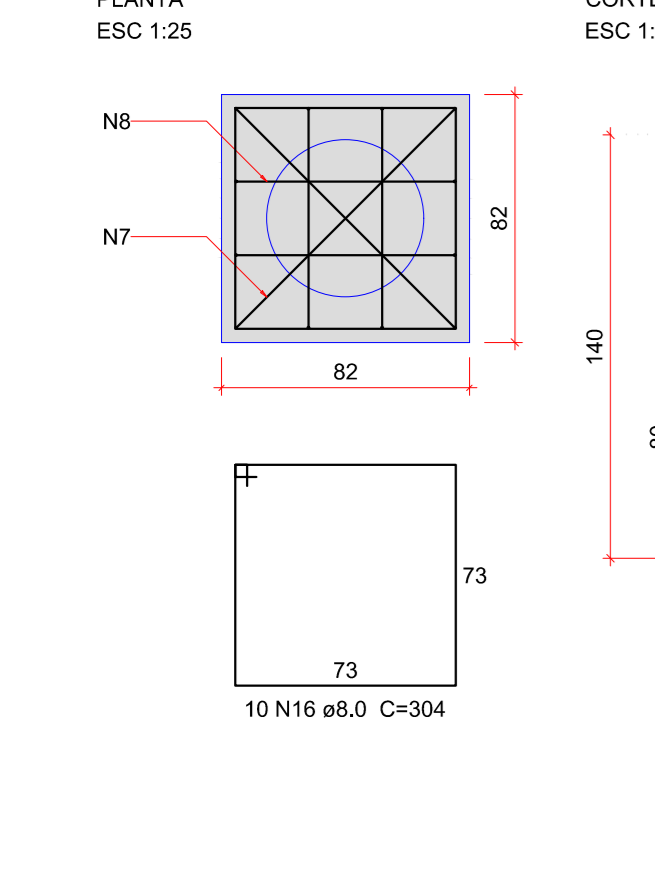
**Resumo do aço**

CAO	DIAM (mm)	C.TOTAL (m)	PESO < 10 % (kg)
CA50	6.3	210.9	56.8
CA50	8.0	470.9	204.4
CA50	10.0	154.7	104.9
CA50	12.5	191.7	167
CA50	16.0	64.8	112.5
CA50	5.0	899.9	102.6
<b>CA50</b>		<b>645.5</b>	<b>152.6</b>

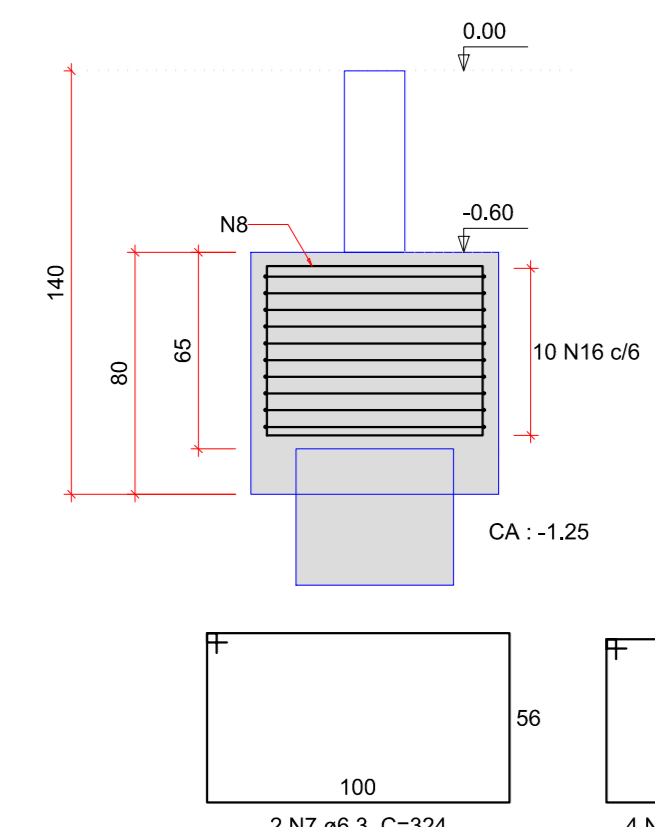
PESO TOTAL (kg): 152.6  
 Volume de concreto (C-30) = 14.65 m³  
 Área de forma = 55.59 m²

**B99 (existente, manter e chumbar esperas especificadas)**

B100, B101 (executar)  
1xC52  
PLANTA  
ESC 1:25

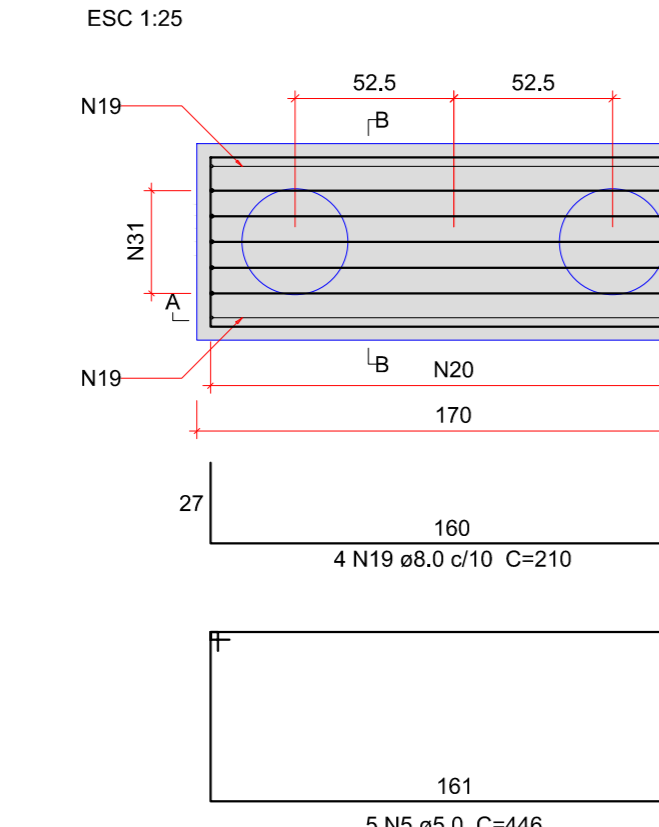


CORTE A-A  
ESC 1:25

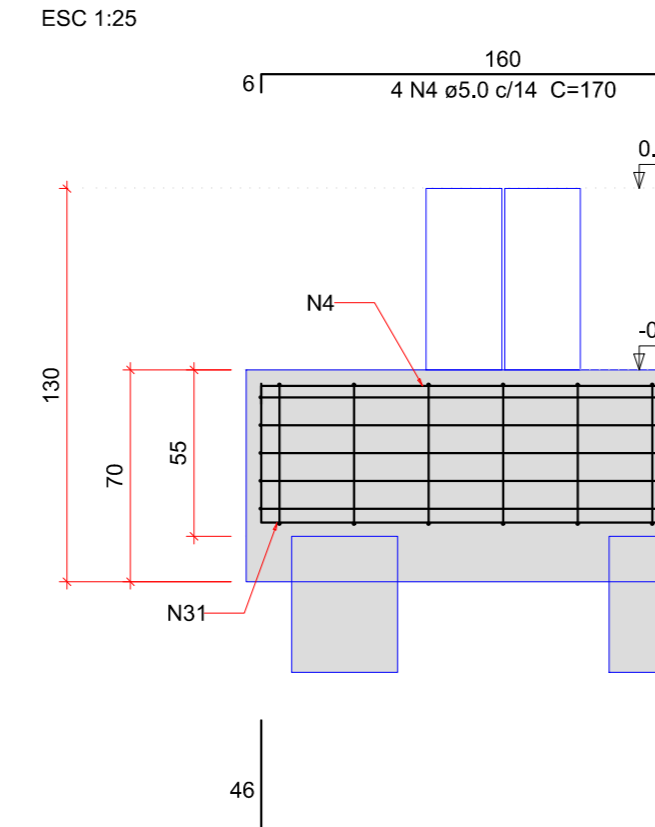


**B44-45 (executar)**

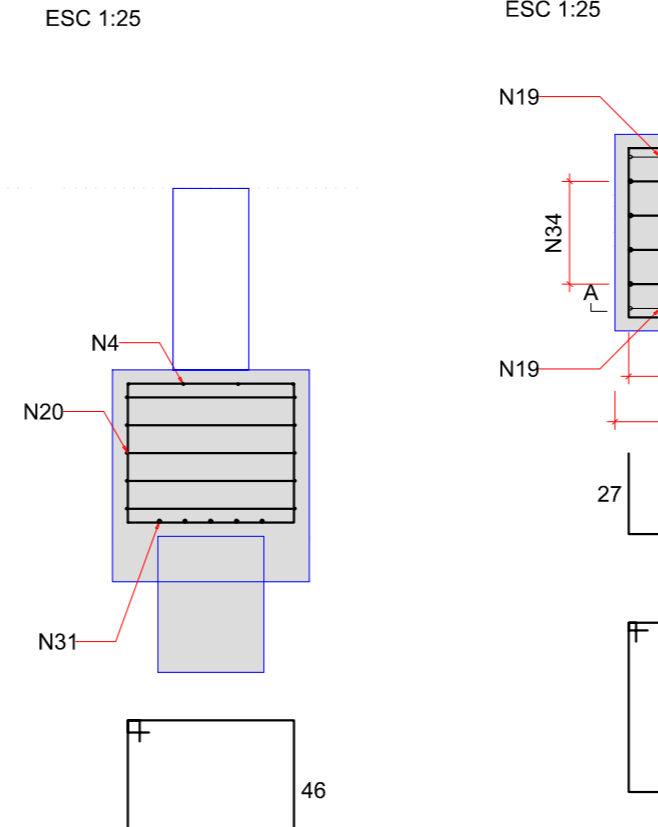
2xC35  
PLANTA  
ESC 1:25



CORTE A-A  
ESC 1:25

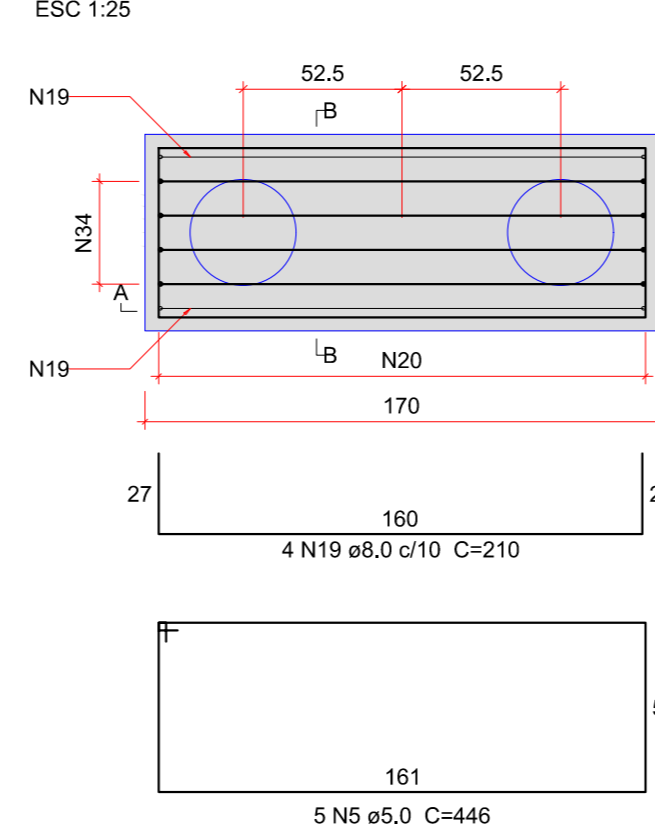


CORTE B-B  
ESC 1:25

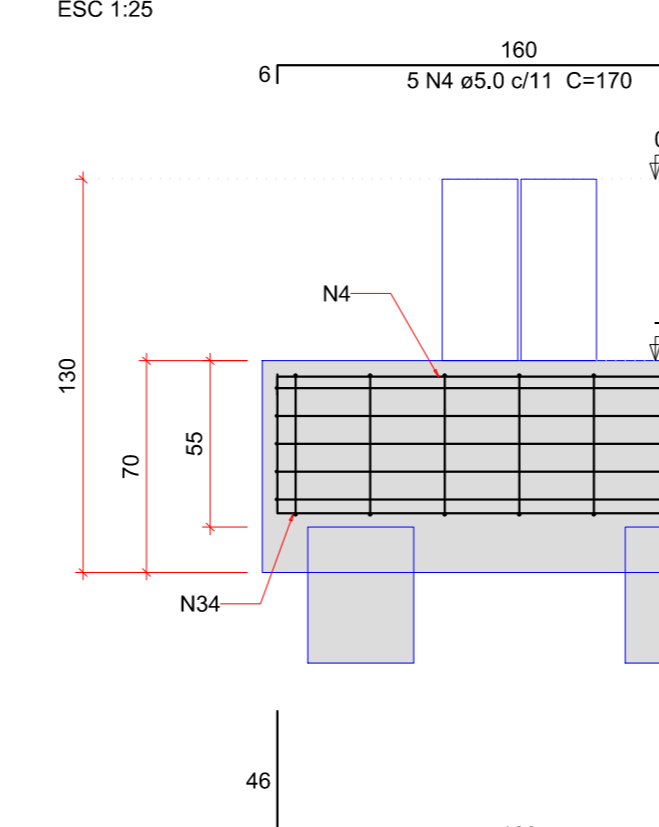


**B30-31 (executar)**

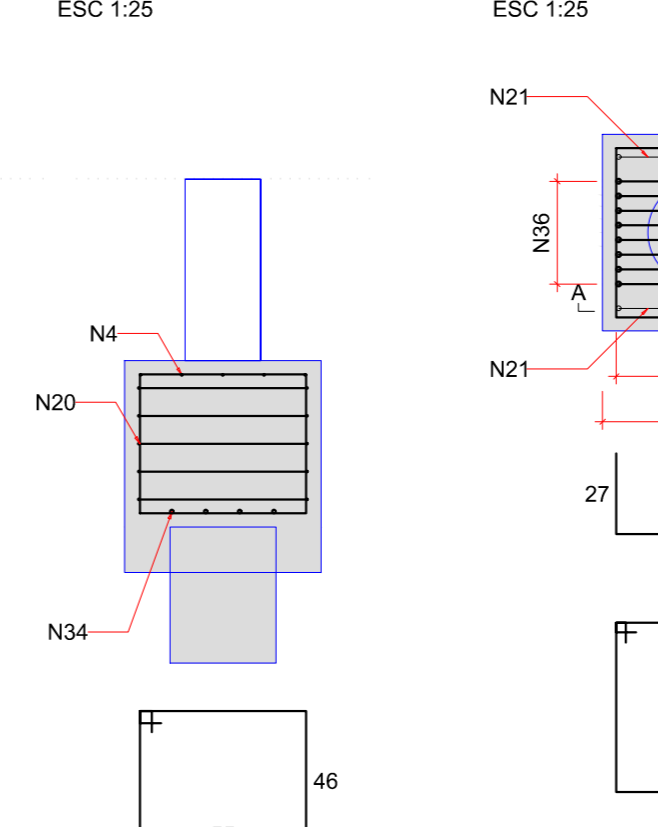
2xC35  
PLANTA  
ESC 1:25



CORTE A-A  
ESC 1:25

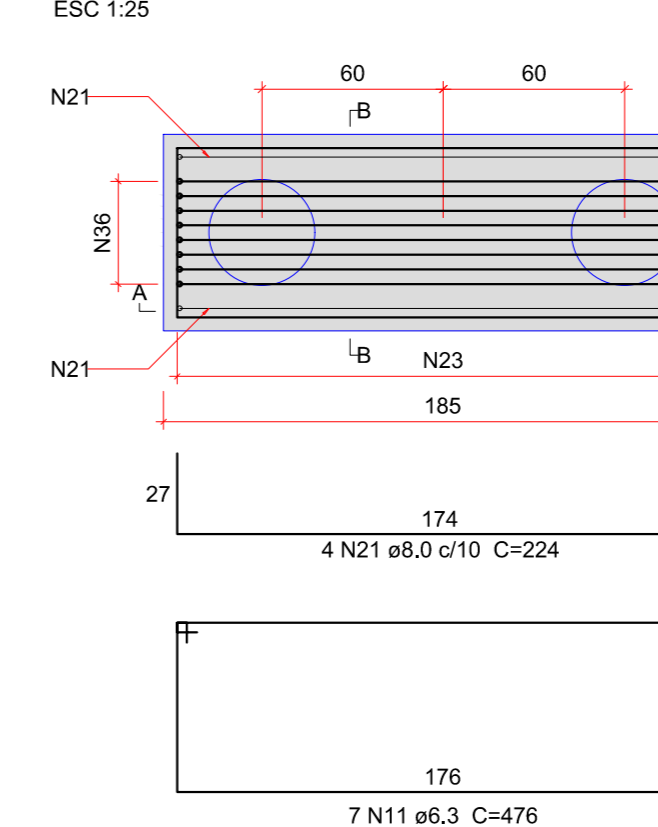


CORTE B-B  
ESC 1:25

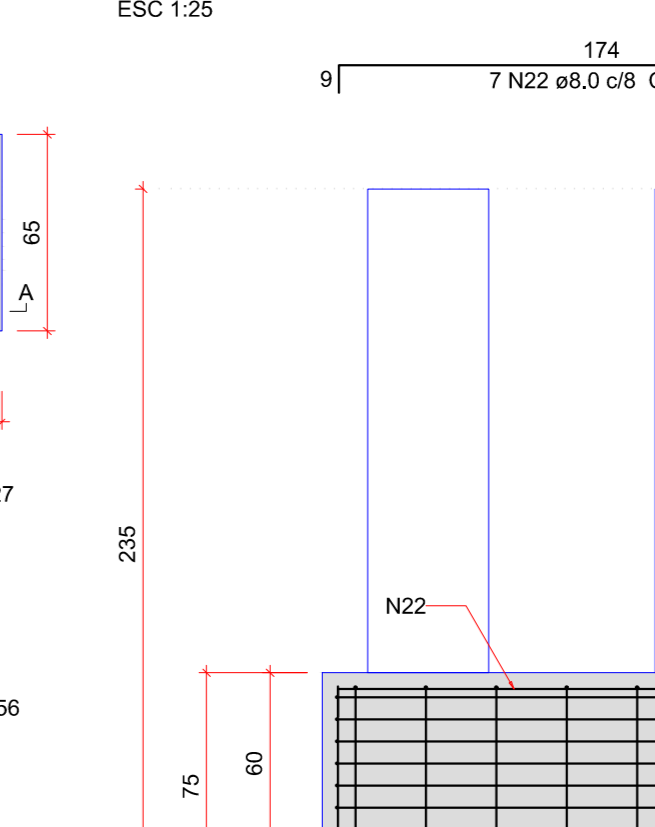


**B38-39 (existente, romper e refazer bloco)**

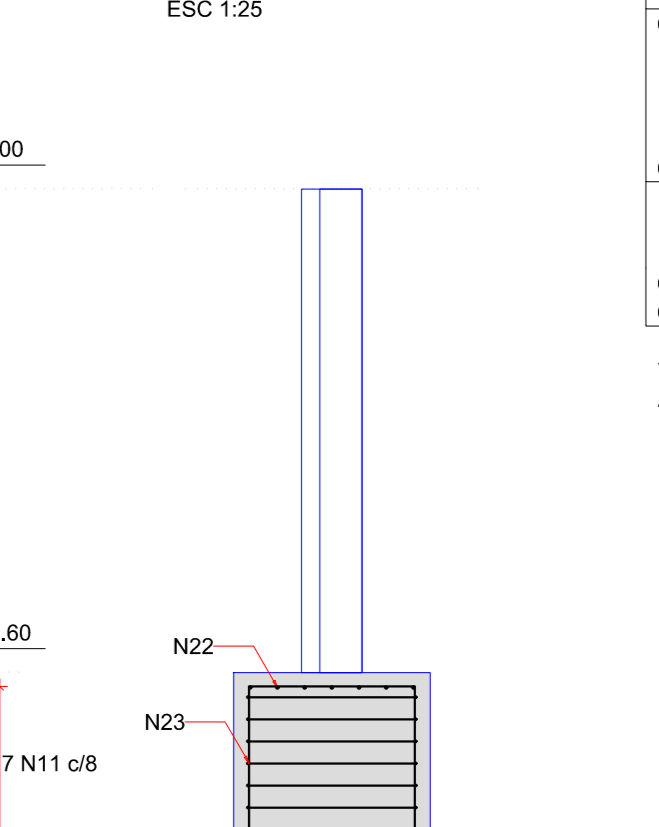
2xC35  
PLANTA  
ESC 1:25



CORTE A-A  
ESC 1:25

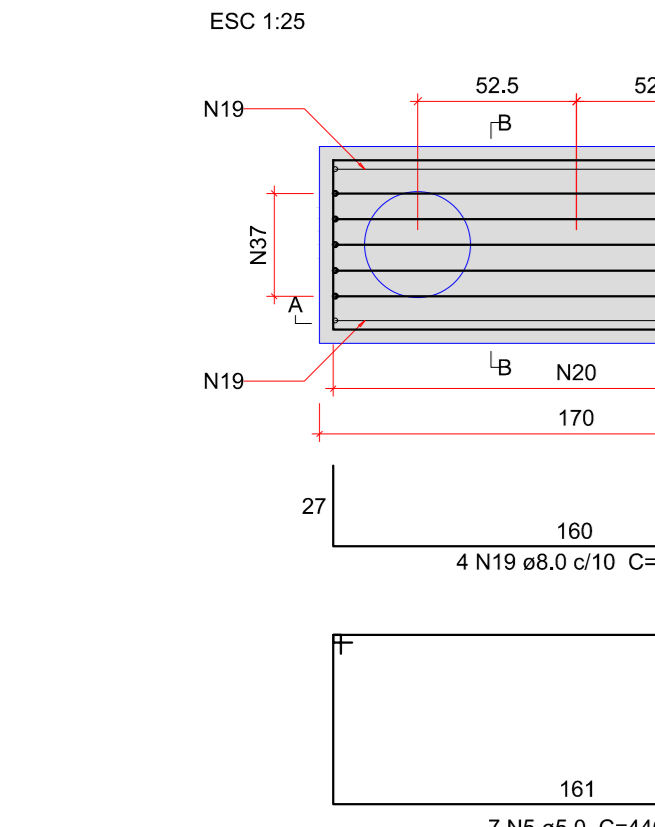


CORTE B-B  
ESC 1:25

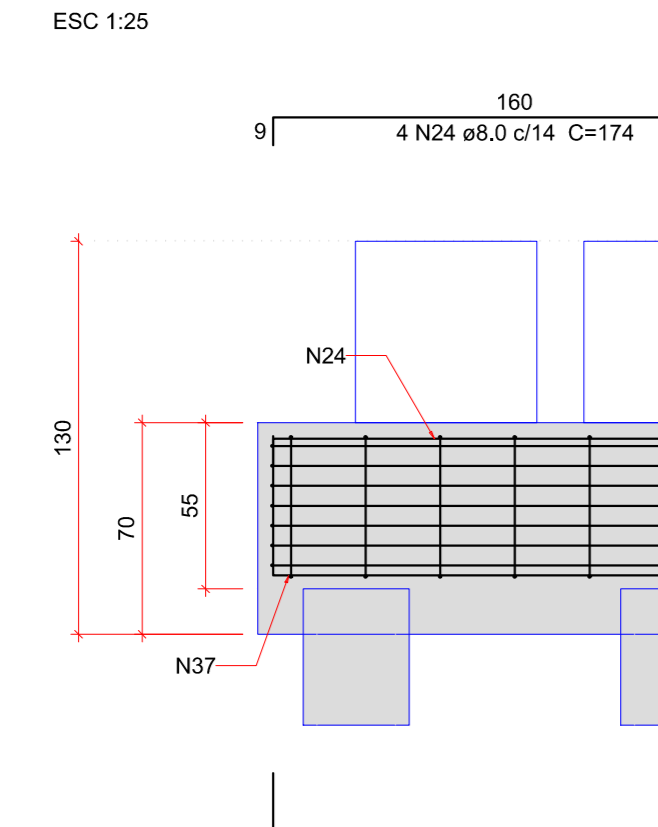


**B53-56 (existente, romper e refazer bloco)**

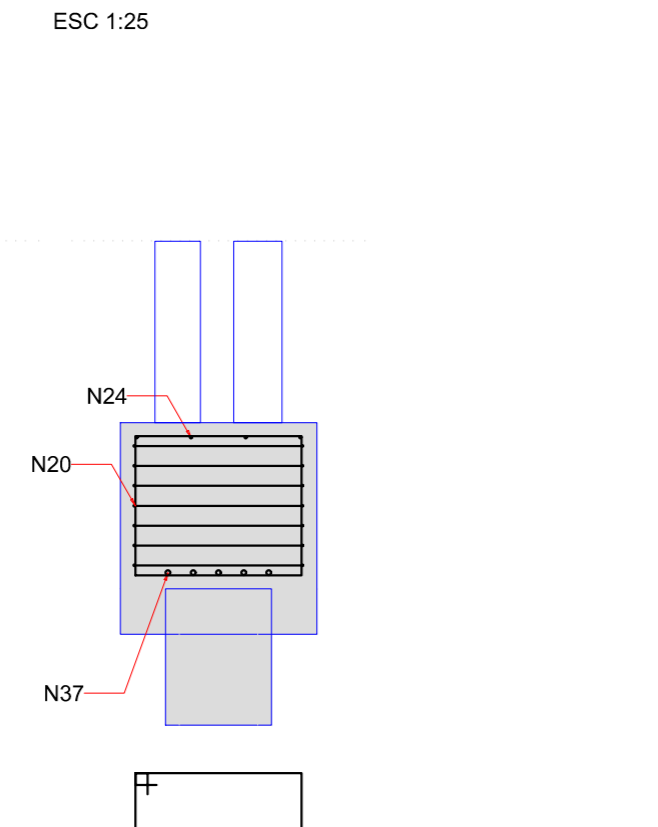
2xC35  
PLANTA  
ESC 1:25



CORTE A-A  
ESC 1:25

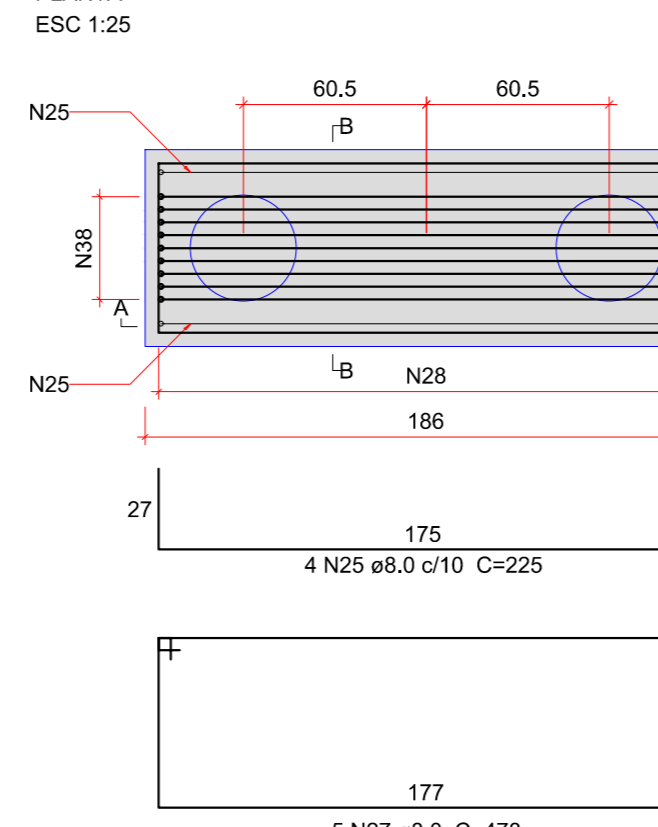


CORTE B-B  
ESC 1:25

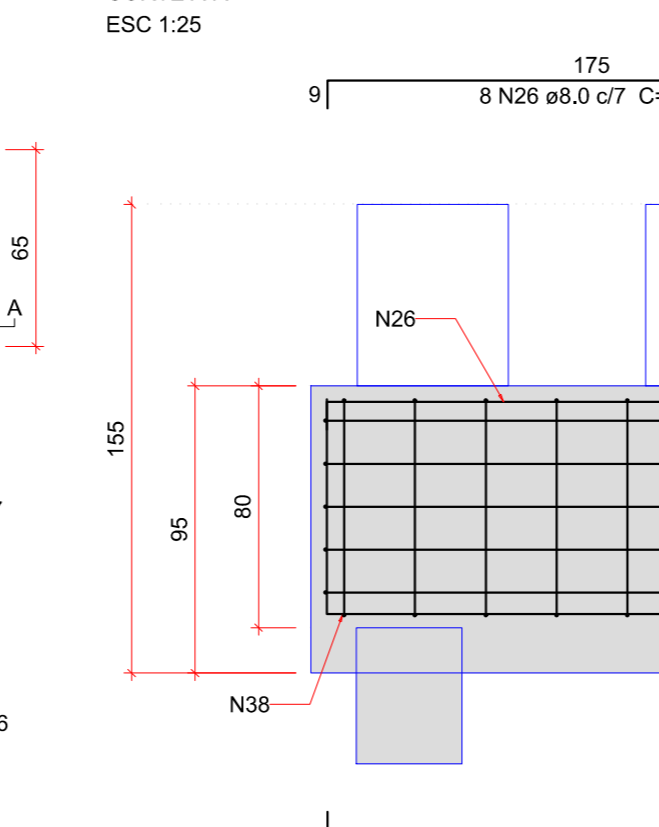


**B58-59 (existente, romper e refazer bloco)**

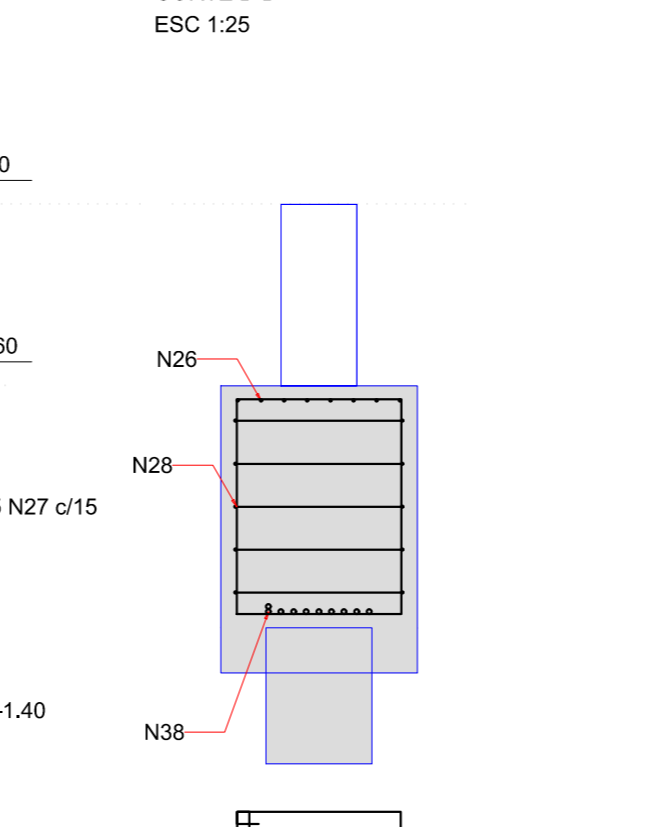
2xC35  
PLANTA  
ESC 1:25



CORTE A-A  
ESC 1:25

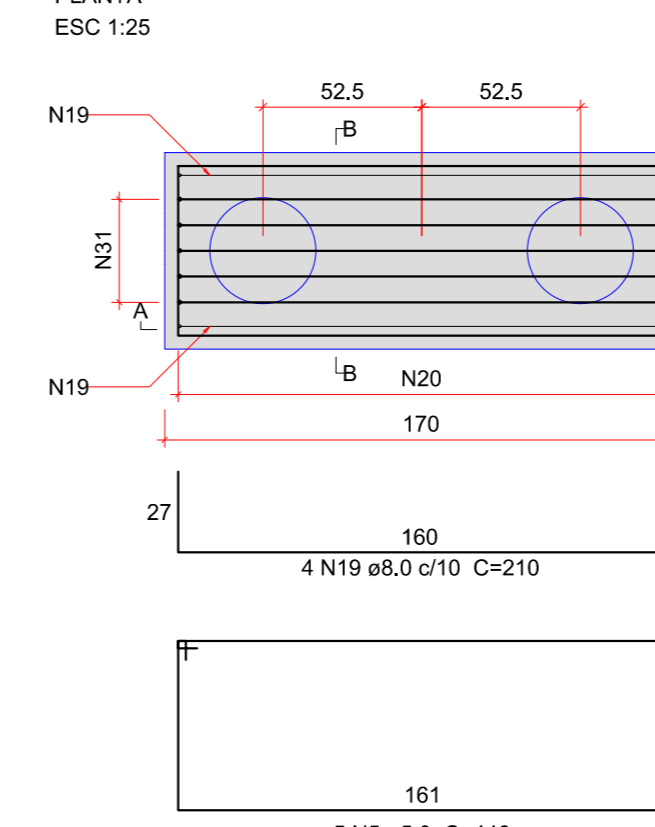


CORTE B-B  
ESC 1:25

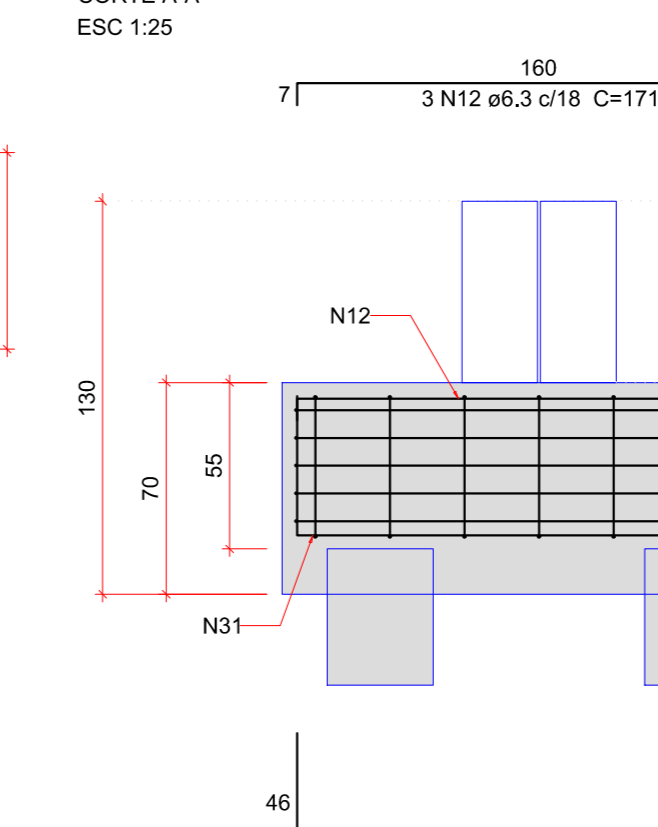


**B64-65 (executar)**

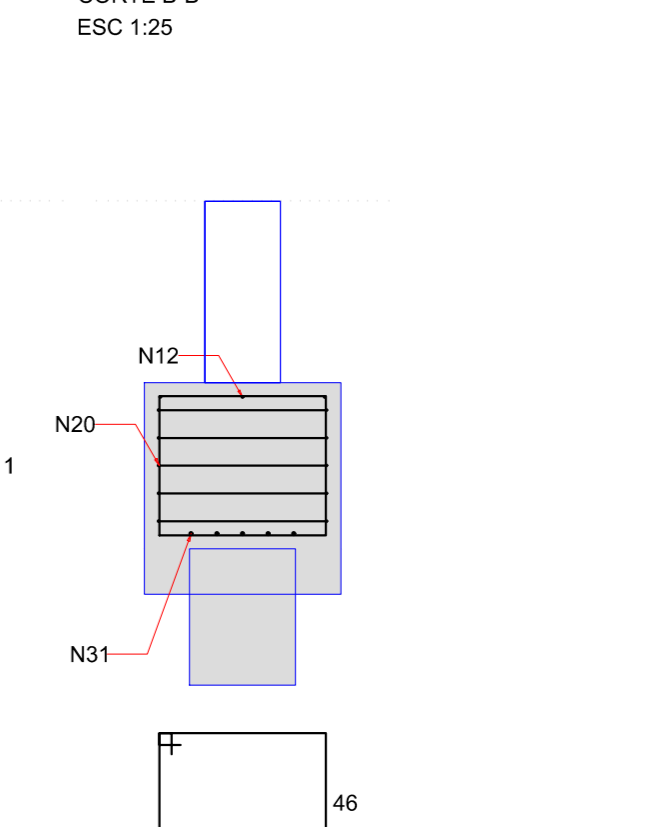
2xC35  
PLANTA  
ESC 1:25



CORTE A-A  
ESC 1:25

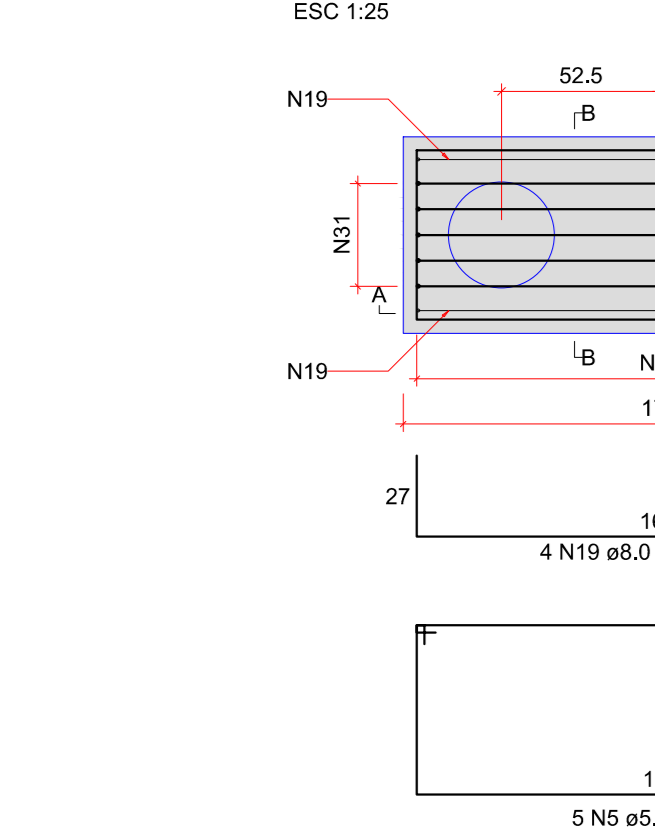


CORTE B-B  
ESC 1:25

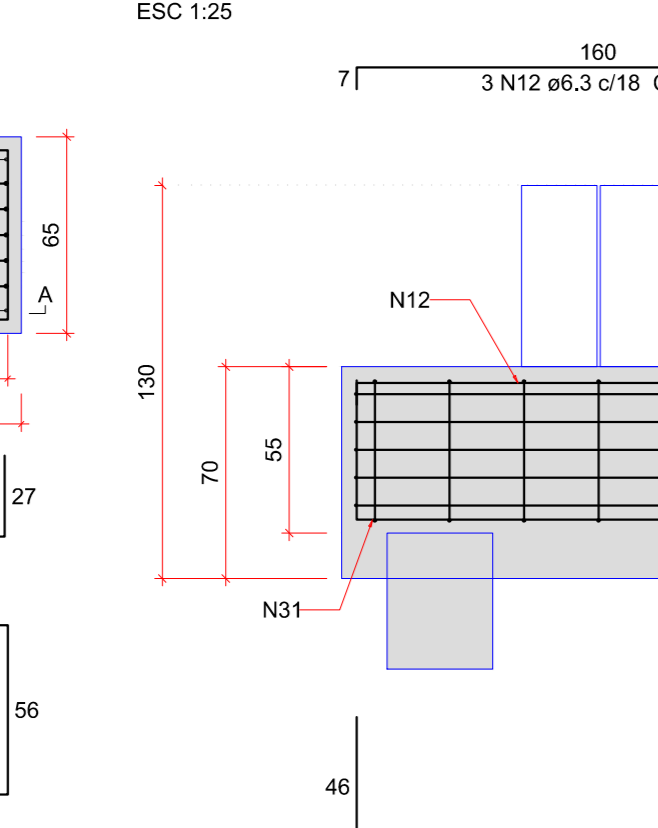


**B79-80 (executar)**

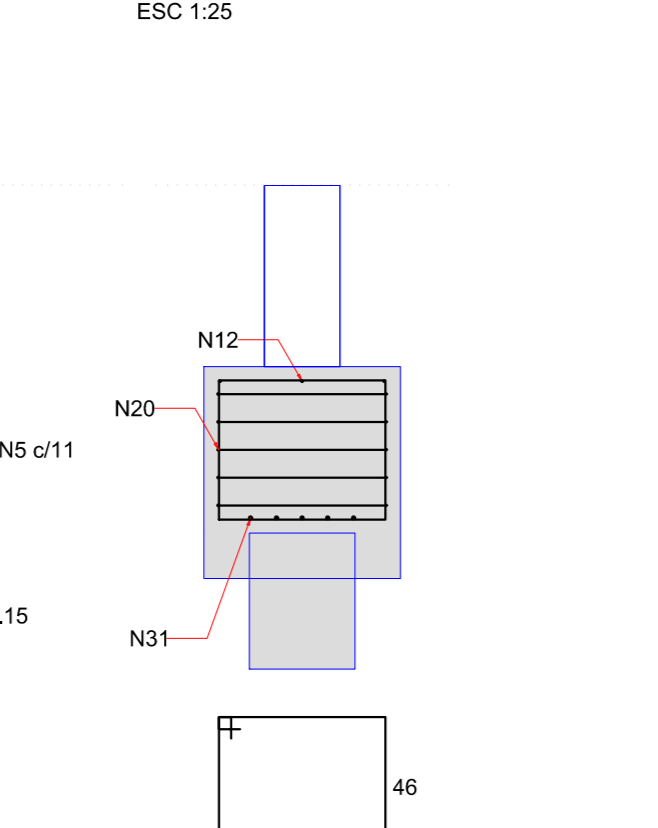
2xC35  
PLANTA  
ESC 1:25



CORTE A-A  
ESC 1:25

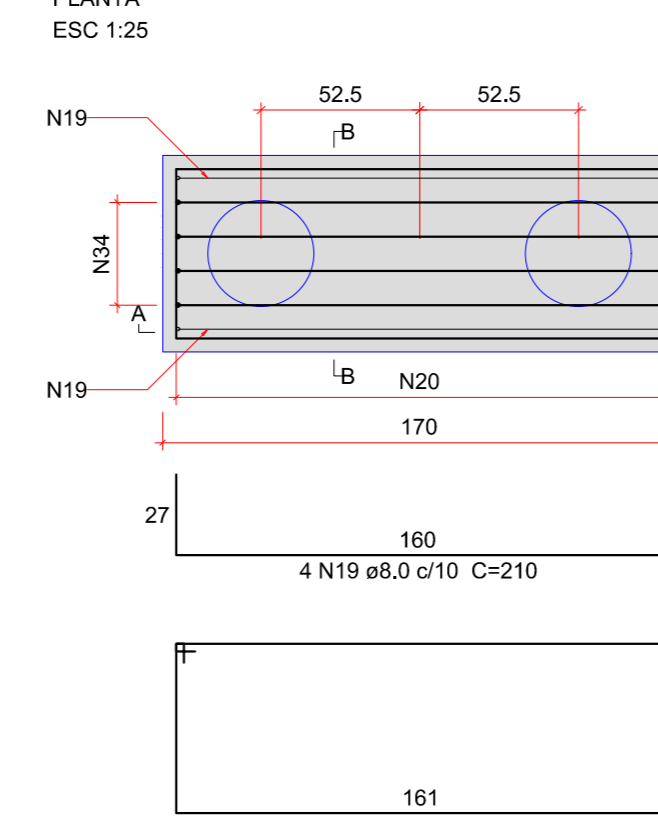


CORTE B-B  
ESC 1:25

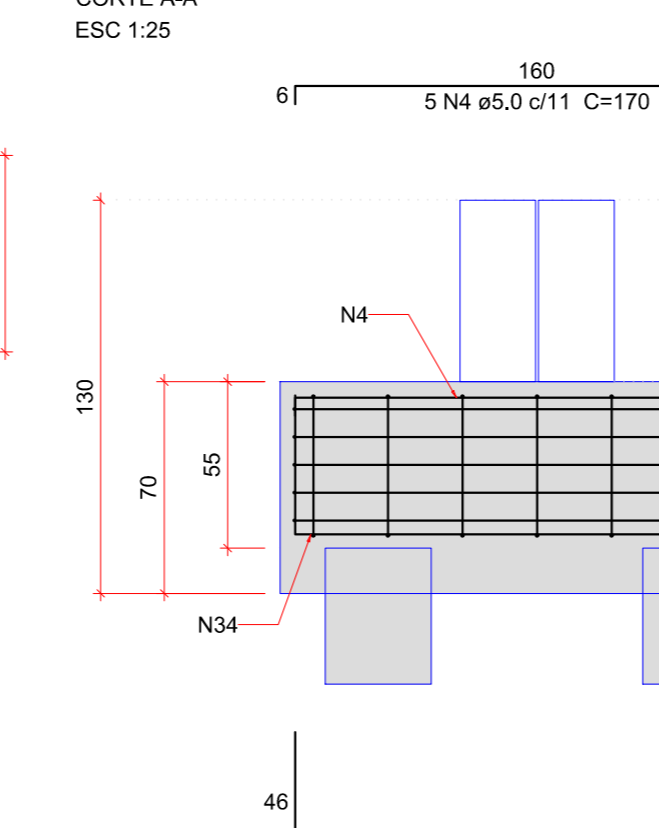


**B95-96 (executar)**

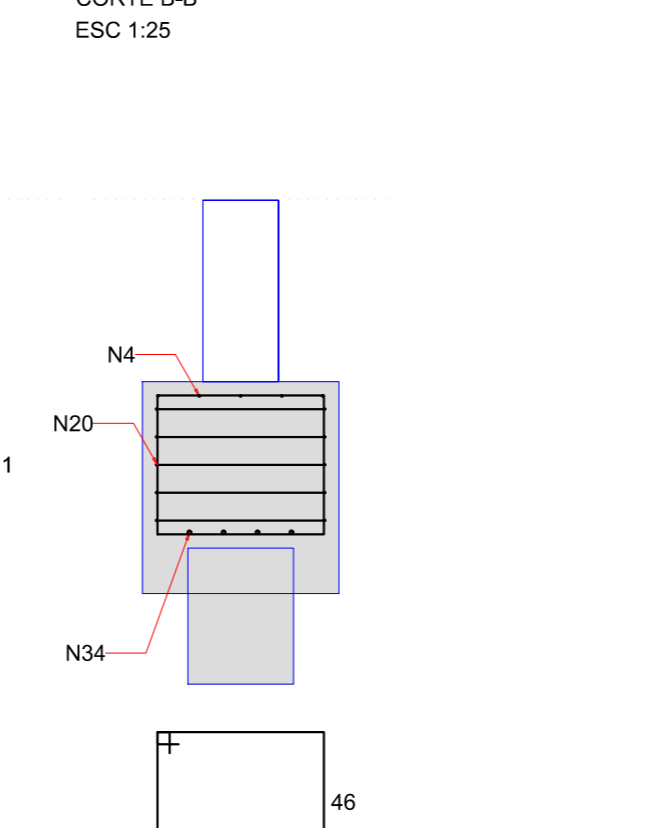
2xC35  
PLANTA  
ESC 1:25



CORTE A-A  
ESC 1:25

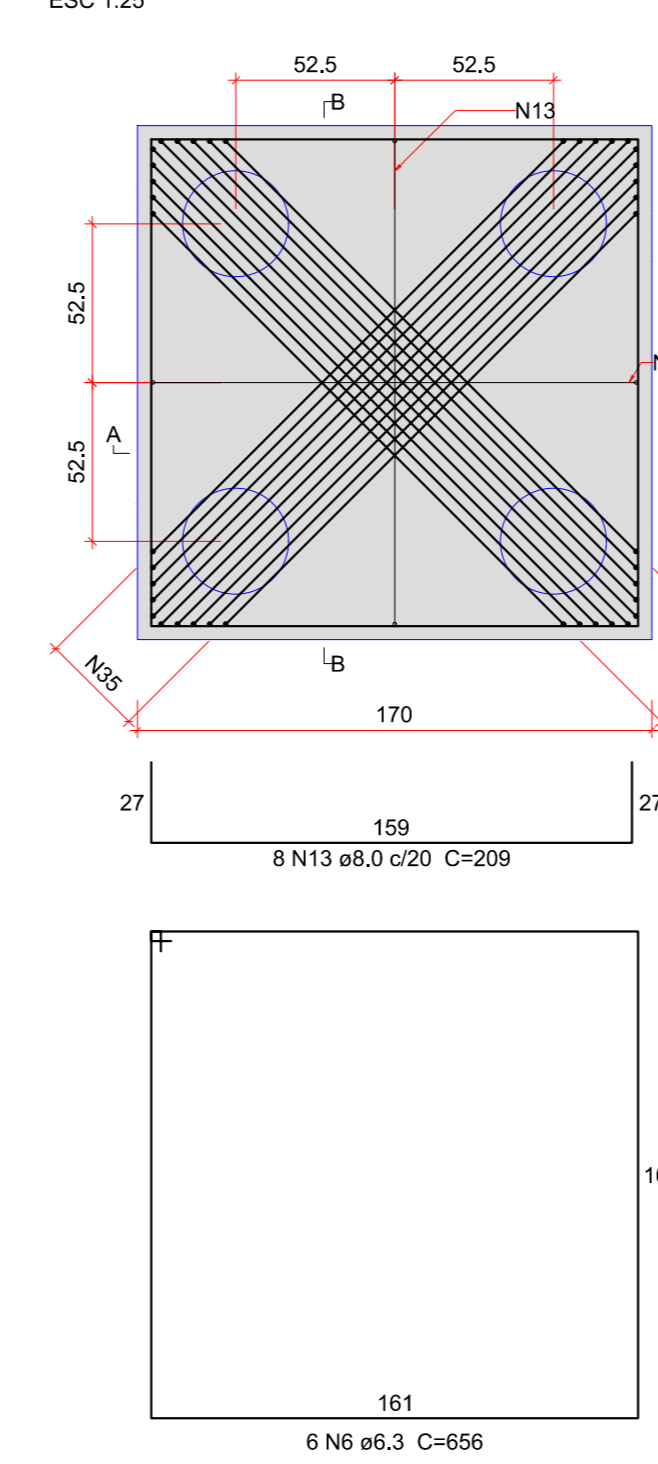


CORTE B-B  
ESC 1:25

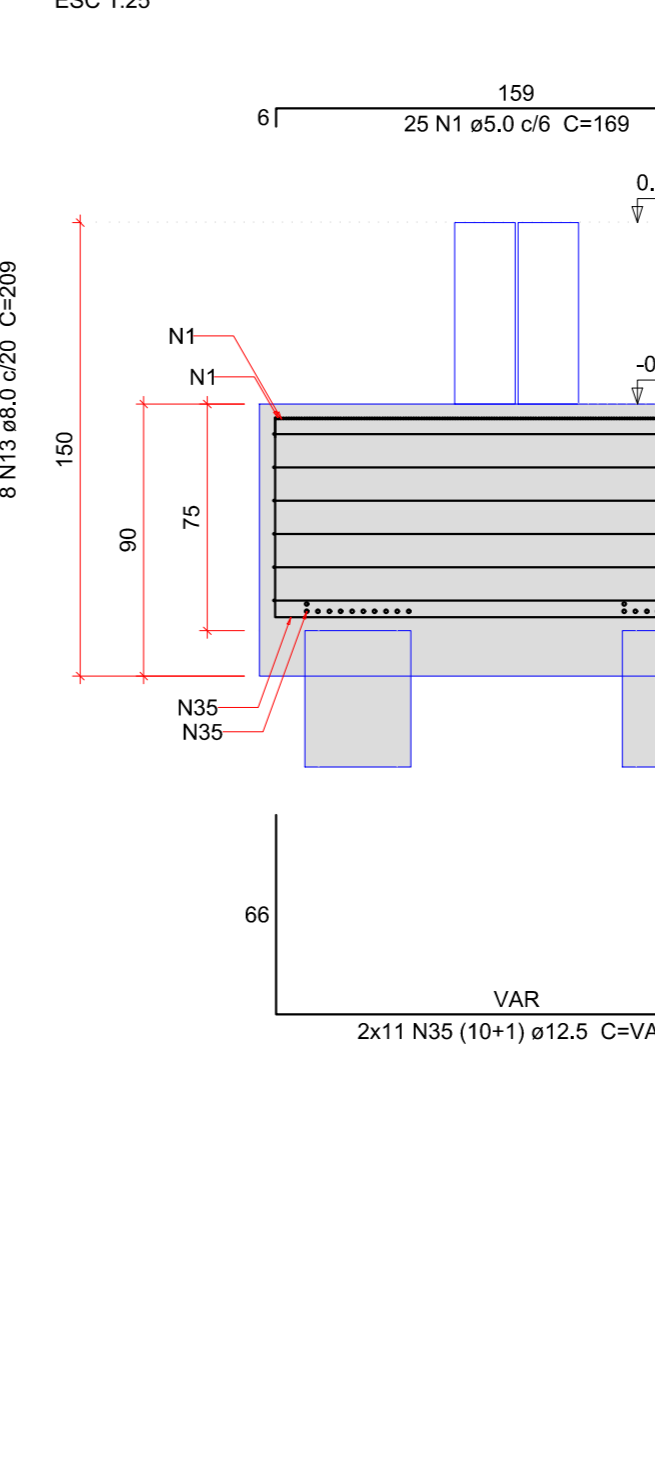


**B120-121 (existente, romper e refazer bloco)**

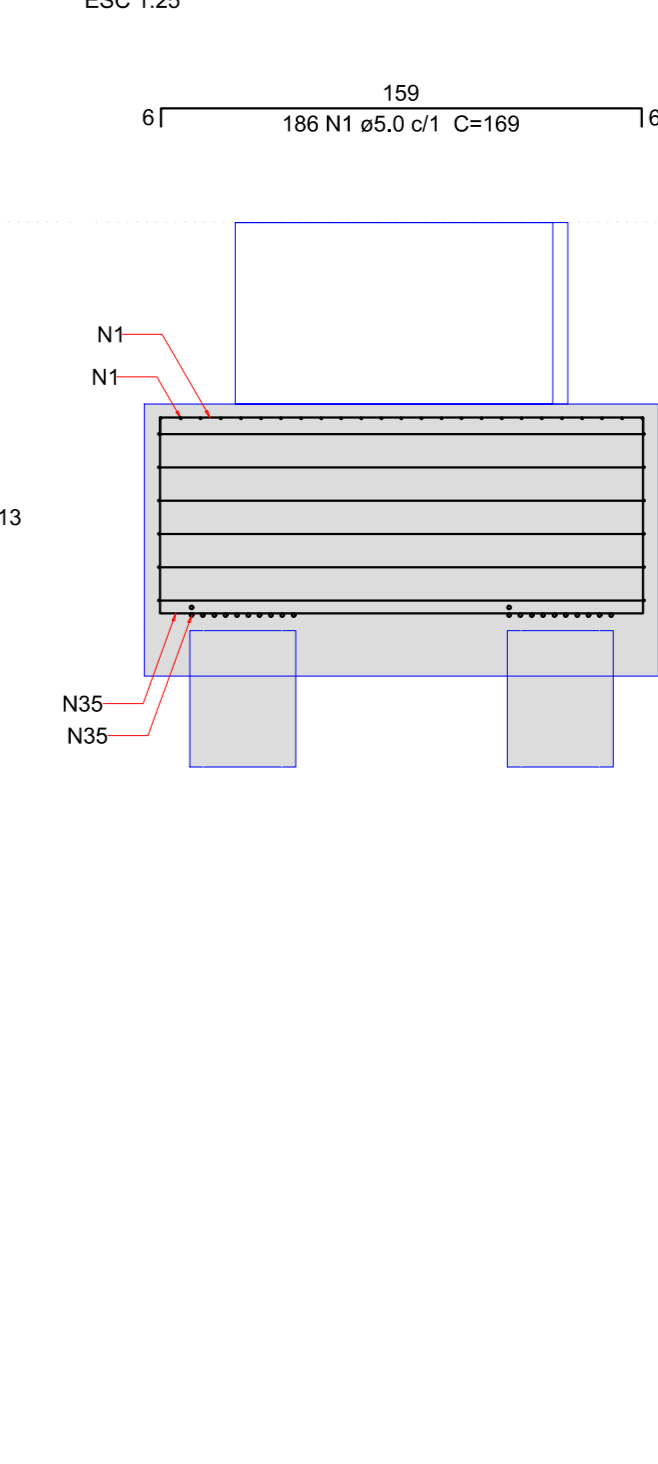
4xC35  
PLANTA  
ESC 1:25



CORTE A-A  
ESC 1:25



CORTE B-B  
ESC 1:25



Nº	Comentário	Data	Autor
0	Emissão inicial		
1	Especificação de blocos existentes a ser executar	18/03/2021	André M. Canan
2	Mudança no status dos Blocos 38-39 e 99	21/09/2021	André M. Canan

**ALGETEC ENGENHARIA E CONSTRUÇÃO**  
 Rua João Pessoa, 850 - sl B - Santa Terezinha  
 Pato Branco/PR  
 46. 99102 2782  
 www.algetec.eng.br

Resp. Técnico	Eng. Civil Daniel Parisianello, CREA: 072040/D Eng. Civil Andre Mateus Canan, CREA: 193875/D Eng. Civil Lorane C. Parisianello, CREA: 172355/D	Projeto	Município de Pato Branco - PR
Exec.	Rua Jacireis	Data	12/07/2021
Obra	Teatro Municipal Naura Rigon	Finalidade	Indicada
Referência	Pavimento: Térreo Blocos 3		