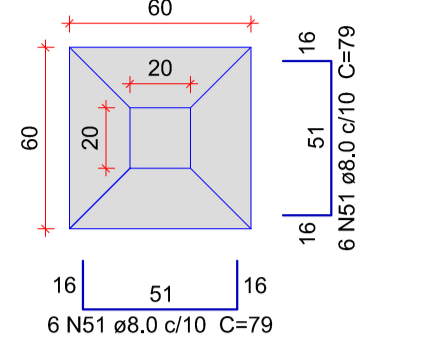
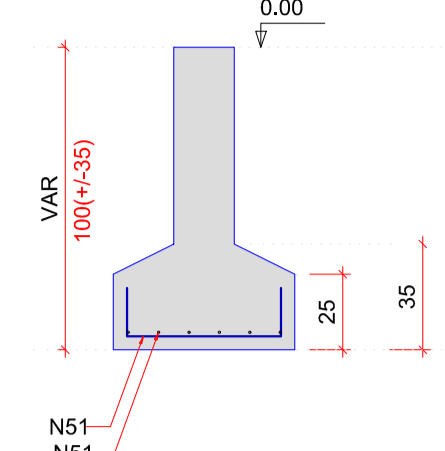


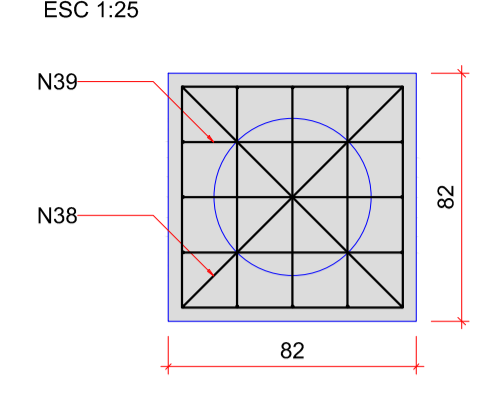
S113, S115 (executar)
1xC35
PLANTA
ESC 1:25



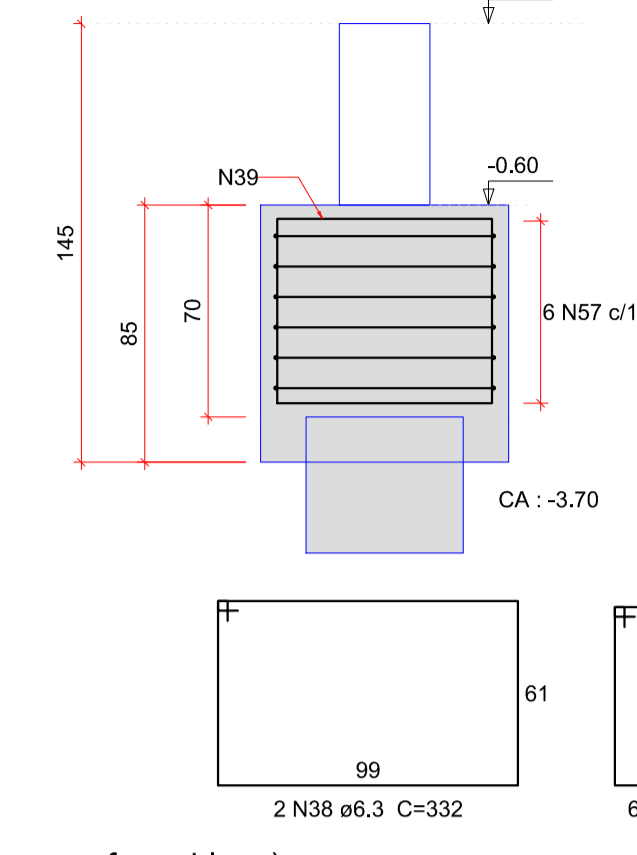
CORTE
ESC 1:25



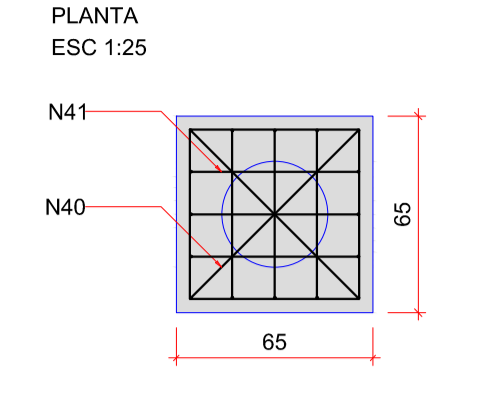
B1 (executado, manter e chumbar esperas especificadas)
1xC52
PLANTA
ESC 1:25



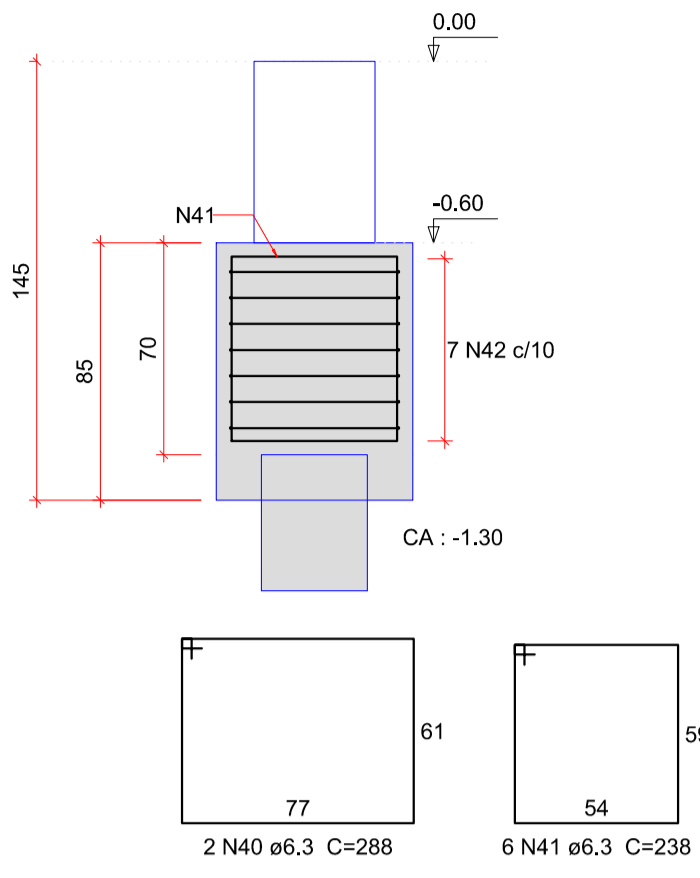
CORTE
ESC 1:25



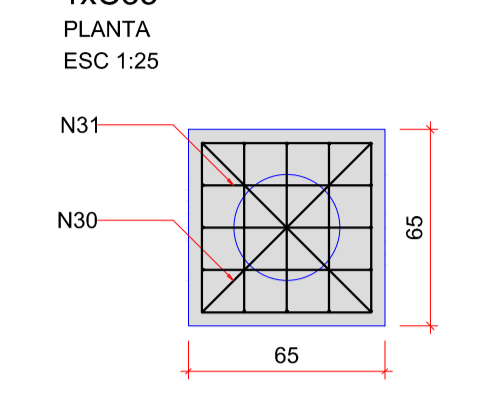
B2 (Executar)
B35, B60 (Existentes, manter e chumbar esperas especificadas)
1xC35
PLANTA
ESC 1:25



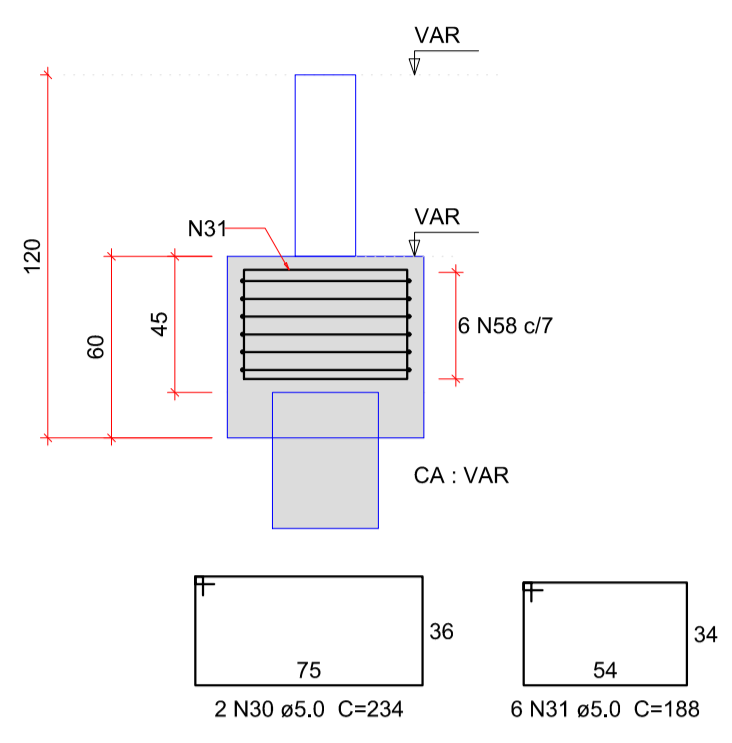
CORTE
ESC 1:25



B3, B29, B36, B55, B57, B63, B77, B78, B89, B94 (executar)
B14, B17, B20, B22, B23, B24, B27, B28, B32, B34, B43, B46, B48, B49, B50, B51, B52, B54, B62, B66, B68, B69, B70, B71, B72, B76, B81, B83, B84, B85, B86, B87, B88, B90, B93, B97, B102, B104, B105, B106, B118 (existentes, manter e chumbar esperas especificadas)
1xC35
PLANTA
ESC 1:25



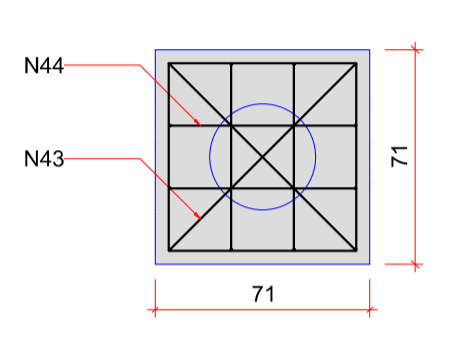
CORTE
ESC 1:25



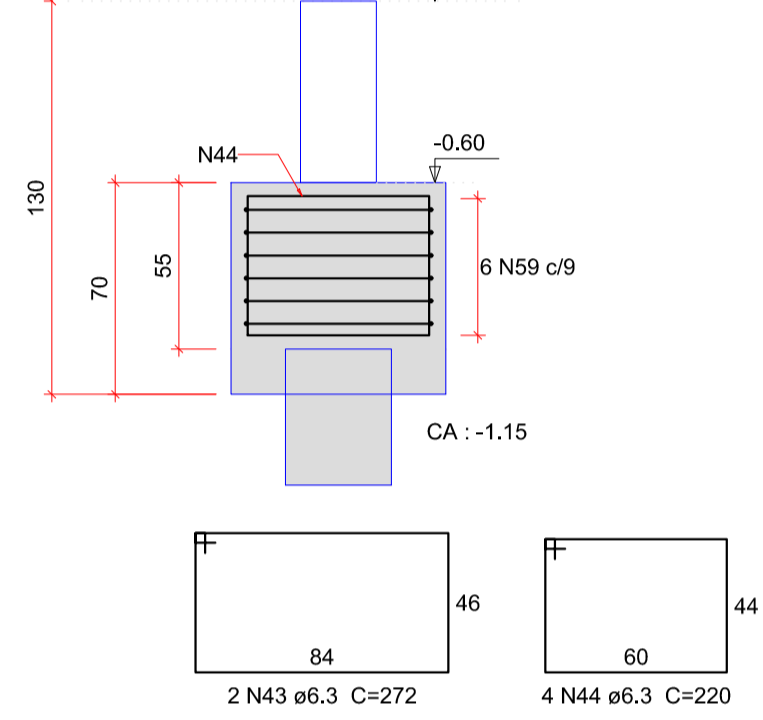
Relação do aço

ACO	N	DIAM (mm)	QUANT	C.UNIT (cm)	C.TOTAL (cm)
CA60	30	5,0	20	234	4680
	31	5,0	60	188	11280
	32	5,0	7	720	5040
	33	5,0	2	288	576
	34	5,0	4	242	968
	35	5,0	5	236	1180
	36	5,0	2	350	700
	37	5,0	6	280	1680
CA50	38	6,3	0	332	0
	39	6,3	0	272	0
	40	6,3	2	268	536
	41	6,3	6	238	1428
	42	6,3	7	236	1652
	43	6,3	0	272	0
	44	6,3	0	220	0
	45	6,3	5	292	1460
	46	6,3	10	254	2540
	47	6,3	20	208	4160
	48	6,3	0	220	0
	49	6,3	6	656	3936
	50	6,3	7	340	2380
	51	8,0	24	79	1896
	52	8,0	4	331	1324
	53	8,0	12	336	4032
	54	8,0	4	314	1256
	55	8,0	6	278	1668
	56	8,0	12	272	3264
	57	10,0	0	305	0
	58	10,0	85	237	20145
	59	10,0	0	261	0
	60	12,5	6	457	2742
	61	12,5	0	276	0
	62	16,0	7	409	2863

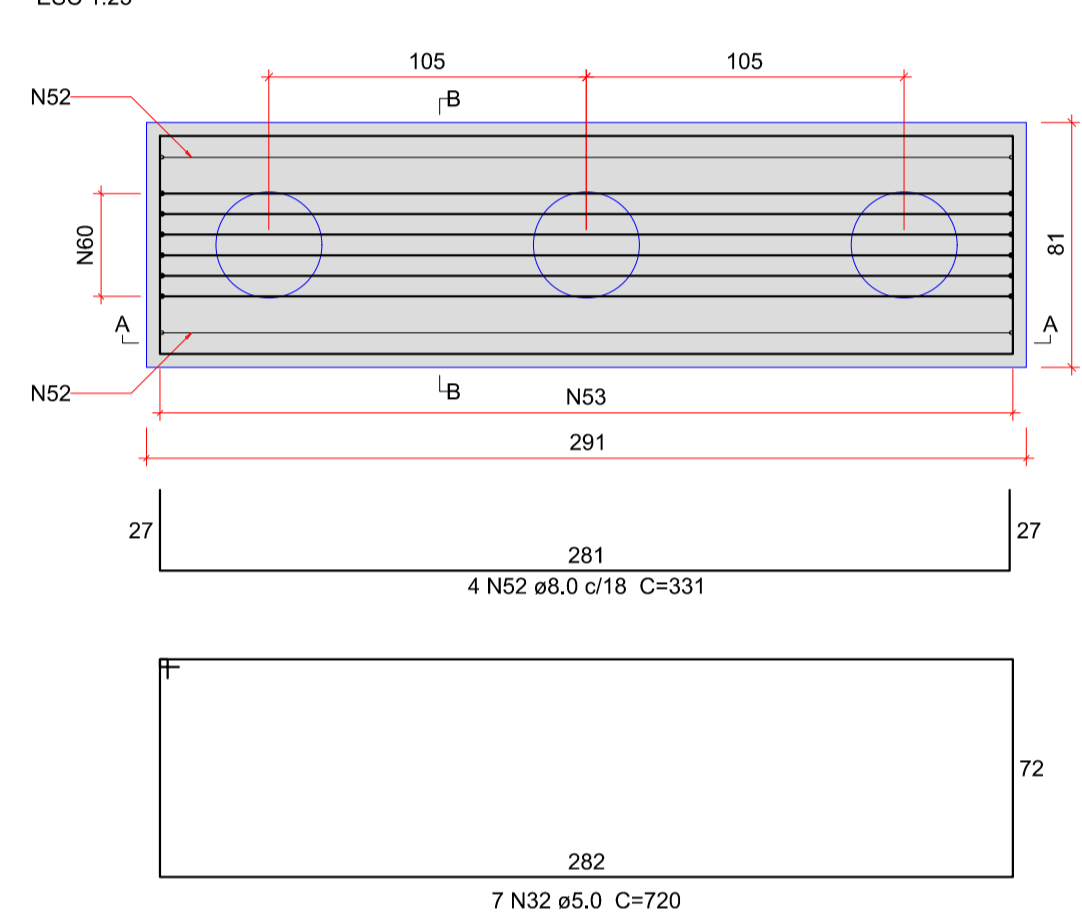
B4, B12, B116 (existente, manter e chumbar esperas especificadas)
1xC35
PLANTA
ESC 1:25



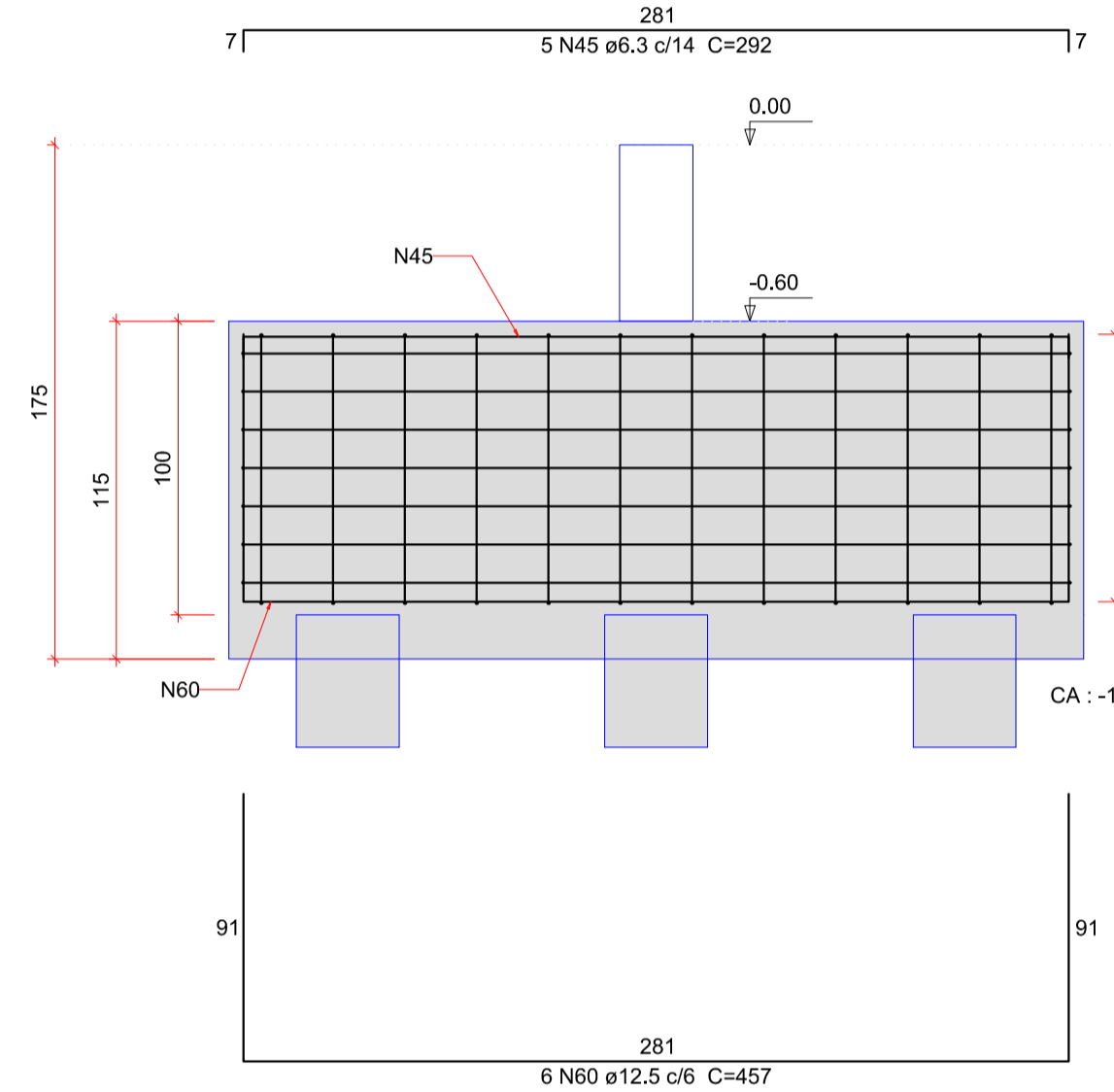
CORTE
ESC 1:25



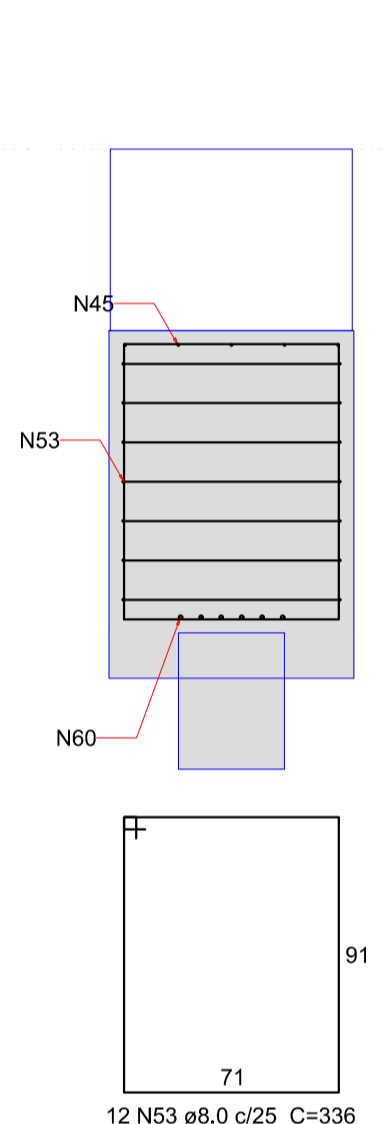
B5 (existente, romper e refazer bloco)
3xC35
PLANTA
ESC 1:25



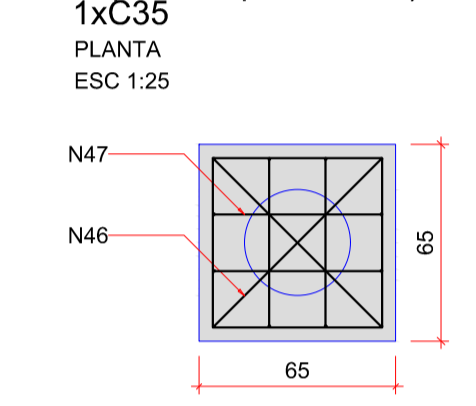
CORTE A-A
ESC 1:25



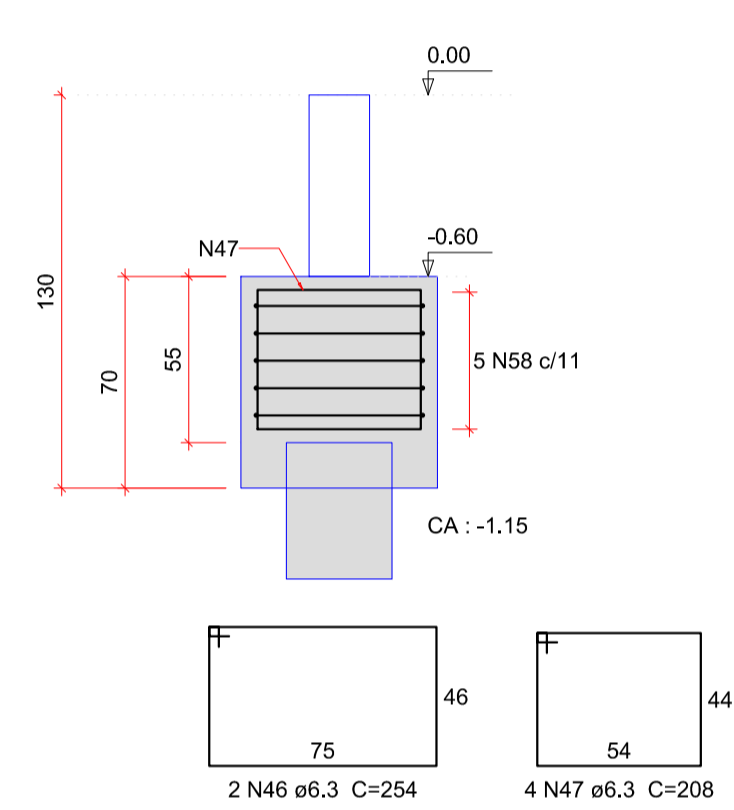
CORTE B-B
ESC 1:25



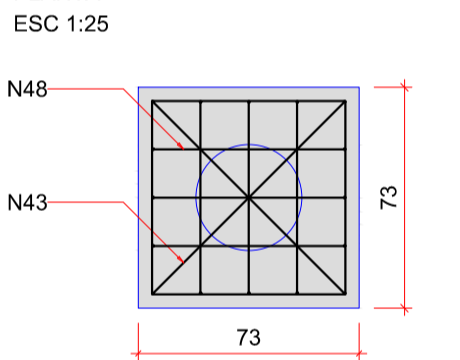
B6, B18, B41, B109, B123 (executar)
B9, B10, B15, B19, B33, B47, B67, B82, B98, B107, B108, B110, B112, B117, B119, B124, B125 (existentes, manter e chumbar esperas especificadas)
1xC35
PLANTA
ESC 1:25



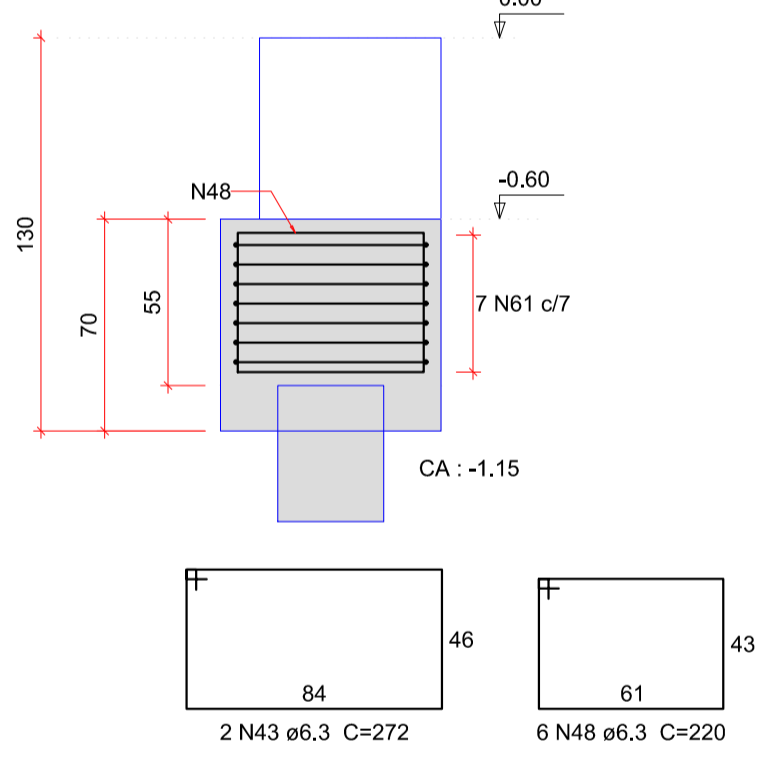
CORTE
ESC 1:25



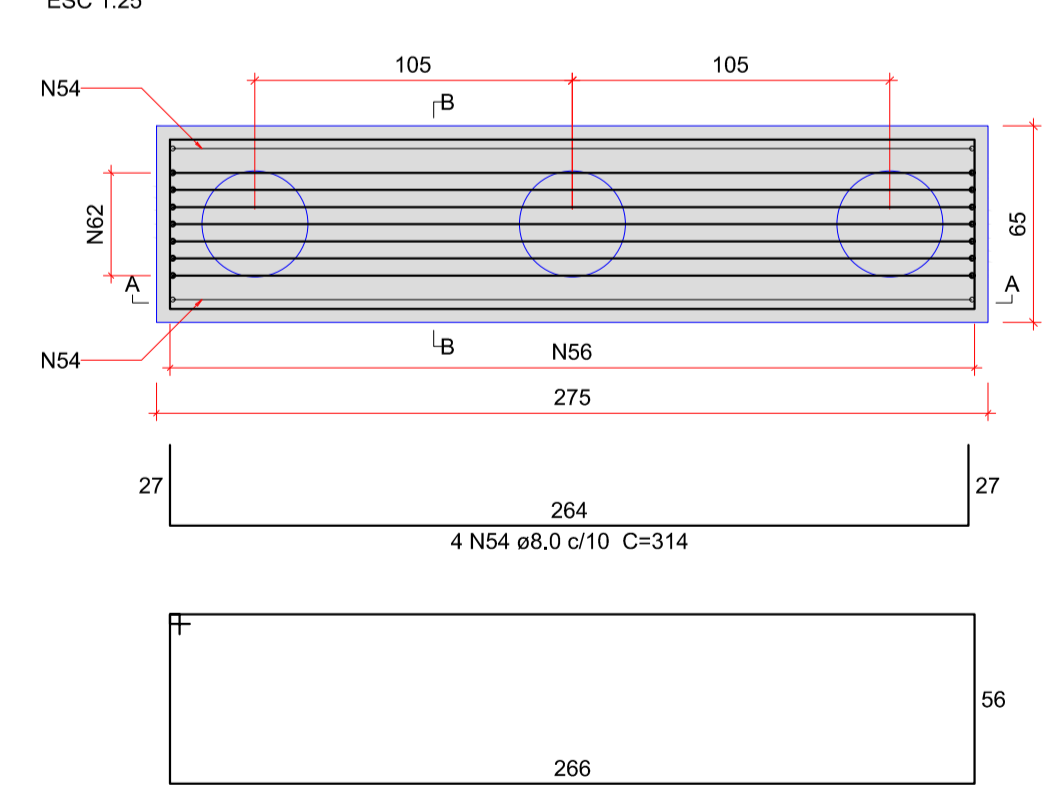
B11, B13, B126, B128 (existentes, manter e chumbar esperas especificadas)
1xC35
PLANTA
ESC 1:25



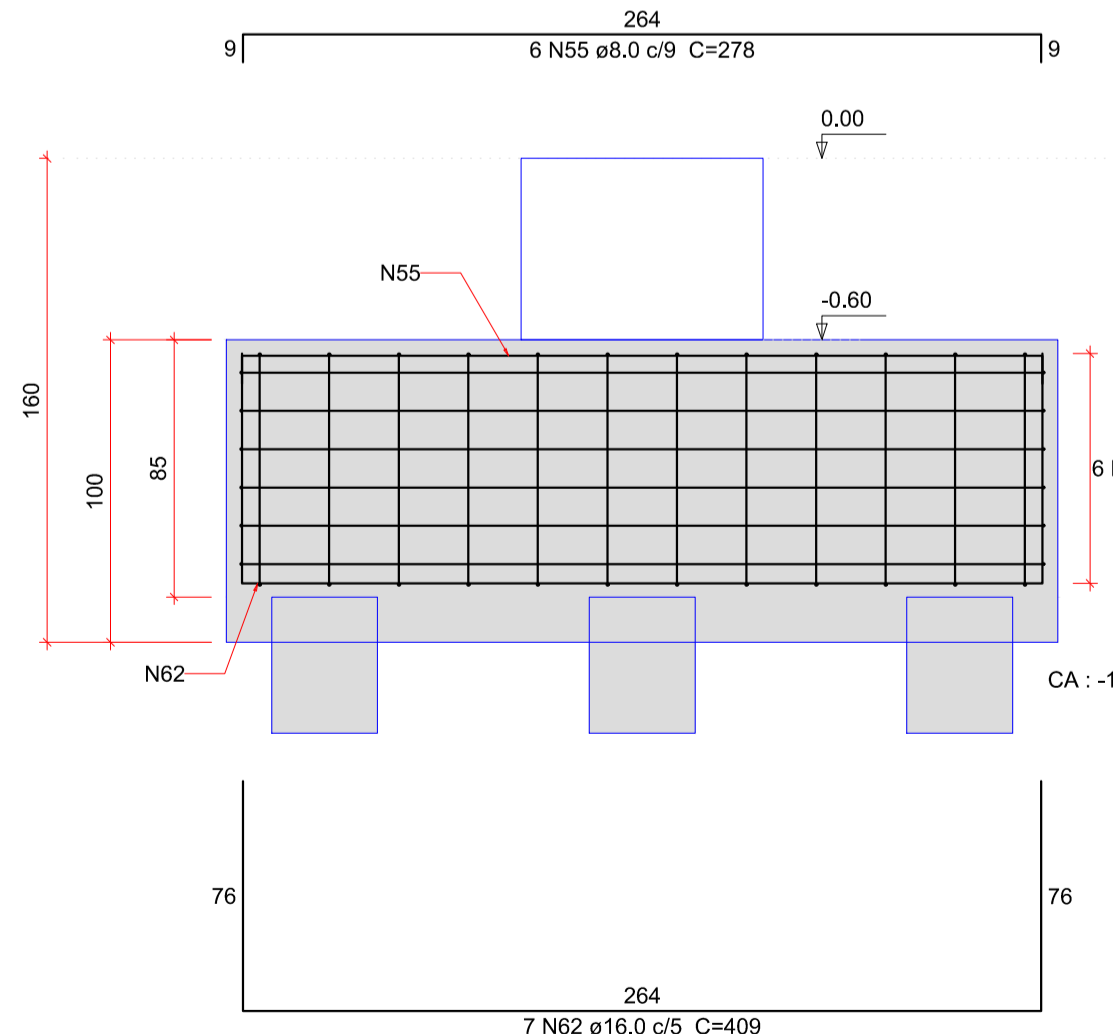
CORTE
ESC 1:25



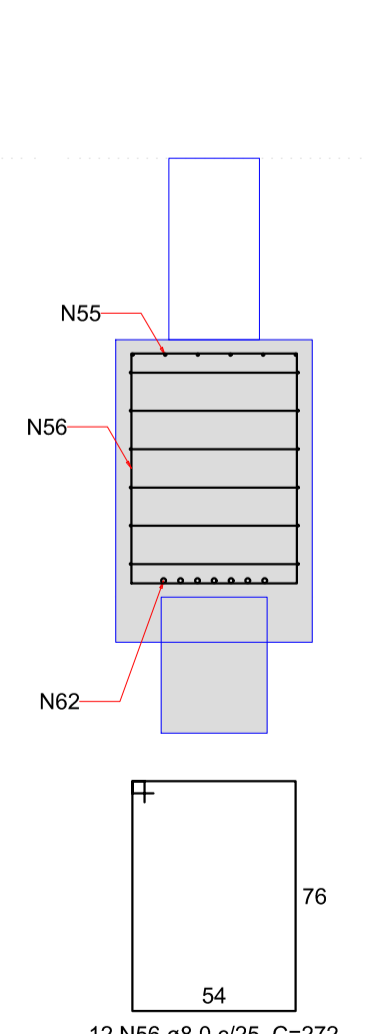
B21 (existente, romper e refazer bloco)
3xC35
PLANTA
ESC 1:25



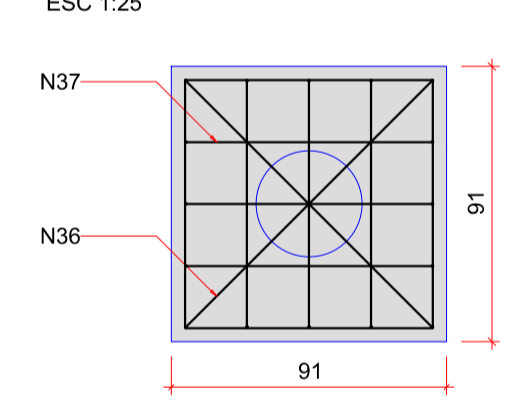
CORTE A-A
ESC 1:25



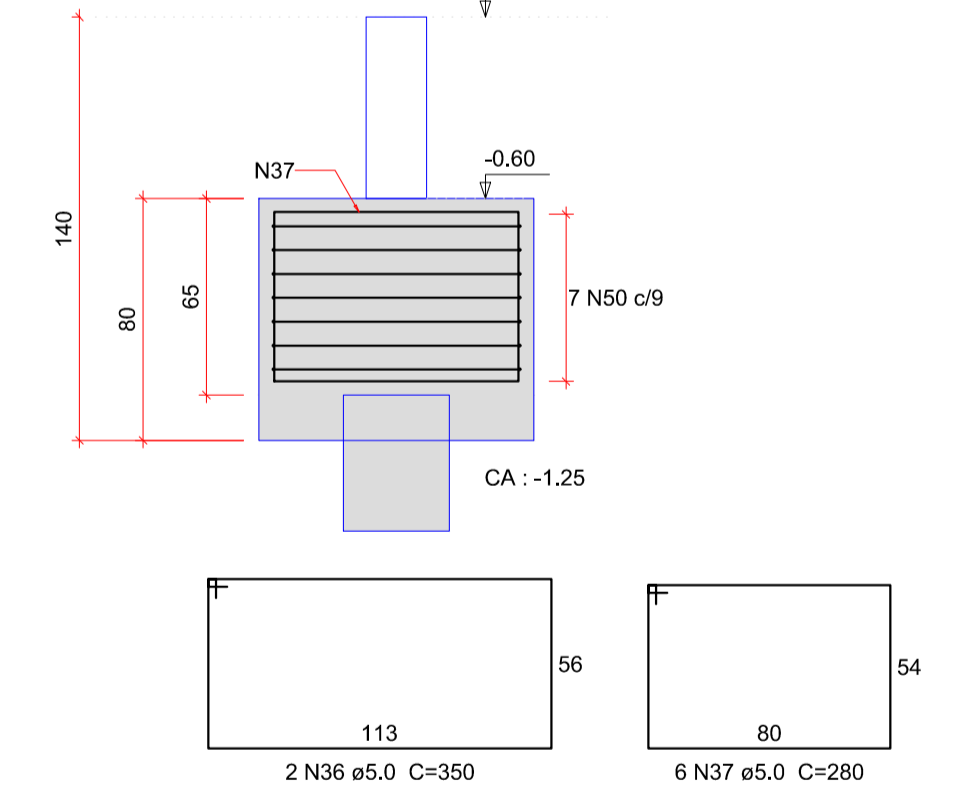
CORTE B-B
ESC 1:25



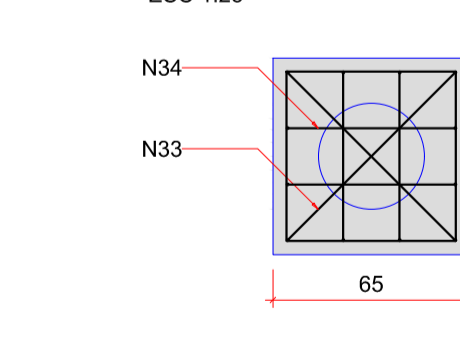
B37 (existente, romper e refazer bloco)
1xC35
PLANTA
ESC 1:25



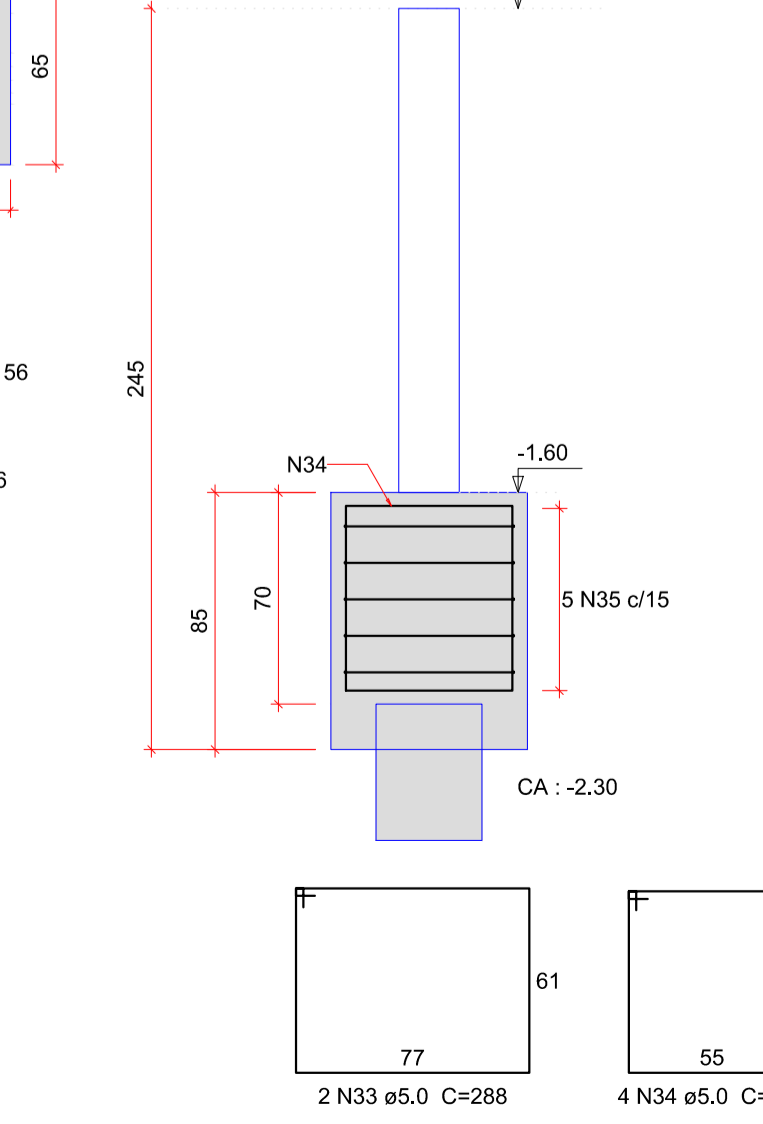
CORTE
ESC 1:25



B25 (executar)
1xC35
PLANTA
ESC 1:25



CORTE
ESC 1:25



Nº	Comentário	Data	Autor
0	Emissão inicial		
1	Especificação de blocos existentes e à executar	19/08/2021	André M. Canan

ALGETEC ENGENHARIA E CONSTRUÇÃO
Rua João Pessoa, 880 - sl B - Santa Terezinha
Pato Branco/PR
46. 99102 2782
www.algetec.eng.br

PROJETO ESTRUTURAL

Resp. Técnico	Eng. Civil Daniel Parcianello, CREA: 072040/D Eng. Civil André Mateus Canan, CREA: 193875/D Eng. Civil Loriane C. Parcianello, CREA: 172355/D	Proprietário	Município de Pato Branco - PR
Enr.	Rua Jacireiá Pato Branco/PR	Data	12/07/2021
Obra	Teatro Municipal Naura Rigon	Escala	Indicada
Referência	Pavimento: Térreo Blocos 1 e Sapatas		