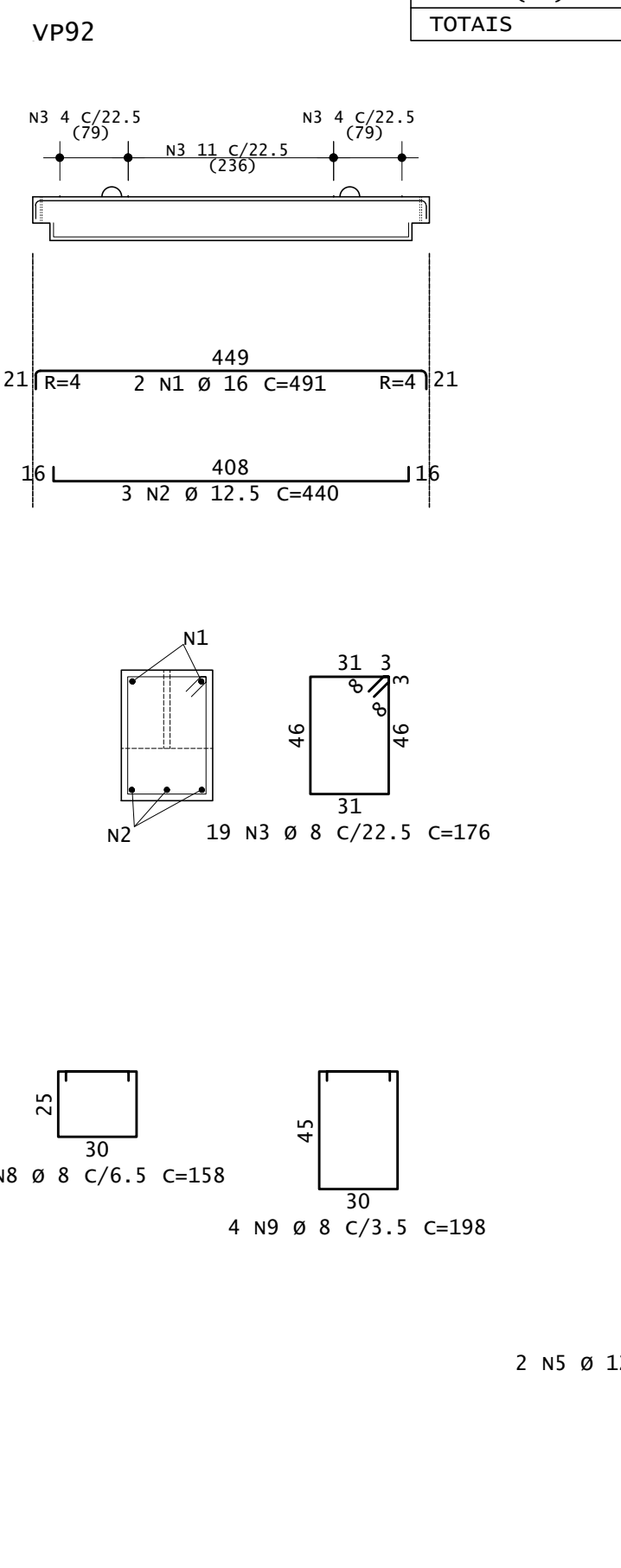
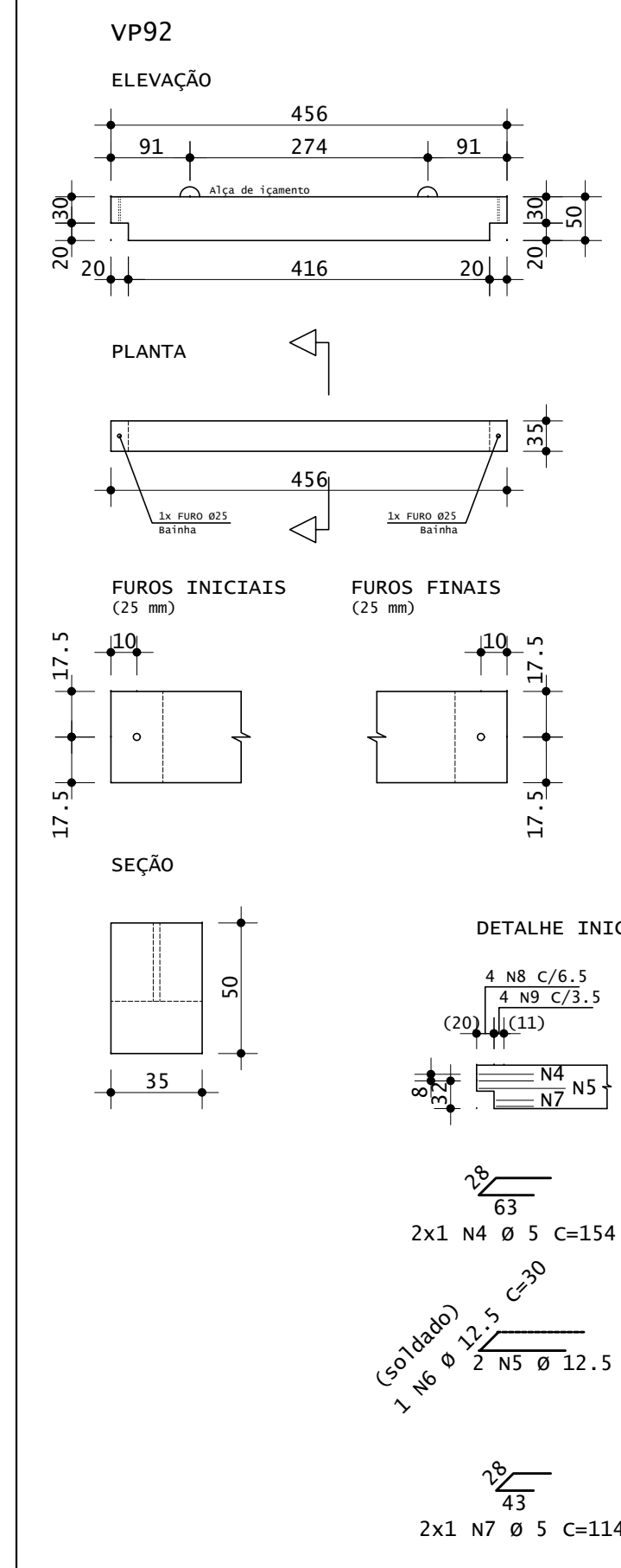
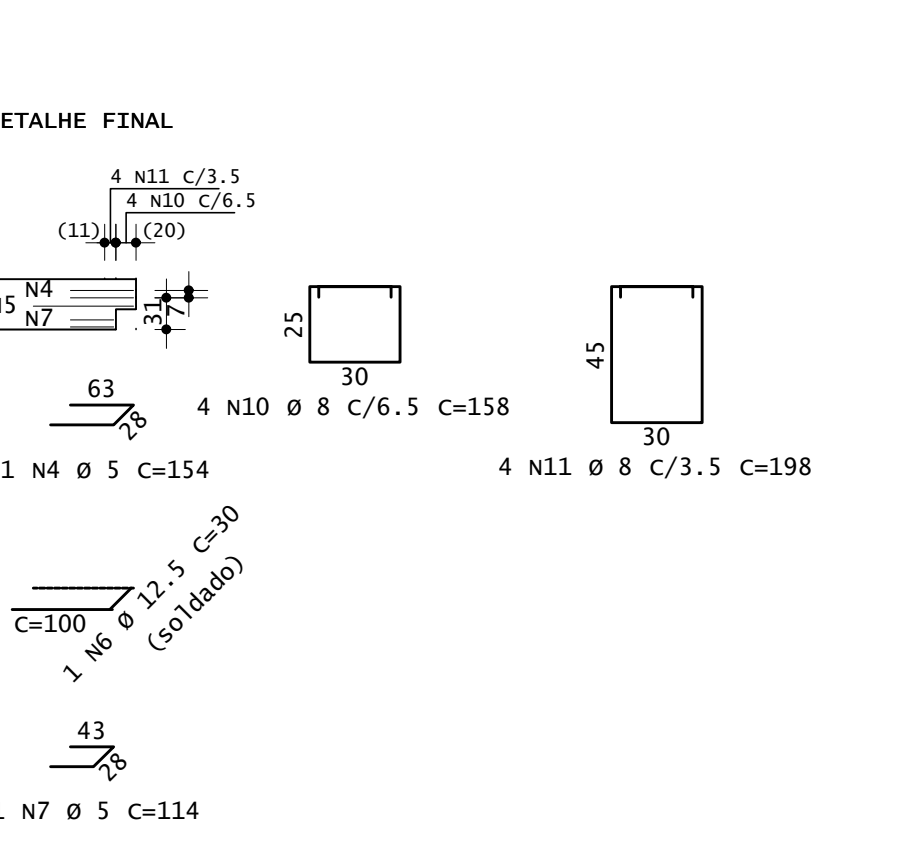


Pavimento	Quant	Volume unit m3	Volume total m3	Peso unit tf	Peso total tf
2º Pav(Lx)	2	0.770	1.540	1.925	3.850
TOTAIS	2		1.540	1.925	3.850

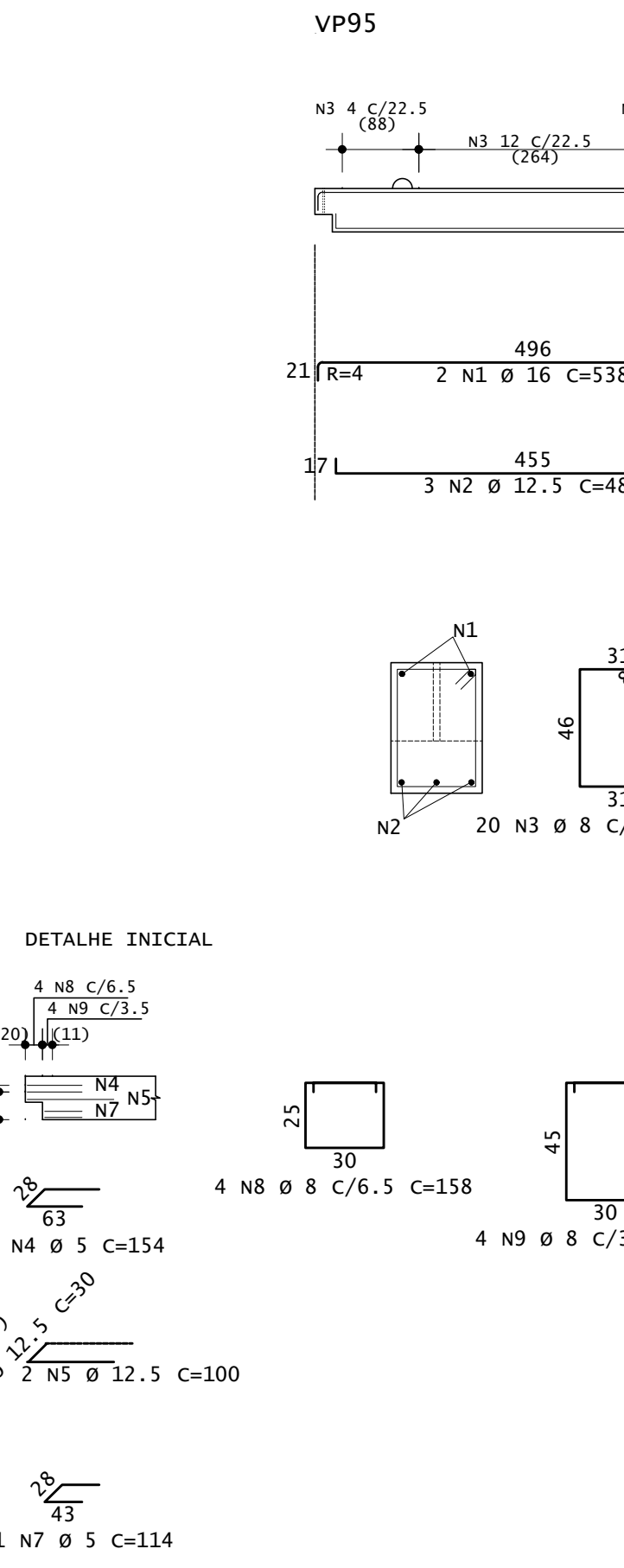
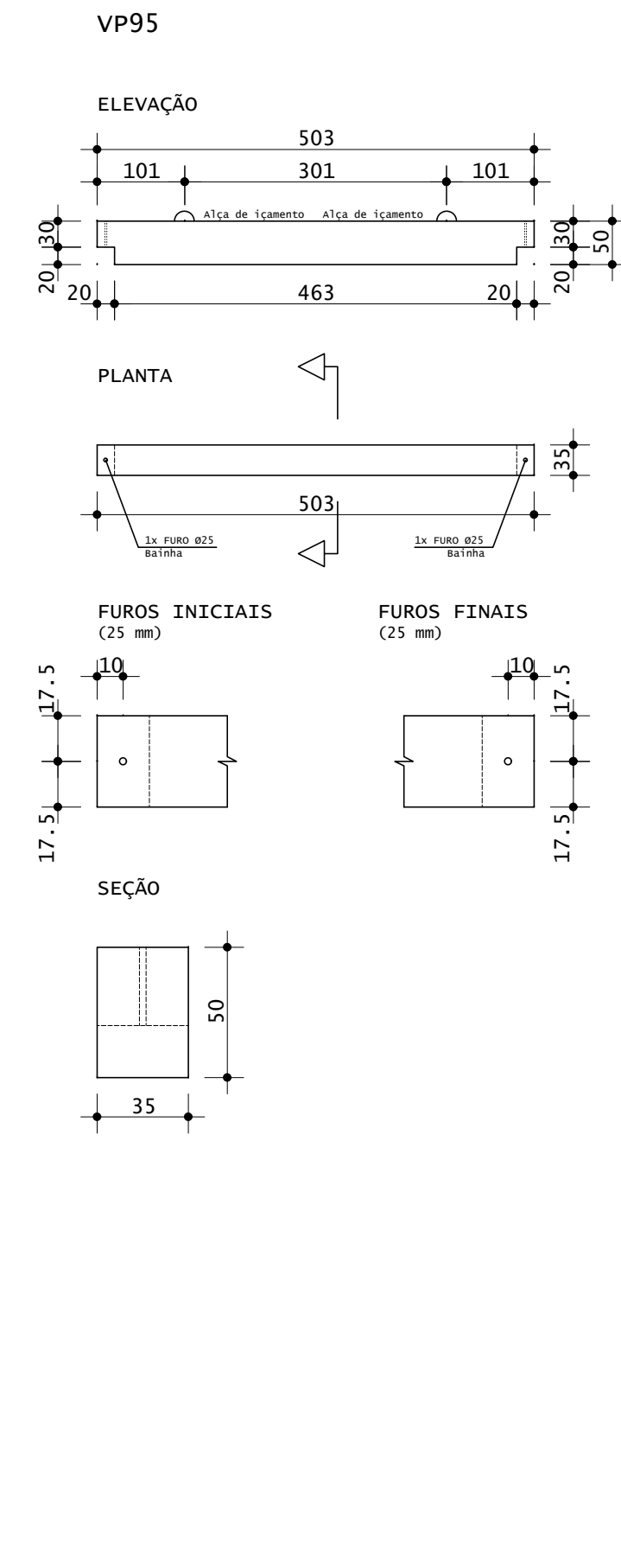


ACO	POS	BIT (mm)	QUANT	COMPRIMENTO (cm)	UNIT	TOTAL (cm)
VP92 (X2)						
S0A	1	16	4	391	1964	
S0A	2	12.5	6	440	2640	
S0A	3	8	38	176	6688	
S0A	4	5	8	154	1232	
S0A	5	12.5	8	100	800	
S0A	6	12.5	8	100	800	
S0A	7	5	8	114	572	
S0A	8	8	8	158	1264	
S0A	9	8	8	158	1264	
S0A	10	8	8	158	1264	
S0A	11	8	8	158	1264	

ACO	BIT	COMPR	PESO
60A	5	21	3
S0A	8	124	49
S0A	16	20	31
Peso Total	60A =	30	3
Peso Total	S0A =	114	114 kg

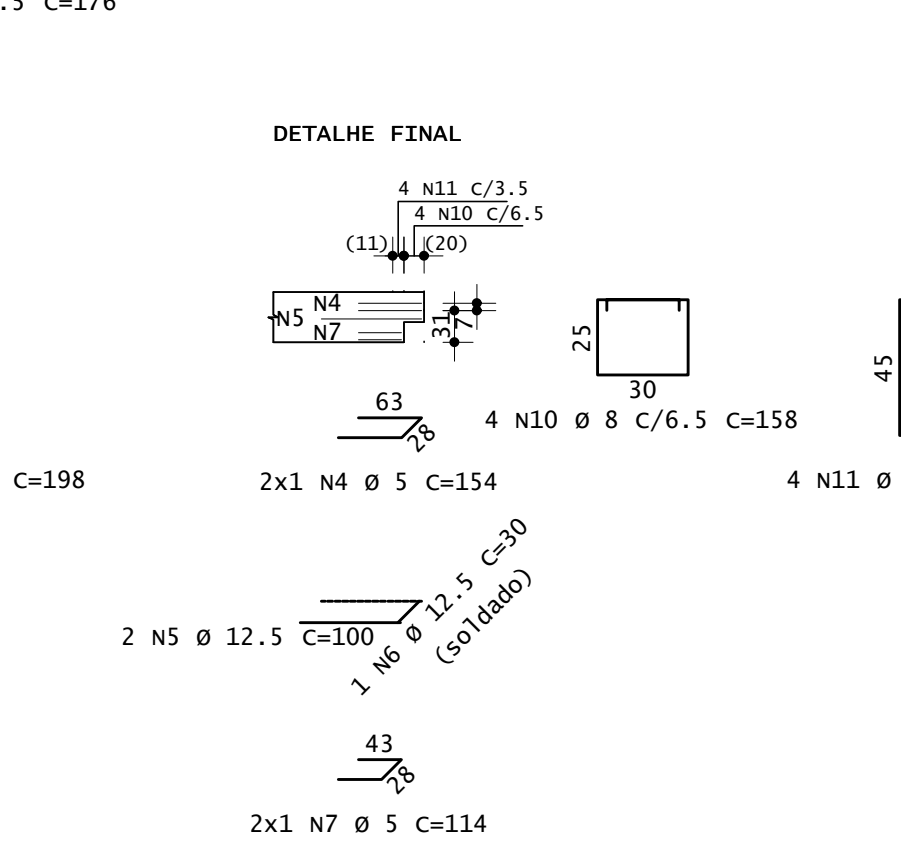


Pavimento	Quant	Volume unit m3	Volume total m3	Peso unit tf	Peso total tf
2º Pav(Lx)	1	0.852	0.852	2.131	2.131
TOTAIS	1		0.852	2.131	2.131

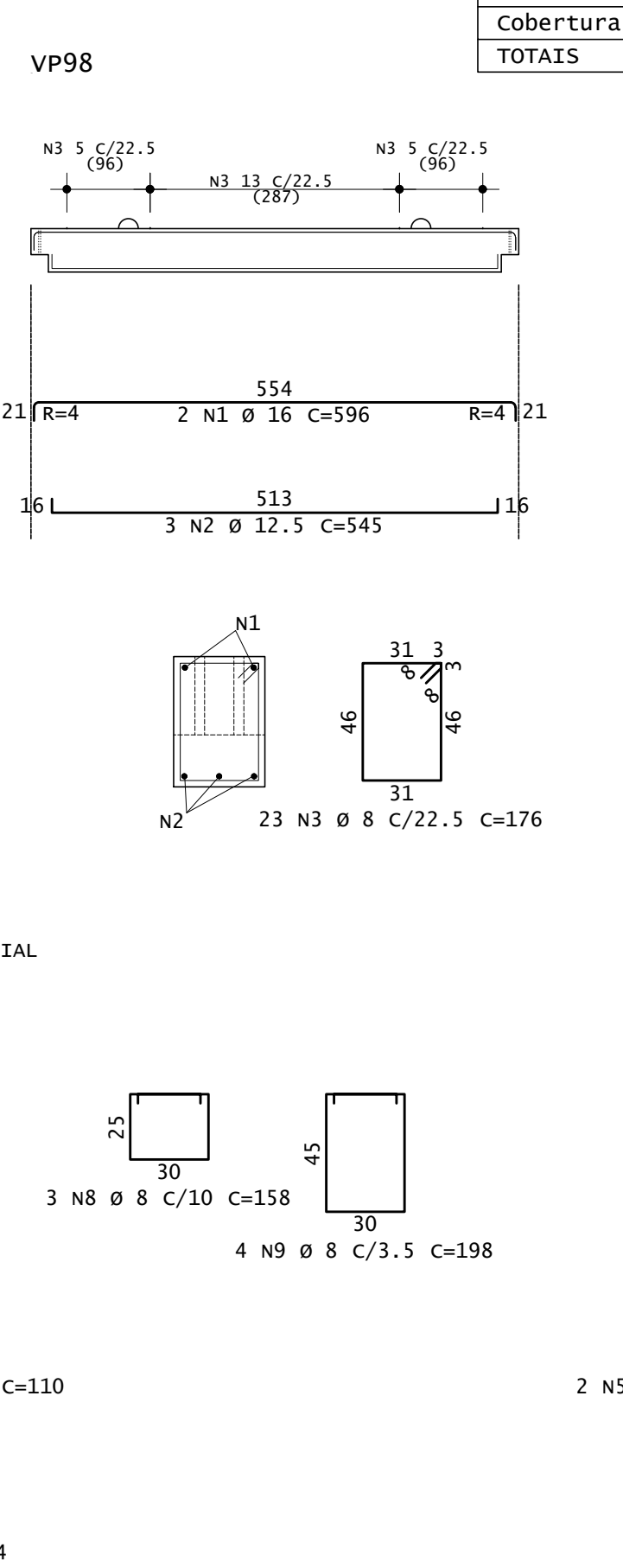
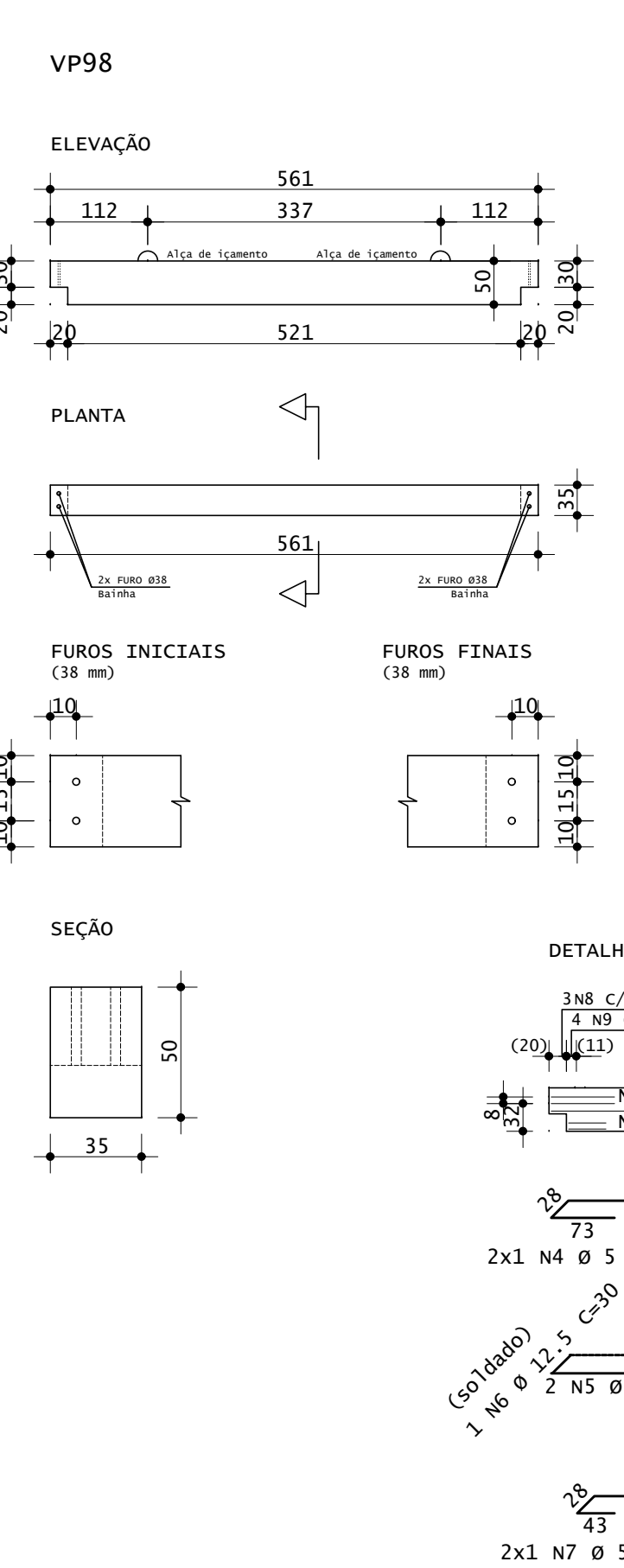


ACO	POS	BIT (mm)	QUANT	COMPRIMENTO (cm)	UNIT	TOTAL (cm)
VP95						
S0A	1	16	2	518	1076	
S0A	2	12.5	3	489	1467	
S0A	3	8	20	176	3520	
S0A	4	5	4	154	616	
S0A	5	12.5	4	100	400	
S0A	6	12.5	2	100	200	
S0A	7	5	4	114	456	
S0A	8	8	4	158	632	
S0A	9	8	4	158	632	
S0A	10	8	4	158	632	
S0A	11	8	4	158	632	

ACO	BIT	COMPR	PESO
60A	5	11	75
S0A	8	64	34
S0A	12.5	19	19
S0A	16	11	17
Peso Total	60A =	11	2 kg
Peso Total	S0A =	61	61 kg

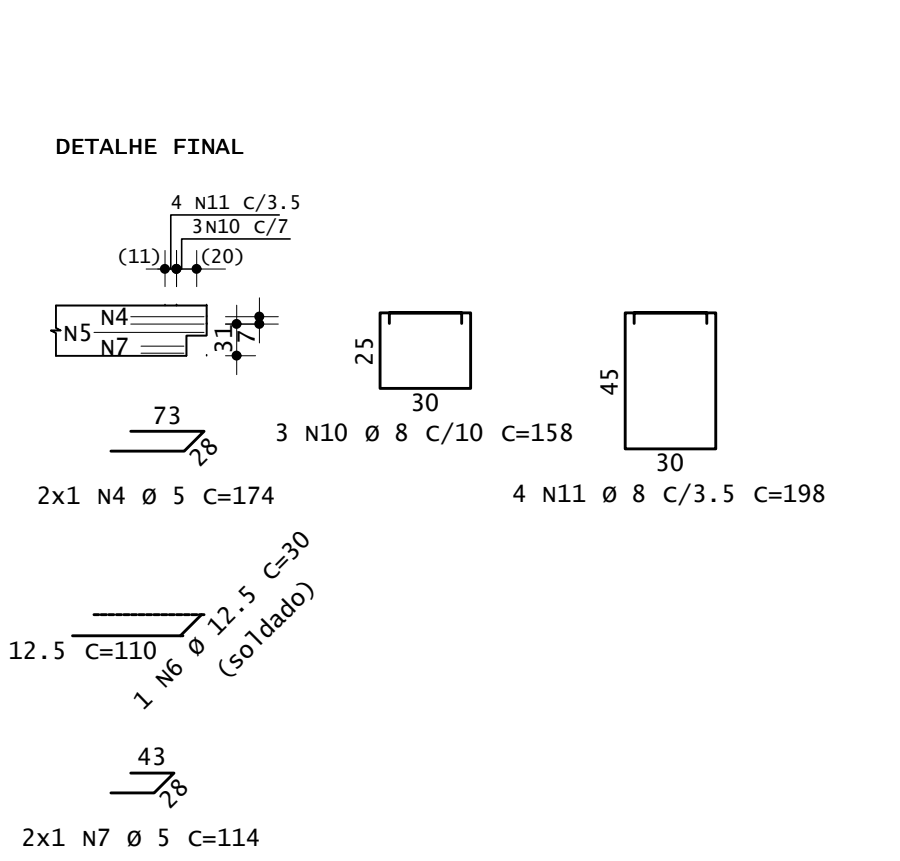


Pavimento	Quant	Volume unit m3	Volume total m3	Peso unit tf	Peso total tf
Cobertura(Lx)	2	0.940	1.879	2.349	4.699
TOTAIS	2		1.879	2.349	4.699

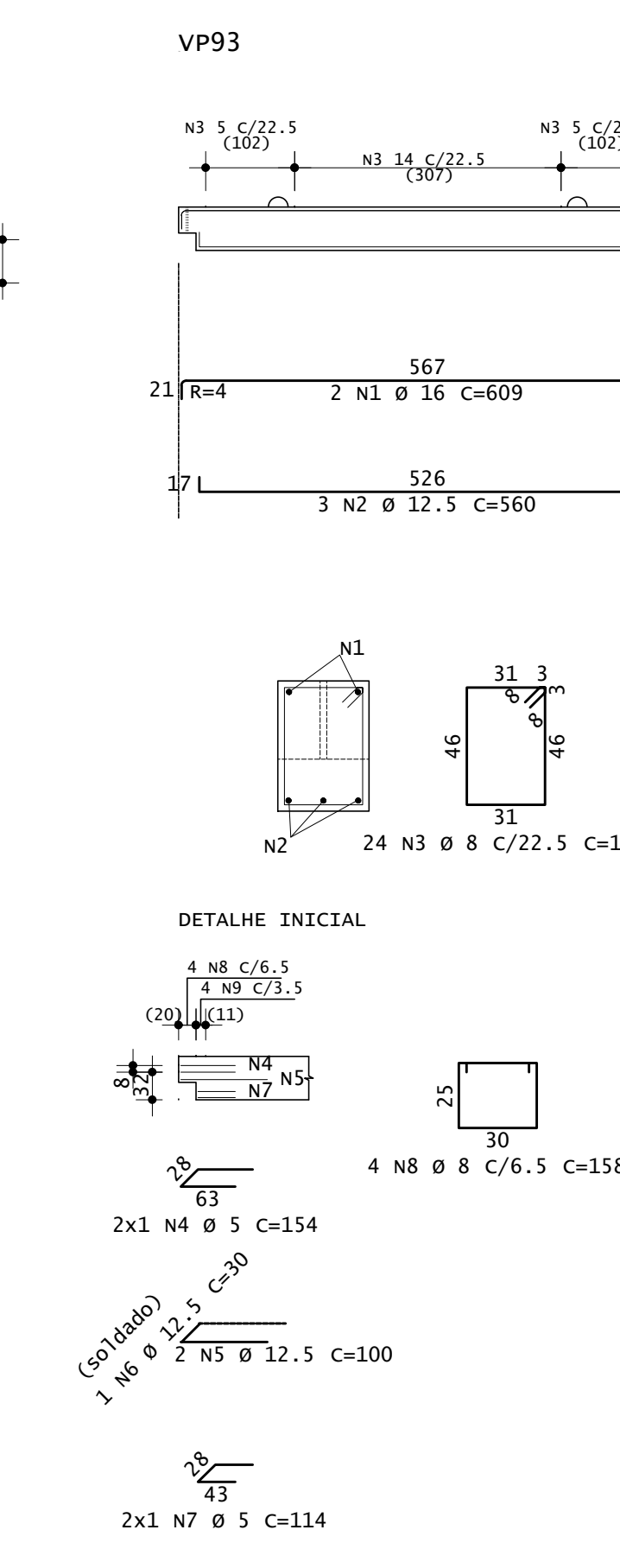
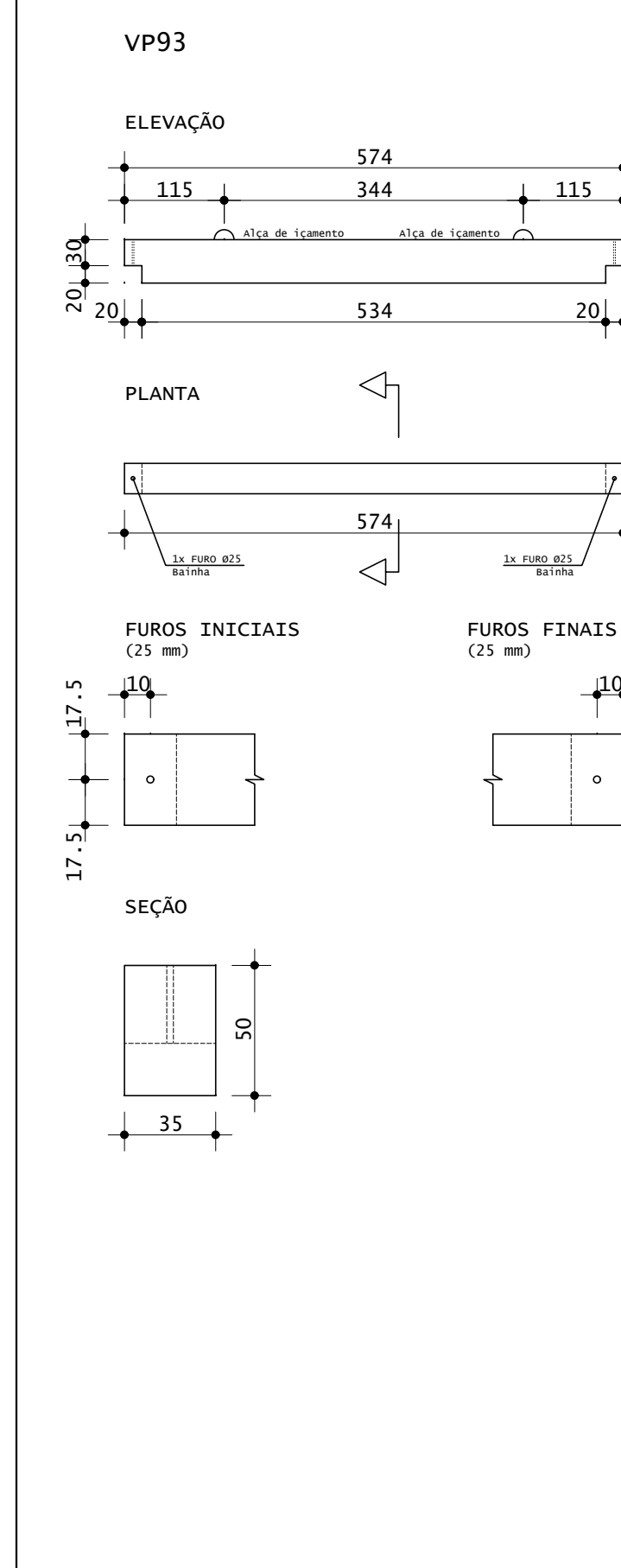


ACO	POS	BIT (mm)	QUANT	COMPRIMENTO (cm)	UNIT	TOTAL (cm)
VP98 (X2)						
S0A	1	16	4	596	2384	
S0A	2	12.5	6	545	3270	
S0A	3	8	46	176	8096	
S0A	4	5	8	174	1392	
S0A	5	12.5	8	110	880	
S0A	6	12.5	4	100	400	
S0A	7	5	8	114	912	
S0A	8	8	6	158	1264	
S0A	9	8	8	158	1264	
S0A	10	8	8	158	1264	
S0A	11	8	8	158	1264	

ACO	BIT	COMPR	PESO
60A	5	23	4
S0A	12.5	44	42
S0A	16	24	38
Peso Total	60A =	24	4 kg
Peso Total	S0A =	132	132 kg

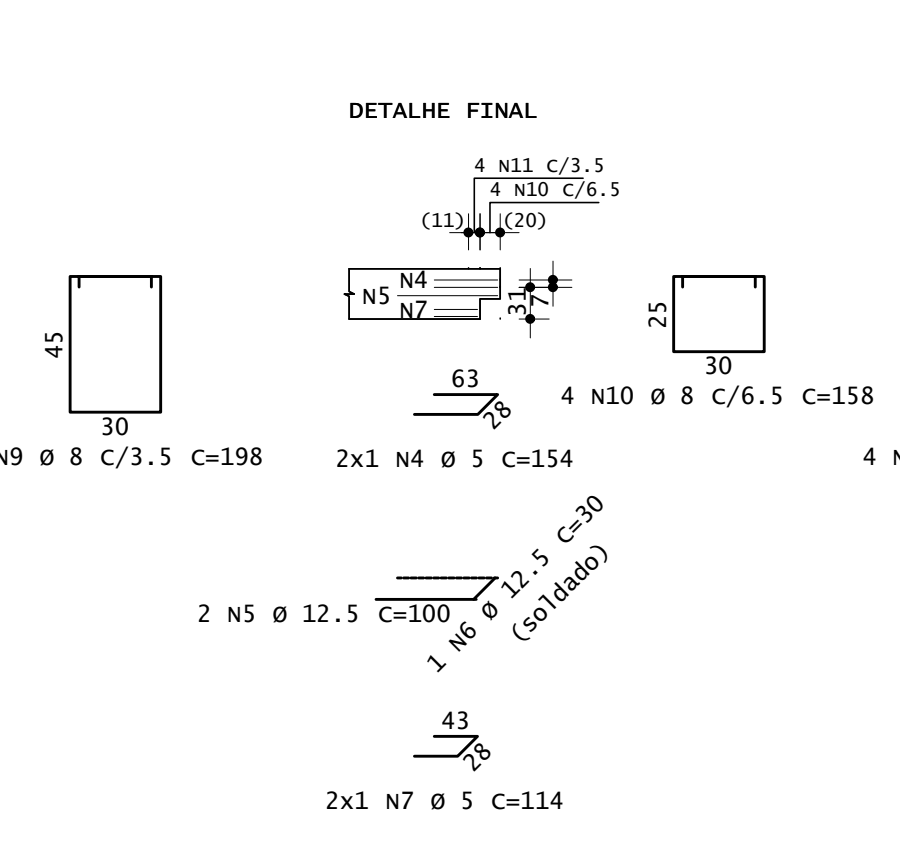


Pavimento	Quant	Volume unit m3	Volume total m3	Peso unit tf	Peso total tf
2º Pav(Lx)	2	0.976	1.953	2.441	4.882
TOTAIS	2		1.953	2.441	4.882

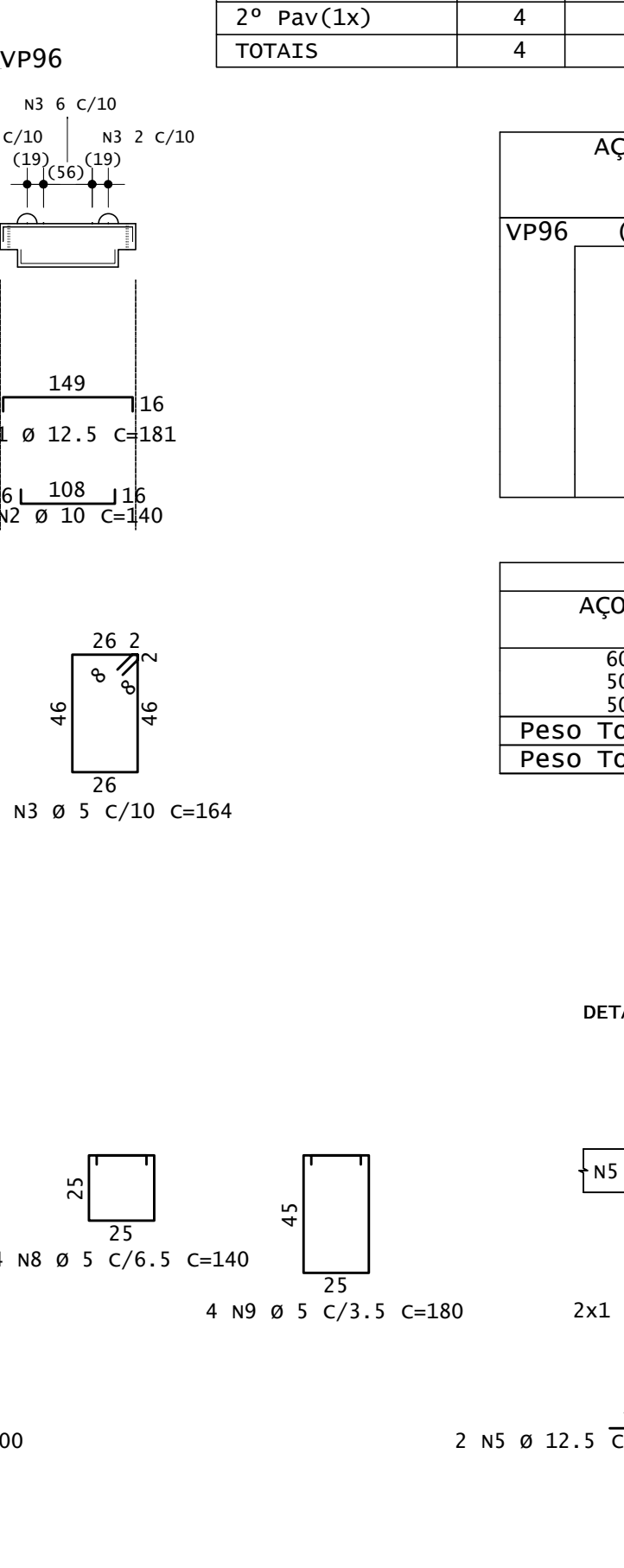
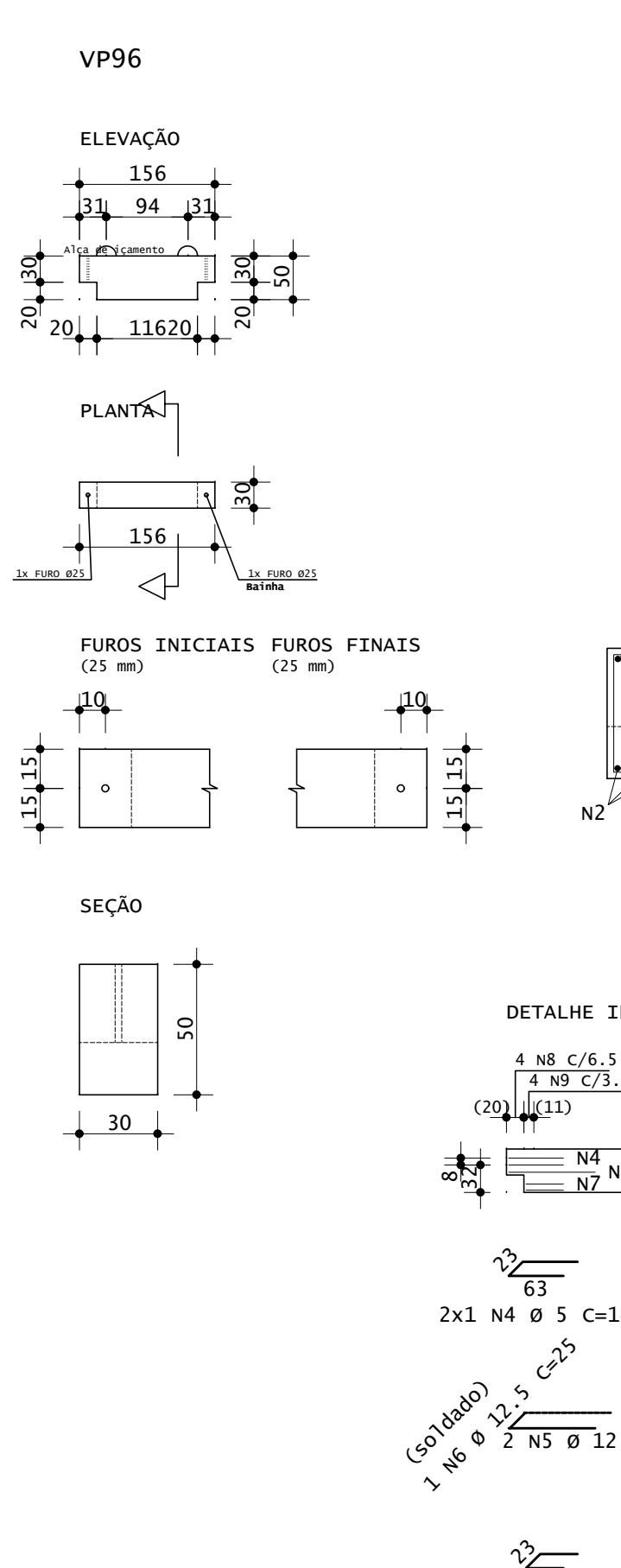


ACO	POS	BIT (mm)	QUANT	COMPRIMENTO (cm)	UNIT	TOTAL (cm)
VP93 (X2)						
S0A	1	16	4	609	2436	
S0A	2	12.5	6	560	3360	
S0A	3	8	48	176	8448	
S0A	4	5	8	154	1232	
S0A	5	12.5	8	100	800	
S0A	6	12.5	4	30	120	
S0A	7	5	8	114	572	
S0A	8	8	8	158	1264	
S0A	9	8	8	158	1264	
S0A	10	8	8	158	1264	
S0A	11	8	8	158	1264	

ACO	BIT	COMPR	PESO
60A	5	21	5
S0A	8	141	56
S0A	12.5	43	41
S0A	16	24	38
Peso Total	60A =	3	3 kg
Peso Total	S0A =	136	136 kg

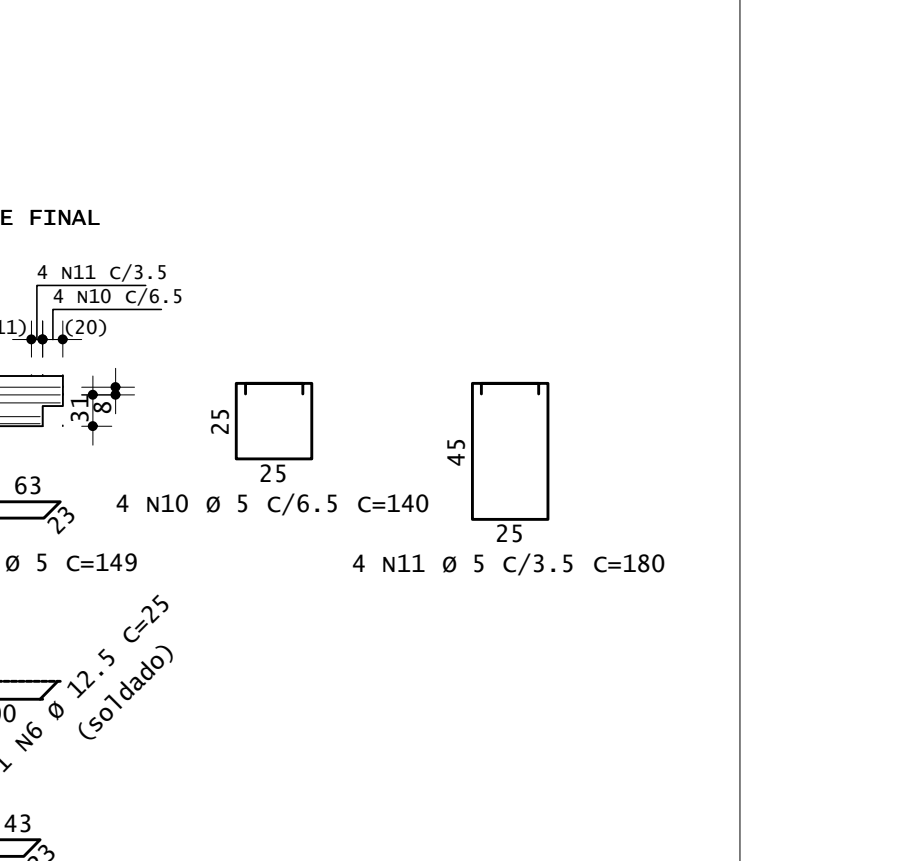


Pavimento	Quant	Volume unit m3	Volume total m3	Peso unit tf	Peso total tf
2º Pav(Lx)	4	0.210	0.840	0.525	2.100
TOTAIS	4		0.840	0.525	2.100

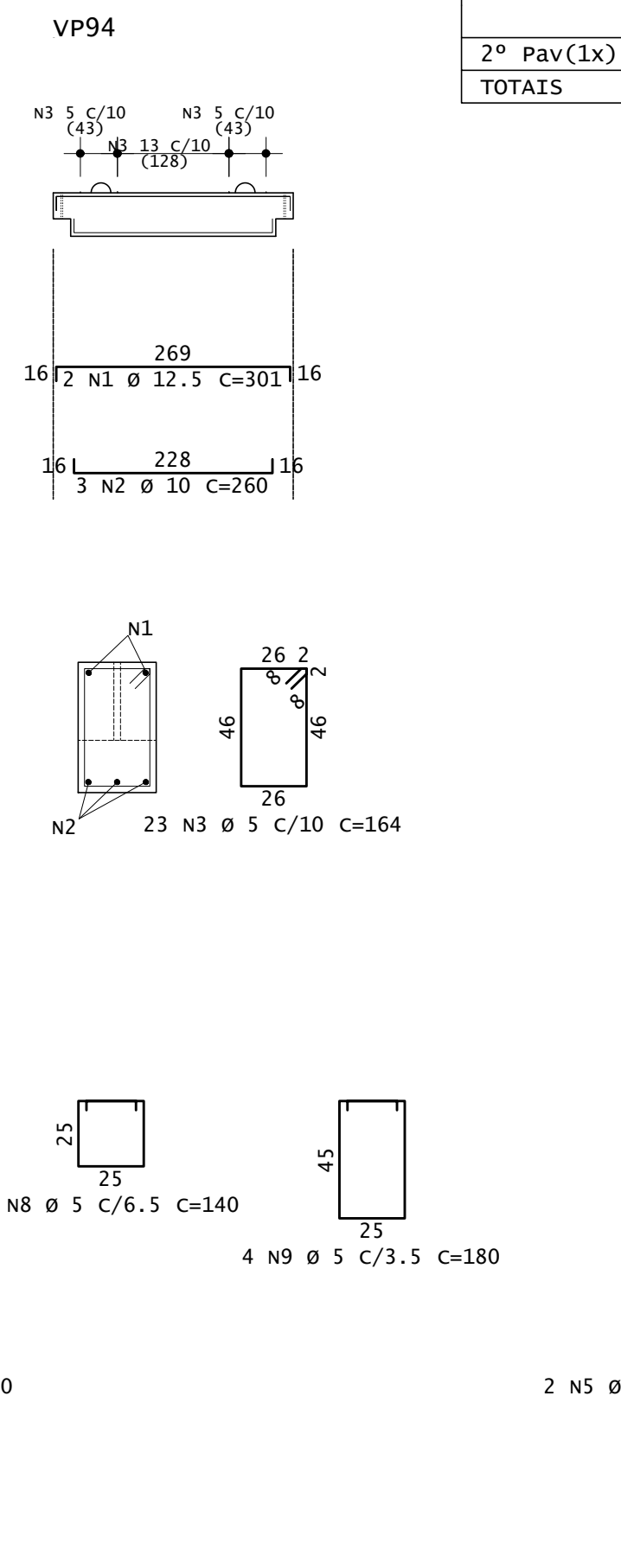
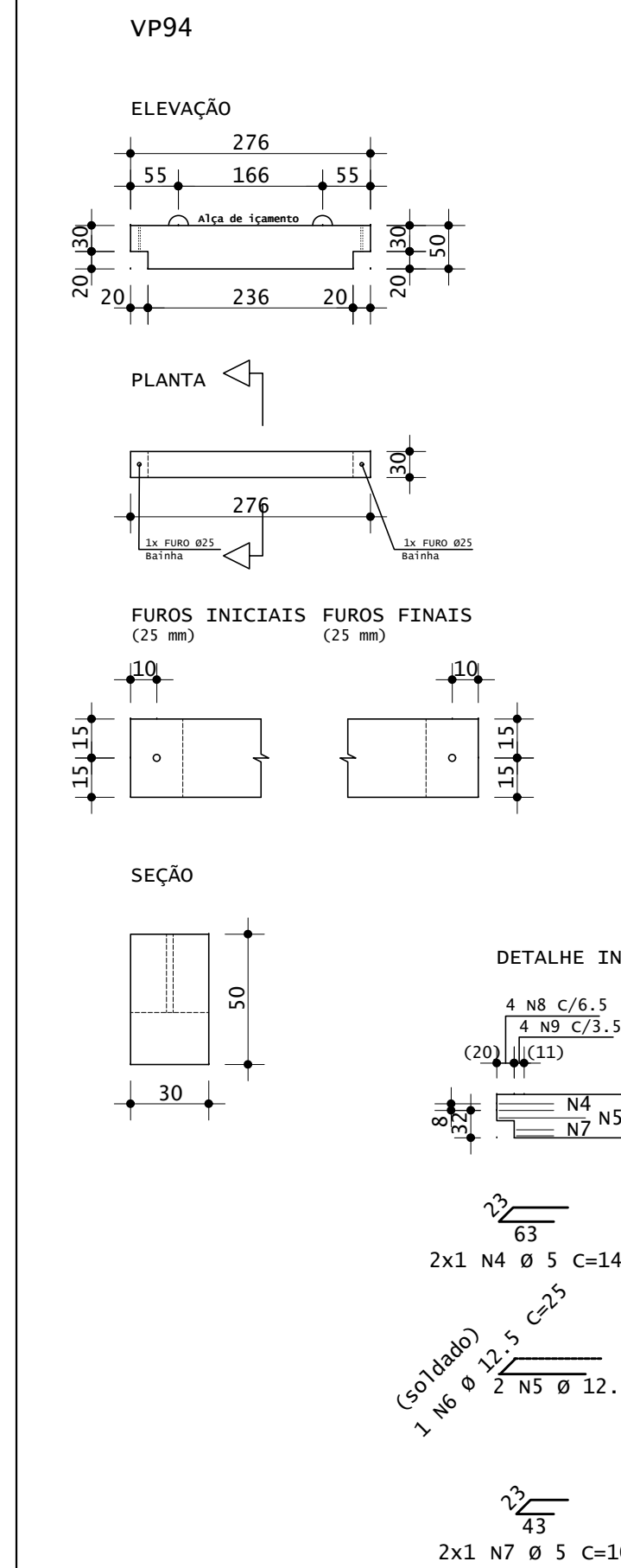


ACO	POS	BIT (mm)	QUANT	COMPRIMENTO (cm)	UNIT	TOTAL (cm)
VP96 (X4)						
S0A	1	12.5	8	181	1448	
S0A	2	10	12	140	1680	
S0A	3	8	40	164	6560	
S0A	4	5	16	149	2384	
S0A	5	12.5	16	100	1600	
S0A	6	12.5	8	25	200	
S0A	7	5	16	109	1744	
S0A	8	8	16	140	2240	
S0A	9	5	16	180	2880	
S0A	10	5	16	140	2240	
S0A	11	5	16	180	2880	

ACO	BIT	COMPR	PESO
60A	5	209	32
S0A	10	17	10
S0A	12.5	32	35
Peso Total	60A =	32	32 kg
Peso Total	S0A =	42	42 kg

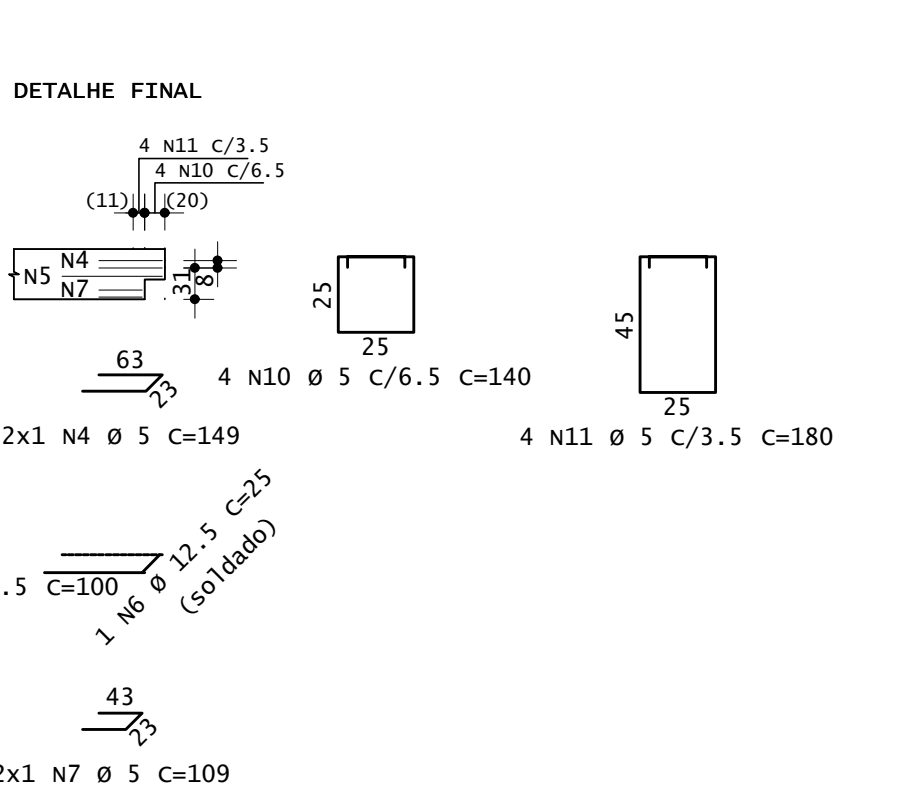


Pavimento	Quant	Volume unit m3	Volume total m3	Peso unit tf	Peso total tf
2º Pav(Lx)	4	0.390	1.560	0.975	3.900
TOTAIS	4		1.560	0.975	3.900

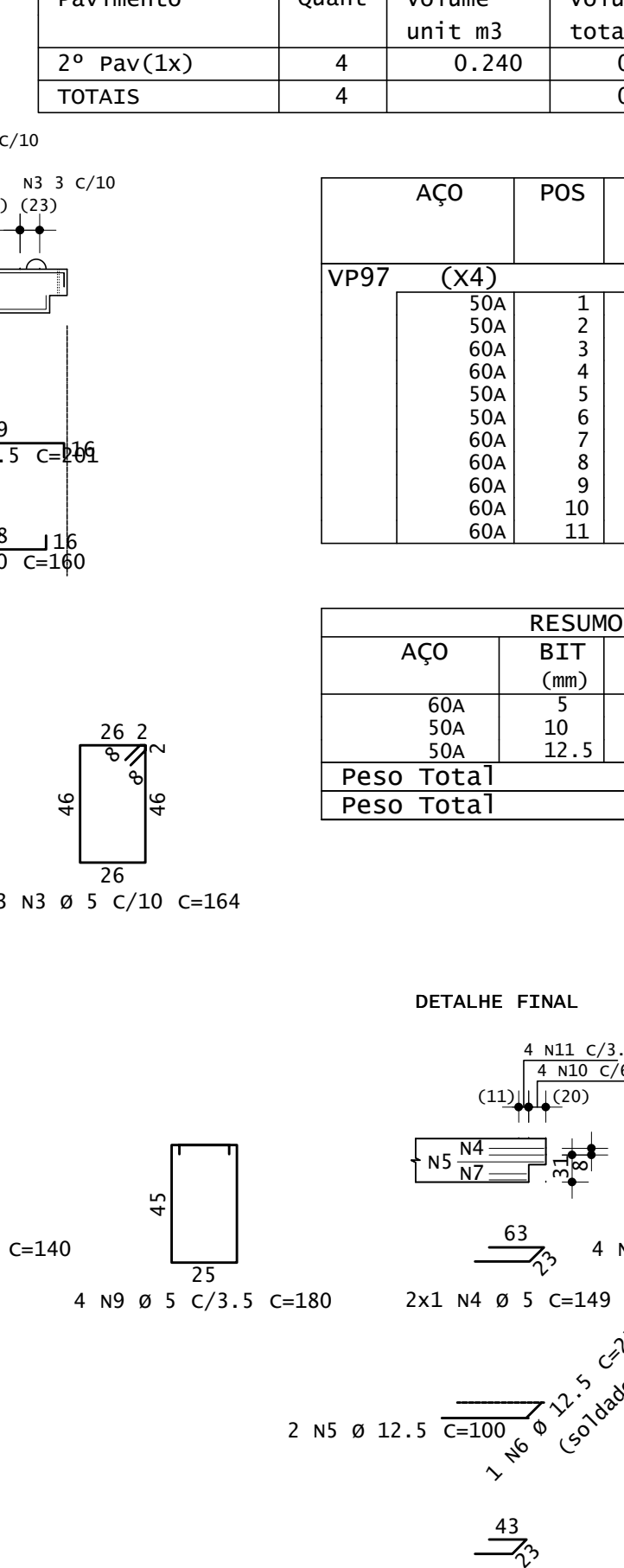
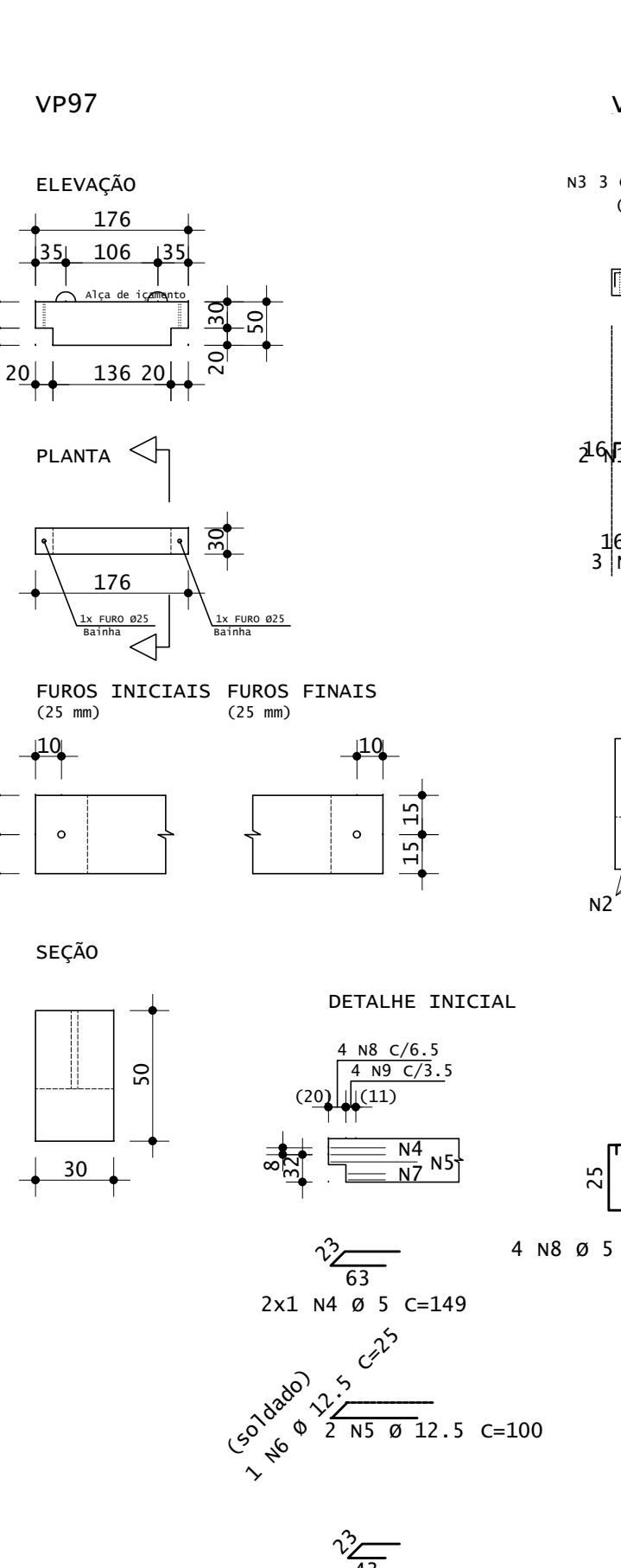


ACO	POS	BIT (mm)	QUANT	COMPRIMENTO (cm)	UNIT	TOTAL (cm)
VP94 (X4)						
S0A	1	12.5	8	301	2408	
S0A	2	10	12	160	3120	
S0A	3	5	92	164	15088	
S0A	4	5	16	149	2384	
S0A	5	12.5	16	100	1600	
S0A	6	12.5	8	25	200	
S0A	7	5	16	109	1744	
S0A	8	8	16	140	2240	
S0A	9	5	16	180	2880	
S0A	10	5	16	140	2240	
S0A	11	5	16	180	2880	

ACO	BIT	COMPR	PESO
60A	5	295	45
S0A	10	31	19
S0A	12.5	42	41
Peso Total	60A =	42	45 kg
Peso Total	S0A =	60	60 kg

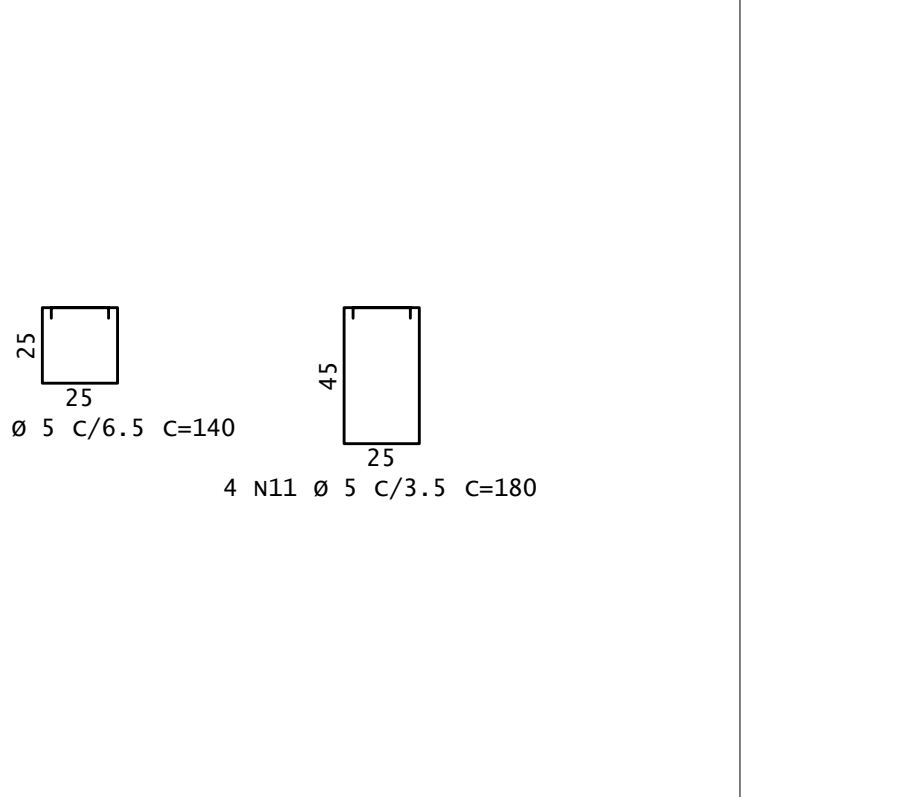


Pavimento	Quant	Volume unit m3	Volume total m3	Peso unit tf	Peso total tf
2º Pav(Lx)	4	0.240	0.960	0.600	2.400
TOTAIS	4		0.960	0.600	2.400



ACO	POS	BIT (mm)	QUANT	COMPRIMENTO (cm)	UNIT	TOTAL (cm)
VP97 (X4)						
S0A	1	12.5	8	201	1608	
S0A	2	10	12	160	3120	
S0A	3	5	52	164	8528	
S0A	4	5	16	149	2384	
S0A	5	12.5	16	100	1600	
S0A	6	12.5	8	25	200	
S0A	7	5	16	109	1744	
S0A	8	8	16	140	2240	
S0A	9	5	16	180	2880	
S0A	10	5	16	140	2240	
S0A	11	5	16	180	2880	

ACO	BIT	COMPR	PESO
60A	5	273	35
S0A	10	19	12
S0A	12.5	34	35
Peso Total	60A =	34	35 kg
Peso Total	S0A =	45	45 kg



NOTAS DE PROJETO:
 1. DIMENSÕES EM CM, EXCETO ONDE INDICADO.
 2. O CONCRETO UTILIZADO DEVERÁ SER DA CLASSE C30 CONFORME DISCRIMINADO NA NBR 6118 (ABNT, 2014).
 3. A MOVIMENTAÇÃO DAS VIGAS SOMENTE PODE SER REALIZADA QUANDO O CONCRETO ATINGIR RESISTÊNCIA A COMPRESSÃO (Rq) DE 21 MPa.
 4. A ESTABILIDADE DAS VIGAS E DA ESTRUTURA, DURANTE O PROCESSO CONSTRUTIVO, DEVERÁ SER AVALIADA PELO CONSTRUTOR.

REV	DESCRICO	APROV	DATA
2	CONFORME COMENTÁRIOS	PJC	PJC
1	REVISÃO GERAL	PJC	PJC
0	INICIAL	PJC	PJC

Projeto estrutural

PROJECALC
ENGENHARIA

ENR CIVIL - WELINGTON RENANN TAVARES
 CREA-PR 020260
 contato: wta@projecalc.com.br

ENR CIVIL - MATHEUS GALDINO DA SILVA
 CREA-PR 136220
 contato: math@projecalc.com.br

CURITIBA - PR (41)3013-4767

Obra

GINÁSIO DE ESPORTES PATO BRANCO
PROJETO EXECUTIVO
ARMADURAS DAS VIGAS V92,V93,V94,V95,V96,V97 e V98

Proprietário
 PREFEITURA MUNICIPAL DE PATO BRANCO

Endereço
 RUA BENJAMIN BORGES, BAIRRO FRARON, PATO BRANCO - PR

Escala
 INDICADA

Data
 09/2019

NÚMERO
 D-032-CV-012