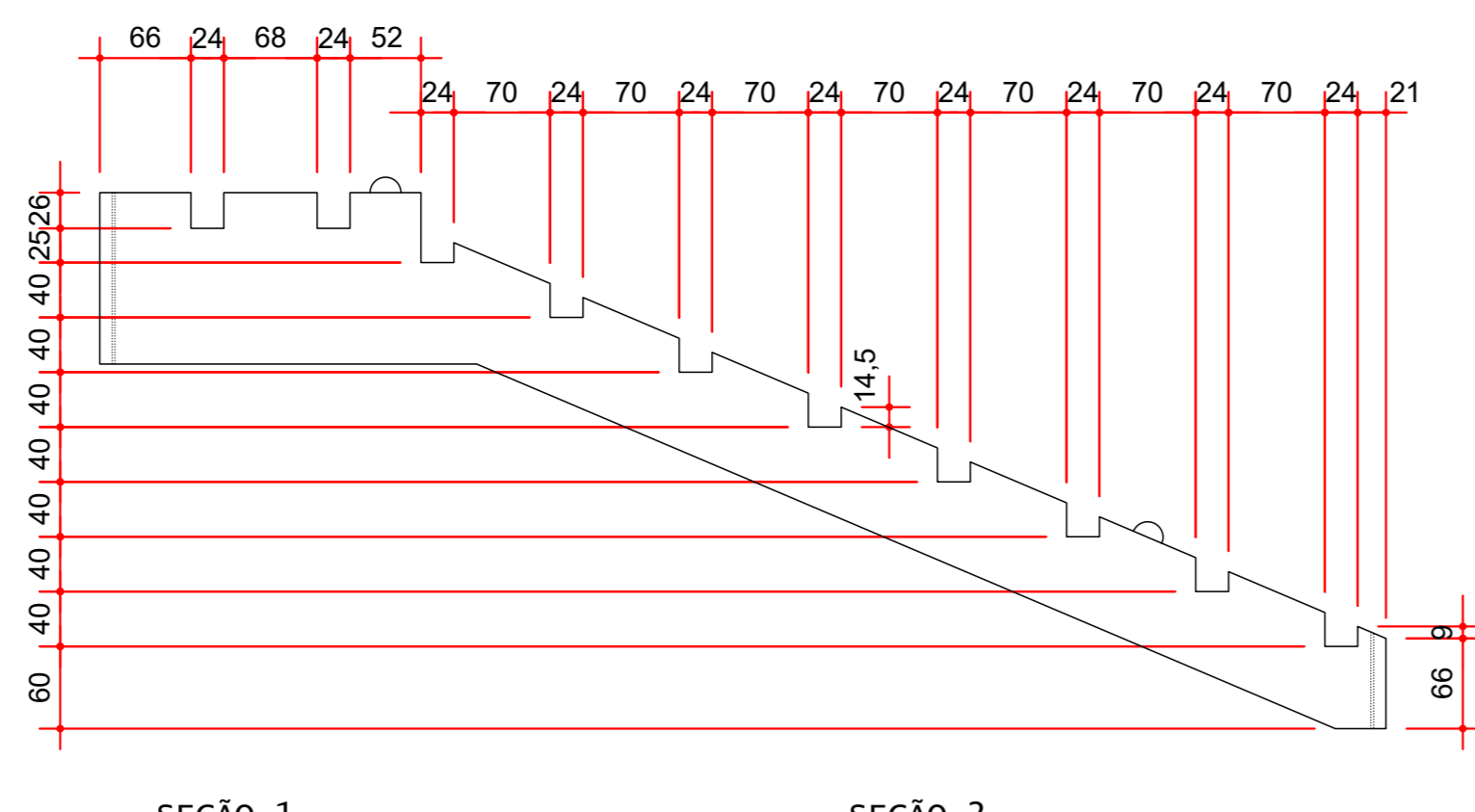
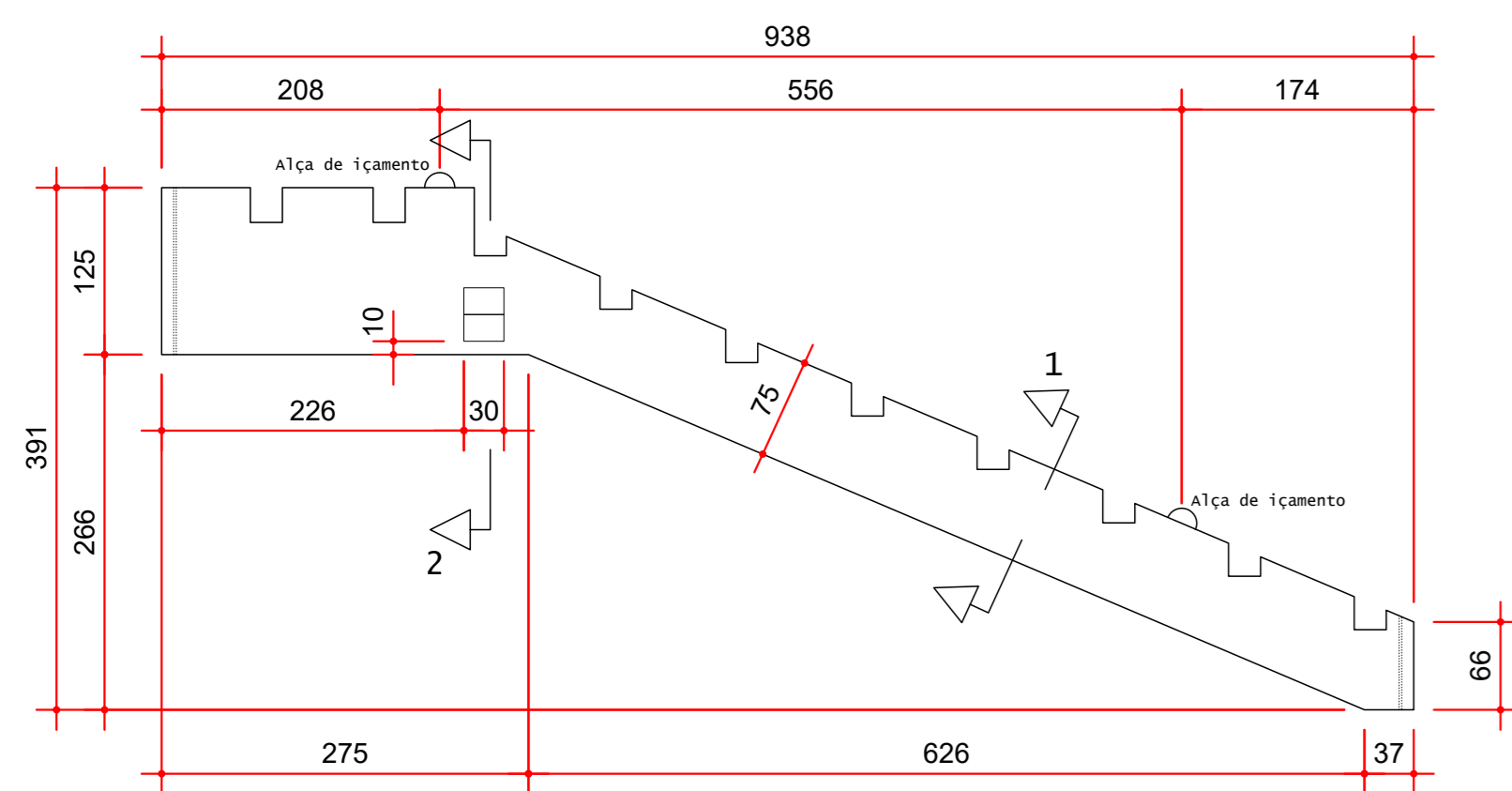
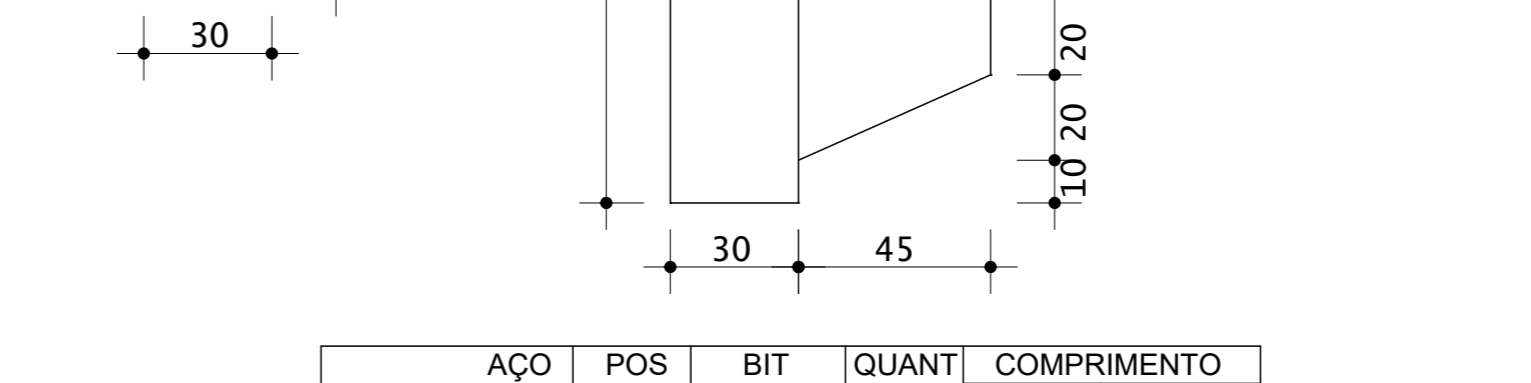
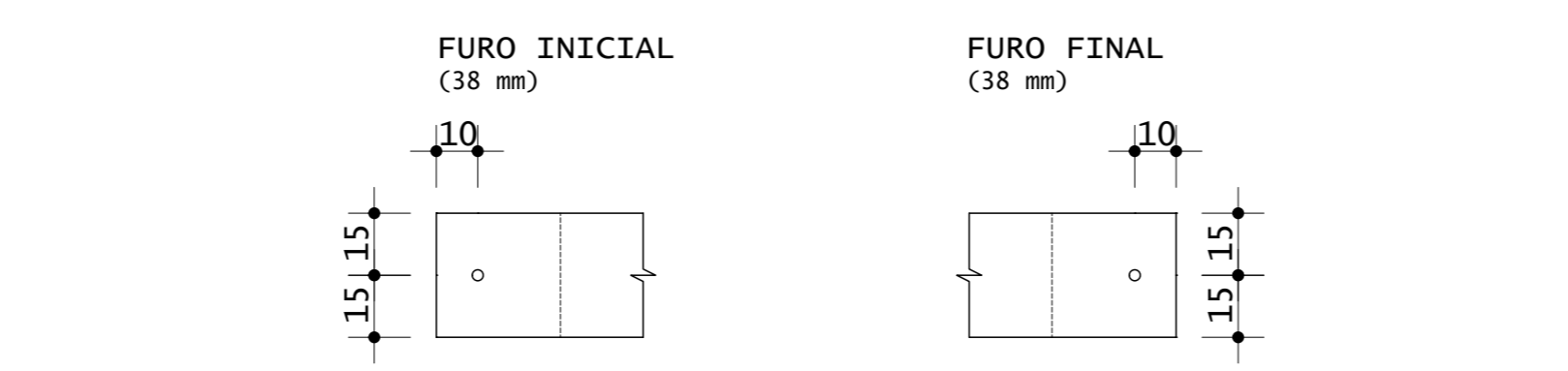
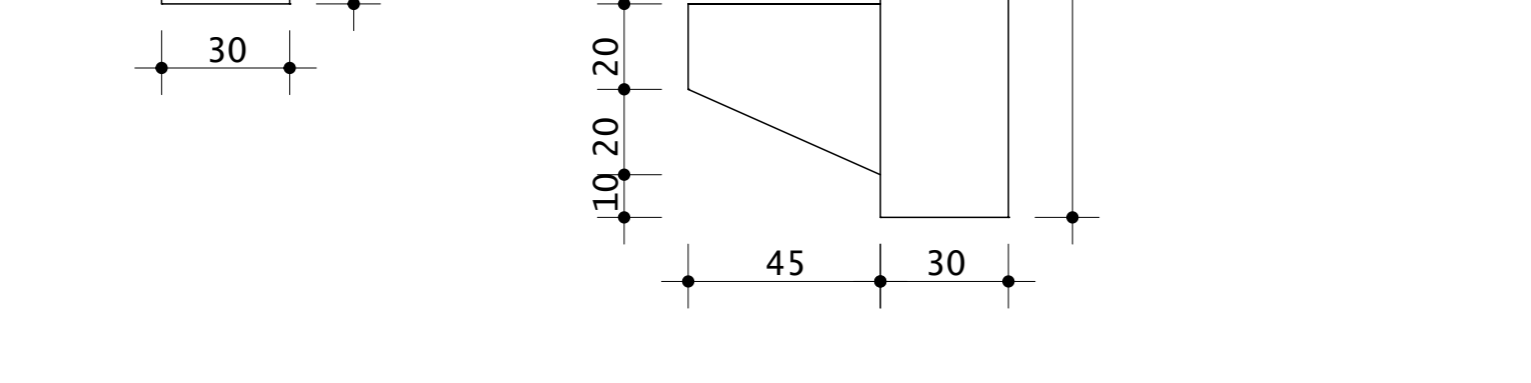
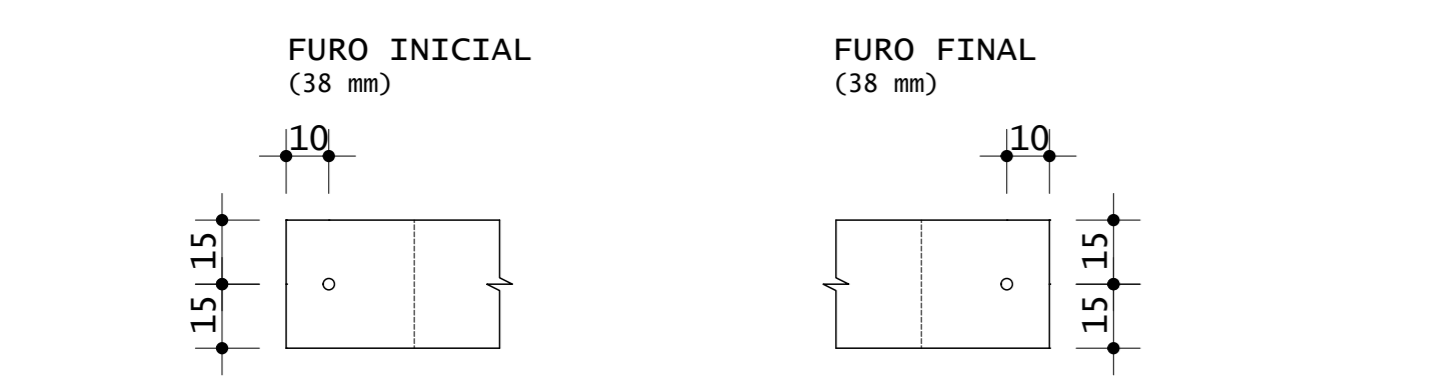
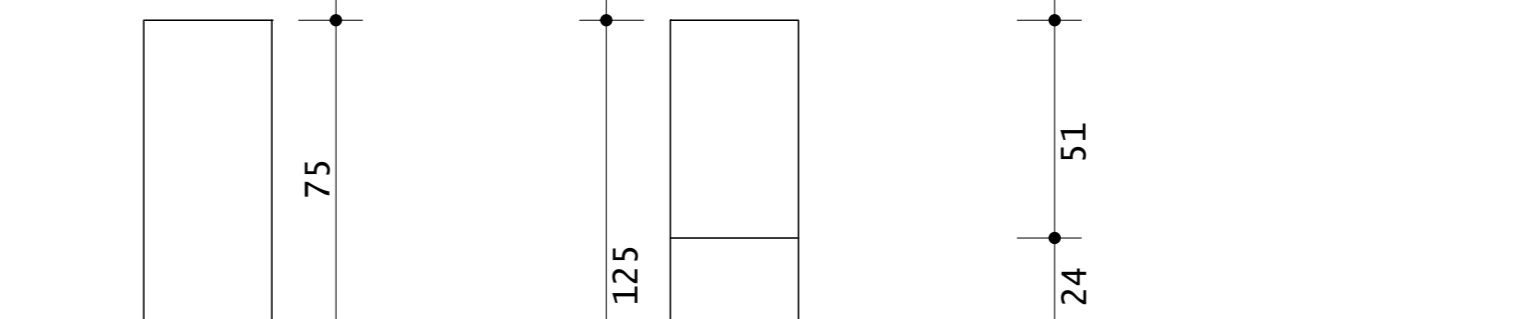
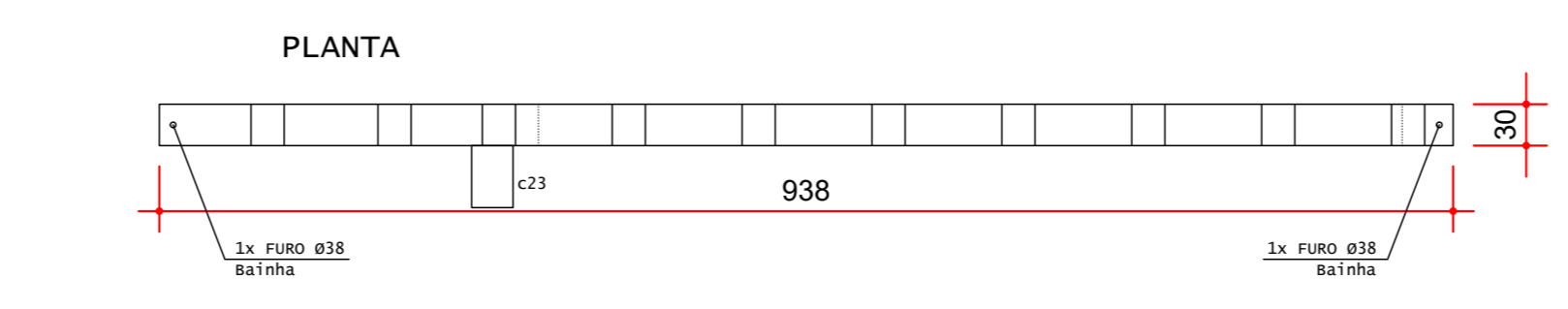
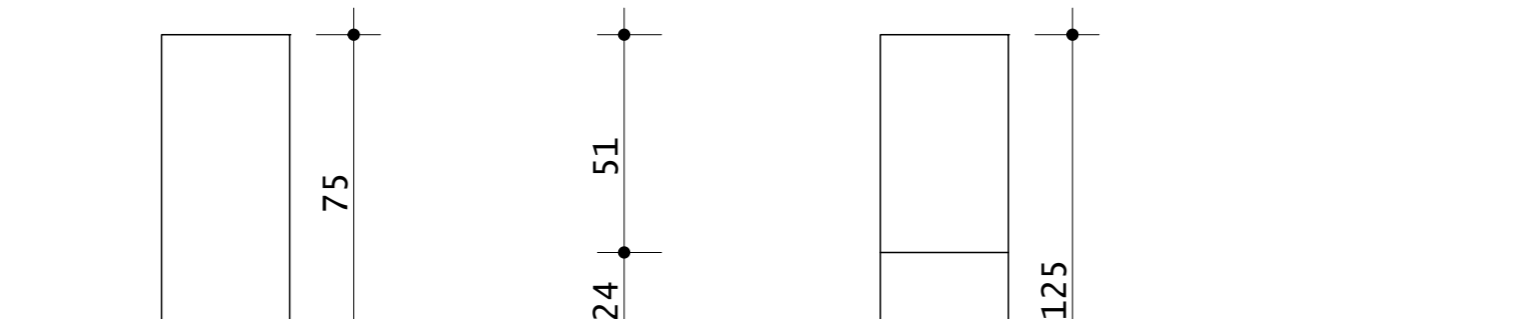
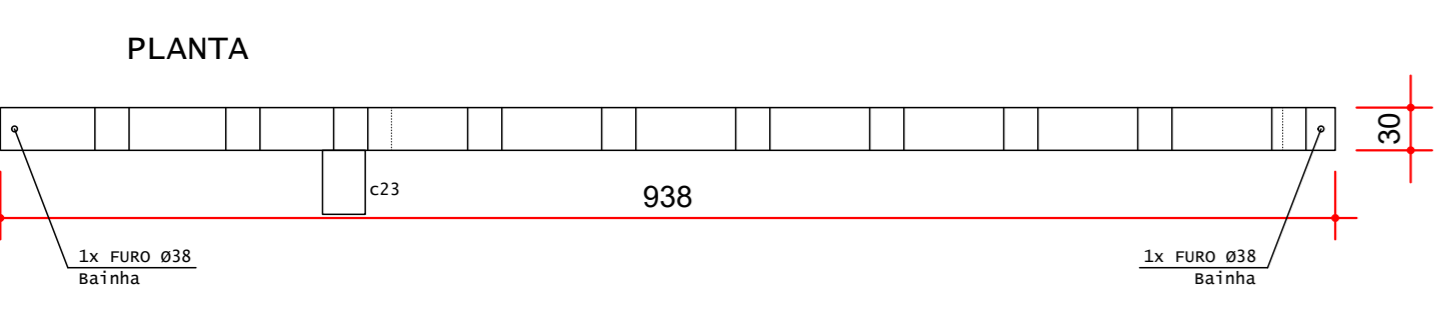
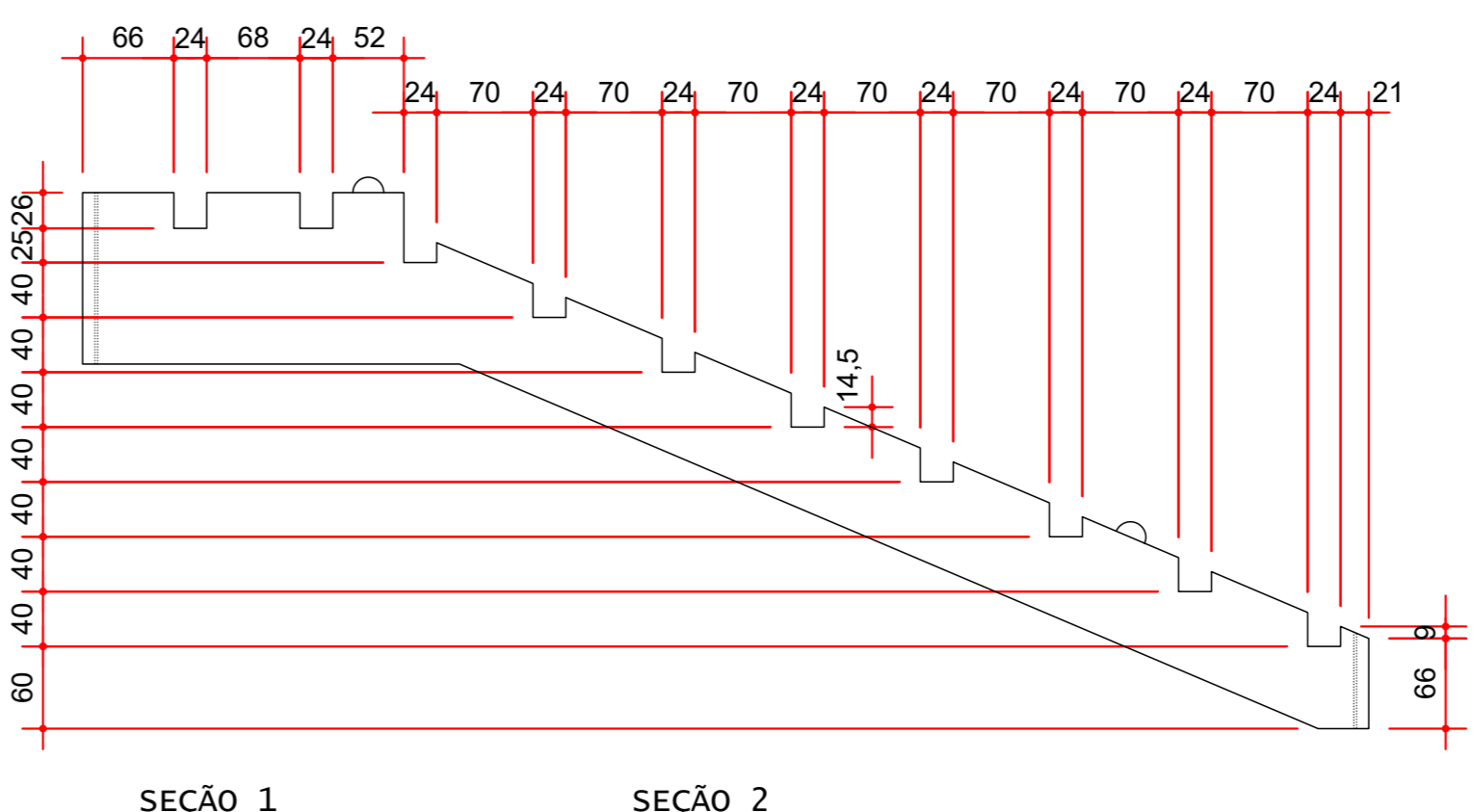
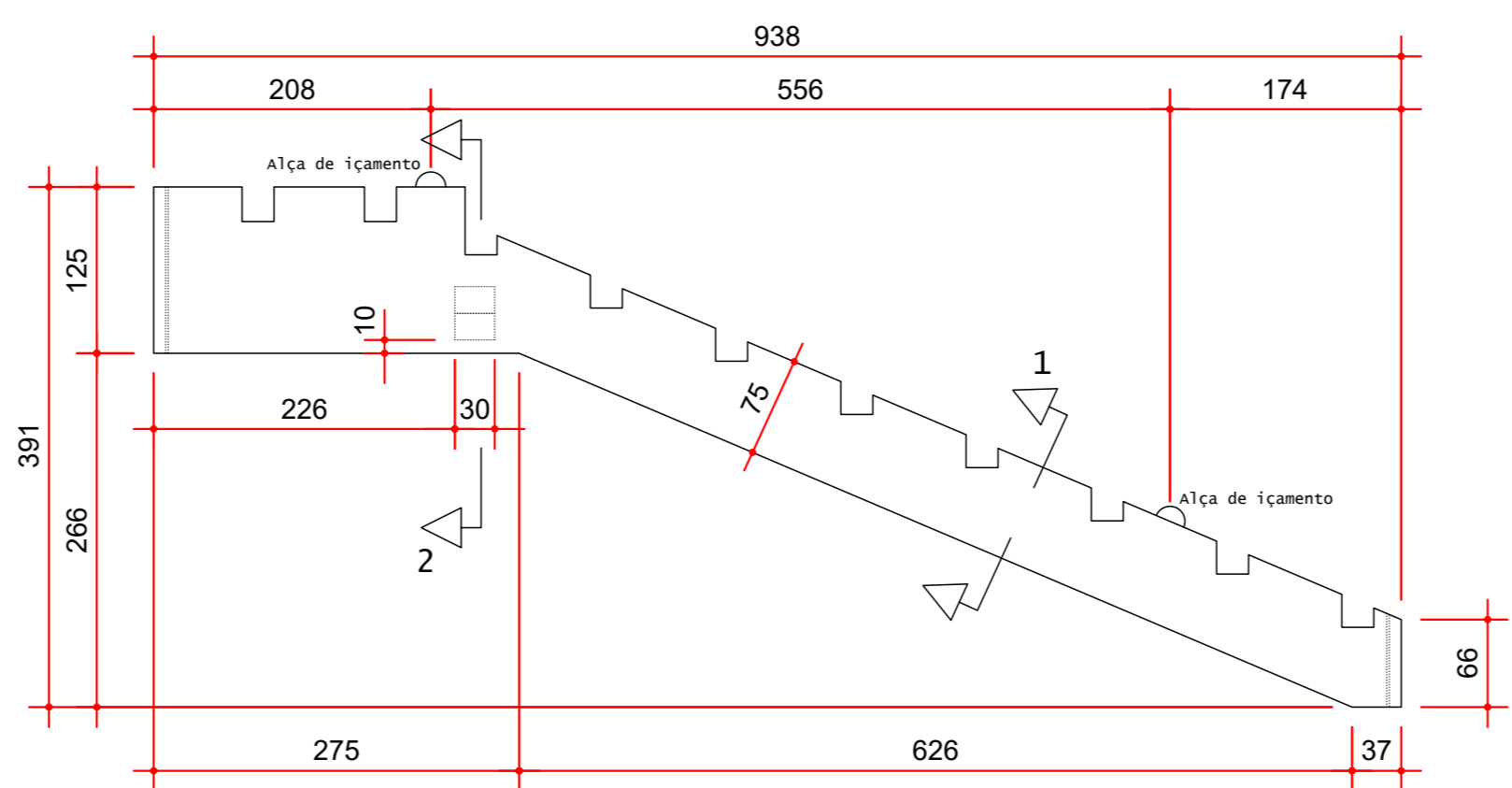


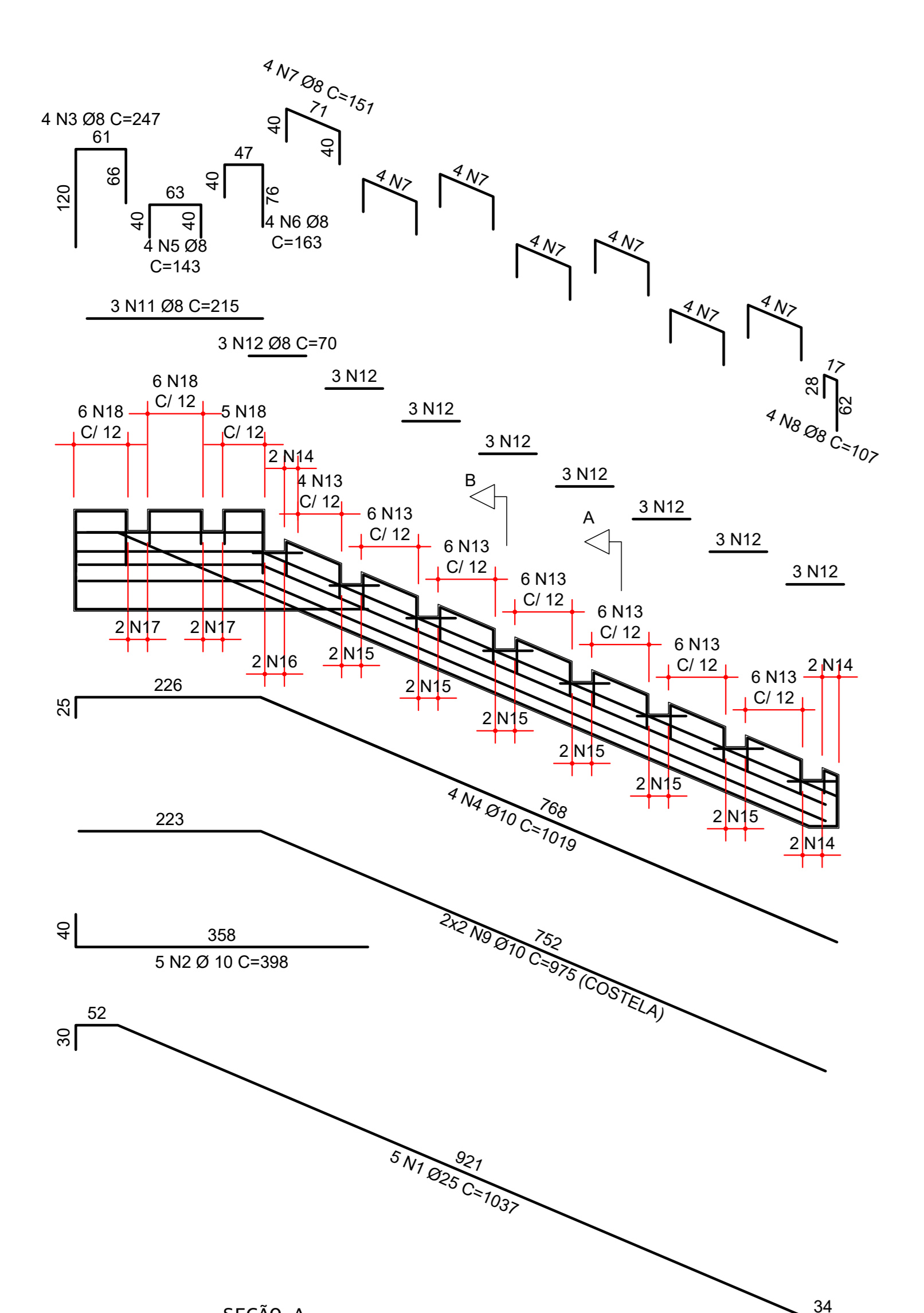
VJ25 (x2)
ELEVACÃO



VJ35 (x2)
ELEVACÃO



VJ25 (x2)
ARMADURA

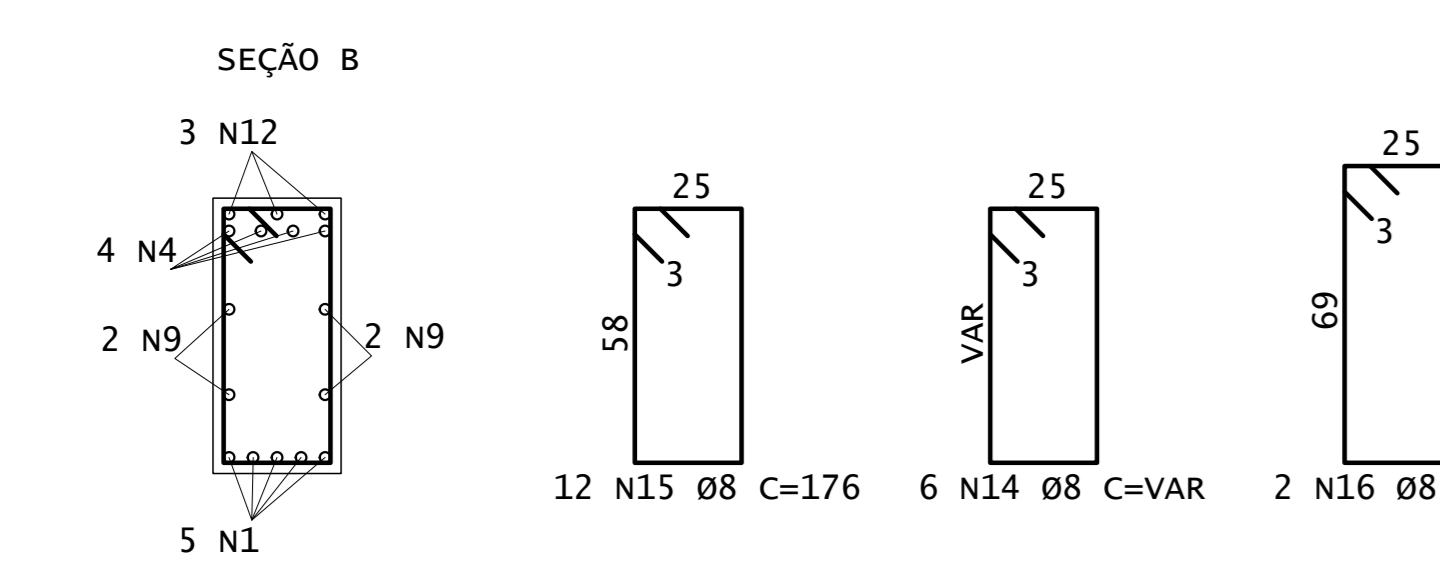
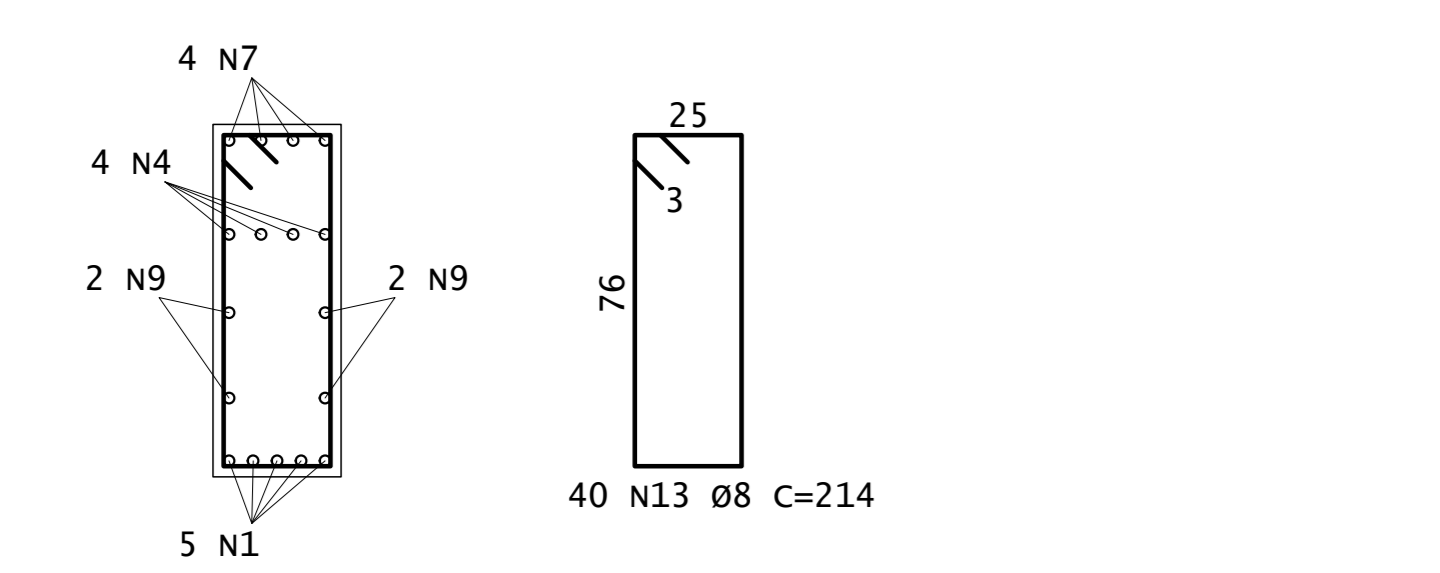
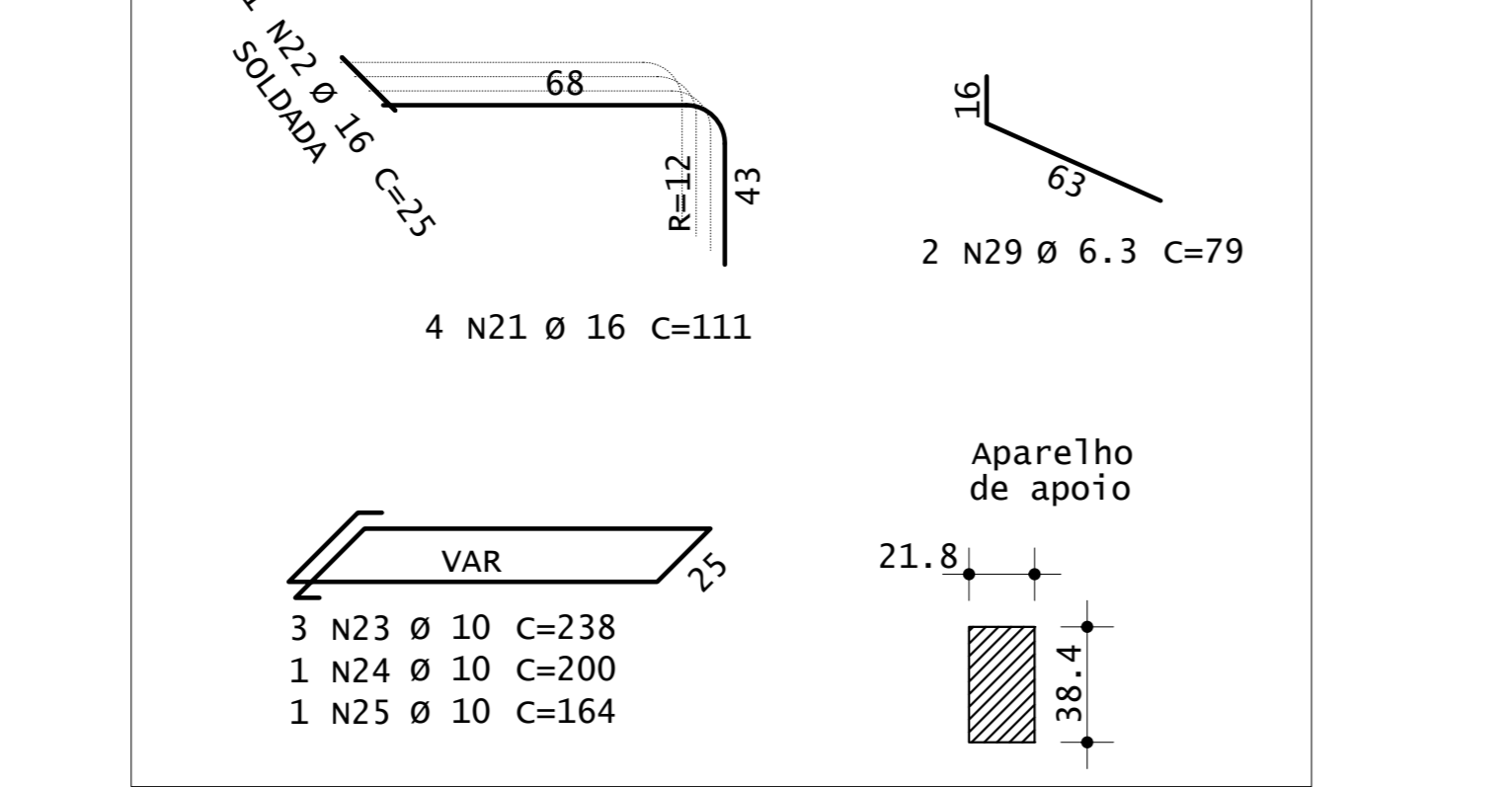
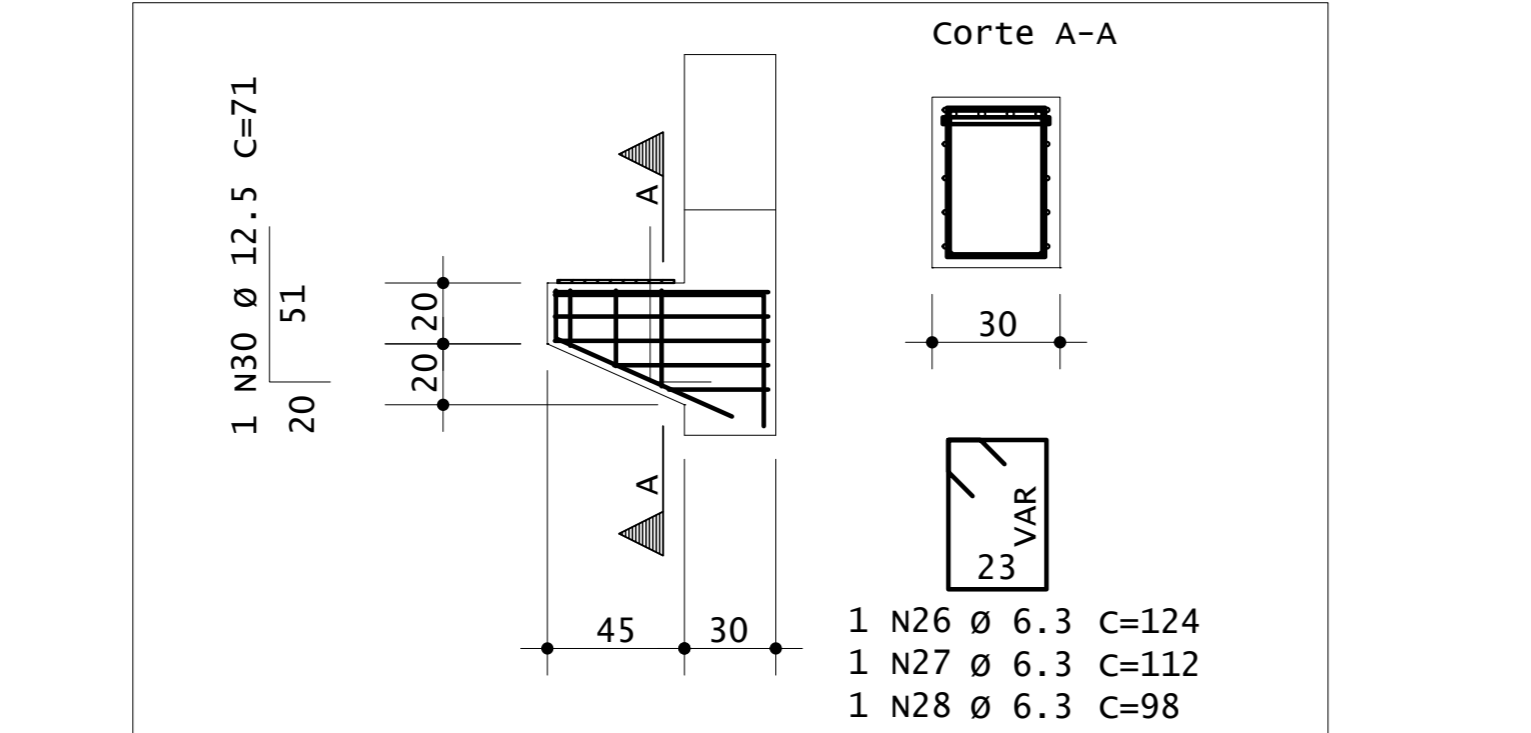


ÁÇO	POS	BIT (mm)	QUANT	COMPRIMENTO UNIT (cm)	TOTAL (cm)	
VJ25	50A	1	25,0	5	1037	5185
50A	2	10,0	5	398	1990	
50A	3	8,0	4	247	988	
50A	4	10,0	4	1019	4076	
50A	5	8,0	4	143	572	
50A	6	8,0	4	163	652	
50A	7	8,0	4	143	572	
50A	8	8,0	4	107	428	
50A	9	10,0	4	975	3900	
50A	10	8,0	4	975	3900	
50A	11	8,0	3	215	855	
50A	12	8,0	24	70	1680	
50A	13	8,0	40	314	12560	
50A	14	8,0	6	VAR	1170	
50A	15	8,0	12	176	2112	
50A	16	8,0	2	200	400	
50A	17	8,0	4	248	992	
50A	18	8,0	17	300	5100	
50A	19	8,0	17	300	5100	
50A	20	16,0	4	111	444	
50A	21	16,0	1	25	25	
50A	22	16,0	1	25	25	
50A	23	10,0	3	238	714	
50A	24	10,0	1	200	200	
50A	25	10,0	1	184	184	
50A	26	6,3	1	124	124	
50A	27	6,3	1	112	112	
50A	28	6,3	1	98	98	
50A	29	6,3	2	79	158	
50A	30	12,5	1	71	71	

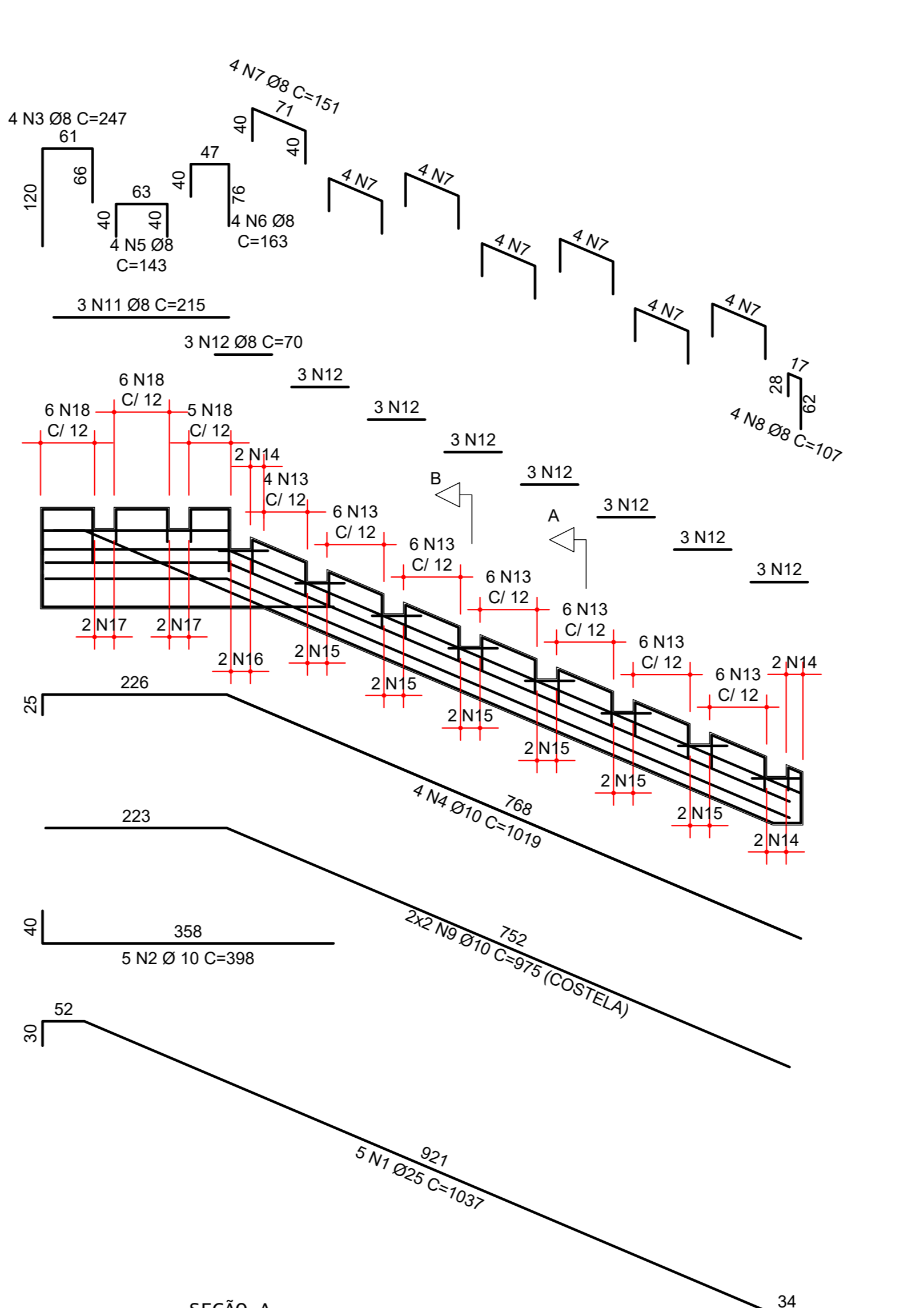
ÁÇO	BIT (mm)	COMP. (m)	PESO (kg)
50A	6,3	5	2
50A	8,0	276	111
50A	10,0	111	70
50A	12,5	1	1
50A	16,0	5	8
50A	25,0	52	208

Peso Total (1x) = 400 kg
Peso Total (2x) = 800 kg

Pavimento	Quant	Volume m3	Área de Forma m2
ARQUIBANCADA	1	2,45	21,22
TOTAIS	2	4,90	42,44



VJ35 (x2)
ARMADURA

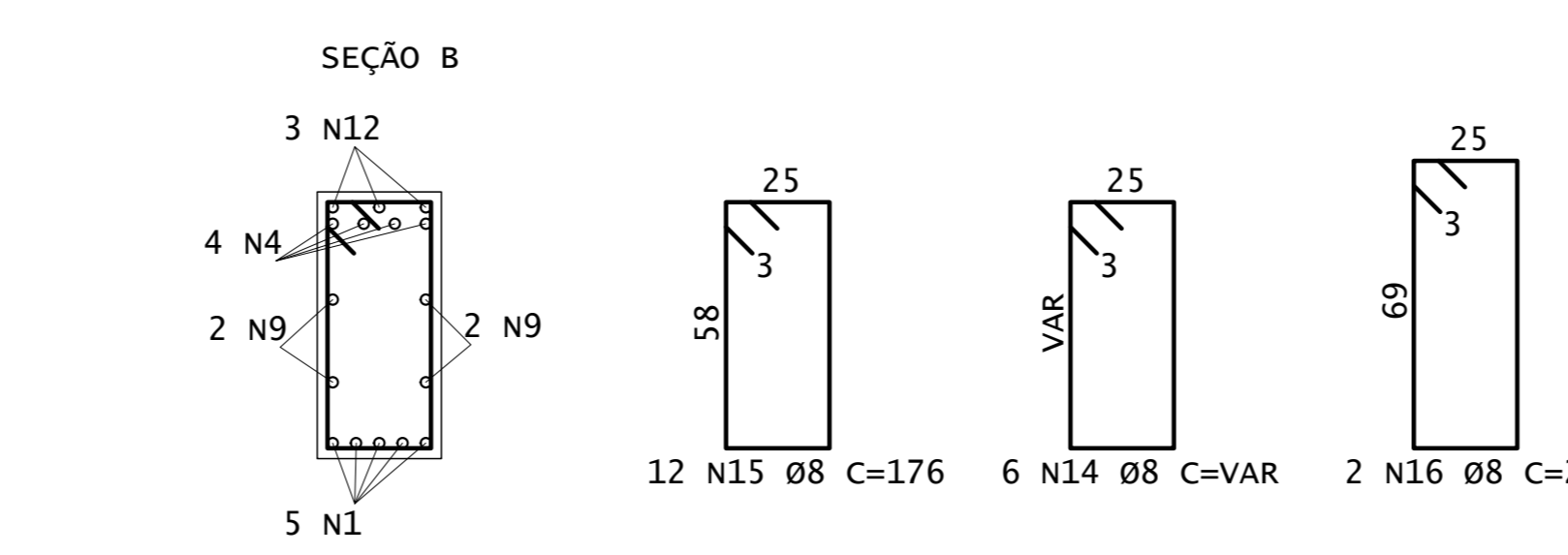
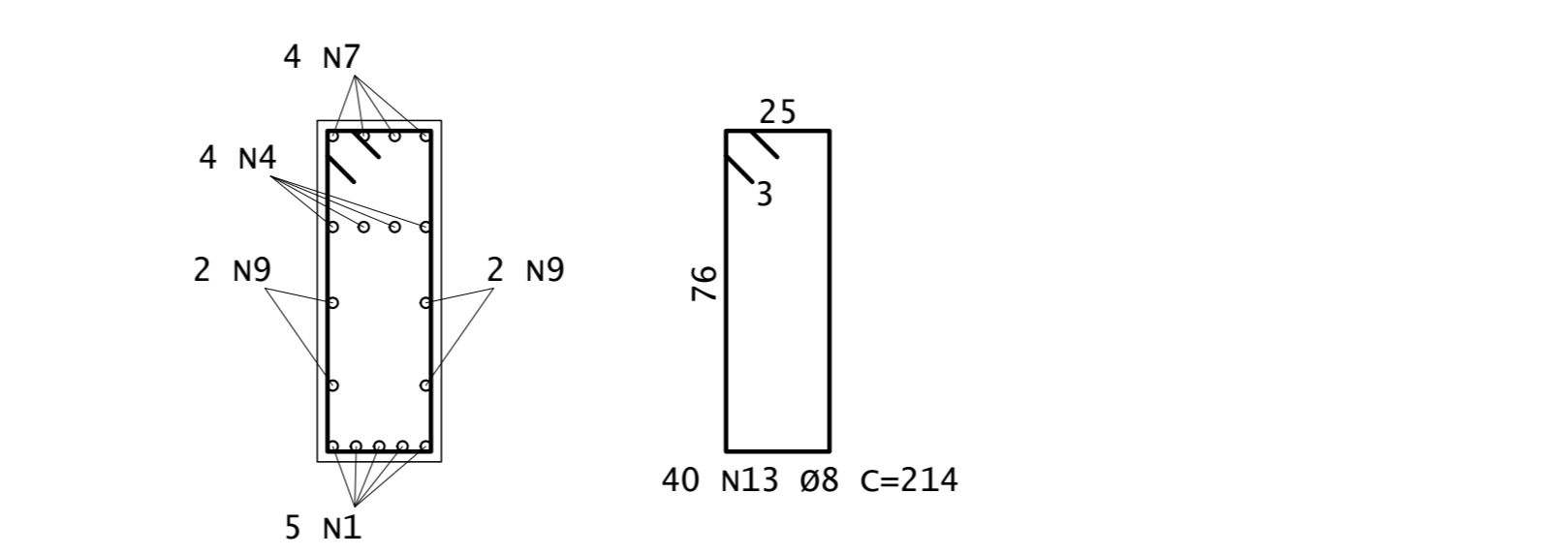
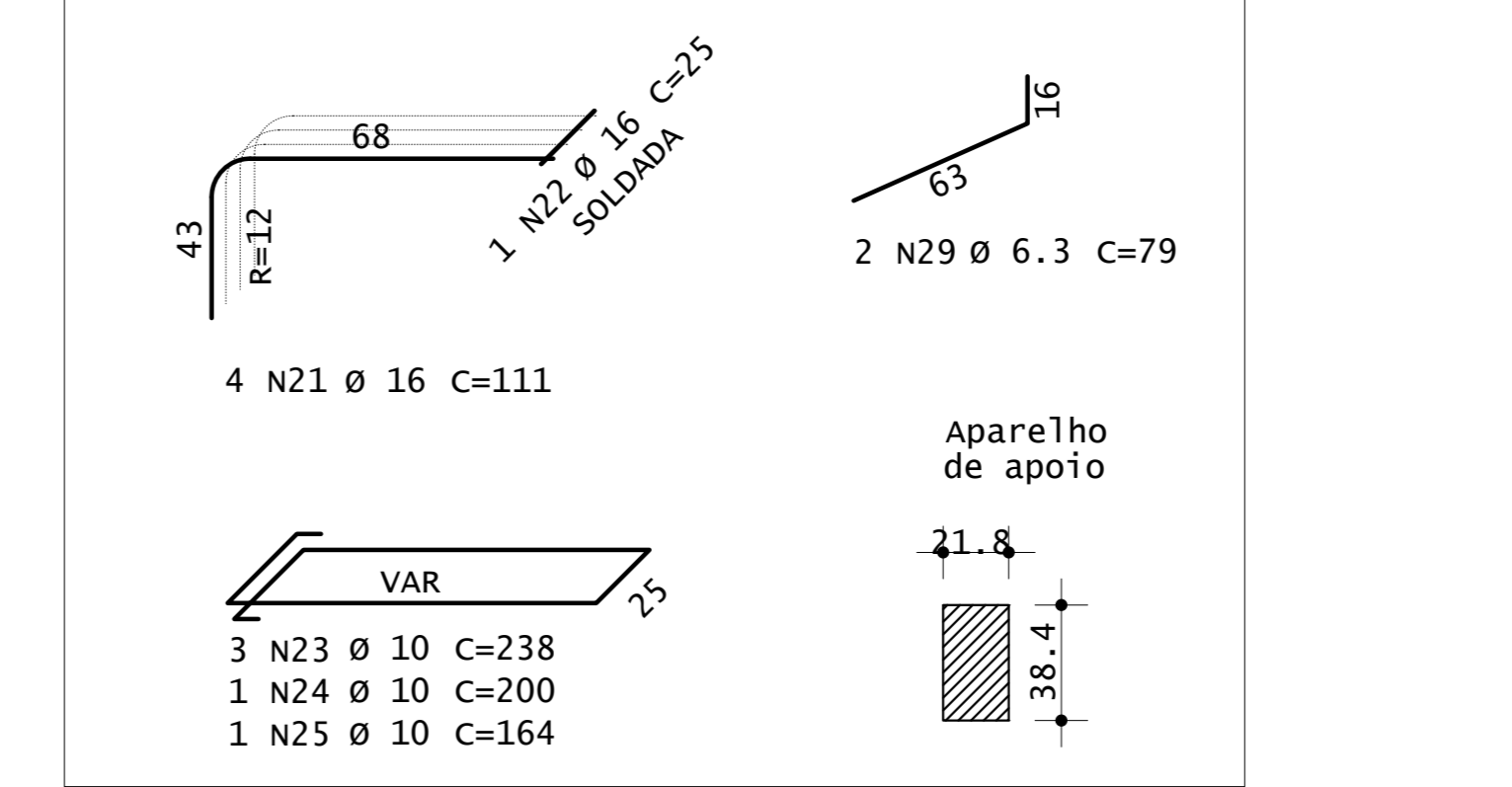
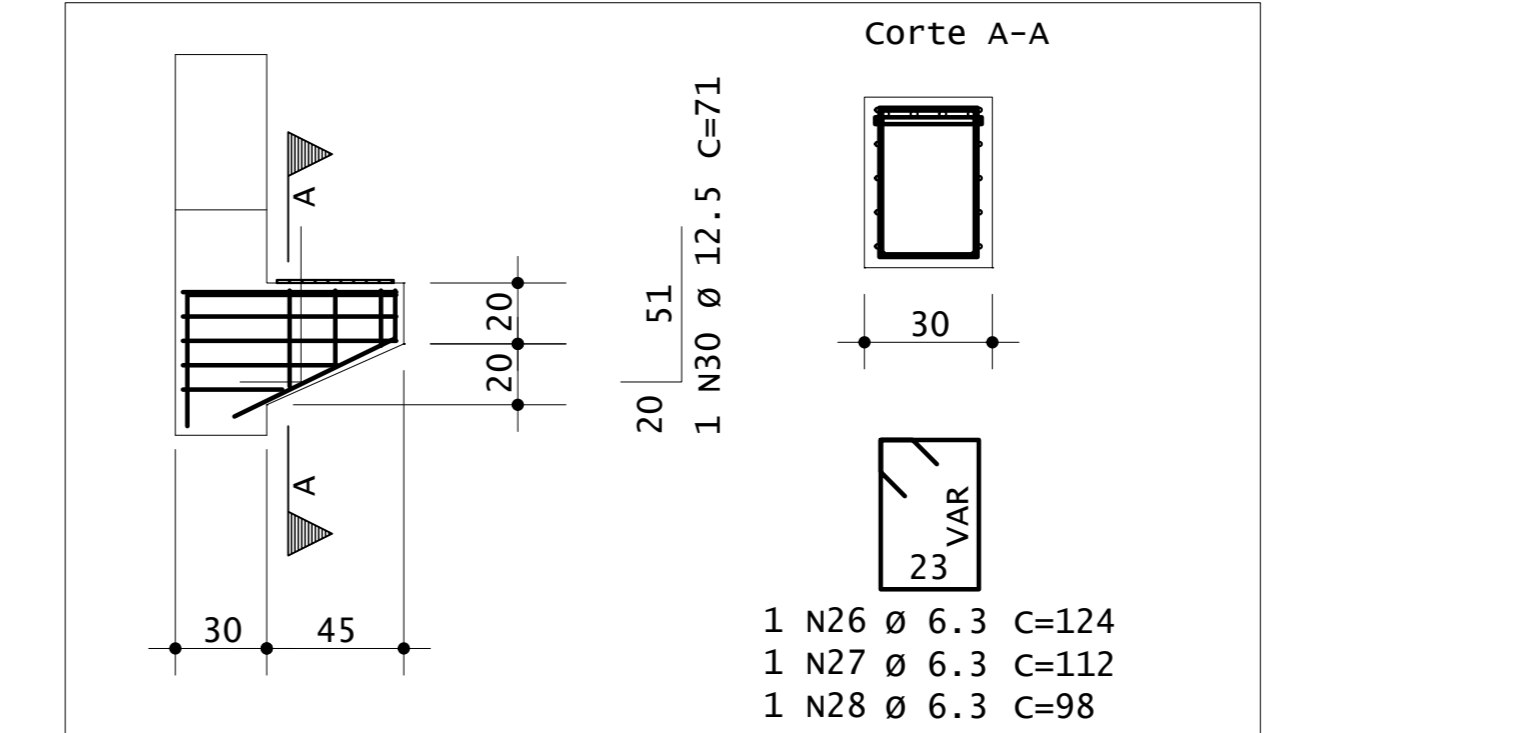


ÁÇO	POS	BIT (mm)	QUANT	COMPRIMENTO UNIT (cm)	TOTAL (cm)	
VJ35	50A	1	25,0	5	1037	5185
50A	2	10,0	5	398	1990	
50A	3	8,0	4	247	988	
50A	4	10,0	4	1019	4076	
50A	5	8,0	4	143	572	
50A	6	8,0	4	163	652	
50A	7	8,0	4	143	572	
50A	8	8,0	4	107	428	
50A	9	10,0	4	975	3900	
50A	10	8,0	4	975	3900	
50A	11	8,0	3	215	855	
50A	12	8,0	24	70	1680	
50A	13	8,0	40	314	12560	
50A	14	8,0	6	VAR	1170	
50A	15	8,0	12	176	2112	
50A	16	8,0	2	200	400	
50A	17	8,0	4	248	992	
50A	18	8,0	17	300	5100	
50A	19	8,0	17	300	5100	
50A	20	16,0	4	111	444	
50A	21	16,0	1	25	25	
50A	22	16,0	1	25	25	
50A	23	10,0	3	238	714	
50A	24	10,0	1	200	200	
50A	25	10,0	1	184	184	
50A	26	6,3	1	124	124	
50A	27	6,3	1	112	112	
50A	28	6,3	1	98	98	
50A	29	6,3	2	79	158	
50A	30	12,5	1	71	71	

ÁÇO	BIT (mm)	COMP. (m)	PESO (kg)
50A	6,3	5	2
50A	8,0	276	111
50A	10,0	111	70
50A	12,5	1	1
50A	16,0	5	8
50A	25,0	52	208

Peso Total (1x) = 400 kg
Peso Total (2x) = 800 kg

Pavimento	Quant	Volume m3	Área de Forma m2
ARQUIBANCADA	1	2,45	21,22
TOTAIS	2	4,90	42,44



- NOTAS DE PROJETO:
- DIMENSÕES EM CM, EXCETO ONDE INDICADO.
 - O CONCRETO UTILIZADO DEVERÁ SER DA CLASSE C30 CONFORME DISCRIMINADO NA NBR 6118 (ABNT, 2014).
 - A MOVIMENTAÇÃO DAS LAJES DE ARQUIBANCADA SOMENTE PODE SER REALIZADA QUANDO O CONCRETO ATINGIR RESISTÊNCIA À COMPRESSÃO (fcj) DE 21 MPa.
 - A ESTABILIDADE DAS ARQUIBANCADAS E DA ESTRUTURA, DURANTE O PROCESSO CONSTRUTIVO, DEVERÁ SER AVALIADA PELO CONSTRUTOR.

REV	DESCRIÇÃO	DESENHO	APROV.	DATA
2	TABELA DE VOLUME E ÁREA DE FORMA	PJC	PJC	25/03/2022
1	REVISÃO GERAL	PJC	PJC	20/09/2019
0	INICIAL	PJC	PJC	23/08/2019

Projeto estrutural

PROJECALC
ENGENHARIA

ENGRº CIVIL - WELINGTON RENANIN TAVARES
CREA PR 103268/D
contato: wrtavares@projecalc.com.br

ENGRº CIVIL - MATEUS GALDINO DA SILVA
CREA PR 134229/D
contato: matheus@projecalc.com.br

CURITIBA - PR (41) 3013-4787

Obra

GINÁSIO DE ESPORTES PATO BRANCO

PROJETO EXECUTIVO

FORMAS E ARMADURAS - VIGAS JACARÉ

VJ25 E VJ35

Proprietário
PREFEITURA MUNICIPAL DE PATO BRANCO

Endereço
RUA BENJAMIN BORGES, BAIRRO FRARON, PATO BRANCO - PR

Escala
INDICADA

Data
09/2019

NÚMERO
D-032-CJ-003