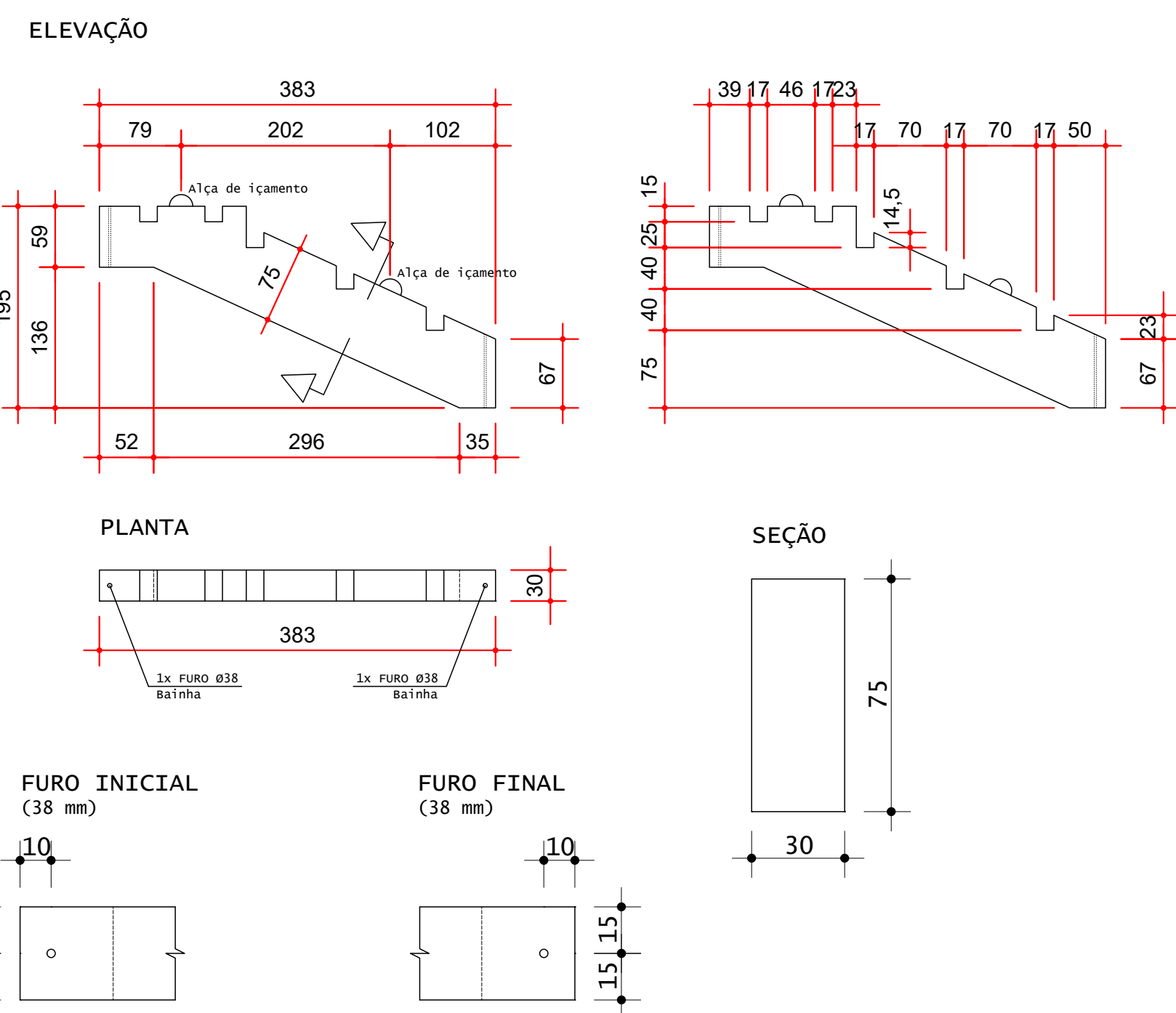
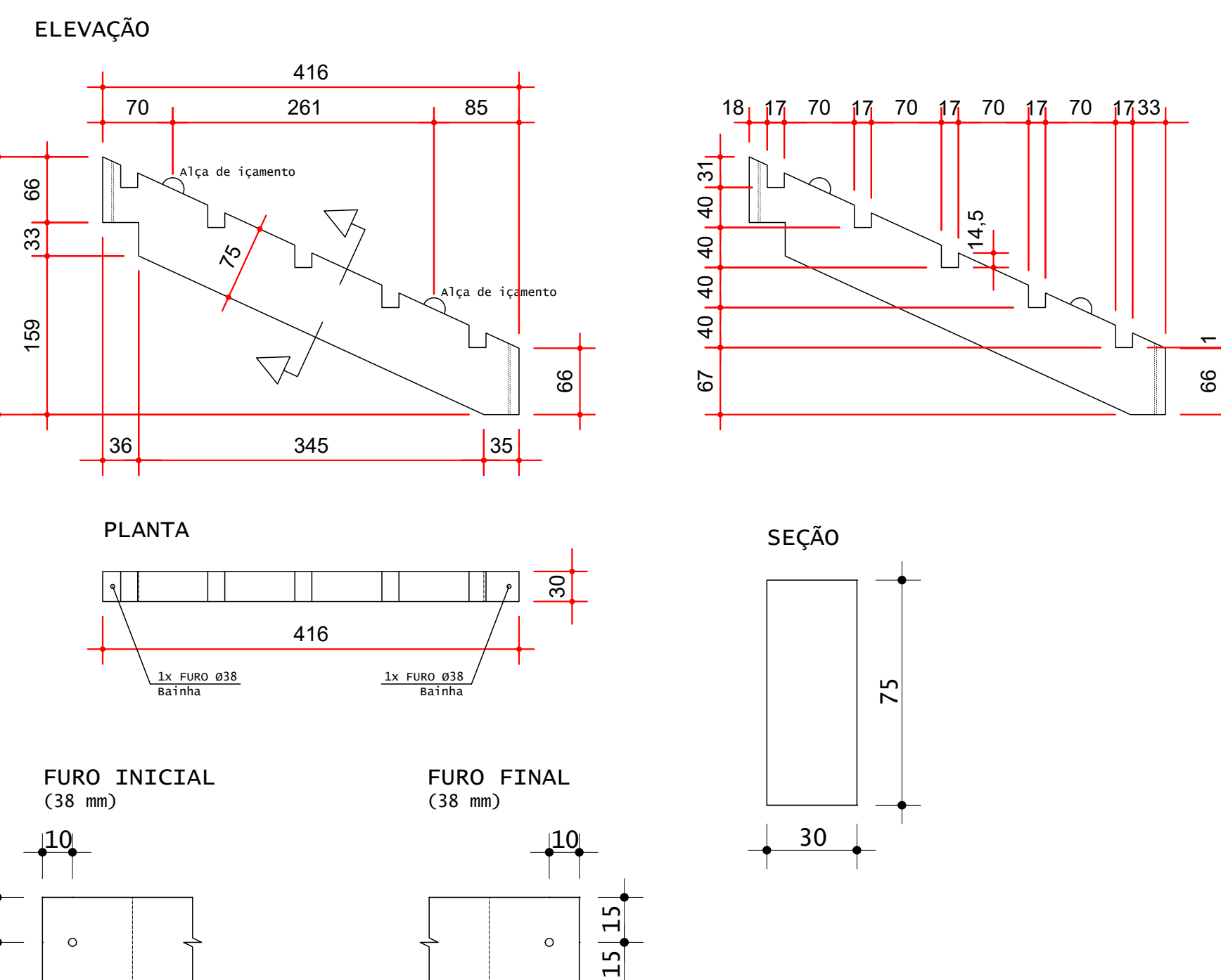


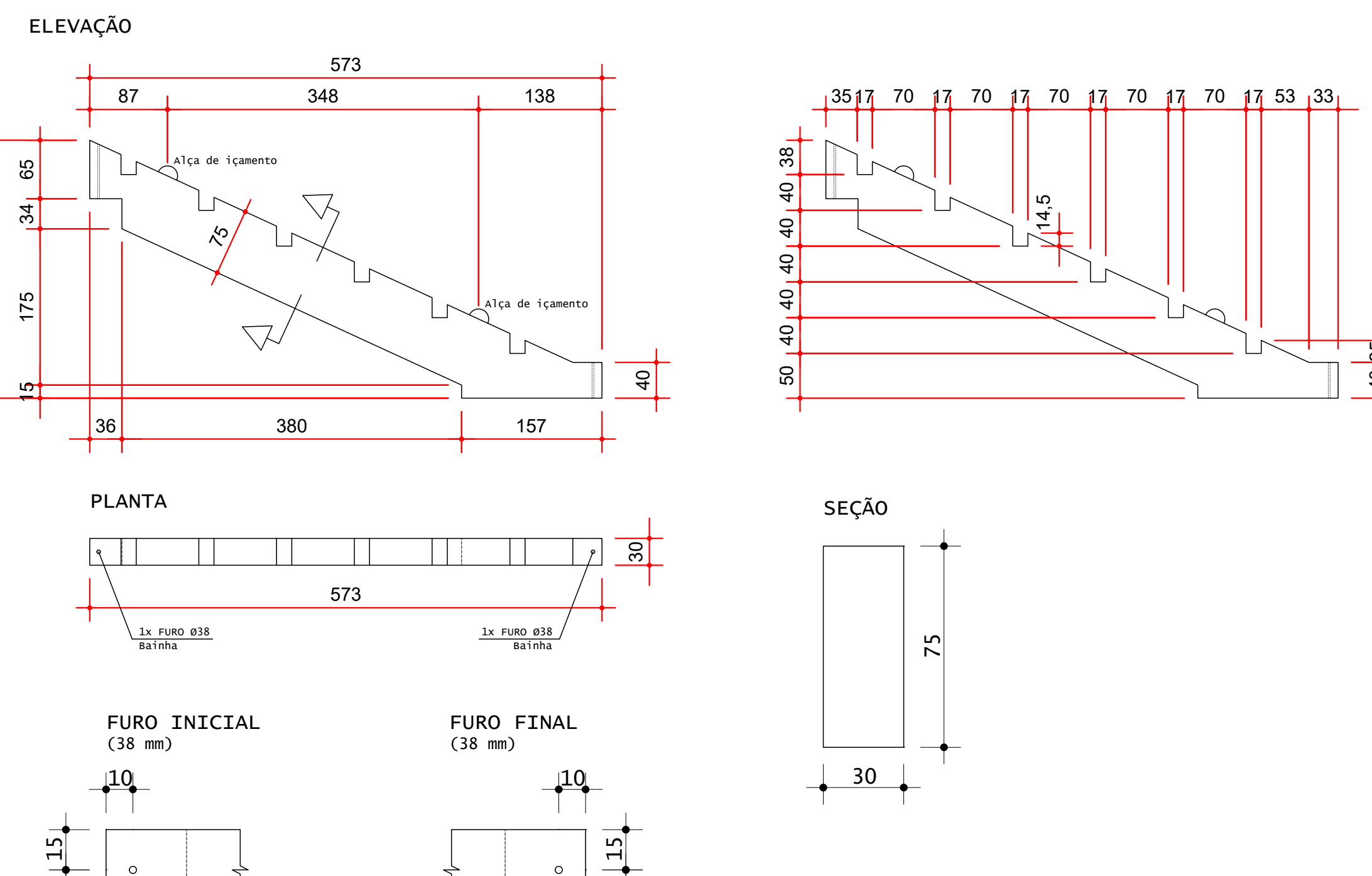
VJ01 (x12)



VJ02 (x20)



VJ03 (x18)



VJ01 (x12)

ARMADURA

ÁÇO	POS	BIT (mm)	QUANT	COMP. (cm)	UNIT (cm)	TOTAL (cm)
50A	1	25,0	5	441	2205	
50A	2	10,0	5	130	650	
50A	3	10,0	4	440	1760	
50A	4	8,0	4	114	456	
50A	5	8,0	15	60	900	
50A	6	8,0	8	120	480	
50A	7	8,0	4	150	600	
50A	8	8,0	4	98	392	
50A	9	8,0	4	151	604	
50A	10	10,0	4	409	1636	
50A	11	8,0	12	216	2592	
50A	12	8,0	8	180	1440	
50A	13	8,0	4	168	672	
50A	14	8,0	11	180	2420	
50A	15	8,0	2	138	276	

ÁÇO	BIT (mm)	COMP. (m)	PESO (kg)
50A	8,0	115	46
50A	10,0	41	29
50A	25,0	23	89

Peso Total (1x) = 161 kg
Peso Total (12x) = 1932 kg

VJ02 (x20)

ARMADURA

ÁÇO	POS	BIT (mm)	QUANT	COMP. (cm)	UNIT (cm)	TOTAL (cm)
50A	1	25,0	5	466	2330	
50A	2	8,0	3	154	462	
50A	3	10,0	4	481	1904	
50A	4	8,0	15	60	900	
50A	5	8,0	4	93	372	
50A	6	8,0	16	150	2400	
50A	7	8,0	4	110	440	
50A	8	8,0	4	410	1640	
50A	9	10,0	4	410	1640	
50A	10	8,0	24	212	5088	
50A	11	8,0	8	180	1440	
50A	12	8,0	7	180	1309	
50A	13	8,0	4	120	480	

ÁÇO	BIT (mm)	COMP. (m)	PESO (kg)
50A	8,0	129	52
50A	10,0	36	23
50A	25,0	24	94

Peso Total (1x) = 169 kg
Peso Total (20x) = 3380 kg

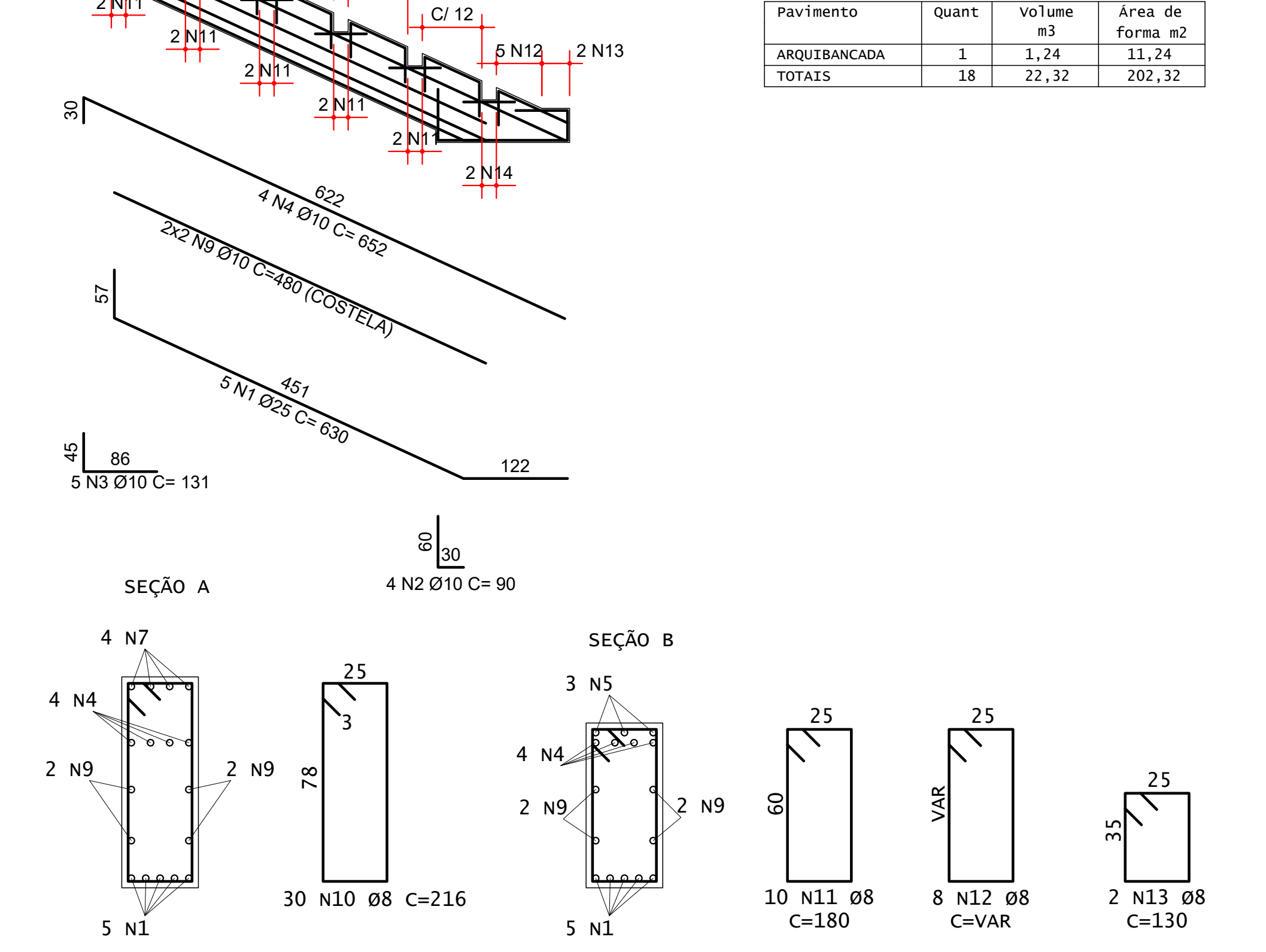
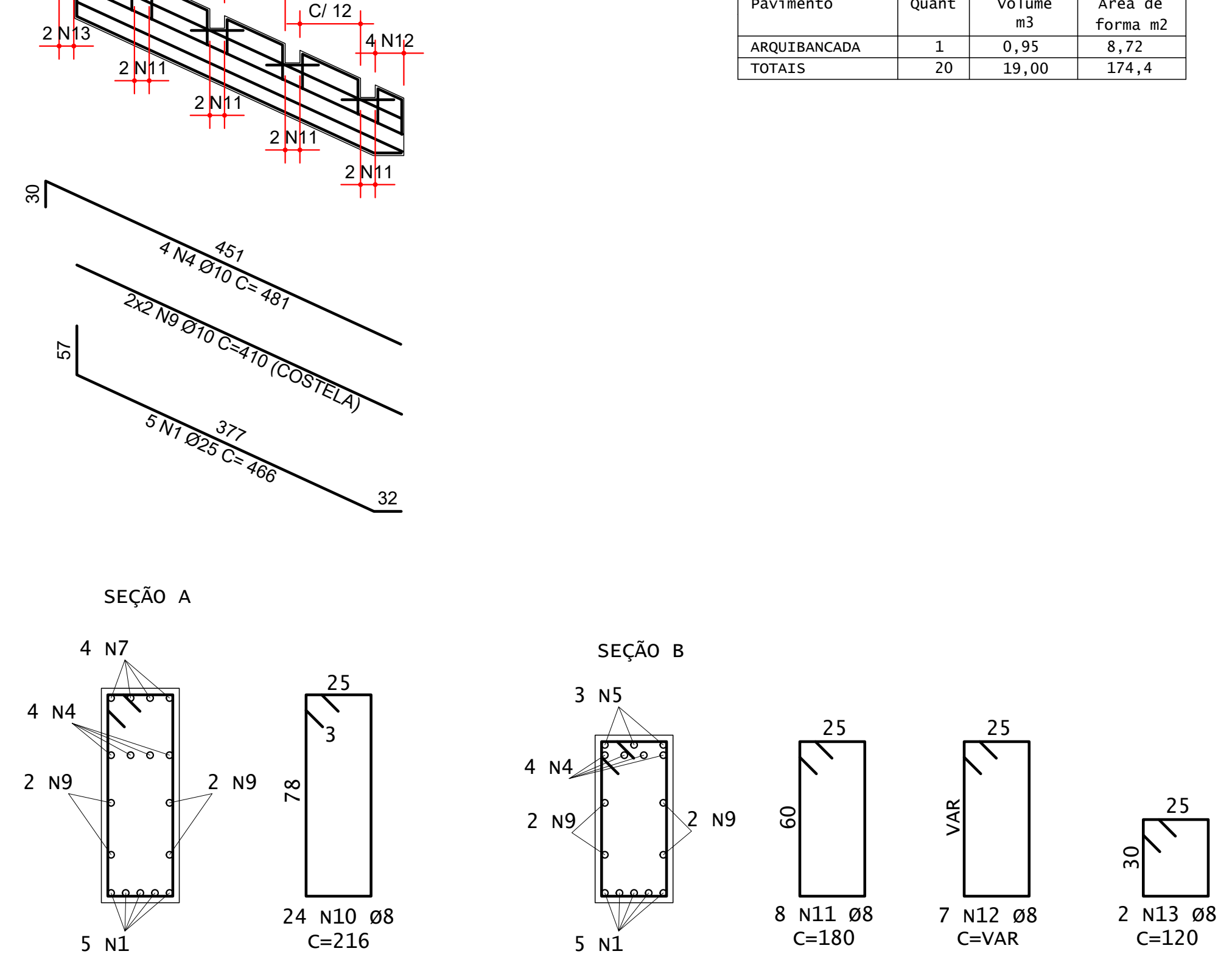
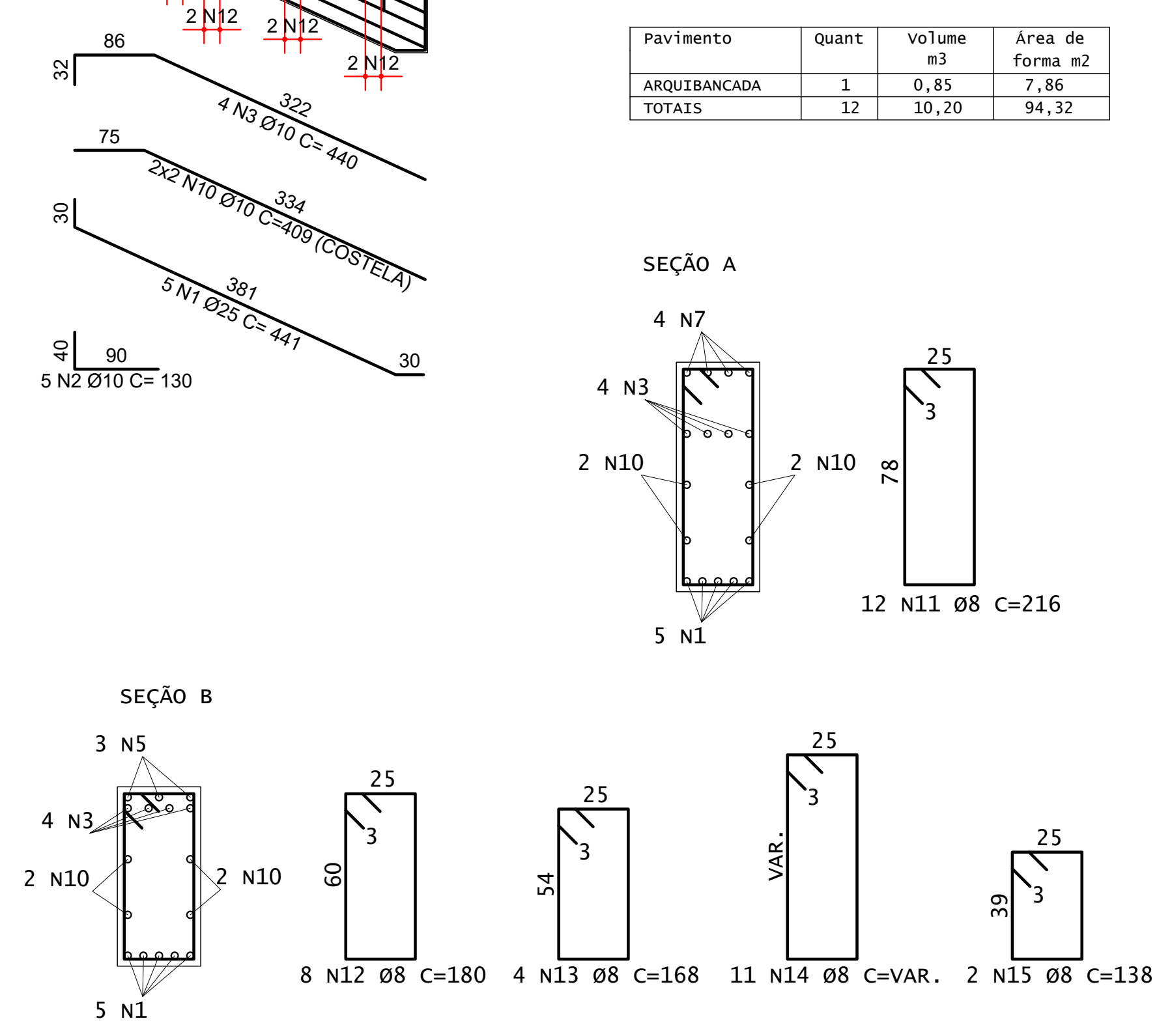
VJ03 (x18)

ARMADURA

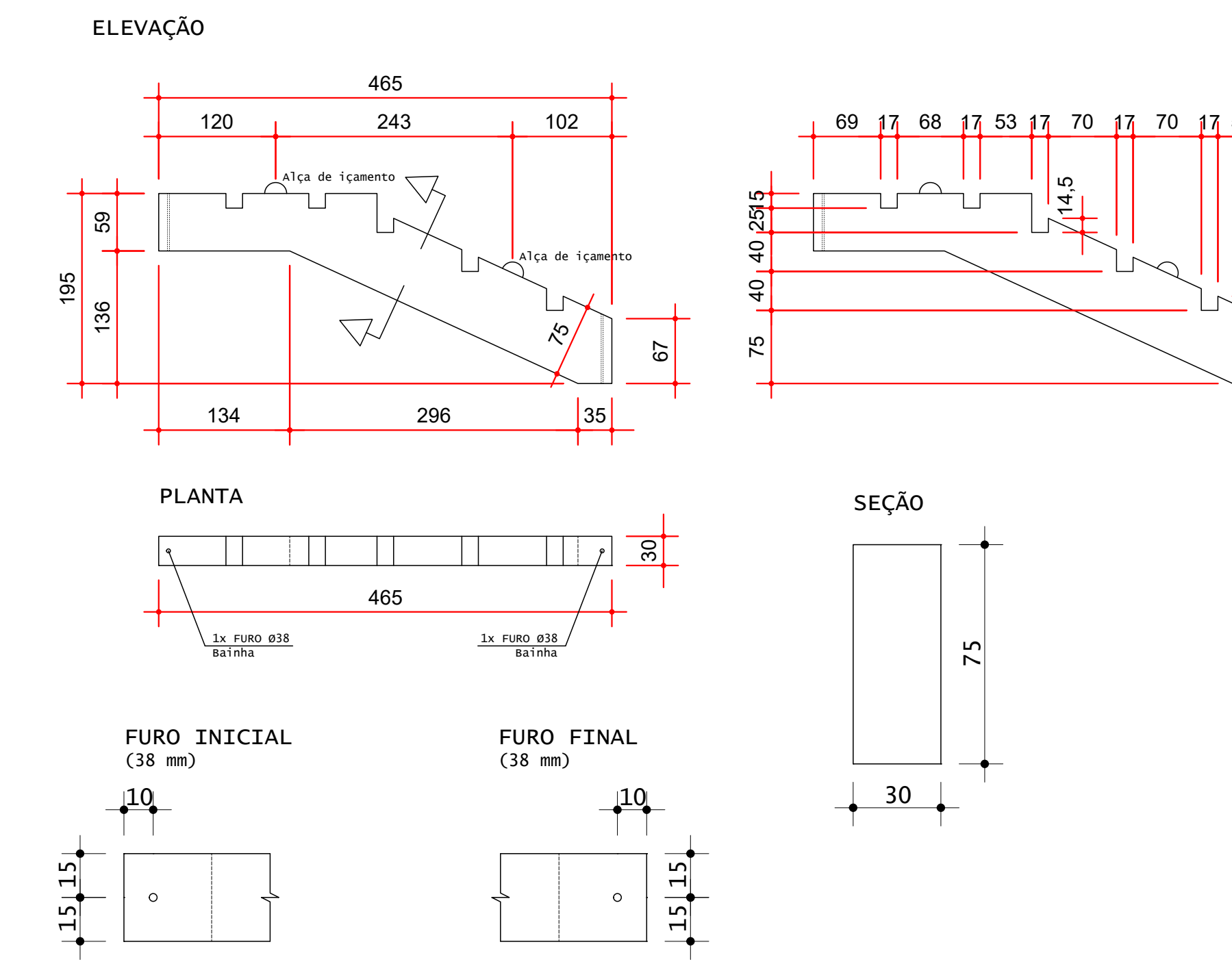
ÁÇO	POS	BIT (mm)	QUANT	COMP. (cm)	UNIT (cm)	TOTAL (cm)
50A	1	25,0	5	630	3150	
50A	2	10,0	8	90	720	
50A	3	10,0	5	131	655	
50A	4	10,0	4	652	2608	
50A	5	8,0	18	60	1080	
50A	6	8,0	4	113	452	
50A	7	8,0	20	150	3000	
50A	8	8,0	4	129	516	
50A	9	10,0	4	480	1920	
50A	10	8,0	30	216	6480	
50A	11	8,0	10	180	1800	
50A	12	8,0	8	180	1440	
50A	13	8,0	2	130	260	
50A	14	8,0	2	150	300	

ÁÇO	BIT (mm)	COMP. (m)	PESO (kg)
50A	8,0	152	61
50A	10,0	60	38
50A	25,0	32	126

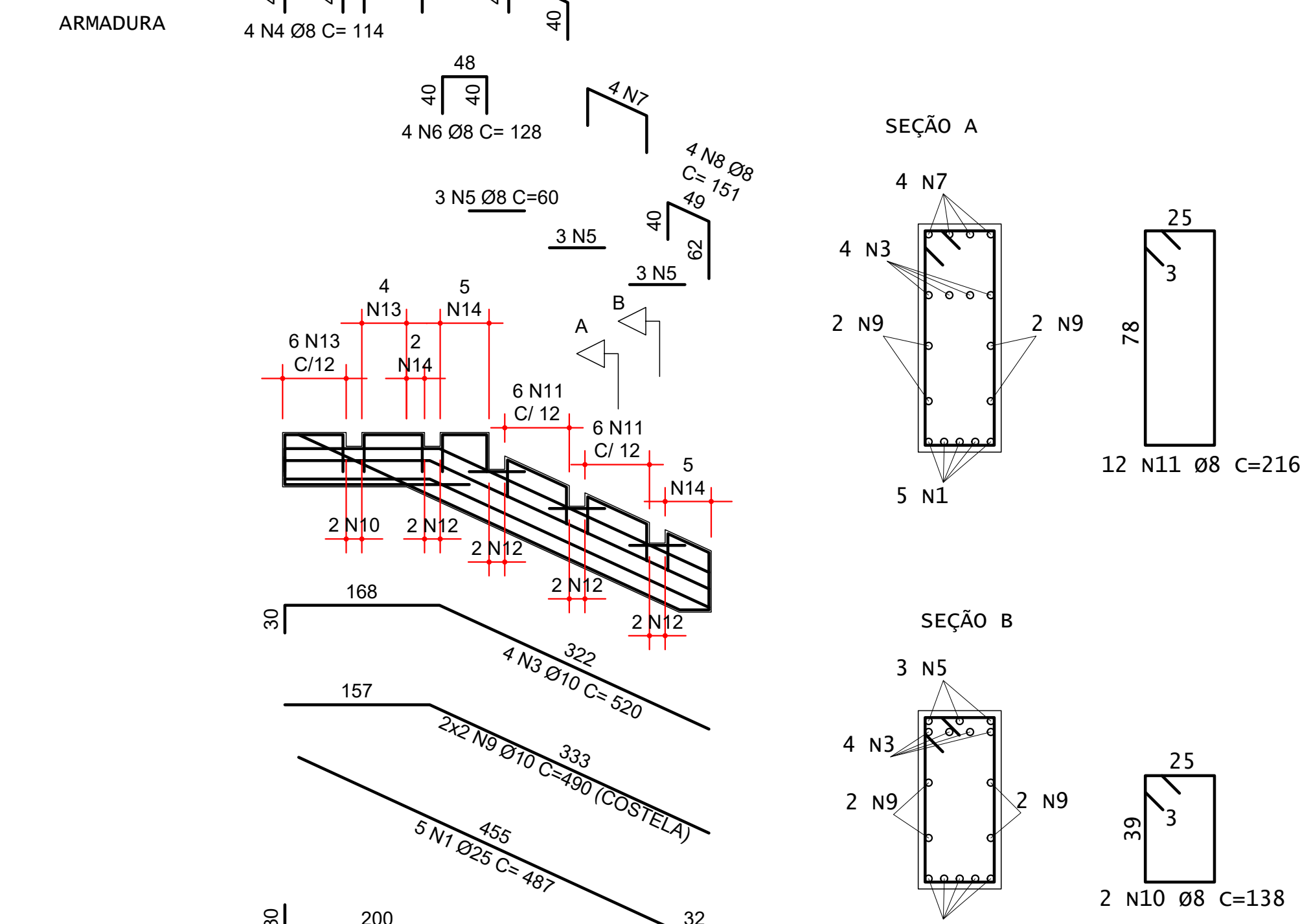
Peso Total (1x) = 225 kg
Peso Total (18x) = 4050 kg



VJ04 (x8)



VJ04 (x8)



ARMADURA

ÁÇO	POS	BIT (mm)	QUANT	COMP. (cm)	UNIT (cm)	TOTAL (cm)
50A	1	25,0	5	487	2435	
50A	2	25,0	5	230	1150	
50A	3	10,0	4	520	2080	
50A	4	8,0	8	114	912	
50A	5	8,0	9	60	540	
50A	6	8,0	4	128	512	
50A	7	8,0	8	150	1200	
50A	8	8,0	4	151	604	
50A	9	10,0	4	490	1960	
50A	10	8,0	2	138	276	
50A	11	8,0	12	216	2592	
50A	12	8,0	8	180	1440	
50A	13	8,0	10	168	1680	
50A	14	8,0	10	180	2240	

ÁÇO	BIT (mm)	COMP. (m)	PESO (kg)
50A	8,0	120	48
50A	10,0	41	26
50A	25,0	36	144

Peso Total (1x) = 218 kg
Peso Total (8x) = 1744 kg

- NOTAS DE PROJETO:
- DIMENSÕES EM CM, EXCETO ONDE INDICADO.
 - O CONCRETO UTILIZADO DEVERÁ SER DA CLASSE C30 CONFORME DISCRIMINADO NA NBR 6118 (ABNT, 2014).
 - A MOVIMENTAÇÃO DAS LAJES DE ARQUIBANCADA SOMENTE PODE SER REALIZADA QUANDO O CONCRETO ATINGIR RESISTÊNCIA À COMPRESSÃO (f_{cd}) DE 21 MPa.
 - A ESTABILIDADE DAS ARQUIBANCADAS E DA ESTRUTURA, DURANTE O PROCESSO CONSTRUTIVO, DEVERÁ SER AVALIADA PELO CONSTRUTOR.

REV	DESCRIÇÃO	DESENHO	APROV.	DATA	
2	TABELA DE VOLUME E ÁREA DE FORMA		PJC	PJC	25/03/2022
1	REVISÃO GERAL		PJC	PJC	20/09/2019
0	INICIAL		PJC	PJC	23/08/2019

Projeto estrutural

PROJECALC
ENGENHARIA

ENGRº CIVIL WELINGTON RENANN TAVARES
CREA-PR 105269/D
contato: wltavares@projecalc.com.br

ENGRº CIVIL MATEUS GALDINO DA SILVA
CREA-PR 134229/D
contato: matheus@projecalc.com.br

CURITIBA - PR (41) 3013-4787

Obra

GINÁSIO DE ESPORTES PATO BRANCO

PROJETO EXECUTIVO

FORMAS E ARMADURAS - VIGAS JACARÉ

VJ01, VJ02, VJ03 E VJ04

Proprietário
PREFEITURA MUNICIPAL DE PATO BRANCO

Endereço
RUA BENJAMIN BORGES, BAIRRO FRARON, PATO BRANCO - PR

Escala
INDICADA

Data
09/2019

NÚMERO
D-032-CJ-001