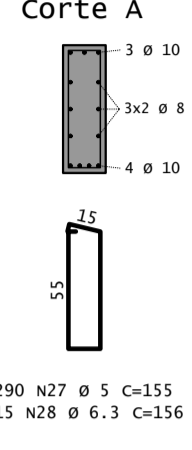
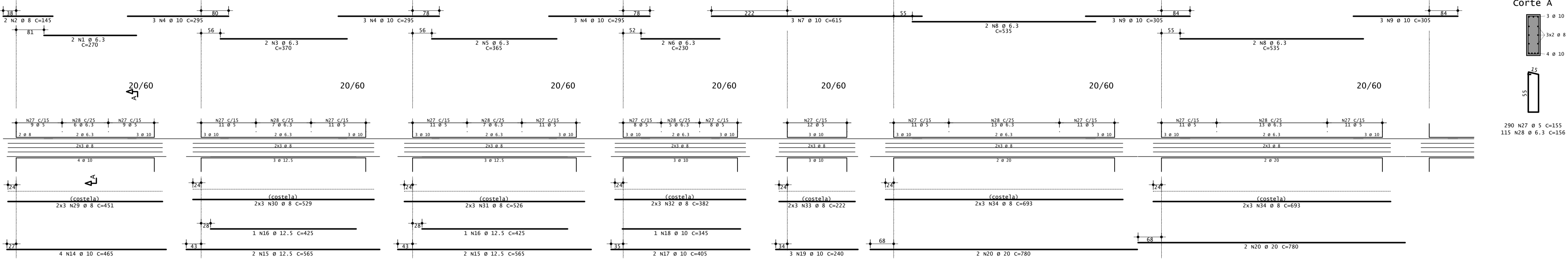


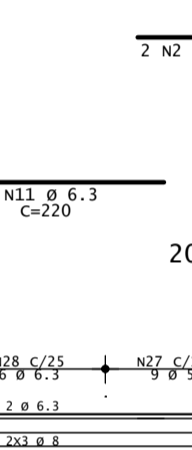
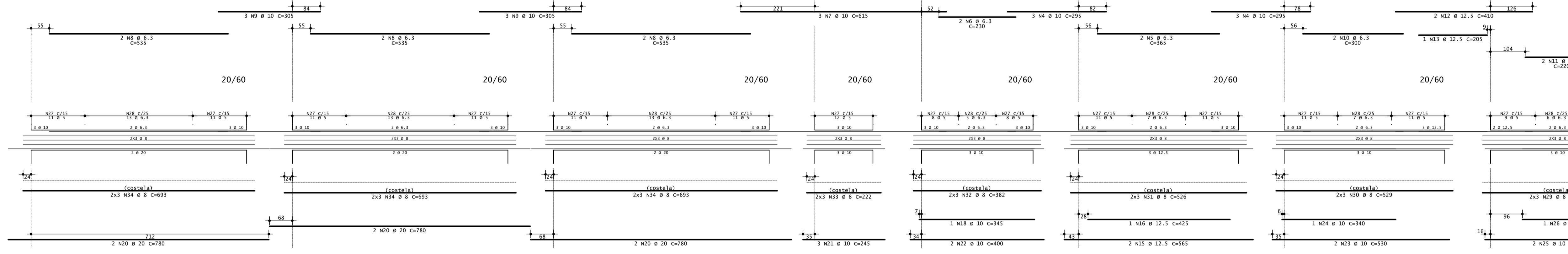
v9

Volume m3	Área de forma m2
9.61	124.6



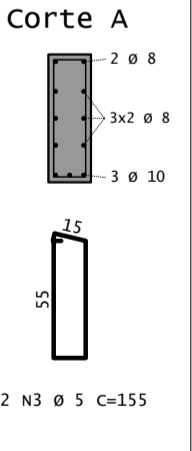
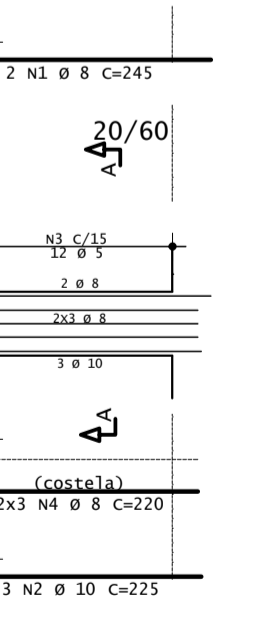
AÇO	POS	BIT (mm)	QUANT	COMPRIMENTO	
				UNIT (cm)	TOTAL (cm)
S0A	1	6.3	2	270	540
S0A	2	8	4	245	980
S0A	3	6.3	2	370	740
S0A	4	6.3	2	295	590
S0A	5	6.3	4	365	1460
S0A	6	6.3	4	230	920
S0A	7	10	6	615	3690
S0A	8	6.3	10	535	3190
S0A	9	10	12	305	3660
S0A	10	6.3	2	300	600
S0A	11	6.3	2	220	440
S0A	12	12.5	2	410	820
S0A	13	10	4	205	820
S0A	14	12.5	4	465	1860
S0A	15	12.5	6	285	3390
S0A	16	12.5	3	425	1275
S0A	17	10	2	405	810
S0A	18	10	3	385	600
S0A	19	10	3	240	720
S0A	20	10	10	780	7800
S0A	21	10	3	245	735
S0A	22	10	2	400	800
S0A	23	10	2	530	1060
S0A	24	10	2	340	680
S0A	25	10	2	240	480
S0A	26	10	2	445	890
S0A	27	5	290	185	44950
S0A	28	6.3	115	156	17940
S0A	29	6.3	115	156	17940
S0A	30	8	12	529	6348
S0A	31	8	12	526	6312
S0A	32	8	12	382	4584
S0A	33	8	12	222	2664
S0A	34	8	12	693	20790

RESUMO DE AÇO			
AÇO	BIT (mm)	COMPR (m)	PESO (kg)
60A	5	564	87
S0A	6.3	317	78
S0A	8	602	238
60A	3	5	139
S0A	12.5	57	55
S0A	16	19	30
S0A	20	28	192
PESO TOTAL		60A =	87 kg
PESO TOTAL		S0A =	752 kg



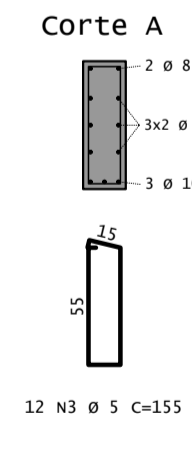
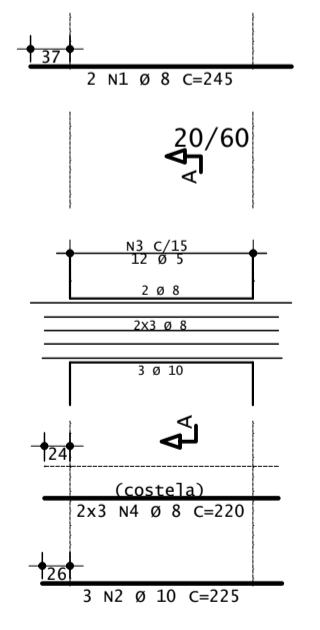
v10

Volume m3	Área de forma m2
0.19	2.52



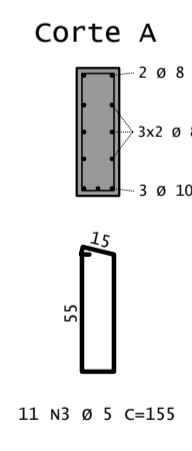
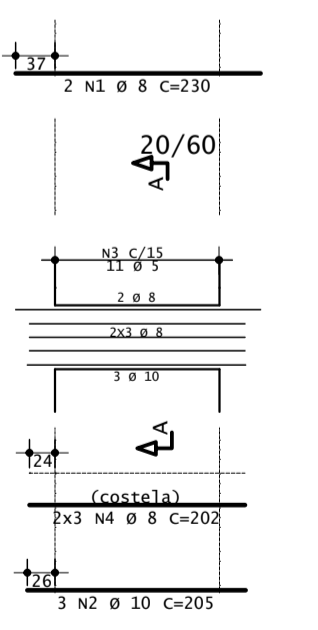
v11

Volume m3	Área de forma m2
0.19	2.52



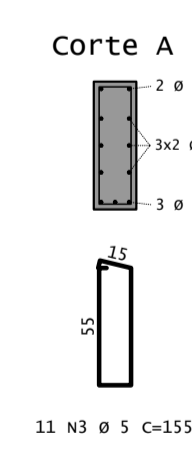
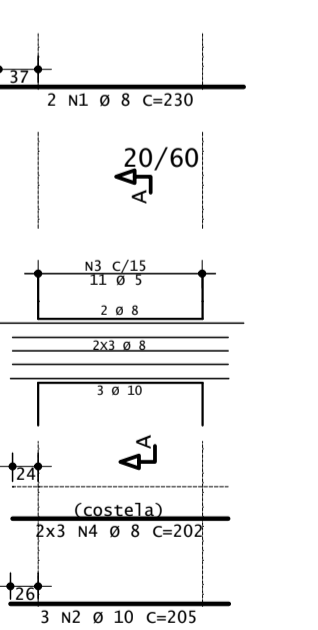
v12

Volume m3	Área de forma m2
0.18	2.324



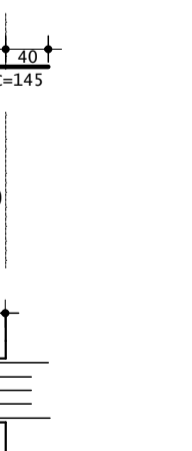
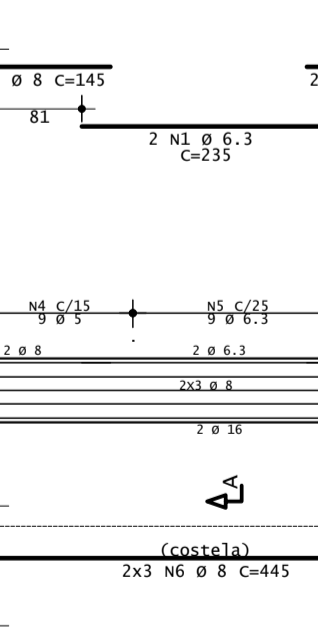
v13

Volume m3	Área de forma m2
0.18	2.324



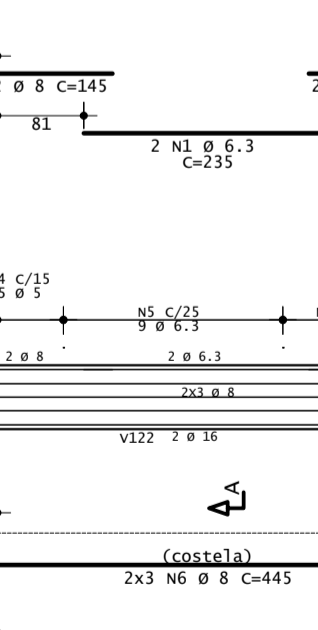
v14

Volume m3	Área de forma m2
0.43	5.6



v15

Volume m3	Área de forma m2
0.43	5.6



- NOTAS DE PROJETO:
- DIMENSÕES EM CM, EXCETO ONDE INDICADO.
 - O CONCRETO UTILIZADO DEVERÁ SER DA CLASSE C30 CONFORME DISCRIMINADO NA NBR 6118 (ABNT, 2014).
 - O CONTROLE DAS DIMENSÕES AQUI APRESENTADAS DEVERÁ SER RIGOROSO. QUALQUER DIVERGÊNCIA DO PROJETISTA DEVERÁ SER CONSULTADO.
 - ALTERAÇÕES DO PROJETO DEVERÃO SER VALIDADAS PELO PROJETISTA.
 - COBRIMENTO MÍNIMO DAS ARMADURAS: 2.5 cm.

REV	DESCRIÇÃO	DESENHO	APROV.	DATA
2	TABELA DE VOLUME E ÁREA DE FORMA	PJJC	PJJC	04/04/2022
1	TABELA DE VOLUME E ÁREA DE FORMA	PJJC	PJJC	25/03/2022
0	INICIAL	PJJC	PJJC	18/10/2019

Projeto estrutural

PROJECALC ENGENHARIA

ENGR CIVIL - WELINGTON RENANN TAVARES
CREA PR 140290
contato: wrtavares@projecalcalc.com.br

ENGR CIVIL - MATHIEUS GALDINO DA SILVA
CREA PR 142290
contato: mathieus@projecalcalc.com.br

CURITIBA - PR (41) 3013-4787

Obra

GINÁSIO DE ESPORTES PATO BRANCO

PROJETO EXECUTIVO

ARMADURAS DAS VIGAS BALDRAME - 02/10

Proprietário: PREFEITURA MUNICIPAL DE PATO BRANCO

Endereço: RUA BENJAMIN BORGES, BAIRRO FRARON, PATO BRANCO - PR

Escala: INDICADA

Data: 10/2019

NUMERO: D-032-CF-002