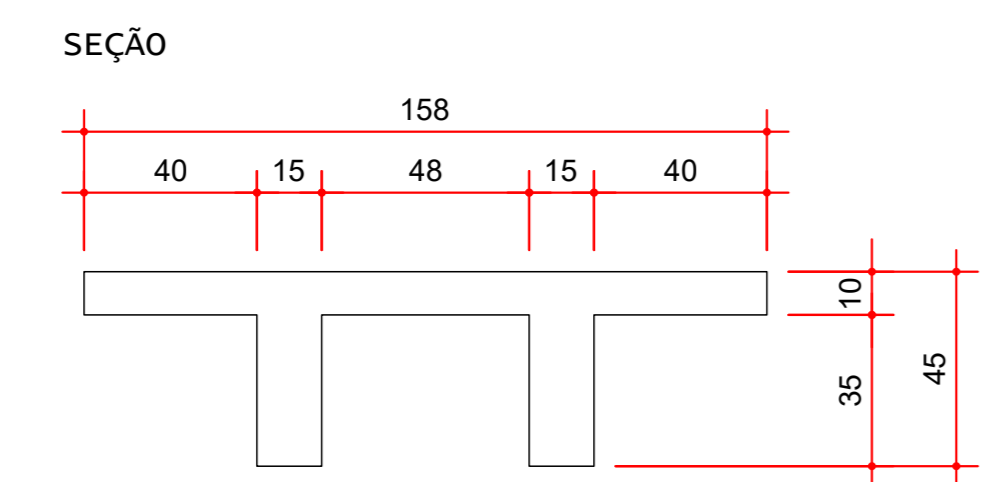
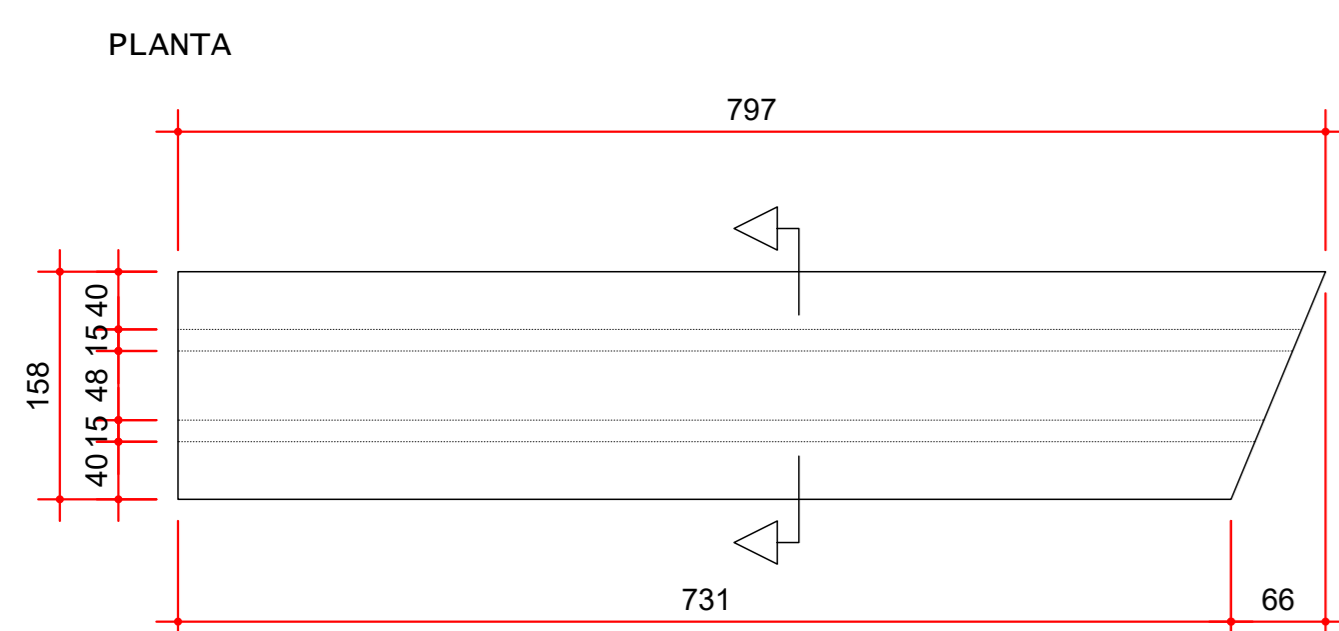


LA22 (x2)



ELEVAÇÃO

| Pavimento    | Quant | Volume m3 | Área de forma m2 |
|--------------|-------|-----------|------------------|
| ARQUIBANCADA | 1     | 2,10      | 25,87            |
| TOTAIS       | 2     | 4,20      | 51,74            |

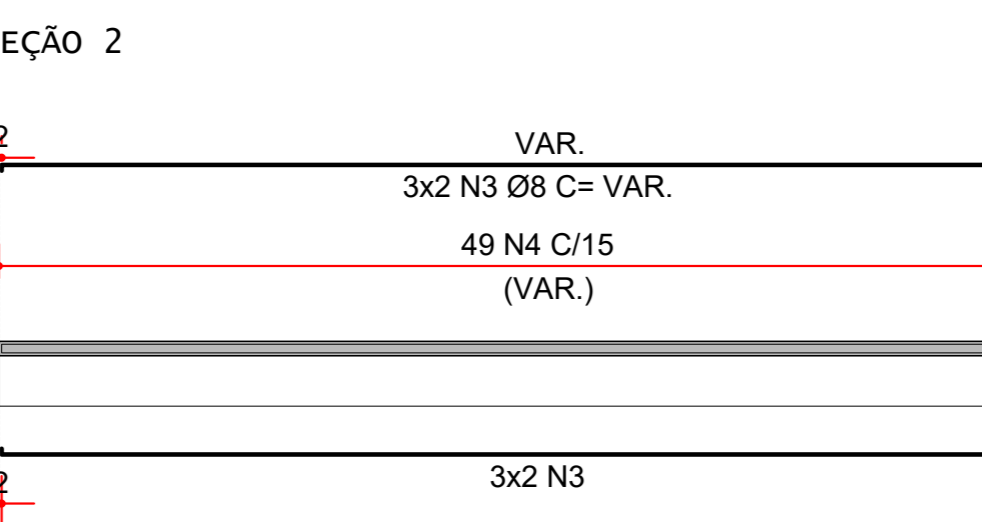
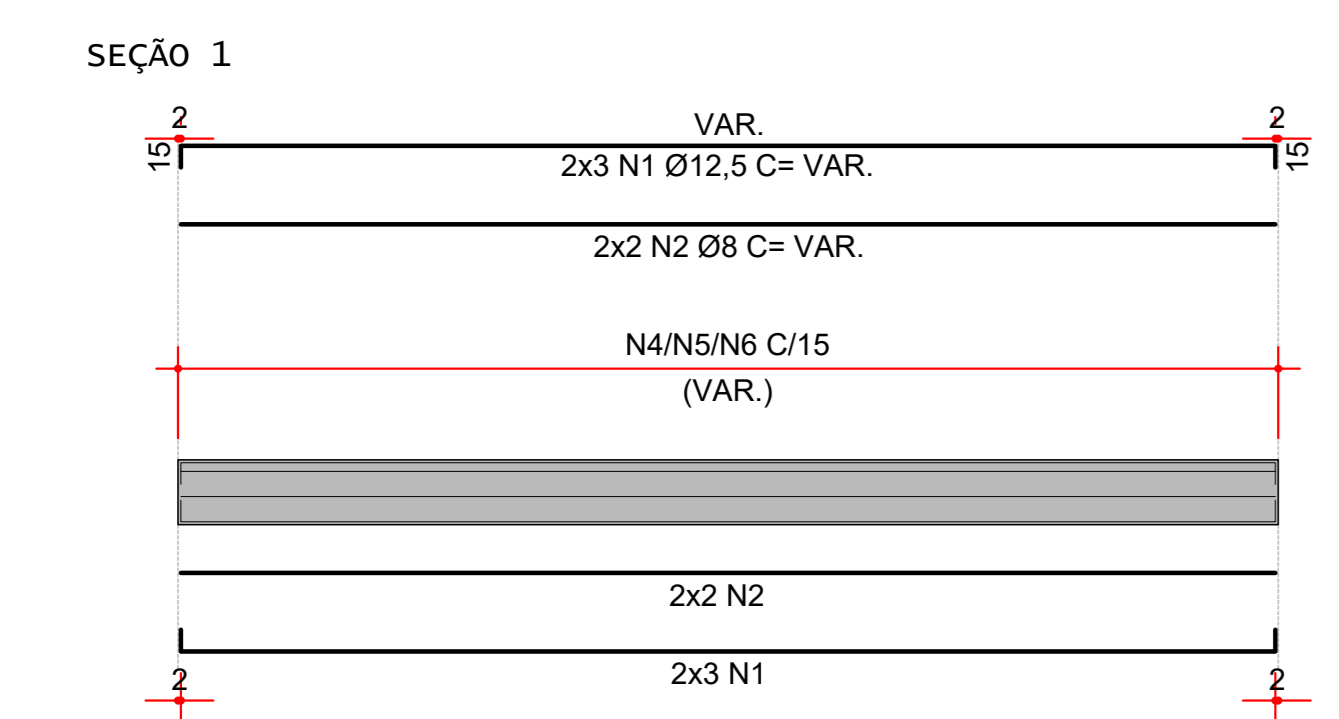
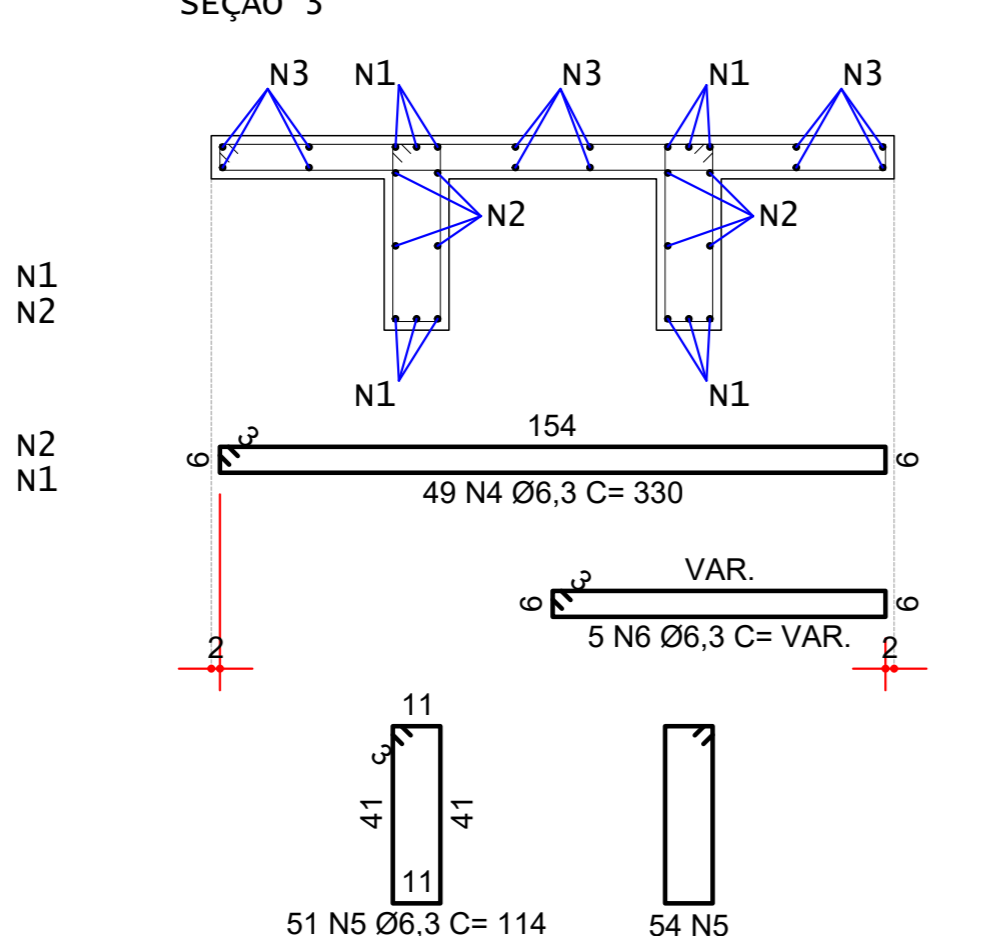
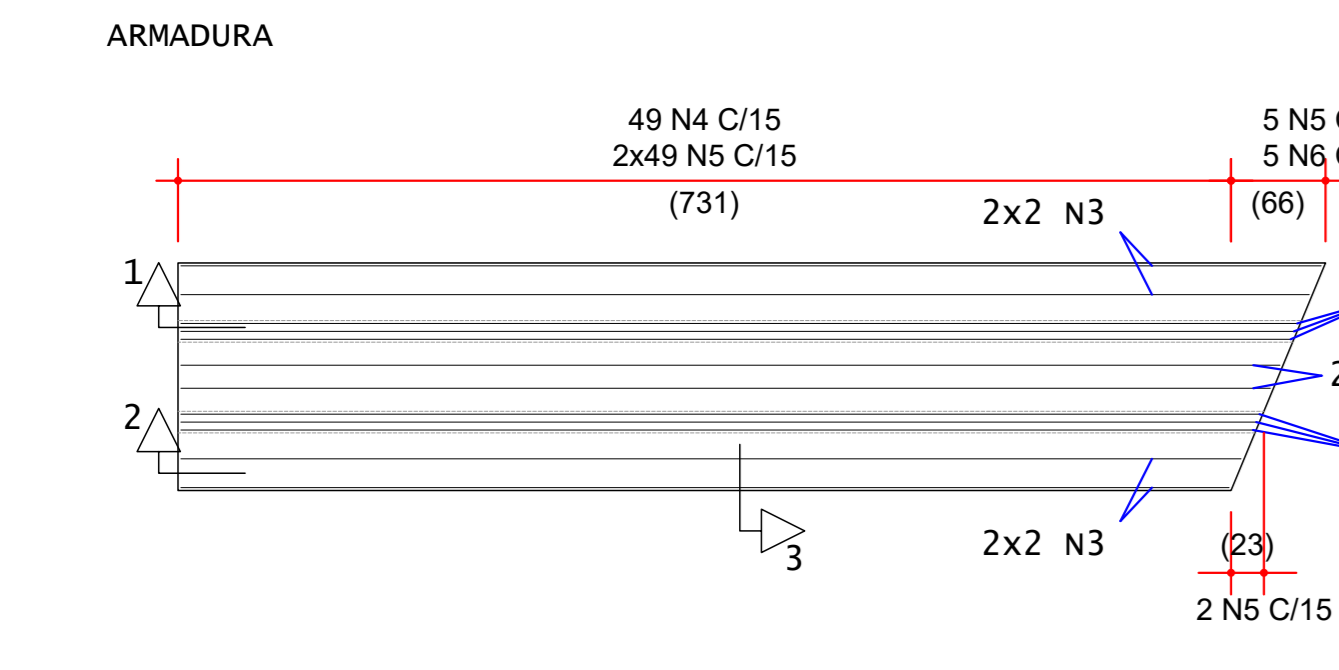
| LA22 | ÁÇO | POS | BIT (mm) | QUANT | COMPRIMENTO UNIT (cm) | TOTAL (cm) |
|------|-----|-----|----------|-------|-----------------------|------------|
|      | 50A | 1   | 12,5     | 12    | VAR.                  | 9468       |
|      | 50A | 2   | 8,0      | 8     | VAR.                  | 6072       |
|      | 50A | 3   | 8,0      | 12    | VAR.                  | 9204       |
|      | 50A | 4   | 6,3      | 49    | 330                   | 16170      |
|      | 50A | 5   | 6,3      | 105   | 114                   | 11970      |
|      | 50A | 6   | 6,3      | 5     | VAR.                  | 860        |

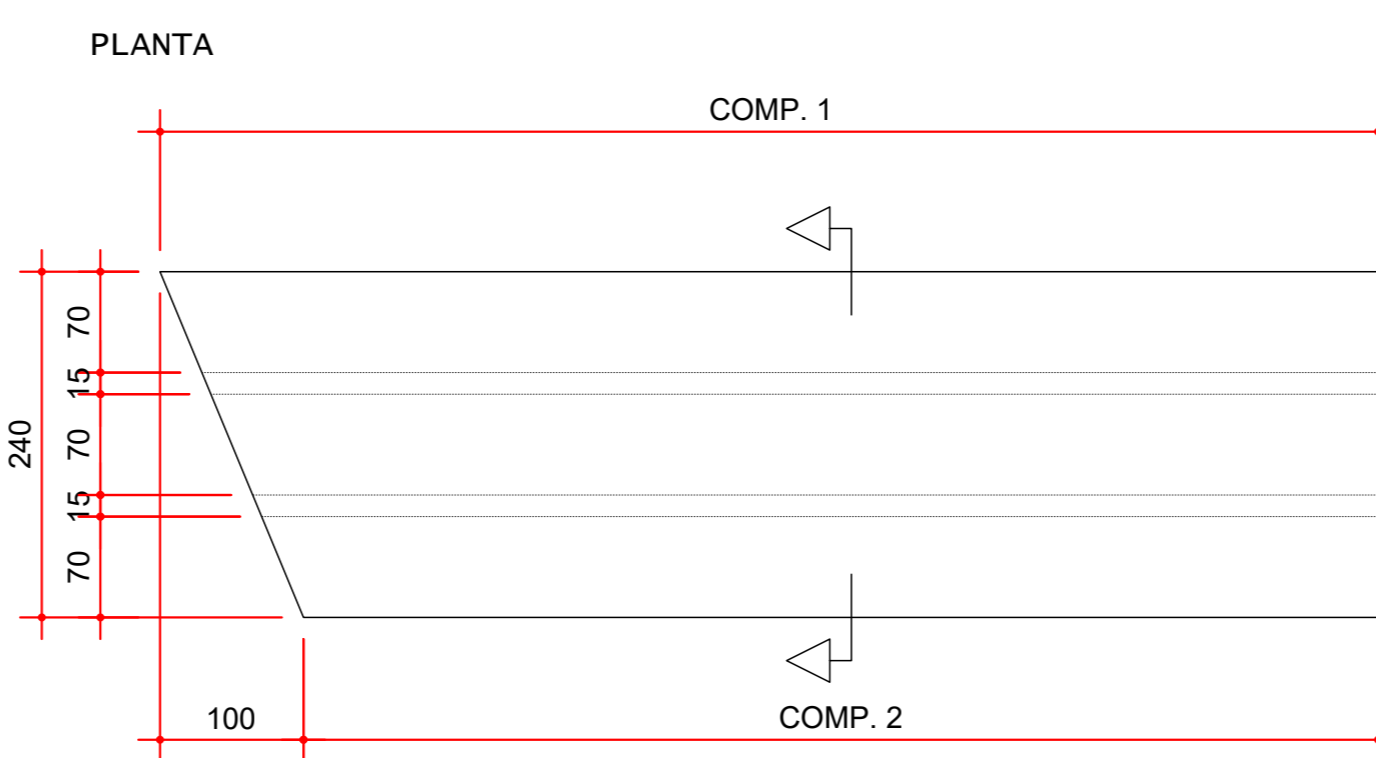
| RESUMO AÇO CA 50-60 | ÁÇO | BIT (mm) | COMP. (m) | PESO (kg) |
|---------------------|-----|----------|-----------|-----------|
|                     | 50A | 6,3      | 280       | 72        |
|                     | 50A | 8,0      | 150       | 62        |
|                     | 50A | 12,5     | 95        | 95        |

Peso Total (1x) = 229 kg

LA22 (x2)



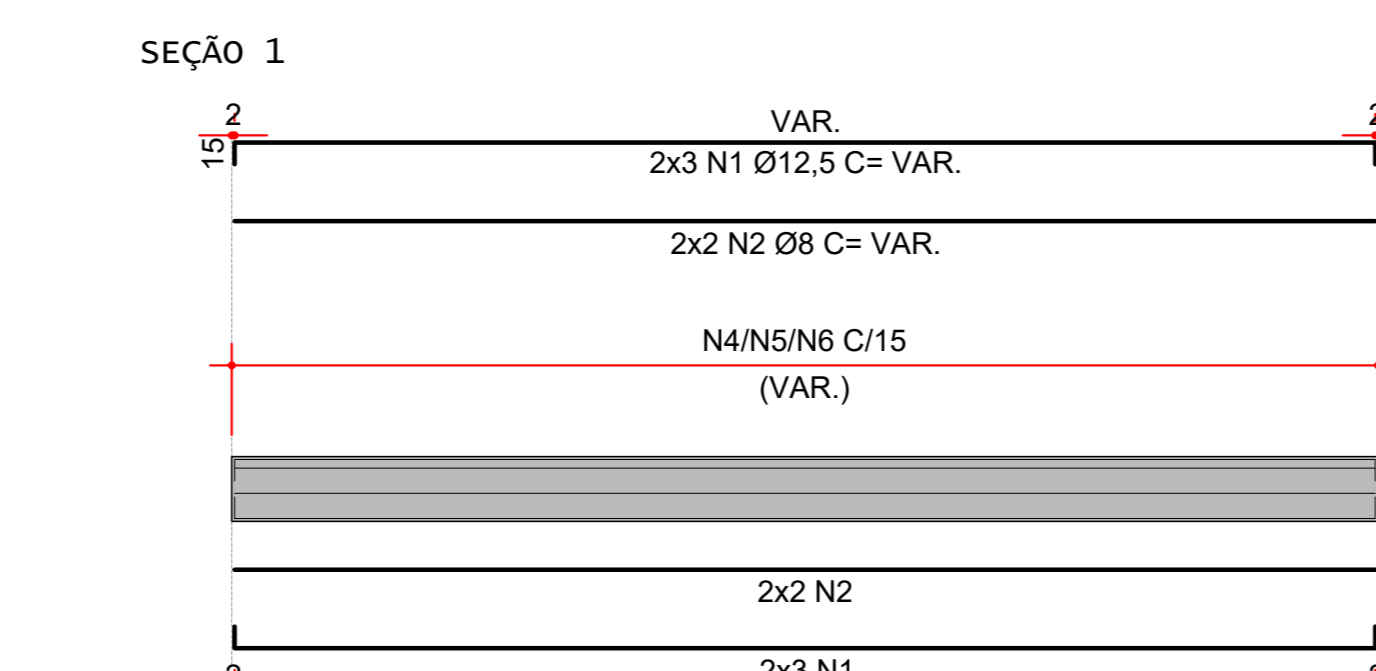
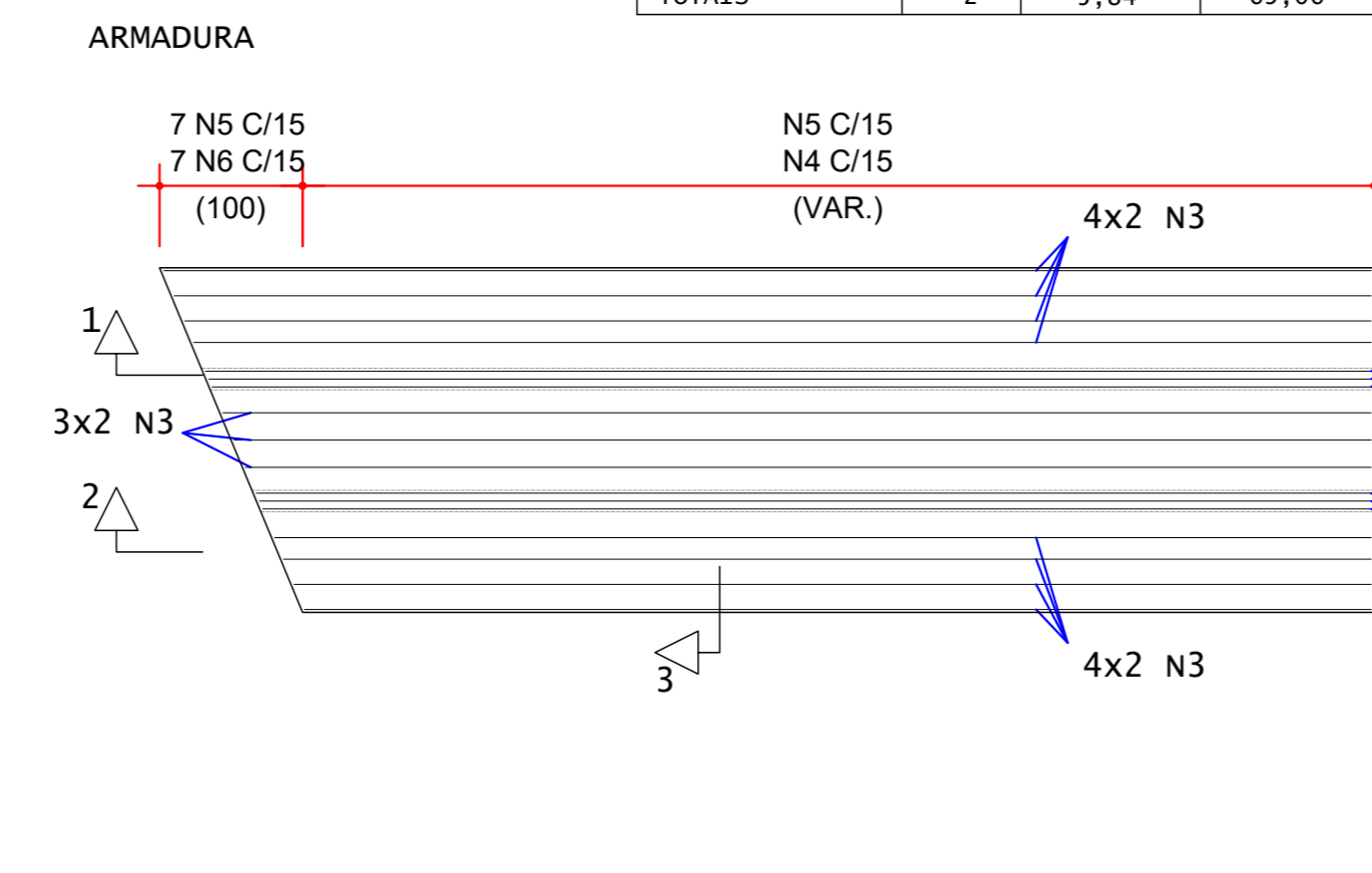
GRUPO 03 (x2)



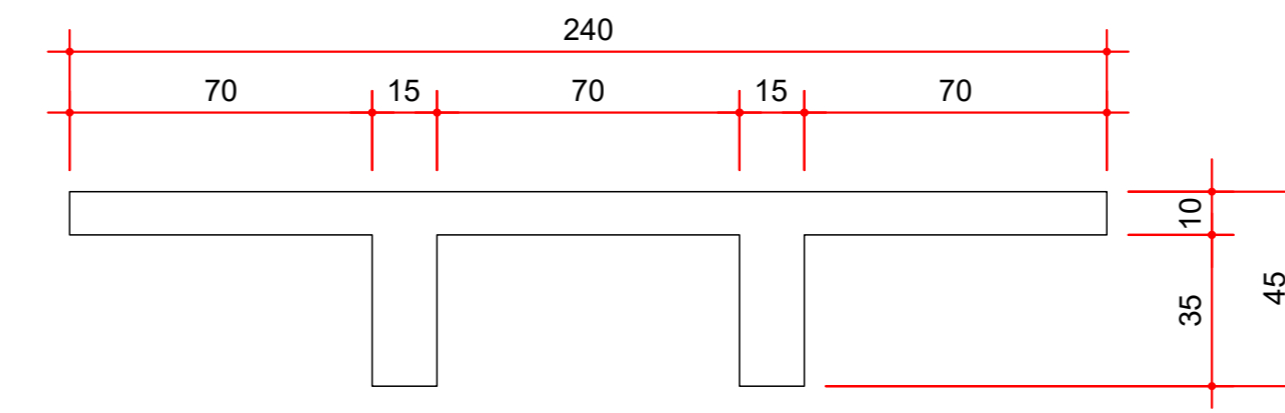
ELEVAÇÃO

| Pavimento    | Quant | Volume m3 | Área de forma m2 |
|--------------|-------|-----------|------------------|
| ARQUIBANCADA | 1     | 2,92      | 34,33            |
| TOTAIS       | 2     | 5,84      | 69,06            |

GRUPO 03 (x2)



SEÇÃO



| ELEMENTO | COMP. 1 | COMP. 2 | QTDE |
|----------|---------|---------|------|
| LA52     | 849     | 749     | 1    |
| LA67     | 843     | 743     | 1    |

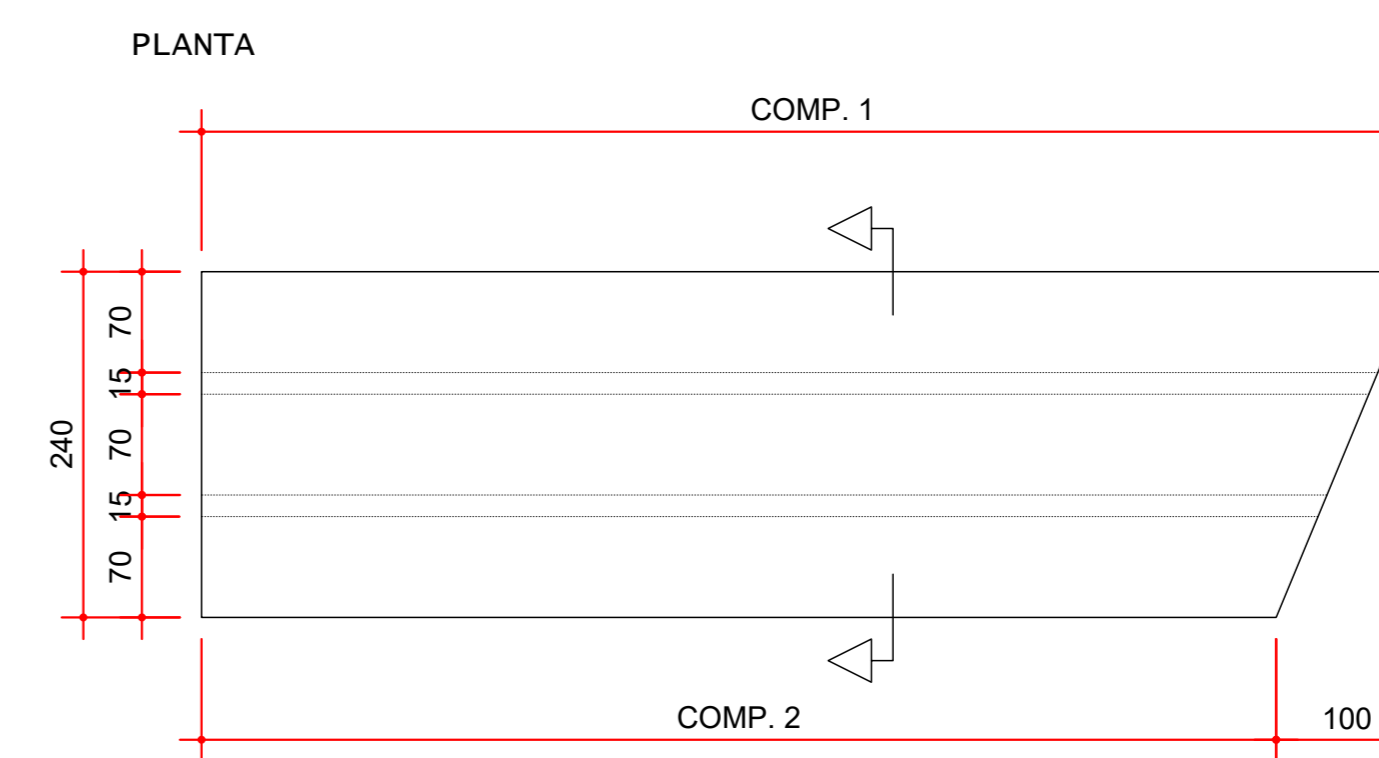
| GRUPO 03 | ÁÇO | POS | BIT (mm) | QUANT | COMPRIMENTO UNIT (cm) | TOTAL (cm) |
|----------|-----|-----|----------|-------|-----------------------|------------|
|          | 50A | 1   | 12,5     | 12    | VAR.                  | 8664       |
|          | 50A | 2   | 8,0      | 8     | VAR.                  | 6336       |
|          | 50A | 3   | 8,0      | 22    | VAR.                  | 17600      |
|          | 50A | 4   | 6,3      | 49    | 24700                 | 24700      |
|          | 50A | 5   | 6,3      | 114   | 9468                  | 9468       |
|          | 50A | 6   | 6,3      | 7     | VAR.                  | 1778       |

| RESUMO AÇO CA 50-60 | ÁÇO | BIT (mm) | COMP. (m) | PESO (kg) |
|---------------------|-----|----------|-----------|-----------|
|                     | 50A | 6,3      | 330       | 81        |
|                     | 50A | 8,0      | 240       | 96        |
|                     | 50A | 12,5     | 99        | 99        |

Peso Médio Total (1x) = 276 kg

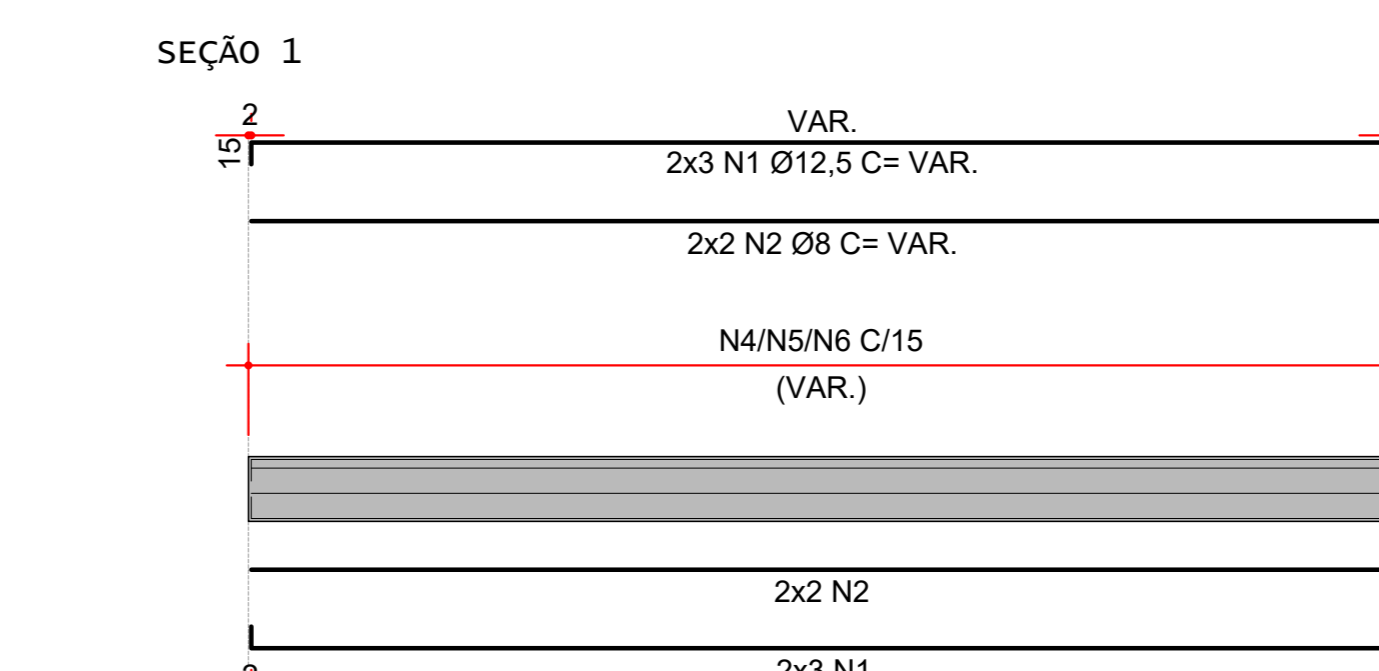
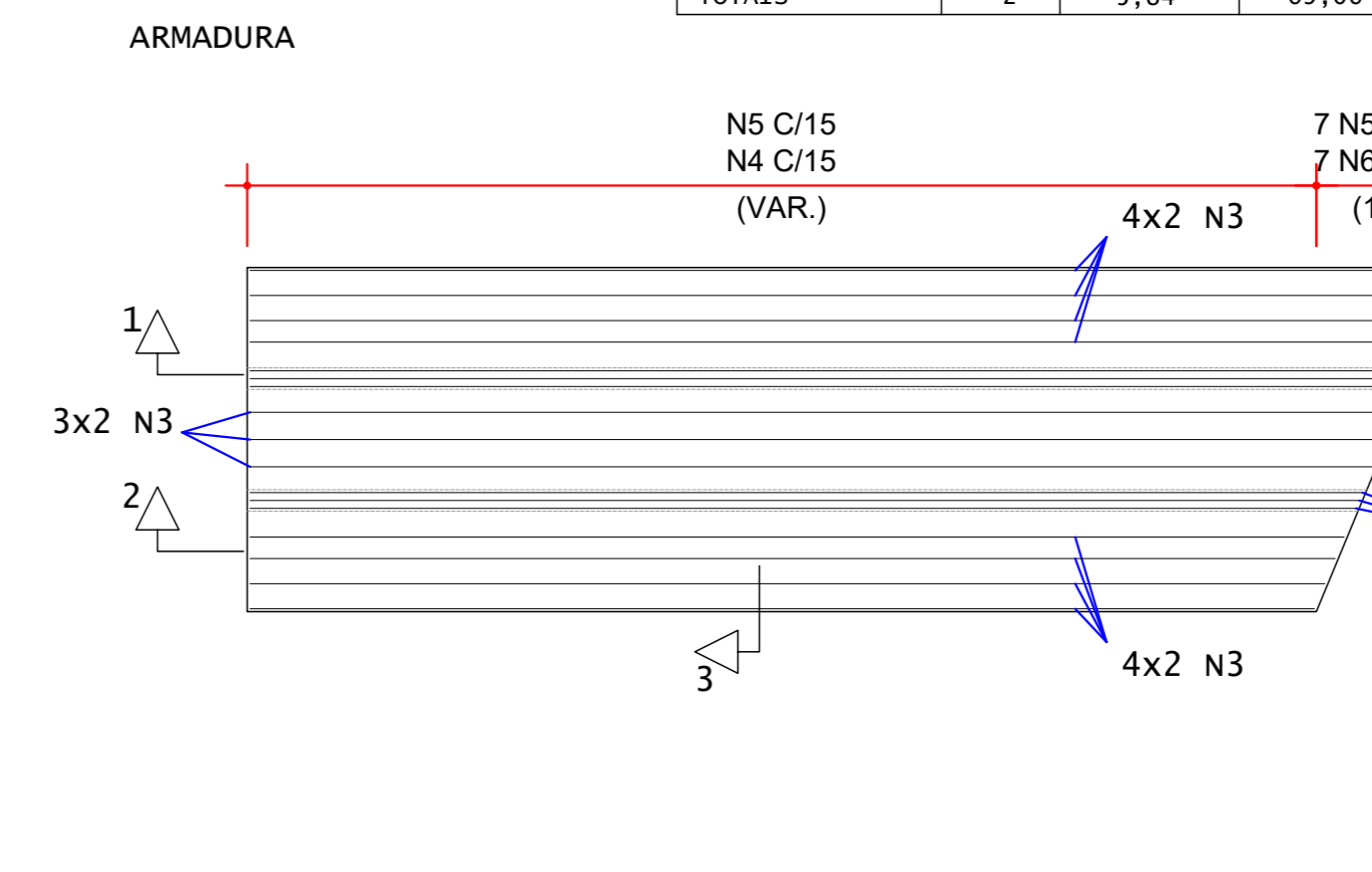
GRUPO 04 (x2)



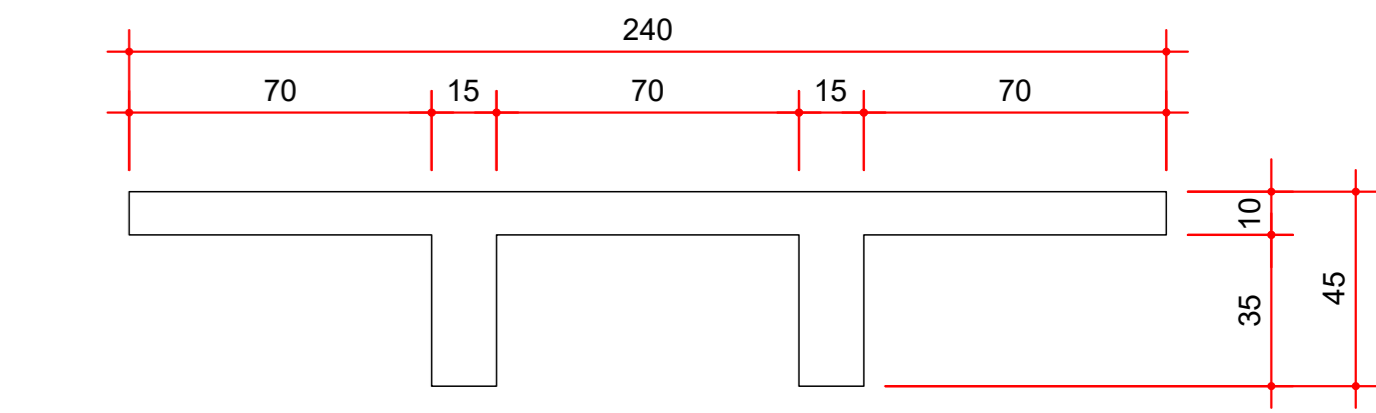
ELEVAÇÃO

| Pavimento    | Quant | Volume m3 | Área de forma m2 |
|--------------|-------|-----------|------------------|
| ARQUIBANCADA | 1     | 2,92      | 34,33            |
| TOTAIS       | 2     | 5,84      | 69,06            |

GRUPO 04 (x2)



SEÇÃO



| ELEMENTO | COMP. 1 | COMP. 2 | QTDE |
|----------|---------|---------|------|
| LA37     | 849     | 749     | 1    |
| LA82     | 843     | 743     | 1    |

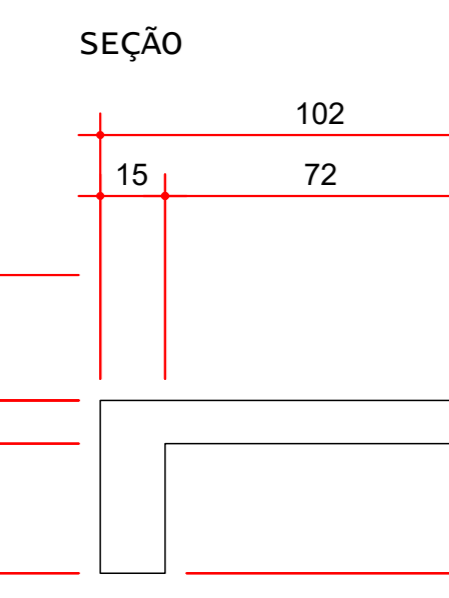
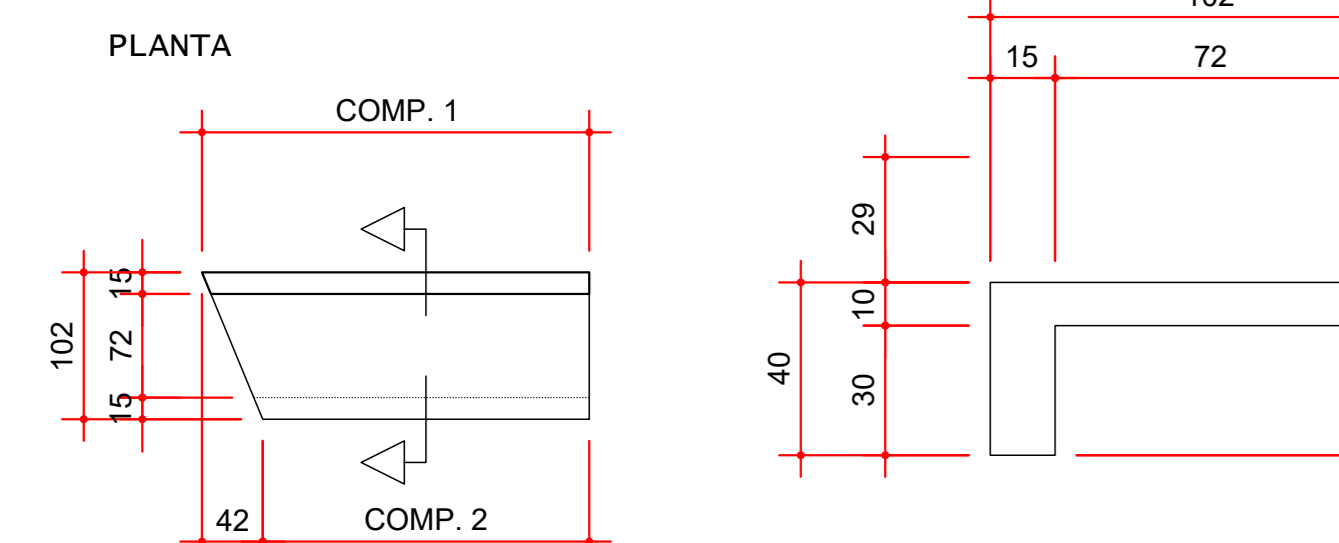
| GRUPO 04 | ÁÇO | POS | BIT (mm) | QUANT | COMPRIMENTO UNIT (cm) | TOTAL (cm) |
|----------|-----|-----|----------|-------|-----------------------|------------|
|          | 50A | 1   | 12,5     | 12    | VAR.                  | 8664       |
|          | 50A | 2   | 8,0      | 8     | VAR.                  | 6336       |
|          | 50A | 3   | 8,0      | 22    | VAR.                  | 17600      |
|          | 50A | 4   | 6,3      | 49    | 24700                 | 24700      |
|          | 50A | 5   | 6,3      | 114   | 9468                  | 9468       |
|          | 50A | 6   | 6,3      | 7     | VAR.                  | 1778       |

| RESUMO AÇO CA 50-60 | ÁÇO | BIT (mm) | COMP. (m) | PESO (kg) |
|---------------------|-----|----------|-----------|-----------|
|                     | 50A | 6,3      | 330       | 81        |
|                     | 50A | 8,0      | 240       | 96        |
|                     | 50A | 12,5     | 99        | 99        |

Peso Médio Total (1x) = 276 kg

GRUPO 05 (x2)



ELEVAÇÃO

| ELEMENTO | COMP. 1 | COMP. 2 | QTDE |
|----------|---------|---------|------|
| LA66     | 287     | 245     | 1    |
| LA81     | 281     | 239     | 1    |

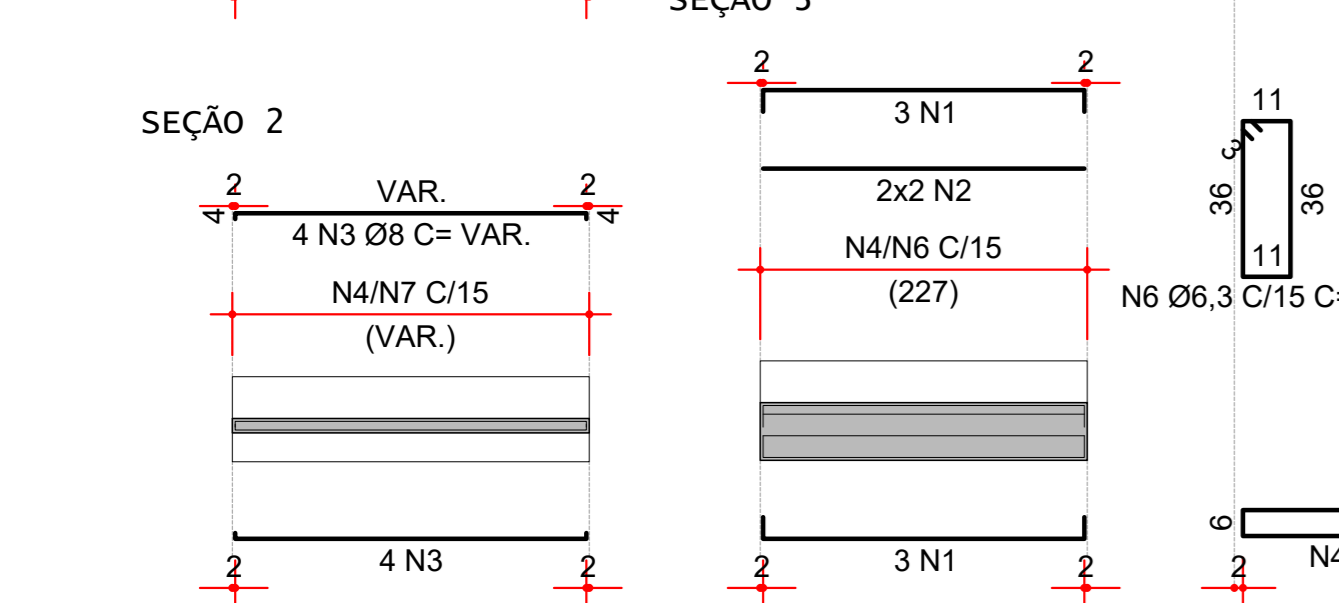
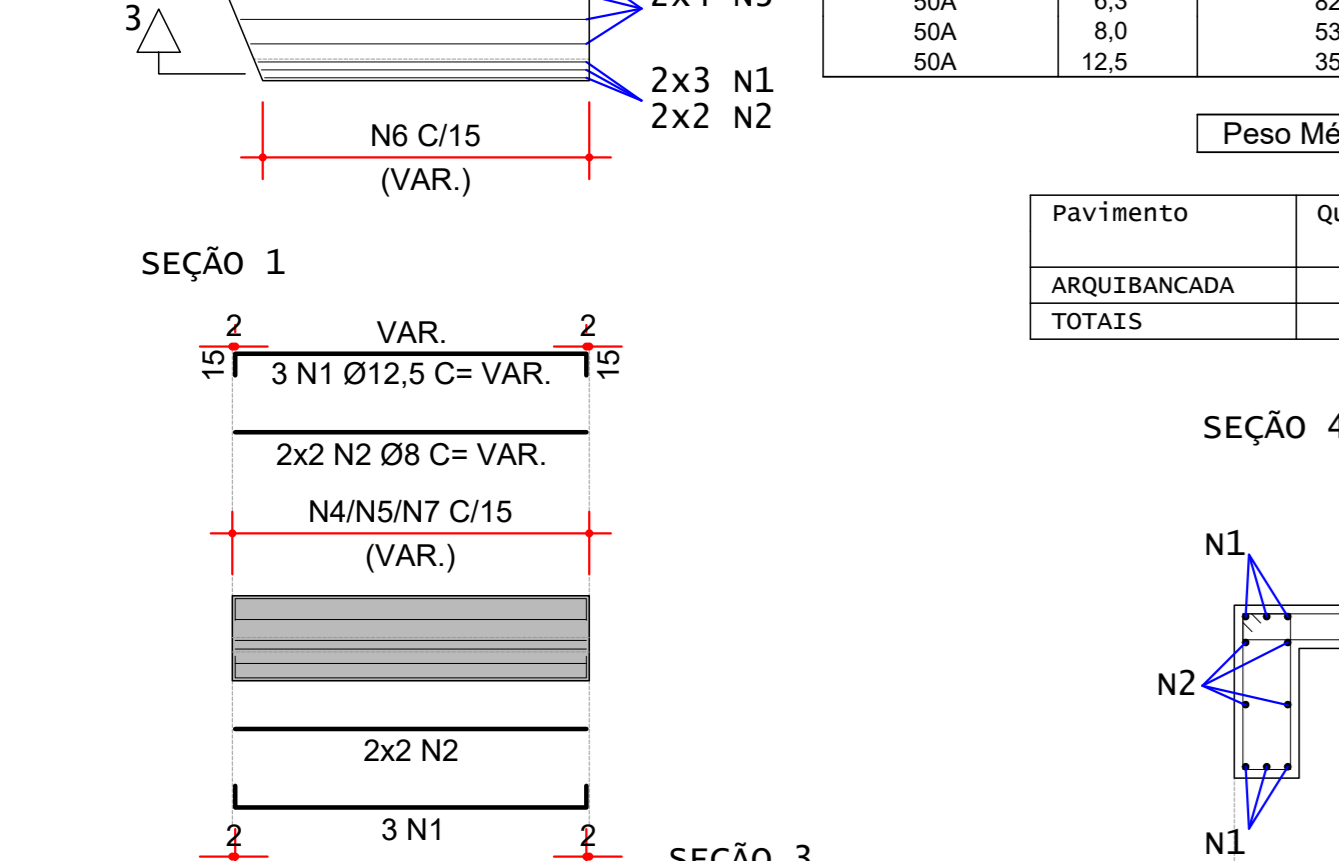
| GRUPO 05 | ÁÇO | POS | BIT (mm) | QUANT | COMPRIMENTO UNIT (cm) | TOTAL (cm) |
|----------|-----|-----|----------|-------|-----------------------|------------|
|          | 50A | 1   | 12,5     | 12    | VAR.                  | 3468       |
|          | 50A | 2   | 8,0      | 12    | VAR.                  | 3108       |
|          | 50A | 3   | 8,0      | 8     | VAR.                  | 2136       |
|          | 50A | 4   | 6,3      | 218   | 3488                  | 3488       |
|          | 50A | 5   | 6,3      | 142   | 2688                  | 2688       |
|          | 50A | 6   | 6,3      | 104   | 1664                  | 1664       |
|          | 50A | 7   | 6,3      | 3     | VAR.                  | 342        |

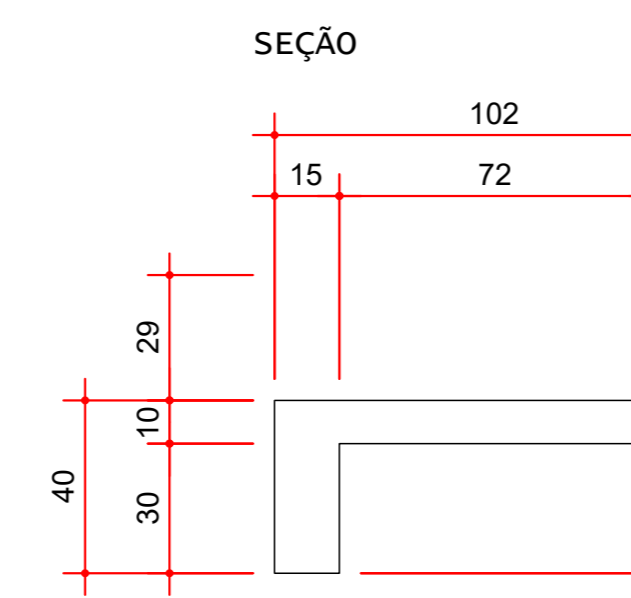
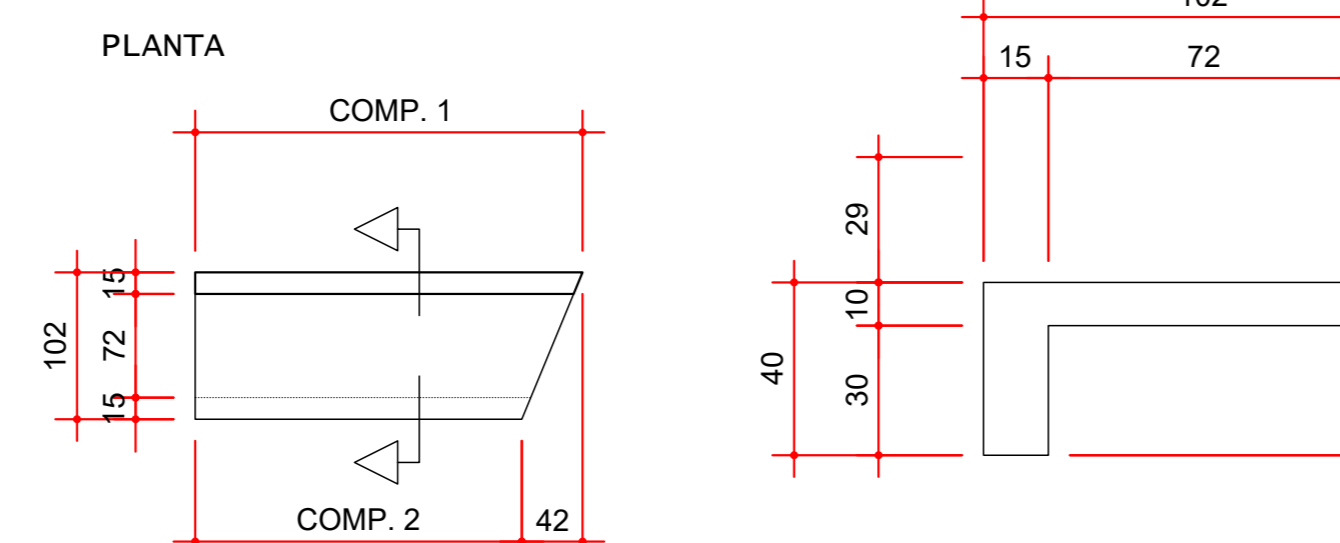
| RESUMO AÇO CA 50-60 | ÁÇO | BIT (mm) | COMP. (m) | PESO (kg) |
|---------------------|-----|----------|-----------|-----------|
|                     | 50A | 6,3      | 82        | 21        |
|                     | 50A | 8,0      | 53        | 21        |
|                     | 50A | 12,5     | 35        | 35        |

Peso Médio Total (1x) = 77 kg

GRUPO 05 (x2)



GRUPO 06 (x2)



ELEVAÇÃO

| ELEMENTO | COMP. 1 | COMP. 2 | QTDE |
|----------|---------|---------|------|
| LA51     | 287     | 245     | 1    |
| LA96     | 281     | 239     | 1    |

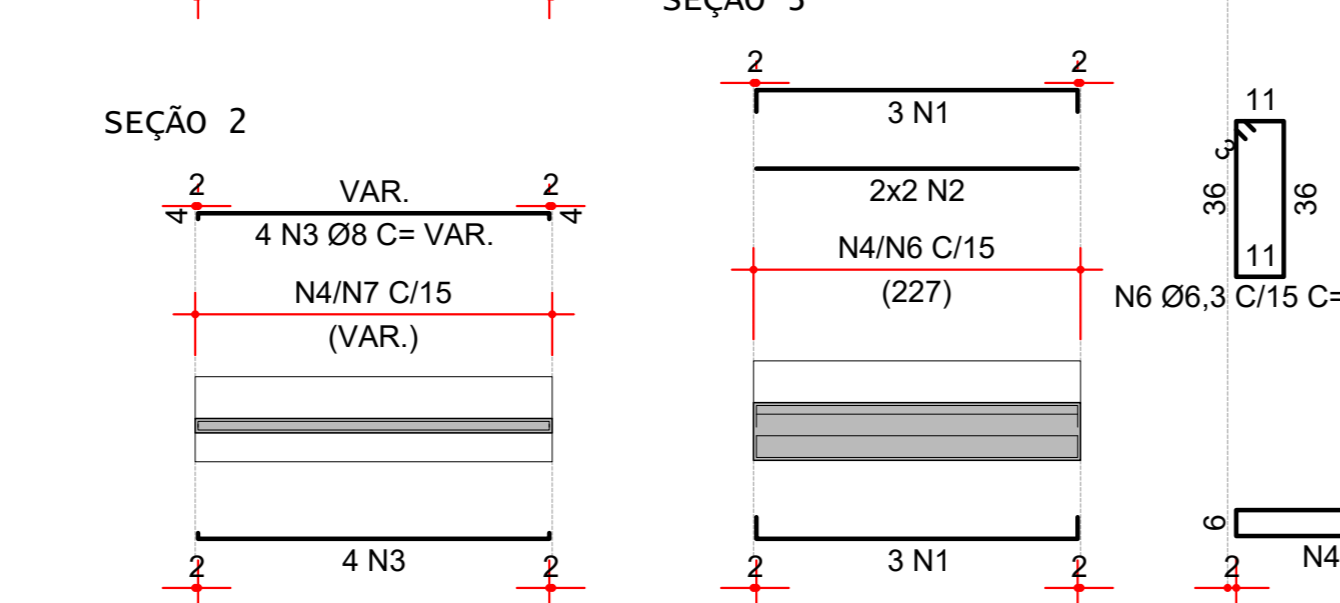
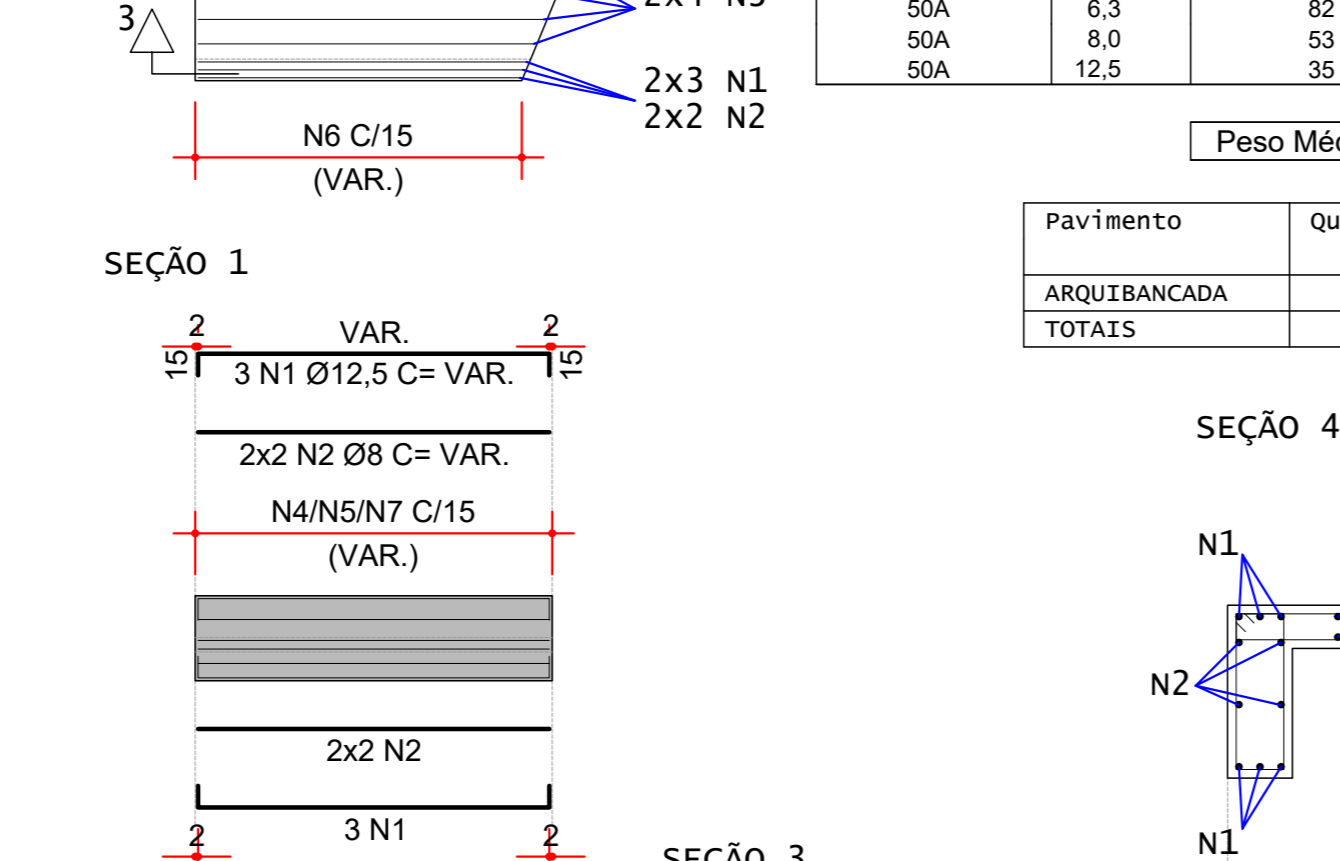
| GRUPO 06 | ÁÇO | POS | BIT (mm) | QUANT | COMPRIMENTO UNIT (cm) | TOTAL (cm) |
|----------|-----|-----|----------|-------|-----------------------|------------|
|          | 50A | 1   | 12,5     | 12    | VAR.                  | 3468       |
|          | 50A | 2   | 8,0      | 12    | VAR.                  | 3108       |
|          | 50A | 3   | 8,0      | 8     | VAR.                  | 2136       |
|          | 50A | 4   | 6,3      | 218   | 3488                  | 3488       |
|          | 50A | 5   | 6,3      | 142   | 2688                  | 2688       |
|          | 50A | 6   | 6,3      | 104   | 1664                  | 1664       |
|          | 50A | 7   | 6,3      | 3     | VAR.                  | 342        |

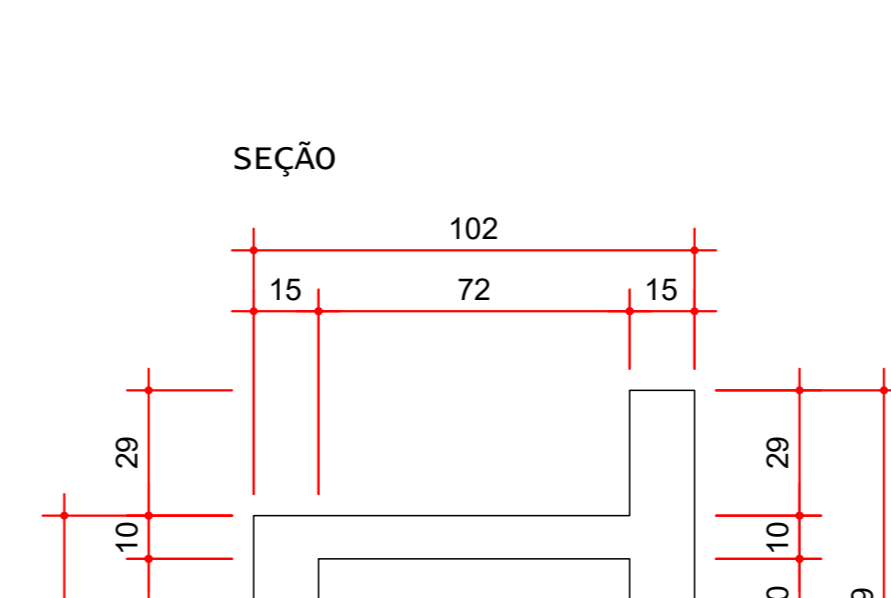
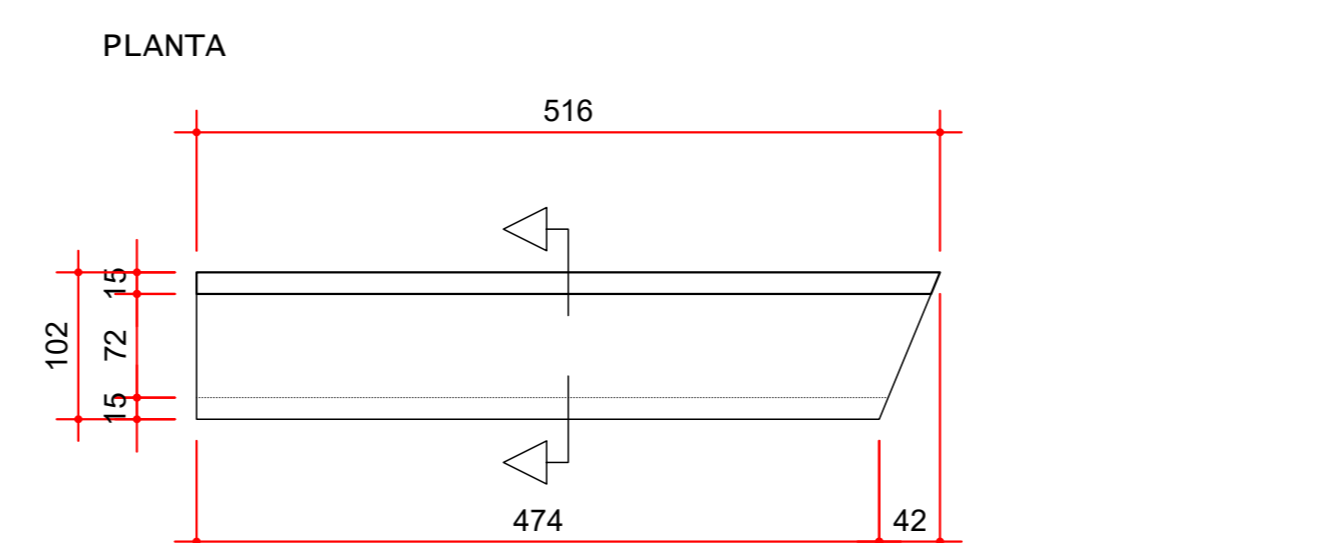
| RESUMO AÇO CA 50-60 | ÁÇO | BIT (mm) | COMP. (m) | PESO (kg) |
|---------------------|-----|----------|-----------|-----------|
|                     | 50A | 6,3      | 82        | 21        |
|                     | 50A | 8,0      | 53        | 21        |
|                     | 50A | 12,5     | 35        | 35        |

Peso Médio Total (1x) = 77 kg

GRUPO 06 (x2)



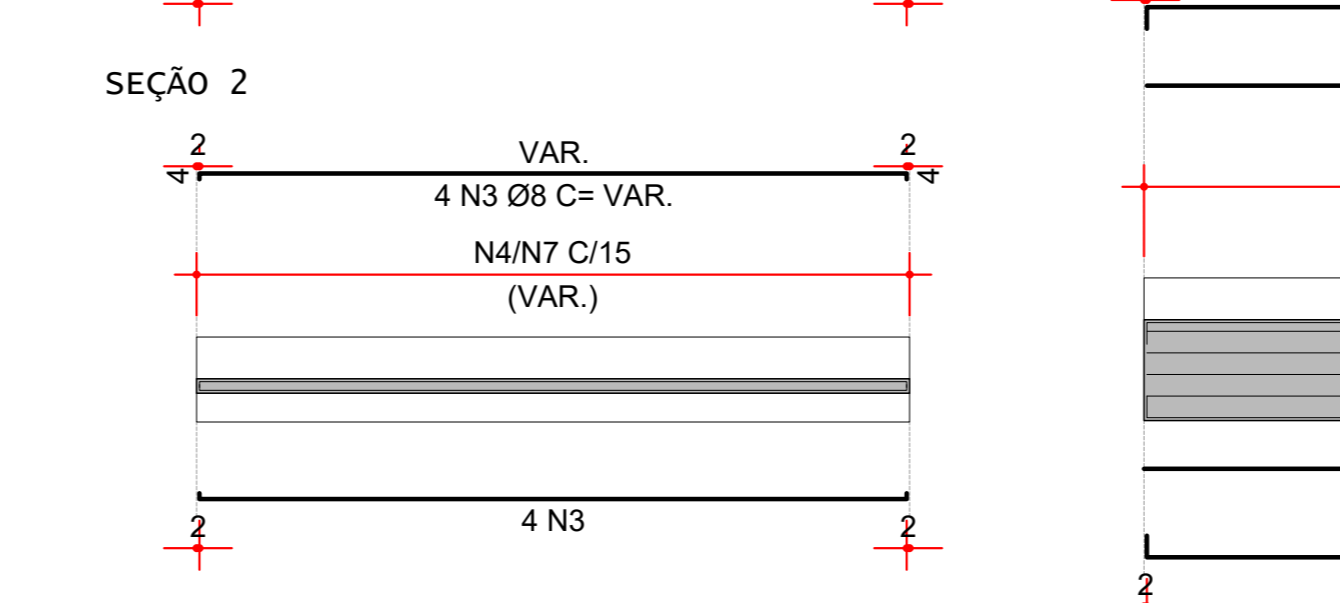
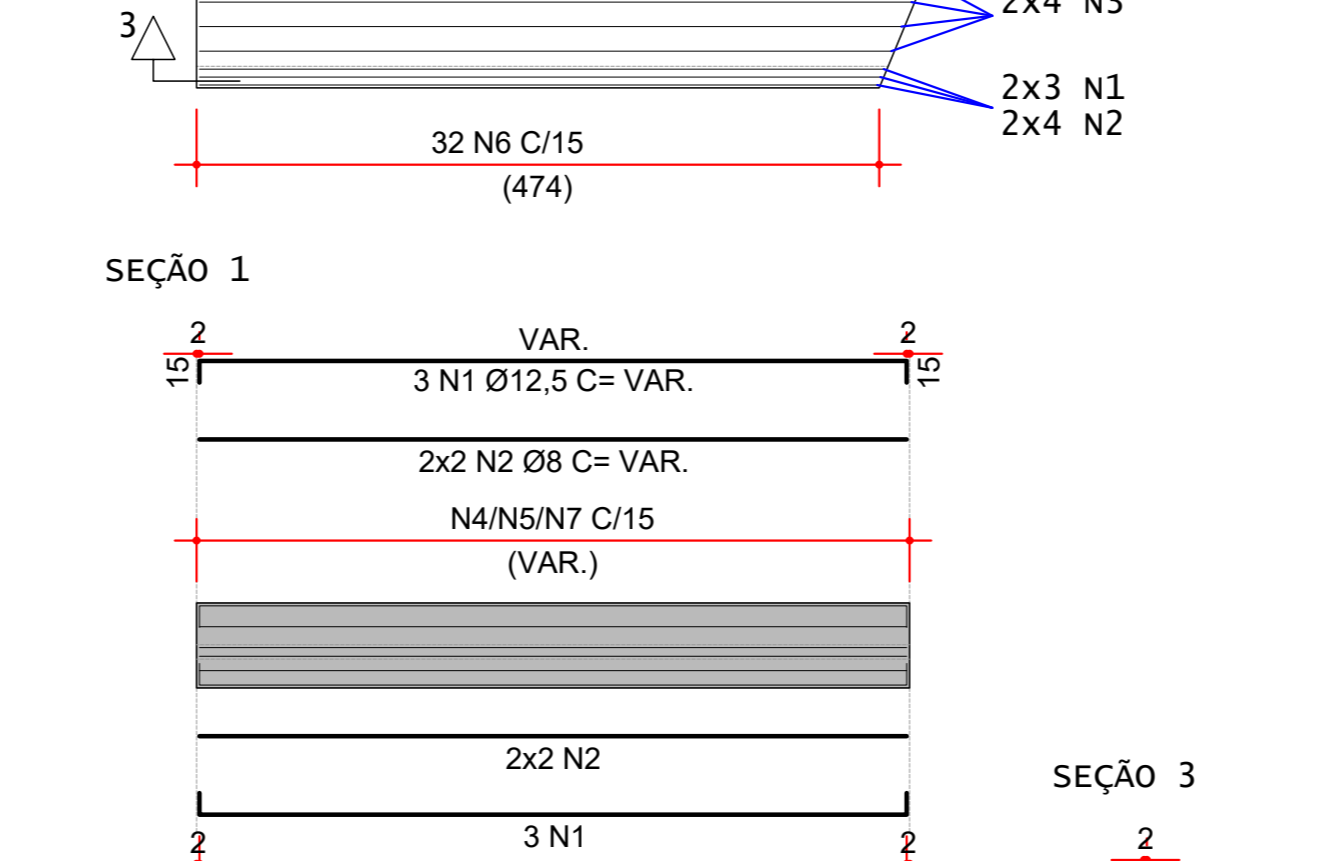
LA103 (x4)



ELEVAÇÃO

| ELEMENTO | COMP. 1 | COMP. 2 | QTDE |
|----------|---------|---------|------|
| LA103    | 516     | 42      | 1    |

LA103 (x4)



| LA103 | ÁÇO | POS | BIT (mm) | QUANT | COMPRIMENTO UNIT (cm) | TOTAL (cm) |
|-------|-----|-----|----------|-------|-----------------------|------------|
|       | 50A | 1   | 12,5     | 12    | VAR.                  | 6300       |
|       | 50A | 2   | 8,0      | 16    | VAR.                  | 7820       |
|       | 50A | 3   | 8,0      | 8     | VAR.                  | 4024       |
|       | 50A | 4   | 6,3      | 32    | 216                   | 6976       |
|       | 50A | 5   | 6,3      | 35    | 142                   | 4970       |
|       | 50A | 6   | 6,3      | 32    | 164                   | 5248       |
|       | 50A | 7   | 6,3      | 3     | VAR.                  | 342        |

| RESUMO AÇO CA 50-60 | ÁÇO | BIT (mm) | COMP. (m) | PESO (kg) |
|---------------------|-----|----------|-----------|-----------|
|                     | 50A | 6,3      | 176       | 43        |
|                     | 50A | 8,0      | 120       | 48        |
|                     | 50A | 12,5     | 63        | 63        |

Peso Total (1x) = 154 kg

| Pavimento    | Quant | Volume m3 | Área de forma m2 |
|--------------|-------|-----------|------------------|
| ARQUIBANCADA | 1     | 1,37      | 18,08            |
| TOTAIS       | 4     | 5,48      | 72,32            |

NOTAS DE PROJETO:

- DIMENSÕES EM CM. EXCETO ONDE INDICADO.
- O CONCRETO UTILIZADO DEVERÁ SER DA CLASSE C30 CONFORME DISCRIMINADA NA NBR 6118 (ABNT, 2014).
- A MOVIMENTAÇÃO DAS LAJES DE ARQUIBANCADA SOMENTE PODE SER REALIZADA QUANDO O CONCRETO ATINGIR RESISTÊNCIA À COMPRESSÃO (R<sub>C</sub>) DE 21 MPa.
- A ESTABILIDADE DAS ARQUIBANCADAS E DA ESTRUTURA, DURANTE O PROCESSO CONSTRUTIVO, DEVERÁ SER AVALIADA PELO CONSTRUTOR.

| REVISÃO | DESCRIÇÃO                        | DESENHO | APROV. | DATA       |
|---------|----------------------------------|---------|--------|------------|
| 2       | TABELA DE VOLUME E ÁREA DE FORMA | PJC     | PJC    | 25/03/2022 |
| 1       | REVISÃO GERAL                    | PJC     | PJC    | 19/09/2019 |
| 0       | INICIAL                          | PJC     | PJC    | 16/08/2019 |

Projeto estrutural

**PROJECALC**  
ENGENHARIA

ENR CIVIL - WELINGTON RENANN TAVARES  
CREA PR 520260  
contato: wltavares@projecalc.com.br

ENR CIVIL - MATHEUS GALDINO DA SILVA  
CREA PR 136230  
contato: mthav@projecalc.com.br

CURITIBA - PR (41) 3013-4767

Obra

GINÁSIO DE ESPORTES PATO BRANCO  
PROJETO EXECUTIVO  
LAJES DA ARQUIBANCADA - FOLHA 03/04

Proprietário  
PREFEITURA MUNICIPAL DE PATO BRANCO

Endereço  
RUA BENJAMIN BORGES, BAIRRO FRARON, PATO BRANCO - PR

Escala  
INDICADA

Data  
09/2019

NÚMERO  
D-032-CA-003