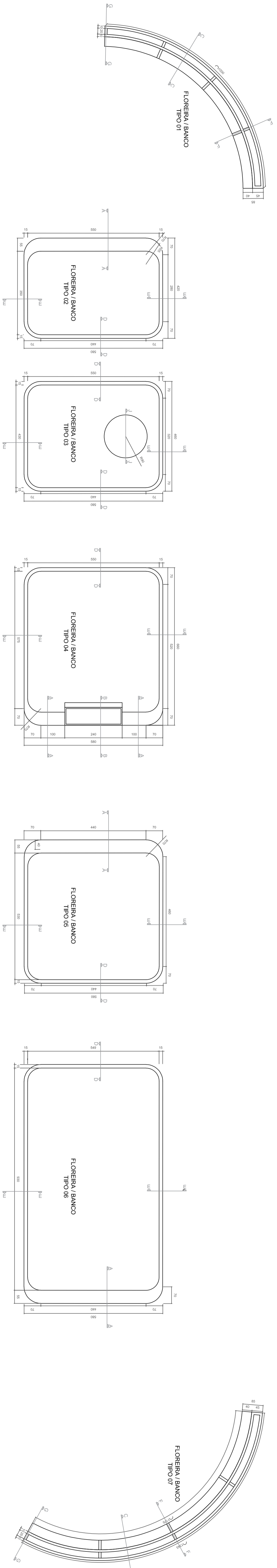


Consumo de Concreto

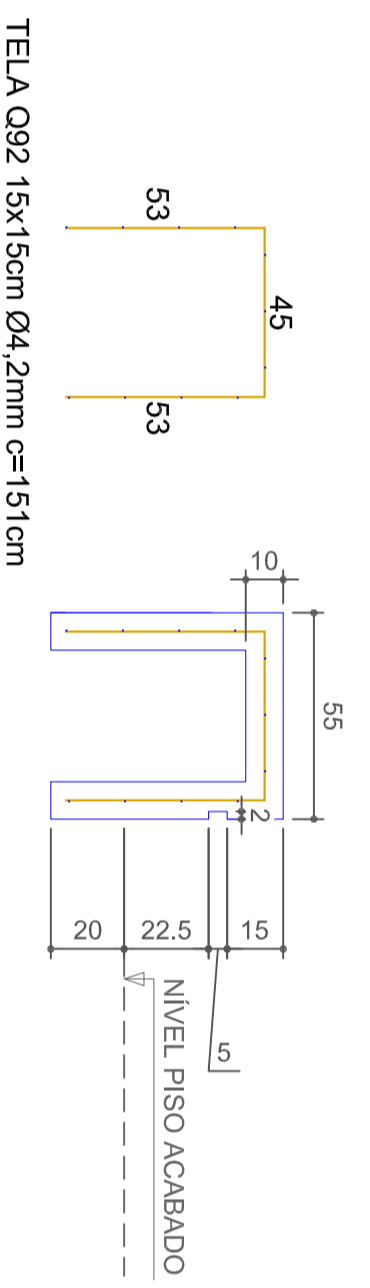
TIPO DO ELEMENTO	VOLUME CONCRETO ARMADO C-25 COM TELA Q92 (m³)
TIPO 1	2,72
TIPO 2	1,81
TIPO 3	1,12
TIPO 4	2,40
TIPO 5	2,06
TIPO 6	2,61
TIPO 7	3,47
TIPO 8	5,18
TOTAL	21,37

- Na mureta tipo 8 seram utilizadas 18 estacas tipo boca de Ø20cm com comprimento de 80cm
 - Total de estacas: 14,4m

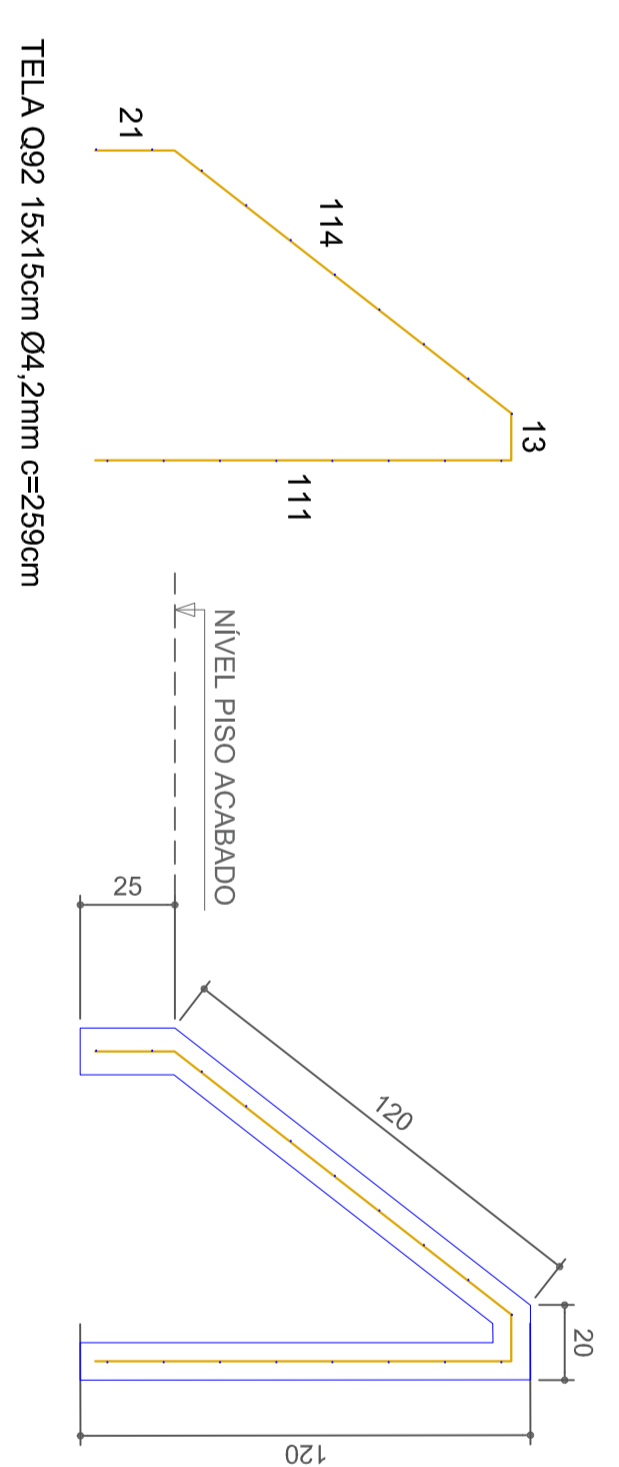


PLANTA BAIXA FLOREIRAS/BANCO TIPO 01 A 07 ESC 1:75

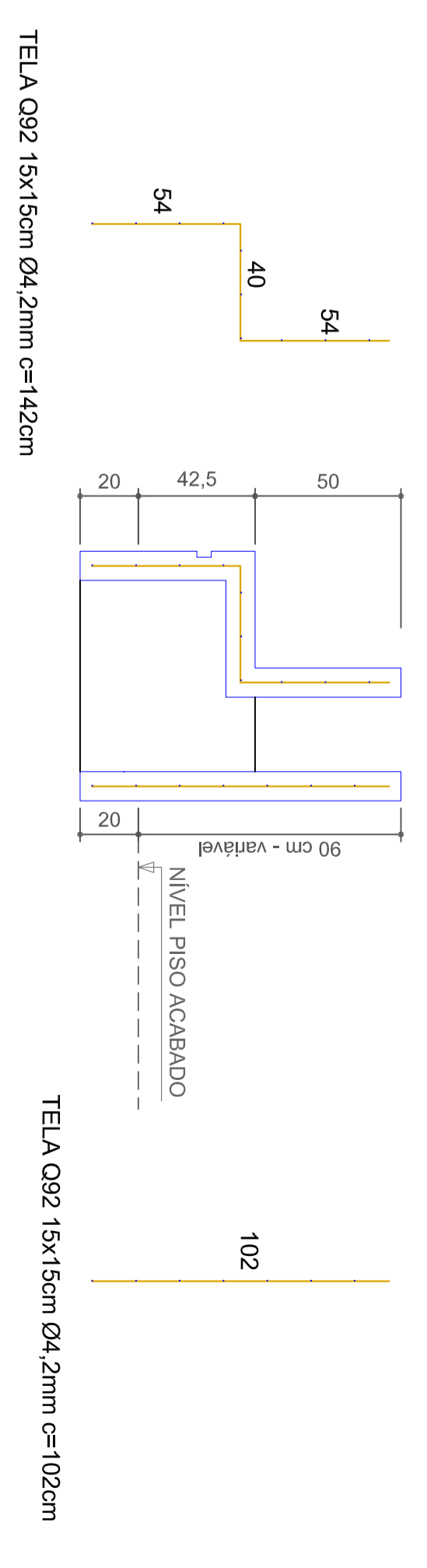
CORTE A - A
 ESC 1:50



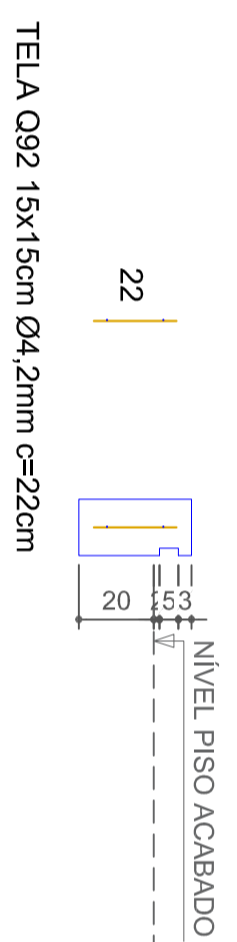
CORTE B - B
 ESC 1:20



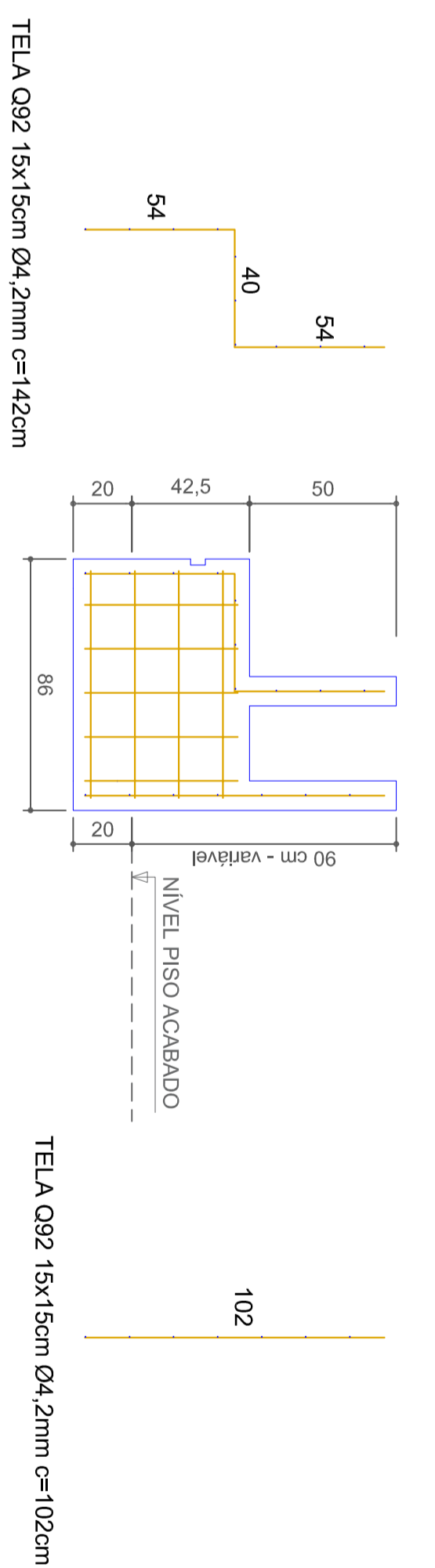
CORTE C - C
 ESC 1:50



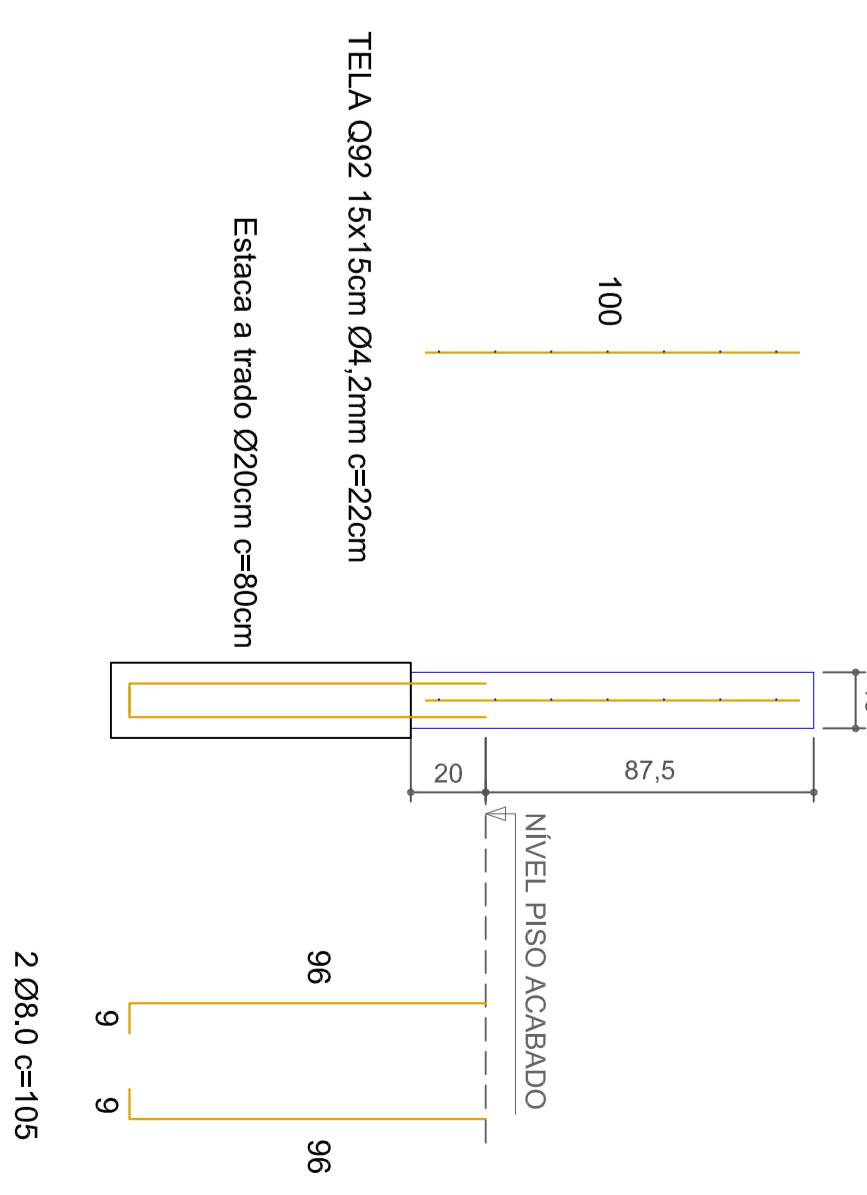
CORTE D - D
 ESC 1:20



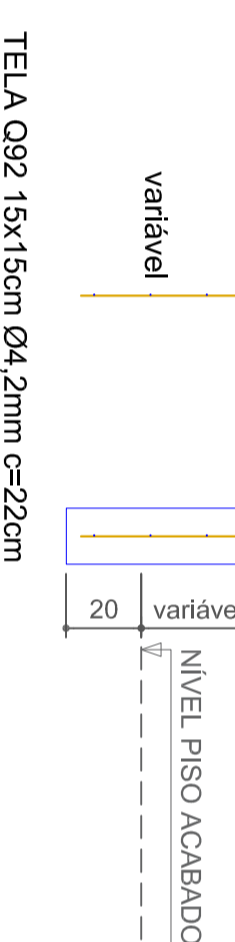
CORTE E - E
 ESC 1:20



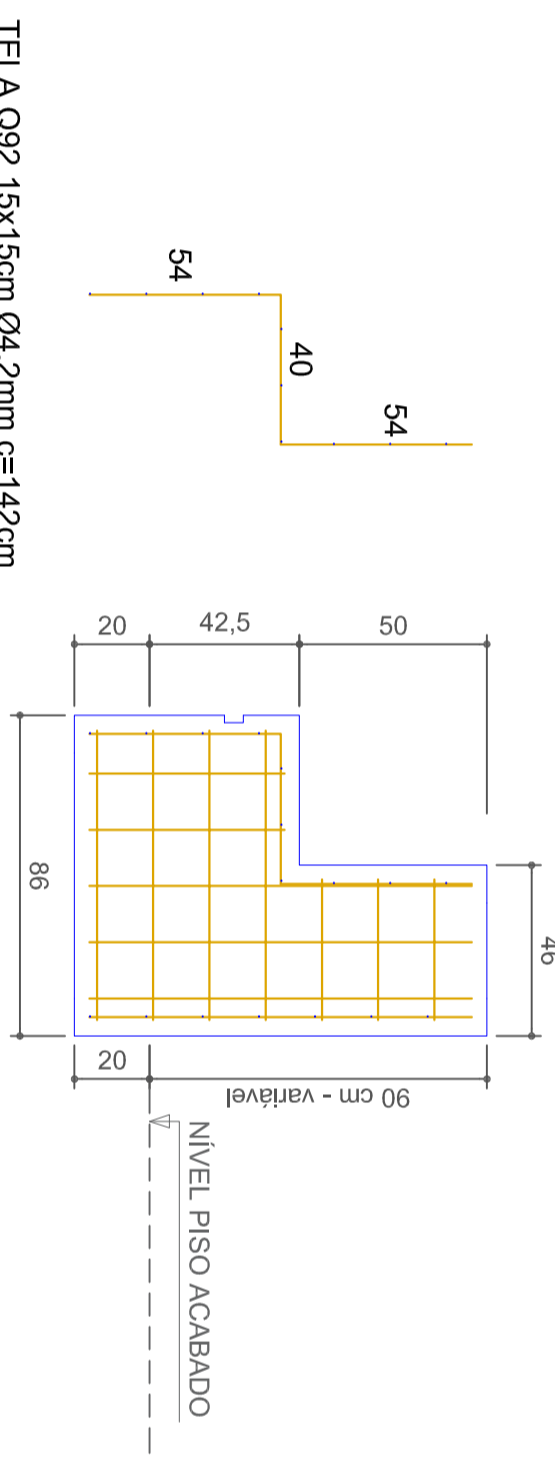
CORTE H - H
 ESC 1:20



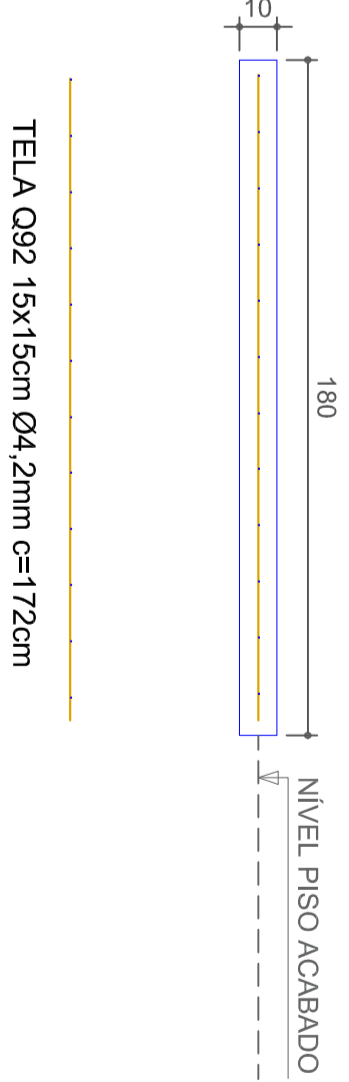
CORTE E - E
 ESC 1:20



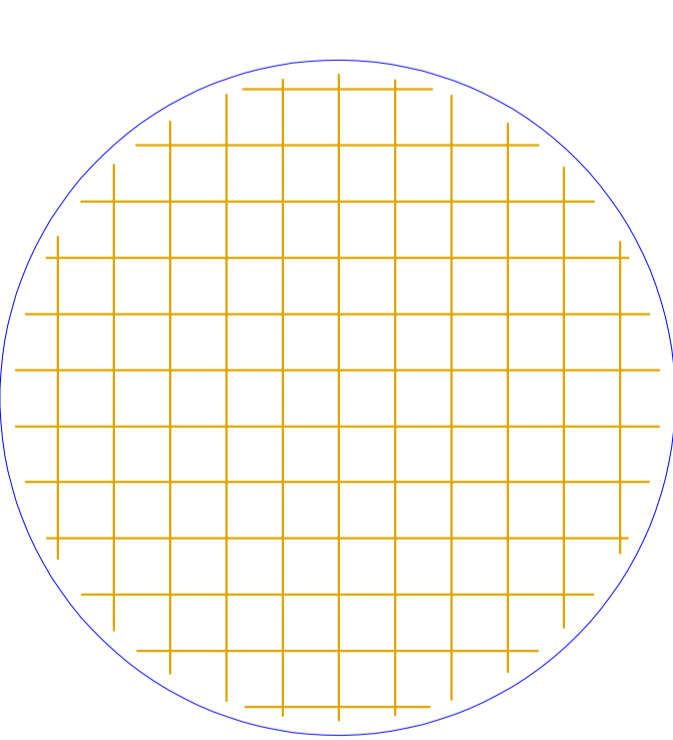
CORTE G - G
 ESC 1:20



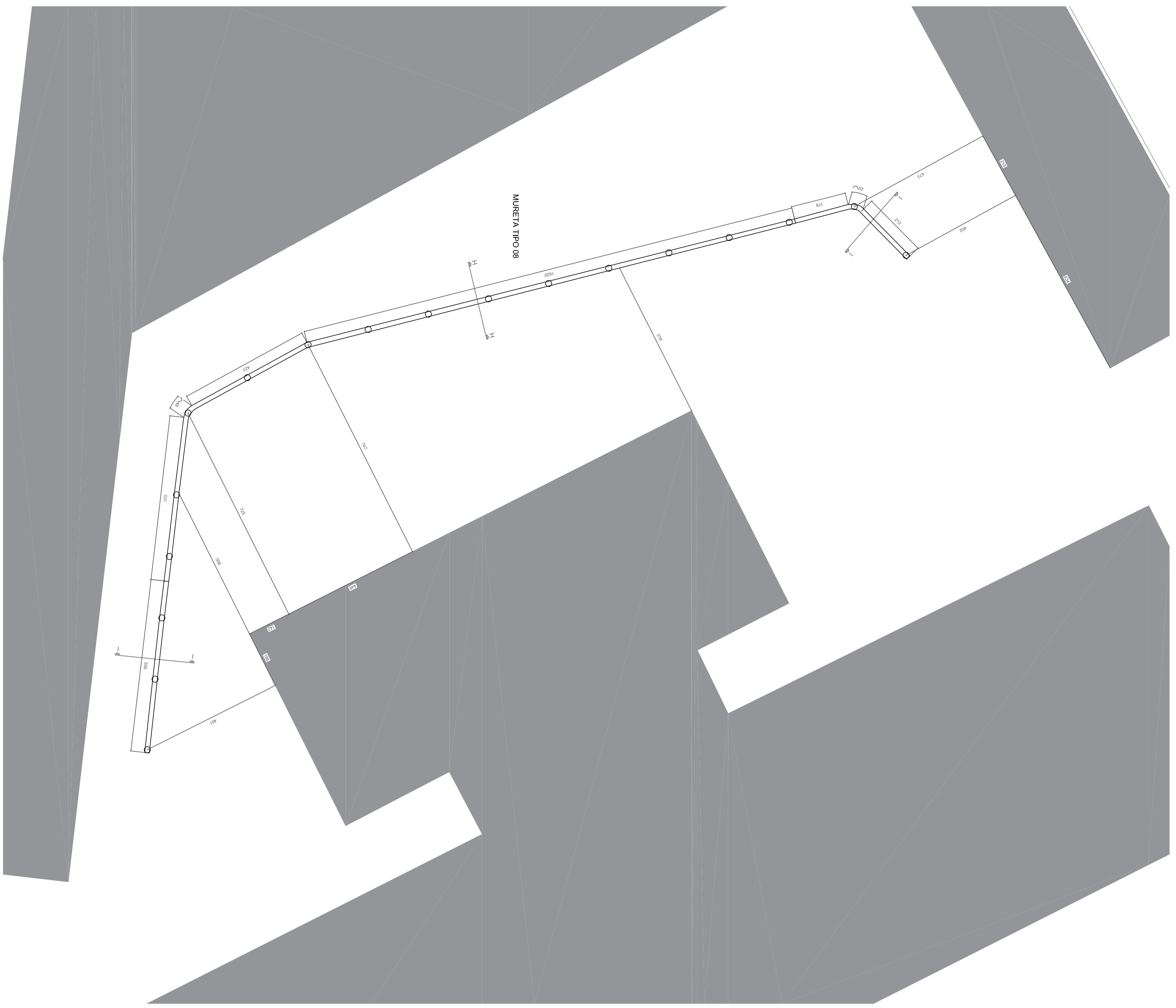
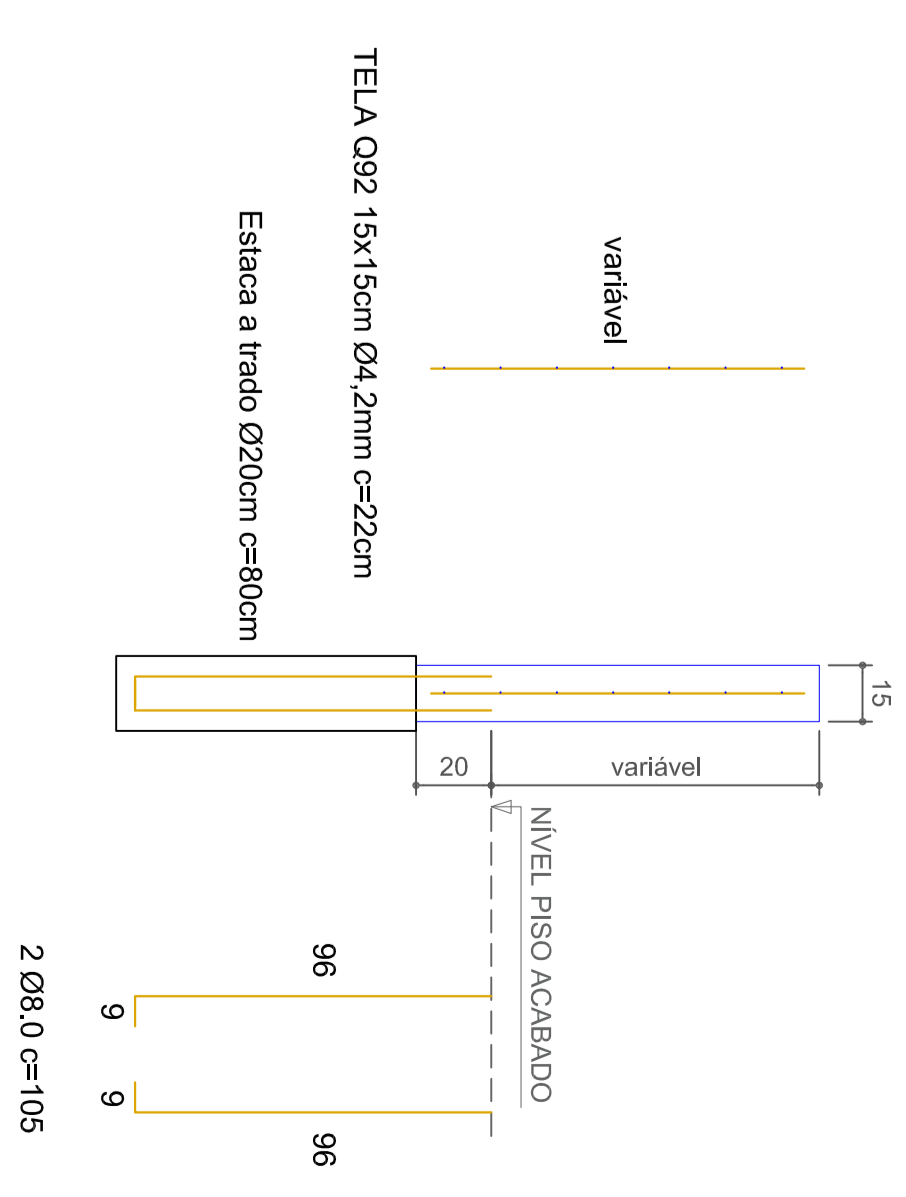
CORTE J - J
 ESC 1:20



VISTA SUPERIOR J - J
 ESC 1:20



CORTE I - I
 ESC 1:20



PLANTA BAIXA MURO TIPO 8 ESC 1:75