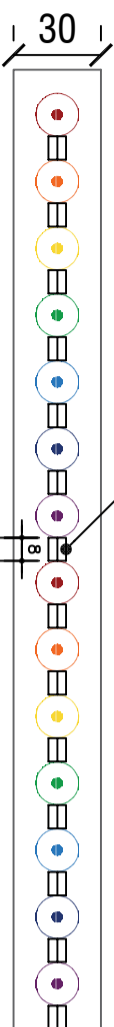
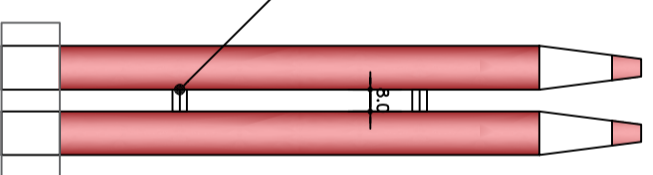


PALITO DEVE PERMANECER ESCORADO ATÉ A CURA TOTAL DO CONCRETO DA VB

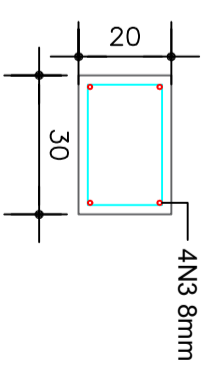


PALITO DEVE PERMANECER ESCORADO ATÉ A CURA TOTAL DO CONCRETO DA VB



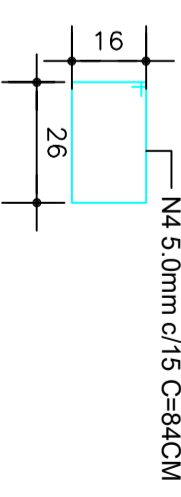
VIGA BALDRAME

ARMADURA LONGITUDINAL



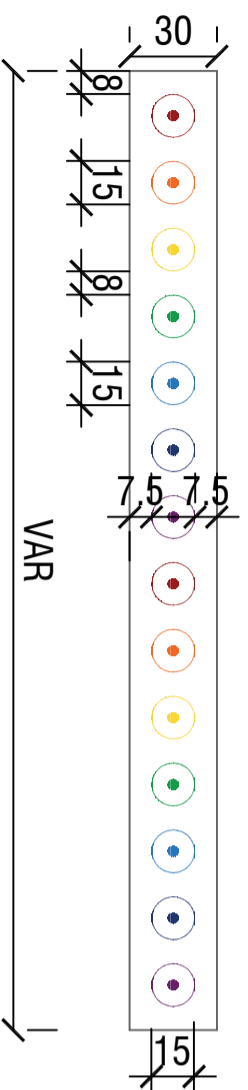
ESTRIBOS

N4 5.0mm c/15 C=84CM

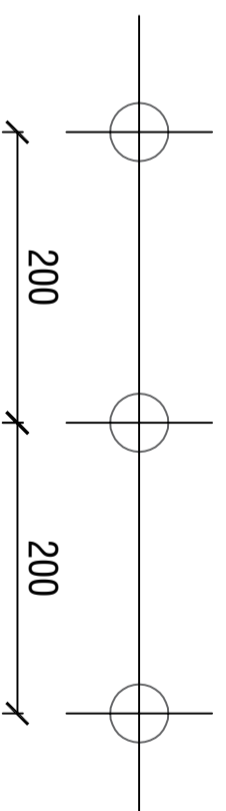


DETALHES DO ESCORAMENTO

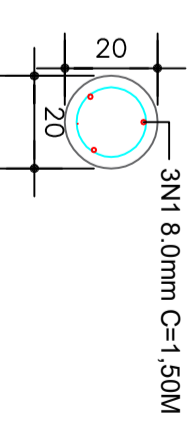
DETALHES DO ESCORAMENTO



LOCAÇÃO DAS ESTACAS



ESTACA Ø20CM H=1,50M



PROPRIETÁRIO:	PREFEITURA MUNICIPAL DE PATO BRANCO	LOCAL:	PATO BRANCO
OBRA:	MURO PALITO EM FORMA DE LÁPIS	DATA:	JUNHO/2021
ESPECIFICAÇÕES:	DETALHES	DESENHO:	MATHEUS
	PROPRIETÁRIO	PRANCHA:	02/02
	MATHEUS GONÇALVES FARIAS ENGENHEIRO CIVIL CREA PR 177098/D		