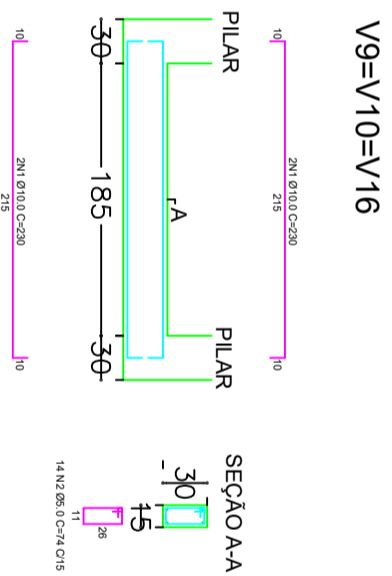
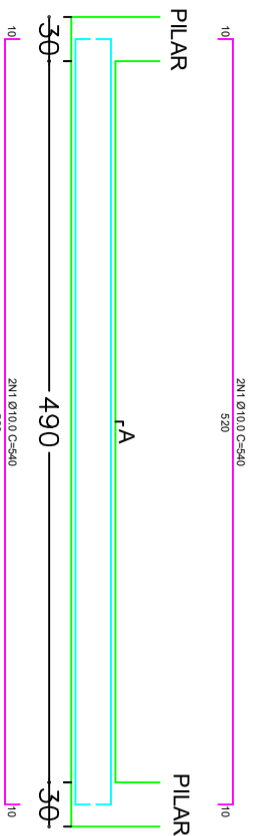
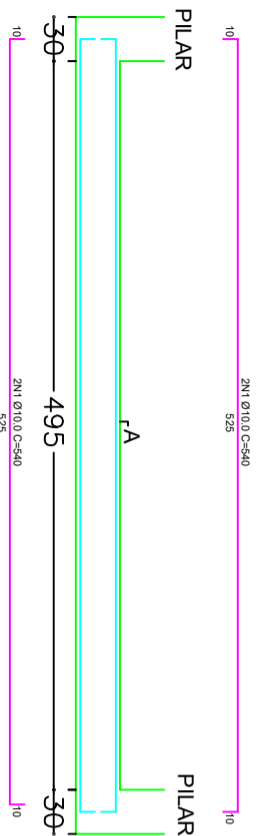


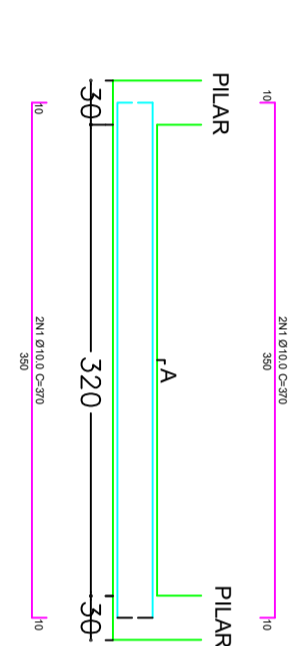
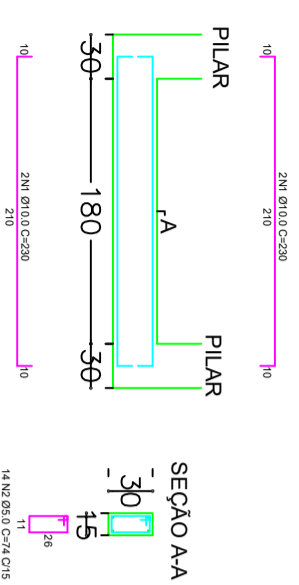
V01=V04=V13=V14=V19=V20



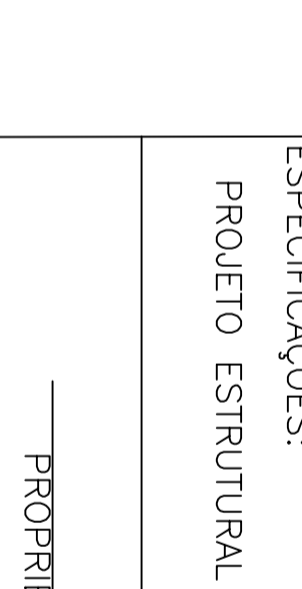
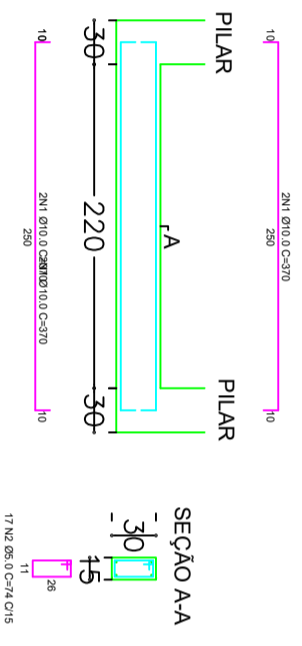
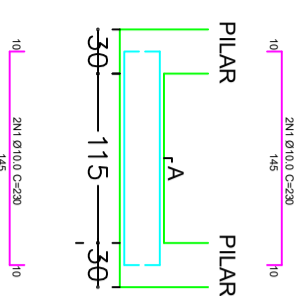
V7=V12



V5=V6=V15=V18



V9=V10=V16



Vigas Baldrame			
Nome	Seção (cm)	Elevação (cm)	Nível (cm)
V1	15x30	0	-30
V2	15x30	0	-30
V3	15x30	0	-30
V4	15x30	0	-30
V5	15x30	0	-30
V6	15x30	0	-30
V7	15x30	0	-30
V8	15x30	0	-30
V9	15x30	0	-30
V10	15x30	0	-30
V11	15x30	0	-30
V12	15x30	0	-30
V13	15x30	0	-30
V14	15x30	0	-30
V15	15x30	0	-30
V16	15x30	0	-30
V17	15x30	0	-30
V18	15x30	0	-30
V19	15x30	0	-30
V20	15x50	0	-30

PROPRIETÁRIO:

PREFEITURA MUNICIPAL DE PATO BRANCO

LOCAL:

PATO BRANCO

OBRA:

AMPLIAÇÃO SALAS DE AULA – OLAVO BILAC

DATA:

MAIO / 2021

ESPECIFICAÇÕES:

PROJETO ESTRUTURAL – FERRAGEM BALDRAME

DESENHO:

MATHEUS

PRANCHA:

PROPRIETÁRIO

MATHEUS GONÇALVES FARIAS

ENGENHEIRO CIVIL CREA PR 177098/D

03/06