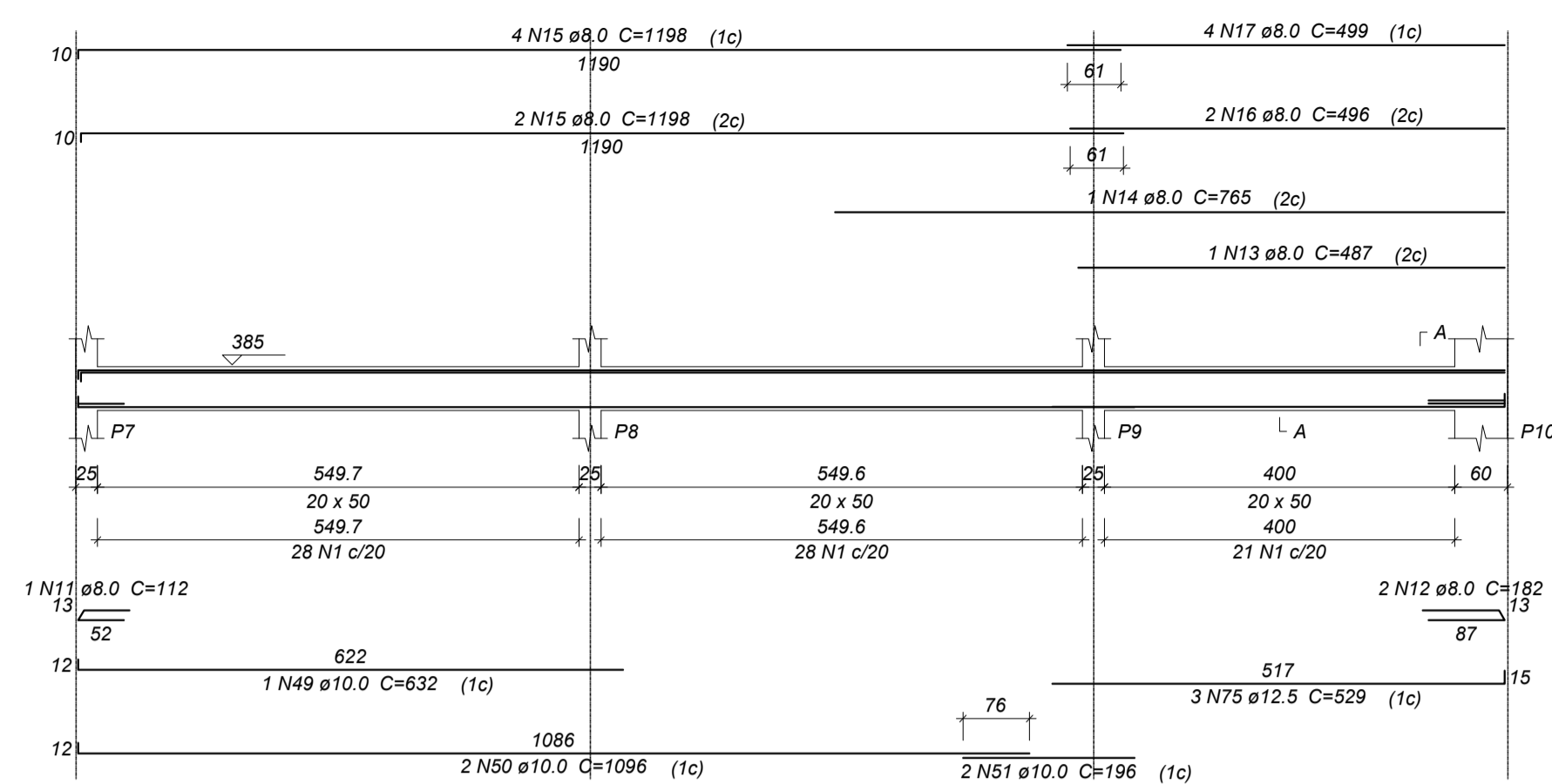
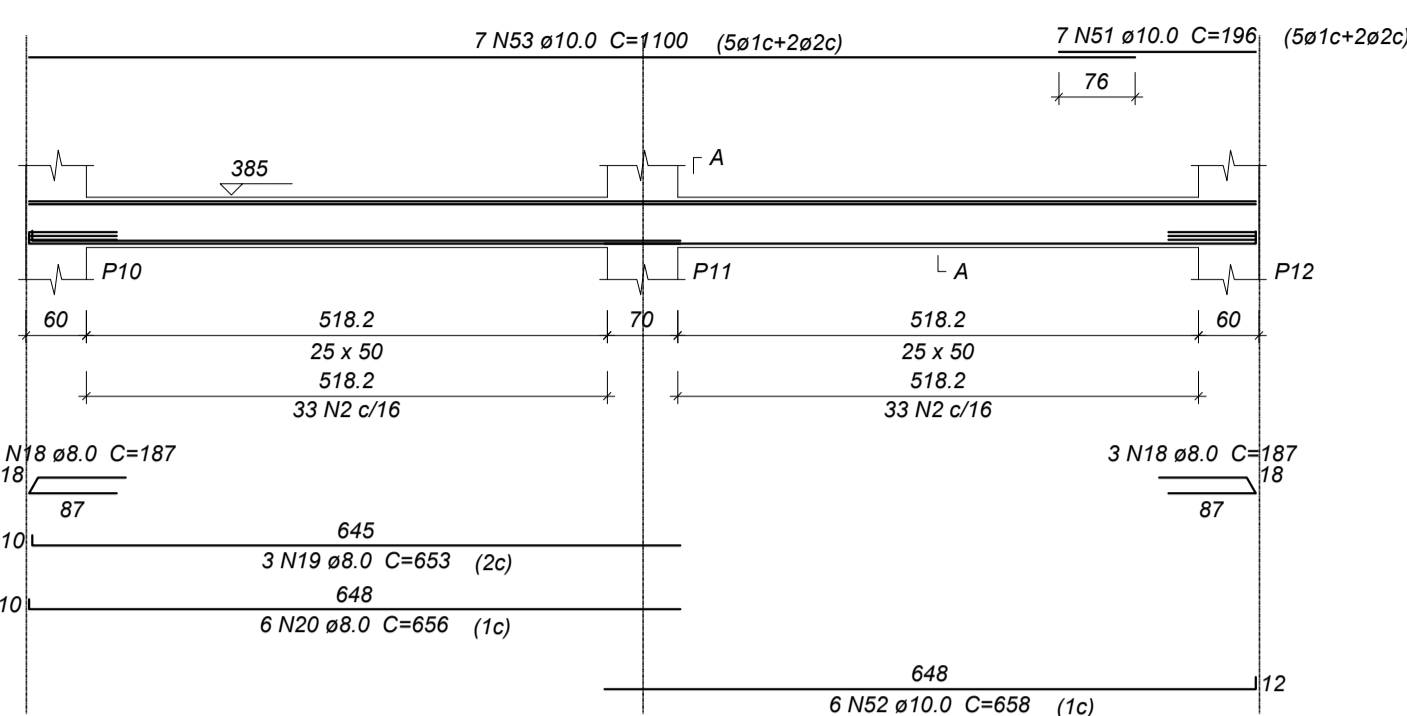


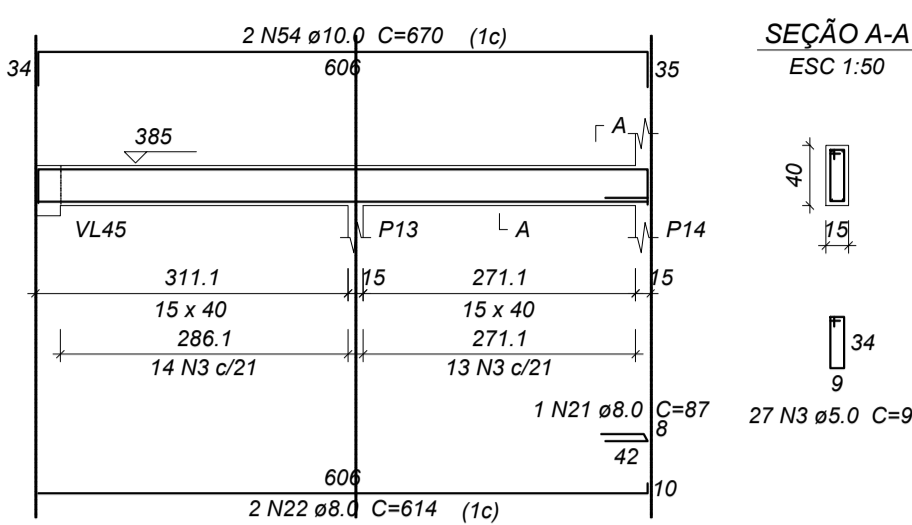
VL2 ESC 1:75



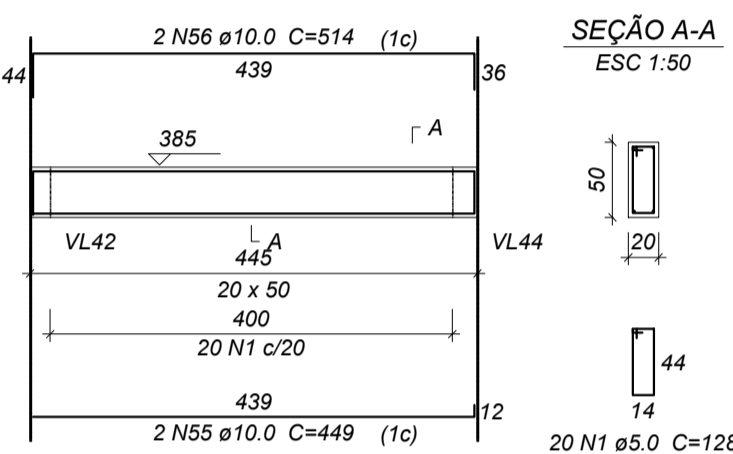
VL3 ESC 1:75



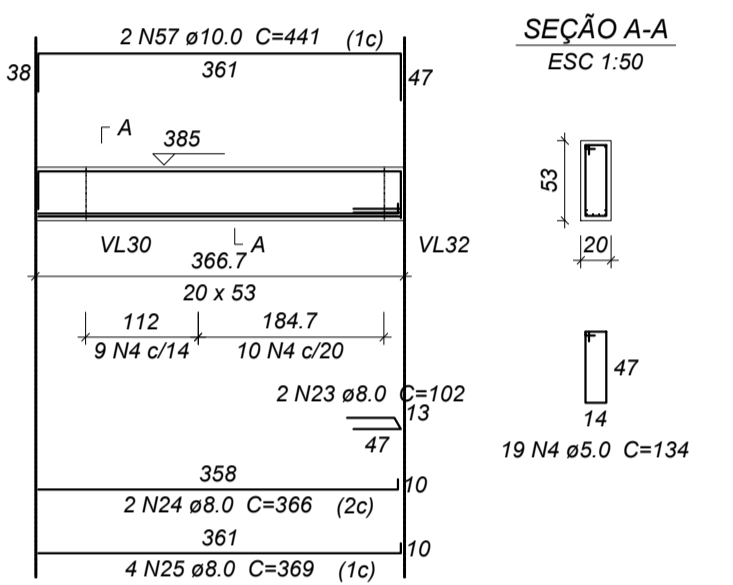
VL4 ESC 1:75



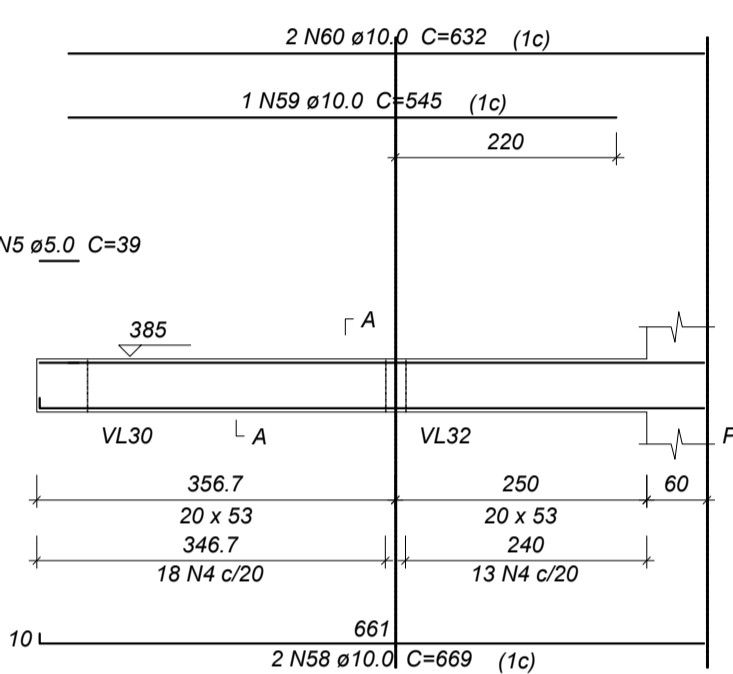
VL5 ESC 1:75



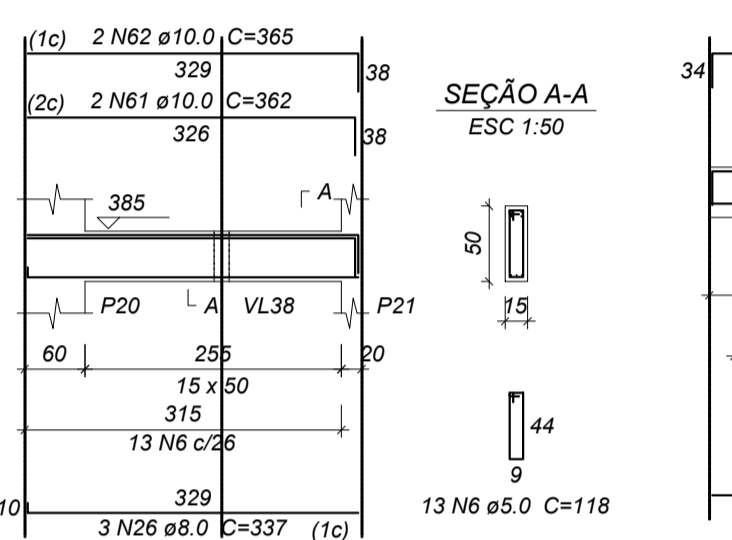
VL6 ESC 1:75



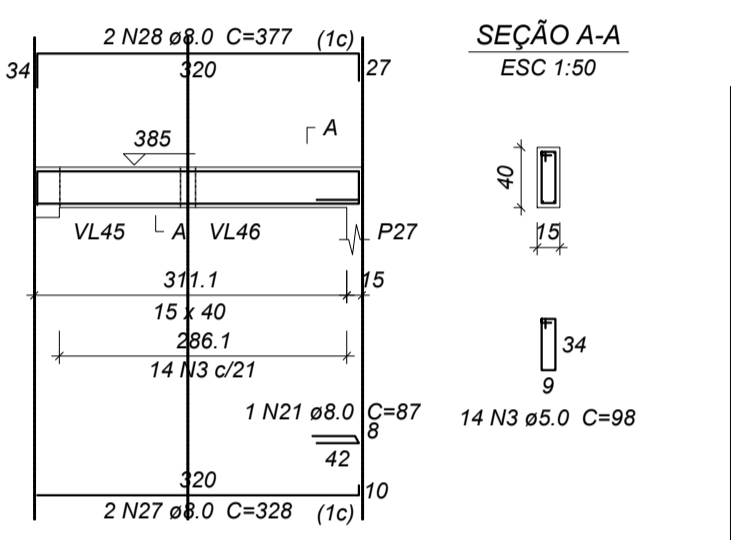
VL7 ESC 1:75



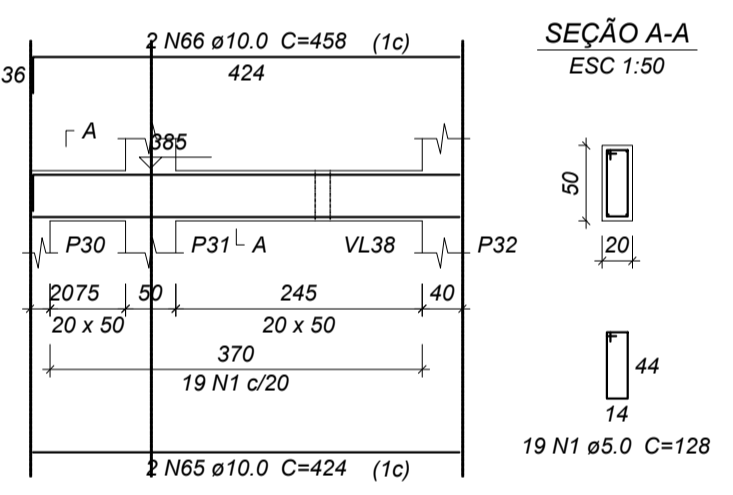
VL8 ESC 1:75



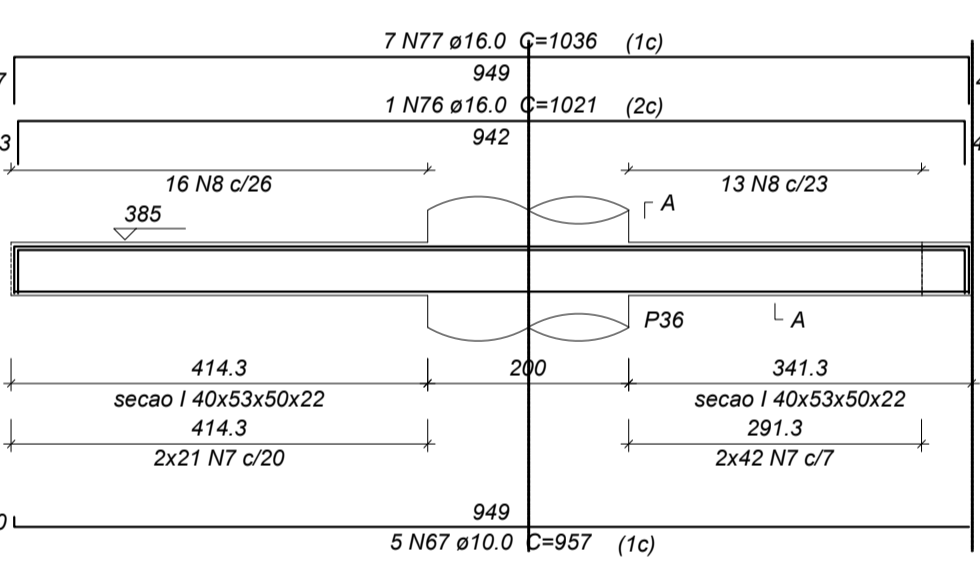
VL9 ESC 1:75



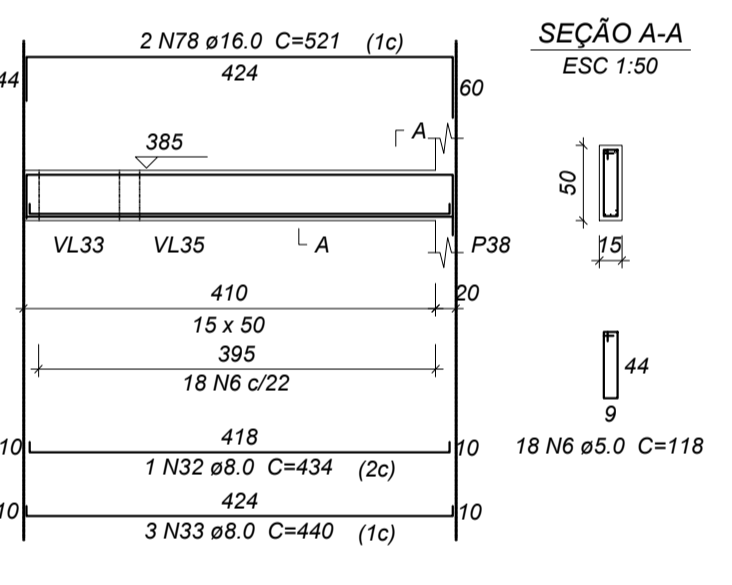
VL11 ESC 1:75



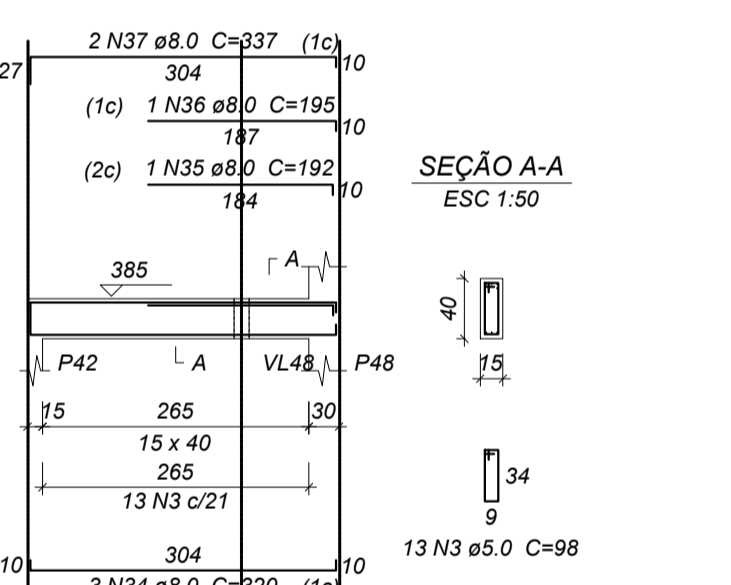
VL12 ESC 1:75



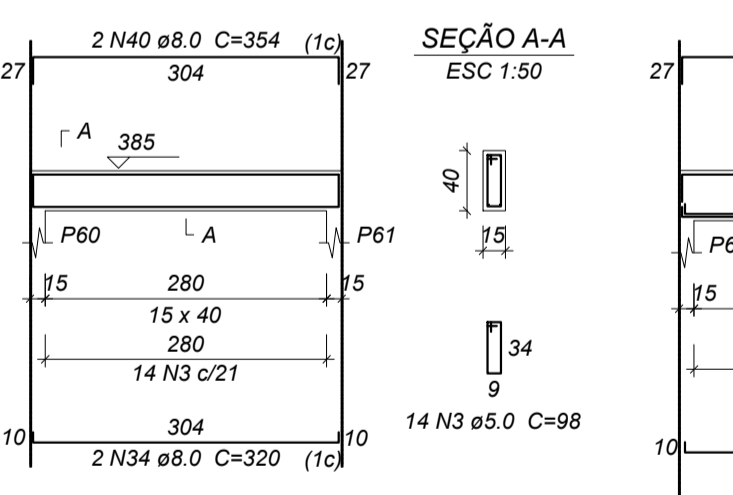
VL13 ESC 1:75



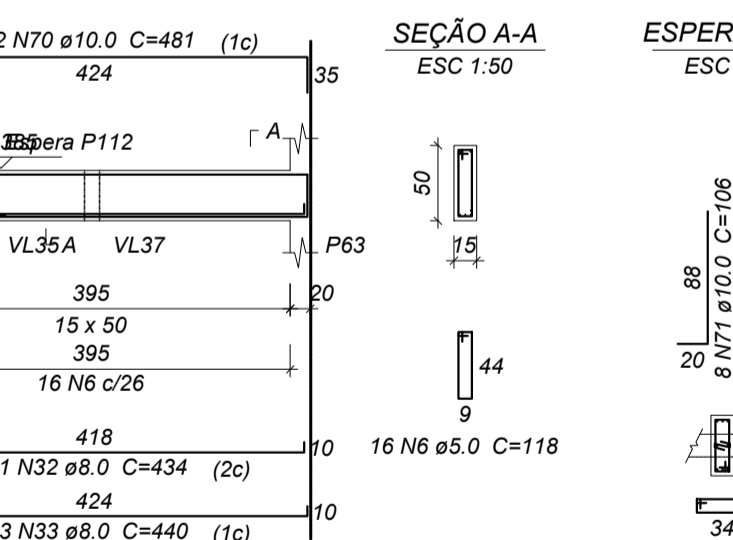
VL14 ESC 1:75



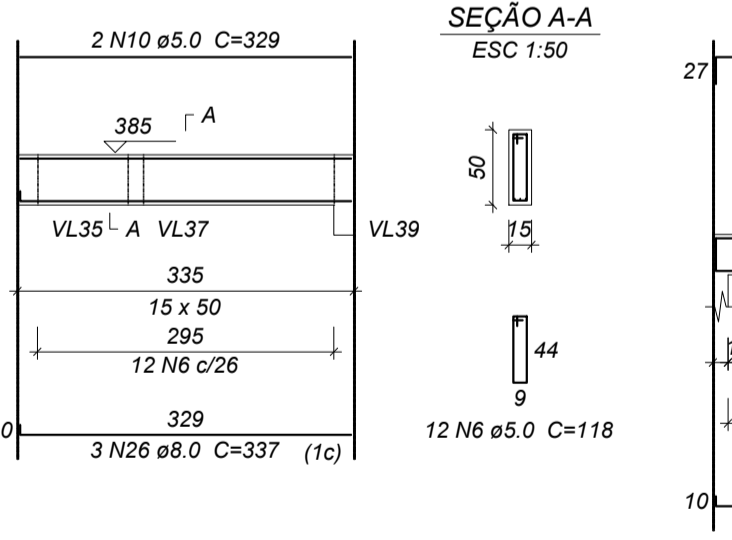
VL16 ESC 1:75



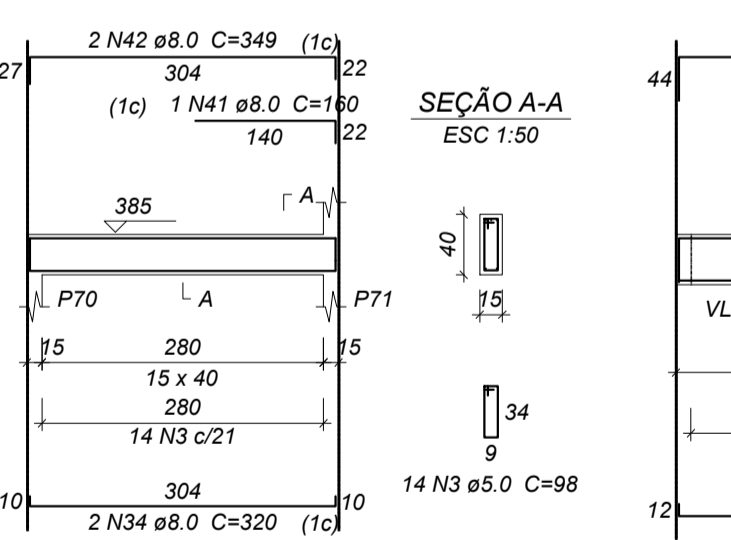
VL17 ESC 1:75



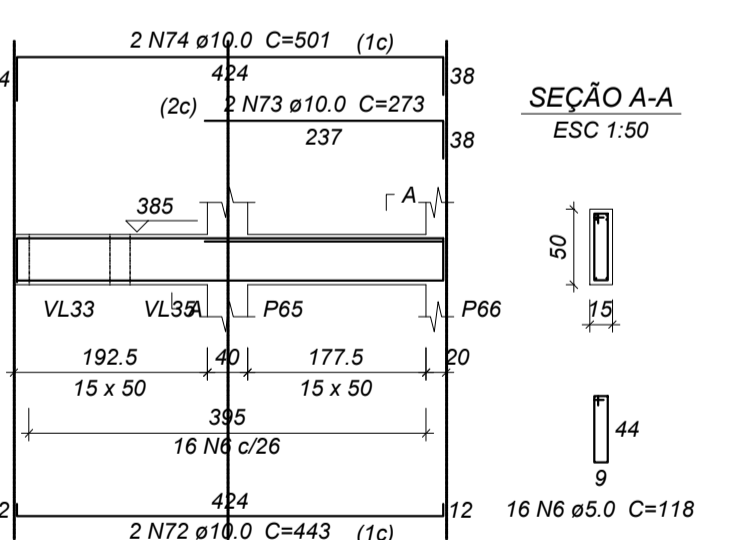
VL18 ESC 1:75



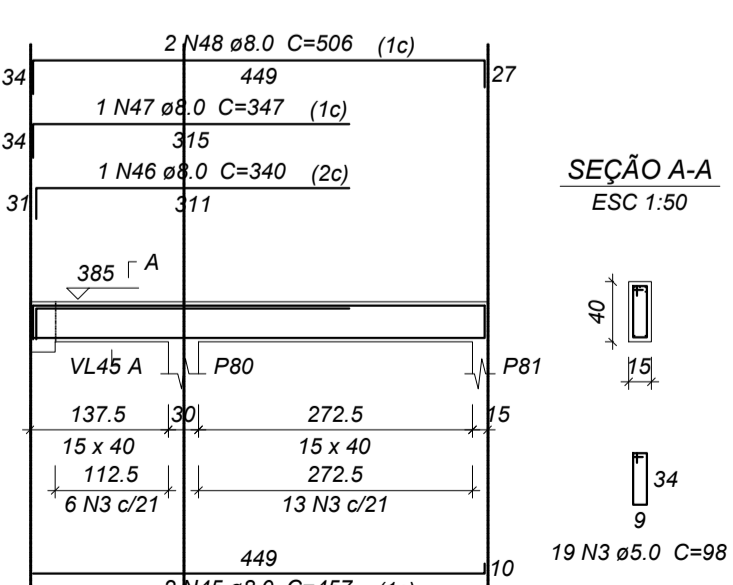
VL19 ESC 1:75



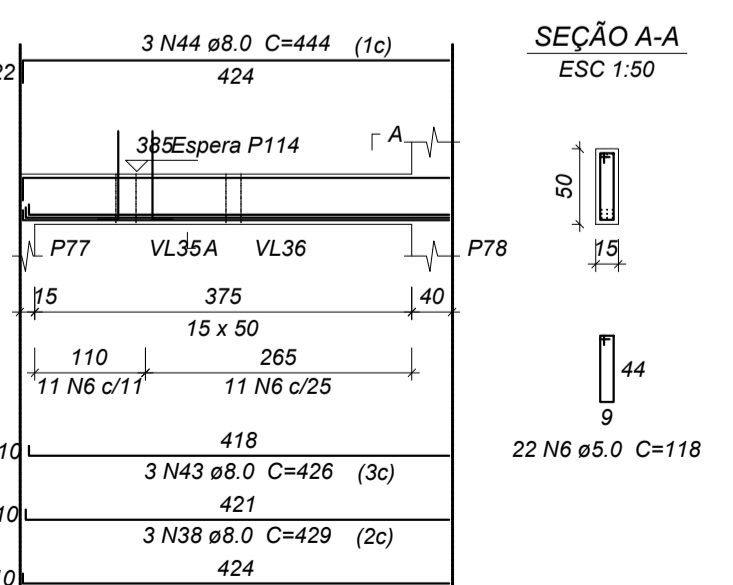
VL20 ESC 1:75



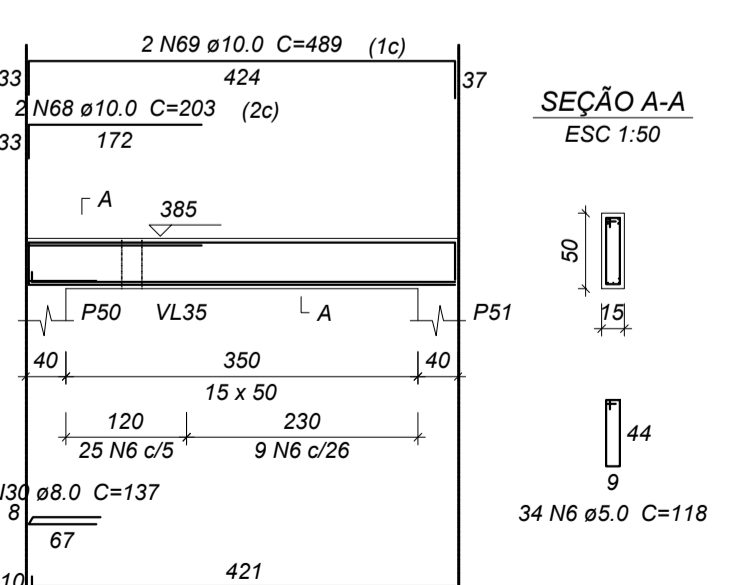
VL22 ESC 1:75



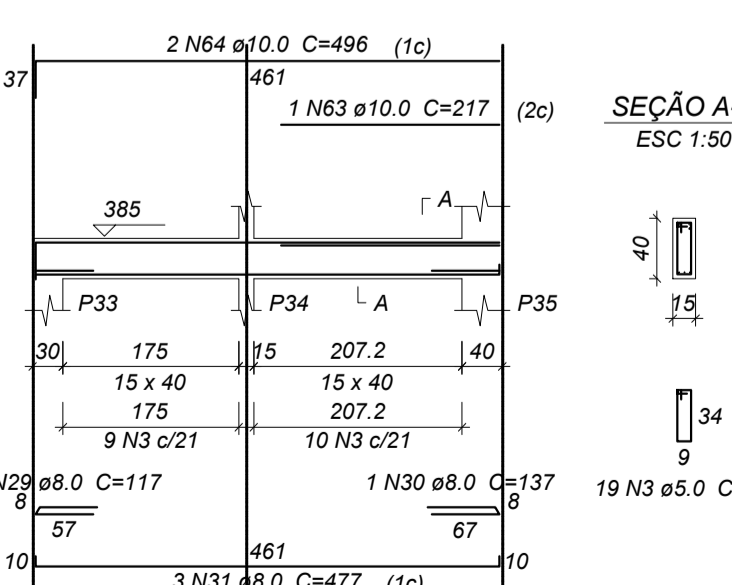
VL21 ESC 1:75



VL15 ESC 1:75



VL10 ESC 1:75



Relação do aço

Table showing reinforcement relationship for beams VL2 to VL22, including columns for beam type, diameter, quantity, unit, and total weight.

NOTAS GERAIS

- List of general notes regarding construction standards, concrete quality, reinforcement placement, and curing requirements.

Table for 'RAIO DE CURVATURA DAS BARRAS' (Bar Curvature Radius) with columns for diameter (ø), radius (R), and concrete strength (fck).

ATUALIZAÇÃO:

Revision table with columns for date, description, responsible person, and date.

Signature lines for project owner and author.

Specification table for 'OBRA: TEATRO MUNICIPAL NAURA RIGON' with fields for area, scale, date, and design.

Footer area containing project details, logos of 'Município de Pató Branco' and 'Secretaria de Planejamento Urbano', and a large page number '26/61'.